

METRIX



ADVANCED, POWERFUL, RELIABLE

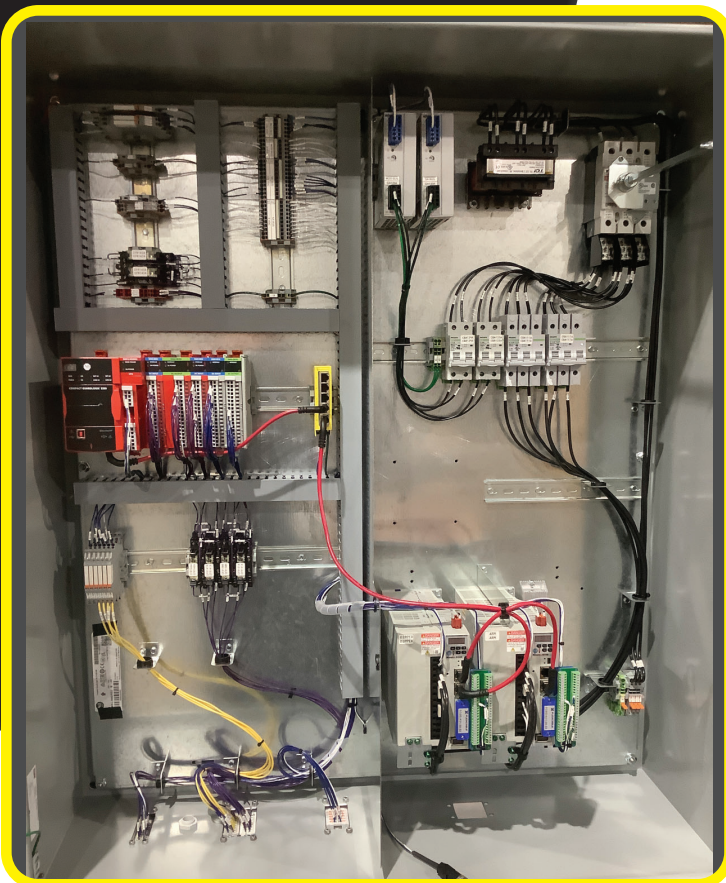
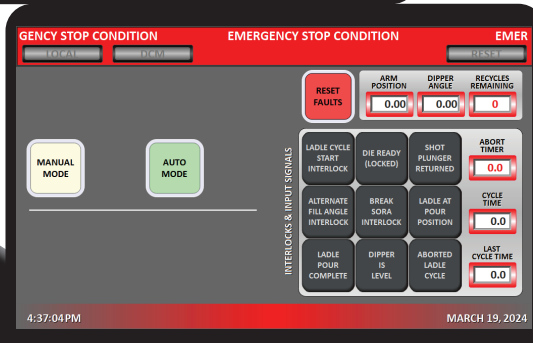
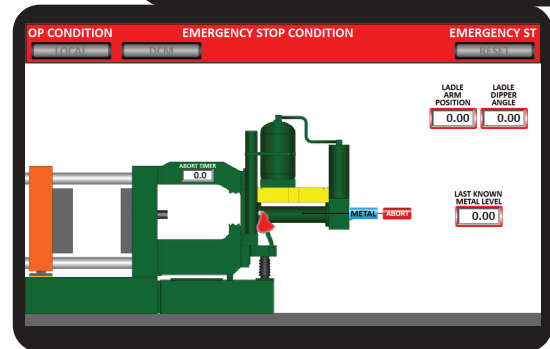
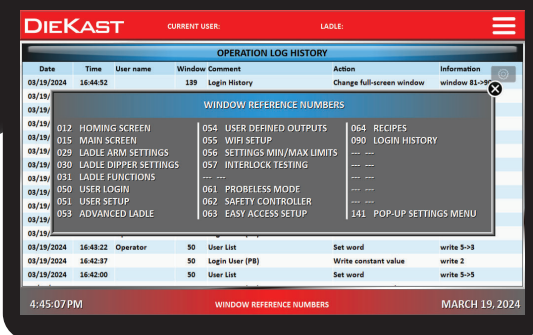
The Metrix series controllers are our most advanced, user-friendly ladle and sprayer controls. The Metrix series operator interface features a new larger, higher resolution touchscreen with a more consistent and intuitive navigation system. The Metrix series controllers are packed with more features and troubleshooting information, all while improving on the operator's and programmer's ease-of-use.

The Metrix series controllers utilize the performance and reliability of Allen Bradley's CompactLogix family of PLC processors, Kinetix servo drives and energy efficient MPL/MPM series servo motors.

Metrix Series of controllers are compatible with ladles and sprayers from Rimrock, Advance, UBE, and others. With single or combination cabinets available in any combination including dual manufacturers.

SYSTEM FEATURES

- Allen Bradley Compact GuardLogix 5380, SafetySIL2 Processor
- Allen Bradley Kinetix 5100 Servo Drives
- Full description for fault codes, with built in troubleshooting
- ANSI B152.1-2000 safety compliant
- Weintek 10" high resolution color touchscreen with wifi
- Set up multiple users with custom access levels
- Stores 100's of user defined setup programs
- Operation log stores last 1000 keystrokes
- Remote Access
- Ladle and sprayer can be fully operated from HMI screen
- Quick disconnect plugs for machine interlocks, PB station, ladle, sprayer, and spray package
- Controller supports both Ladle probe and probeless operation
- Ancillary process programming included
- Multiple fill angle options



OPTIONAL FEATURES

- Remote push button station
- Sprayer set up pendant
- RFID login
- Customer specific screens
- Managed ethernet switch
- Electrical panel air conditioner
- Controller stand
- HMI Screen Protector

SPECIFICATIONS

- 42"X36"X12" NEMA 4/12/IP66 Enclosure
- Input Voltage 480 Vac, 3Φ
- 24 VDC LOGIC
- Ambient Temperature 50°C(122°F)