

LADLES

- Ladle is completely disassembled, cleaned and inspected
- Sandblasted and repainted
- New bearings throughout body and arms
- New pour shaft with graphite loop self-lubricating bushings
- New upper and lower chains
- New counter balance spring, guide shaft, and bushing
- New encoder couplings
- New limit switches/prox switches
- New main harness
- New electrical wiring
- New electrical enclosure and terminal blocks
- New lower sensor probe assembly
- New gearboxes or speed reducers
- New rotary encoders with 5-30Vdc super line driver
- New motors (Servo or DC)
- New master cam setup
- New sprockets and spur gears



New sprockets and spur gears in stock for replacement parts



Don't waste valuable time rebuilding it,
EXCHANGE IT!



ADDITIONAL OPTIONS

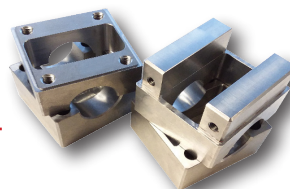
- eco300 series controller
- MX series controller
- MetriX series controller
- Onsite installation
- Remote access and upgrades
- Probeless operation
- New rotary encoders (5-30 VDC)
- Custom paint colors
- New Ladle Stand

MANUFACTURERS

- Rimrock
- Advance
- Ube
- Snair



New arm ends in stock for replacement parts, weld style and bolt style



Remanufactured Equipment & Components