

## MX410 CONTROLLER



### Powerful, Simple, and Reliable

The MX family of controllers for automatic ladlers and sprayers are advanced performance driven controllers. These controllers utilize the powerful and reliable Allen Brady CompactLogix PLC processors, Kinetix servo drives, and energy efficient MPL/MPM servo motors. All MX family controllers come standard with a programmable safety controller that gives operators and maintenance personnel detailed safety circuit fault information. The safety controller can also be easily expanded and programmed to meet the safety requirements for any cell configuration.

Programming and operation of the MX controller is done using a large 10.4" color touchscreen along with operator friendly push buttons mounted in the door. The powerful touchscreen has built in help screens for every feature and setting in the controller as well as pop-up troubleshooting help for all faults the controller detects. In addition to user defined password settings, the touchscreen can store 100 separate setup files for the ladle and the sprayer.

The MX family of controllers can be configured to operate various manufacturers sprayers and ladlers including Rimrock, Advance, Ube and Snair. The MX410 controller was specifically engineered for a Rimrock 410 servo sprayer. Controller comes standard with new servo motors, motor mounting brackets, and sprayer harness.

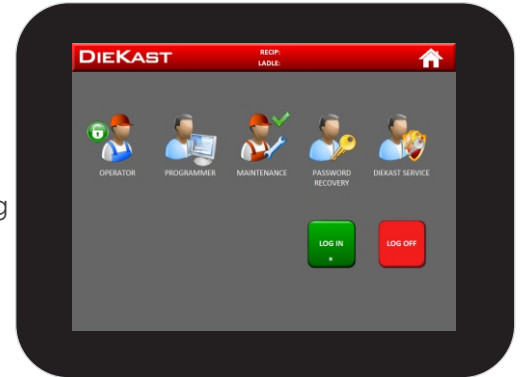
To learn more about how the MX410 controller can improve your performance, save you time and money contact your DieKast sales representative to schedule an onsite demonstration.

FOR MORE INFORMATION  
call (616)298-8572  
4314 136th Ave  
Holland, MI 49424  
[sales@diekast.com](mailto:sales@diekast.com)

## MX410 CONTROLLER

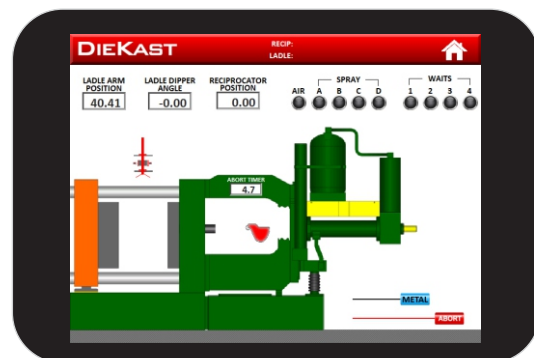
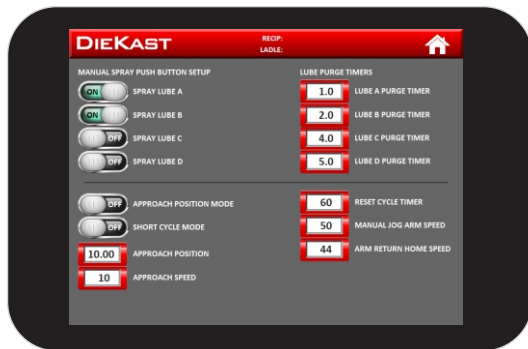
### System Features

- Allen Bradley Compact Logix L16 processor and I/O Modules.
- New 10.5" Color touch screen with 800MHz cortex A8 processor.
- New Allen Bradley Kinetix 300 Servo Drives
- Push buttons mounted in cabinet door allow for easy operation.
- Full description fault codes, with built in troubleshooting
- Allen Bradley MPL/MPM Servo Motors
- Banner XS26-2E programmable safety controller with detailed troubleshooting information, flexible configurations, and expandability
- ANSI B152.1-2000 Safety Compliant.
- Set up multiple users & access levels
- Stores 100 user defined setup programs
- Design allows for fast and easy programming.
- Ability to password protect setup screens
- Advanced communications capabilities provide flexible interlocking options with other equipment including produce and consume tags



### Optional Features

- Remote push button station
- Controller stand
- Set up pendant
- Customer specific screens to accommodate additional process requirements
- Custom push button & selector switch layouts for manual operations
- Quick disconnect plug for machine interlocks
- Separate push button enclosure
- Managed ethernet switch (Replaces the un-managed switch)
- Remote access capabilities
- Electrical panel air conditioner



### Specifications

- 42" x 36" x 12" NEMA 4 Enclosure
- Input voltage 480 Vac, 3Φ
- 24 Vdc Logic
- **Ambient Temperature:** 50°C (122°F)

FOR MORE INFORMATION  
call (616)298-8572  
4314 136th Ave  
Holland, MI 49424  
[sales@diekast.com](mailto:sales@diekast.com)