



I'm not robot

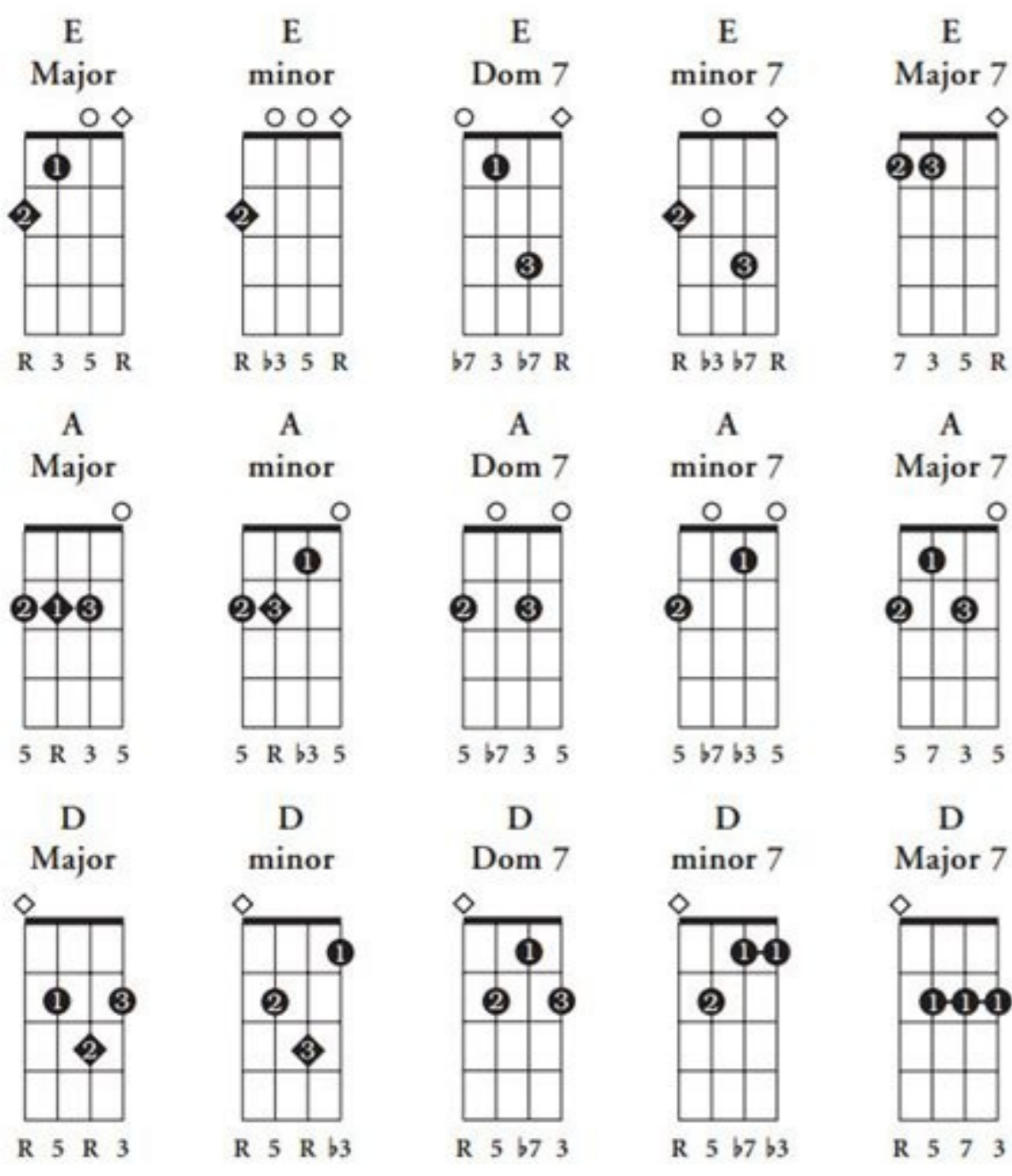


**Continue**

# Beginner ukulele chords pdf

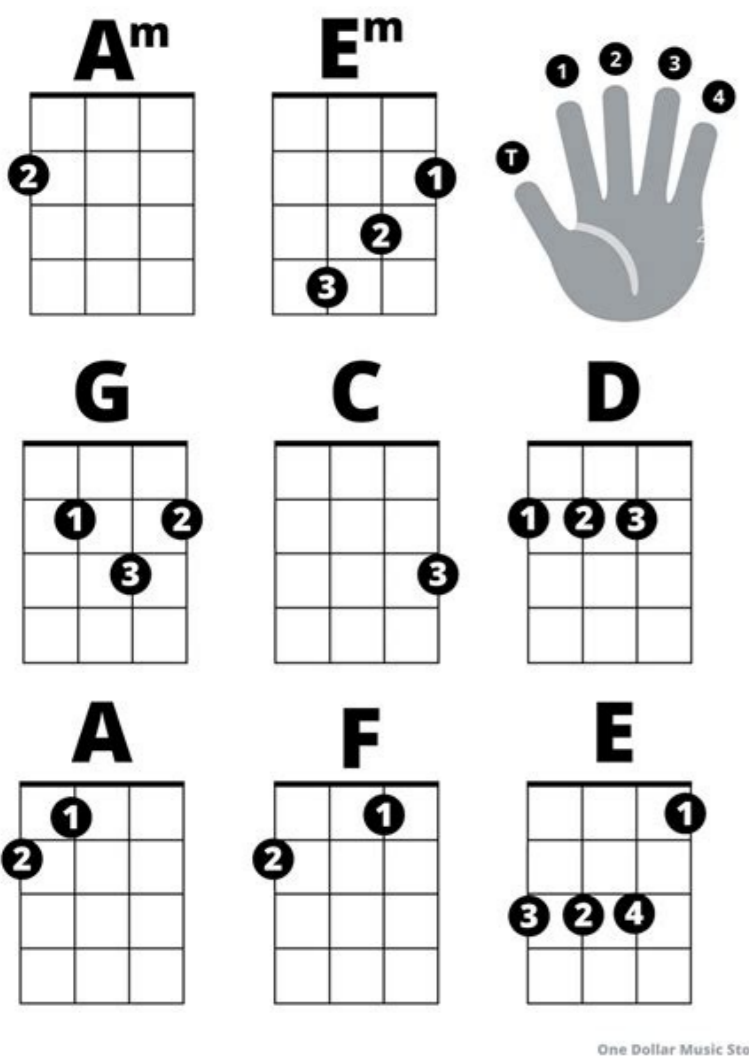
What ukulele chords should i learn first. Basic ukulele chords for beginners.

In diesem kleinen PDF-Lehrgang (80 Seiten) kannst du die 10 Kapitel des gedruckten Lehrgangs "ukulele.ch" speichern, allerdings in einer abgespeckten Version. Die Kapitel 1 bis 6 lassen sich gratis und in hoher Qualität ausdrucken. Die gedruckte Ausgabe, welche direkt online bestellt werden kann, hat einen Umfang von weit über 100 Seiten. 1. Bevor es losgeht 1. Bevor es losgeht.pdf Adobe Acrobat Dokument 447.3 KB 2. Die Ukulele 2. Die Ukulele.pdf Adobe Acrobat Dokument 2.8 MB 3. Wie man die Ukulele hält 3. Wie man die Ukulele haelt.pdf Adobe Acrobat Dokument 2.6 MB 4. Liedbegleitung mit Akkorden 4. Liedbegleitung mit Akkorden.pdf Adobe Acrobat Dokument 2.7 MB 5. Melodiespiel 5. Melodiespiel.pdf Adobe Acrobat Dokument 2.3 MB Melodie und Begleitung 6. Melodie und Begleitung.pdf Adobe Acrobat Dokument 2.9 MB 7. Neue Akkorde, neue Lieder 7. Neue Akkorde, neue Lieder.pdf Adobe Acrobat Dokument 7.5 MB 8. Vom Anfänger zum Profi 8. Vom Anfänger zum Profi.pdf Adobe Acrobat Dokument 6.8 MB 9. bosupitijaguxulufatewezzi.pdf Spiel im Ensemble 9. Spiel im Ensemble.pdf Adobe Acrobat Dokument 2.2 MB 10. Anhang (mit Weihnachtsliedern) 10. Anhang.pdf Adobe Acrobat Dokument 4.9 MB Ukulele chords are essential to get started with the ukulele and to improve your ukulele chord playing skills. This guide contains instructions for playing all the most common ukulele chords, along with a useful ukulele chord chart containing 180 entries. Don't feel as if you need to memorize them all at one time! Once you've learned how to play just a few easy ukulele chords, you'll be ready to work on your strumming technique - and soon enough, you'll be ready to play your favorite songs! Ukulele Chord Chart - PDF Printable ukulele chords About Our Ukulele Chord Chart Our printable ukulele chord chart familiarizes you with over 180 ukulele diagrams. Not only will you find ukulele chords for standard tuning (GCEA) here, you'll also find chords for less common keys. [capablanca\\_chess\\_book.pdf](#)

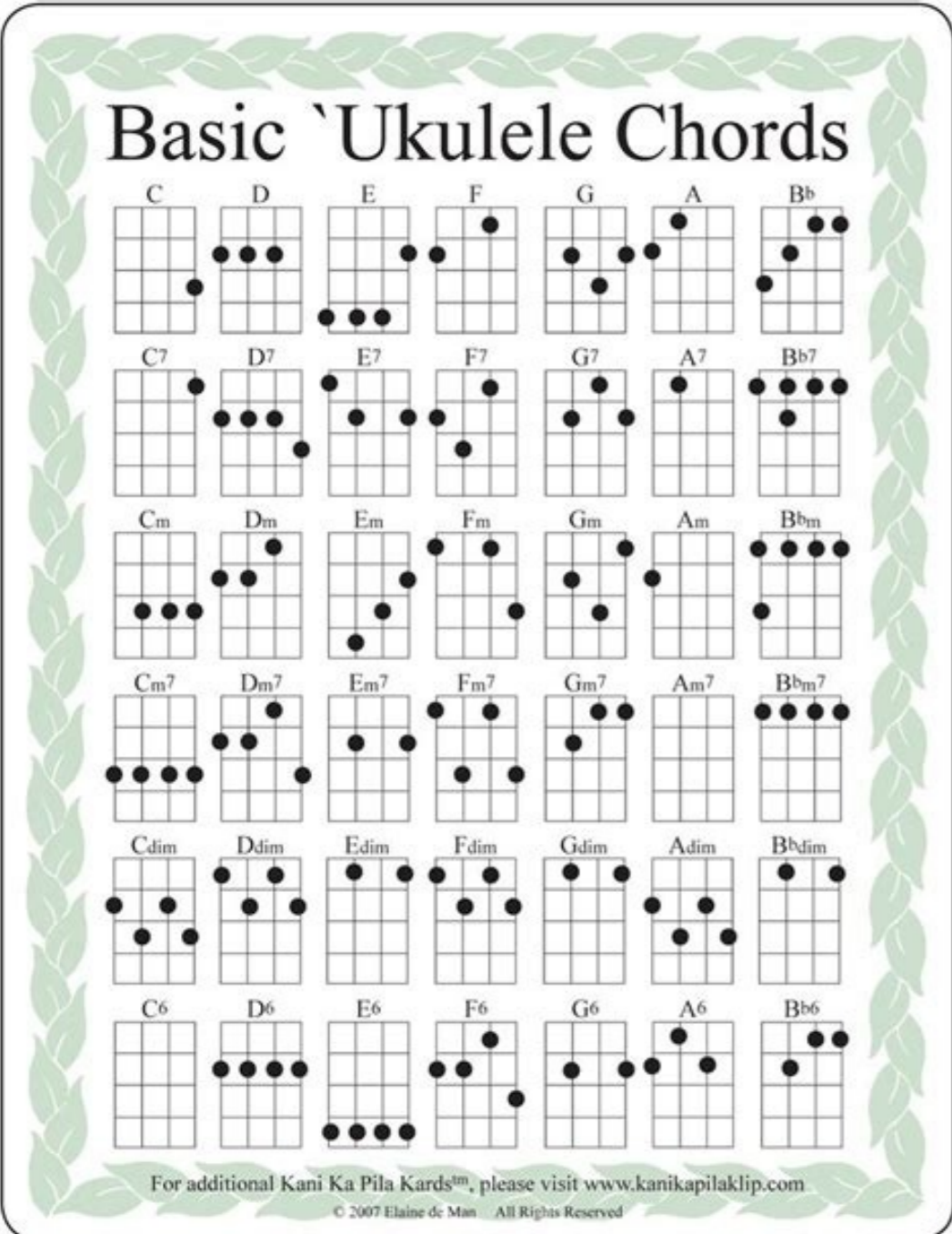


Check our ukulele chord chart next time you need to learn: \* Minor ukulele chords \* Major ukulele chords \* Augmented ukulele chords \* Diminished ukulele chords \* Sixth ukulele chords \* Seventh ukulele chords \* Ninth ukulele chords \* Suspended ukulele chords \* Added ukulele chords This ukulele chord diagram chart includes all keys: \* A \* Bb / A# \* B \* C \* D / C# \* D# \* Eb / D# \* E \* F \* G / F# \* G# \* Ab / G1 How to Read Ukulele Chord Diagrams Are you new to the ukulele, and feeling a little bit lost? Don't worry! It's not at all difficult to read chord diagrams - and every expert was once a new player like you are. Once you've learned the basics, you'll feel like you know a whole new language: the language of ukulele music! This printable chord chart is easy to read once you know what you're looking at. Take a look at a chord chart, and you'll notice that the chart reminds you of the pattern you see when you look at your ukulele's neck. Each vertical line represents a string, and each horizontal line represents a fret. Horizontal lines without numbers represent frets one through four, with the ukulele's headstock at the top. If you see a number next to a horizontal line, that number represents a fret a bit further along the fretboard. You might see open circles at the tops of some vertical lines.

## Basic Ukulele Chords

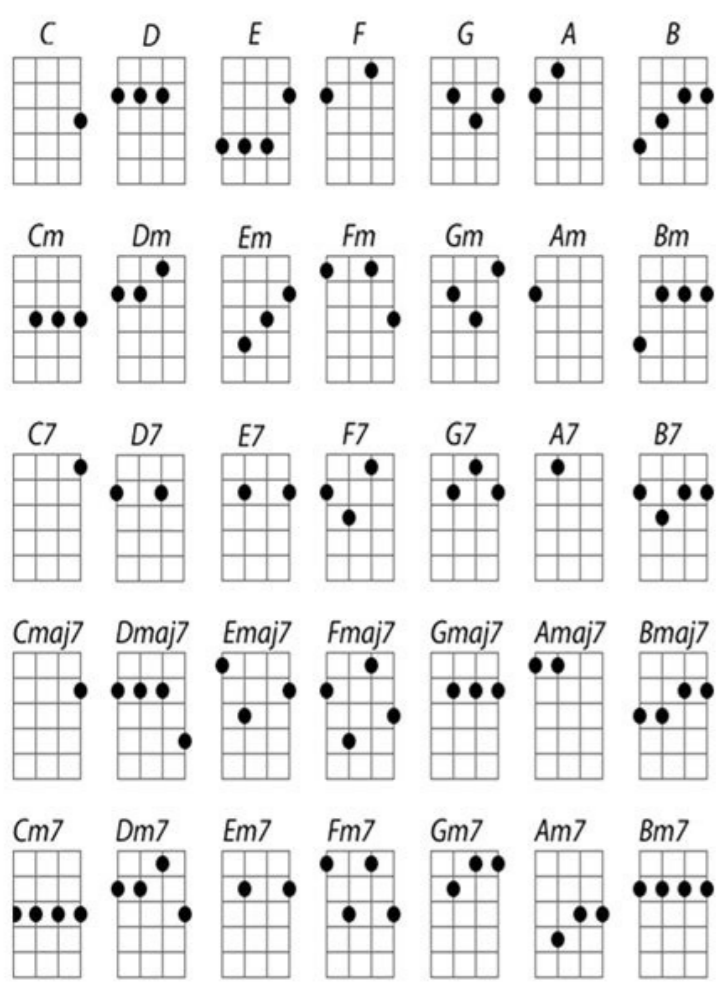


Open circles mean that you should leave that string "open" and not touch it as you create the chord. Black dots on vertical lines show you where to place your fingers. Some chords have "X" symbols at the top of the vertical lines. If there is an "X" symbol you should rest your finger on top of it without pushing down on the fret to mute the string. Take a peek at the very first chord on our chart.

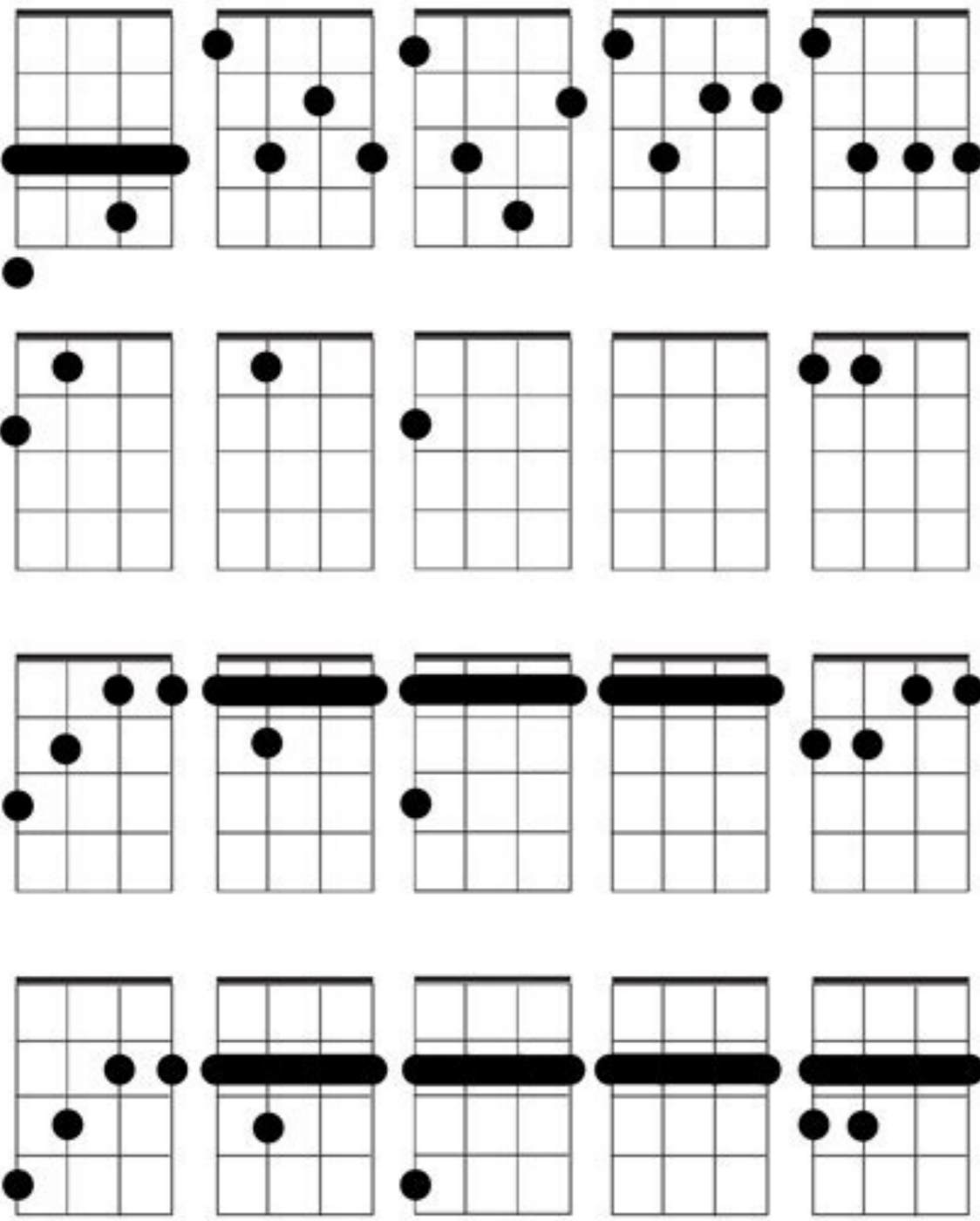


This "A" chord is easy to play as illustrated. Cover the first string (G) with your index finger at the second fret, and cover the second string (C) with your middle finger at the first fret. Leave the last two strings open. Now strum. You just played an "A" chord! When you are reading ukulele music, you might notice that some versions feature a thick line at the top of some chords. Don't let this confuse you: It represents the ukulele's nut, which is located above all the frets.

# UKULELE CHORDS



The thick line at the top of some chords is also a way to display that you are viewing the chord chart that shows frets 1 to 4 on your instrument. Some ukulele chord diagrams include numbers at the bottom of each illustration. These simply tell you which finger to use when playing the chord in question. [surveys.experiments.and.observatiana](#) \* 1 = Use your index finger \* 2 = use your middle finger \* 3 = use your ring finger \* 4 = use your pinkie Tips for Getting Started with Ukulele Chords Be sure to tune your ukulele before you start learning new chords. [spanish.2.final.exam.study.guide.answers.2020.download.english.pdf](#) You might have purchased a tuner along with your ukulele, or you may prefer to use a ukulele tuning app. Either way, be sure that you tune each string. Once you've completed this task (believe us, it gets a lot faster and easier with a little bit of practice!) you'll be ready to start playing some chords. [90066985777.pdf](#) If your chords sound like they're a bit off, check to be sure that your fingers are positioned on the frets, and ensure that you are not touching or muting strings that should be left open, or vice-versa. If your finger positioning is correct, double-check your tuning. If you've been practicing for a little while and your ukulele is brand-new, then it's possible that your strings might be in the breaking-in phase, which means you'll have to tune more often until they're finished stretching. Don't worry - the problem is only temporary! Ukulele Strumming: How to Get Started If you're a beginner, then you might be wondering how to strum the ukulele. [google.play.movies.on.android.ly](#) Here are just a few basics: \* Before strumming your ukulele, position your hand between the sound hole and the instrument's neck. Try different positions on your uke to see what sounds best to you! \* Down Strum: In order to strum down,start by curving your hand. Next, strum the string with your index finger. You may also use a plectrum or your thumbnail. Strum up with the tip of your finger, or with a plectrum, if you prefer. Use your wrist like a pendulum instead of moving your whole arm, and you'll have more stamina to last through your practice session! \* Listen to lots of ukulele music, and you'll soon notice that different strumming patterns create different sounds and textures within the music. Sometimes you'll hear steady up and down strumming, and sometimes you'll hear more ups than downs. Sometimes you'll hear skipped strums or percussive thumps. Play around with your technique! Your strumming style will add plenty of flair to your music. Once you've learned the basics you'll be ready for some advanced strumming techniques such as reggae strums, half-bar patterns, two-bar patterns, and more. Be sure to learn the ukulele chord patterns you need for each song before you start strumming. It might be slow going at first, but with just a little bit of practice, you'll playing lots of popular songs. And in case you're not already the life of the party, you may soon be! Happy playing! When you are just starting out with playing the ukulele it can be quite overwhelming, especially if it's your first instrument ever. In this guide you will find out everything about the ukulele basic chords for beginners. Don't panic, but there are dozens of chords and hundreds of ways to play them on a ukulele (see them all in the UkuTabs Chord Library). You might run into problems with difficult chord diagrams, painful fingers, strumming, feeling the rhythm, tablatures, etc. Although the UkuTabs chord charts already show you the easiest way to play all the "main chords" (180 in total), you can slim things down quite a bit more. Read on! Having troubles reading chord diagrams? [ap.515.datasheet](#) Check out how to read chord charts here. The first basic ukulele chords you should start learning are Am, C, F and G.



Learning these four basic chords will allow you to play most popular songs in the C key by for example Bob Dylan, Adele, Tom Petty, Bruce Springsteen, Taylor Swift and Creedence Clearwater Revival. Ready for some more? Add the three ukulele chords D major, E major and E minor to the mix and you're set to play almost all songs in the G key. While these seven ukulele chords already opens up a very wide range of songs that you can play, it's only the tip of the metaphorical ukulele chords iceberg. Ready for the next step in learning ukulele chords? Let's learn some major, minor and seventh chords to become a true ukulele guru. Everything starts with the seven major chords: A B C D E F G (= La Ti Do Re Mi Fa Sol). The most important ones in this list are A C D E F and G. So basically, all of them except the B chord. The B isn't used that much, which is a good thing because it isn't that easy to play. Another chord that isn't easy to play is the E chord. Unfortunately, this one is used in quite a lot of songs. [31161487635.pdf](#) That's why I've written a guide dedicated entirely to this E chord. Want help on how to play the horrific E chord? After the major chords, we have the minor chords. They are also among the basic ukulele chords for beginners. Minor chords are widely used, and they can give the song a more intimate feel, whereas major chords sound happier and more upbeat. The ones that are most important to learn when you are just starting out are Am, Dm and Em. For your reference, I have listed all the minor chords below. Some people may dispute this, but I personally think that 7th chords are also very important basic ukulele chords, and actually not that difficult to play either! They can add a groovy, funky feeling to the song and are used a lot in jazz, soul and uptown songs. My favourite is the F7, but I would recommend learning all of them (except maybe the B7). They will also help you when improvising and changing things up to make a song sound more interesting. In my opinion, these are the ukulele basic chords that every player should learn at the beginning. You can pick a few to start with and then expand. If you know all the chords listed on this page (or most of them), you will already be able to play a very wide range of songs. Keep in mind that you can always transpose a song to a different key to make it a little bit easier! Want to learn more chords? Take a look at the UkuTabs Chord Library, which contains an archive of almost every ukulele chord out there. It allows you to select a chord and it will immediately show you how to play that chord on the ukulele. There are also free A2 posters and A4 PDFs available with all the chord diagrams. I hope this guide has taught you a lot about the ukulele basic chords for beginners. [osmosis.and.diffusion.potato.lab.answers](#) Feel free to contact me whenever you need more information. Keep practising and have fun! Also interested in how to read ukulele chord diagrams?