

# VIS-68

HD

Video Medical Endoscopy System

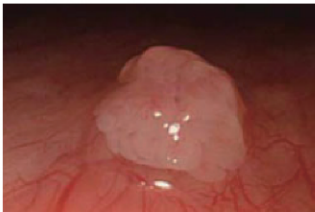
Choose your system for  
clearer diagnosis



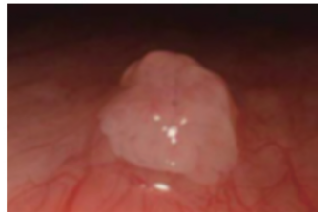


## High Definition Images

The VIS-68 endoscopy processor in combination with HQ scopes delivers the sophisticated endoscopic images via improved image processing technology, enhanced color reproduction, minimized image noise and reduced halation.



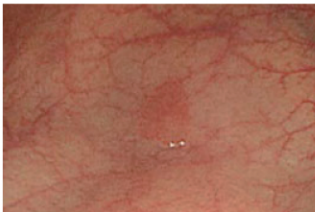
high definition image



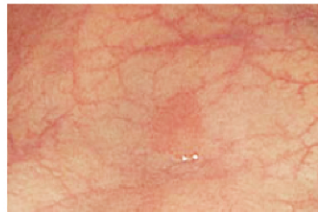
standard definition image

## IPS Display Screen

The IPS display screen with 60fp/s capacity presents the optimal color reproduction for both still and dynamic endoscopic images

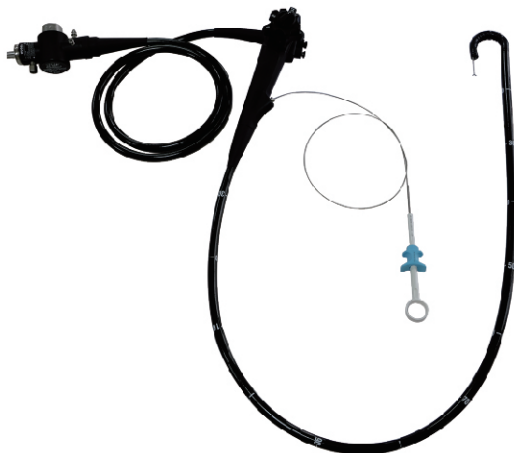


IPS display



LCD display

## Million Pixels High Resolution CMOS Endoscopes



## Specification

### ► VIS-68 Video Endoscopy System

Power Supply	Voltage	100-240V AC
	Frequency	50-60Hz
	Consumption electric power	150VA
Size	Dimensions (W x H x D)	375*320*130mm
	Weight	9.5kg(with monitor)
Observation	Digital signal output	DVI*1, HDMI*1
	White balance adjustment	Automatic WB
	Color adjustment	±5, total 11 levels
	Color saturation adjustment	0-10, total 11 levels
	Brightness adjustment	0-10, total 11 levels
Documentation	Image capture	Yes
	Video record	Yes
	Image and video storage	SD card compatible
	Data management	Assign one file for each case
Illumination	Examination lamp	LED lamp 40W
	Average lamp life	35000 hours
	Color temperature	5300K
	Brightness adjustment	Manually
Air Feeding	Pump	Diaphragm type pump
Water Feeding	Method	Feed water by pressurizing the detachable water container with air

## Specification

### ► GVE-68 Series Gastroscope

		GVE-68Q	GVE-68P
Optical System	Field of view	145°	
	Direction of view	Forward viewing	
	Depth of view	3-100mm	
Insertion Section	Distal end diameter	9.2mm	8.0mm
	Insertion tube diameter	9.2mm	8.0mm
Instrument Channel	Diameter	2.8mm	2.2mm
Bending section	Angulation range	UP/DOWN210° /90° ; LEFT/RIGHT 100° /100°	
Length	Working length	1050mm	

### ► CVE-68 Series Colonoscope

		CVE-68T	CVE-68L	CVE-68I	CVE-68S
Optical System	Field of view	145°			
	Direction of view	Forward viewing			
	Depth of view	3-100mm			
Insertion Section	Distal end diameter	12.8mm			
	Insertion tube diameter	12.8mm			
Instrument Channel	Diameter	3.7mm			
Bending section	Angulation range	UP/DOWN180° /180° ; LEFT/RIGHT 160° /160°			
Length	Working length	1700mm	1550mm	1330mm	600mm

### ► VB-68 Series Bronchoscope

		VB-68Q	VB-68PL
Optical System	Field of view	120°	
	Direction of view	Forward viewing	
	Depth of view	3-50mm	
Insertion Section	Distal end diameter	5.8mm	4.2mm
	Insertion tube diameter	5.3mm	3.8mm
Instrument Channel	Diameter	2.0mm	No
Bending section	Angulation range	UP/DOWN 180° /130°	
Length	Working length	600mm	

Specifications and design are subjected to change without any notice or obligation on the part of the manufacturer. 05/18