

BUY IT AT LESSER PRICES



900&700 SERIES

Free Standing combination oven



VISION
DISTRIBUTION



900&700 SERIES

Free Standing combination oven



Model: FSG-905 / FSG-705
4-Burner Gas Range with Oven

Model: FSG-906 / FSG-706
Gas Griddle (2/3 Flat&1/3 Grooved) with Cabinet

Model: FSG-909 / FSG-709
Gas Bain Marie with Cabinet

Model: FSG-910 / FSG-710
Gas Pasta Cooker with Cabinet

FSG-RO-100 / FSG-RO-60
Gas Soup Kettle

FSG-RS-80 / FSG-RS-60
Gas Tilting Braising Pan

Model:	Dimensions(mm):	Packing Size(mm):	Inner Oven Size(mm):	Power:	N/W:
FSG-905	800x900x920	800x980x1040	560x700x270	64348 BTU/Hour	156Kg
FSG-705	700x750x920	780x830x1040	560x700x270	64348 BTU/Hour	117Kg
FSG-906	800x900x920	880x980x1040	-	40389 BTU/Hour	125Kg
FSG-706	700x750x920	780x830x1040	-	40389 BTU/Hour	95Kg
FSG-909	800x900x920	880x980x1040	-	54765 BTU/Hour	90Kg
FSG-709	700x750x910	780x830x1040	-	54650 BTU/Hour	78Kg

Model:	Dimensions(mm):	Packing Size(mm):	Capacity:	Power:	N/W:
FSG-910	800x900x920	880x980x1040	-	80778BTU/Hour	100Kg
FSG-710	700x750x920	780x830x1040	-	80778BTU/Hour	82Kg
FSG-RO-100	800x900x920	880x980x1040	100L	25KW / 85300BTU	137Kg
FSG-RO-60	700x750x920	780x830x1040	60L	23KW / 78476BTU	112Kg
FSG-RS-80	800x900x920	880x980x1040	80L	24KW / 81888BTU	140Kg
FSG-RS-60	800x750x920	880x830x1040	60L	18KW / 61416BTU	122Kg



Model: FSG-907 / FSG-707
Gas Lava Rock Grill with Cabinet

Model: FSG-908 / FSG-708
2-Tank 2-Basket Gas Fryer with Cabinet

Model: FSG-911 / FSG-711
Gas French Hot Plate Cooker with Oven

Model: FSG-992/772 FSG-992E/772E
4-Burner Gas Range&Griddle with Gas Oven

Model: FSG-996/776 FSG-996E/776E
6-Burner Gas Range with Gas Oven

Model:	Dimensions(mm):	Packing Size(mm):	Power:	N/W:
FSG-907	800x900x920	880x980x1040	58188 BTU/Hour	137Kg
FSG-707	700x750x920	780x830x1040	49288 BTU/Hour	113Kg
FSG-908	800x900x920	880x980x1040	106106 BTU/Hour	120Kg
FSG-708	700x750x920	780x830x1040	106106 BTU/Hour	102Kg
FSG-911	800x900x920	880x980x1040	49815 BTU/Hour	165Kg
FSG-711	700x750x920	780x830x1040	49815 BTU/Hour	122Kg

Model:	Dimensions(mm):	Packing Size(mm):	Inner Oven Size(mm):	Power:	N/W:
FSG-992	1200x900x920	1280x980x1040	560x700x270	79500 BTU/Hour	212Kg
FSG-772	1050x750x920	1130x980x1040	560x700x270	79500 BTU/Hour	171Kg
FSG-992E(Electric Oven)	1200x900x970	1280x980x1040	560x700x270	63800 BTU/Hour	171Kg
FSG-772E(Electric Oven)	1050x750x920	1130x980x1040	560x700x270	63800 BTU/Hour	154Kg
FSG-996	1200x900x920	1280x980x1040	560x700x270	88992.8 BTU/Hour	208Kg
FSG-776	1050x750x920	1130x980x1040	560x700x270	88992.8 BTU/Hour	155Kg
FSG-996E(Electric Oven)	1200x900x920	1280x980x1040	560x700x270	72906 BTU/Hour	179Kg
FSG-776E(Electric Oven)	1050x750x920	1130x980x1040	560x700x270	72906 BTU/Hour	144Kg

BUY IT AT LESSER PRICES

VISION
DISTRIBUTION



900&700 SERIES

Free Standing combination oven



900&700 SERIES

Free Standing combination oven



FSE-905A

4-Plate Electric Cooker with Oven



FSE-906 / FSE-706

Electric Griddle with Cabinet



FSE-907 / FSE-707

Electric Lava Rock Grill



FSE-912/712 FSE-912E/712E

4-Plate Electric Cooker With Cabinet



FSE-TO-100 / FSE-TO-60

Electric Soup Kettle



FSE-TS-80 / FSE-TS-60

Electric Tilting Braising Pan

Model:	Dimensions(mm):	Packing Size(mm):	Volts:	Power:	N/W:	Note:
FSE-905A	800x900x920	880x980x1040	380V	20.8KW	128Kg	-
FSE-906	800x900x920	880x980x1040	380V	15KW	125Kg	2/3 Flat & 1/3 Grooved
FSE-706	700x750x920	780x830x1040	380V	9KW	118Kg	2/3 Flat & 1/3 Grooved
FSE-907	800x900x920	880x980x1040	380V	12KW	128Kg	-
FSE-707	700x750x920	780x830x1040	380V	9KW	96Kg	-

Model:	Dimensions(mm):	Packing Size(mm):	Volts:	Capacity:	Power:	N/W:
FSE-912	800x900x920	880x980x1040	380V	-	9.2	64Kg
FSE-712	700x750x920	780x830x1040	380V	-	9.2KW	56Kg
FSE-912E(Electric Oven)	800x900x920	880x980x1040	380V	-	14KW	104Kg
FSE-712E(Electric Oven)	700x750x920	780x830x1040	380V	-	13.6KW	94Kg
FSE-TO-100	800x900x920	880x980x1040	380V	100L	18KW	122Kg
FSE-TO-60	700x750x920	780x830x1040	380V	60L	12KW	88Kg
FSE-TS-80	800x900x920	880x980x1040	380V	80L	12KW	135Kg
FSE-TS-60	800x750x920	880x980x1040	380V	60L	10.5KW	122Kg



Model: FSE-908 / FSE-708

Electric Fryer with Cabinet



Model: FSE-909 / FSE-709

Electric Bain Marie with Cabinet



Model: FSE-910 / FSE-710

Electric Pasta Cooker with Cabinet

Model:	Dimensions(mm):	Packing Size(mm):	Volts:	Power:	N/W:	Note:
FSE-908	800x900x920	880x980x1040	380V	24KW	94Kg	2-Tank 2-Basket
FSE-708	700x750x920	780x830x1040	380V	24KW	78Kg	2-Tank 2-Basket
FSE-909	800x900x920	880x980x1040	380V	6KW	88Kg	-
FSE-709	700x750x920	780x830x1040	380V	5KW	72Kg	-
FSE-910	800x900x920	880x980x1040	380V	18KW	88Kg	-
FSE-710	700x750x920	780x830x1040	380V	18KW	78Kg	-



FSE-998

6-Plate Electric Cooker with Oven



Model:	Dimensions(mm):	Packing Size(mm):	Volts:	Power:	N/W:
FSE-998	1200x900x920	1280x980x1040	380V	28.8KW	179Kg

BUY IT AT LESSER PRICES



900&700 SERIES Luxury Combination Oven

- * Flame Sense of Security Device
- * Explosion-proof ignited a fire device
- * Accidental flame out protection device
- * Imported temperature-controlled device
- * Fryer over-temperature safety protection device
- * Luxury Metal Handle



VISION
DISTRIBUTION



LUXURY SERIES Combination Oven



GH-987A / GH-787A(700)
Gas Range With 4-Burner & Gas Oven



GH-987 / GH-787(700)
Gas Range With 4-Burner Cabinet



GH-986C
Gas Griddle With Cabinet (1/3 Grooved)

Model:	Dimensions(mm):	Inner Oven Size(mm):	Power:	N/W:
GH-987A	800x900x940	575x645x300	82000+20000BTU	143Kg
GH-787A(700)	800x730x940	575x645x300	55000+20000BTU	91Kg
GH-987	800x900x940	-	82000BTU	143Kg
GH-787(700)	800x730x940	-	55000BTU	91Kg
GH-986C	800x900x940	-	41000BTU	138Kg



GF-985 / GF-785(700)
Gas Fryer (2-Tank & 2-Basket)
With Cabinet



GH-988C / GH-788C(700)
Gas Pasta Cooker With Cabinet



GH-983A / 783A
Gas French Hotplate With Oven

Model:	Dimensions(mm):	Inner Oven Size(mm):	Griddle Size(mm):	Capacity:	Power:	N/W:
GF-985	800x900x940	-	-	28L	68000BTUx2	138Kg
GF-785(700)	800x900x940	-	-	28L	68000BTUx2	86Kg
GH-988C	800x900x940	-	-	-	42000BTU	82Kg
GH-788C(700)	800x900x940	-	-	-	42000BTU	63Kg
GH-983A	800x900x940	575x645x300	780x702x29	-	31000+2000BTU	119Kg
GH-783A	800x730x940	575x645x300	780x529x29	-	31000+2000BTU	102Kg

BUY IT AT LESSER PRICES



LUXURY SERIES

Combination Oven



GH-984 / GH-784A(700)
Gas Bain Marie With Cabinet



GH-988 / GH-788(700)
Gas Pasta Cooker With Cabinet



GH-989 / GH-789(700)
Gas Lava Rock Grill With Cabinet

Model:	Dimensions(mm):	Volume:	Power:	N/W:
GH-984	800x900x940	-	17000BTU	76Kg
GH-784A(700)	800x730x940	-	17000BTU	53Kg
GH-988	800x900x940	-	55000BTU	82Kg
GH-788(700)	800x730x940	-	24000BTU	63Kg
GH-989	800x900x940	-	55000BTU	121Kg
GH-789(700)	800x730x940	-	48000BTU	94Kg



GH-996A / GH-796A(700)
Gas Range With 4-Burner & Griddle & Oven



GH-999A / GH-799A(700)
Gas Range With 4-Burner & Lava Rock Grill & Oven



GH-997A / GH-797A(700)
Gas Range With 6-Burner & Oven

Model:	Dimensions(mm):	Inner Oven Size(mm):	Griddle Size(mm):	Power:	N/W:
GH-996A	1200x900x940	575x645x300	555x319x15	82000+20000+20000BTU	200Kg
GH-796A(700)	1200x730x940	575x645x300	555x319x15	55000+20000+17000BTU	170Kg
GH-999A	1200x900x940	575x645x300	-	82000+20000+27000BTU	205Kg
GH-799A(700)	1200x730x940	575x645x300	-	55000+20000+24000BTU	175Kg
GH-997A	1200x900x940	575x645x300	-	122000+20000BTU	200Kg
GH-797A(700)	1200x730x940	575x645x300	-	82000+20000BTU	175Kg



VISION DISTRIBUTION
LUXURY SERIES
Combination Oven



GH-974/774Z / EH-874Z/774Z
Gas / Electric Bain Marie With Cabinet



GF-975/775 / DF-875/775
Gas / Electric Fryer With Cabinet



GH-978/778 / EH-878/778
Gas / Electric Pasta Cooker With Cabinet

Model:	Dimensions(mm):	Capacity:	Power:	N/W:
GH-974	400x900x940	-	17000BTU/Hp	48Kg
GH-774Z	400x730x940	-	17000BTU/Hp	42Kg
EH-874Z	400x900x940	-	3KW	48Kg
EH-774Z	400x730x940	-	3KW	42Kg
GF-975	400x900x940	28L	68000BTU/Hp	52Kg
GF-775	400x730x940	28L	68000BTU/Hp	48Kg
DF-875	400x900x940	28L	9KW	52Kg
DF-775	400x730x940	28L	9KW	48Kg
GH-978	400x900x940	-	27000BTU/Hp	48Kg
GH-778	400x730x940	-	24000BTU/Hp	42Kg
EH-878	400x900x940	-	9KW	48Kg
EH-778	400x730x940	-	9KW	42Kg



GH-978C/778C / EH-878C/778C
Gas / Electric Pasta Cooker With Cabinet



GH-997/777
Gas Range With 2-Burner



GH-976/776Z / EH-876Z/776Z
Gas/Electric Griddle With Cabinet

Model:	Dimensions(mm):	Griddle Size(mm):	Power:	N/W:
GH-978C	400x900x940	-	27000BTU/Hp	48Kg
GH-778C	400x730x940	-	24000BTU/Hp	42Kg
EH-878C	400x900x940	-	9KW	48Kg
EH-778C	400x730x940	-	9KW	42Kg
GH-977	400x900x940	-	41000BTU/Hp	45Kg
GH-777	400x730x940	-	27000BTU/Hp	42Kg
GH-976	400x900x940	580x341x16	19000BTU/Hp	83Kg
GH-776Z	400x730x940	580x341x16	17000BTU/Hp	58Kg
EH-876Z	400x900x940	580x341x16	4.1KW	63Kg
EH-776Z	400x730x940	580x341x16	4.1KW	58Kg

BUY IT AT LESSER PRICES

Enjoy life and manufacturing

Delicious source



900 & 700 SERIES

LUXURY COMBINATION OVEN



VISION
DISTRIBUTION



LUXURY SERIES
Combination Oven



EH-887A
Electric Range With 4-Hot Plate & Oven



EG-886A / EG-786A(700)
Electric Griddle With Oven



EG-885 / EG-785(700)
Electric Fryer (2-Tank & 2-Basket) With Cabinet

Model:	Dimensions(mm):	Inner Oven Size(mm):	Griddle Size(mm):	Capacity:	Volts:	Power:	N/W:
EH-887A	800x900x940	575x645x300	-	-	3N~380V	19.5KW	-
EG-886A	800x900x940	659x565x280	625x500x15	-	3N~380V	11.6KW	128Kg
EG-786A(700)	800x730x940	659x565x280	600x450x16	-	3N~380V	11.6KW	110Kg
EG-885	800x900x940	-	-	28L	3N~380V	9+9KW	72Kg
EG-785(700)	800x730x940	-	-	28L	3N~380V	9+9KW	65Kg



EH-888C / EH-788C(700)
Electric Pasta Cooker With Cabinet



EB-889 / EB-789(700)
Electric Lava Rock Grill With Cabinet



EH-884 / EH-784(700)
Electric Bain Marie With Cabinet

Model:	Dimensions(mm):	Volts:	Power:	N/W:
EH-888C	800x900x940	3N~380V	9+9KW	82Kg
EH-788C(700)	800x730x940	3N~380V	9+9KW	63Kg
EB-889	800x900x940	3N~380V	9+9KW	72Kg
EB-789(700)	800x730x940	3N~380V	9+9KW	65Kg
EH-884	800x900x940	3N~380V	7.8KW	115Kg
EH-784(700)	800x730x940	3N~380V	7.8KW	95Kg

BUY IT AT LESSER PRICES



****FEATURES:**

- * The Housing is made of 304 stainless steel body, top panel with the thickness of 2.0mm
- * Metal knob and door, high-end design
- * Stretch forming worktop, easy to clean and nice looking
- * Equipped with flame failure device and flame size control device
- * Corn accessories (including hot plates and thermostats) made in Germany and Italy, are adopted to ensure stable and reliable performance.



HIGH-END SERIES
Combination Oven



FS900-RQ-4
Gas 4-Burner Range With Oven



FS900-RG
Gas Griddle (2/3 Flat, 1/3 Grooved) With Cabinet



FS900-RH
Gas Grill With Cabinet

Model:	Dimensions(mm):	Power:	N/W:
FS900-RQ-4	800x900x(850+70)	23KW	130Kg
FS900-RG	800x900x(850+70)	10KW	128Kg
FS900-RH	800x900x(850+70)	24KW	110Kg



FS900-RZ-2
Gas Fryer With Cabinet



FS900-RM-12
Gas Pasta Cooker With Cabinet



FS900-RB
Gas Bain Marie With Cabinet

Model:	Dimensions(mm):	Capacity:	Power:	N/W:
FS900-RZ-2	800x900x(850+70)	20L	28KW	108Kg
FS900-RM-12	800x900x(850+70)	-	24KW	106Kg
FS900-RB	800x900x(850+70)	-	5KW	68Kg



High-End Combination Oven Series

BUY IT AT LESSER PRICES



HIGH-END SERIES
Combination Oven



FS900-TB

Electric Bain Marie With Cabinet



FS900-TT-4A

Electric 4-Hot-plate Cooker With Oven (Square)



FS900-TM-12

Electric Pasta Cooker With Cabinet

Model:	Dimensions(mm):	Volts:	Power:	N/W:
FS900-TB	800x900x(850+70)	230V	6KW	63Kg
FS900-TT-4A	800x900x(850+70)	380V	21KW	123Kg
FS900-TM-12	800x900x(850+70)	380V	18KW	75Kg



FS900-TG

Electric Griddle (2/3 Flat, 1/3 Grooved) With Cabinet



FS900-TH

Electric Grill With Cabinet



FS900-TZ-2

Electric Fryer With Cabinet

Model:	Dimensions(mm):	Capacity:	Volts:	Power:	N/W:
FS900-TG	800x900x(850+70)	-	380V	10KW	128Kg
FS900-TH	800x900x(850+70)	-	380V	12KW	110Kg
FS900-TZ-2	800x900x(850+70)	18L		24KW	76Kg

VISION
DISTRIBUTION



600 SERIES

Table Top Combination Oven



FGH-564

Counter Top Gas Bain Marie



FGH-565

Counter Top Gas Fryer



FGH-566

Counter Top Gas Griddle

Model:	Dimensions(mm):	Thermal Power:	N/W:
FGH-564	700x630x530	4.2KW	29Kg
FGH-565	600x630x530	5.6KW (8L/罐)	25Kg
FGH-566	600x630x530	8.2KW	43Kg



600 SERIES

Table Top Combination Oven



FGH-567

Counter Top Gas Stove



FGH-568

Counter Top Gas Pasta Cooker



FGH-569

Counter Top Gas Lava Rock Grill

Model:	Dimensions(mm):	Thermal Power:	N/W:
FGH-567	600x630x530	16KW	45Kg
FGH-568	600x630x530	6KW	25Kg
FGH-569	600x630x530	6.2KW	50Kg

BUY IT AT LESSER PRICES

VISION
DISTRIBUTION



600 SERIES

Table Top Combination Oven



FEH-664

Counter Top Electric Pasta Cooker



FDF-665

Counter Top Electric Fryer
(2-Tank 2-Basket)



FEG-666

Counter Top Electric Griddle
(Flat)

Model:	Dimensions(mm):	Volts:	Power:	N/W:
FEH-664	600x650x480	220V	6KW	20Kg
FDF-665	600x650x480	3N~380V	8.5KW+8.5KW (12L/缸)	16Kg
FEG-666	600x650x480	3N~380V	7.8KW	51Kg



600 SERIES

Table Top Combination Oven



GH-564

Counter Top Gas Bain Marie



GH-565

Counter Top Gas Fryer



GH-566

Counter Top Gas Griddle

Model:	Dimensions(mm):	Griddle Size(mm):	Capacity:	Power:	N/W:
GH-564	600x650x480	-	-	14000BTU	29Kg
GH-565	600x650x480	-	12L	51000BTU	25Kg
GH-566	600x650x480	500x400x16	-	28000BTU	43Kg



600 SERIES

Table Top Combination Oven



FEH-667

Counter Top Electric 4-plate
Cooker



FEH-668

Counter Top Electric Pasta Cooker



FEB-669

Counter Top Electric Lava
Rock Grill

Model:	Dimensions(mm):	Volts:	Power:	N/W:
FEH-667	600x650x480	220V	8KW	18.5Kg
FEH-668	600x650x480	220V	6KW	20Kg
FEB-669	600x650x480	3N~380V	7.8KW	36Kg



600 SERIES

Table Top Combination Oven



GH-567

Counter Top Gas Stove



GH-568

Counter Top Gas Pasta Cooker



GH-569

Counter Top Gas Lava Rock Grill

Model:	Dimensions(mm):	Power:	N/W:
GH-567	600x650x480	55000BTU	45Kg
GH-568	600x650x480	21000BTU	25Kg
GH-569	600x650x480	28000BTU	50Kg

BUY IT AT LESSER PRICES

VISION
DISTRIBUTION



600 SERIES

Table Top Combination Oven



EH-664

Counter Top Electric Bain Marie



DF-665

Counter Top Electric Fryer
(2-Tank & 2-Basket)



EH-666

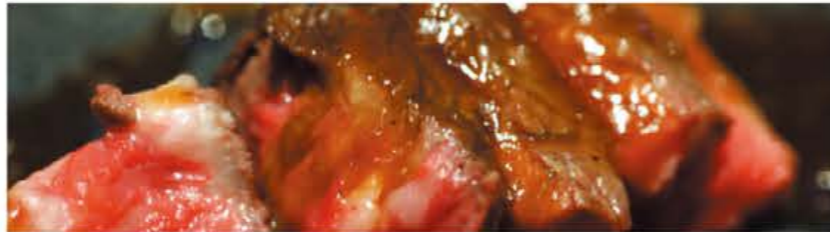
Counter Top Electric Griddle (flat)

Model:	Dimensions(mm):	Griddle Size(mm):	Capacity:	Volts:	Power:	N/W:
EH-664	600x650x480	-	-	220V	1.5KW	18Kg
DF-665	600x650x480	-	12L	220V	3.8KWx2	18Kg
EH-666	600x650x480	596x500x14	-	220V	5.4KW	51Kg



600 SERIES

Table Top Combination Oven



EH-667

Counter Top Electric 4-plate Cooker



EH-668

Counter Top Electric Pasta Cooker



EB-669

Counter Top Electric Lava Rock Grill

Model:	Dimensions(mm):	Capacity:	Volts:	Power:	N/W:
EH-667	600x650x480	-	220V	8KW	18.5Kg
EH-668	600x650x480	-	220V	6KW	20Kg
EB-669	600x650x480	-	3N~380V	7.8KW	36Kg



600 SERIES

Table Top Combination Oven



HGF-545

1-Tank Gas Fryer



HGF-565

2-Tank Gas Fryer



HGG-566

Gas Griddle

Model:	Dimensions(mm):	Capacity:	Heating Power:	Gas:
HGF-545	350x610x470	8L	-	LPG or Natural GAS
HGF-565	600x610x470	8L+8L	-	LPG or Natural GAS
HGG-566	600x610x350	-	8KW	LPG or Natural GAS



600 SERIES

Table Top Combination Oven



HGG-567

Gas Cooker



HGG-568

Gas Pasta Cooker



HGG-569

Gas Lava Rock Grill

Model:	Dimensions(mm):	Heating Power:	Gas:
HGG-567	600x610x350	55000 BTU	LPG or Natural GAS
HGG-568	600x610x350	21000 BTU	LPG or Natural GAS
HGG-569	600x610x350	28000 BTU	LPG or Natural GAS