

# On The Ballot

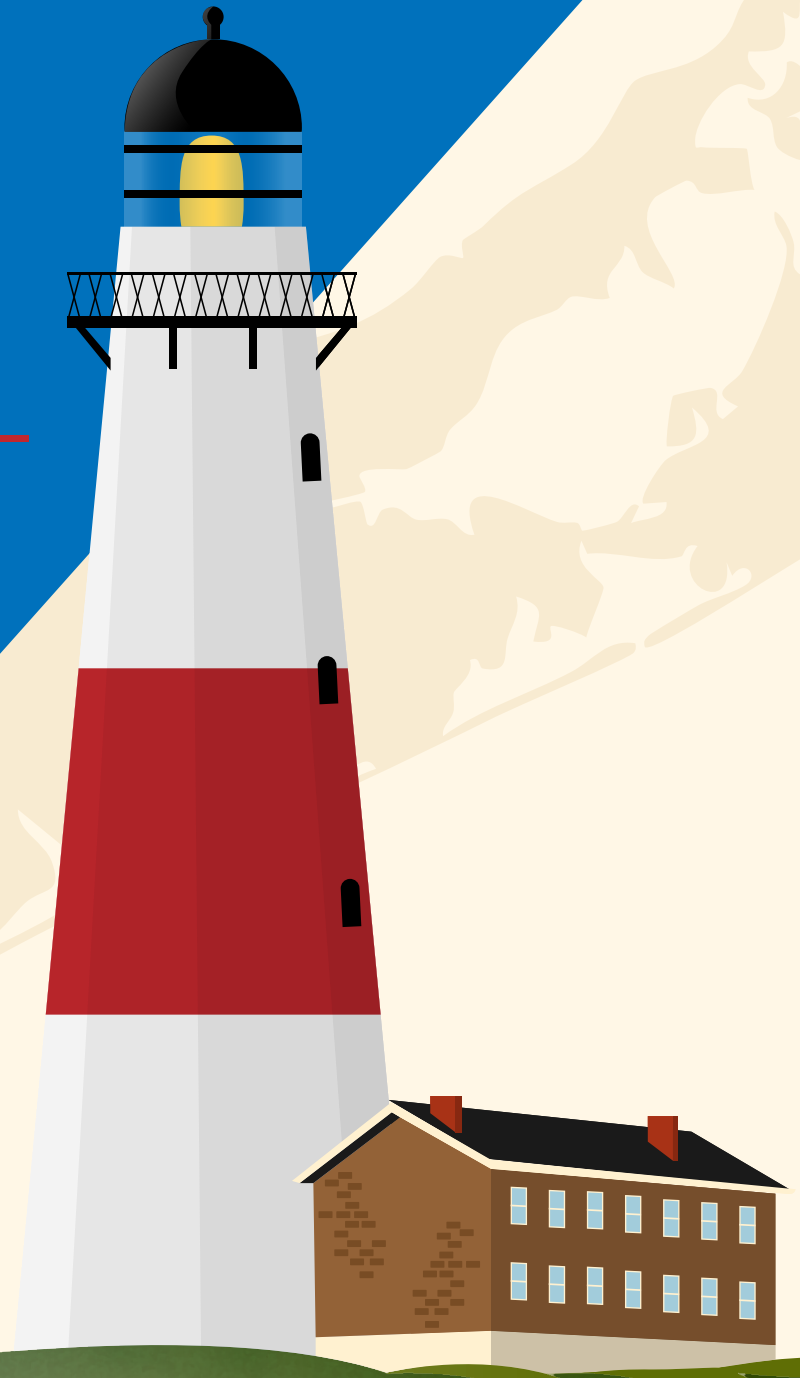
## Suffolk County, New York

---

### *Proposition Two, An Amendment*

A Short Presentation On Suffolk County, Prop Two &  
the Final Results of the General Election

By Kimberly Valdez



## *Where does our water come from?*



“The water that flows from every single spigot in Nassau and Suffolk County comes from groundwater aquifers and nowhere else.

Every drop entering Long Island’s groundwater aquifers flows to either a drinking water well or to the nearest stream, lake, bay, or harbor.”

[www.nature.org](http://www.nature.org)

## *What is the danger?*



“Scientific research shows that nitrogen pollution from untreated sewage is suffocating our bays and harbors and is in our drinking water. The harmful effects of excess nitrogen are far reaching from beach closings, fish kills, and harmful algal blooms to possible linkages to cancer.”

[www.voteyesprop2.com](http://www.voteyesprop2.com)

## *What is the Solution?*



Reversing years of contamination and implementing legislation while creating funds to enact plans that focus on removing pollutants in Long Island’s groundwater.

“It is critical that homes and businesses transition from conventional septic systems to the new advanced onsite wastewater treatment systems, known as innovative/alternate systems, or I/A systems for short.”

[www.nylcv.org](http://www.nylcv.org)

# Proposition Two

## An Amendment as written on the Ballot



Resolution No. 526-2024, "A Charter Law Pursuant To The Suffolk County Water Quality Restoration Act (Chapter 58 Of The New York State Laws Of 2023, As Amended) To Amend Article XII Of The Suffolk County Charter In Order To Extend And Revise The Suffolk County Drinking Water Protection Program And To Establish A New Water Quality Restoration Fund Supported By An Additional One Eighth Percent (1/8%) Sales And Use Tax"

Resolution No. 526-2024 Extends And Revises The Drinking Water Protection Program Funded By The Existing One Quarter Percent Sales And Use Tax, And Creates A New Water Quality Restoration Fund Supported By A One Eighth Percent Sales And Use Tax For Clean Water Projects.

Shall Resolution No. 526-2024, To Extend And Revise The Drinking Water Protection Program And Create A One Eighth Percent Sales And Use Tax To Modernize Suffolk's Sewers And Septic Systems To Improve The Quality Of Surface And Groundwater, Be Approved?

A Yes Vote Ensures County Funding To 2060 For Clean Water Projects, Improvements In Drinking Water, Bays And Harbors And A No Vote Continues Water Quality Degradation.

# What Does This Mean for Long Island?



“Prop 2 would allow an increase of the county’s sales tax to fund a water-quality restoration fund.

Generating \$3.1 billion from 2024 to 2060, the funds could be used to protect and rehabilitate groundwater, construct new sewage treatment infrastructure and replace polluting septic systems.”

[www.nylcv.org](http://www.nylcv.org)



“The Suffolk County Water Quality Restoration Act would expand sewers and provide tax-free grants to homeowners to replace polluting septic systems with clean water technology.

The Act would make wastewater infrastructure affordable to residents and businesses...

Unlock major opportunity to qualify for federal funding available for local clean water projects.”

[www.voteyesprop2.com](http://www.voteyesprop2.com)

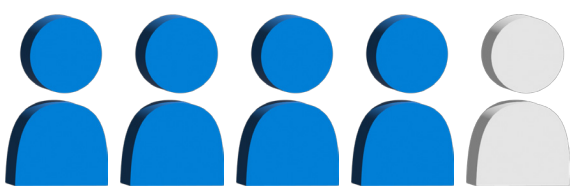


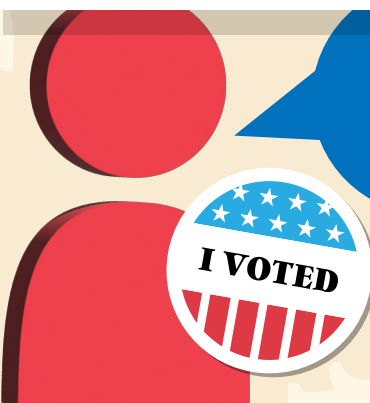
“The Suffolk County Water Quality Restoration Act would create thousands of good jobs, revitalize business districts, increase property values, and restore our local bays and harbors.”

[www.voteyesprop2.com](http://www.voteyesprop2.com)

# Suffolk County Statistics

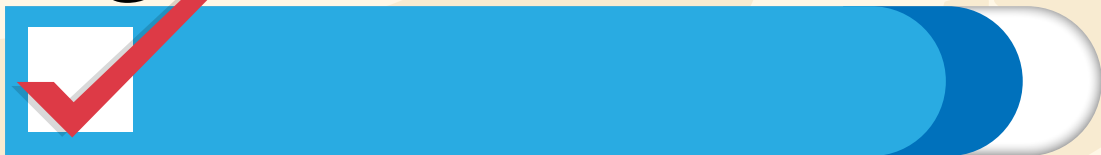
Population of Suffolk County  
**1,523,170 People**

**80%**   
of Suffolk County's population  
are 18 years of age or older

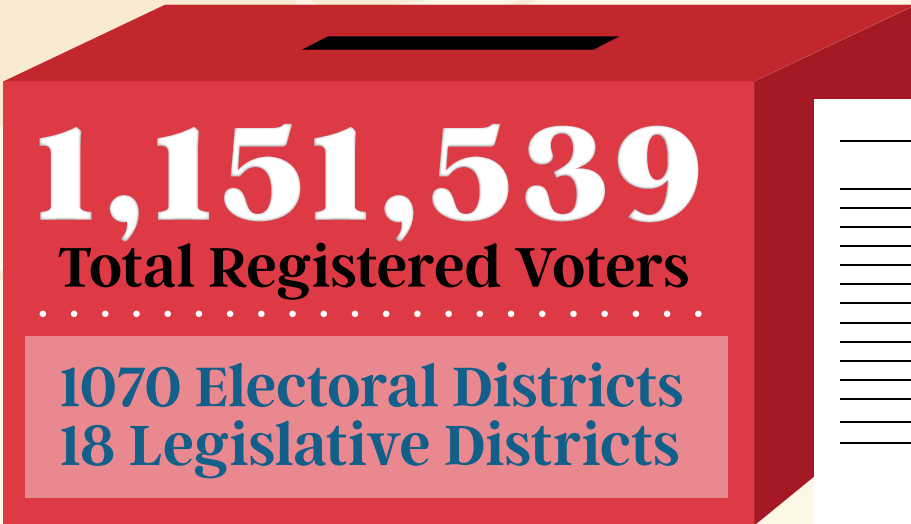


That's around  
1,218,536 people!

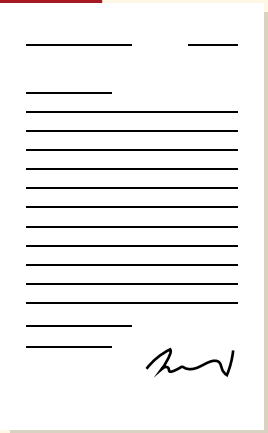
## Registered To Vote



**95%** of all adults in Suffolk County are  
currently registered to vote  
**1,086,474** are active voters  
**65,065** are inactive voters

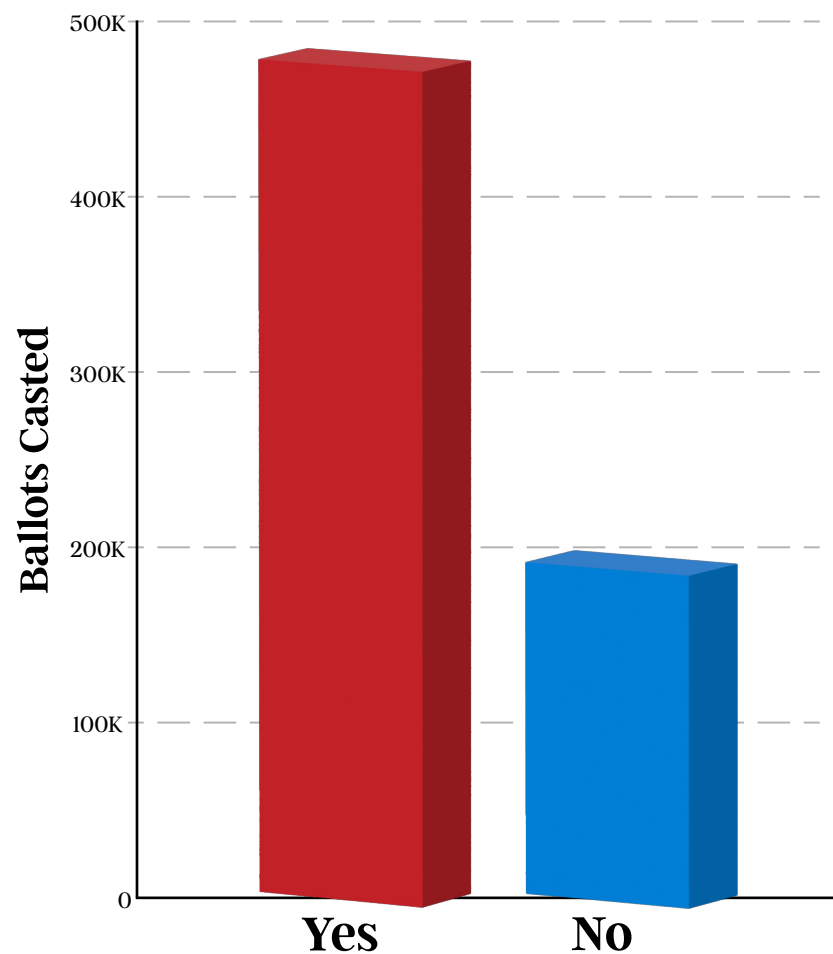


**1,151,539**  
Total Registered Voters  
.....  
**1070 Electoral Districts**  
**18 Legislative Districts**

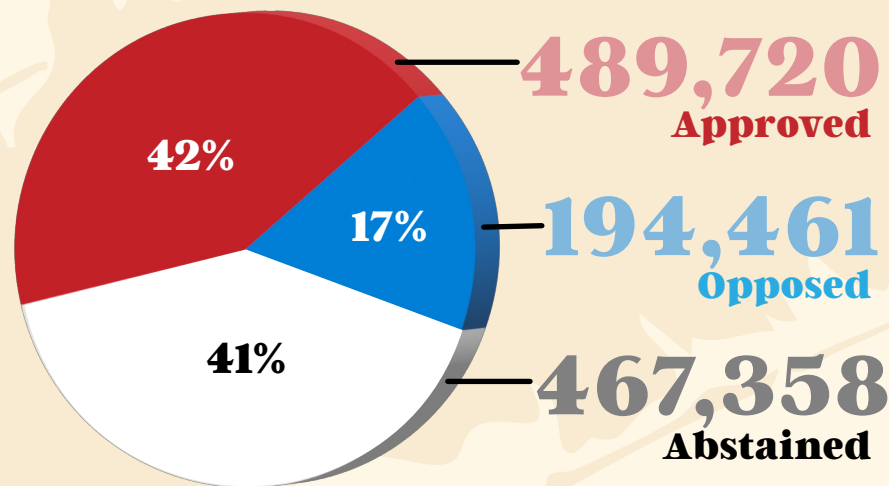


# Prop Two Election Results

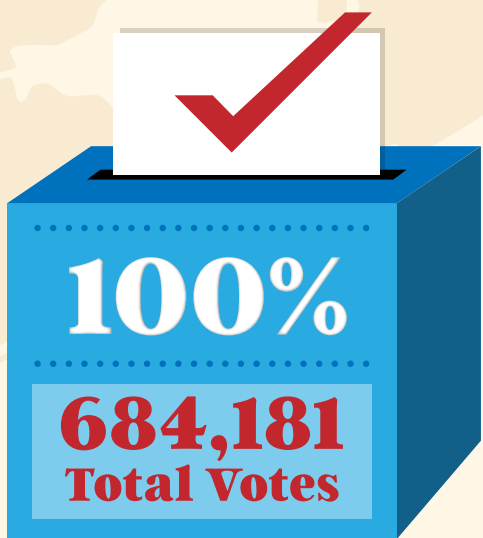
*Election Results*



*Percentage Including All Registered Voters*



*Votes Counted*



*Percentage of Ballots Casted*





# References



In order of appearance

---

[www.nature.org/en-us/about-us/where-we-work/united-states/new-york/stories-in-new-york/long-island-water-quality/where-does-our-water-come-from/](http://www.nature.org/en-us/about-us/where-we-work/united-states/new-york/stories-in-new-york/long-island-water-quality/where-does-our-water-come-from/)

[www.voteyesprop2.com](http://www.voteyesprop2.com)

[www.nylcv.org/news/suffolk-countys-prop-2-is-a-win-for-clean-water-and-public-health/](http://www.nylcv.org/news/suffolk-countys-prop-2-is-a-win-for-clean-water-and-public-health/)

[www.suffolkcountyny.gov/departments/boe](http://www.suffolkcountyny.gov/departments/boe)

[www.censusreporter.org/profiles/05000US36103-suffolk-county-ny/](http://www.censusreporter.org/profiles/05000US36103-suffolk-county-ny/)

[www.elections.ny.gov/enrollment-county](http://www.elections.ny.gov/enrollment-county)

[apps2.suffolkcountyny.gov/boe/eleres/24ge/index.html#at/0541e6cf-d5f5-402d-bc88-4fbaae88332d/ar/6013/ct/1036](http://apps2.suffolkcountyny.gov/boe/eleres/24ge/index.html#at/0541e6cf-d5f5-402d-bc88-4fbaae88332d/ar/6013/ct/1036)

[www.scnylegislature.us/199/District-Maps](http://www.scnylegislature.us/199/District-Maps)





*Thank You!*

---

