



WALOMED BASIN STREET TELEMEDICINE

BRIEFING PAPER:

WBST LEVEL 3 SPECIALTY SURGERY HOSPITALS

FOR RAPID CRISIS DEPLOYMENT,

RESPONSE & RECOVERY

DECEMBER 11, 2023



WALOMED BASIN STREET TELEMEDICINE

LEVEL 3 SURGERY HOSPITALS FOR RAPID RESPONSE CRISIS DEPLOYMENT

INTRODUCTION TO WBST

[Walomed Basin Street Telemedicine](#) (“WBST”) develops, selectively operates, or places with qualified Operators of, Energy Efficient, Clean Energy-powered, Cybersecure, Specialty Surgery Hospitals enabled by regulatory-compliant current state Telemedicine Technologies and Next Gen Internet and Information & Communications Technologies (“ICT”).

WBST is an affiliate corporate Joint Venture between [Walomed, LLC \(“Walomed”\)](#) and [Basin Street Technologies, Inc. \(“BST”\)](#). As Developer, WBST works with Center Owners around the world to deploy and implement cutting edge Off-the-Grid Telemedicine Centers that have highly reliable, high-speed Internet access, most anywhere on Earth, with truly Off-The-Grid Clean Energy SOLAR+STORAGE, Microgrid, Water Generation, and Cybersecurity Systems. WBST has developed three Telemedicine Center products: a 1,000 sq. ft. Primary Care Clinic for placement in high traffic public markets, a 3,000 sq. ft. Primary Care Clinic for stand-alone clinic operations, and a 4,000 sq. ft. Specialty Surgery Hospital, which may be specially configured for utilization in a Disaster Reentry and Recovery Crisis Area.

ABOUT WALOMED

The COVID-19 pandemic acted as a catalyst, igniting our commitment to revolutionize healthcare delivery. Our mission is simple yet profound: to bridge the healthcare gap by facilitating access to cutting-edge innovations. Based in Louisiana, WALOMED operates as a B2B and B2C telemedicine solutions and medical supplies provider. Through our e-commerce platform, we offer telemedicine software, hardware, and essential medical supplies, catering to customers across the U.S., Europe, Latin America, and Africa.

WALOMED’s mission is driven by our passion for universal healthcare access and the power of innovative technology. In a world where nearly thirty percent of the global population lacks access to essential health services, Dr. Yaye Sarr, a fervent healthcare advocate, founded WALOMED driven by the belief that quality healthcare should be available to all, irrespective of geography or circumstance.

WALOMED’s work extends beyond transactions; we pride ourselves on being enablers of change, providing top-tier products and also offer comprehensive training and technical support, ensuring seamless integration into healthcare systems worldwide. Our collaborations span governments, NGOs, the private sector, and international organizations, empowering clinics, hospitals, and emergency services with the tools needed for telehealth and digital healthcare infrastructure. *At WALOMED, we're not just selling products; we're catalyzing a global healthcare revolution.*



WALOMED BASIN STREET
TELEMEDICINE CENTERS

WALOMED BASIN STREET TELEMEDICINE

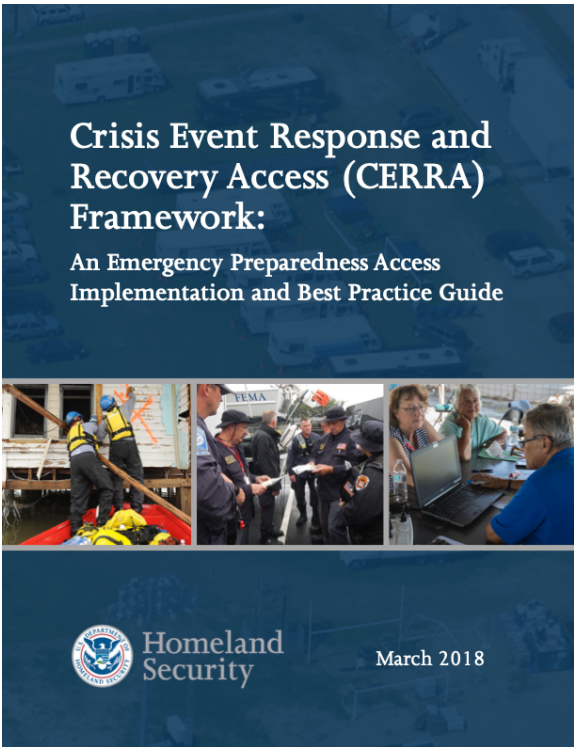
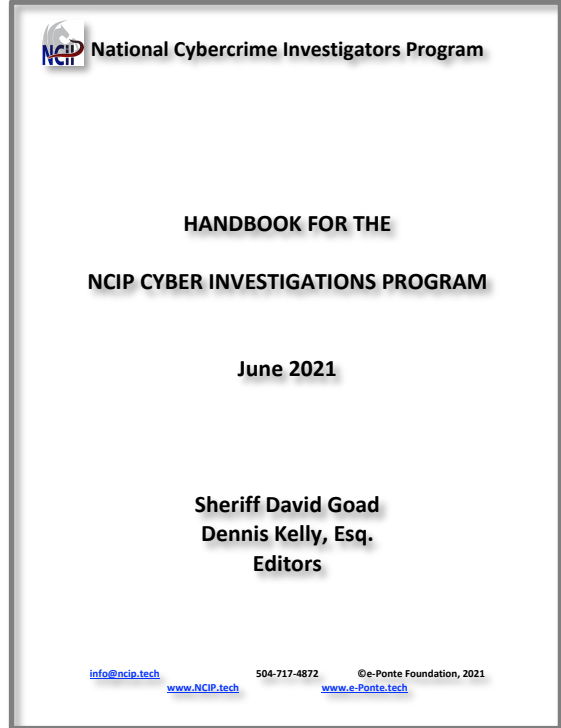
LEVEL 3 SURGERY HOSPITALS FOR RAPID RESPONSE CRISIS DEPLOYMENT

ABOUT BASIN STREET TECHNOLOGIES, INC.

BST is a Louisiana Subchapter C corporation whose roots lie in the telecom industry in the Caribbean. In deploying and operating telecom equipment, BST found that it also needed to be in the business of generating and storing electricity for telecom equipment operations through solar panels and Battery Energy Storage Systems (“BESS”).

Over time, BST has developed internal expertise in cybersecurity, as telecom systems are, by definition, vulnerable to cyberattacks and, as a by-product, become, themselves, attack vectors for the Cyberthreat. BST has long-standing relationships with the National Sheriffs’ Association (“NSA”) in enabling the law enforcement response to the cyberthreat, having served for more than 7 years as Vice Chair of the NSA Cybersecurity and Crime Work Group, Executive Staff of the NSA-supported National Cybercrime Investigators Program (“NCIP”) and Editor of the NCIP Handbook. At the Paris Peace Forum’s request, BST served on the 2022 Paris Peace Forum’s Cybersecurity Experts’ Roundtable on South-South Cybersecurity Collaboration.

Over time, BST’s Founders have been extensively involved in developing and deploying a Disaster Reentry and Recovery Protocol that was supported first by the National Sheriffs’ Association and the FBI’s private sector critical infrastructure affiliate, the InfraGard National Members Alliance. This Disaster Reentry protocol was implemented and further developed for nationwide deployment in the US by the U.S. Department of Homeland Security (“DHS”) and the Emergency Services Sector Coordinating Council (“ESSCC”)—the DHS-recognized voice for the Emergency Services Sector, one of 16 Critical Infrastructure Sectors. DHS and the ESSCC have branded the fully developed protocol as the “Crisis Event Response & Recovery Access (‘CERRA’) Protocol”. CERRA Best Practices are the subject of the DHS/ESSCC CERRA Framework, published by DHS in 2018. A 501(c)(3), the e-Ponte Foundation, owns and practices the intellectual property behind the CERRA Framework and works cooperatively with BST and others in implementing the CERRA Framework.



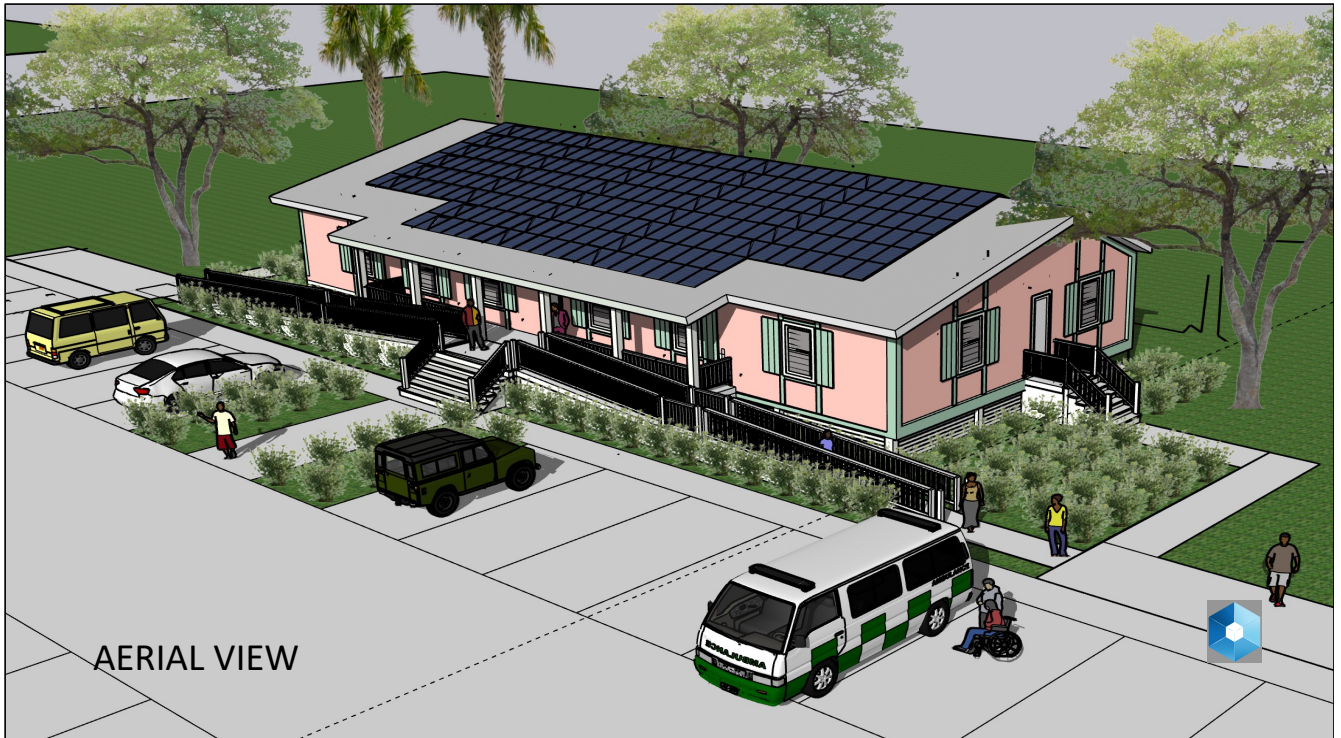


WALOMED BASIN STREET
TELEMEDICINE CENTERS

WALOMED BASIN STREET TELEMEDICINE

LEVEL 3 SURGERY HOSPITALS FOR RAPID RESPONSE CRISIS DEPLOYMENT

WBST LEVEL 3 SPECIALTY SURGERY HOSPITALS, FOR PRE-PLANNED CRISIS RESPONSE



AERIAL VIEW

WBST Level 3 Specialty Surgery Hospitals have been specially developed for **CERRA Framework**-compliant Crisis Response and Recovery Agency Pre-Positioning in a crisis prone area, prior to a Crisis, or for WBST Rapid Response, after a Crisis has developed, and with long-term Post-Crisis value. BST wishes to work with host governments to implement CERRA Programs before or after a Crisis, to enable more efficient and effective Crisis Event Response and Recovery Access.

CONCEPTUAL FLOOR PLAN



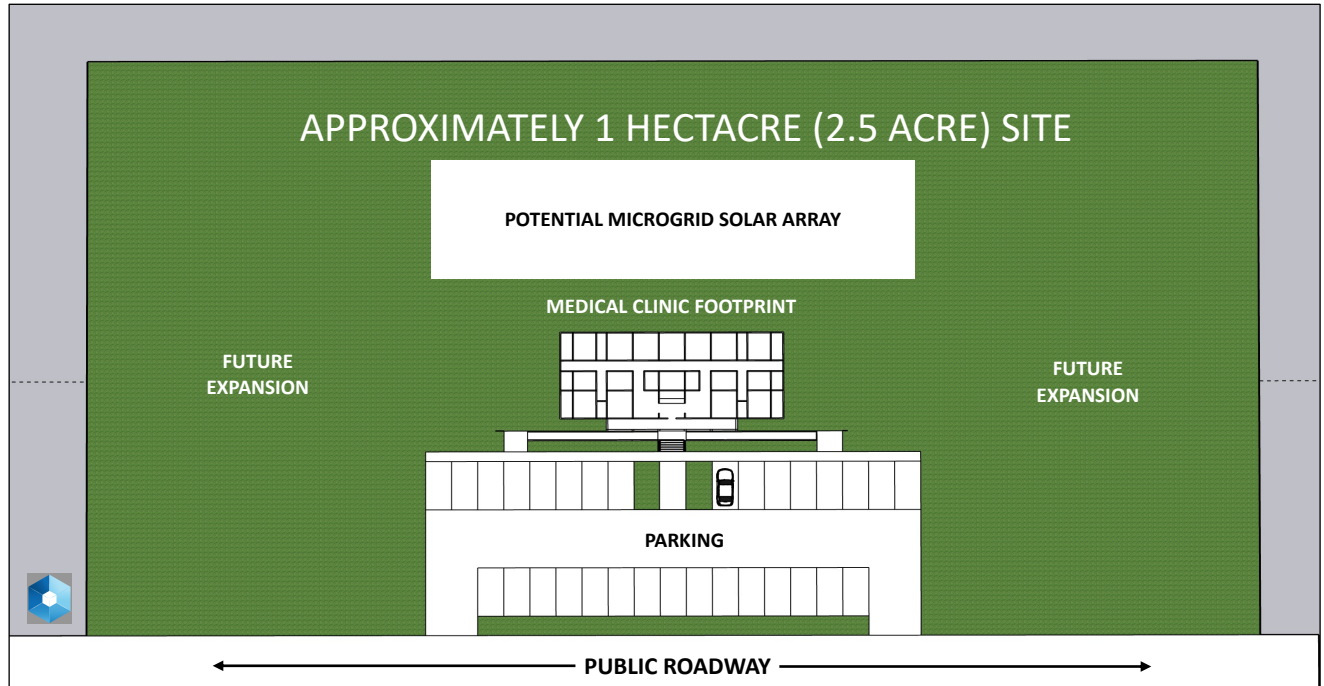


WALOMED BASIN STREET TELEMEDICINE

LEVEL 3 SURGERY HOSPITALS FOR RAPID RESPONSE CRISIS DEPLOYMENT

WBST Crisis Response Hospitals are designed to be deployed after a disaster to respond to the pressing global need for better and more accessible healthcare services, powered by highly energy efficient and highly resilient Off-the-Grid facilities and the Internet, capable of providing Telemedicine Healthcare Services that operate almost anywhere on Earth.

SITE PLAN



TELEMEDICINE CAPABILITIES: WBST Centers are designed around and incorporate integrated Telemedicine Systems, Equipment and Protocols (“Telemedicine Systems”), including Electronic Health Records, that enable WBST Centers to efficiently provide routine Primary Care services to patients, respond to Level 3 Emergency Situation with Level 3 Surgical Procedures, and pre-planned consults with Medical Consult Experts and Volunteers worldwide on complex and unusual matters and unfamiliar treatment protocols.

ENERGY EFFICIENT CENTERS: WBST Centers are pre-fabricated with high levels of insulation and air-tightness and highly energy efficient designs that are pre-fabricated, shipped to and assembled on-site using highly energy efficient air-tight components. WBST Centers are 40% more energy efficient than centers built using conventional construction methods and materials.

TRULY OFF-THE-GRID ICT, CYBERSECURITY, POTABLE WATER-GENERATING, AND SOLAR ENERGY+STORAGE SYSTEMS: For truly Off-The-Grid operations, WBST Centers are configured with Solar-Powered Low Earth Orbit Satellite ICT connections, Cyber-Secure Enterprise Browsers & Remote Cybersecurity Monitoring & Prevention Services, Potable Water Generation Systems, and Solar Roof- and Ground-Mounted Panels and Battery Energy Storage System (“BESS”) Arrays, all deployable and assembled on-site anywhere on Earth on short notice.

POWERED BY MICROGRIDS. WBST Centers utilize Microgrids and Microgrid Controllers to outsource management of ICT, SOLAR+STORAGE Systems, enhance these Systems’ resilience,



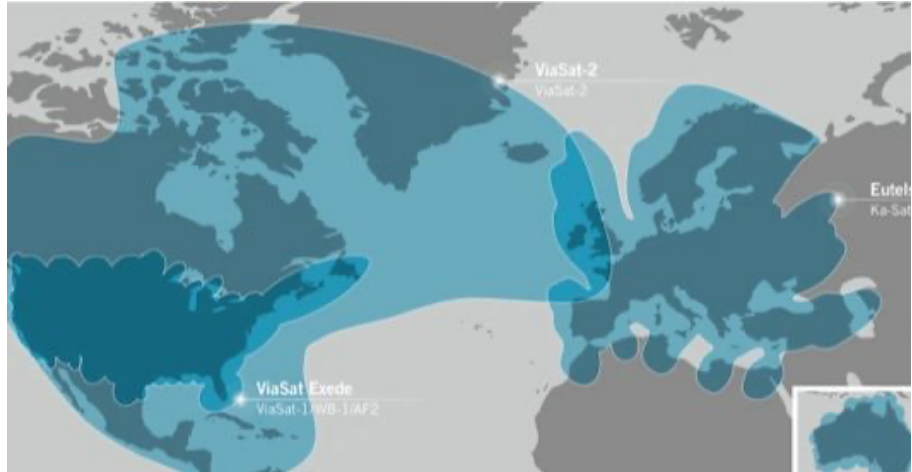
WALOMED BASIN STREET TELEMEDICINE

LEVEL 3 SURGERY HOSPITALS FOR RAPID RESPONSE CRISIS DEPLOYMENT

remotely manage energy supply and usage by Multiple Centers and their neighbors for Community Security, and (where available) access wholesale energy markets.

Microgrids and Microgrid Controllers are particularly useful for owners that deploy multiple WBST Centers and/or large scale Solar/BESS systems for energy sharing and access to wholesale energy markets.

POWERED BY LOW EARTH ORBIT (LEO) SATELLITES, AND SITE SECURITY, COMMUNITY SECURITY AND OTHER ICT SYSTEMS. WBST Centers utilize LEO Satellites and ICT Systems to securely transport, store and process patient data in compliance with data privacy requirements, maintain highly-resilient



IP-based communications even when the Grid is down, to provide Site Security and Community Security through Community Camera Systems, and to bridge the Digital Divide in the community served by each WBST Center.

CYBERSECURED CENTERS. WBST Centers are equipped to comply with the [NIST Cybersecurity Framework](#), the globally authoritative cybersecurity model, using new Secure Enterprise Browser Technology and manned Remote Cybersecurity Monitoring and Prevention services.

INTERNATIONAL BUILDING CODE COMPLIANT. WBST Centers comply with the [International Building Code](#) (“IBC”), which “establishes minimum requirements for building systems using prescriptive and performance-related provisions. It is founded on broad-based principles that make possible the use of new materials and new building designs.”

LEVEL 3 CENTERS. WBST Level 3 Hospitals are configured to provide healthcare services as Level 3 (4,000 sq ft.) Centers and also can serve as Cooling Centers in times of sustained Dangerous Heat, see [Washington Post](#), [WHERE HEAT WORSENS HUNGER](#) (Oct. 12, 2023).

With pre-fabricated structures and pre-configured equipment sets for standards-based service delivery and operation, Centers may be highly-individualized through Owner decisions on Medical Equipment and Devices, Surface Design, Finishes, Signage, and Site Plan options. Center site placement will vary with local zoning requirements, terrain, foliage, and optimal solar shingle direction.

WBST Centers are designed to be deployed as stand-alone operations, as one or several Microgrid-aggregated Centers, or as an expansion of existing operations. Multiple WBST Center Clean Energy and Telemedicine Systems are managed via secure and HIPAA-compliant Internet- and Microgrid-powered services.

WALOMED BASIN STREET TELEMEDICINE

LEVEL 3 SURGERY HOSPITALS FOR RAPID RESPONSE CRISIS DEPLOYMENT

WBST TEAM MEMBERS

WBST Team Members	Title
William E. Bertrand, Ph.D.	Chief Healthcare & Health Officer
Yaye Fatou Sarr, Ph.D.	Chief Telemedicine Officer
Vladimir Laborde	CEO WBST and Project General Manager & Energy Plant and Connectivity SME
Pierre-Marie Du Meny, MD	SME, Medical Regulation & Private Sector Outreach
Dennis Kelly, Esq.	WBST EVP and Chief Administrative Officer, Cybersecurity SME
Dider Alerte	BST Vice President and SME, Project Connectivity
Steven Bingler, AIA	CEO Concordia Architects: Facility Architecture & Fabricated Building Components Protocol, Fabrication & Assembly
Exro Technologies, Inc., ATTN: Dacoda Collins	Provider, Project Battery Energy Storage Systems and Microgrid Controller and SME, Solar Generation, Storage Facilities and Microgrid

###

For Additional Information:

Vladimir Laborde (French or English), WBST CEO, vlaborde@basinstreettech.com or 678-668-9013

Yaye Fatou Sarr, Ph.D. (French or English), WBST Telemedicine SME & Telemedicine Provider Lead, ysarr@walomed.com or 504-313-4085

Dennis Kelly, Esq. (English), WBST Sr. VP, dkelly@basinstreettech.com or 504-251-0240