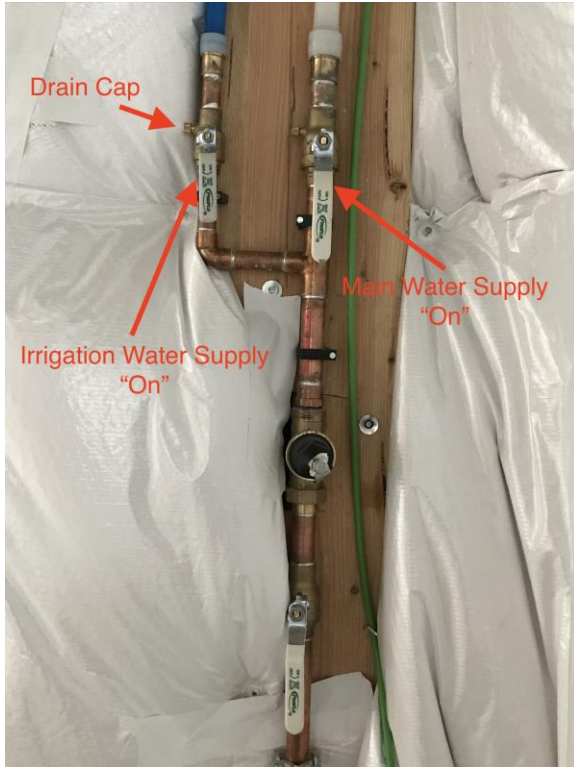
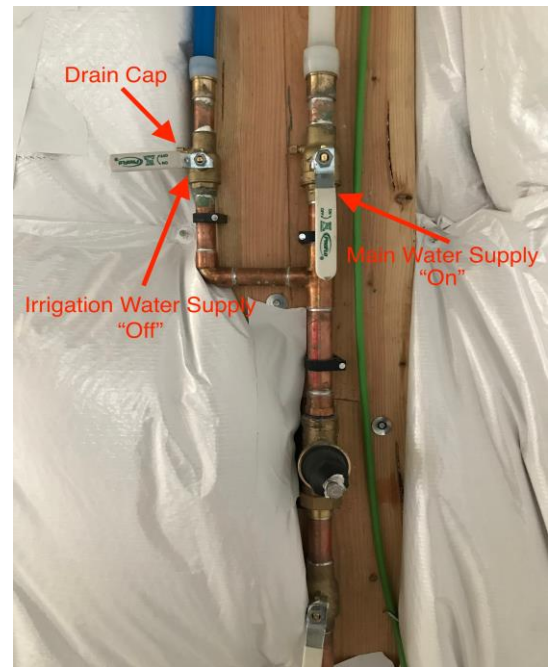


# How to turn off your Irrigation Water and drain it

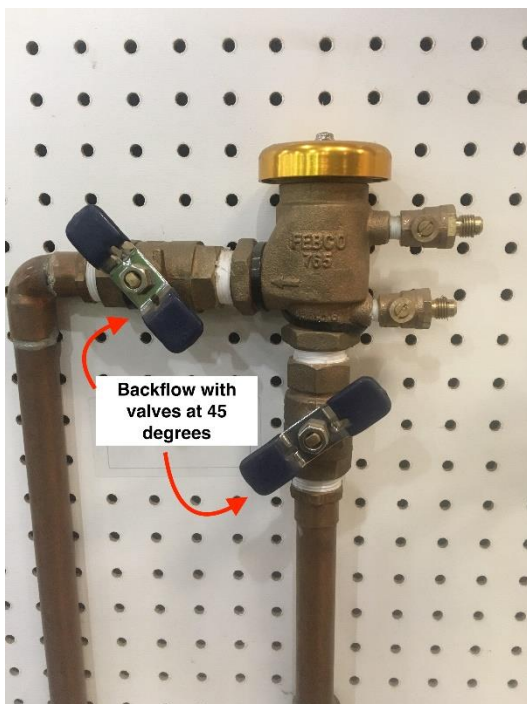
**Step 1: Locate the main irrigation shut off valve inside your house (typically located inside a closet in the home)**



**Step 2: Turn off the irrigation main**



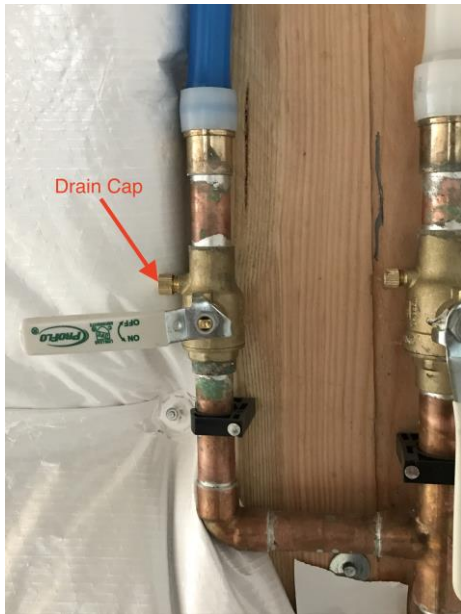
**Step 3: Locate the backflow outside of the house. Turn both ball valves on the backflow to the "45" position.**



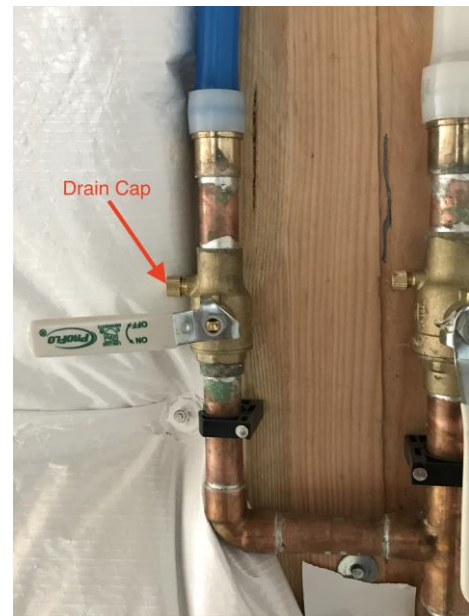
**Step 4: Locate the drain cap and untwist till water starts to drip.**



**Step 5: Locate drain cap inside home and remove, draining the water. Use a cup or bucket to catch the water**



**Step 6: Once drained replace the drain cap. Finger tight only.**



**Step 7: After turning off the main irrigation valve, confirm that no water is leaking from the main irrigation valve inside the home or from the drain cap inside. Leave the backflow ball valves in the "45" position. A GVR Landscape Irrigation technician will winterize the backflow, manifold and valves outside the home.**