

ODOT / Hunnell United Neighbors Briefing

July 1, 2020

Bob Townsend

ODOT Area Manager

Robert.l.townsend@odot.state.or.us

541-388-6252



An aerial photograph showing a multi-lane highway (US20) winding through a landscape. The highway is flanked by dense evergreen forests. A river flows alongside the road in some sections. In the upper left, there is a large industrial or construction site with various buildings and equipment. The overall scene depicts a transportation corridor in a natural setting.

US20 Corridor Project Status



US20 NORTH CORRIDOR – Current Project



- 2 Dual Lane Roundabouts
(Tumalo / Old Bend Redmond Intersections)
- Dual EB Lanes OB Redmond towards Cooley
with Median
- Pavement Preservation
- Bids Fall 2021 - Construction 2022

Deschutes County Contribution Appx. \$7 million

ODOT Contribution Appx. \$12 million

US20 NORTH CORRIDOR – Included in US97 Design-Build



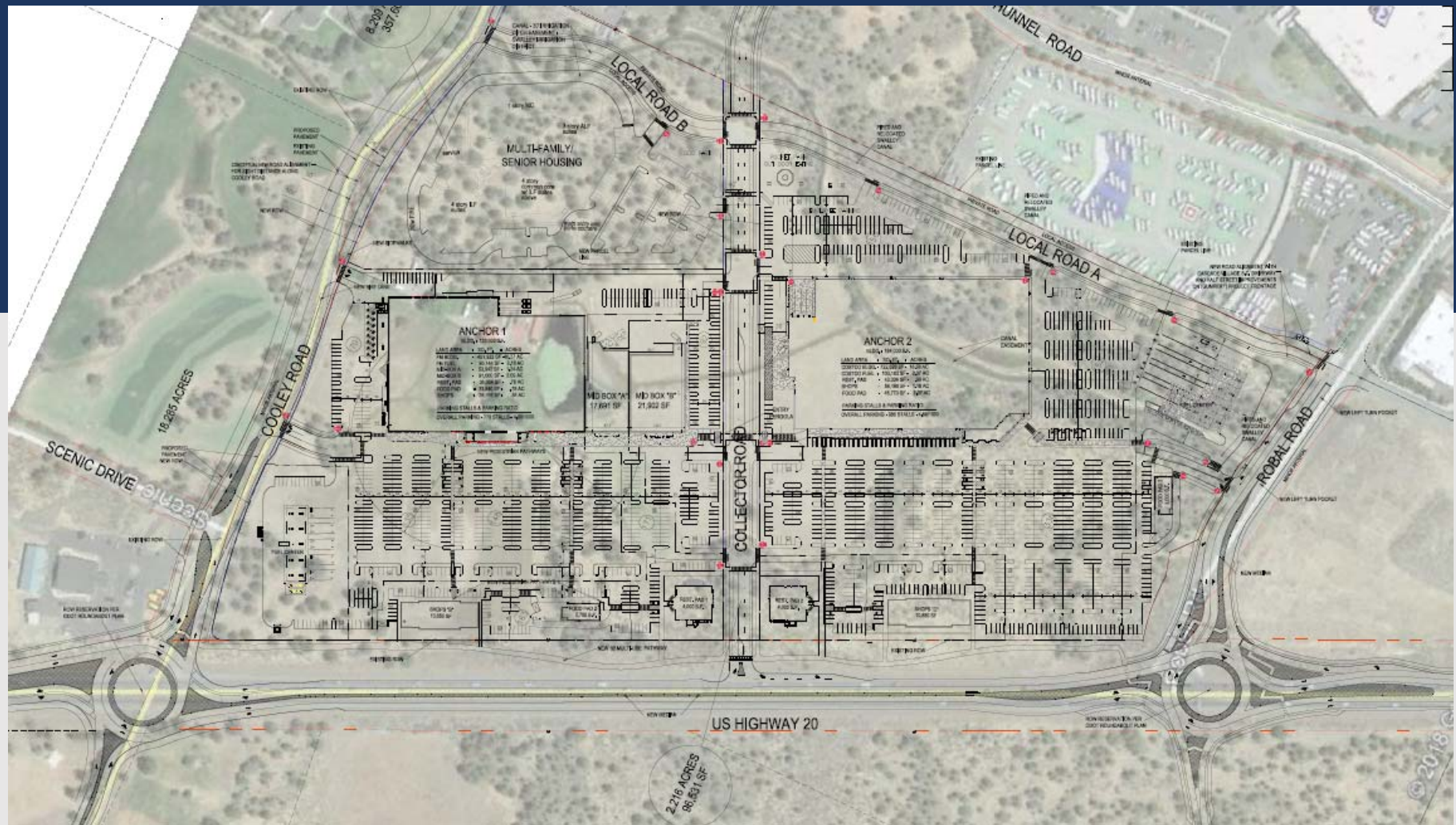
- 2 Dual Lane Roundabouts (Cooley & Robal)
- Dual EB & WB Lanes from OB to Gore Point
- Raised Median from Old Bend Redmond – Gore Point
- Pavement Preservation – Cooley to Gore / Overpass
- Construction Late 2022/23
- Bridge Deck Preservation (US20 Sisters Overpass)

Variables:

City of Bend TSP Amendments

Private Development

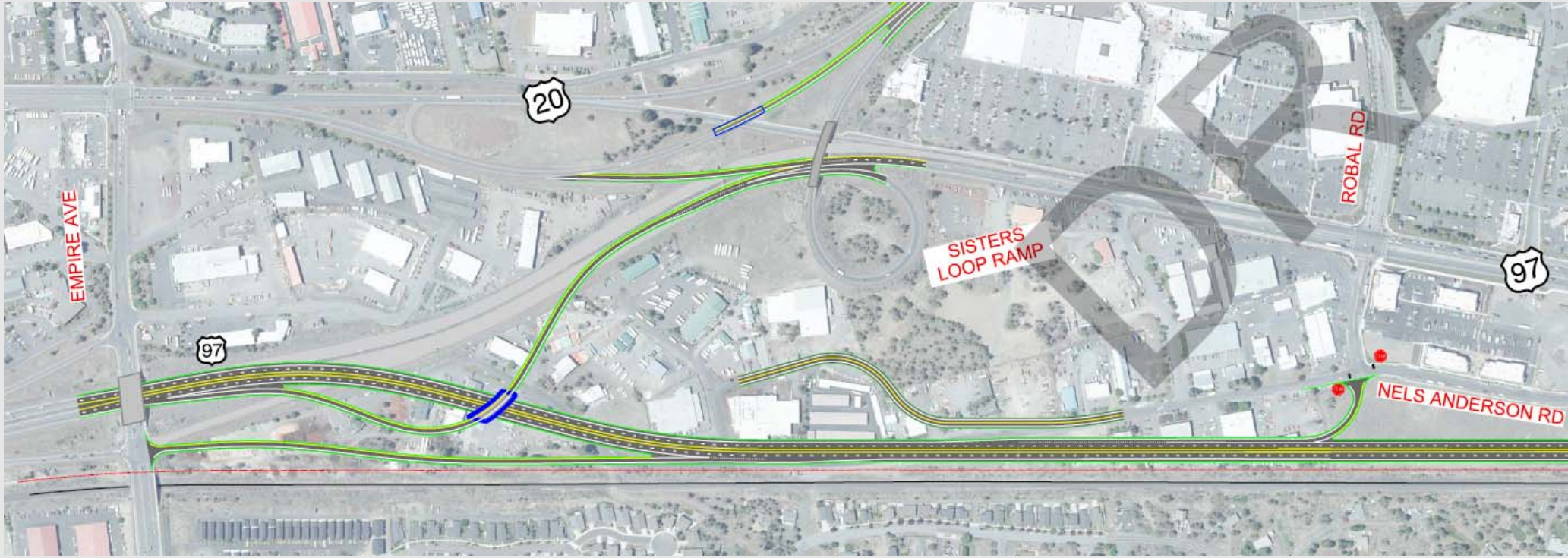
US20 CORRIDOR – PRIVATE DEVELOPMENT



US20 / US97 BEND NORTH CORRIDOR









US97 PROJECT MOVING FORWARD

- Design-Build Contract
- Award to Contractor & Consultant
Spring of 2021
- Construction to begin in Late
2022 & continue to 2024

US97 Bend North Interchange Planning Study



Hunnell United Neighbors Questions

- How does Hunnell Road fit into ODOT plans for the road system in Bend?
- What are the impacts of the Costco/Fred Meyer development on Hunnell Road?
- What does ODOT expect a collector (Hunnell Road) will accomplish other than to serve the residents of Hunnell Road?

An aerial photograph of a road intersection in a wooded area. A main road runs vertically through the center, with a side road branching off to the left. The area is filled with green trees and some buildings, including a large white warehouse-like structure in the bottom left. The text "Questions???" is overlaid in the center of the image.

Questions???