

# Seaport Neighborhood Association



- City Councilor Ed Flynn
- Patrick Sullivan – Seaport Transportation Management Association
- Lydia Polaski – Boston Office of Neighborhood Services
- Emily Soukas – WS Development

## The SNA Mission

- Establish and maintain an open line of communication among the Seaport neighborhood, government agencies, elected officials, and other neighborhoods.
- Maintain the attractiveness and welcomeness of the Seaport area as a place to live and work and for the enjoyment of the greater Boston population, while working collectively to resolve traffic, noise and/or related issues.
- Provide an open process by which all members of the Association may be made aware of the affairs of the neighborhood. Topics of interest will include but are not limited to; new government policies, zoning issues, new businesses, changes in existing businesses, Chapter 91 issues, traffic and public safety matters, public and private services, construction and renovation projects, harbor and climate issues, and uses of public parks and open spaces.

# Discussion of Seaport Traffic & Pedestrian Safety on the Pier 4 Blvd Corridor

The focus of the meeting is Pier 4 Blvd, a major corridor within Seaport.

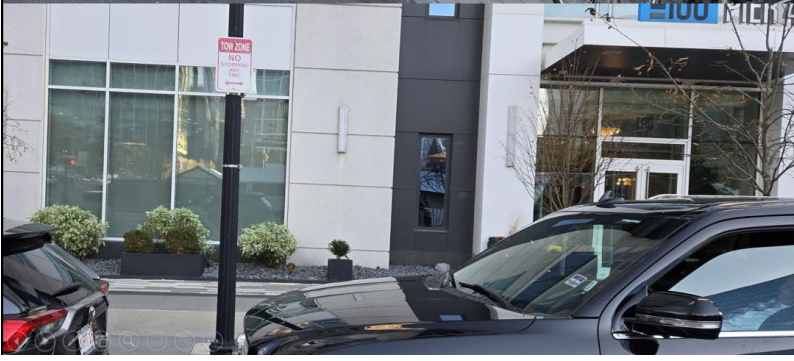
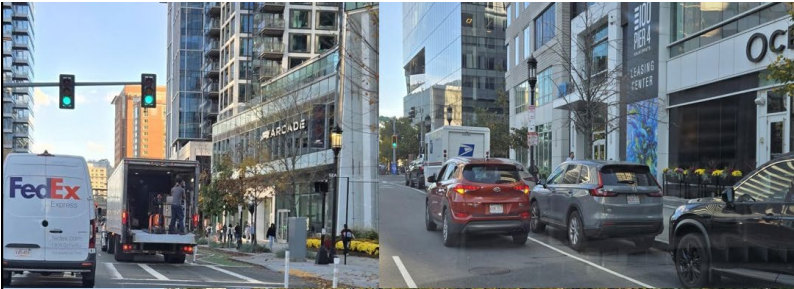


# Discussion of Seaport Traffic & Pedestrian Safety on the Pier 4 Blvd Corridor



- ❑ The portion of the South Boston Waterfront popularly known as the Seaport has seen explosive growth in business and resident buildings over the past ten years. It has been difficult for the roadways and sidewalks to keep pace.
- ❑ The Seaport Neighborhood Association’s stated goal is for our area to be ...”a welcoming place to live, work, visit and enjoy.”
- ❑ To that end, safety and accessibility have become the key challenges.

# The intersection of Seaport and Pier 4 Blvds is well traveled, congested and dangerous



# Crosswalks at Autumn Lane are unsafe when Pier 4 Blvd is blocked by illegal parking



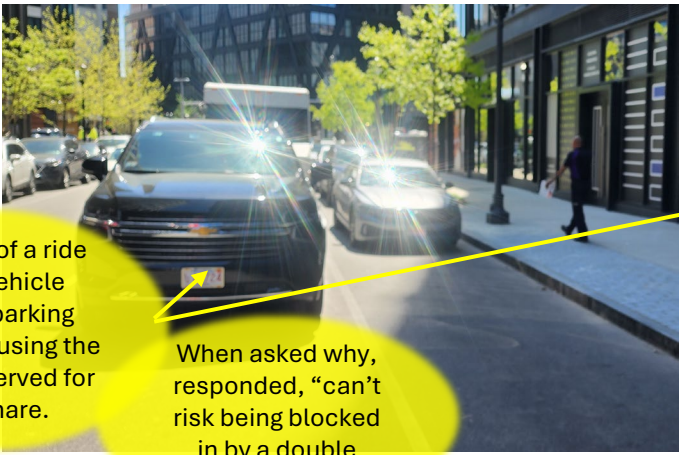
Vehicles have difficulty navigating the street due to rampant double parking.

Example of a ride share vehicle double parking instead of using the space reserved for ride share.

The Autumn Lane intersection can be very dangerous for pedestrians.

Cars speed through trying to make the light.

Double parking and deliveries eliminate sight lines between pedestrians and drivers.



When asked why, responded, "can't risk being blocked in by a double parker."



Signage and lines are inadequate to alert drivers.

# Pier 4 traffic should benefit from legalizing left turn onto Congress Street from Mass Pike



# Current Plan for pedestrian barriers at Snowport



Suggestion made to eliminate four parking spots for dedicated pickup/drop-off and deliveries.

Line control at Snowport and Cisco Brewery are crucial to leave corridor for pedestrians on sidewalk. Otherwise, they are forced into the street.

The organizers will stay flexible and quickly adjust the barrier locations and setup depending on the actual pedestrian traffic flow and input from Boston Police.

- The plan in place includes:
- 2 BPD details
  - 2 BFD details
  - 18 security staff

# Meeting Summary

## Pedestrian Safety

### Issues

- Drivers ignore crosswalks
- Drivers speed to hit green lights
- Turning drivers are distracted
- Double parking eliminates sight line for drivers and pedestrians
- Scooters ignore crosswalks, go through red lights and travel on sidewalks
- Scooters traveling wrong direction in bike lanes
- Children are at risk as they can jump into dangerous crosswalks without warning
- Crosswalks are not visible enough

### Suggestions

- ‘Pedestrian scramble’ intersections – All cross
- Raised crosswalks
- Lighted crosswalks
- Speed bumps
- Rethink electric blue-bikes
- Post clear signage for no scooters on sidewalks
- Police details at childcare pickup/dropoff locations
- ‘No turn on red’ intersections

## Traffic Flow

### Issues

- Double parking by cars, ride share, valet parking and food delivery
- Delivery trucks and vendors are in the lane of traffic
- Drivers ‘block the box’ in intersections
- Insufficient road space for growth in traffic
- 5k runs and events shut down vital roads
- Streets are gridlocked during rush hours
- Traffic and parking block garage exits

### Suggestions

- Geofencing for ride share and food delivery
- Geofencing for tour busses
- ‘Don’t block box’ signage
- Parking and traffic law enforcement
- Pause new road changes while unified plan is developed for all travelers
- Advance notice of road work and road closures
- Traffic flow cameras

## Law Enforcement

### Issues

- Need greater enforcement on:
  - Double parking
  - Speeding
  - Vendors
  - Scooters
  - Loud cars and motorcycles
- Does BPD have officers dedicated to the Seaport?
- Is there daily parking enforcement?

### Suggestions

- Increased enforcement of traffic laws
- More frequent ticketing of illegal parking
- Police/traffic enforcement presence to move double parkers, deliveries and vendors
- Buildings provide pickup and drop-off spaces as well as internal delivery areas
- The question was asked of how to push for more police funding

### SNA and Seaport TMA next steps

- Walk the Seaport at rush hour with Councilor Flynn , City officials and Boston Transportation Department
- Develop outline of feasible solutions. Prioritize the solutions. What has been successful in Boston and other cities?
- Determine the best way of pushing the solutions forward.