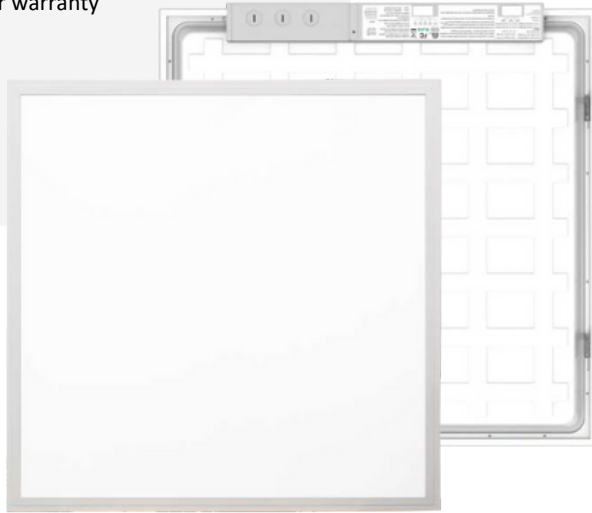


# BACKLIT PANEL SERIES

## Features

- Minimal fixture depth ideal for shallow plenum
- Simple switch to adjust lumens and CCT on site as desired
- Tamper proof cover enables DLC rebates at all wattage levels
- 2', 4', 8' sizes available
- Continuous row flex accessory enables continuous runs with a single feed point
- 5 year warranty



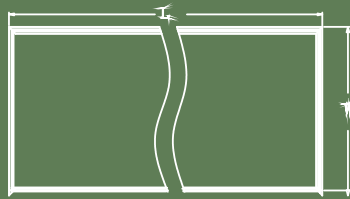
Integrated recessed mounted panel light



Integrated surface mounted panel light



## Dimension



ModelNo.	L	W	H	H1
LT-0606	603mm(23.7")	603mm(23.7")	28mm(1.1")	45mm(1.7")
LT-1203	1213mm(47.7")	303mm(11.9")	28mm(1.1")	45mm(1.7")
LT-1206	1213mm(47.7")	603mm(23.7")	28mm(1.1")	45mm(1.7")

## Specification/Product Parameters

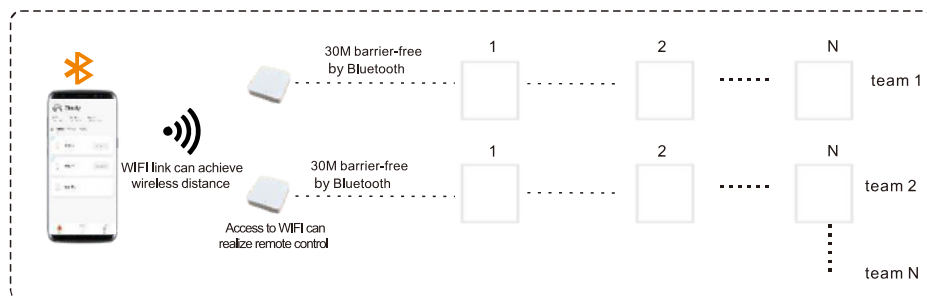
- **Input voltage:** 100~277 VAC or 100-347 VAC
- **Power:** 25W~70W
- **Frequency:** 50/60Hz
- **Lumen Efficacy:** 110 or 150LM/W
- **Power factor:** > 0.9
- **Beam angle:** 120°
- **THD:** < 18%
- **Lifespan :** 50000H
- **Operating temperature:** -25°~+45°

## Ordering Guide

Product Code	Power Voltage	Function Type	CCT	Efficiency	LED Source	CRI	PF	Beam Angle	Certification	DLC Code
EGT 1203-40W-HFCA-TWTC	20-25-30-36-40W tunable AC 100-347V	1x4 0-10V Dim	300K-4100K-5000K tunable	130LM/W	SMD2835 LED	>82	>0.95	180	DLC ETL cETL FCC CE ROHS	PWLWT0HB
EGT 0606-40W-HDCA-TWTC	20-25-30-36-40W tunable AC 100-347V	2x2 0-10V Dim	300K-4100K-5000K tunable	130LM/W	SMD2835 LED	>82	>0.95	180	DLC ETL cETL FCC CE ROHS	PZRZCF3T
EGT 1206 -50W-HDCA-TWTC	25-30-35-40-50W tunable AC 100-347V	2x4 0-10V Dim	300K-4100K-5000K tunable	130LM/W	SMD2835 LED	>82	>0.95	180	DLC ETL cETL FCC CE ROHS	PH13VFTI

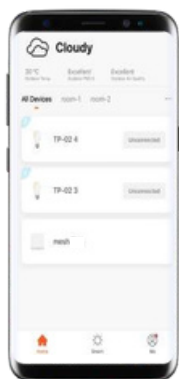
## Smart APP control

Use the world's leading smart wireless control system - TUYA smart, via Bluetooth Mesh/Zigbee communication to manage light fixture by APP(Android and IOS), include dimming, CCT adjusting, timing, ON & OFF etc.



**APP can control multiple sets of lamps through the link gateway, and the number is not limited**

- The operating signal is more stable, which can avoid signal loss when the phone is docked with too many lamps.
- Use the gateway and connect to WIFI to realize the remote control of lamps by mobile phone



## Emergency

1. Full 10w backup power over 90minutes discharge time.
2. Lithium iron phosphate(LiFePO4) battery, high safety performance.
3. Height <24mm, suitable for application with compact room as well.
4. Remote control test, no need for test switch wiring, easy operation save wiring cost and maintain cost. Refer to Figure 1
5. Connect to AC input end directly, easy wiring.
6. Good compatibility, work with all 0-10V dim LED products(<70w).

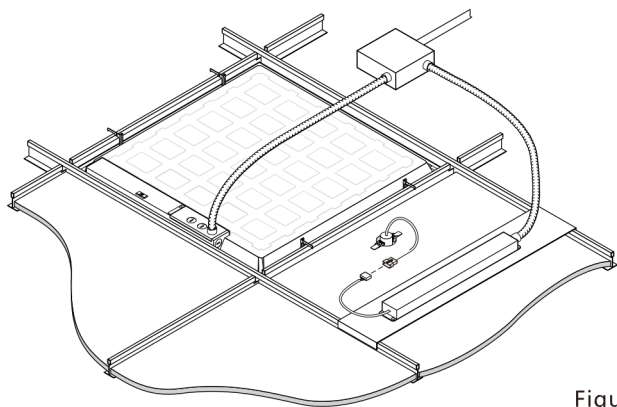
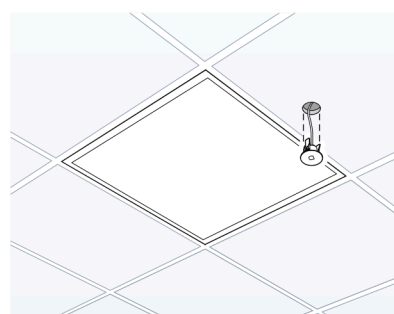


Figure 1

Please refer the detailed installation instruction



Remote controller diagram

Figure 2

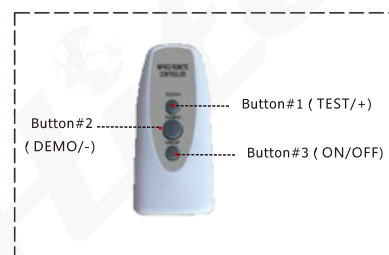
## Remote control

- Wireless IR Remote Control Instructions(Picture 2)

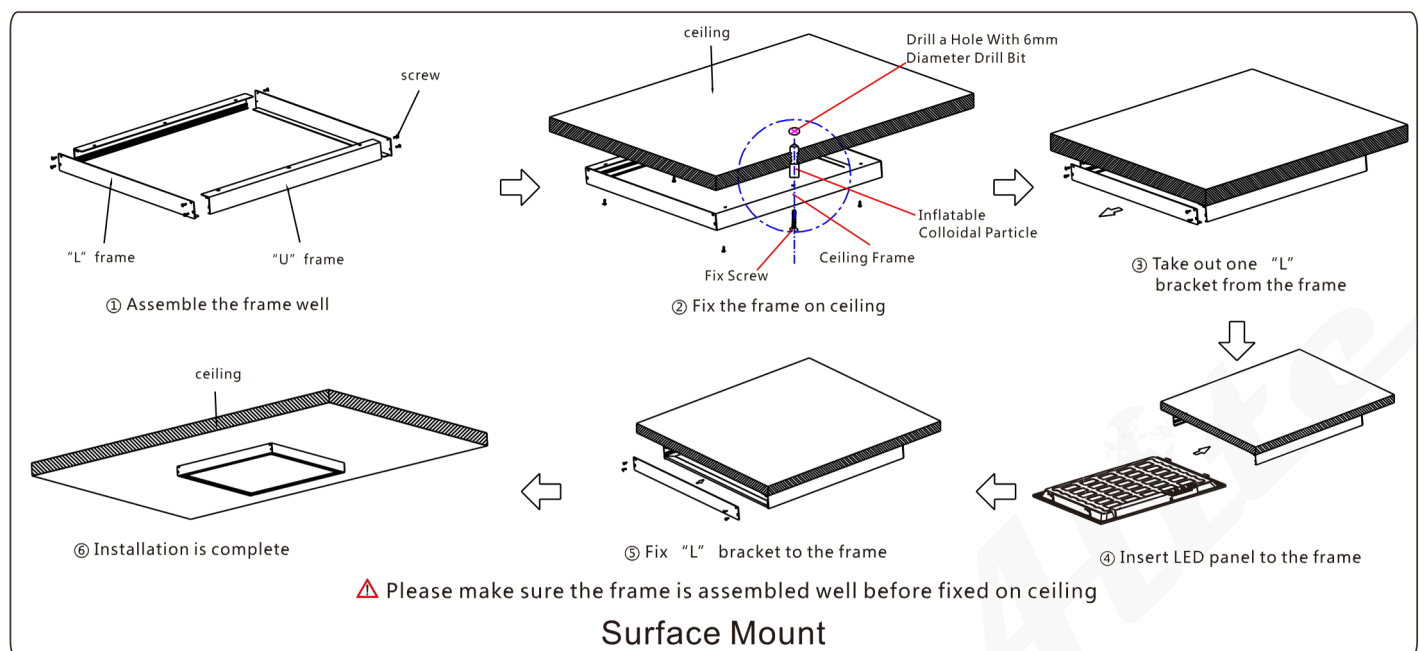
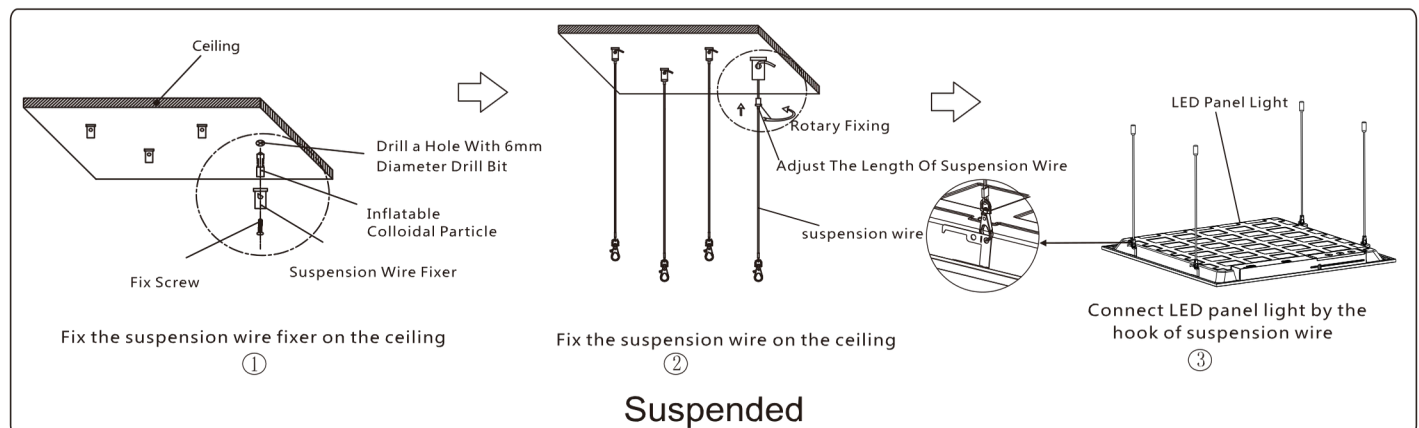
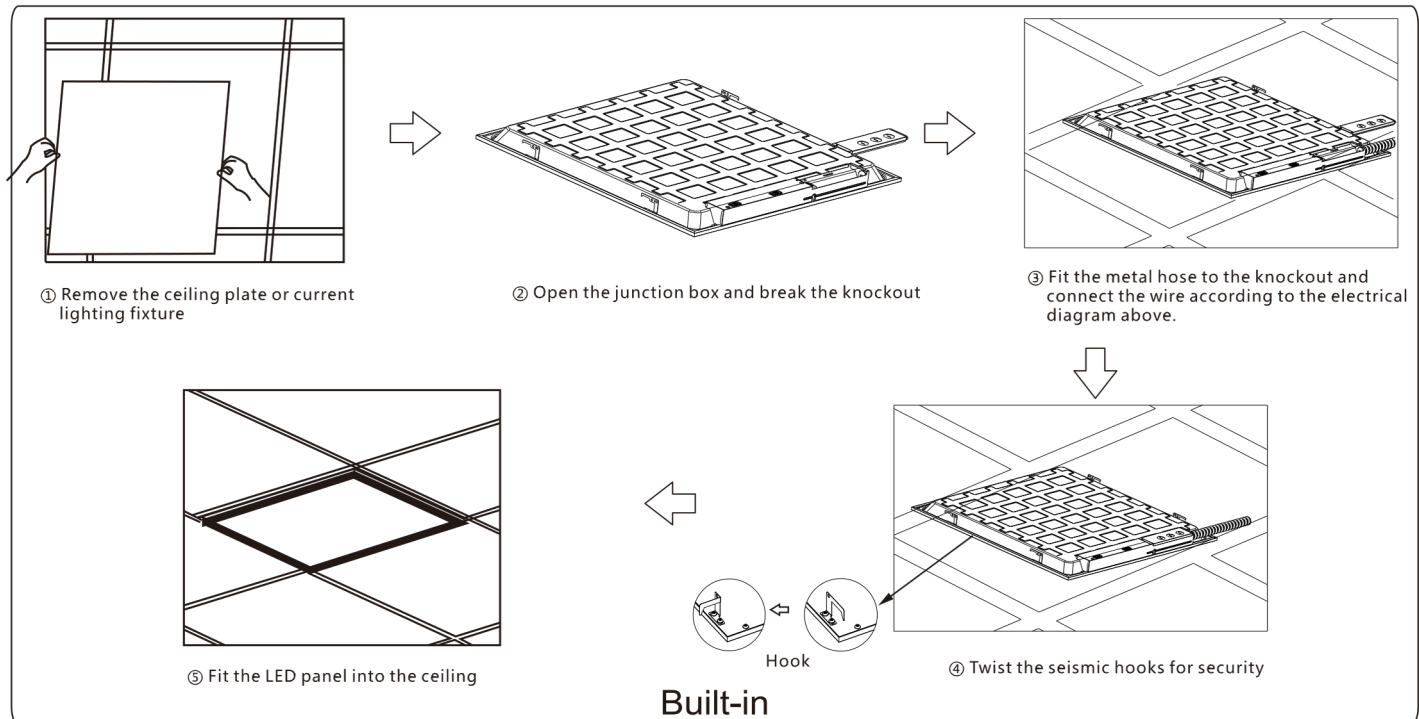
Button#1:TEST/+ Press it ,the light fixture will become emergency state for 3 seconds and the indicator light turns Red. )

Button#2: DEMO/- Press it and the ON/OFF button on normal working status, will start Emergency DEMO function. Press it and the ON/OFF button again, will close the Emergency DEMO function. Standard setting of this function is closed.)

Button#3: ON/OFF Press it for 3s on normal working status, the indicator light turns Red and keep flash, will start the every three months automatic discharge function. And Press it for 3s again, the indicator light turns Red and flash once, will close the every three months automatic discharge function; Standard setting of this function is closed)



## Installation instructions

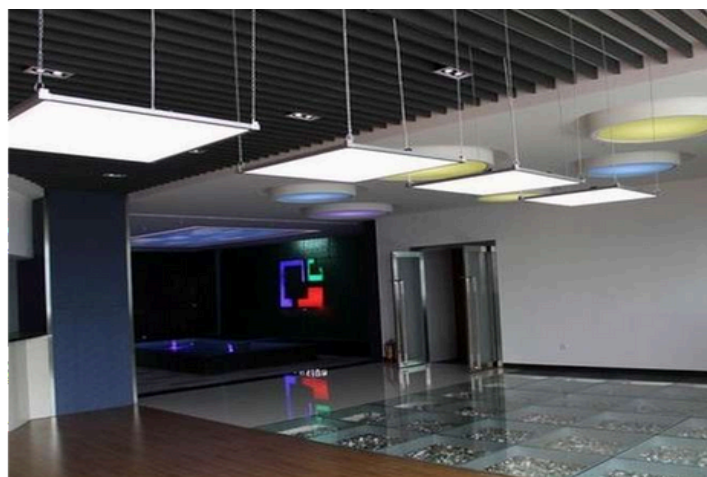
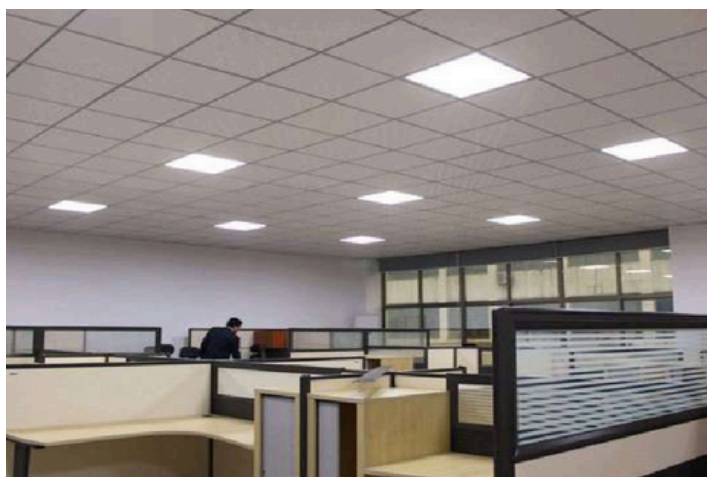


## Product application

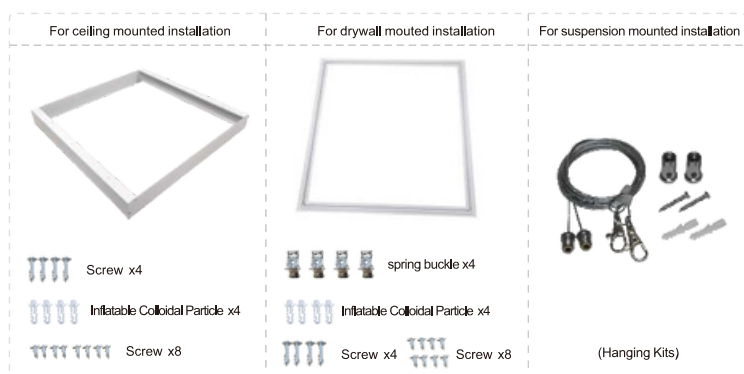
Application for most indoor area for Commercial Lighting, residential lighting and Industrial lighting, etc.

### Warning and caution:

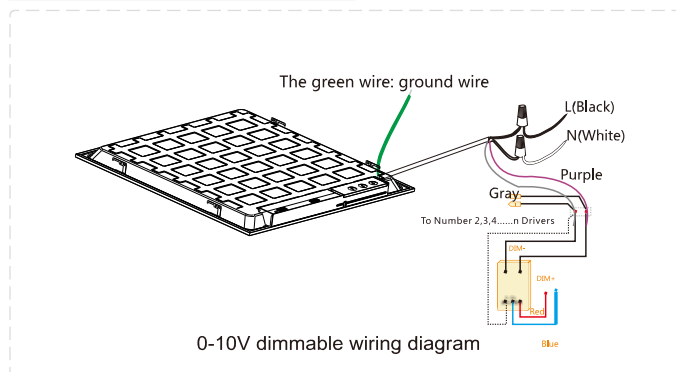
Don't use in completely enclosed fixture and damp area.



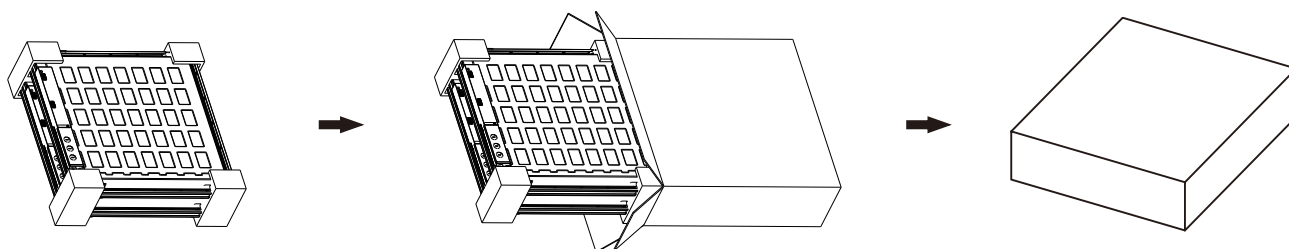
## Parts information



## Mode of connection



## Packaging



Model No.	Net Weight	Qty(carton)	Gross Weight/Carton	Container (40HQ)	Carton Size
LT-0606		4pcs		3248pcs	L635*W215*H640mm L25**W8.5**H25"
LT-1203		4pcs		3316pcs	L1245*W215*H343mm L49**W8.5**H13.5"
LT-1206		4pcs		1632pcs	L1245*W215*H640mm L49**W8.5**H25"

NO.	Packing Contents
①	LED Panel Light
②	Hanging Kits (optional)
③	Instructions manual