

2856 Cloverdale Court

Palmdale, CA 93551

Offered at
\$425,000



Single Family Home

3 Bedrooms

2 Full Bathrooms

1 Half Bathroom

1 Unit

Interior: 1,388 sqft

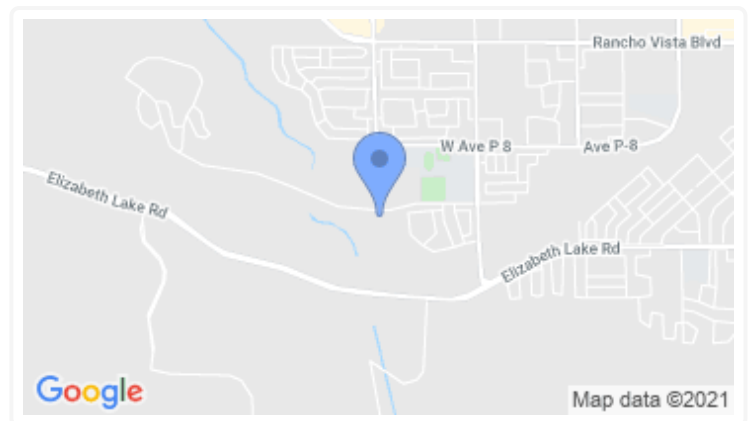
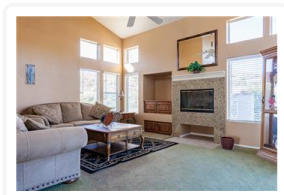
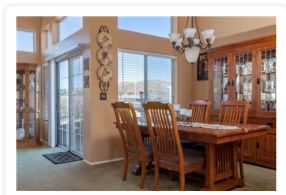
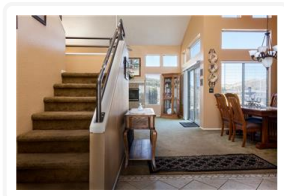
Lot: 9,874 sqft

Year Built: 1992

MLS #: 21001481

Stylish West Palmdale Home For Sale

A beautiful home at the top of the cul-de-sac features a Mediterranean-inspired exterior complete with a front balcony and contemporary styling inside. Sunlight The living room is made cozy with a tiled fireplace and a sliding glass door beckons with a lovely backyard view. The cook will love the kitchen with its stainless steel appliances, granite counters and tiled backsplash and floor. An elegant staircase leads to a landing that flows onto the front balcony. Down the hall, the master bedroom with large closets and private bath opens onto a rear balcony with striking views.



For more information contact:

Jared Erfle (DRE # 01864593)

Select Service Realty

Phone: (661) 272-1113

homes@ssrav.com

