

The background features abstract, overlapping green geometric shapes in various shades of green, creating a modern and dynamic feel. The shapes are primarily located on the left and right sides of the page, framing the central text.

# Allen Park Play Equipment

Playcraft Systems

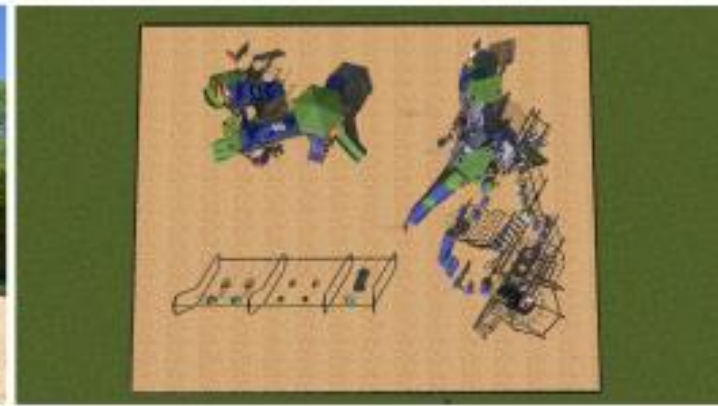
Updated November 2024

# Design Changes

- ▶ Due to substantial increases in the prior quotes from Play Creation and Buell Recreation, they were pushed out of our price range.
- ▶ We originally obtained a quote from Playcraft Systems. Their cost in the original bid was ~\$160,000. The subcommittee went back to them and asked what they could do with another \$80,000.
- ▶ The swings will be relocated to the central play area where the existing equipment is, and an ADA swing will be included.
- ▶ The current digger footprint will be reduced, and new borders will be installed around the remaining digger.



## ALLEN PARK PLAYGROUND OPTION 4















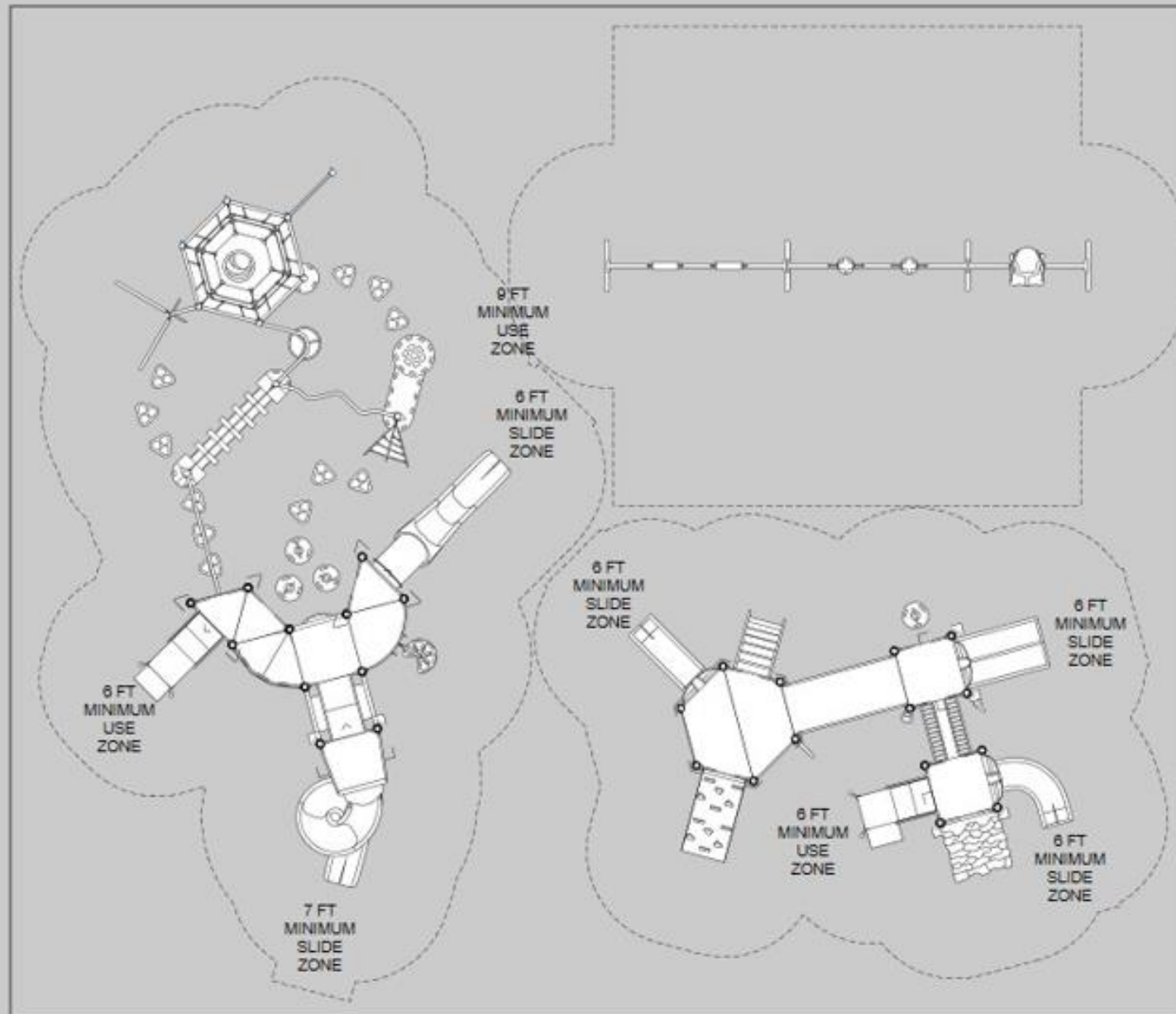














# Budget

- ▶ The cost of replacing the equipment is \$242,953.27. Construction and installation is included.
- ▶ There will be additional expenses to put sod where the existing swing sets are.
- ▶ The current tables and benches around the park will need to be replaced
- ▶ Remaining funds from the assessment will be for future play equipment maintenance and future



# Timeline

- ▶ Construction is scheduled to start in January and be completed by the end of March 2025.
- ▶ Upon completion, the final 50% payment will be required.
- ▶ A safety inspection will be completed at time of completion, and then a month after. Then annually each year moving forward.