

EZ80 Assembly from Pallet

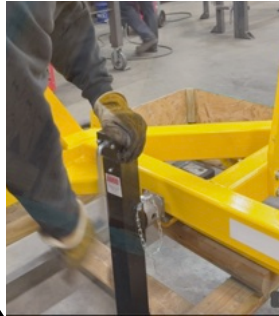
Step 1

Break down sides and remove all parts from pallet



Step 2

Remove Jack and Install Jack Adaptor. Place jack under the frame. Raise one inch.



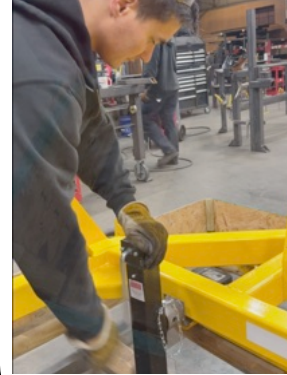
Step 3

Remove the Tongue Pin



Step 4

Raise the frame up 30 inches



Step 5

Remove T-Log



Step 6



Remove the Reel Bar



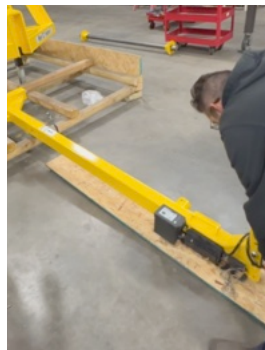
Step 7

Place Tongue directly beneath Brackets



Step 8

Use Pallet Boards to not scratch coating



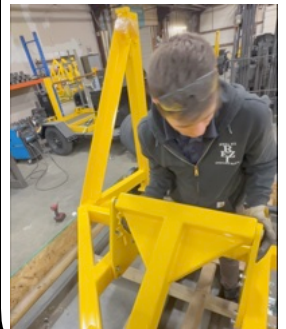
Step 9

Loosen Tongue Bracket Bolts



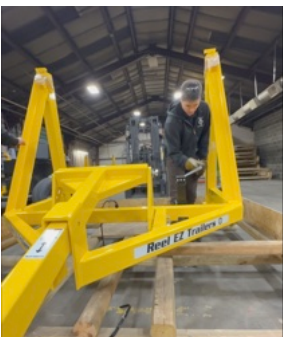
Step 10

Insert Tongue into Bracket Slots



Step 11

Lower Frame Using Trailer Jack



Step 12

Insert Pin



Step 13

Tighten the Tongue Bracket Bolts following the numerical order below and Torque each bolt to 80 foot pounds:

Driver's Side

Passenger's Side



EZ80 Assembly from Pallet

Step 14

Tighten the Tongue Bolts



Step 15

Install Fenders on with Provided Hardware



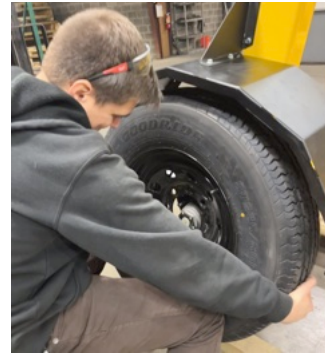
Step 16

Connect the License Plate Light Wires. Crimp and torch the connectors.



Step 17

Install the Tires. Torque lug nuts to 110 foot pounds.



Step 18

Raise the tongue and install the trailer jack.



Step 19

Install the chains.



Step 20

Plug the tongue into the frame.



Step 21

Lift trailer by the tongue and back trailer off the pallet.



Step 22

Hookup trailer to vehicle (pintle hitch required)



Step 23

Lock the wheels using the Reel Bar Lock Pins



Step 24

Pull the tongue Pin



Step 25

Back the trailer and install the reel bar

