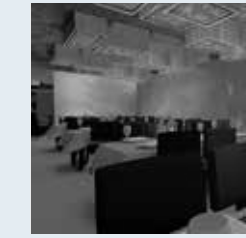


CHD  
INTERIOR ARCHITECTURE

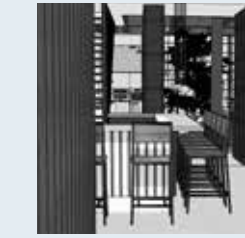
CONCEPTUAL WORK  
SELECTION  
MASTER OF  
FINE ARTS  
GRADUATE  
SCHOOL



The Be-Side  
Online Startup Office  
13 - 15

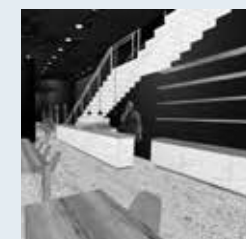


PanAsia  
Upscale Hospitality  
13 - 15



Shared Townhouse  
Communal Residence  
13 - 15

COMPUTATIONAL  
ENGINEERING



Café Construction  
Autodesk Revit  
13 - 15

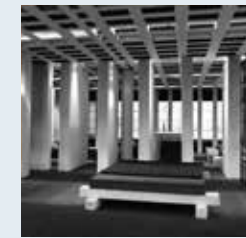


Museum Gallery  
Rhino, Revit, Ai, PS  
13 - 15



EDF Headquarters  
Rhino & V-Ray  
13 - 15

ARTISAN  
CRAFTS



Live - Work Space  
Investigating Privacy  
13 - 15

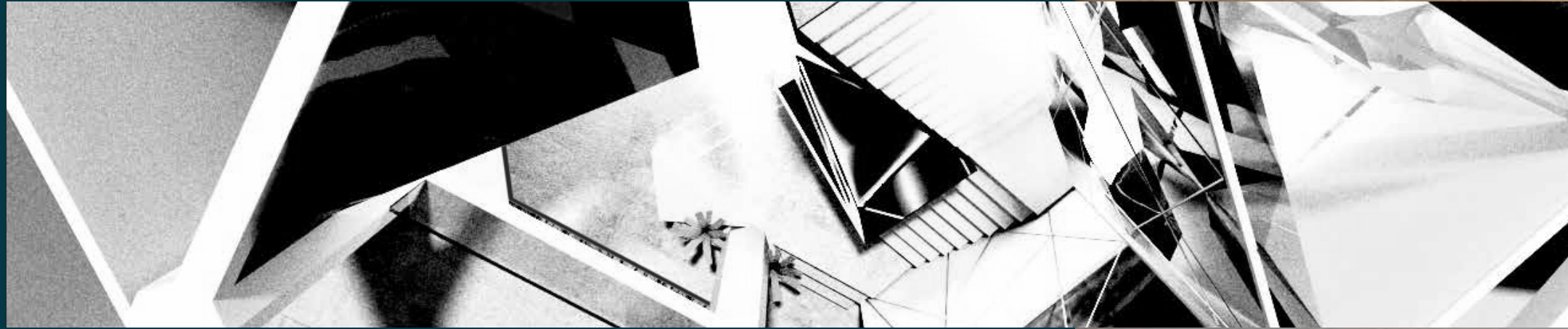


Health Center  
Holistic Integration  
13 - 15



Danish Design  
Seating Furniture  
13 - 15





# TheBeSide

Online Start-Up Office - Music Streaming Services

Music is the heart and soul of "The Be Side's" business.

Investigating the aesthetic properties of music, by visualizing sound to explore how its qualities positively influence the human senses and stimulating moods, the goal was to transfer gained insights into the build environment.

Manifesting the omnipresent acoustic flow of sounds in the interior, while honoring the existing historic structure of industry city's building complex was the driving force in this design approach.

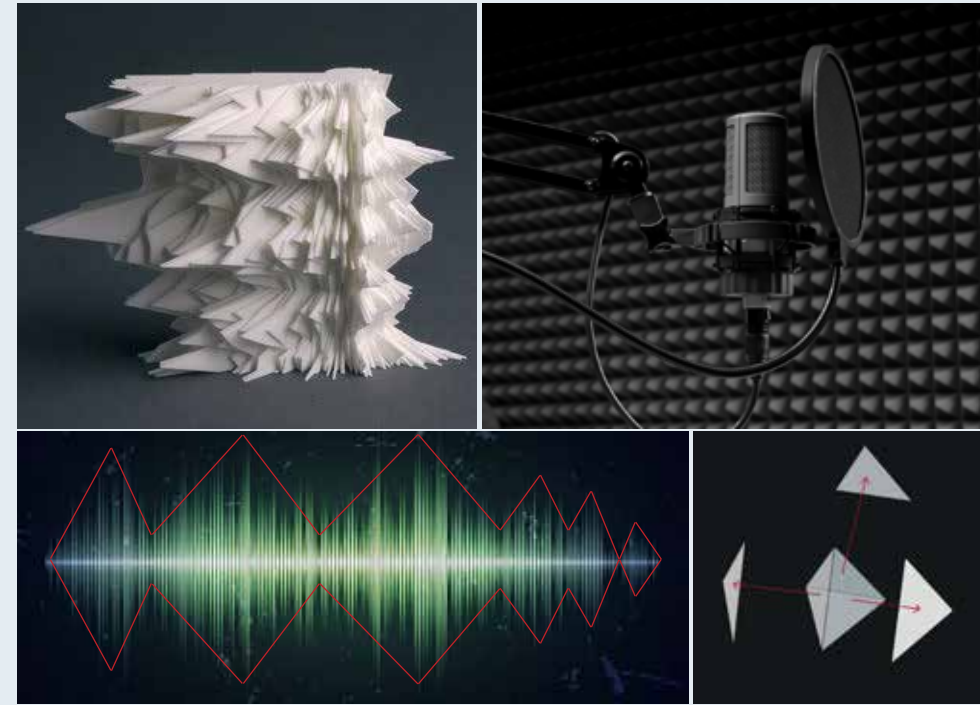


PERSPECTIVE VIEW  
Rhino 6.0 & V-Ray



TheBeSide  
Online Start-Up Office - Music Streaming Services

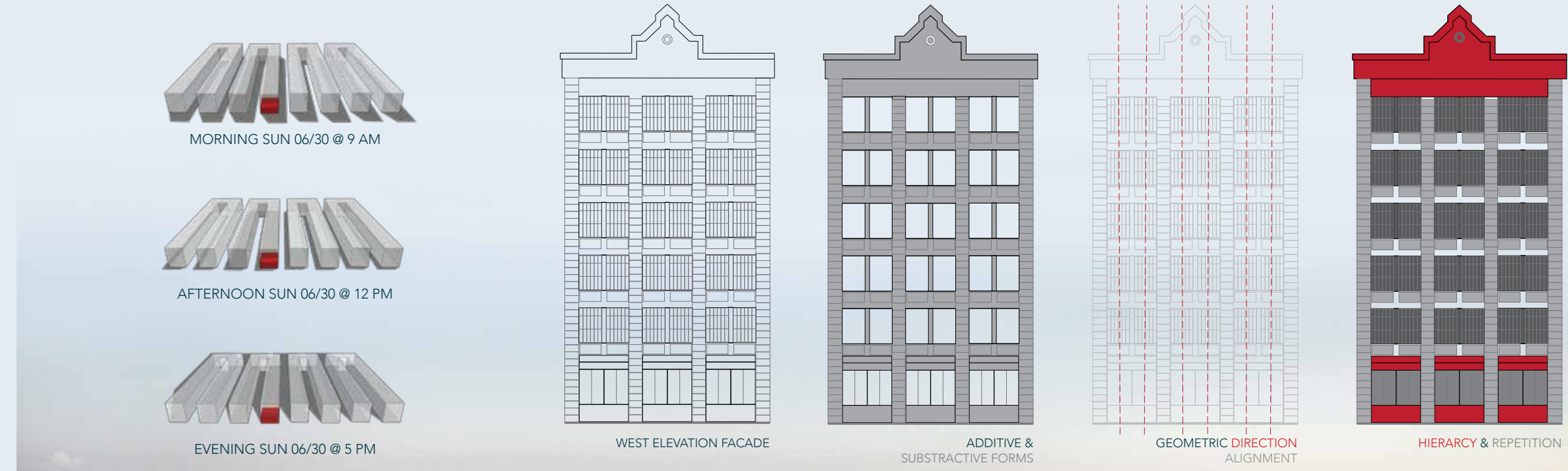
CONCEPTUAL APPROACH  
Form Finding & Color Palette Selection



EXTRACTING TRIANGLE SHAPES  
SOUND WAVE & ACOUSTIC FOAM PYRAMID

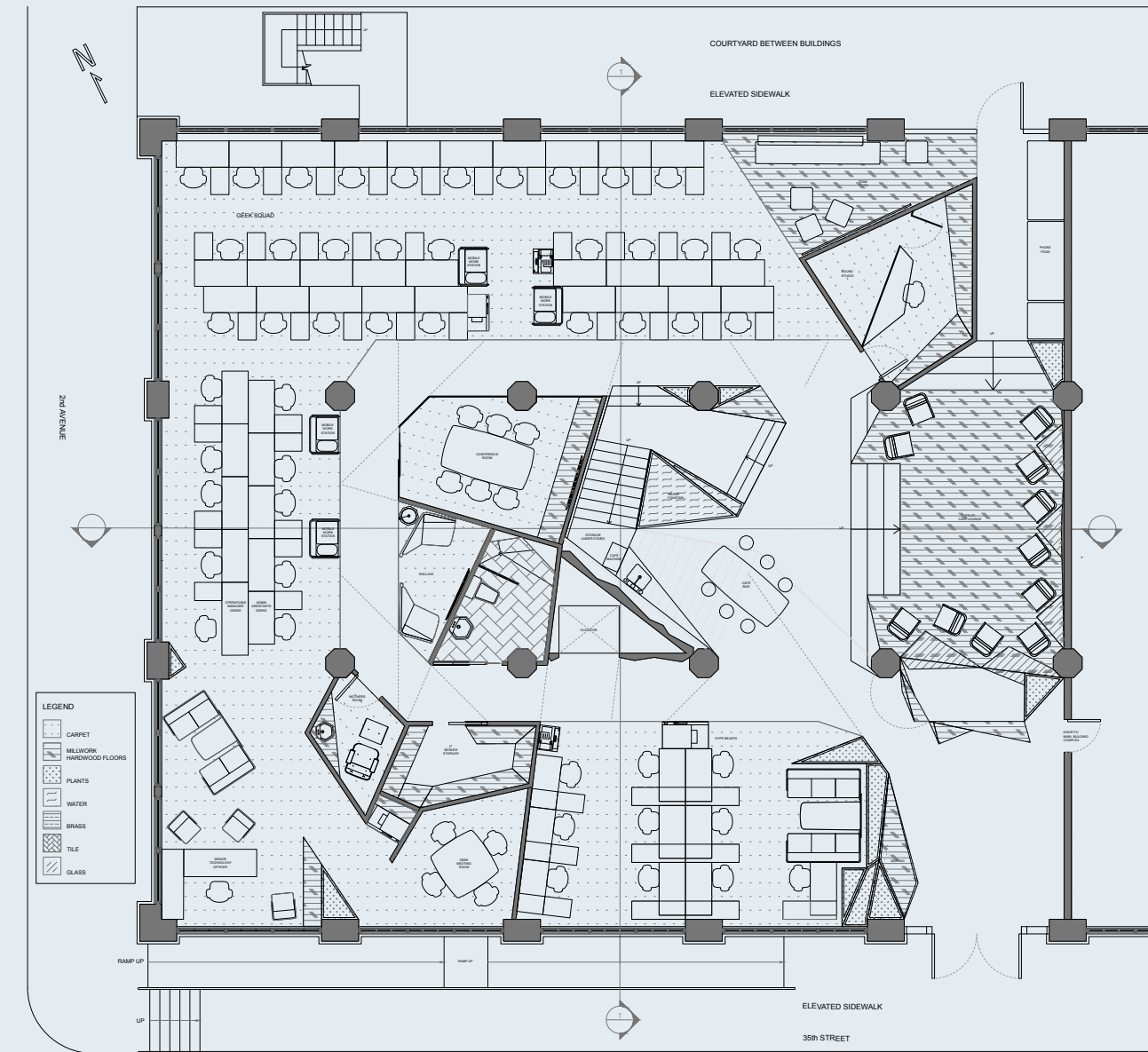


LOGO DESIGN DEVELOPMENT  
PREDOMINANTLY BRIGHT SIGNAL COLORS & DARK BACKGROUNDS



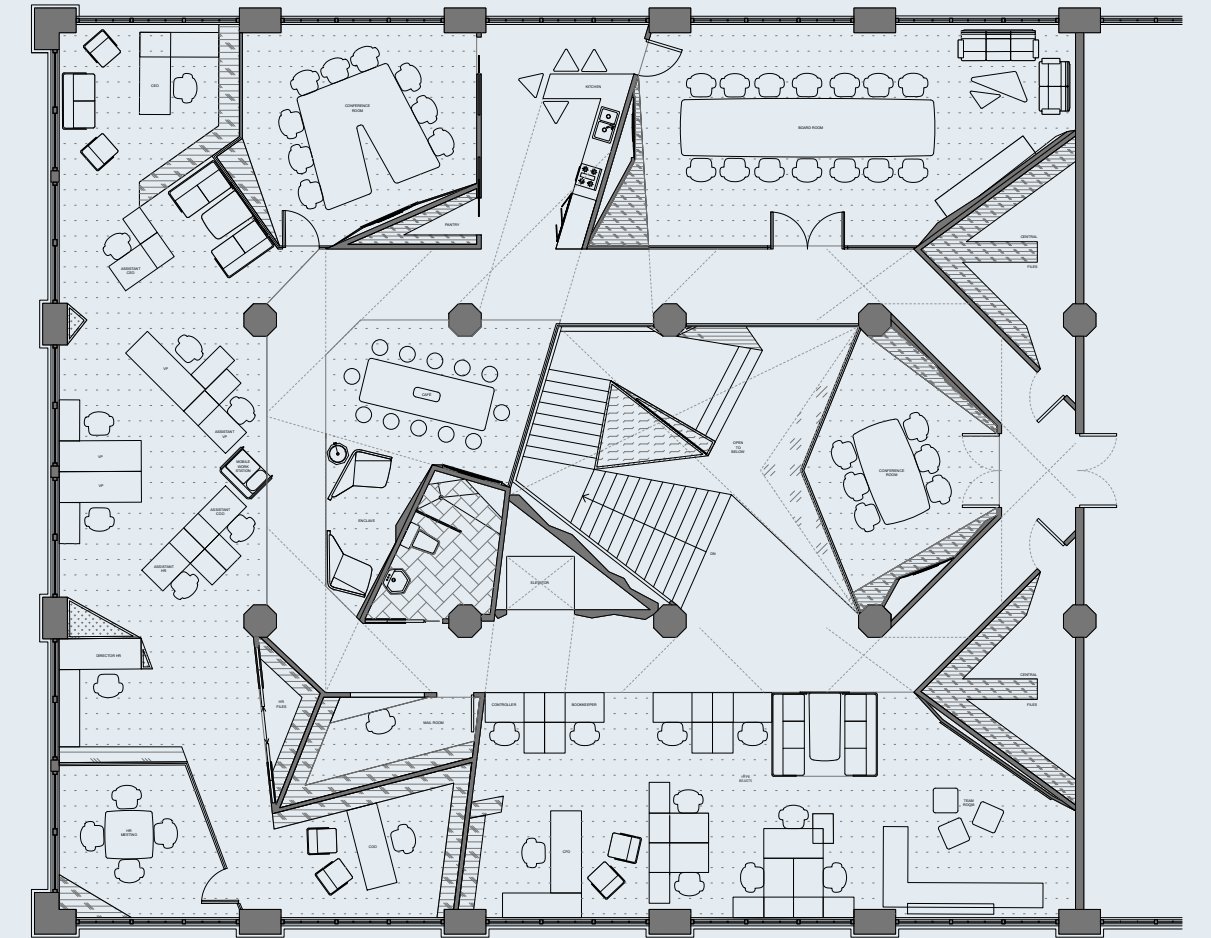


ARCHITECTURAL DRAWINGS  
Hatched Ground Floor Plan



1st floor

ARCHITECTURAL DRAWINGS  
Hatched 2nd Floor Plan



2nd floor



FURNITURE SELECTION  
EXECUTIVE OFFICE / LOUNGE SEATING / CONFERENCE



FURNITURE SELECTION  
EXECUTIVE OFFICE / CAFÉ SEATING / CONFERENCE



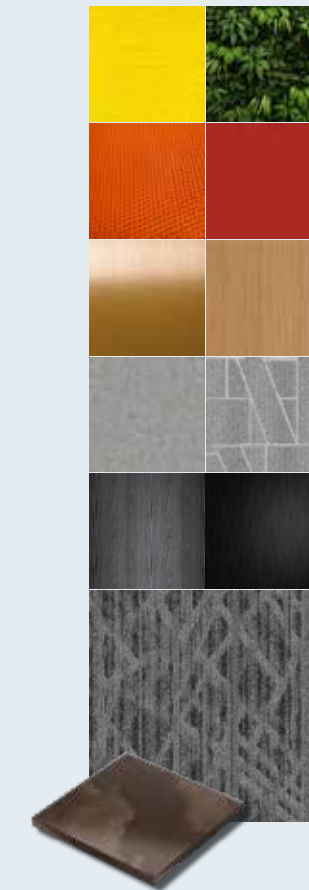
SPACE SCHEME  
Material and Color Palette



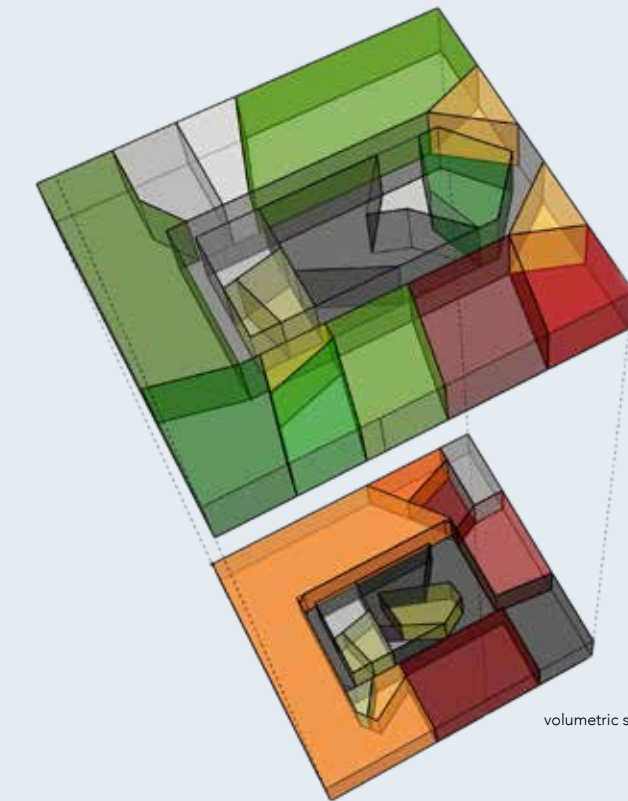
1st FLOOR  
room layout arrangement is derived from triangle shapes



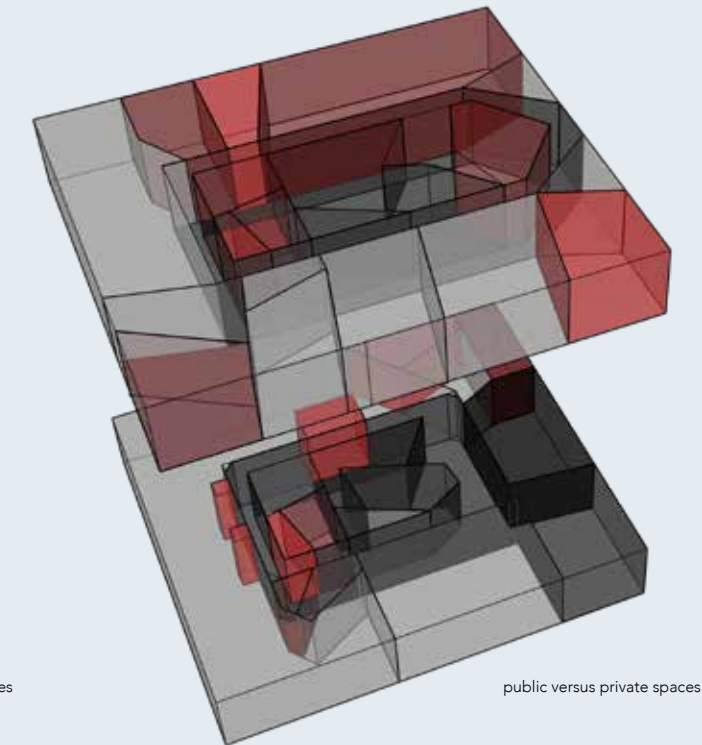
2nd FLOOR  
felt / mesh / leather / glass / oak / brass / blackened wood & metal / concrete / carpet



DIAGRAMMATIC ANALYSIS  
Volumetric Studies & Public vs. Private Spaces



volumetric studies



public versus private spaces



PHYSICAL MODEL  
Stair Investigation



PERSPECTIVE RENDERING  
Rhinoceros 6.0 & V-RAY





## PanAsia Lighting Asian Restaurant - Central Park

This business is operated by a client who owns several upscale restaurants across the city of New York. Located in the heart of Manhattan's Central Park, this fine dining establishment specializes in Pan-Asian cuisine.

The design is based on a painting which inspired the color, material and lighting concept of frozen ice in a late afternoon winter sun setting.

The program welcomes its visitors with an open bar in the entrance space which serves as a waiting area. The circulation guides guests through the seating area which progresses from communal to more private seating in three stages.

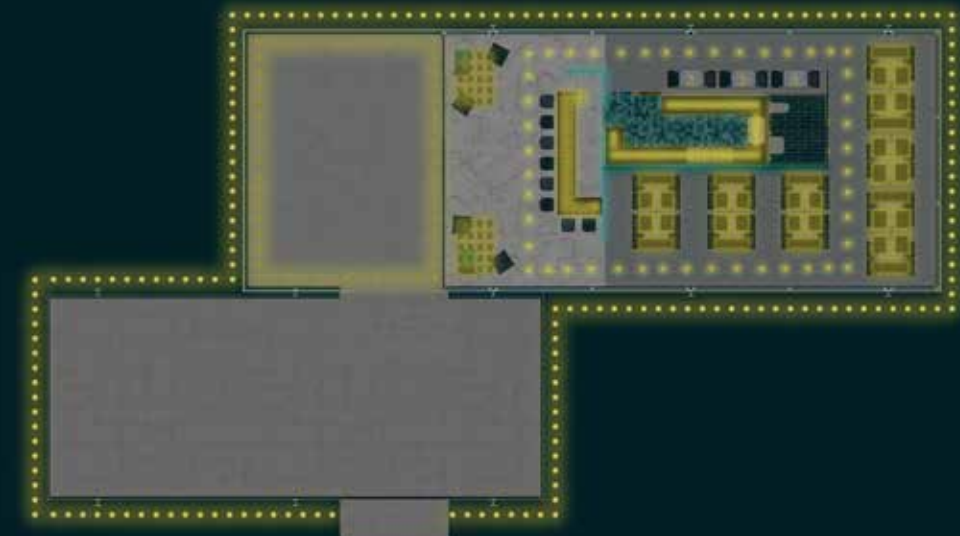
Custom design lighting boxes light areal dining spaces, while large feature walls illuminate the overall atmosphere.





## ILLUMINATION CONCEPT - DAYTIME AND NIGHTTIME LIGHTING

Lighting Placement & Radiation Angles



night light



day light

The building perimeter is surrounded by uplights sunken into the floor. The light graces the glass facade and lights the ceiling overhang from below.

While the circulation is guided by brighter pendants, seating areas are more dimly lit for privacy.

The entrance and bar area are the most public and therefore well lit. As guests move forward, the more dimly lit the atmosphere becomes.

The entrance area is the most public space. A protruding backlit wall behind the bar protects the dining area from acoustics and brighter lights.

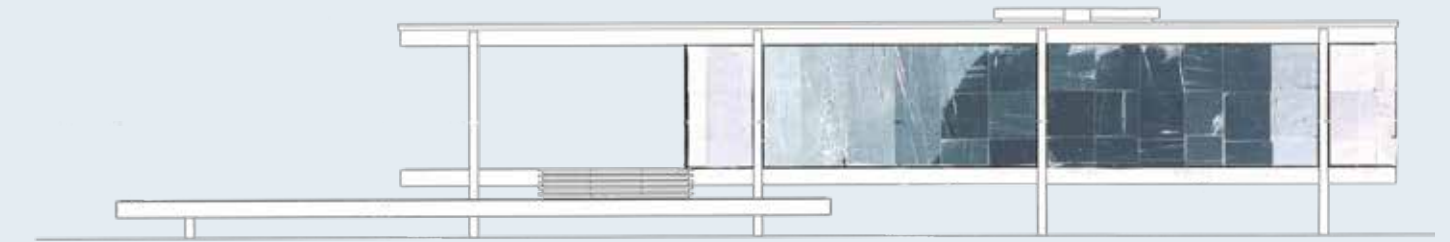
The color scheme guides visitors from brighter to darker hues as they step further into the space. While the front tables are more communal, the ones further back provide more privacy. Three cozy couples tables are tucked away from sight.

## COLOR MOOD & LIGHT INSPIRATION

Color Sequence Application



inspirational painting



1st floor



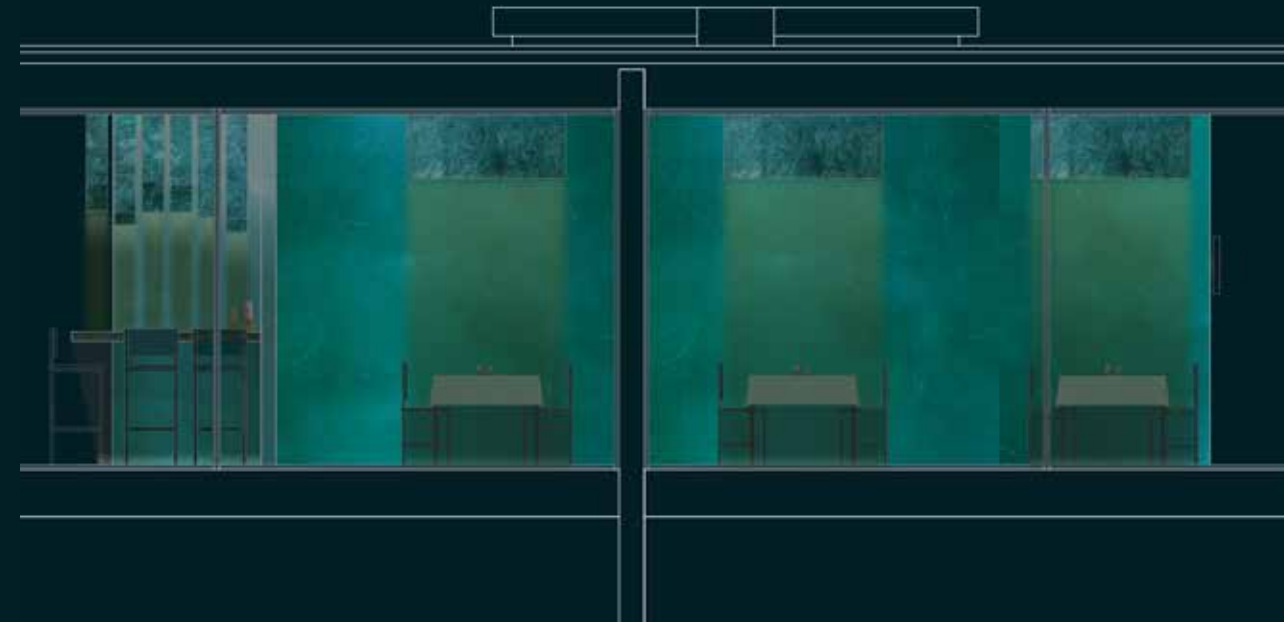
## NIGHTTIME LIGHTING

Color, Material and Light Application

The uplights support the buildings lightweightness from the outside.

Dimmer areal lights support a more private atmosphere around the dining tables.

The bar is the most lit area in the restaurant as it welcomes guests who seek to socialize or wait for their friends or business partners.



1st floor

## DAYTIME LIGHTING

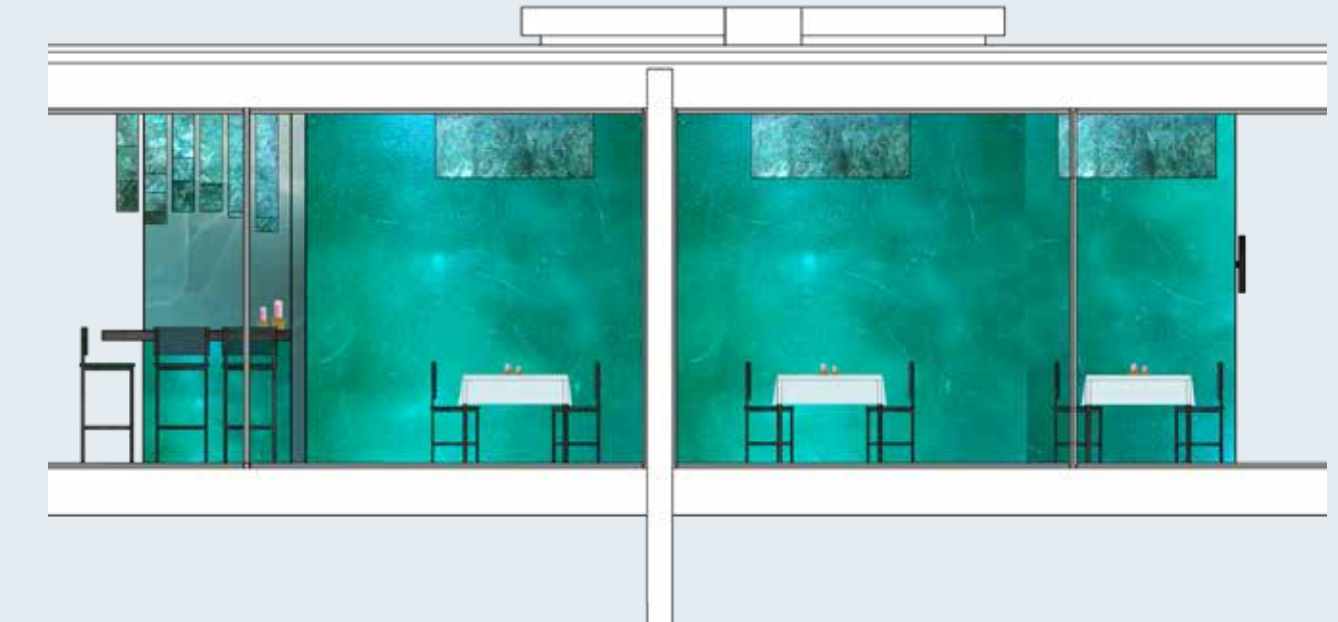
Color and Material Application

Backlit illuminated stone walls serve as dimly lit atmosphere in the dining area.

Custom light boxes, equipped with semi-translucent onyx stone diffuse light scarcely over the dining tables.

Marble floor in the bar and entrance area support a clean, cool impression, while hardwood floors in the dining area exude a warmer tone.

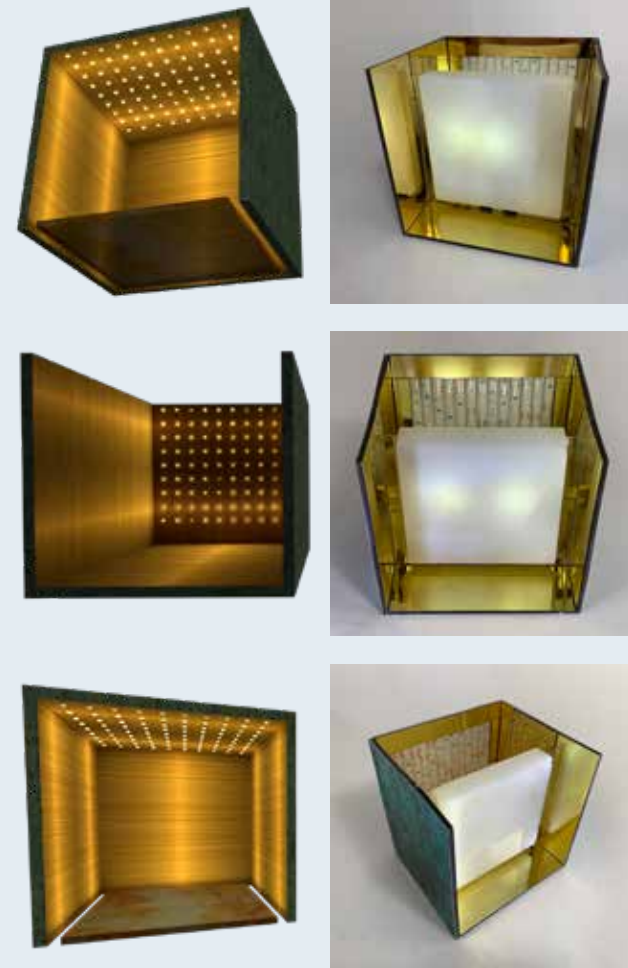
The backwalls are covered in leather for a warmer touch and feel as well as for acoustic reasons.



1st floor



## 3D MODEL AND PHYSICAL MODEL Light Box Development



The lightbox is mantled by oxidized copper on the outside.

The inside is clad with highly reflective brass.

An LED matrix serves as a hidden light source.

Onyx stone partially blocks the light from passing directly through the entirety of the box's opening.

Semi-transparent onyx creates a dimly lit atmosphere.

3D and Physical Models

## PERSPECTIVE RENDERING Sketchup & V-Ray





PHYSICAL MODEL  
Farnsworth House by Ludwig Mies van der Rohe



PERSPECTIVE RENDERING  
Sketchup & V-Ray





# Communal Living

Residential Dwelling

A residence for two families with kids in the heart of Manhattan challenges the traditional apartment living conditions in a historic row brick house on multiple levels.

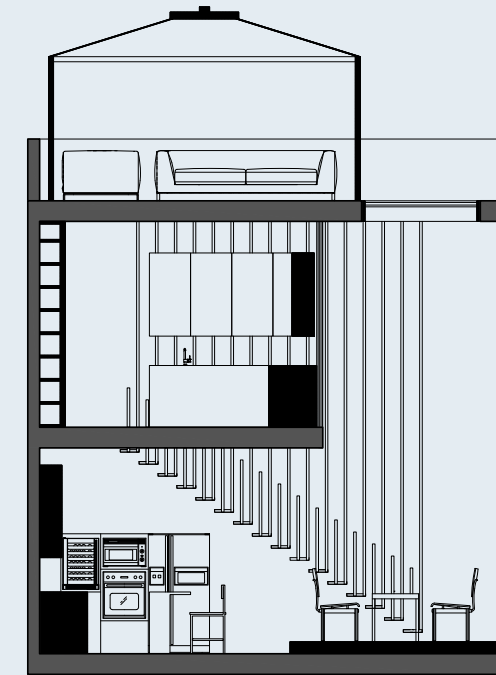
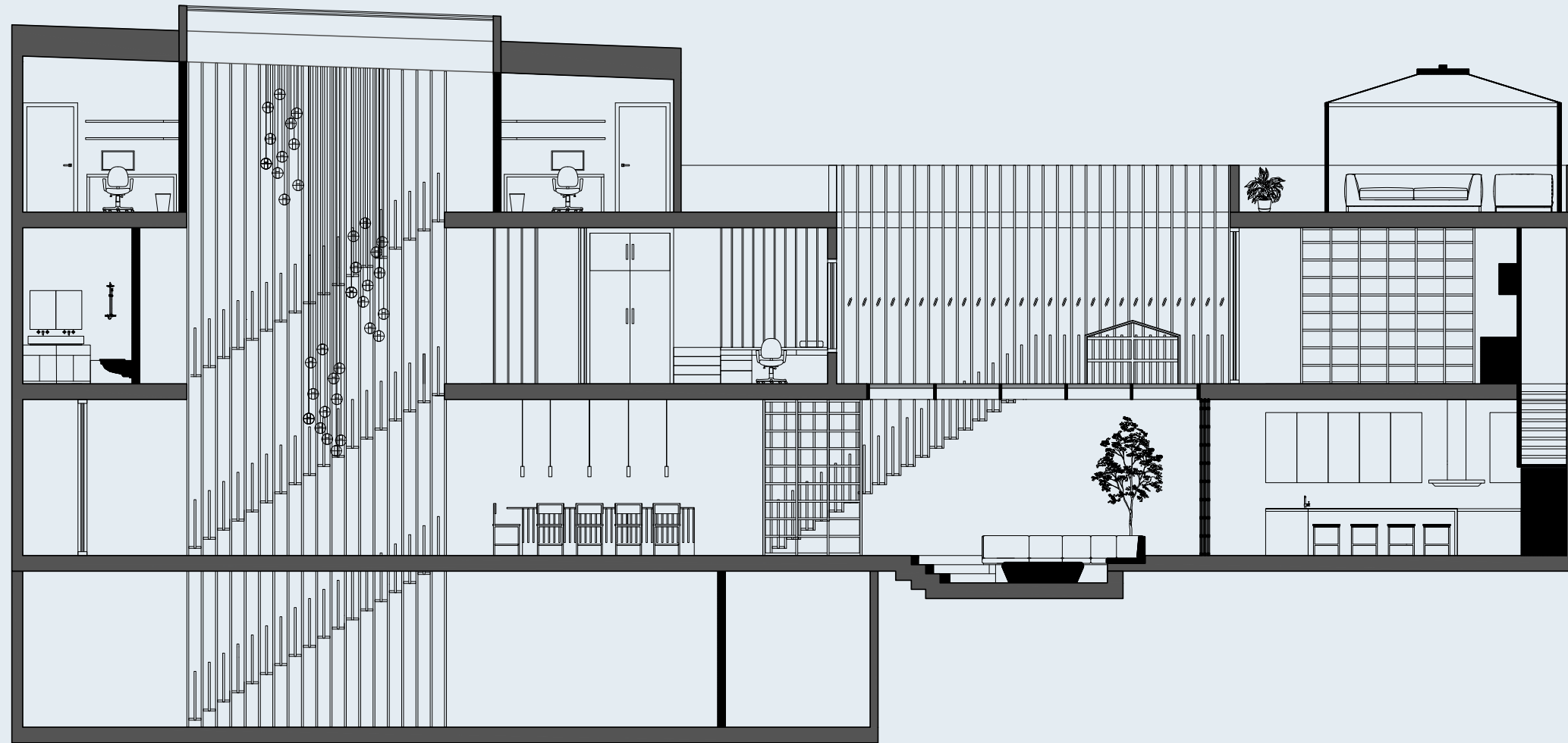
The core concept focusses on communal living while respecting personal safe havens.



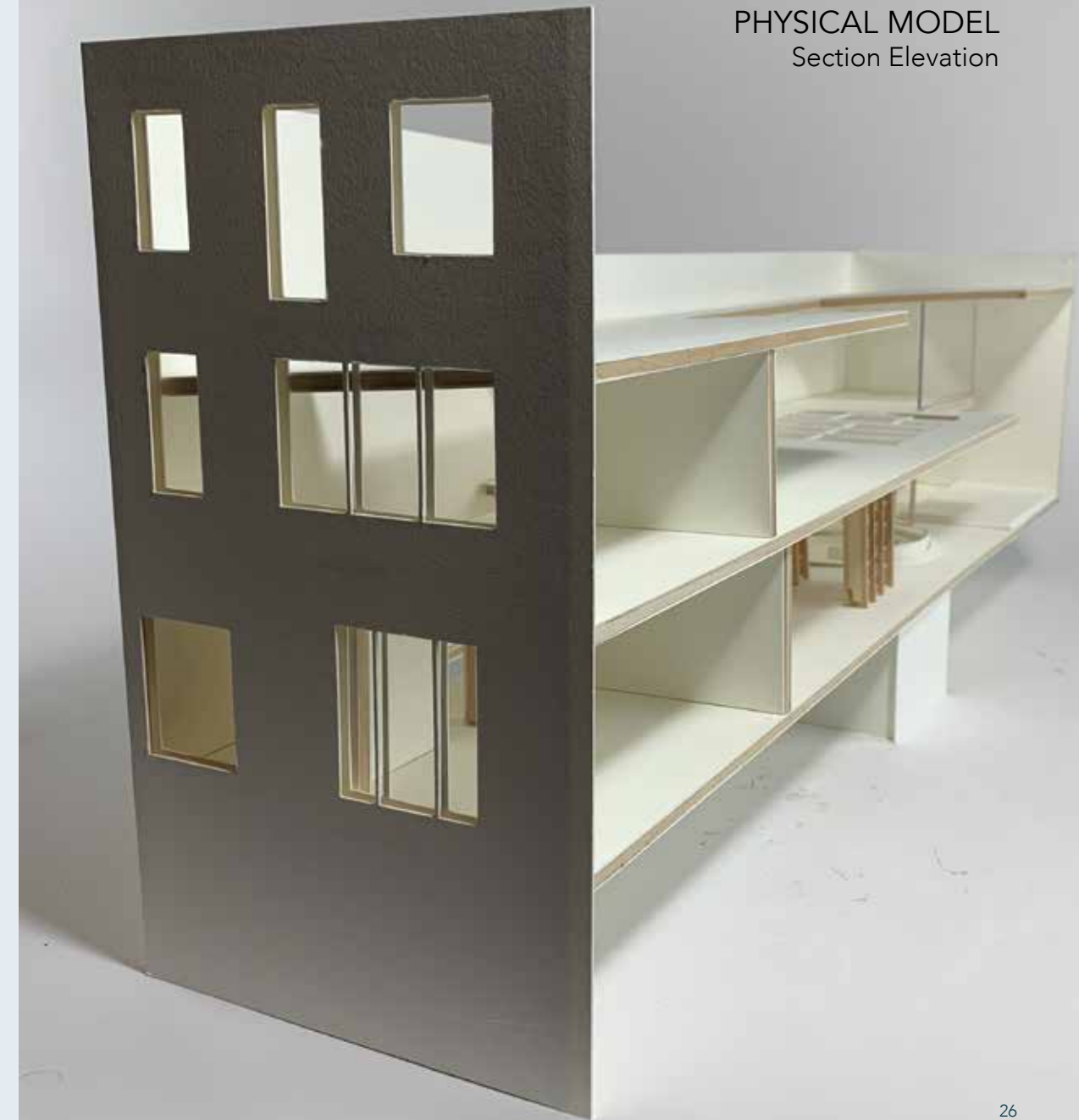
PERSPECTIVE RENDERING  
Sketchup & V-Ray



ARCHITECTURAL DRAWINGS  
Cross Sections



PHYSICAL MODEL  
Section Elevation

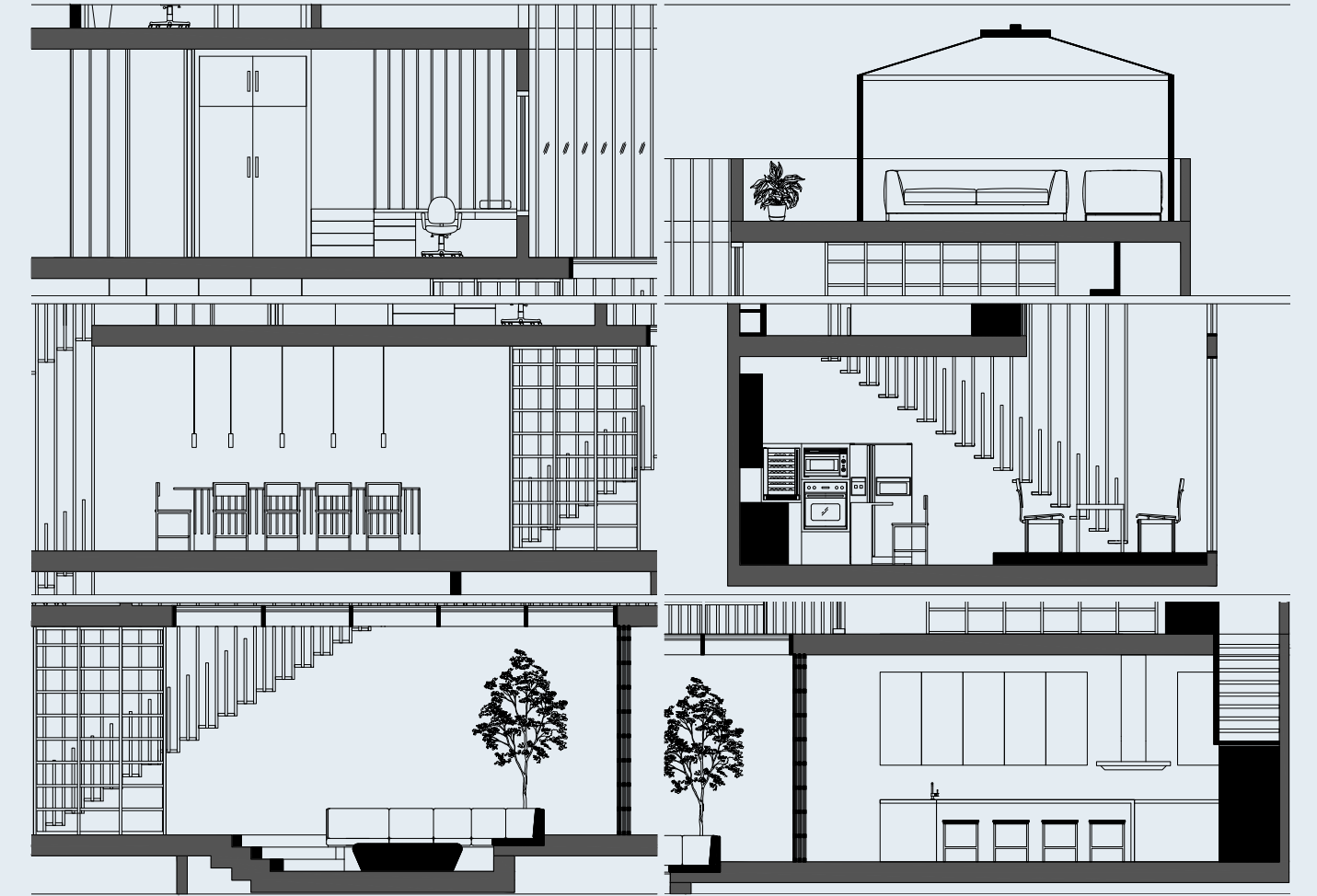




PERSPECTIVE RENDERING  
Sketchup & V-Ray



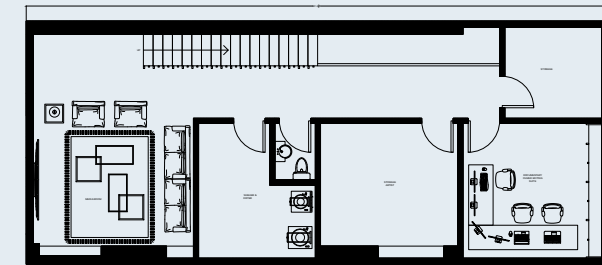
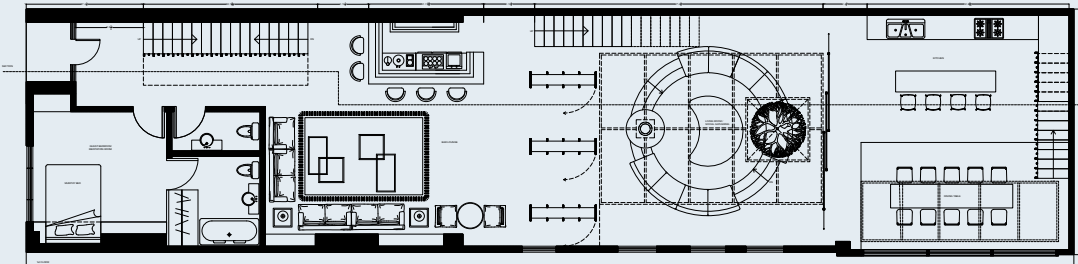
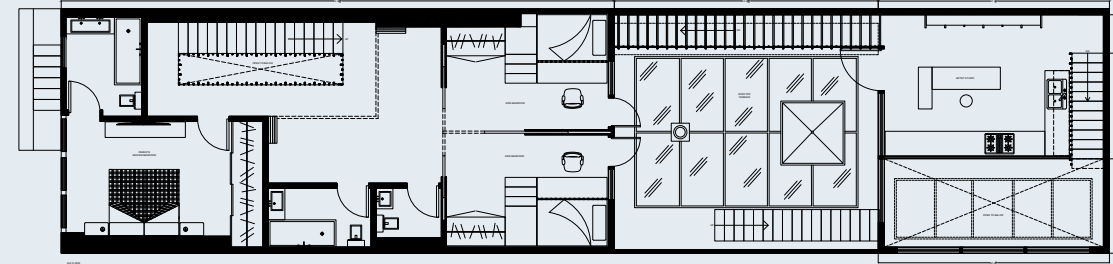
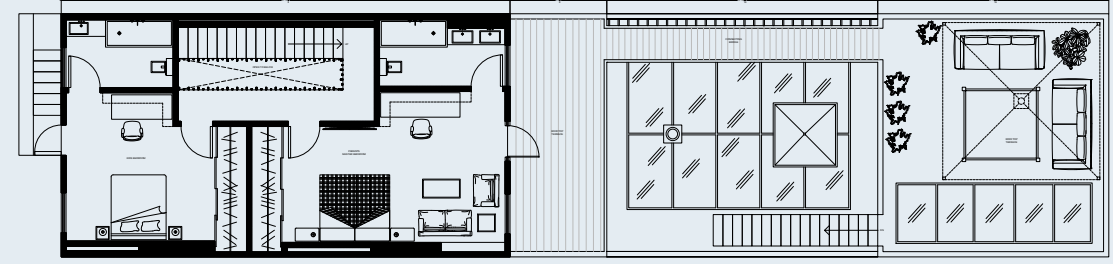
ARCHITECTURAL DRAWINGS  
Section Details





ARCHITECTURAL DRAWINGS

Floor Plans



PERSPECTIVE RENDERING

Sketchup & V-Ray