

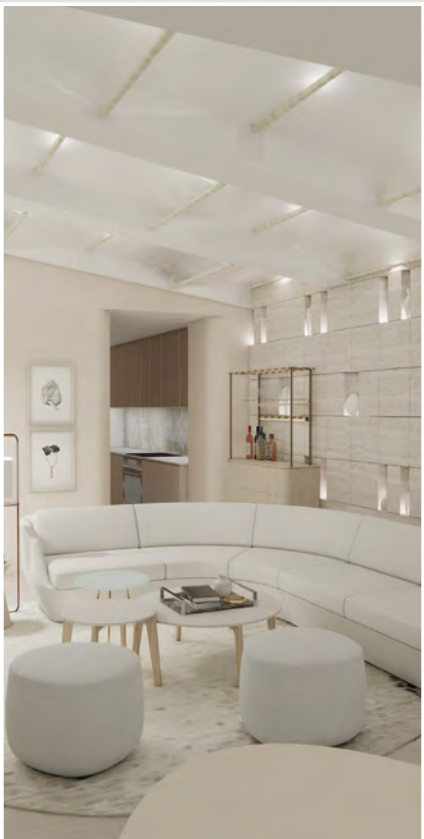
REALIZED PROJECTS
Christian Hinze



GRAND GENEVA
Resort Hotel
03 - 12



ROYAL POINCIANA
Poolside Patio
13 - 18



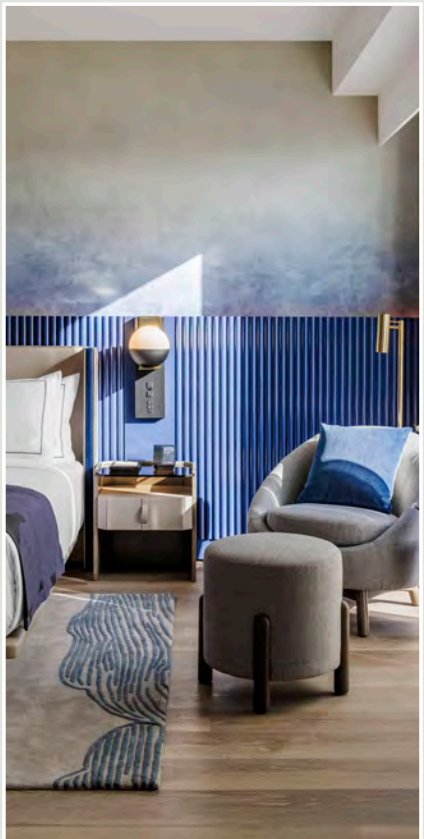
UWS TOWNHOUSE
Private Residence Option 1
19 - 27



UWS TOWNHOUSE
Private Residence Option 2
28 - 35



THE EMERY ROTH
Hospitality Living
36 - 40



THE MORROW HOTEL
Queen Bedroom & Bath
41 - 46



CUISINIER IMPERIAL
Fine Dining Restaurant
47 - 53



GRAND GENEVA RESORT

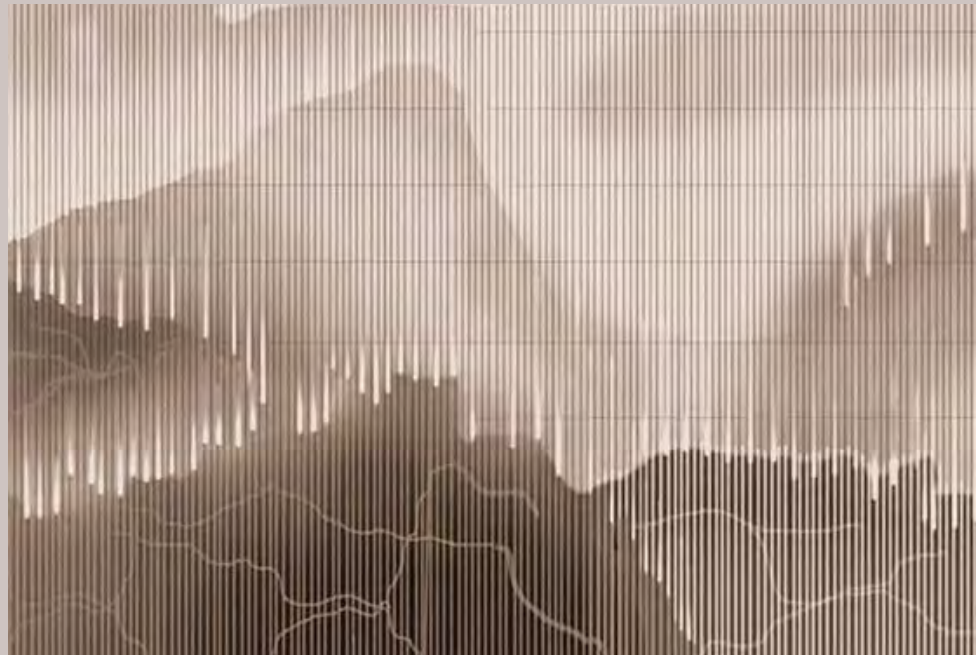
OUTDOOR ACTIVITY RESORT & SPA HOTEL

Take in the incredible views & rolling fairways of two championship, 18-hole golf courses on this luxury, outdoor focused retreat. Relax and rejuvenate in the spacious villas, gorgeous guest suites, and full-service spa surrounded by mother nature.

The conceptual approach for this deluxe sanctuary is based on the connection with its surrounding nature. Transporting the look and feel of a traditional cabin in the woods into an elevated vacation destination.

Traditional materials provide the base for this design approach. Wooden beams, stone floors and accent walls speak the local language of countryside. A desaturated color palette of refined architectural finishes soften the rough lumberjack look and boost the status quo.

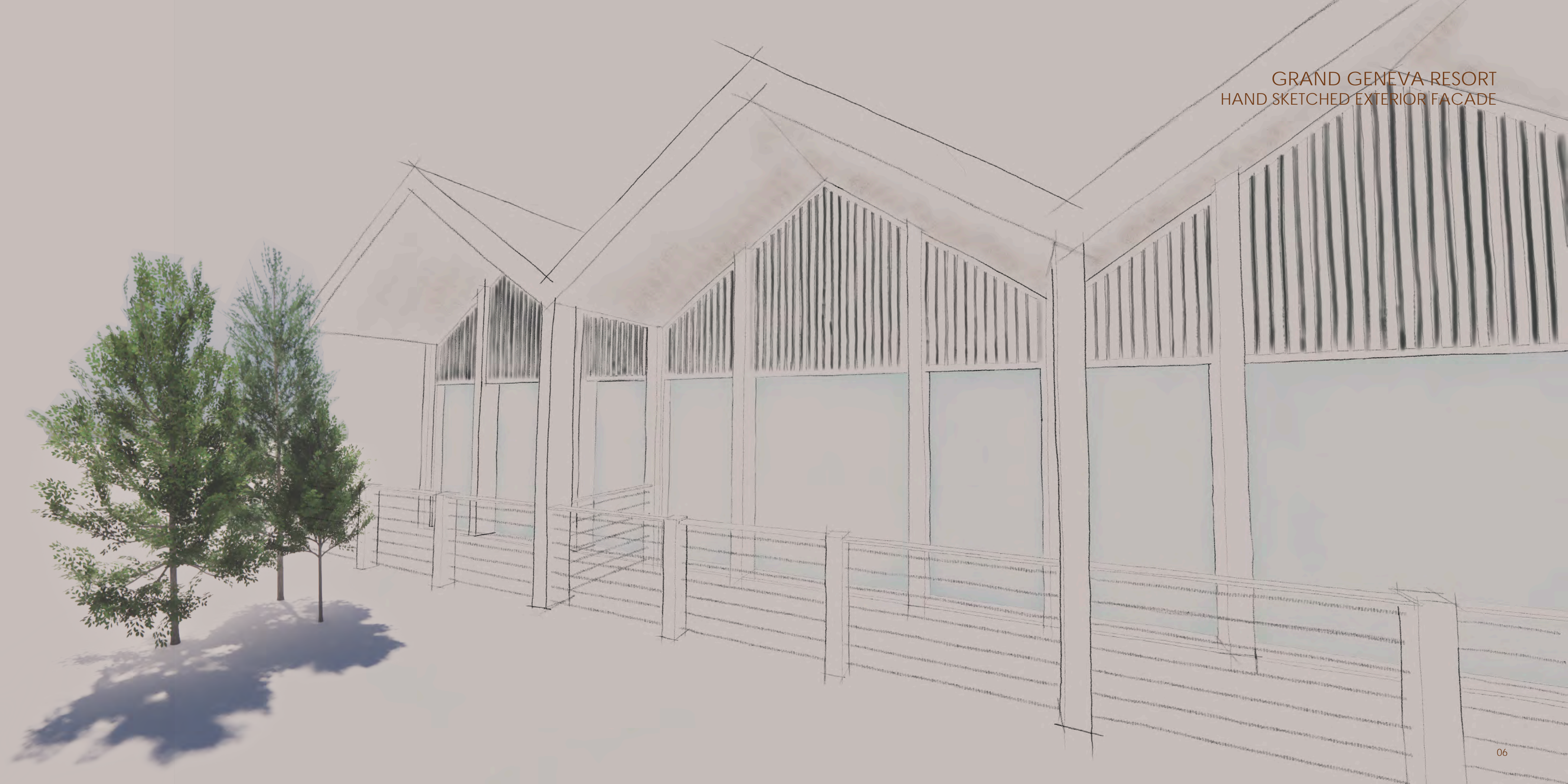
GRAND GENEVA RESORT
INSPIRATIONAL MOODS



GRAND GENEVA RESORT
FLOOR PLAN - DOUBLE QUEEN



GRAND GENEVA RESORT
HAND SKETCHED EXTERIOR FACADE

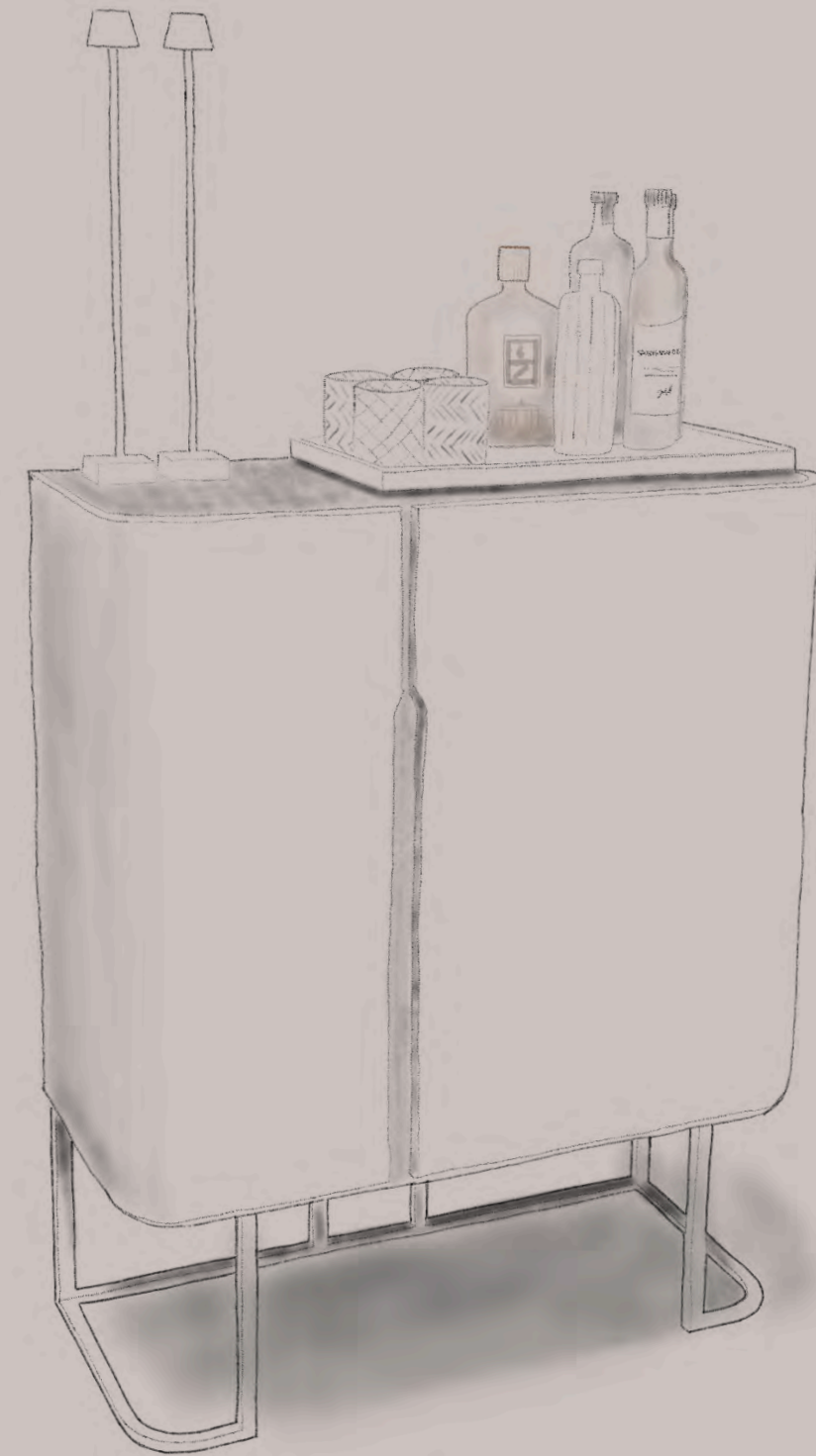
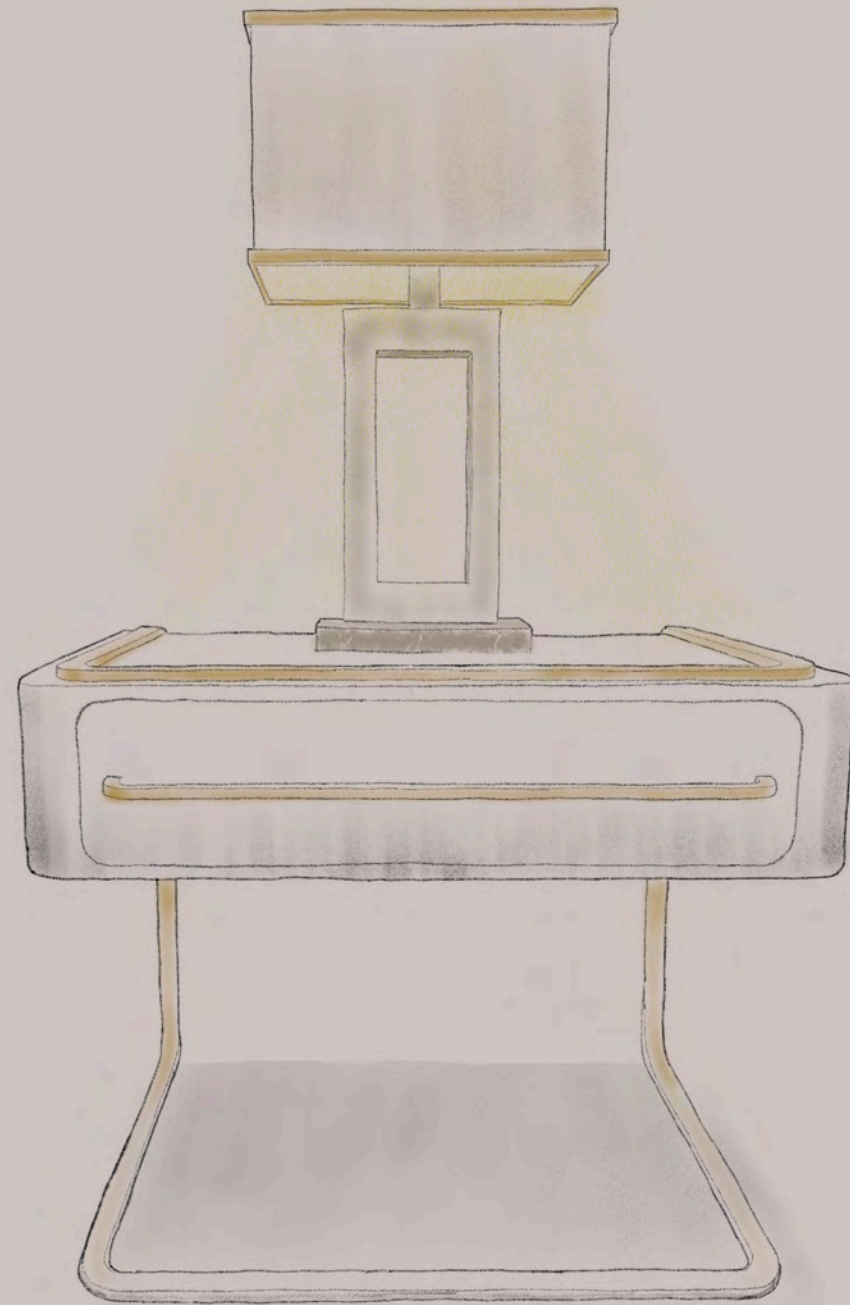
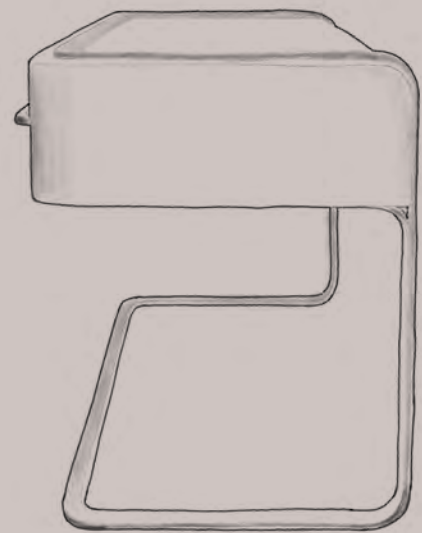


GRAND GENEVA RESORT
FIRE PLACE PERCPECTIVE





GRAND GENEVA RESORT
HAND SKETCHED FURNITURE DESIGNS



GRAND GENEVA RESORT
MATERIAL FINISHES



GRAND GENEVA RESORT
ALTERNATIVE PERSPECTIVES





GRAND GENEVA RESORT

DOUBLE QUEEN ROOM



POOLSIDE

Royal Poinciana South Miami - Exterior Patio

Welcome to Royal Poinciana South. Your getaway to Paradise in a luxurious and exclusive apartment home community in Palm Beach, FL.

With its iconic art deco architecture, modern, upscale finishes, state of the art furniture and installations, this complex offers the ultimate experience in luxury living on a private island.

The complex features a wealth of amenities and breathtaking views. One of it's highlights is the outdoor patio with pool, cabanas, sun shading umbrellas, sun lounge chaises and intimate seating arrangements around open fire pits.

POOLSIDE PATIO Exterior Ground Floor Plan



The outdoor patio is adjacent to the buildings gym, fitness and yoga facilities.

A large swimming pool is located in the center of the courtyard. Luxurious day-beds, chaises and open fire pits surround the pool area to comfort guests and residents alike while they seek shelter under the lush sunshades.



CONCEPT DETAILS
Concept Imagery
Mood Board



TUCCI
TEAK UMBRELLA
OCEAN MASTER MAX



GANDIA BLASCO
CHAISE LOUNGE
TIMELESS



RH
DAYBED
AVIARA



RH
LANTERN
TOULON



ATELIER VIERKANT
PLANTER
LG | XL



B&B ITALIA
ARMCHAIR
BAY



ECOSMART
FIREPIT
ARK 40



JANUS ET CIE
LOUNGE CHAIR
ANATRA



POOLSIDE
Perspective Renderings





Poolside

Royal Poinciana South
Exterior Patio



UWS TOWNHOUSE

GUT HOME RENOVATION | OPTION 1

ONE SPACE - TWO DESIGN SOLUTIONS

This beautiful turn of the century townhouse on one of the tranquil tree lined side alleys of the Upper West Side aims to bring a relaxing modern vibe into the interior.

A minimalistic contemporary approach is aimed at for this modern design option.

The focus is on a desaturated color palette that is friendly and bright to ease the mind through the absence of visual noise with clean linear geometry and minimal, carefully curated design details that focus attention on custom designed eyecatchers.

UWS TOWNHOUSE
FLOOR PLAN | GROUND FLOOR

















UWS TOWN- HOUSE

Contemporary Residential



UWS TOWNHOUSE

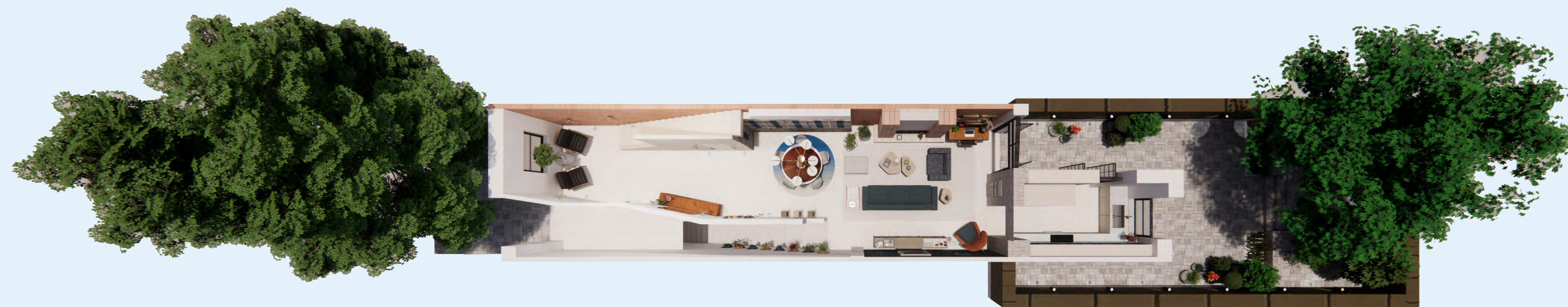
GUT HOME RENOVATION | OPTION 2

ONE SPACE - TWO DESIGN SOLUTIONS

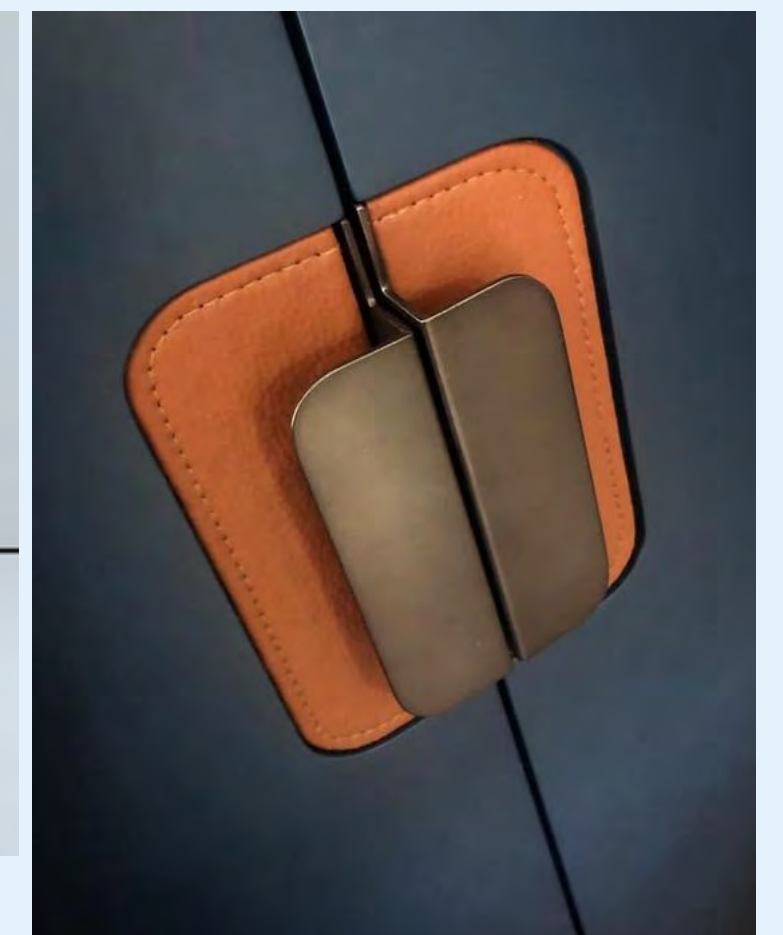
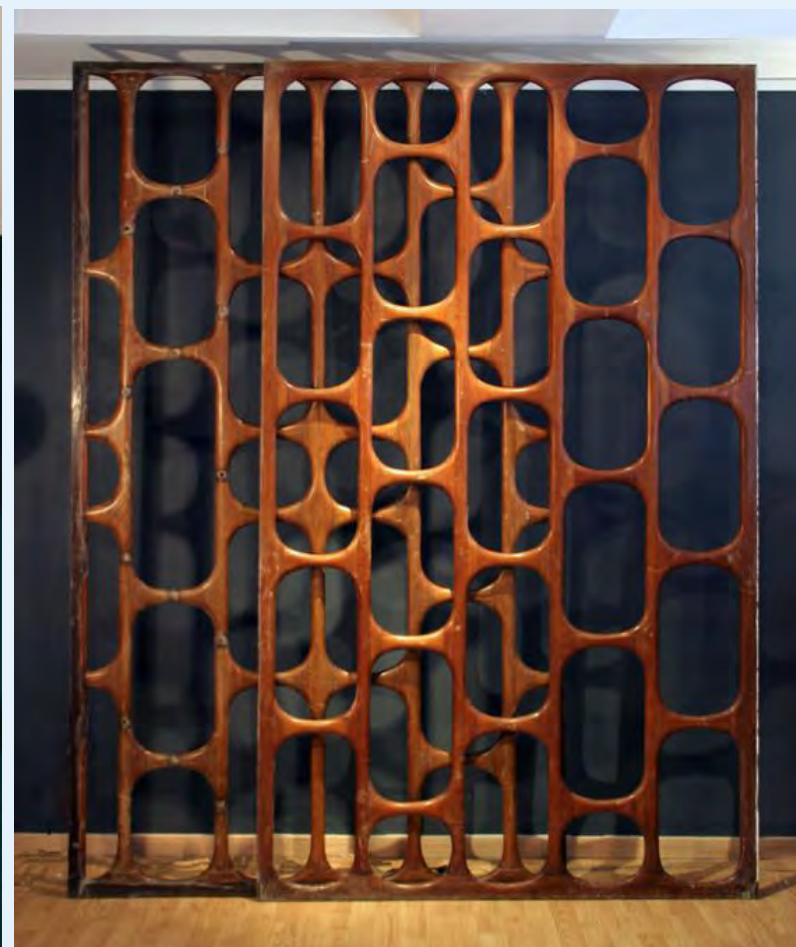
This beautiful turn of the century townhouse on one of the tranquil tree lined side alleys of the Upper West Side aims to revive the midcentury modern era with modern twist and contemporary interpretation.

A cozy and lush mid-century vibe is targeted for this beautiful refuge. Vibrant colors juxtapose warm tones with elegantly cool accents.

The focus is on a strong and bright color palette that is friendly and inviting. Ecclectic art pieces and carefully curated memorabilia inhabit this space and provide it with a sense of personality to make it a home.

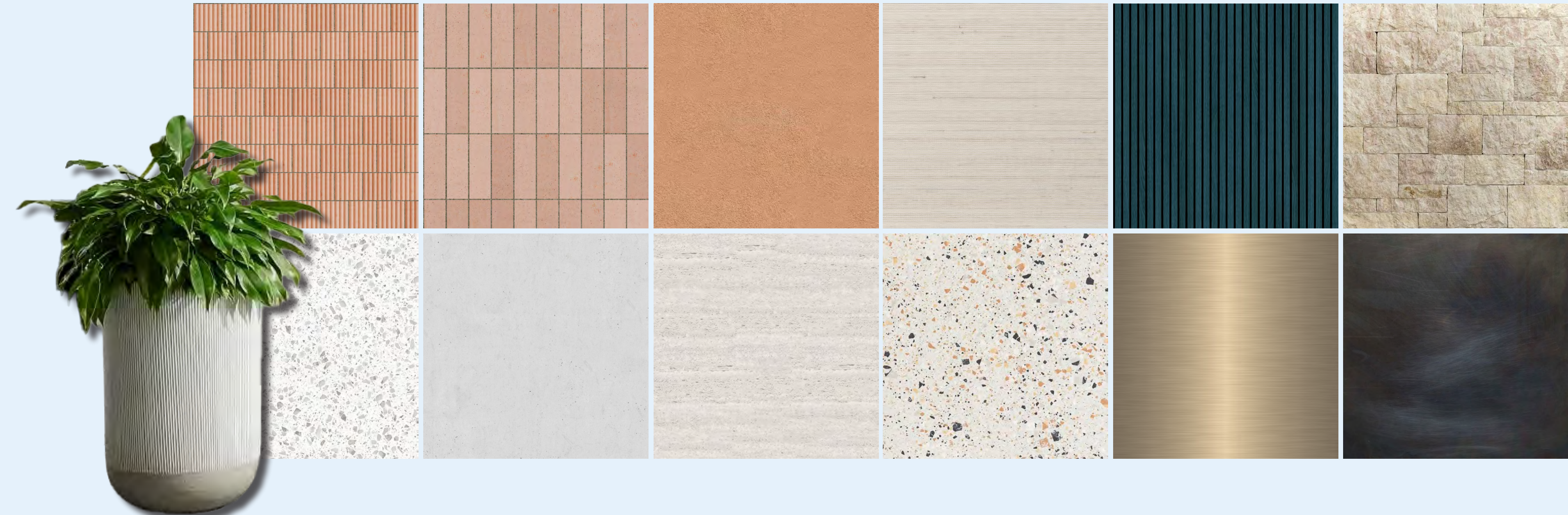


UWS TOWNHOUSE
LIVING ROOM INSPIRATION | OPTION 2



UWS TOWNHOUSE
DINING ROOM INSPIRATION | OPTION 2











UWS TOWN- HOUSE

Midcentury Modern
Inspired Residential



THE EMERY ROTH

Contemporary Hospitality Living

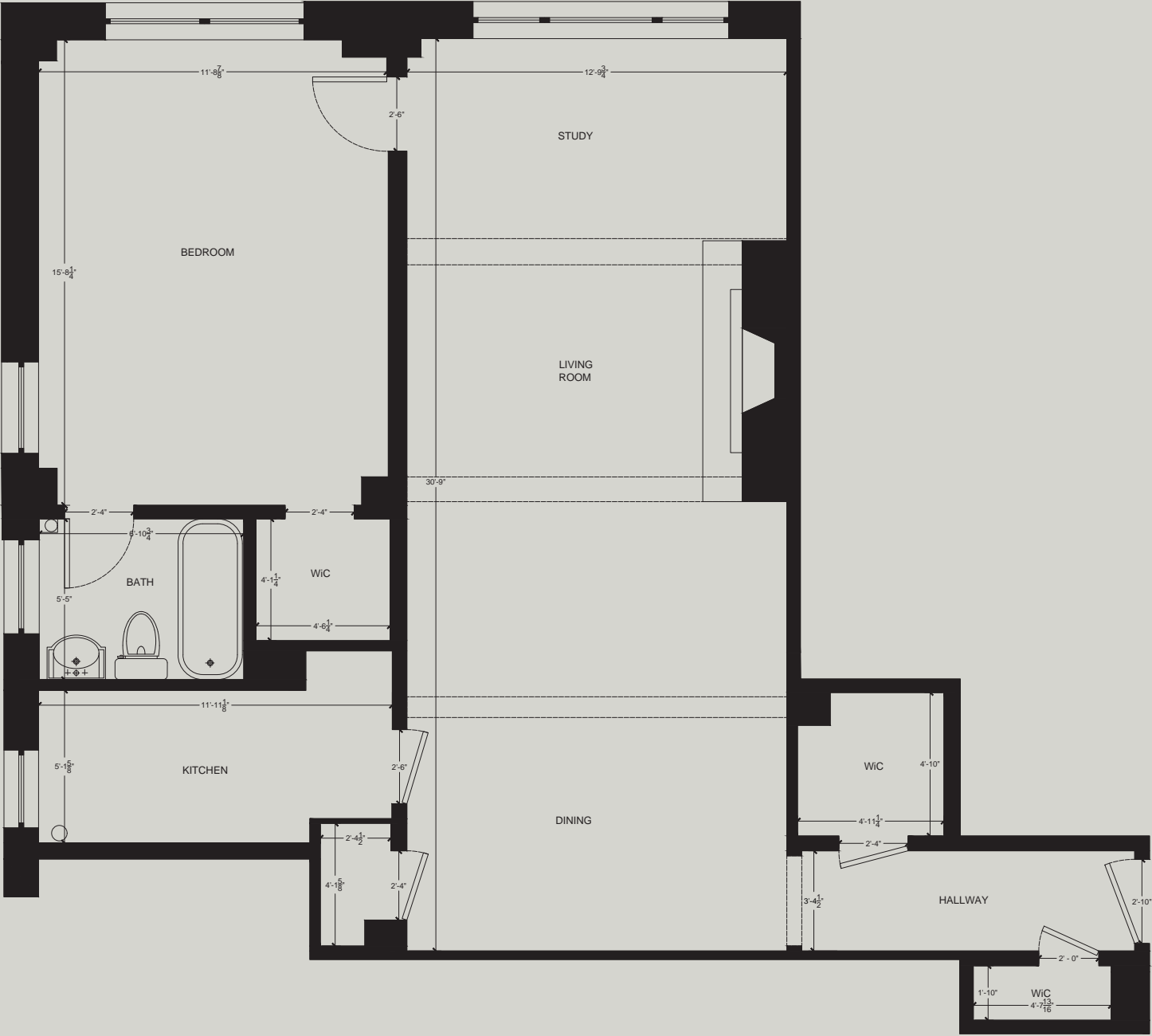
During the height of Emery Roth's architectural career in the 1920's and 1930's, he designed a plethora of NYC based hotels and residential apartment buildings. The Emery Roth in NYC's Rose Hill district was completed in 1931.

The majestic 'great room' reaches over 30 ft into the core of the building where natural light becomes scarce.

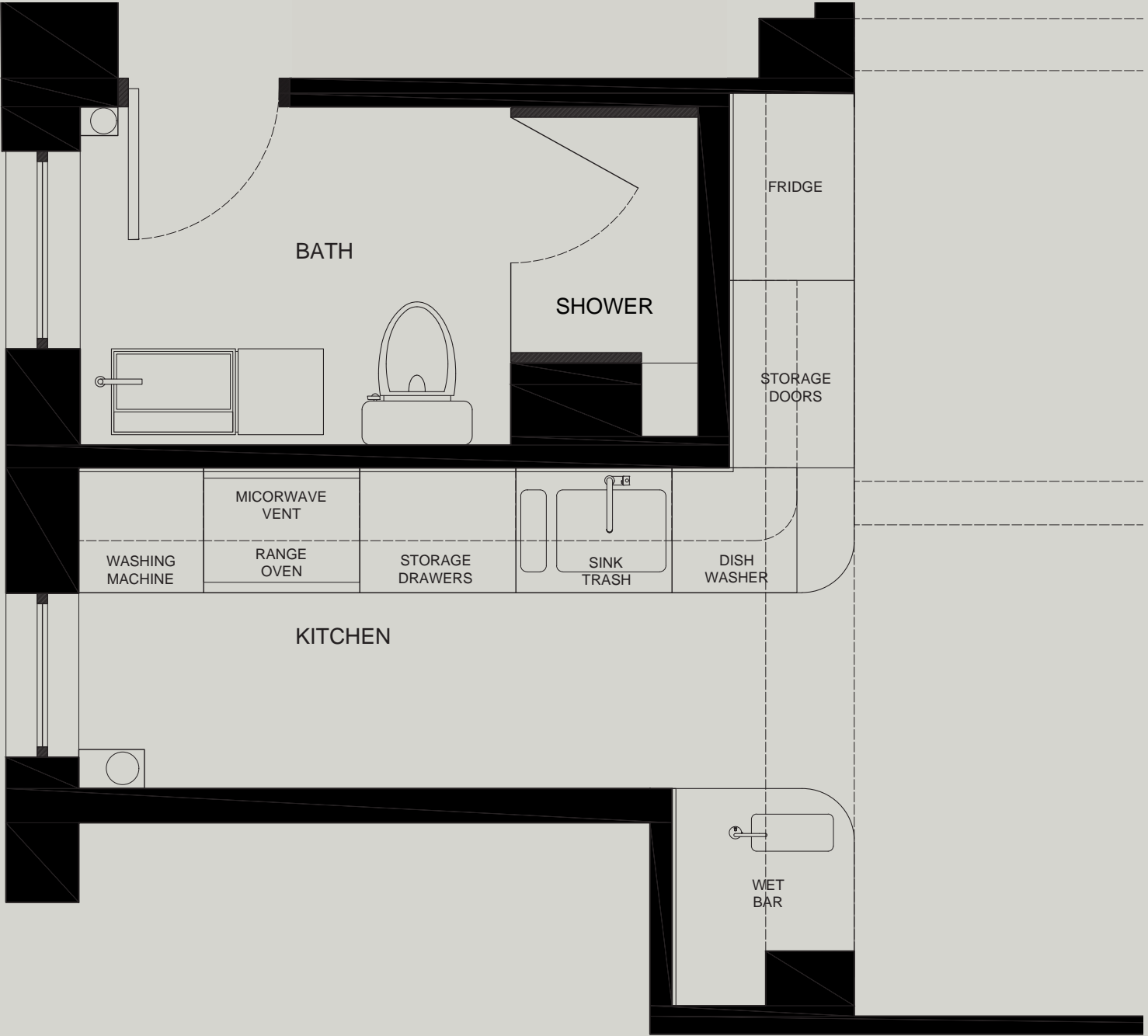
The challenge with this gut-renovation was to bring natural light into the depth and core of the dwelling.

By opening up the floor-plan and integrating the kitchen into the dining area, natural light can flow through the side windows into the heart of the dining room, wet-bar and kitchen.

THE EMERY ROTH
Contemporary Residential Apartment



1 FLOOR PLAN - EXISTING CONDITIONS #10B
SCALE: 3/4" = 1' 0"



2 FLOOR PLAN - NEW DEVELOPMENT #10B
SCALE: 3/4" = 1' 0"

The dining area acts as the heart of this dwelling with the double function of greeting habitants when they enter the home.

Opening up the floor plan to enlarge the kitchen enables the passageway of light to travel into the darker corners of the dining are and allows for extended views over the cities skyline.

THE EMERY ROTH
Perspectives & Finishes





CONCEPTUAL MOOD IMAGES



BATHROOM RENDERING



THE EMERY ROTH

Contemporary Residential



THE MORROW

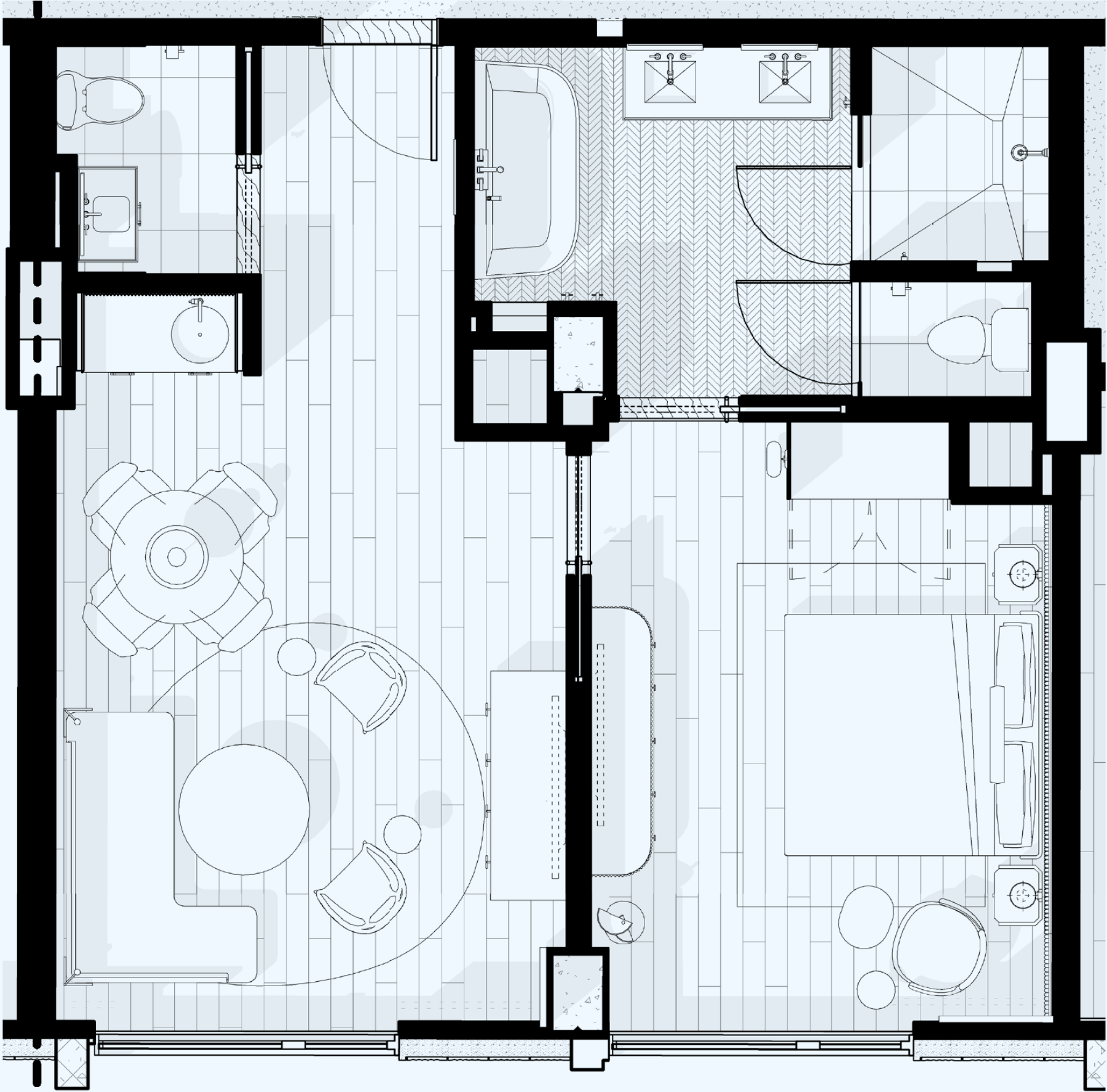
Hotel Suite | Bedroom & Bath

The Morrow Hotel is the latest newcomer in Washington D.C.'s former industrial district and therefore just steps away from the bustling NoMa neighborhood.

The rising sun, the sun at mid-day and the half moon form this hotel brands logo. These natural circular elements informed the design language for this hotel concept.

The color pallet with its natural light warm tones contrast the cool blue and grey green hues that dominate focal points.

THE MORROW
Hotel Suite & Bath

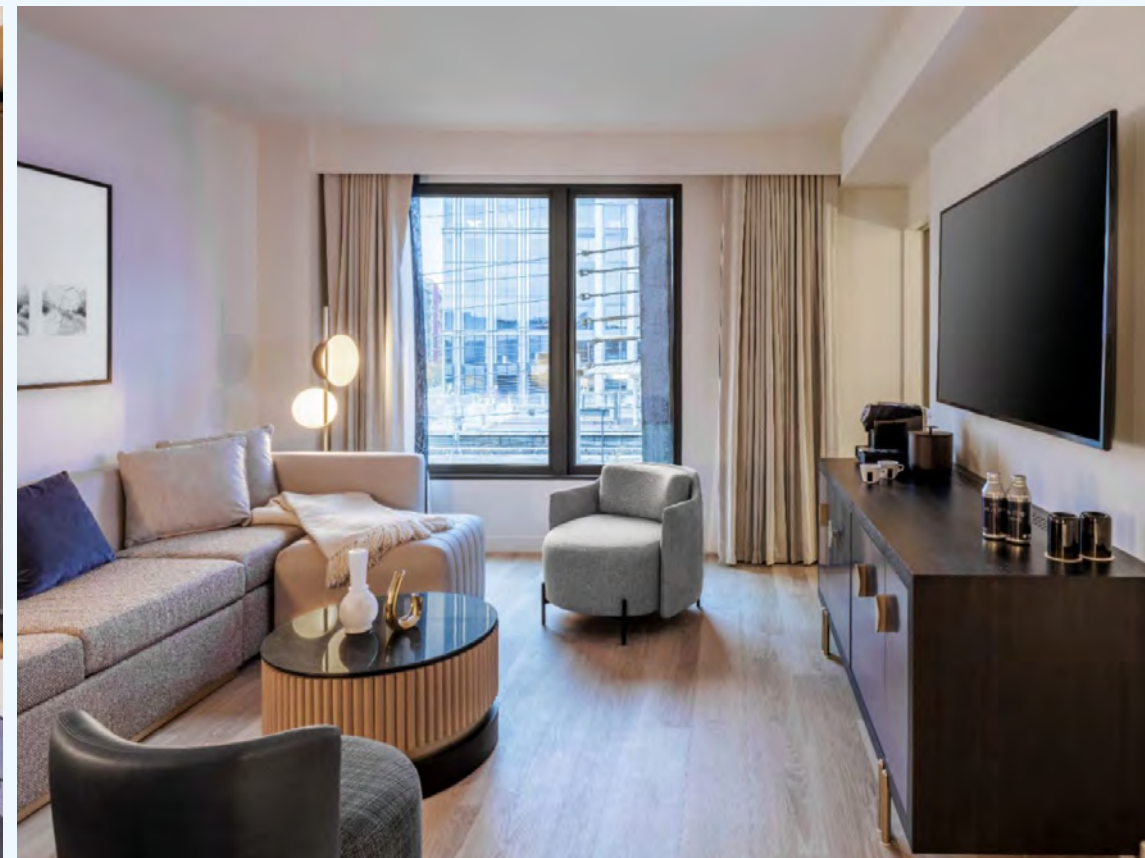
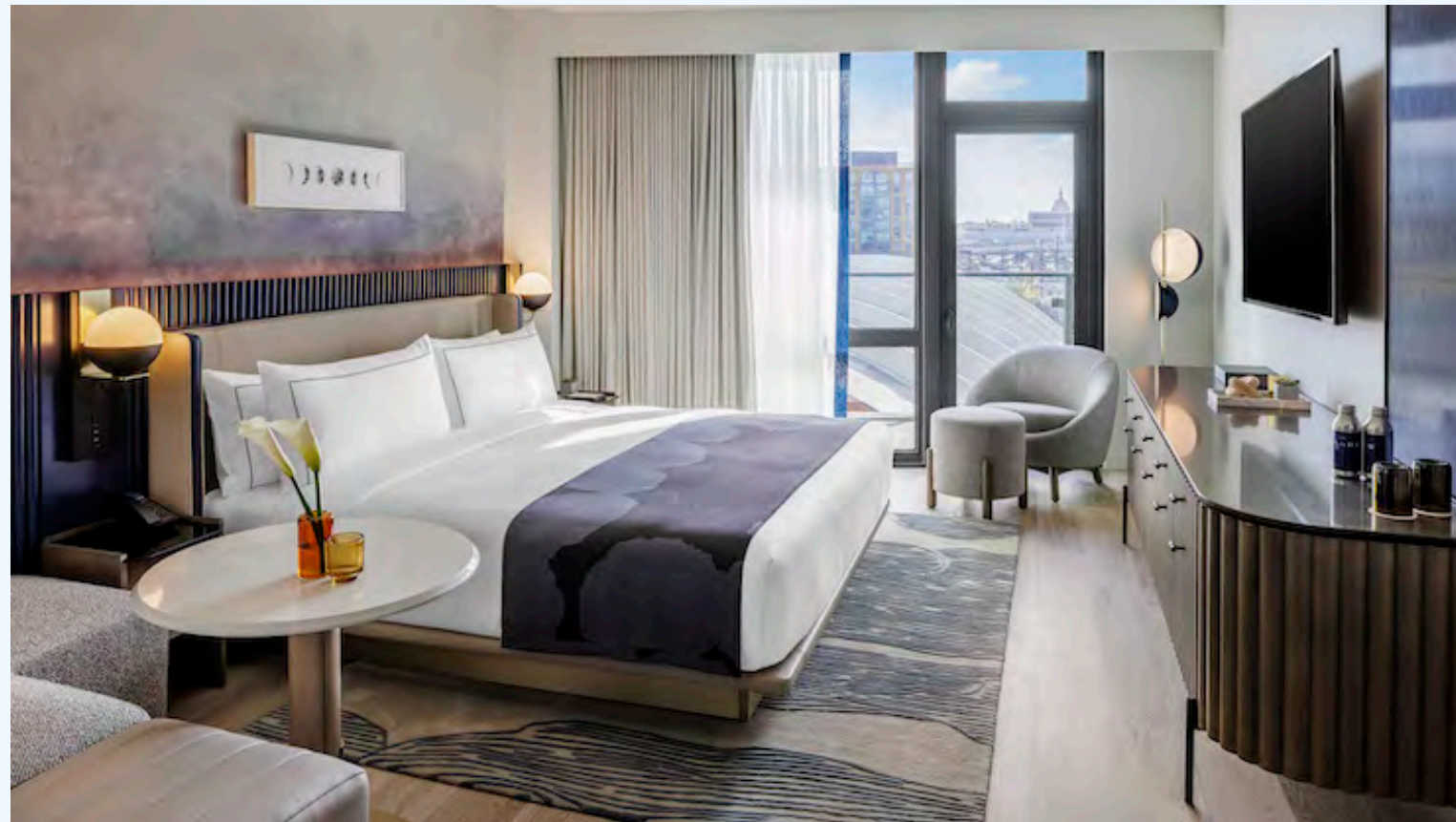


The most gracious standard Suite offers a beautifully designed living space, a king bed, master bathroom with walk in shower and bath tub, half bath, a dedicated wet bar and a comfortable seating area with stunning city views.

THE MORROW
Concept & Mood Imagery



THE MORROW
Photos of Realized Project
Bedroom | Suite





CONCEPTUAL MOOD IMAGES



FINAL BATHROOM RENDERING



THE MORROW

Bedroom Suite



ATLAS BLOCK

Le Cuisinier Impérial | Fine Dining Restaurant

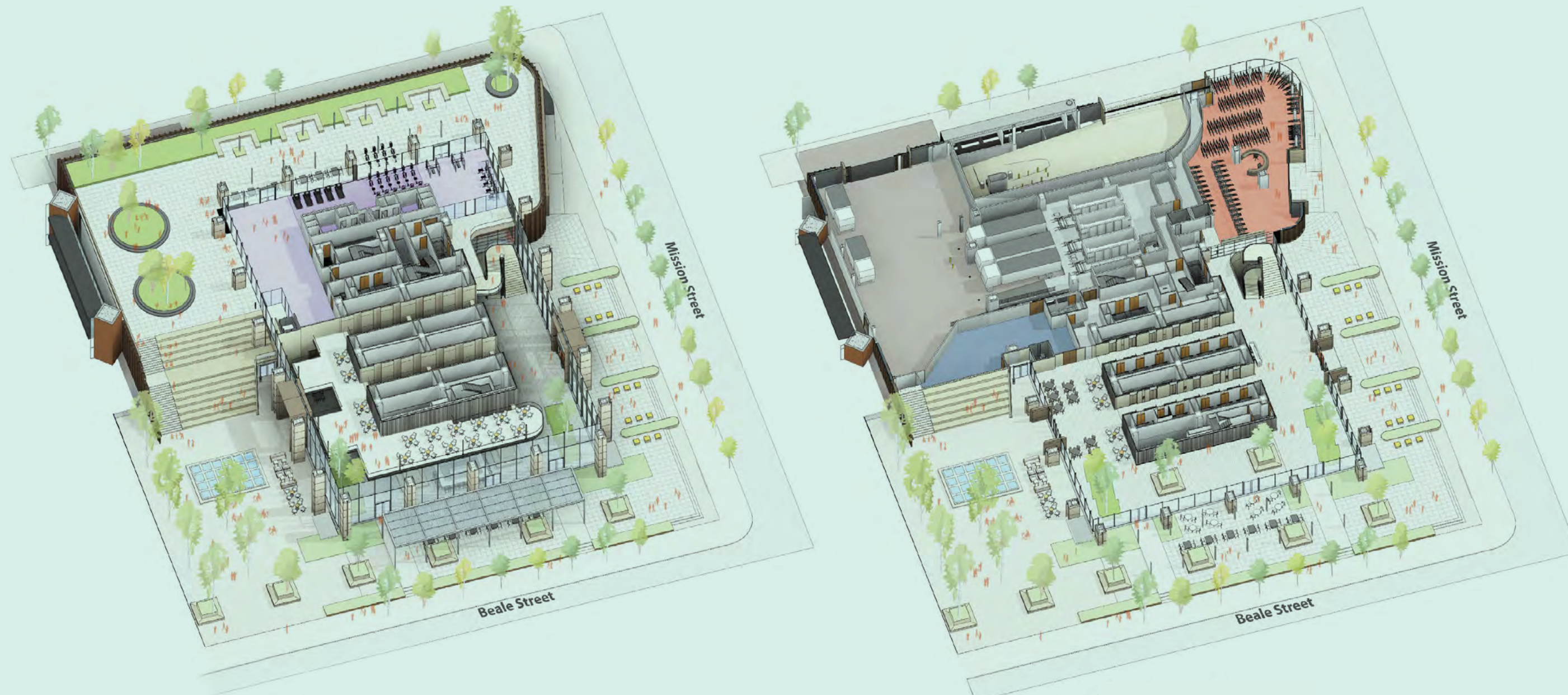
Atlas Block is situated within San Francisco's Financial District on Market Street. It is the main artery which runs across town right from the historic Ferry Building.

Pacific Gas & Electric was the former tenant on this block, running their business out of the beautiful turn of the century pre-war buildings that are laden with ornaments and stucco in classic historic style.

A respectful dialog between the existing and new structures was aimed at to celebrate traditional values as much as contemporary progress.

ATLAS BLOCK

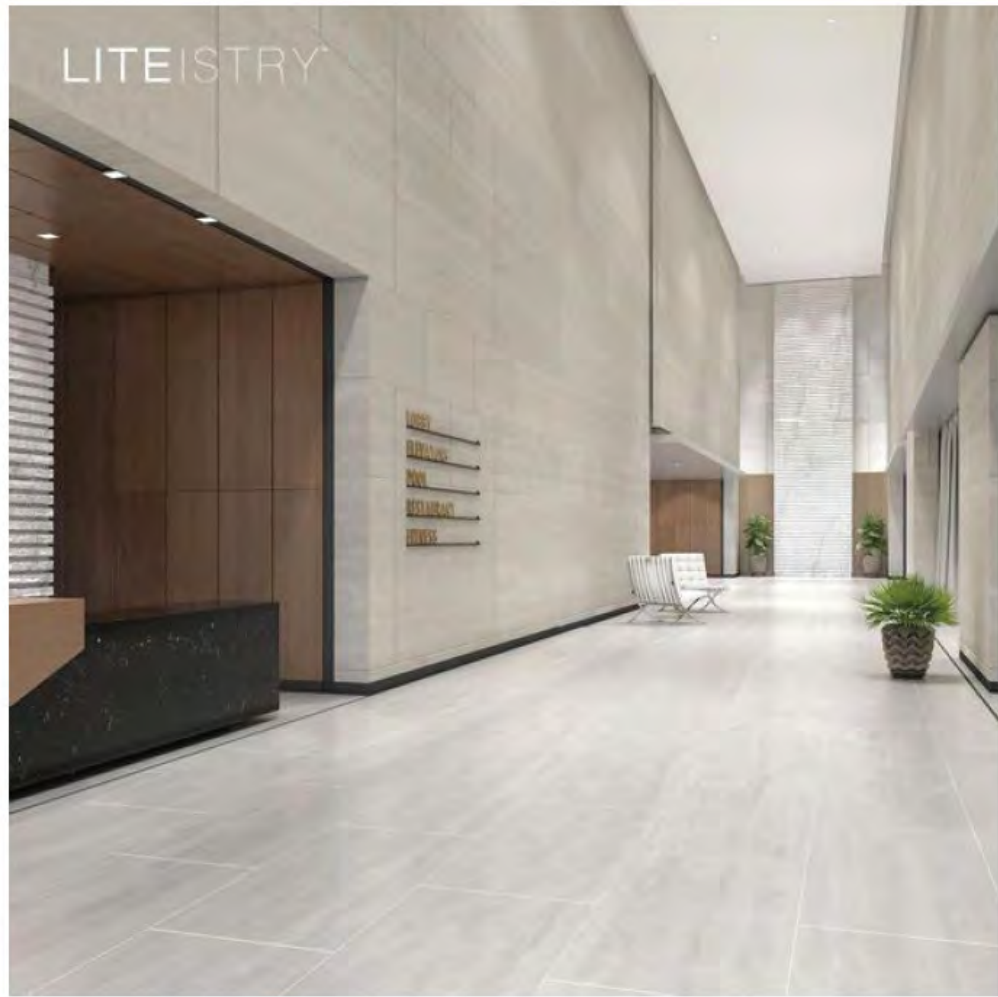
Axonometric Projection | 1st Floor & Mezzanine



The high-rise on 200 Mission St. was planned to host a predominantly commercial use.

In the ground floor lobby of this office building complex, the investor planned for a fine dining restaurant that can function for private dinner parties and upscale dining as well as for convenient lunches during the daytime.

The clients requirements were solved by introducing a mezzanine level into the 30 feet high ground floor lobby.



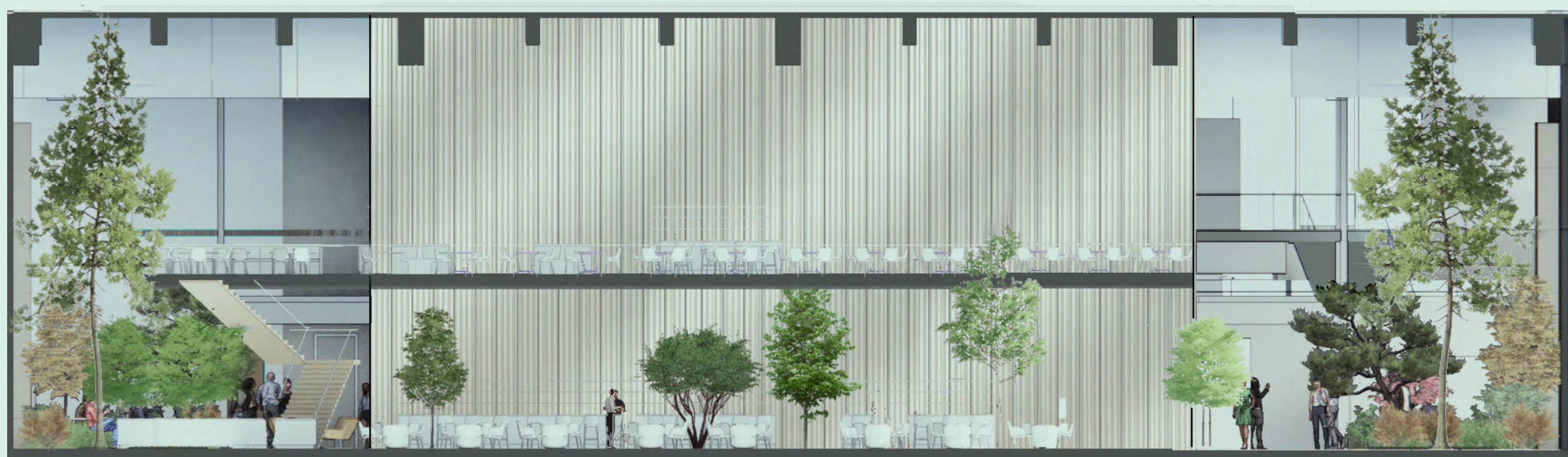
ATLAS BLOCK
Lobby Concept
Mood Images

ATLAS BLOCK
Restaurant Concept
Mood Images



ATLAS BLOCK

Elevation | Ground Floor Lobby



This elevation shows the South facing view of the restaurant.

While the mezzanine seating provides a more private atmosphere for fine dining and private events, the ground floor caters during lunch hours as well as evening dinners.

A staircase connects the ground floor to the floating mezzanine level that allows treetop views to the level below and the surrounding park.

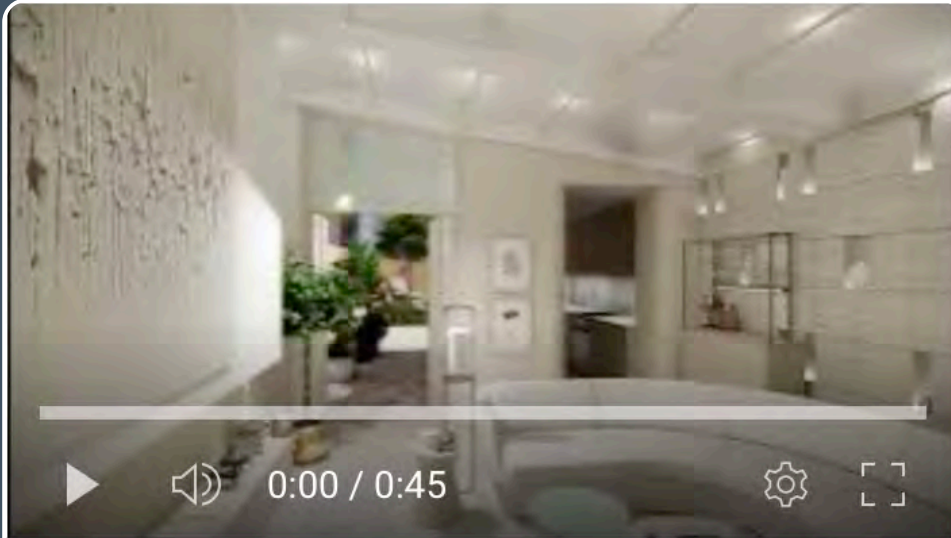
ATLAS BLOCK
Perspective Clay Renderings





ATLAS BLOCK

Le Cuisinier Imperial
Fine Dining Restaurant

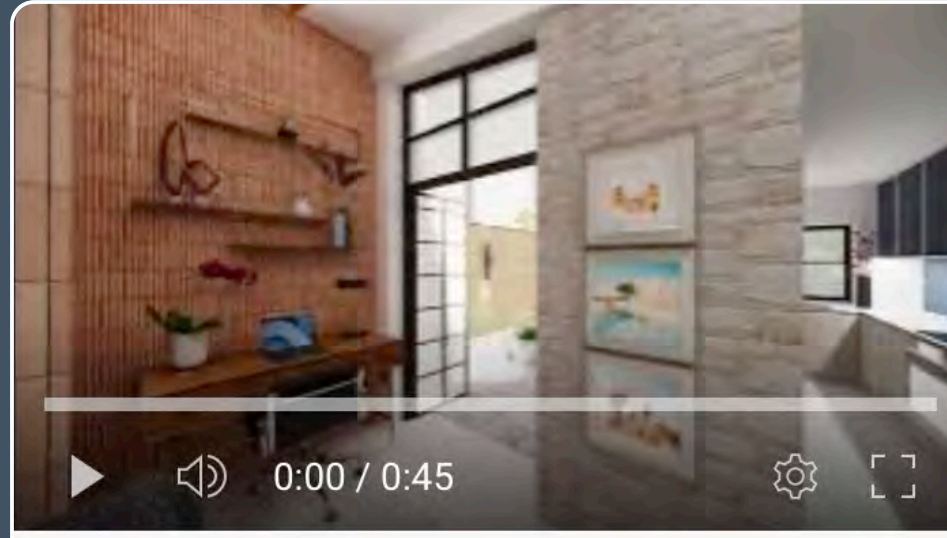


Video link
<https://youtu.be/9Y1x6JUCREk>

Filename
OPTION 01.mp4

Video quality
SD **HD**

<https://youtu.be/9Y1x6JUCREk>



Video link
<https://youtu.be/xwmaNAcr0y0>

Filename
UWS TOWNHOUSE Option 2.mp4

Video quality
SD **HD** **4K**

<https://youtu.be/xwmaNAcr0y0>

WALK THROUGH

Video Clips