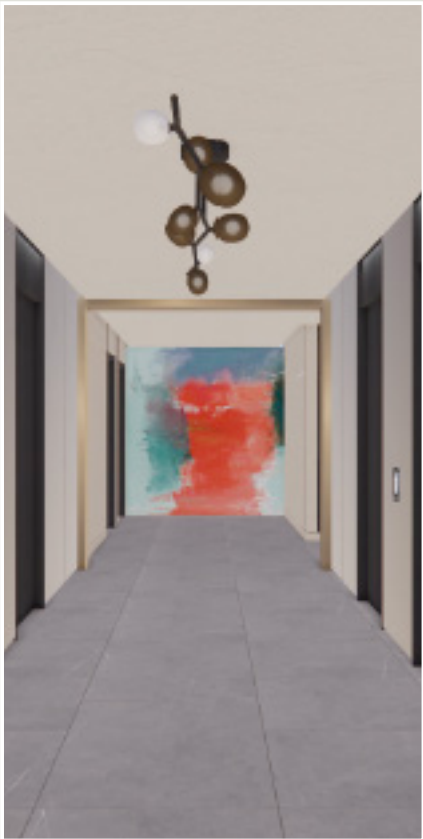


REALIZED PROJECTS
Christian Hinze



RECEPTION LOBBY
Luxury Residential
03 - 07



ATLAS BLOCK
Fine Dining Restaurant
08 - 14



ROYAL POINCIANA
Poolside Patio
15 - 20



UWS TOWNHOUSE
Private Residence
21 - 29



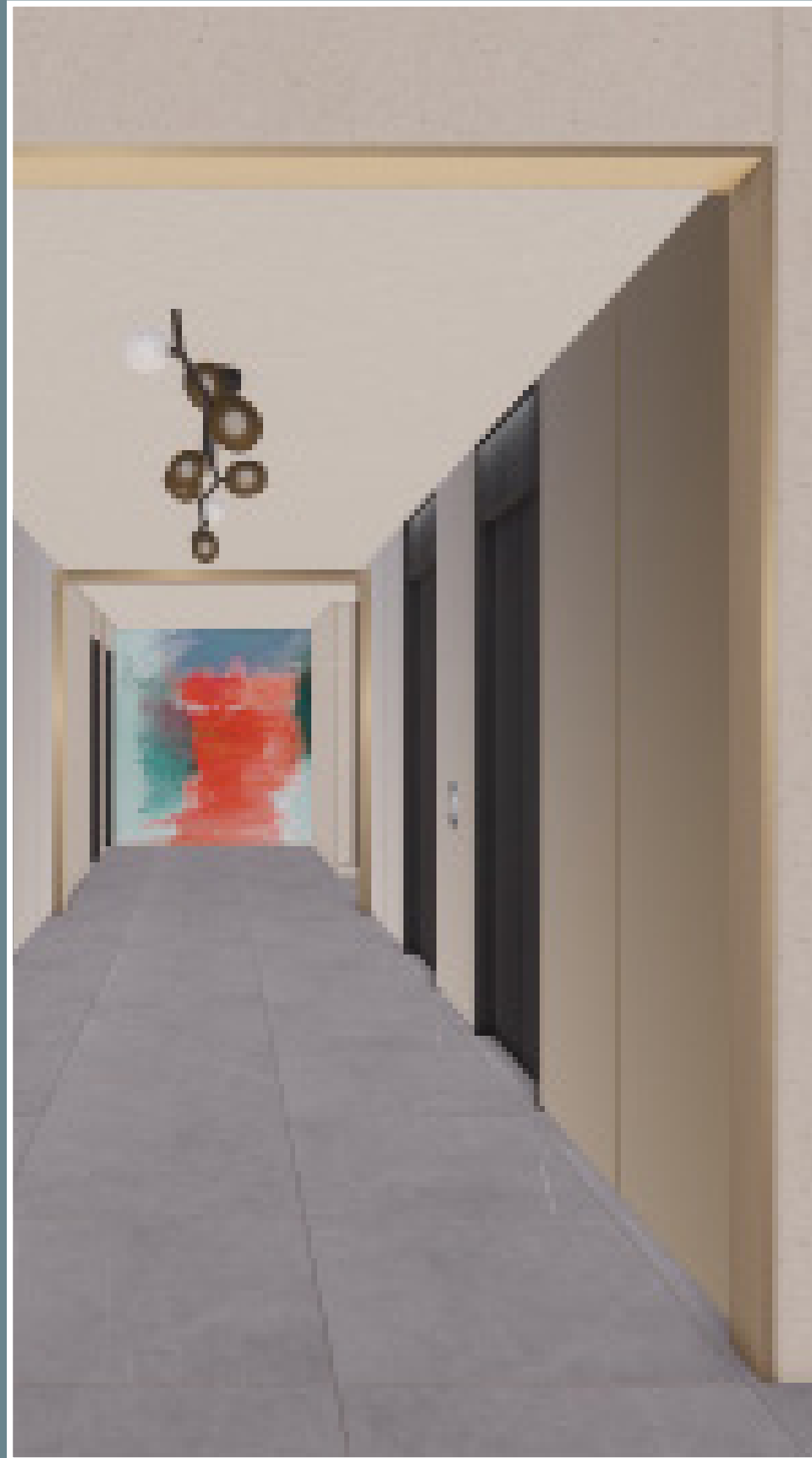
GRAND GENEVA
Resort Hotel
30 - 37



THE EMERY ROTH
Private Residence
38 - 42



THE MORROW HOTEL
Queen Bed- & Bathroom
43 - 48



RESIDENTIAL LOBBY

Upscale Waterfront Lifestyle

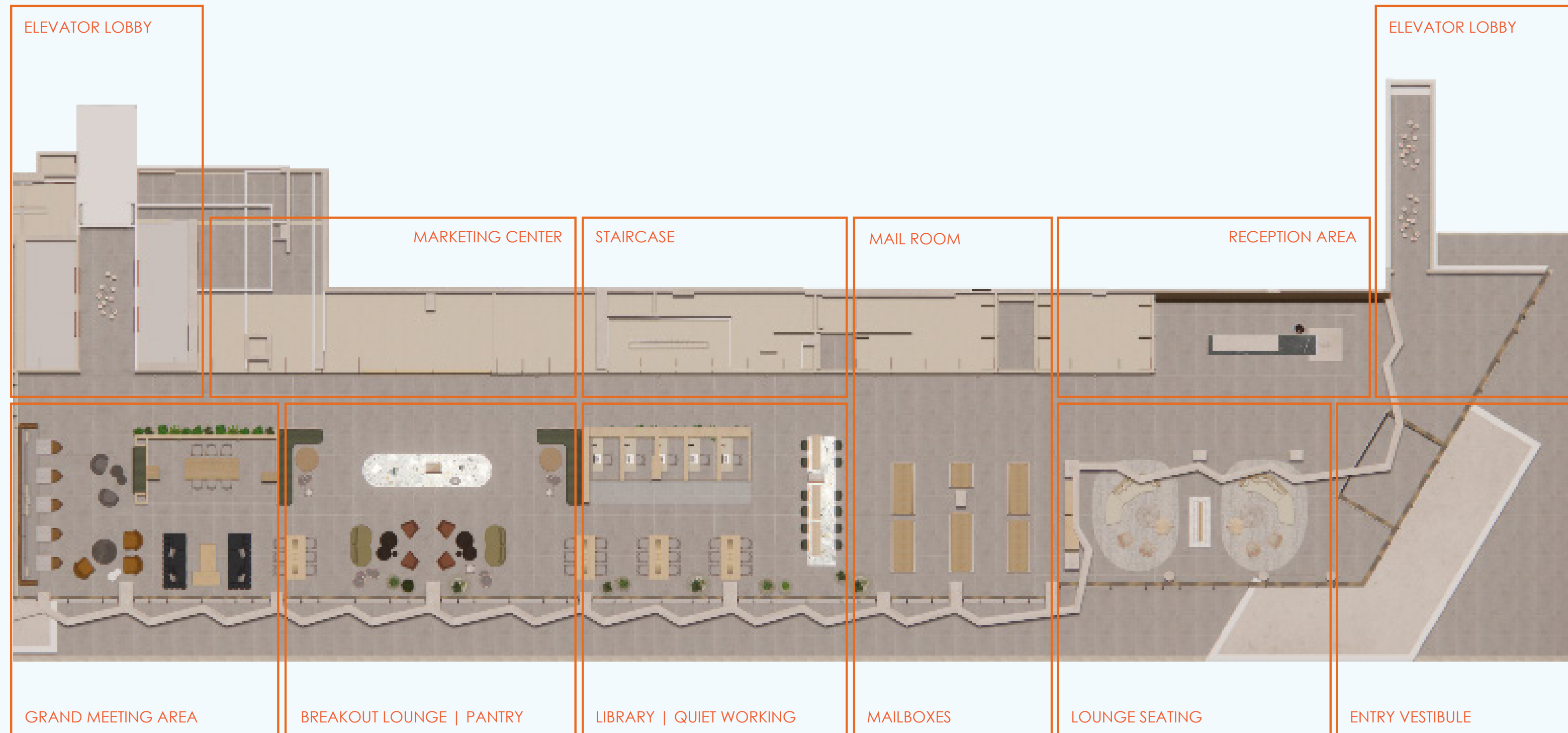
This upscale waterfront apartment complex is aimed at a target group of young professionals between 25 - 45 years of age. Market research predicts a 75% asian customer group. Mostly singles with pets and young families.

The buildings lobby serves a multitude of purposes from classic reception desk to mail room and mailboxes, co-work spaces and single work-booths, meeting areas, marketing center and public pantry.

The conceptual approach was to generate a contemporary clean look that will stand the ravages of time while incorporating a modern, western interpretation of asian zen styles.

RESIDENTIAL LOBBY

Floor Plan | Ground Floor



This lobby serves a multitude of functionalities. Upon entering from the southeast vestibule, visitors and residents are greeted by the reception desk and casual luxury waiting area.

Progressing down the corridor one passes the freestanding mailboxes opposite of the packaging room.

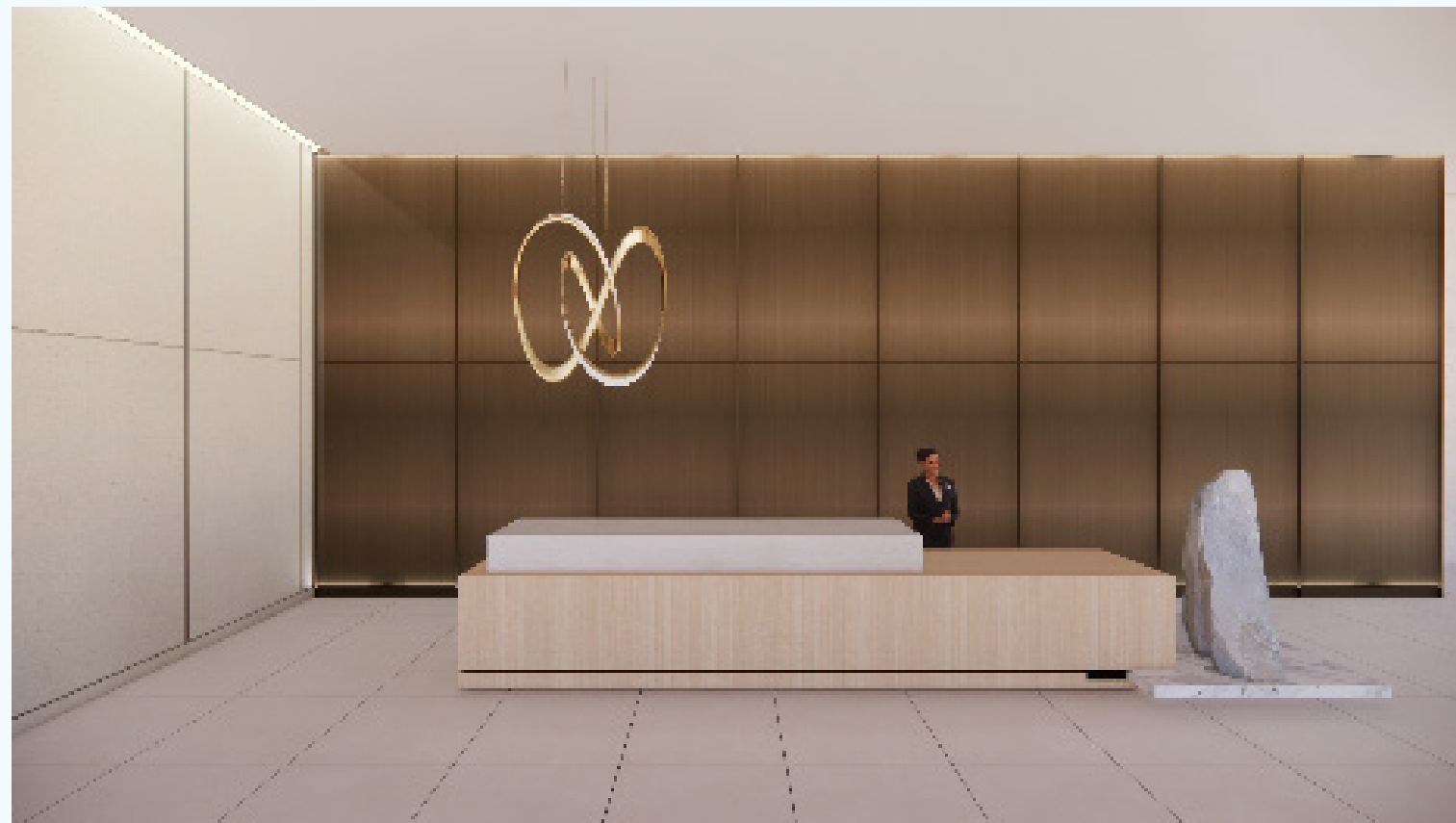
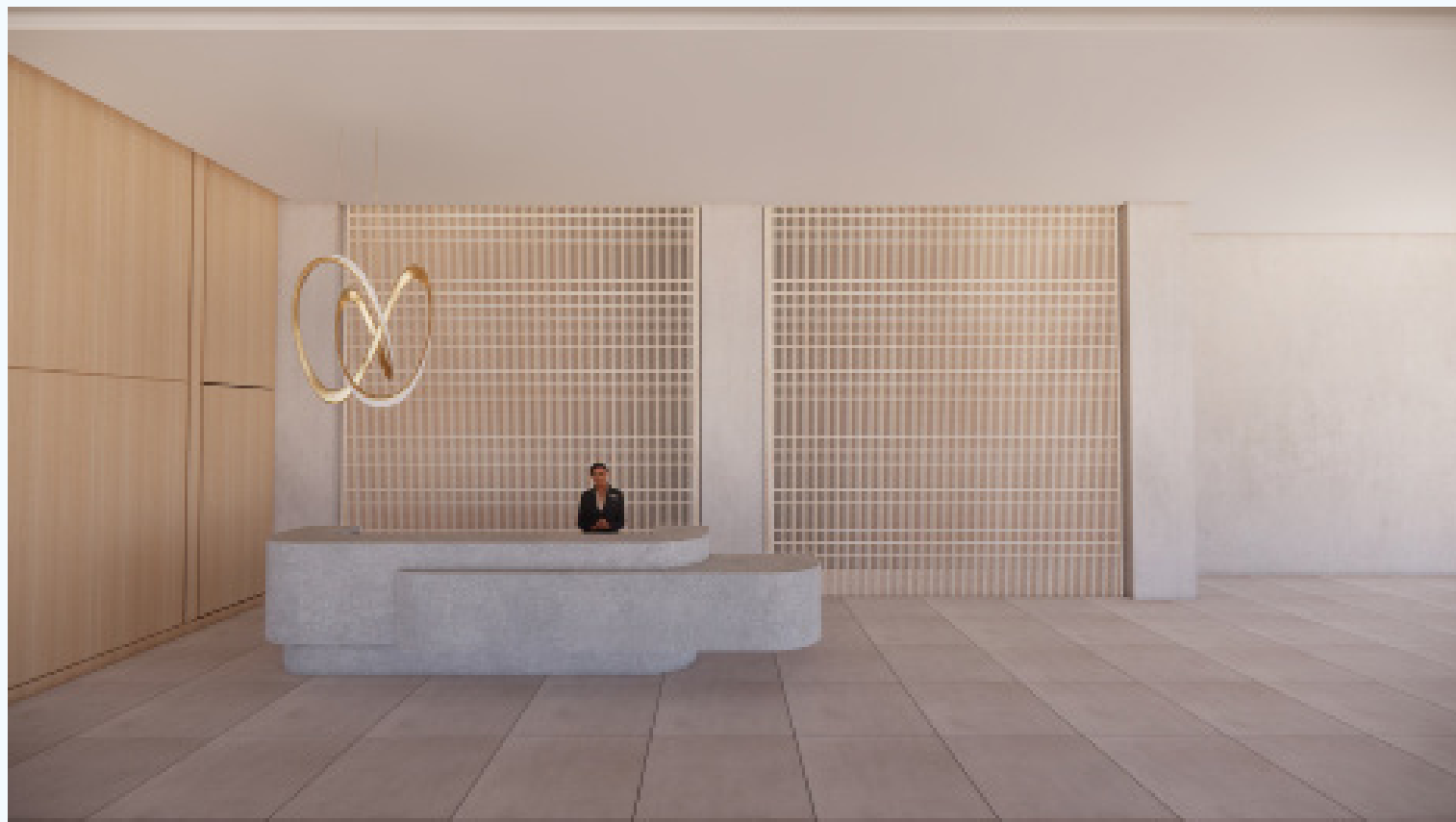
A high table with above floating shelves provides a visual barrier to the adjacent library and single work booths stations.

Opposite the marketing center a vast open space with casual lounge seating and cafe pantry are flanked by built in seating arrangements.

A large conference room and oversized banquette are located at the end of the hall, in front of the elevator lobby.

RESIDENTIAL LOBBY

Reception Desk Studies



This clients requirments were to create a hospitality reception desk that looks and feels luxurious and delivers a sense of home-coming while providing an elegantly effortless design.

Four options with slightly different approaches were designed to narrow down the clients direction.

As much as shapes were a strong focus, attention to detail was invested in finding the best fitting material for this project while staying within a light-warm color palett.



RESIDENTIAL LOBBY
Rendered Sketches





Residential Lobby

Library | Workstations



ATLAS BLOCK

Le Cuisinier Impérial | Fine Dining Restaurant

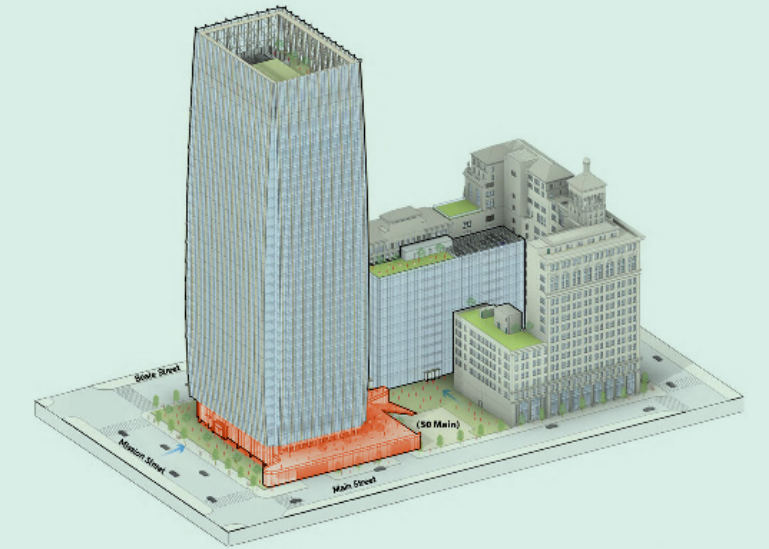
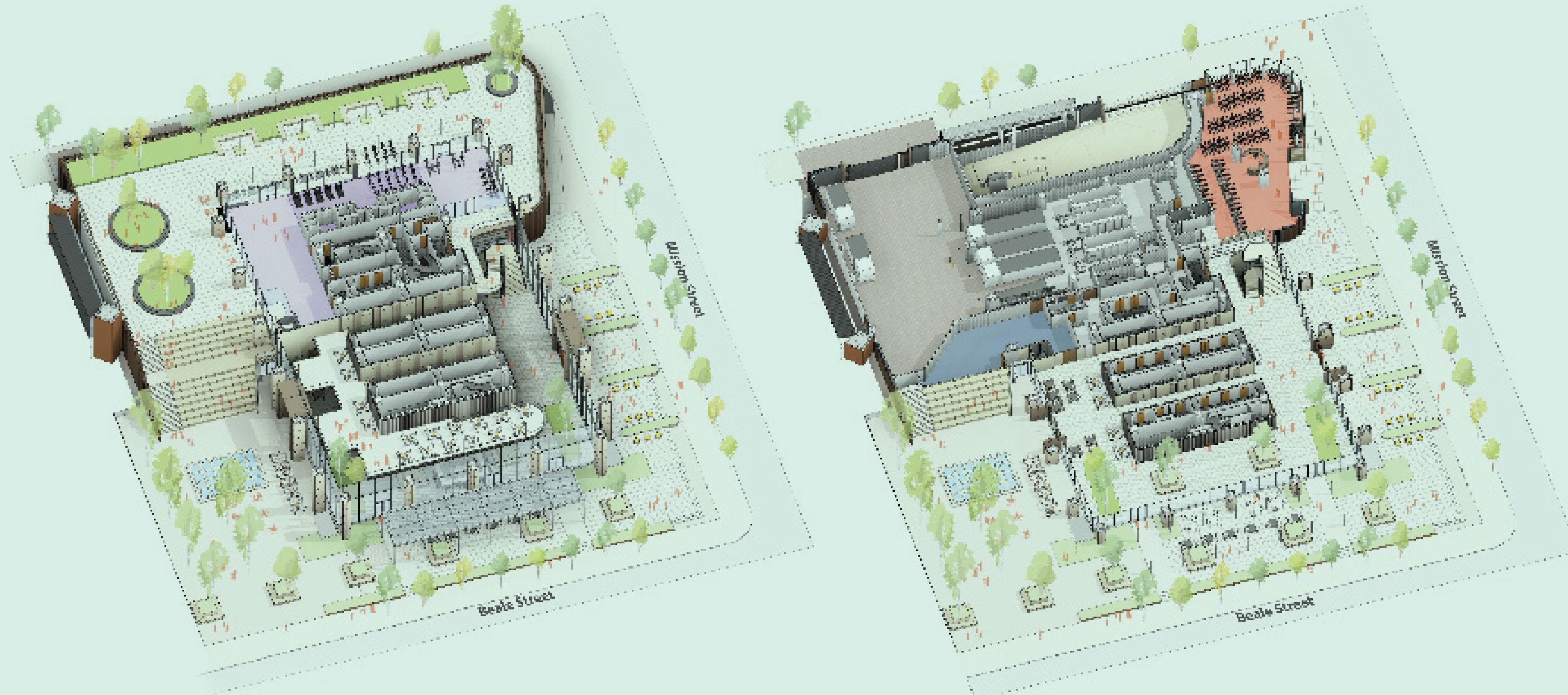
Atlas Block is situated within San Francisco's Financial District on Market Street. It is the main artery which runs across town right from the historic Ferry Building.

Pacific Gas & Electric was the former tenant on this block, running their business out of the beautiful turn of the century pre-war buildings that are laden with ornaments and stucco in classic historic style.

A respectful dialog between the existing and new structures was aimed at to celebrate traditional values as much as contemporary progress.

ATLAS BLOCK

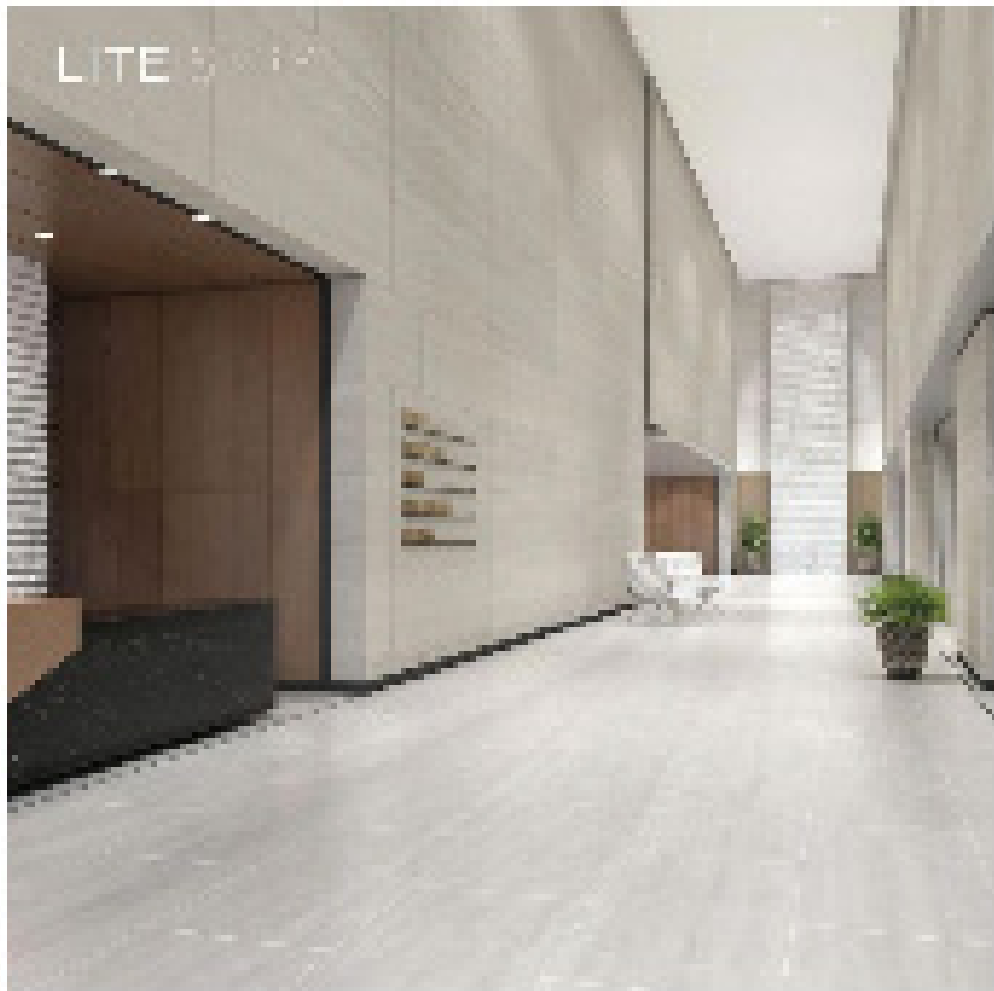
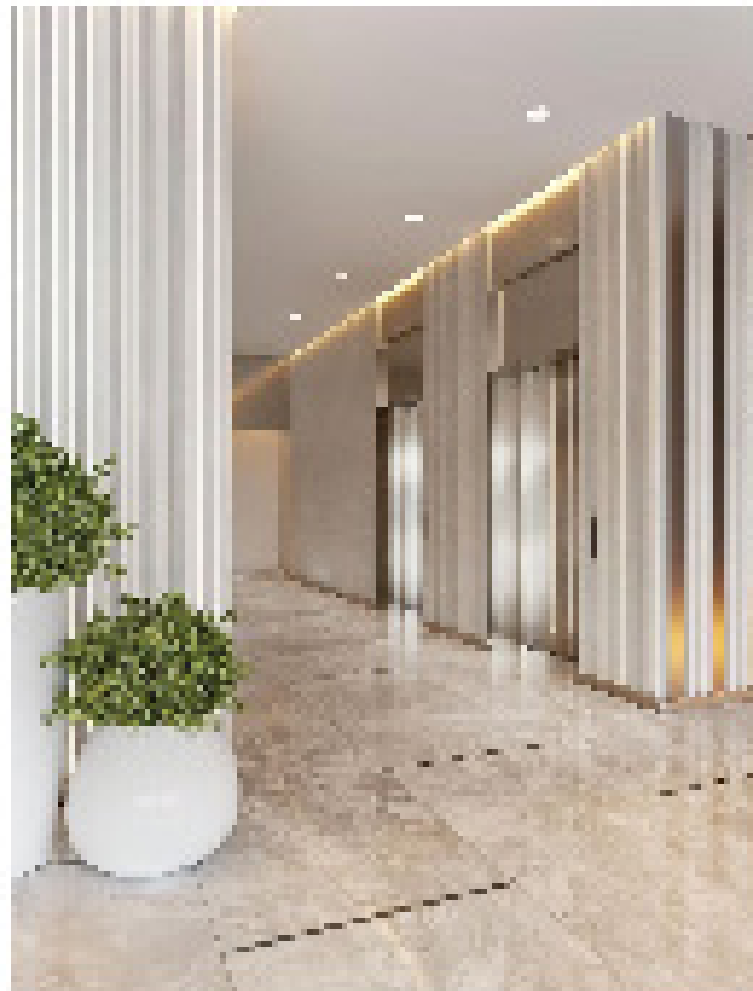
Axonometric Projection | 1st Floor & Mezzanine



The high-rise on 200 Mission St. was planned to host a predominantly commercial use.

In the ground floor lobby of this office building complex, the investor planned for a fine dining restaurant that can function for private dinner parties and upscale dining as well as for convenient lunches during the daytime.

The clients requirements were solved by introducing a mezzanine level into the 30 feet high ground floor lobby.

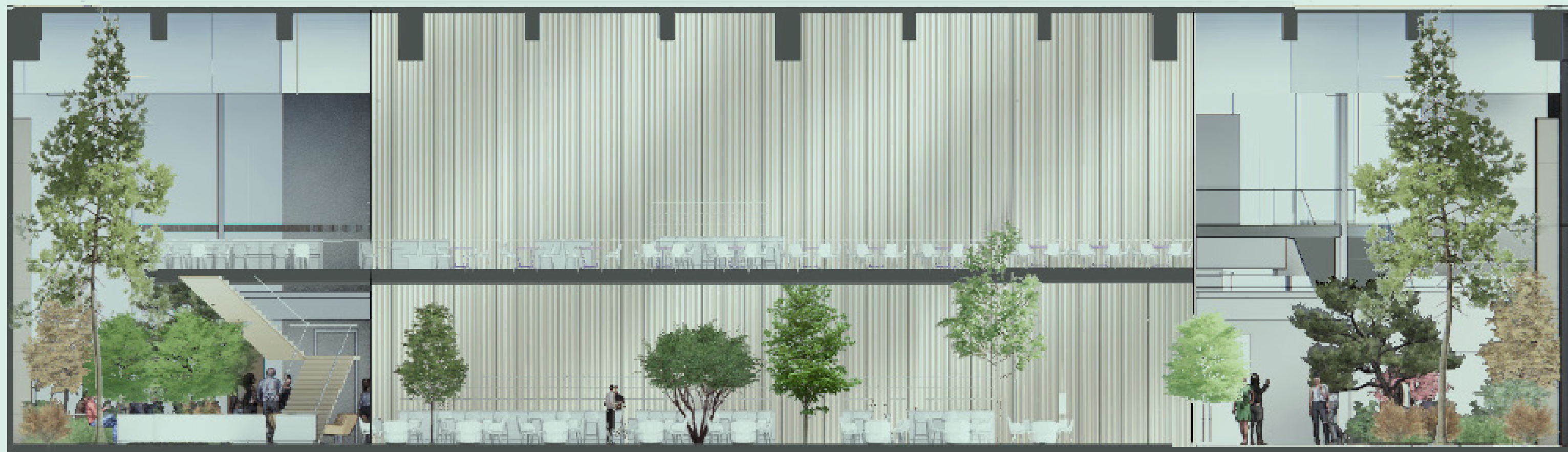


ATLAS BLOCK
Lobby Concept
Mood Images

ATLAS BLOCK
Restaurant Concept
Mood Images



ATLAS BLOCK
Elevation | Ground Floor Lobby

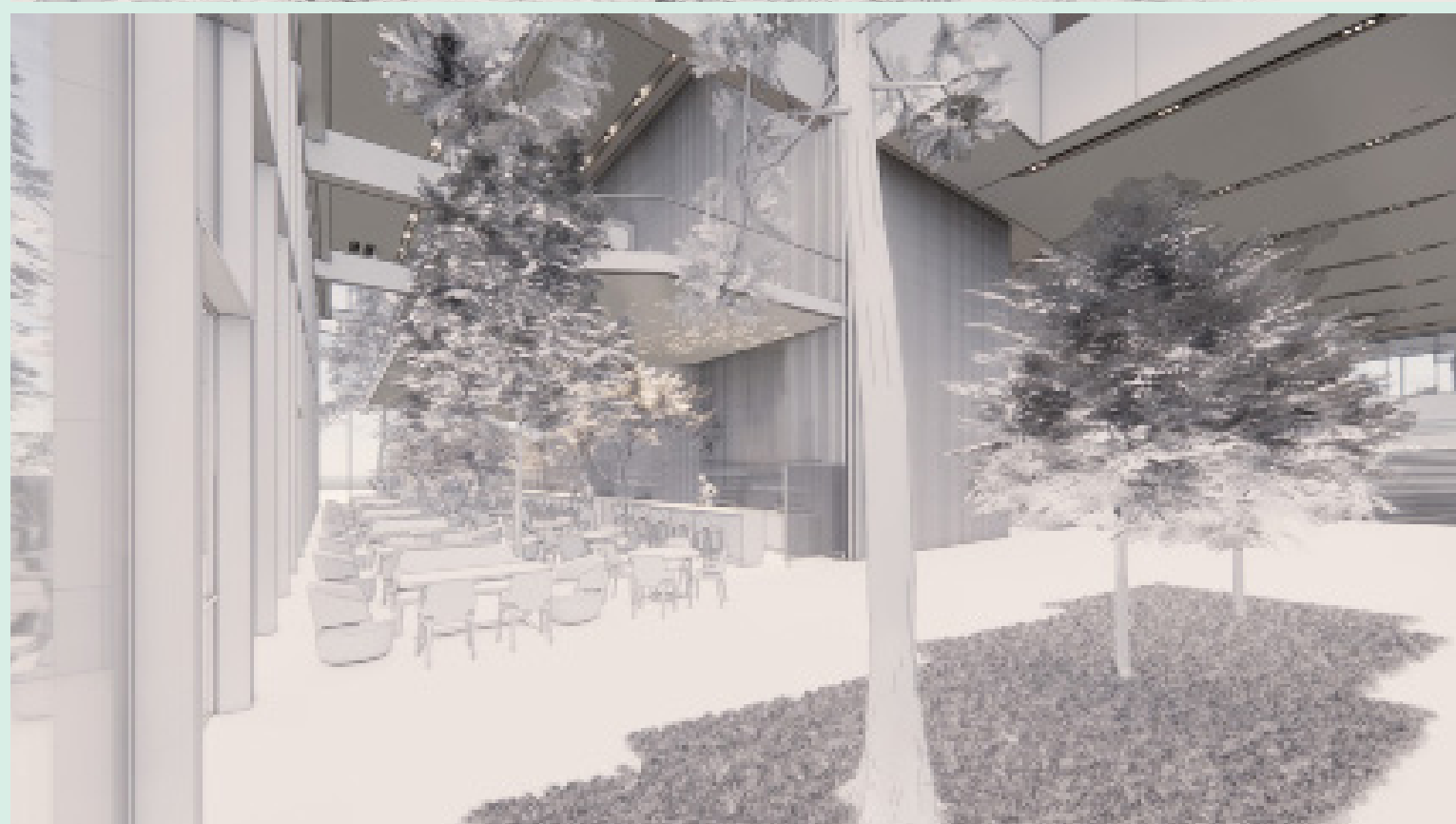


This elevation shows the South facing view of the restaurant.

While the mezzanine seating provides a more private atmosphere for fine dining and private events, the ground floor caters during lunch hours as well as evening dinners.

A staircase connects the ground floor to the floating mezzanine level that allows treetop views to the level below and the surrounding park.

ATLAS BLOCK
Perspective Clay Renderings





ATLAS BLOCK

Le Cuisinier Imperial
Fine Dining Restaurant



POOLSIDE

Royal Poinciana South Miami - Exterior Patio

Welcome to Royal Poinciana South. Your getaway to Paradise in a luxurious and exclusive apartment home community in Palm Beach, FL.

With its iconic art deco architecture, modern, upscale finishes, state of the art furniture and installations, this complex offers the ultimate experience in luxury living on a private island.

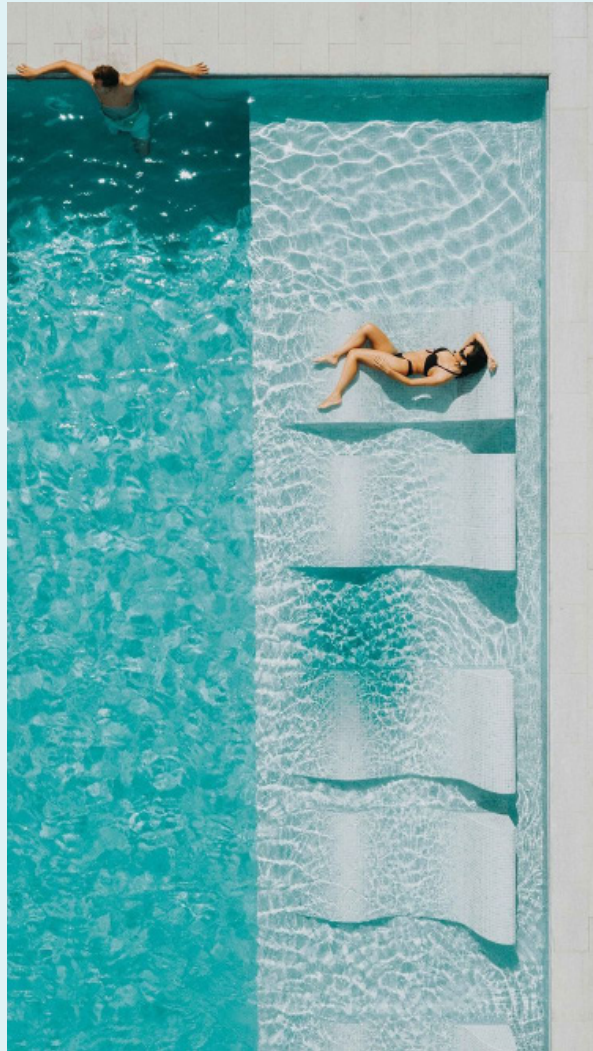
The complex features a wealth of amenities and breathtaking views. One of it's highlights is the outdoor patio with pool, cabanas, sun shading umbrellas, sun lounge chaises and intimate seating arrangements around open fire pits.

POOLSIDE PATIO Exterior Ground Floor Plan



The outdoor patio is adjacent to the buildings gym, fitness and yoga facilities.

A large swimming pool is located in the center of the courtyard. Luxurious day-beds, chaises and open fire pits surround the pool area to comfort guests and residents alike while they seek shelter under the lush sunshades.



CONCEPT DETAILS
Concept Imagery
Mood Board



TUCCI
TEAK UMBRELLA
OCEAN MASTER MAX



GANDIA BLASCO
CHAISE LOUNGE
TIMELESS



RH
DAYBED
AVIARA



RH
LANTERN
TOULON



ATELIER VIERKANT
PLANTER
LG | XL



B&B ITALIA
ARMCHAIR
BAY



ECOSMART
FIREPIT
ARK 40



JANUS ET CIE
LOUNGE CHAIR
ANATRA

POOLSIDE
Perspective Renderings





Poolside

Royal Poinciana South
Exterior Patio



UWS TOWNHOUSE

GUT HOME RENOVATION

This beautiful turn of the century townhouse on one of the tranquil tree lined side alleys of the Upper West Side aims to bring a relaxing modern vibe into the interior.

A minimalistic contemporary approach is aimed at for this modern design option.

The focus is on a desaturated color palette that is friendly and bright to ease the mind through the absence of visual noise with clean linear geometry and minimal carefully curated design details that focus attention on custom designed eyecatchers.

UWS TOWNHOUSE
FLOOR PLAN | GROUND FLOOR | OPTION 1







UWS TOWNHOUSE
ARCHITECTURAL FINISHES | OPTION 1





UWS TOWNHOUSE
LIVING ROOM BOOKSHELF WALL PERSPECTIVE | OPTION 1







UWS TOWN- HOUSE

Contemporary Residential



GRAND GENEVA RESORT

NATURE FOCUSSED RESORT HOTEL

This 1976 German founded luxury fashion house is bringing two new fragrances to the international luxury retail market.

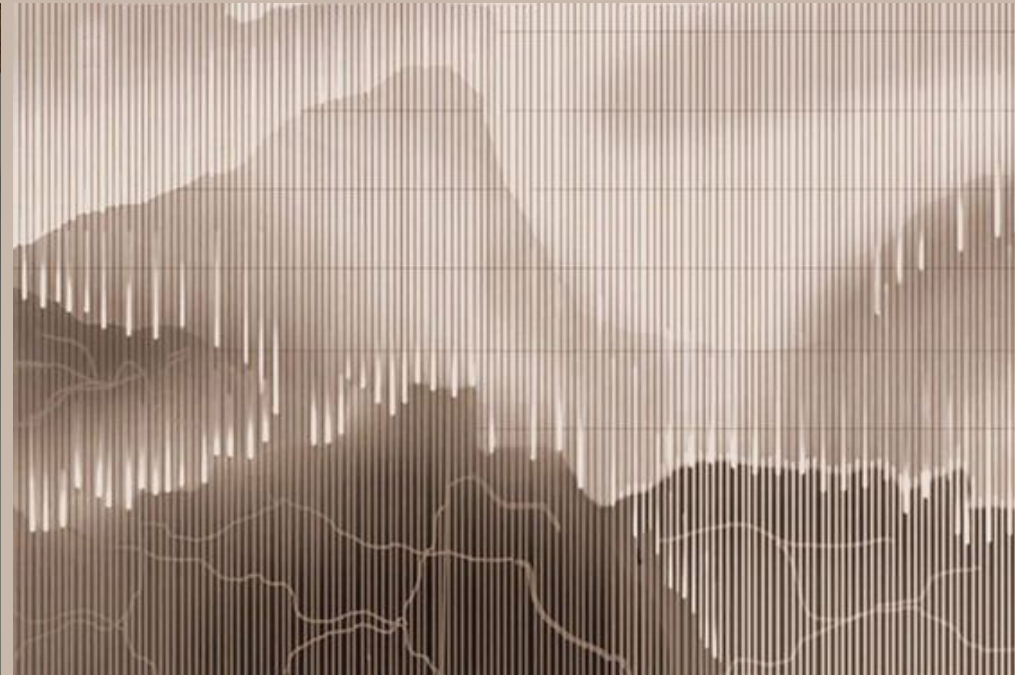
The assignment was to capture the target groups (female 22 - 36 and male 28 - 39) attention and educate them about the core brand values, as well as the highlights of the newly released merchandise.

Based on the animal head themed flacons, the concept was inspired to explore a playful direction that lends excitement from outdoor fairgrounds, playgrounds, theme parks and young adult entertainment that has the ability to capture an international audience.

GRAND GENEVA RESORT
Floor Plan - Double Queen



GRAND GENEVA RESORT
Inspirational Moods



GRAND GENEVA RESORT

Architectural Finishes







GRAND GENEVA RESORT
Alternative Perspectives





GRAND GENEVA RESORT

DOUBLE QUEEN ROOM



THE EMERY ROTH

Contemporary Residential Apartment

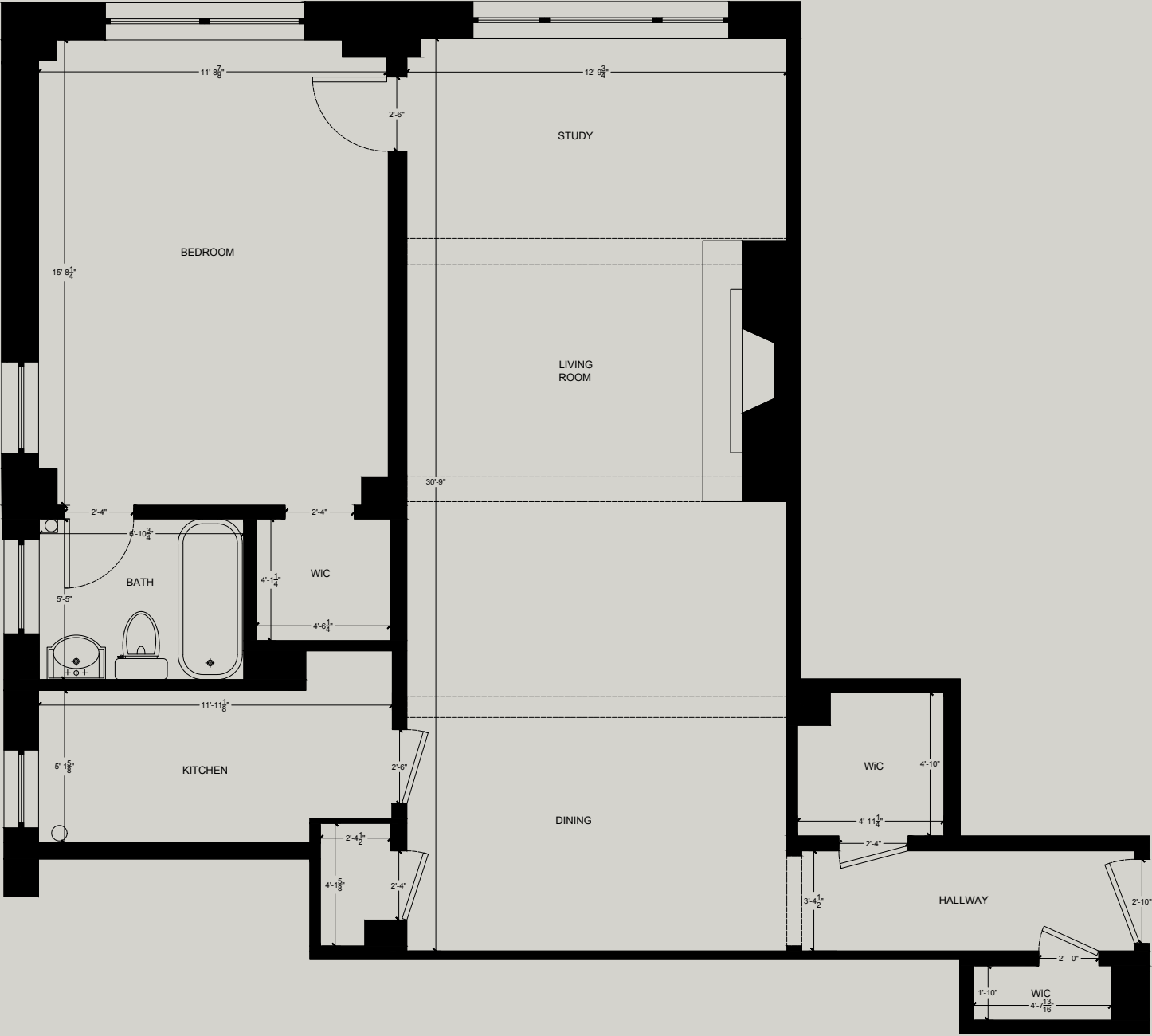
During the height of Emery Roth's architectural career in the 1920's and 1930's, he designed a plethora of NYC based hotels and residential apartment buildings. The Emery Roth in NYC's Rose Hill district was completed in 1931.

The majestic 'great room' reaches over 30 ft into the core of the building where natural light becomes scarce.

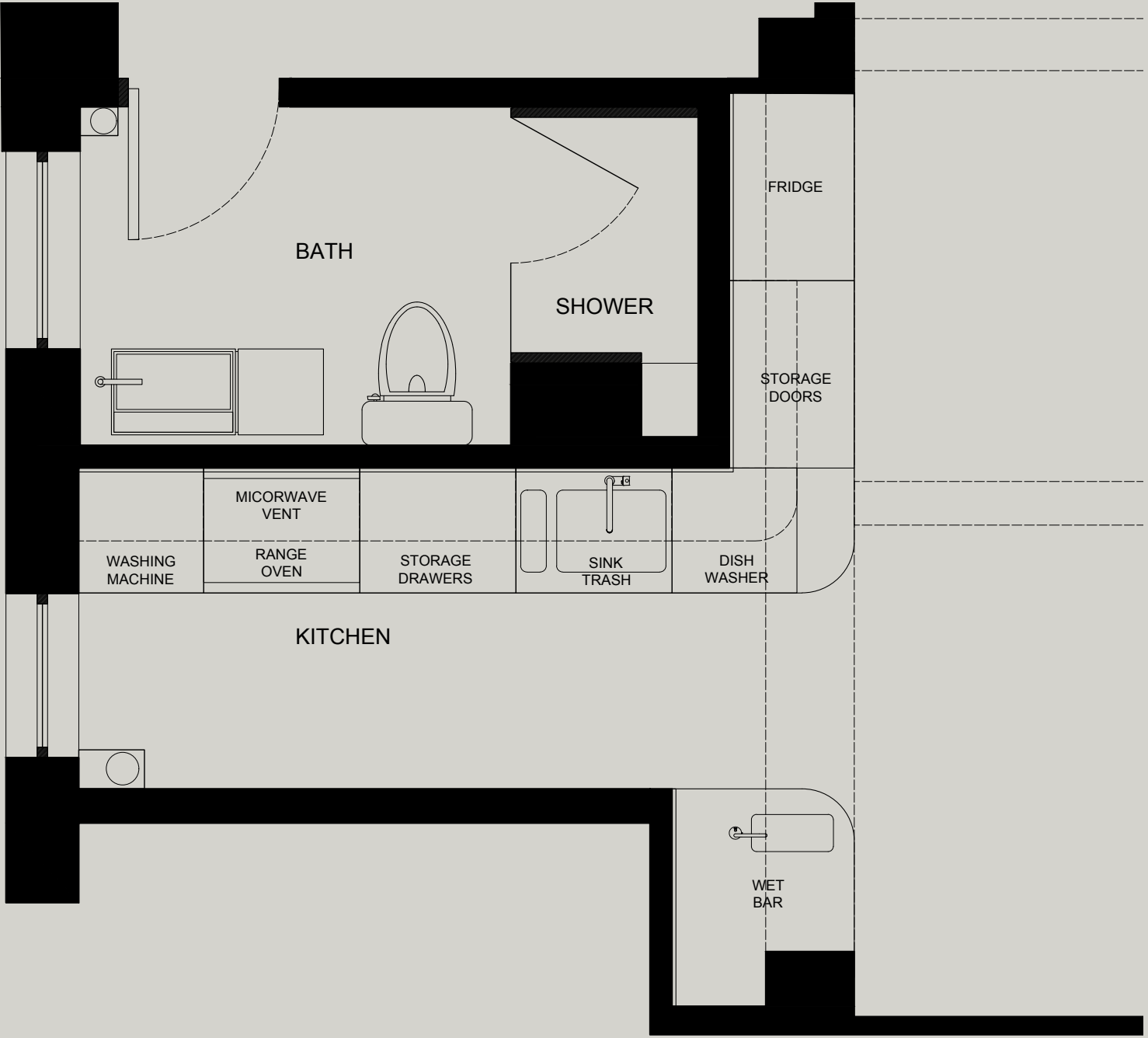
The challenge with this gut-renovation was to bring natural light into the depth and core of the dwelling.

By opening up the floor-plan and integrating the kitchen into the dining area, natural light can flow through the side windows into the heart of the dining room, bar and kitchen.

THE EMERY ROTH
Contemporary Residential Apartment



① FLOOR PLAN - EXISTING CONDITIONS #10B
SCALE: 3/4" = 1'-0"



② FLOOR PLAN - NEW DEVELOPMENT #10B
SCALE: 3/4" = 1'-0"

The dining area acts as the heart of this dwelling with the double function of greeting habitants when they enter the home.

Opening up the floor plan to enlarge the kitchen enables the passageway of light to travel into the darker corners of the dining are and allows for extended views over the cities skyline.

THE EMERY ROTH
Perspectives & Material Palette



THE EMERY ROTH
Concept Moods | Bathroom Perspective



CONCEPTUAL MOOD IMAGES



BATHROOM RENDERING



THE EMERY ROTH

Contemporary Residential



THE MORROW

Hotel Suite | Bedroom & Bath

The Morrow Hotel is the latest newcomer in Washington D.C.'s former industrial district and therefore just steps away from the bustling NoMa neighborhood.

The rising sun, the sun at mid-day and the half moon form this hotel brands logo. These natural circular elements informed the design language for this hotel concept.

The color pallet with its natural light warm tones contrast the cool blue and grey green hues that dominate focal points.

THE MORROW
Hotel Suite & Bath

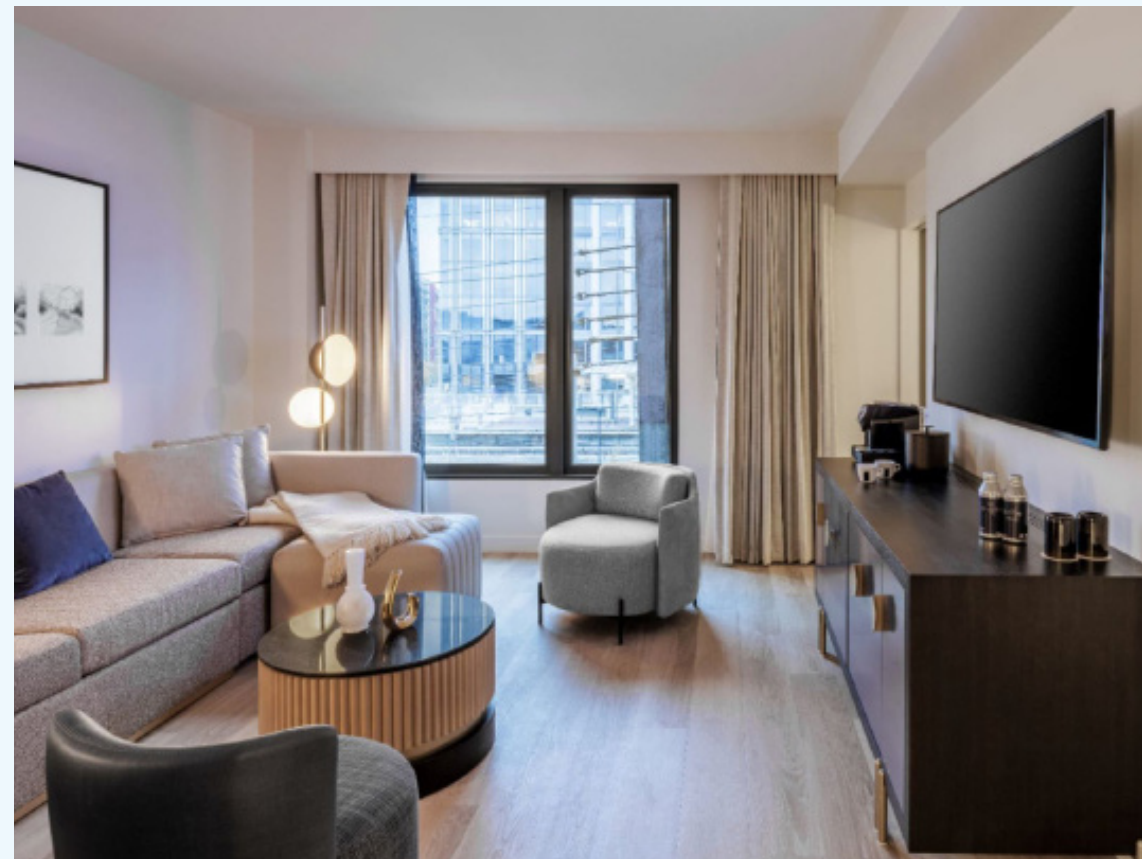


The most gracious standard Suite offers a beautifully designed living space, a king bed, master bathroom with walk in shower and bath tub, half bath, a dedicated wet bar and a comfortable seating area with stunning city views.

THE MORROW
Concept & Mood Imagery



THE MORROW
Photos of Realized Project
Bedroom | Suite





CONCEPTUAL MOOD IMAGES

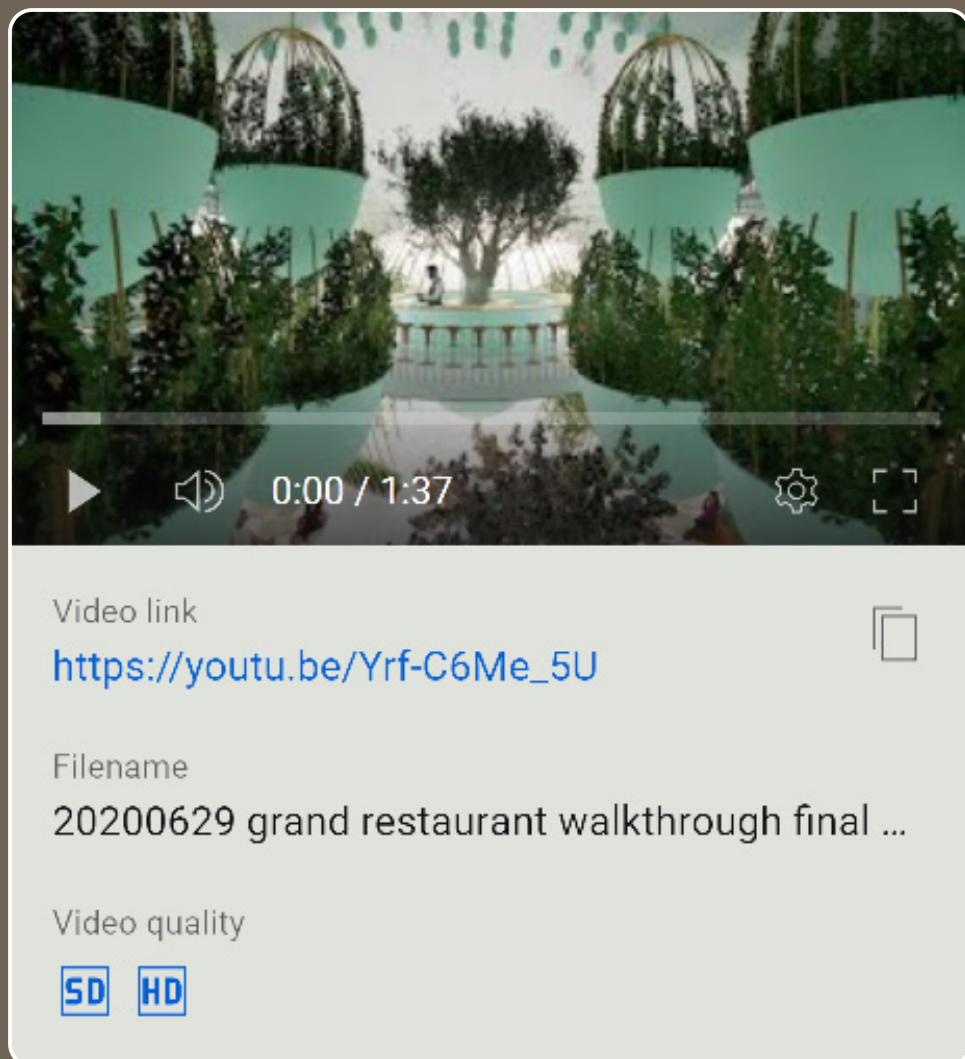


FINAL BATHROOM RENDERING

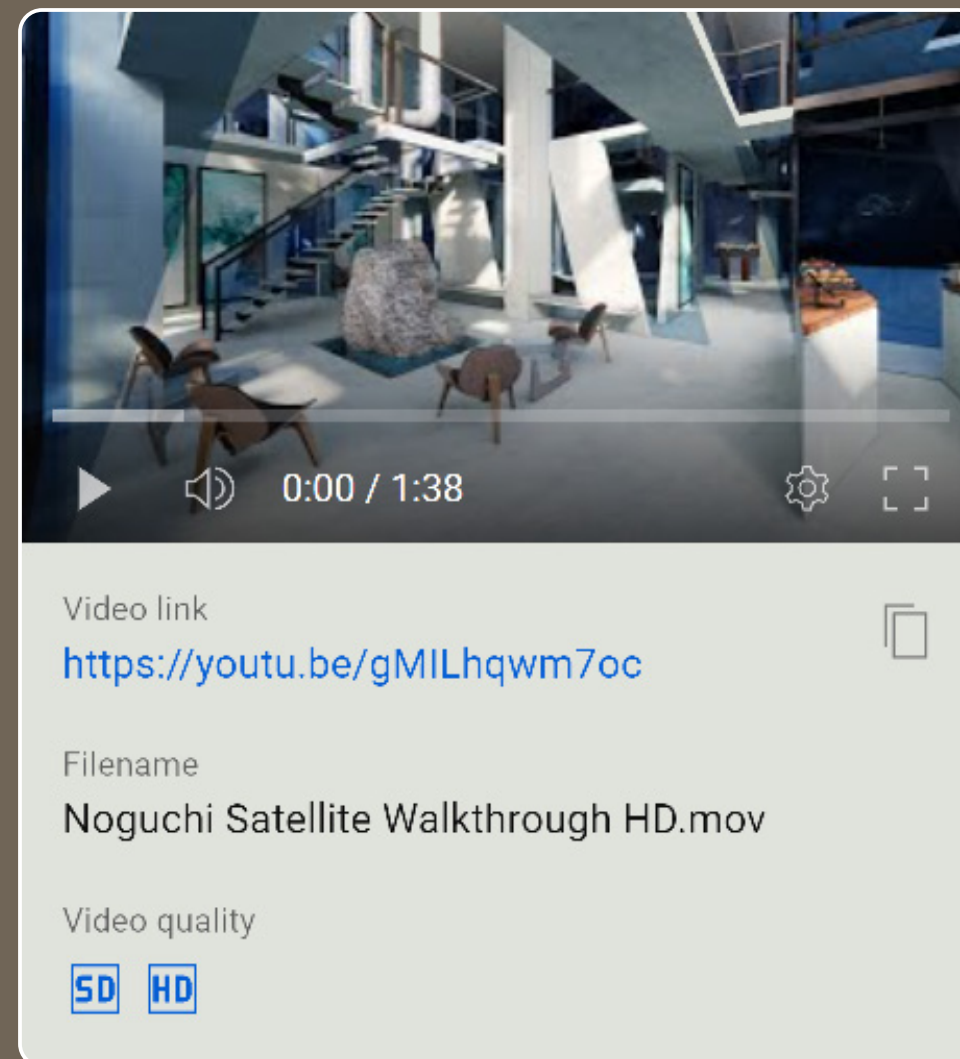


THE MORROW

Bedroom Suite



https://youtu.be/Yrf-C6Me_5U



<https://youtu.be/gMILhqwm7oc>

WALK THROUGH

Short Clips