

German Wirehaired Pointer

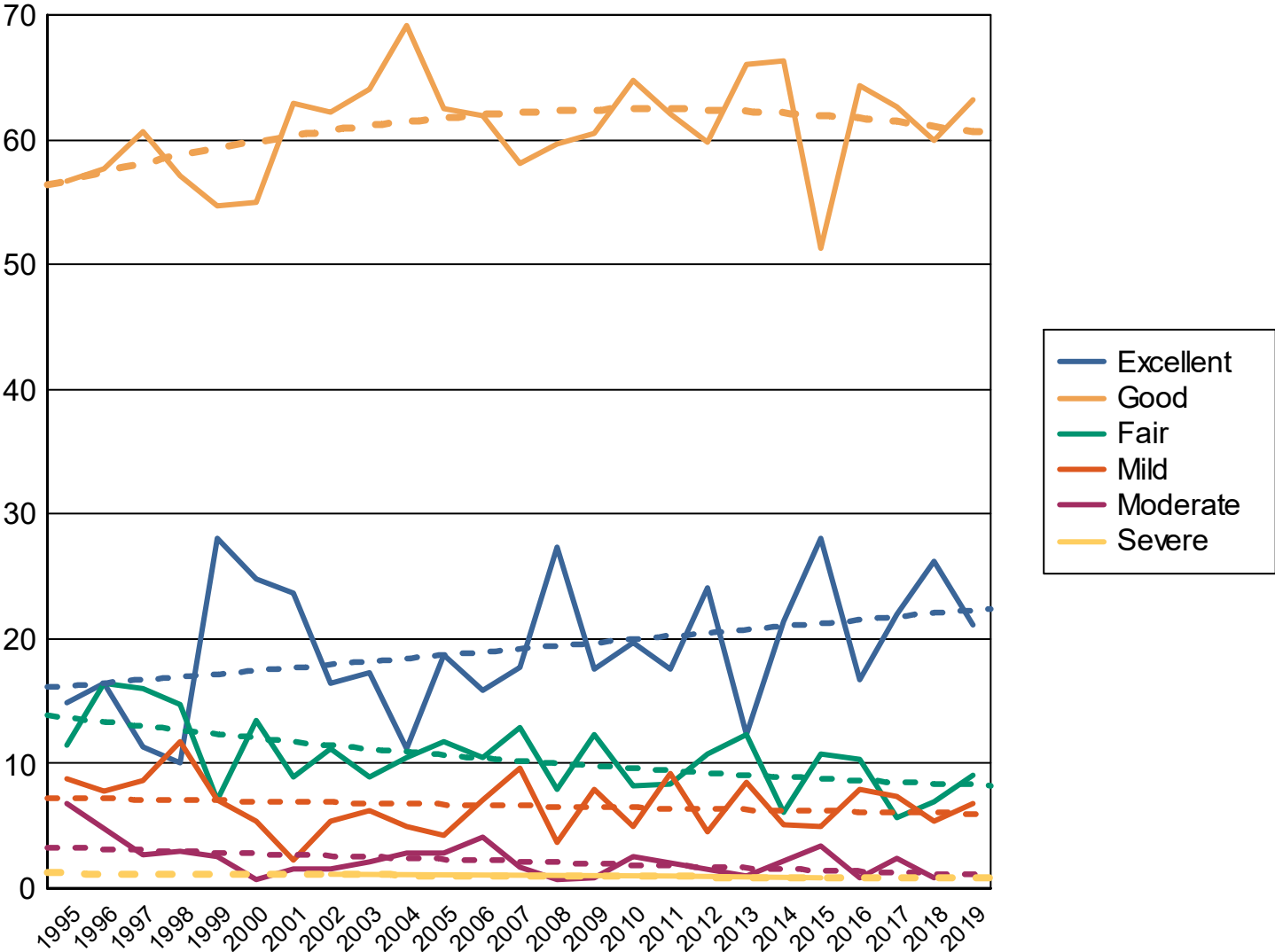
All data as of Dec-31-2021

*Dysplastic rank, all
breeds with more
than 100 cases*

		<i>Normals</i>		<i>Equivocal or Carrier</i>		<i>Abnormal</i>	
Hips	124 of 196	4741	90.27%	47	0.89%	464	8.83%
Elbow	89 of 138	1441	96.58%	3	0.20%	48	3.22%
Congenital Cardiac		328	98.80%	2	0.60%	2	0.60%
Thyroid		1043	79.68%	139	10.62%	127	9.70%
Spine		2	6.06%	0		31	93.94%
OFA EYE Registry		491	98.99%	0		5	1.01%
Advanced Cardiac		166	98.81%	0		2	1.19%
Patella		24	100.00%	0		0	
Mizzou Biomarker Study		1	100.00%	0		0	
Dentition Database		14	100.00%	0		0	
Von Willebrands		133	99.25%	1	0.75%	0	
Hemophilia B		1	100.00%	0		0	
Degenerative Myelopathy		22	95.65%	0		1	4.35%
Von Willebrands Cornell Blood Assa		3	100.00%	0		0	
Factor Vii Deficiency		6	100.00%	0		0	
Basic Cardiac		60	100.00%	0		0	
Shoulder		7	87.50%	0		1	12.50%
Exercise Induced Collapse		23	100.00%	0		0	

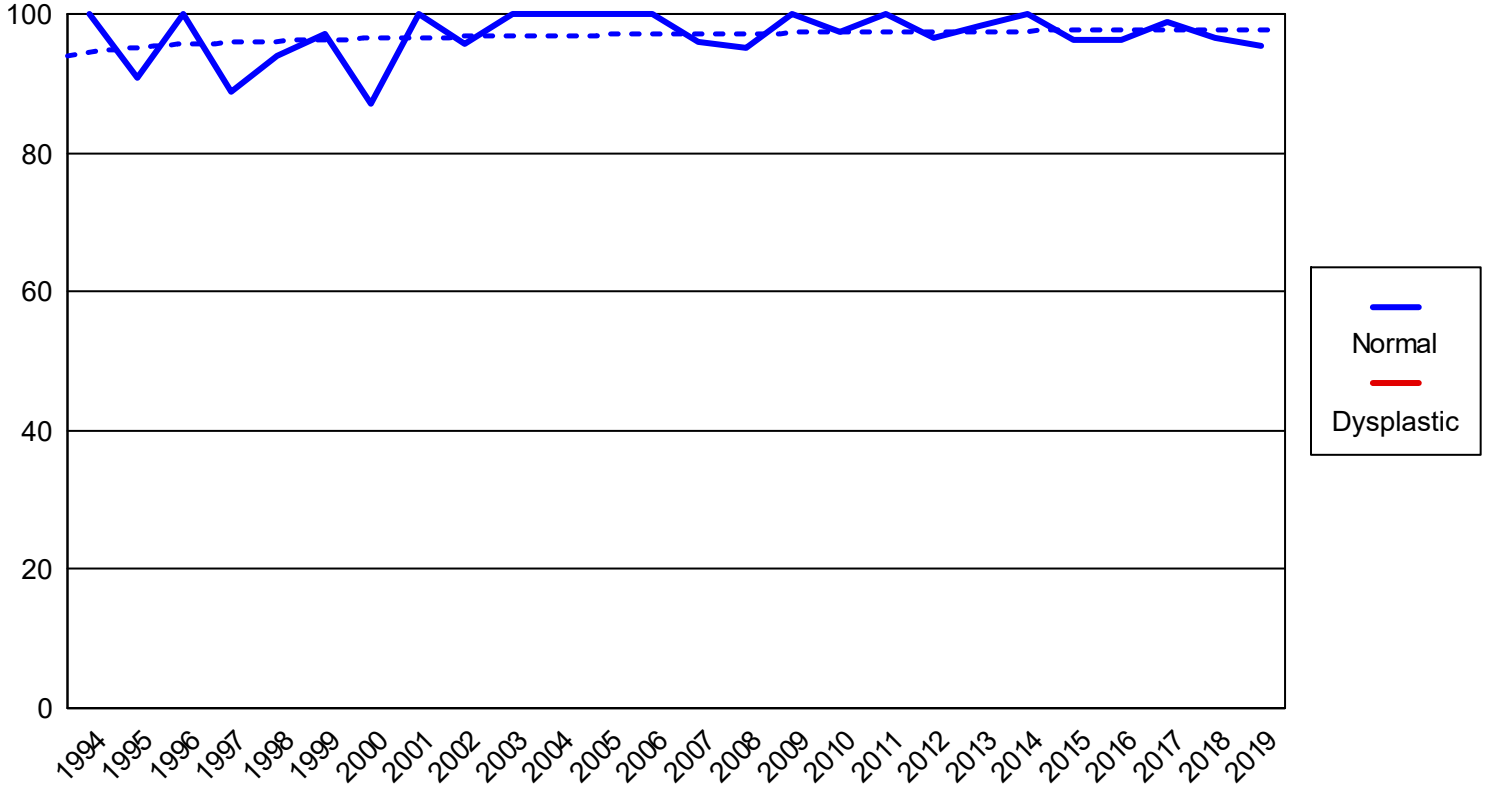
GERMAN WIREHAURED POINTER

Hip percentages by rating with trendlines

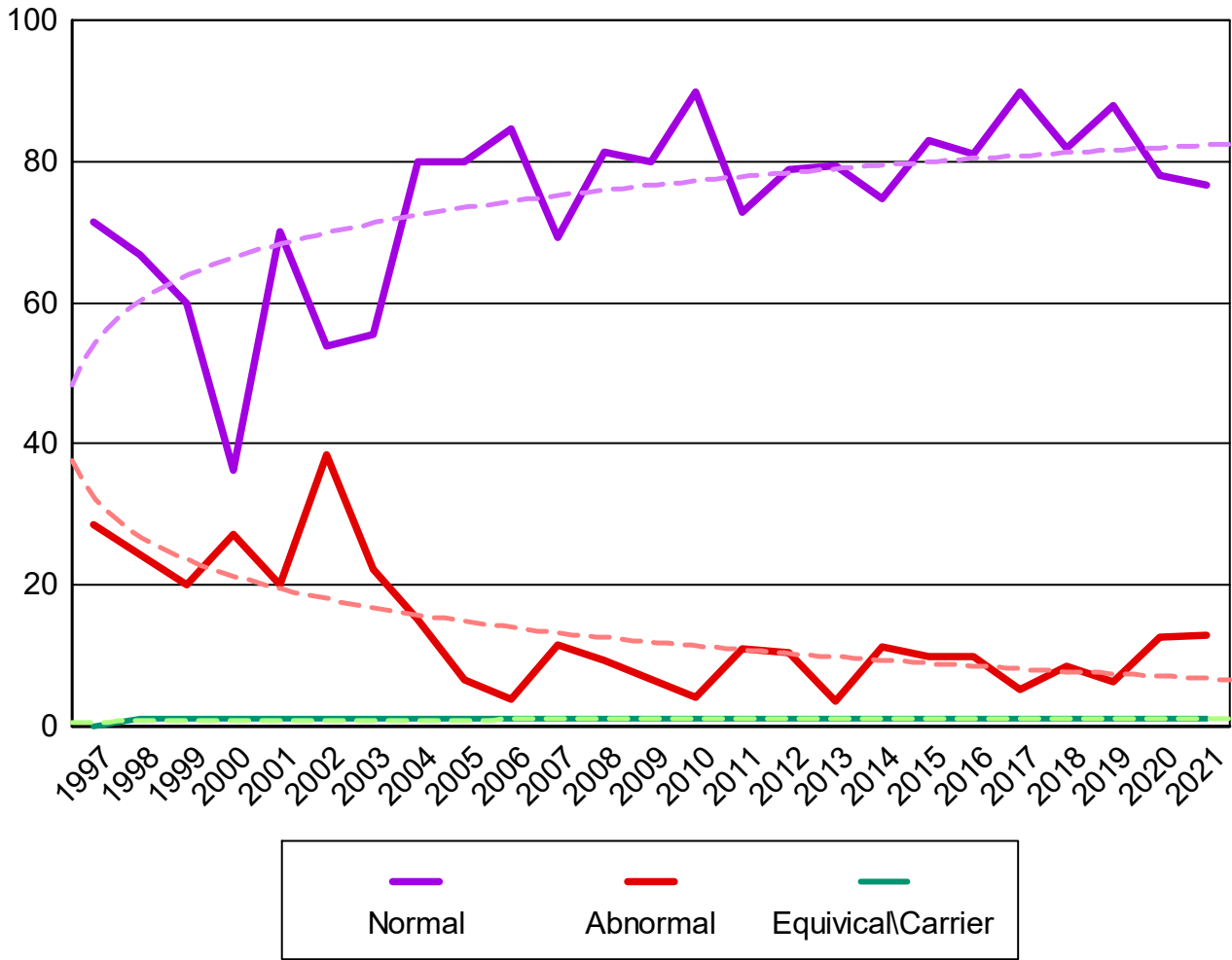


GERMAN WIREHAIED POINTER

Elbow percentages by rating with trendlines



THYROID



Percent submitted to the open registry
Hips

Report year	Cases	Excellent %	Good %	Fair %	Borderline %	Mild %	Moderate %	Severe %
1974	35	7 20.00%	25 71.43%	2 5.71%	0	0	1 2.86%	0
1975	40	5 12.50%	20 50.00%	8 20.00%	1 2.50%	4 10.00%	2 5.00%	0
1976	62	14 22.58%	41 66.13%	4 6.45%	0	1 1.61%	2 3.23%	0
1977	37	8 21.62%	22 59.46%	6 16.22%	0	0	1 2.70%	0
1978	50	8 16.00%	35 70.00%	1 2.00%	1 2.00%	2 4.00%	2 4.00%	1 2.00%
1979	47	5 10.64%	33 70.21%	5 10.64%	0	2 4.26%	2 4.26%	0
1980	49	5 10.20%	32 65.31%	7 14.29%	0	2 4.08%	3 6.12%	0
1981	49	6 12.24%	30 61.22%	7 14.29%	0	3 6.12%	2 4.08%	1 2.04%
1982	72	9 12.50%	47 65.28%	8 11.11%	0	4 5.56%	4 5.56%	0
1983	80	9 11.25%	53 66.25%	9 11.25%	0	5 6.25%	4 5.00%	0
1984	66	5 7.58%	39 59.09%	18 27.27%	0	2 3.03%	2 3.03%	0
1985	55	8 14.55%	31 56.36%	8 14.55%	0	5 9.09%	3 5.45%	0
1986	79	6 7.59%	51 64.56%	17 21.52%	0	2 2.53%	3 3.80%	0
1987	75	7 9.33%	46 61.33%	10 13.33%	1 1.33%	7 9.33%	4 5.33%	0
1988	70	8 11.43%	45 64.29%	5 7.14%	0	9 12.86%	3 4.29%	0
1989	88	17 19.32%	47 53.41%	15 17.05%	1 1.14%	5 5.68%	2 2.27%	1 1.14%
1990	100	14 14.00%	66 66.00%	14 14.00%	0	4 4.00%	2 2.00%	0
1991	113	18 15.79%	73 64.04%	11 9.65%	1 0.88%	6 5.26%	4 3.51%	0
1992	126	17 13.39%	67 52.76%	29 22.83%	2 1.57%	9 7.09%	2 1.57%	0
1993	108	15 13.89%	63 58.33%	14 12.96%	5 4.63%	6 5.56%	5 4.63%	0
1994	132	27 20.30%	87 65.41%	12 9.02%	1 0.75%	4 3.01%	1 0.75%	0
1995	148	22 14.86%	84 56.76%	17 11.49%	2 1.35%	13 8.78%	10 6.76%	0

Percent submitted to the open registry

Hips

Report year	Cases	Excellent %	Good %	Fair %	Borderline %	Mild %	Moderate %	Severe %
1996	116	19 16.38%	67 57.76%	19 16.38%	2 1.72%	9 7.76%	0	0
1997	150	17 11.33%	91 60.67%	24 16.00%	1 0.67%	13 8.67%	4 2.67%	0
1998	169	17 10.00%	97 57.06%	25 14.71%	5 2.94%	20 11.76%	5 2.94%	0
1999	157	44 28.03%	86 54.78%	11 7.01%	1 0.64%	11 7.01%	4 2.55%	0
2000	149	37 24.83%	82 55.03%	20 13.42%	1 0.67%	8 5.37%	1 0.67%	0
2001	135	32 23.70%	85 62.96%	12 8.89%	1 0.74%	3 2.22%	2 1.48%	0
2002	188	31 16.49%	117 62.23%	21 11.17%	4 2.13%	10 5.32%	3 1.60%	2 1.06%
2003	145	25 17.24%	93 64.14%	13 8.97%	2 1.38%	9 6.21%	3 2.07%	0
2004	143	16 11.19%	99 69.23%	15 10.49%	2 1.40%	7 4.90%	4 2.80%	0
2005	144	27 18.75%	90 62.50%	17 11.81%	0	6 4.17%	4 2.78%	0
2006	171	27 15.79%	106 61.99%	18 10.53%	1 0.58%	12 7.02%	7 4.09%	0
2007	124	22 17.74%	72 58.06%	16 12.90%	0	12 9.68%	2 1.61%	0
2008	139	38 27.34%	83 59.71%	11 7.91%	1 0.72%	5 3.60%	1 0.72%	0
2009	114	20 17.54%	69 60.53%	14 12.28%	1 0.88%	9 7.89%	1 0.88%	0
2010	122	24 19.67%	79 64.75%	10 8.20%	0	6 4.92%	3 2.46%	0
2011	108	19 17.59%	67 62.04%	9 8.33%	2 1.85%	10 9.26%	0	1 0.93%
2012	112	27 24.11%	67 59.82%	12 10.71%	1 0.89%	5 4.46%	0	0
2013	106	13 12.26%	70 66.04%	13 12.26%	0	9 8.49%	1 0.94%	0
2014	98	21 21.43%	65 66.33%	6 6.12%	1 1.02%	5 5.10%	0	0
2015	121	34 28.10%	62 51.24%	13 10.74%	1 0.83%	6 4.96%	4 3.31%	1 0.83%
2016	126	21 16.67%	81 64.29%	13 10.32%	0	10 7.94%	1 0.79%	0
2017	123	27 21.95%	77 62.60%	7 5.69%	0	9 7.32%	3 2.44%	0
2018	130	34 26.15%	78 60.00%	9 6.92%	1 0.77%	7 5.38%	1 0.77%	0

Percent submitted to the open registry
Hips

<i>Report year</i>	<i>Cases</i>	<i>Excellent</i> %	<i>Good</i> %	<i>Fair</i> %	<i>Borderline</i> %	<i>Mild</i> %	<i>Moderate</i> %	<i>Severe</i> %
2019	133	28	84	12	0	9	0	0
	23.31%	21.05%	63.16%	9.02%		6.77%		
2020	157	55	74	16	2	9	1	0
	24.84%	35.03%	47.13%	10.19%	1.27%	5.73%	0.64%	
2021	190	36	113	16	2	16	6	1
	32.12%	18.65%	58.55%	8.29%	1.04%	8.29%	3.11%	0.52%
Totals	5,251	951	3,191	599	47	330	125	8
		18.09%	60.69%	11.39%	0.89%	6.28%	2.38%	0.15%

Elbow

<i>Report Year</i>	<i>Cases</i>	<i>Normal %</i>	<i>Grade 1 %</i>	<i>Grade 2 %</i>	<i>Grade 3 %</i>	<i>Borderline %</i>
1990	2	2 100.00%				
1991	1	1 100.00%				
1992	4	3 75.00%	1 25.00%			
1993	6	6 100.00%				
1994	21	21 100.00%				
1995	11	10 90.91%				1 9.09%
1996	12	12 100.00%				
1997	27	24 88.89%	2 7.41%	1 3.70%		
1998	17	16 94.12%		1 5.88%		
1999	35	34 97.14%	1 2.86%			
2000	31	27 87.10%	4 12.90%			
2001	24	24 100.00%				
2002	24	23 95.83%				1 4.17%
2003	28	28 100.00%				
2004	28	28 100.00%				
2005	19	19 100.00%				
2006	42	42 100.00%				
2007	26	25 96.15%	1 3.85%			
2008	42	40 95.24%	2 4.76%			
2009	37	37 100.00%				
2010	77	75 97.40%	2 2.60%			

Elbow

<i>Report Year</i>	<i>Cases</i>	<i>Normal</i> <i>%</i>	<i>Grade 1</i> <i>%</i>	<i>Grade 2</i> <i>%</i>	<i>Grade 3</i> <i>%</i>	<i>Borderline</i> <i>%</i>
2011	53	53 100.00%				
2012	62	60 96.77%	2 3.23%			
2013	61	60 98.36%	1 1.64%			
2014	63	63 100.00%				
2015	84	81 96.43%	1 1.19%	2 2.38%		
2016	83	80 96.39%	2 2.41%	1 1.20%		
2017	91	90 98.90%	1 1.10%			
2018	88	85 96.59%	2 2.27%		1 1.14%	
2019	109	104 95.41%	3 2.75%	2 1.83%		
2020	126	115 91.27%	10 7.94%	1 0.79%		
2021	158	153 96.84%	4 2.53%			1 0.63%
Totals	1,492	1,441 96.58%	39 2.61%	8 0.54%	1 0.07%	3 0.20%

Advanced Cardiac

<i>Report year</i>	<i>Cases</i>	<i>Normal</i>	<i>% Normal</i>	<i>Abnormal</i>	<i>% Abnormal</i>	<i>Equivocal</i>	<i>% Equivocal</i>
German Wirehaired Pointer							
2016	20	20	100.0				
2017	37	37	100.0				
2018	34	33	97.1	1	2.9		
2019	39	39	100.0				
2020	22	22	100.0				
2021	16	15	93.8	1	6.3		
Totals	168	166	98.8	2	1.2		

Congenital Cardiac

<i>Report year</i>	<i>Cases</i>	<i>Normal</i>	<i>% Normal</i>	<i>Abnormal</i>	<i>% Abnormal</i>	<i>Equivocal</i>	<i>% Equivocal</i>
German Wirehaired Pointer							
1996	2	2	100.0				
1997	3	3	100.0				
2000	2	2	100.0				
2001	1	1	100.0				
2003	2	2	100.0				
2004	2	2	100.0				
2006	6	6	100.0				
2007	5	5	100.0				
2008	1	1	100.0				
2009	5	4	80.0	1	20.0		
2010	13	13	100.0				
2011	15	15	100.0				
2012	53	51	96.2	1	1.9	1	1.9
2013	25	24	96.0			1	4.0
2014	57	57	100.0				
2015	41	41	100.0				
2016	30	30	100.0				
2017	18	18	100.0				
2018	17	17	100.0				
2019	18	18	100.0				
2020	15	15	100.0				
Totals	331	327	98.8	2	0.6	2	0.6

Degenerative Myelopathy

<i>Report year</i>	<i>Cases</i>	<i>Normal</i>	<i>% Normal</i>	<i>Abnormal</i>	<i>% Abnormal</i>	<i>Carrier</i>	<i>% Carrier</i>
German Wirehaired Pointer							
2011	1	1	100.0				
2012	1	1	100.0				
2016	1	1	100.0				
2017	6	6	100.0				
2018	5	5	100.0				
2019	1	1	100.0				
2020	4	3	75.0	1	25.0		
2021	4	4	100.0				
Totals	23	22	95.7	1	4.4		

Dentition Database

<i>Report year</i>	<i>Cases</i>	<i>Normal</i>	<i>% Normal</i>	<i>Abnormal</i>	<i>% Abnormal</i>	<i>Carrier</i>	<i>% Carrier</i>
German Wirehaired Pointer							
2015	1	1	100.0				
2017	4	4	100.0				
2019	2	2	100.0				
2020	3	3	100.0				
2021	4	4	100.0				
Totals	14	14	100.0				

Exercise Induced Collapse

<i>Report year</i>	<i>Cases</i>	<i>Normal</i>	<i>% Normal</i>	<i>Abnormal</i>	<i>% Abnormal</i>	<i>Carrier</i>	<i>% Carrier</i>
German Wirehaired Pointer							
2013	1	1	100.0				
2014	1	1	100.0				
2017	4	4	100.0				
2018	5	5	100.0				
2019	2	2	100.0				
2020	4	4	100.0				
2021	6	6	100.0				
Totals	23	23	100.0				

Eyes

<i>Report year</i>	<i>Cases</i>	<i>Normal</i>	<i>% Normal</i>	<i>Abnormal</i>	<i>% Abnormal</i>	<i>Breeder opt.</i>	<i>% Breeder opt.</i>
German Wirehaired Pointer							
2012	3	3	100.0				
2013	25	24	96.0	1	4.0		
2014	54	52	96.3	1	1.9	1	1.9
2015	50	46	92.0			4	8.0
2016	70	66	94.3	1	1.4	3	4.3
2017	55	49	89.1			6	10.9
2018	51	48	94.1	1	2.0	2	3.9
2019	60	54	90.0			6	10.0
2020	52	48	92.3			4	7.7
2021	76	69	90.8	1	1.3	6	7.9
Totals	496	459	92.5	5	1.0	32	6.5

Factor VII Deficiency

<i>Report year</i>	<i>Cases</i>	<i>Normal</i>	<i>% Normal</i>	<i>Abnormal</i>	<i>% Abnormal</i>	<i>Carrier</i>	<i>% Carrier</i>
German Wirehaired Pointer							
2017	1	1	100.0				
2018	1	1	100.0				
2019	1	1	100.0				
2020	2	2	100.0				
2021	1	1	100.0				

Factor VII Deficiency

Report year	Cases	Normal	% Normal	Abnormal	% Abnormal	Carrier	% Carrier
Totals	6	6	100.0				

Hemophilia B

Report year	Cases	Normal	% Normal	Abnormal	% Abnormal	Carrier	% Carrier
German Wirehaired Pointer							
2021	1	1	100.0				
Totals	1	1	100.0				

Patella

Report year	Cases	Normal	% Normal	Abnormal	% Abnormal	Equivocal	% Equivocal
German Wirehaired Pointer							
2002	1	1	100.0				
2005	1	1	100.0				
2006	1	1	100.0				
2008	1	1	100.0				
2011	1	1	100.0				
2015	2	2	100.0				
2016	3	3	100.0				
2017	1	1	100.0				
2018	2	2	100.0				
2019	4	4	100.0				
2020	3	3	100.0				
2021	3	3	100.0				
Totals	23	23	100.0				

Shoulder

Report year	Cases	Normal	% Normal	Abnormal	% Abnormal
German Wirehaired Pointer					
2005	1	1	100.0		
2016	1	1	100.0		
2018	2	2	100.0		
2019	1	1	100.0		
2021	3	2	66.7	1	33.3
Totals	8	7	87.5	1	12.5

Thyroid

Report year	Cases	Normal	% Normal	Abnormal	% Abnormal	Equivocal	% Equivocal
German Wirehaired Pointer							
1997	7	5	71.4	2	28.6		
1998	9	6	66.7			3	33.3
1999	5	3	60.0	1	20.0	1	20.0

Thyroid

<i>Report year</i>	<i>Cases</i>	<i>Normal</i>	<i>% Normal</i>	<i>Abnormal</i>	<i>% Abnormal</i>	<i>Equivocal</i>	<i>% Equivocal</i>
2000	11	4	36.4	3	27.3	4	36.4
2001	20	14	70.0	4	20.0	2	10.0
2002	13	7	53.9	5	38.5	1	7.7
2003	9	5	55.6	2	22.2	2	22.2
2004	20	16	80.0	3	15.0	1	5.0
2005	15	12	80.0	1	6.7	2	13.3
2006	26	22	84.6	1	3.9	3	11.5
2007	26	18	69.2	3	11.5	5	19.2
2008	32	26	81.3	3	9.4	3	9.4
2009	30	24	80.0			6	20.0
2010	50	45	90.0	2	4.0	3	6.0
2011	55	40	72.7	6	10.9	9	16.4
2012	57	45	79.0	6	10.5	6	10.5
2013	83	66	79.5	3	3.6	14	16.9
2014	79	59	74.7	9	11.4	11	13.9
2015	70	58	82.9	7	10.0	5	7.1
2016	100	81	81.0	10	10.0	9	9.0
2017	98	88	89.8	5	5.1	5	5.1
2018	94	77	81.9	8	8.5	9	9.6
2019	124	109	87.9	8	6.5	7	5.7
2020	128	100	78.1	16	12.5	12	9.4
2021	146	112	76.7	19	13.0	15	10.3
Totals	1307	1042	79.7	127	9.7	138	10.6

Von Willebrands

<i>Report year</i>	<i>Cases</i>	<i>Normal</i>	<i>% Normal</i>	<i>Abnormal</i>	<i>% Abnormal</i>	<i>Carrier</i>	<i>% Carrier</i>
German Wirehaired Pointer							
2008	3	3	100.0				
2009	35	35	100.0				
2010	9	9	100.0				
2011	28	28	100.0				
2012	12	12	100.0				
2013	4	4	100.0				
2014	6	5	83.3			1	16.7
2015	6	6	100.0				
2016	2	2	100.0				
2017	6	6	100.0				
2018	7	7	100.0				
2019	3	3	100.0				
2020	7	7	100.0				
2021	6	6	100.0				
Totals	134	133	99.3			1	0.8