



THE CEDAR AT GRAPETREE

2442 S
APPLETREE
COURT

NEW CONSTRUCTION
CUSTOM HOME
NO STEP ENTRY
DAYLIGHT RANCHER

OFFERED AT

\$ 925,000



THE CEDAR

3671 Total SF - 3501 SF Finished
1856 SF Main Floor
1815 SF Basement - 1645 SF finished
2.5 Baths, 4 Bedrooms, Den & 2 Car Garage

Details and prices subject to changes as built.

Revised on June 12, 2023

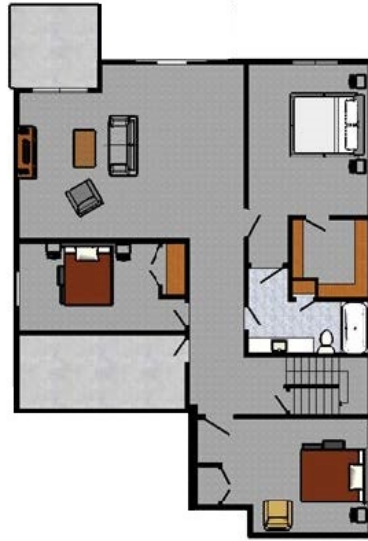
GRAPETREE



ELEGANT 55+ GATED
COMMUNITY ON
SPOKANE'S SOUTH HILL



Main Floor



Basement



STANDARD FEATURES

- NO STEP ENTRY**
- MAIN FLOOR LIVING**
- GAS FIREPLACE**
- COVERED DECK**
- HARDWOOD FLOORING**
- MASTER SUITE**
 - **ROLL-IN TILE SHOWER**
 - **HEATED TILE BATH FLOOR**
 - **BIDET TOILET**
- QUARTZ COUNTERS**
- FULL WOOD WRAP WINDOWS**
- STAINLESS APPLIANCES**

CONTACT GORDON FINCH HOMES

509-926-7013

101 N. Argonne Rd., Suite C

roberto@gordonfinchhomes.com

www.gordonfinchhomes.com



Details and prices subject to changes as built.

Revised on June 12, 2023