



THE CEDAR AT GRAPETREE

2442 S
APPLETREE
COURT

NEW CONSTRUCTION
CUSTOM HOME
NO STEP ENTRY
DAYLIGHT RANCHER

OFFERED AT

\$ 874,000



THE CEDAR

3671 Total SF - 3501 SF Finished
1856 SF Main Floor
1815 SF Basement - 1645 SF finished
2.5 Baths, 4 Bedrooms, Den & 2 Car Garage

Details and prices subject to changes as built.
Revised on November 3, 2022

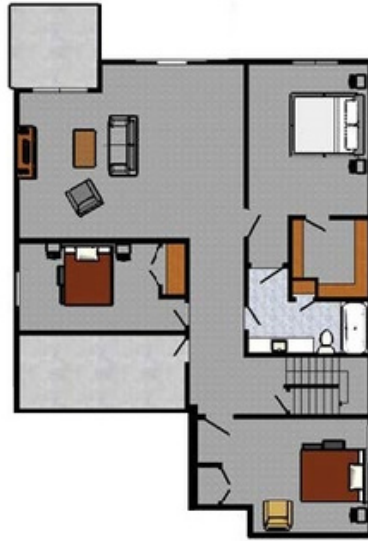
GRAPETREE



ELEGANT 55+ GATED
COMMUNITY ON
SPOKANE'S SOUTH HILL



Main Floor



Basement



STANDARD FEATURES

NO STEP ENTRY
MAIN FLOOR LIVING
GAS FIREPLACE
COVERED DECK
HARDWOOD FLOORING
MASTER SUITE

- **ROLL-IN TILE SHOWER**
- **HEATED TILE BATH FLOOR**

GRANITE/QUARTZ COUNTERS
FULL WOOD WRAP WINDOWS
GE PROFILE APPLIANCES
CUSTOMIZABLE

CONTACT GORDON FINCH HOMES

509-926-7013

101 N. Argonne Rd., Suite C

roberto@gordonfinchhomes.com

www.gordonfinchhomes.com

Details and prices subject to changes as built.
Revised on November 3, 2022

