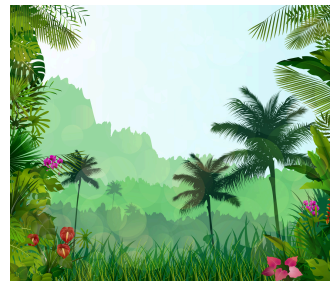


Name: _____

Rainforests



Rainforests are thick, dense forests found in warm, wet places all over the world. They are home to more types of plants and animals than any other place on Earth. The Amazon Rainforest in South America is the largest rainforest, covering about 5.5 million square kilometers. Rainforests are very important to our planet because they produce oxygen, which we need to breathe, and they help regulate the Earth's temperature.

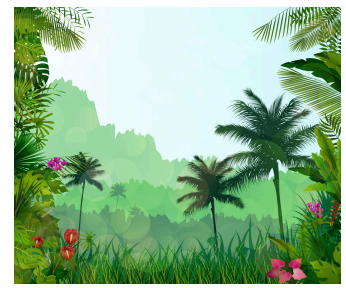
In a rainforest, you can find four main layers. The Emergent Layer is the topmost layer where the tallest trees reach up to the sky. Birds like eagles and parrots are often found here. Below this is the Canopy Layer, which acts like a roof over the forest. This layer has plenty of food, so animals like monkeys, sloths, and snakes spend most of their time here.

Under the canopy is the Understory Layer, where it is dark and humid. Plants with big leaves grow here, and you can find animals like frogs and jaguars. Finally, at the bottom, is the Forest Floor. It is covered with leaves, branches, and decomposing plants. Very little sunlight reaches this layer, so only a few plants grow here. However, many insects, worms, and fungi live on the forest floor.

Rainforests are often called the “lungs of the Earth” because of the large amount of oxygen they produce. Unfortunately, many rainforests are being cut down to make room for farms, roads, and houses. This process, called deforestation, harms the animals and plants that live there and also affects our climate. Protecting rainforests is important to help keep our planet healthy.



Section A: Factual Questions



1. What is the largest rainforest in the world?

2. Name the four layers of a rainforest in order from top to bottom.

3. Why are rainforests called the “lungs of the Earth”?

4. What are some animals found in the Canopy Layer?

5. What is deforestation?

Section B: Vocabulary



1. Choose the correct word from the passage to complete these sentences:

a) The rainforest has a thick and _____ forest.

b) Many _____, worms and fungi live on the forest floor.

c) The process of cutting down rainforests is called _____

2. Choose the correct word from the passage to complete these sentences.

2.1) **Emergent-**

- a) the top layer of the rainforest.
- b) small plants with big leaves.
- c) animals that live underground.

2.2) **Decomposing –**

- a) growing very tall
- b) rotting or breaking down
- c) providing shelter



Section C: Critical Thinking



1) Why do you think it's dark in the Understory Layer ?

2) How might deforestation affect the animals living in the rainforest?

Section D: Writing



Write 3-4 sentences describing the life of an animal in the rainforest. You can choose any animal from the passage, such as a monkey or a jaguar.





Section D: Writing



1) Draw and Label

Draw a picture of any two layers of the rainforest and label each layer with the names and some animals or plants that live in each.
