

Quad Pod K50 K65

Mobile Sports Lighting

A range of high efficiency, LED portable lighting towers for all your outdoor sports lighting needs

Up to 245,000 Lumens Light Output



www.riteliteportablelighting.co.uk

The K50 & K65



K50

5.2 metre mast height
3 mast sections
4 or 6 light heads
200W or 240W LED light heads

K65

6.6 metre mast height
4 mast sections
4 or 6 light heads
200W or 240W LED light heads



Market leading features

- Highly flexible – easy to manoeuvre to any location and small enough to fit through small spaces and a standard doorway
- One person deployment system – quick and easy to setup in under 2 minutes
- High power LED light heads – 28,000 lumens per 200W light head, or 40,800 lumens per 240W light head
- Total wattage max 1200W (6 x 200W LED heads) or 1440W (6 x 240W LED heads) = small generator requirement
- Small footprint for storage
- Designed to minimize ground damage both whilst setting up and in use
- Class leading Rite-Safe operator safety system

Can be powered by mains or generator

- AC mains power supply (110V or 240V AC)
- Petrol or diesel generators

QUAD POD THE BEST SOLUTION FOR YOUR MOBILE LIGHTING APPLICATION

The quad pod is a high power mobile outdoor floodlighting solution specifically designed for Sports applications including:

- Football
- Rugby
- Tennis
- Community Events & Open Days
- Cricket Nets
- Netball
- Outdoor Bowls
- Equestrian Arenas

Wide range of configurations suitable for all levels of sport:

- Professional Clubs
- Amateur Clubs
- Schools

All models can be powered by mains or generator

- AC mains power supply (100V - 250V AC)
- Petrol or Diesel Generators



Why do so many sports clubs choose our portable floodlights?

- ✓ Allows evening training sessions on any sports pitch or area of the sports facility
- ✓ Highly flexible – easy to manoeuvre to any location
- ✓ One person deployment system – quick and easy to setup in under 2 minutes
- ✓ High power LED lights; generator or mains powered
- ✓ No planning permission required*

* Subject to local planning restrictions





Features & Benefits

Operator Safety



Integrated manual winch with automatic safety brake and slack rope safety system

The slack rope safety system automatically detects when the winch rope is not correctly tensioned and prevents the user from continuing to operate the winch in the mast lowering direction. This helps to protect the user from potentially unsafe operating conditions and also protects the wire rope and winch from damage.



Automatic mast safety interlock system

Market leading, double pin safety locking system ensures that the mast is automatically and safely mechanically locked in all positions when raising the mast. This system also acts as a "dead man's handle" for safe lowering of the mast.



Automatic mast safety and stowage lock

Helps prevent mast from being raised until legs are deployed and secures mast for transport



Operator level RCBO electrical safety isolation switch

No need to lower mast to turn luminaries on and off. Instant power off should an electrical problem occur

Features & Benefits



One person deployment system

Even on difficult terrains, enabling use in a much wider range of applications than other lighting towers



Unique parallel mast design

Allows the mast sections to slide past each other and the light head assembly to be fully retracted and stowed at the base of the unit. The centre of gravity is very low with the weight perfectly balanced over the wheels for easy and safe handling even on difficult terrain.



Low pressure footprint

Low pressure footprint with non-marking base. Optimum stability with minimum ground impact. Ideal for deployment on impressionable ground surfaces.



Fork lift pockets and tie down points

For safe and fast handling, loading and unloading at storage depots and work sites.



Low centre of gravity for safe handling on site

Typical telescopic mast designs do not allow the light heads to be retracted below approx 2m height for transportation and positioning on site. This results in either having to remove the light heads or in a high centre of gravity making positioning and handling difficult and potentially unsafe, especially on uneven surfaces.

Features & Benefits



Individual, fully adjustable light heads

Allows light to be adjusted to suit any application including a 360° light pattern



Independently adjustable legs

Rapid to deploy, Independently adjustable legs. Designed to enable maximum stability in all typical work site deployment conditions.



Built in level gauge

Reduces set-up time and allows the operator to ensure that the mast is setup correctly and safely.



Mains and generator powered

For use with existing power supply equipment. 110V or 240V options available.



Low pressure wheel / tyres

Suitable for manoeuvring over many different terrains without damage to the surface

Technical Specifications



- High power, highly efficient LED light heads
- Option of 4 or 6 light heads per Quad Pod
- Option of two mast heights
- 200W or 240W power per light head
- 28,000 lumens per 200W light head
- 40,800 lumens per 240W light head
- Cool white colour temperature

K50

PRODUCT CODE	MAST HEIGHT	LIGHT HEAD WATTAGE	NUMBER OF HEADS	WEIGHT	CLOSED DIMENSIONS	OPEN DIMENSIONS
K50/MK4-L4-200W	5.2m	200W	4	220Kg	1090 x 830 x 1950mm	2370 x 3100 x 5200mm
K50/MK4-L6-200W	5.2m	200W	6	240Kg	1090 x 830 x 1950mm	2370 x 3100 x 5200mm
K50/MK4-L4-240W	5.2m	240W	4	220Kg	1090 x 830 x 1950mm	2370 x 3100 x 5200mm
K50/MK4-L6-240W	5.2m	240W	6	240Kg	1090 x 830 x 1950mm	2370 x 3100 x 5200mm

K65

PRODUCT CODE	MAST HEIGHT	LIGHT HEAD WATTAGE	NUMBER OF HEADS	WEIGHT	CLOSED DIMENSIONS	OPEN DIMENSIONS
K65/MK4-L4-200W	6.62m	200W	4	230Kg	1090 x 830 x 1950mm	2370 x 3100 x 6620mm
K65/MK4-L6-200W	6.62m	200W	6	250Kg	1090 x 830 x 1950mm	2370 x 3100 x 6620mm
K65/MK4-L4-240W	6.62m	240W	4	230Kg	1090 x 830 x 1950mm	2370 x 3100 x 6620mm
K65/MK4-L6-240W	6.62m	240W	6	250Kg	1090 x 830 x 1950mm	2370 x 3100 x 6620mm

How many lights do I need?

The number of quad pods required depends on the sport being played and the level of light required.

Experience

Ritelite's customer support team are highly experienced in recommending the right number and configuration of Quad Pods for every application and sport.

Lighting design

Ritelite's Lighting design team are able to supply relux lighting plots for any set up of quad pods to show what the light levels would be on your pitch.

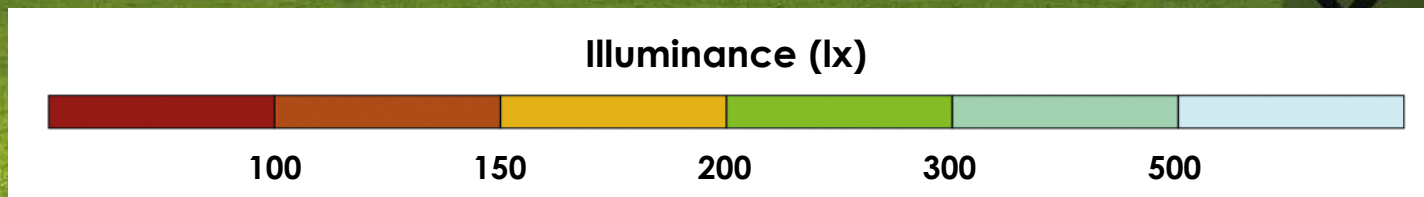
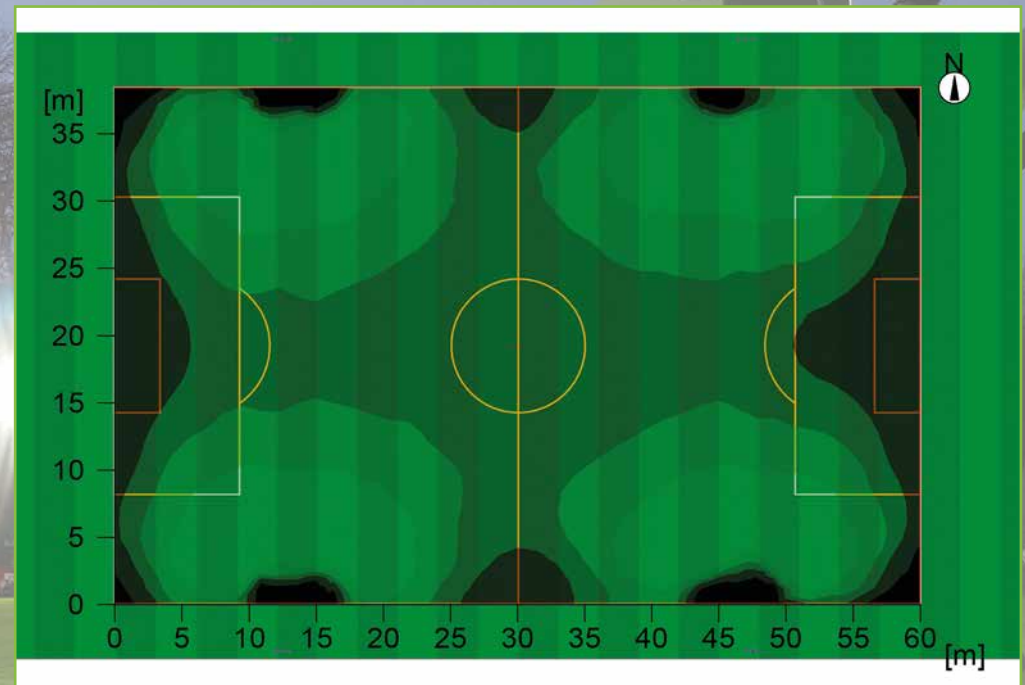
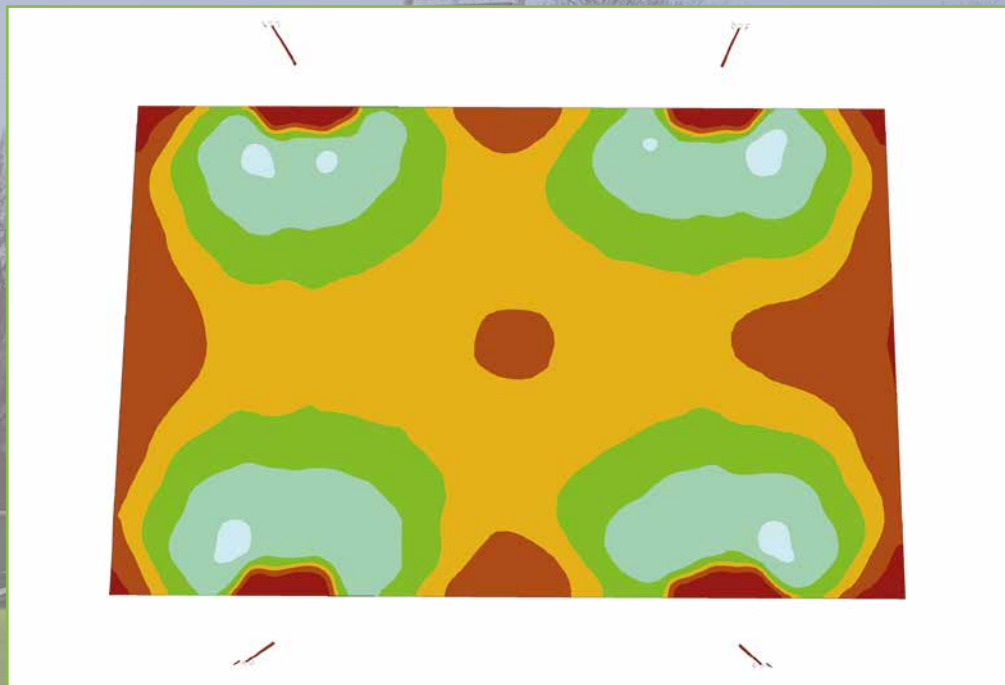
Demonstrations

If you would like to see the Quad Pod in action please get in touch with our sales department to arrange for a demonstration – we might be able to suggest somewhere local to visit or arrange to carry out a demonstration for you on your pitch.

The following pages show some typical relux lighting plots from projects we have carried out for different types of sports applications.

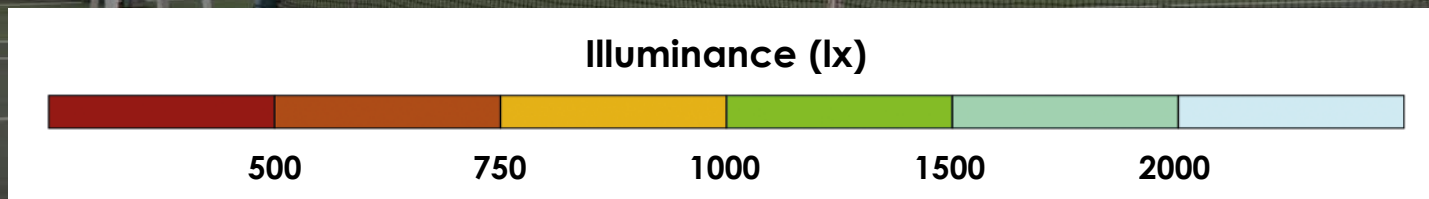
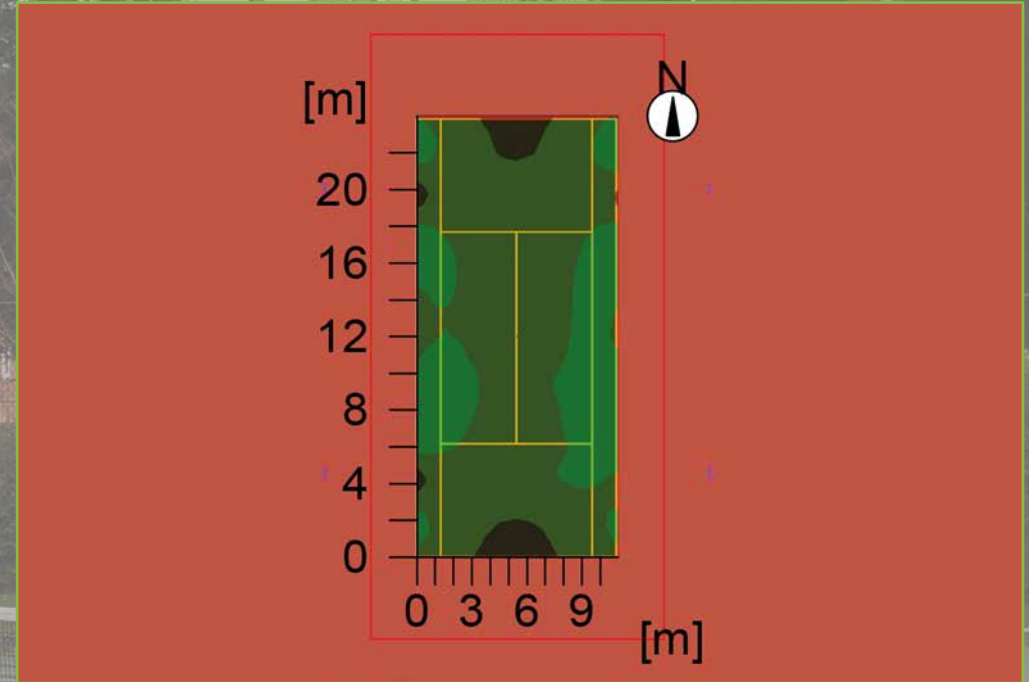
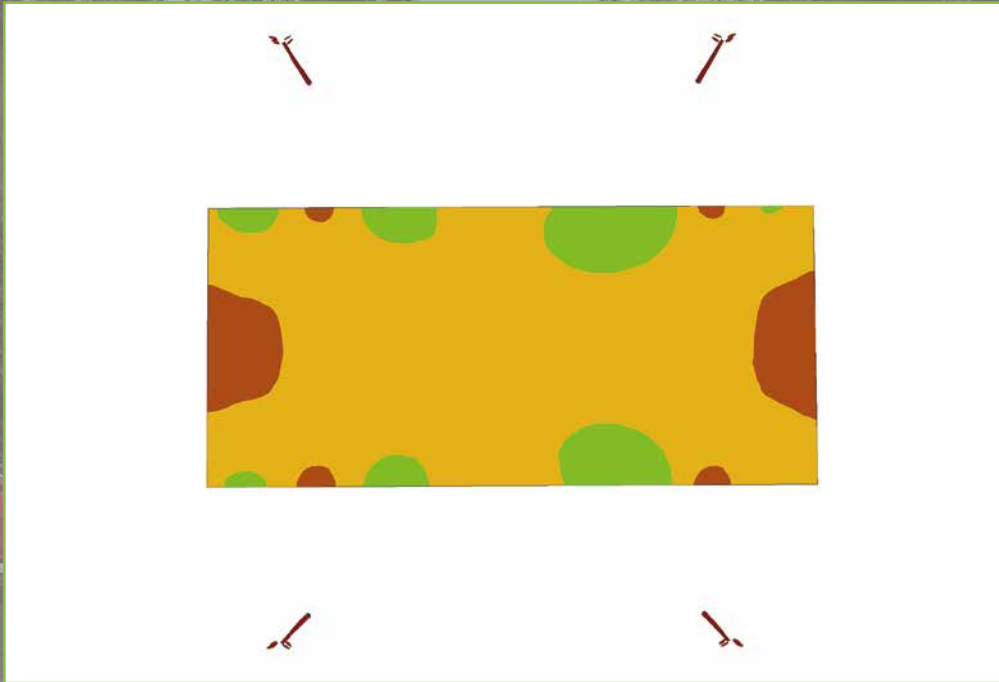
Football

Pitch size 60 x 40m - 4 x K65 units with 4 x 240W LED light heads
Quad Pods used for training



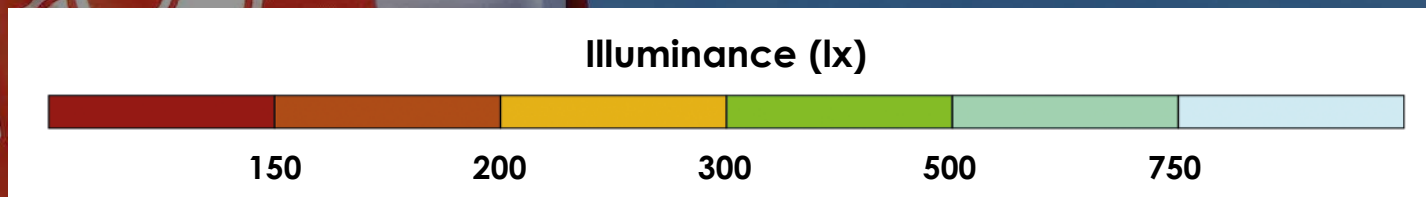
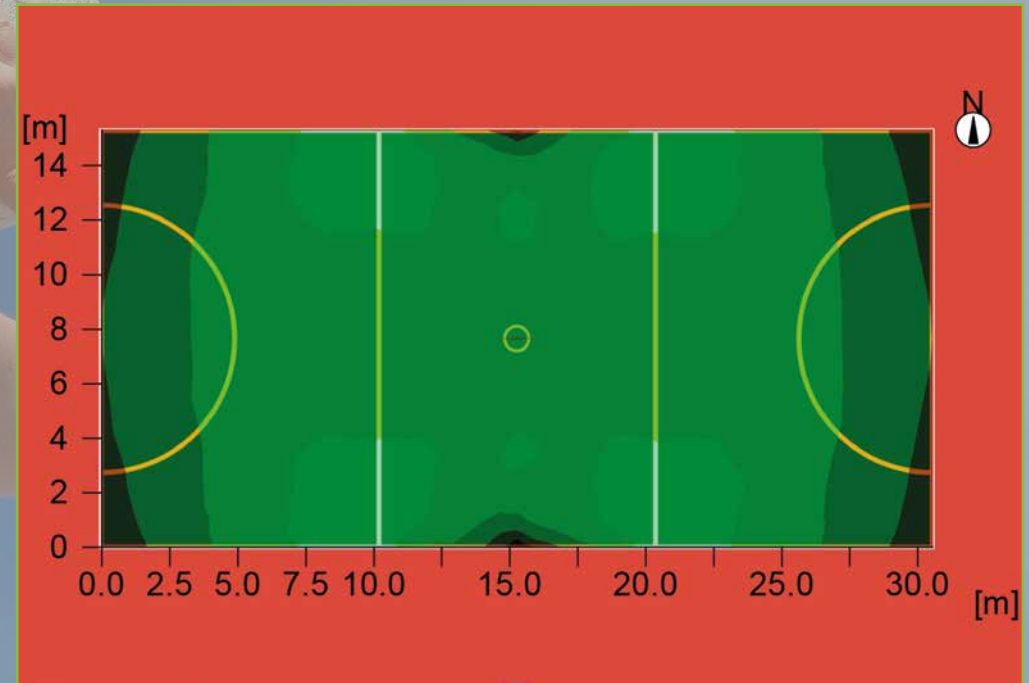
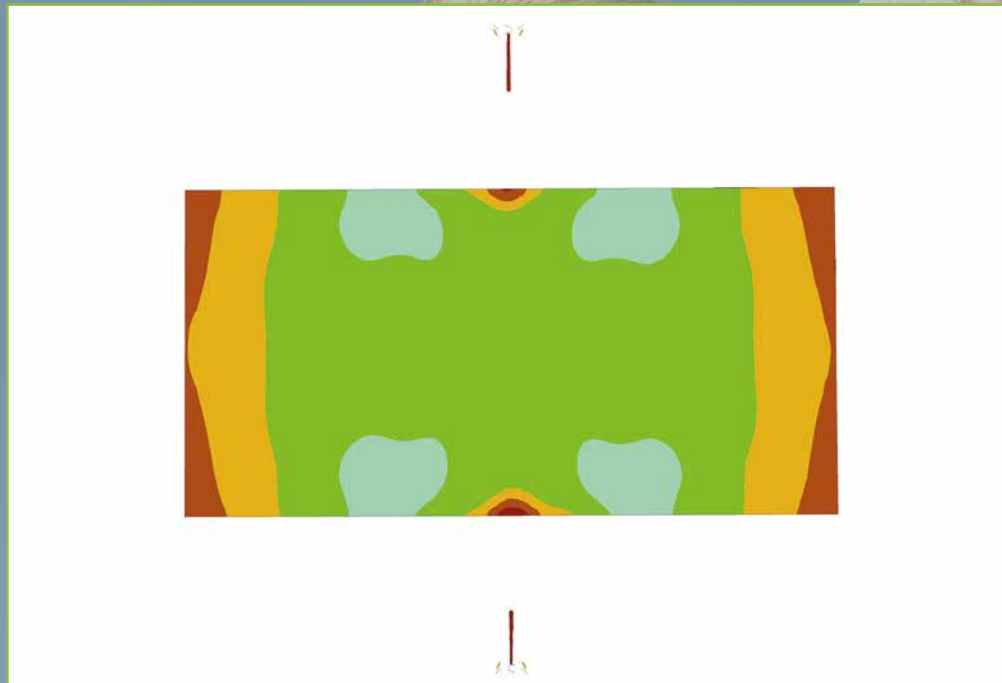
Tennis

Court size 23.77 x 19.97m - 4 x K65 units with 4 x 240W LED light heads
Quad Pods used for training



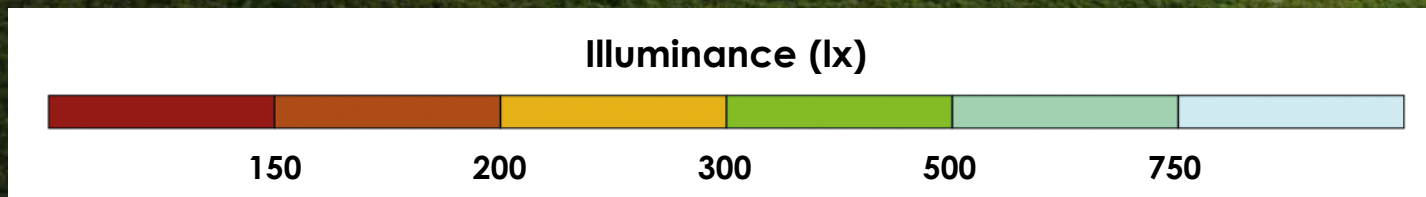
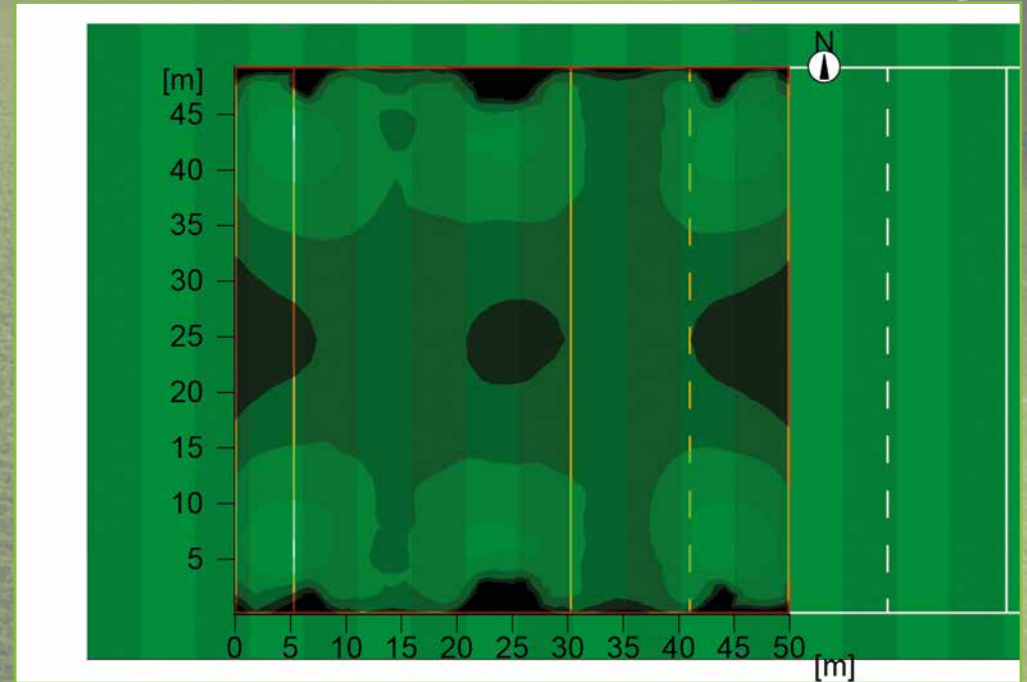
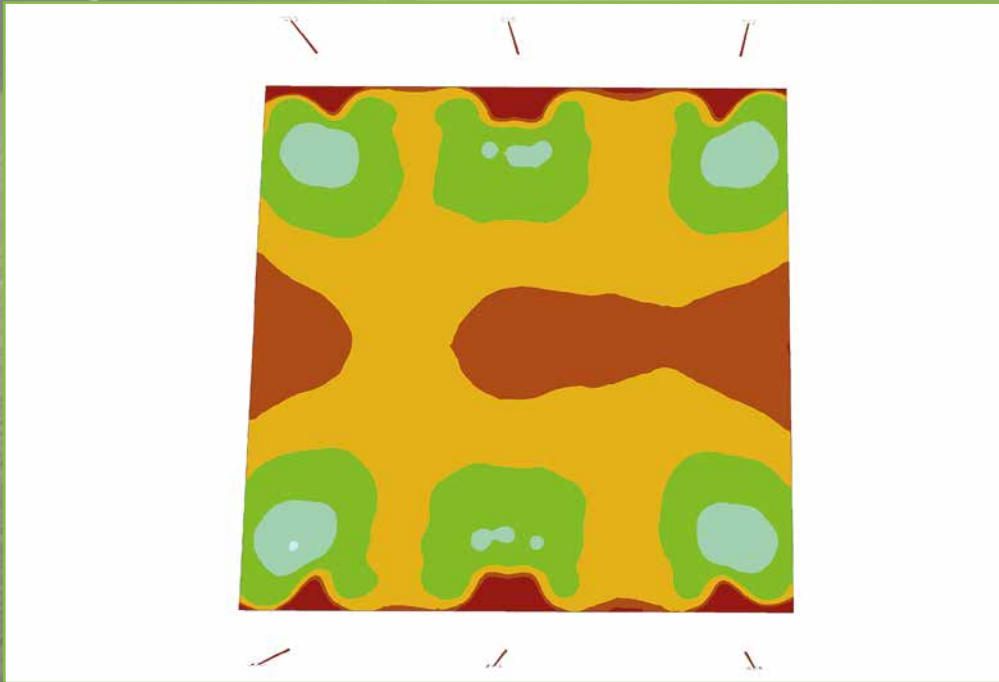
Netball

Court size 30.5 x 15.25m - 2 x K65 units with 6 x 240W LED light heads
Quad Pods used for training



Rugby

Pitch size 100 x 55m - 6 x K65 units with 6 x 240W LED light heads
Quad Pods used for half pitch training



Accessories

PETROL GENERATORS

We offer a choice of two petrol generators which are ideal for use with our Quad Pod mobile lighting towers. Both are portable, efficient to run with low carbon emissions, and low noise levels.

1.6 KW

- Rated output: 1.6 KW
- Fuel capacity: 4.2 litre
- Running time: up to 5 hours*
- Rated voltage: 110 or 230V
- Noise levels: 61 dBA
- Dimensions: 499 x 285 x 466mm
- Weight: 21Kg



3.0 KW

- Rated output: 3.0 KW
- Fuel capacity: 10 litre
- Running time: up to 10 hours*
- Rated voltage: 110 or 230V
- Noise levels: 65 dBA
- Dimensions: 578 x 440 x 510mm
- Weight: 45Kg



How many Quad Pods will the 1.6KW generator supply?

- 1 x K50 4 or 6 head unit with 200W light heads
- 1 x K65 4 or 6 head unit with 200W light heads

How many Quad Pods will the 3.0KW generator supply?

- 3 x K50 / K65 4 head unit with 200W light heads
- 2 x K50 / K65 6 head unit with 200W light heads
- 2 x K50 / K65 6 head unit with 240W light heads

* 1 generator powering 1 x K65 Quad Pod with 6 LED 200W Heads. Duration may depend on operating conditions.

EXTENSION LEADS

Extension leads are available in a variety of lengths to meet customer requirements. We offer a choice of plugs and sockets, also a choice of cable specifications.



Established in 1988, Ritelite (Systems) Ltd is a specialist in portable & mobile lighting equipment with over 80 years combined experience in the industry.

Ritelite's head office and main manufacturing facility is located in Stamford, Lincolnshire. Ritelite also has an office in Wiltshire, England and a European base in Rheinfelden, Germany.

Ritelite is continually developing new innovative portable & mobile lighting products incorporating the market leading technology and designs.

As an ISO 9001 and 14001 accredited company Ritelite puts quality first reliably delivering high quality products to exceed customer expectations.

Ritelite works together with a network of local partners to ensure the highest level of service to our customers worldwide.

For further information please get in touch with us

UK HEAD OFFICE

Ritelite (Systems) Ltd, Meadow Park, Bourne Road,
Essendine, Stamford, Lincolnshire, PE9 4LT, England

Telephone: +44 (0) 1780 758585

Fax: +44 (0) 1780 765700

E-mail: sales@ritelite.co.uk

GERMAN OFFICE

Telephone: +49 (0) 7623 3074308

Fax: +49 (0) 7623 3074310

Mobile: +49 (0) 176 45822464

E-mail: export@ritelite.co.uk

www.riteliteportablelighting.co.uk