



HENDEL & HENDEL

British Design,
Global Inspiration.



HENDEL & HENDEL



Who We Are

Founded in 1971, our team of artists and engineers continues to question the boundaries of design to create hardware that elevates the everyday.

We truly believe that once you know the rules of form and function, you can break them; and over 50 years later, this remains our mantra. Considering every groove, texture and angle, our collections are designed to be as unique as they are practical.

We don't wait for trends, we create them.

Leaning on our British heritage, we find inspiration from around the globe and bring it home to forge the finest handles.

From quintessential cup handles to minimalist profiles, our brand caters for every homeowner's and designer's vision.

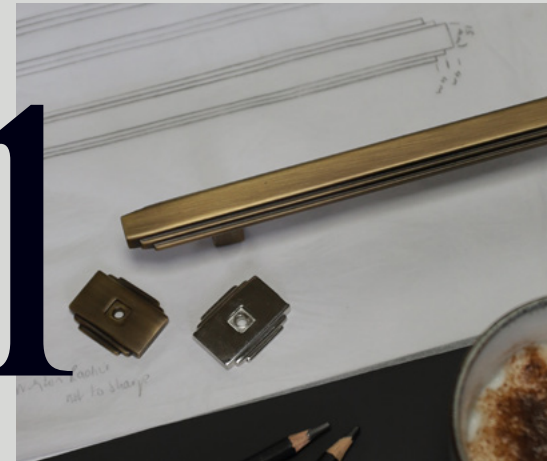


Our Dedication to Perfection

Every handle we make has to earn its place – in our range and on your project. Nothing leaves our factory until it's the perfect balance of form and function. Getting there isn't simple and we have a 6 step approach. It takes a team of artists and engineers to create the concept, an expert eye to source the highest quality materials, and craftsmen to bring it to life.

The result is a handle that has been refined to perfection, one we're proud to put our name on.

1



Conceptualize & Inspire

4



Sample Testing

2



Prototype & Define

5



Manufacturing & Finishing

3



Tooling Development

6



Quality Assurance & Testing



Our Collections

Transitional		Contemporary	
Brokk	11-14	Conic	109-112
Fitzrovia	15-20	Lindum	113-116
Belgravia	21-26	Dixton	117-120
Felix	27-30	Battersea	121-124
Ark	31-34	Quinn	125-126
Geddes	35-38	Reba	127-128
Bailgate	39-42	Jura	129-130
Barrington	43-48	Edison	131-132
Barrington Eclipse	49-52	Lincoln	133-134
Liberty	53-58	Evora	135-136
Pembrey	59-62	Kellas	137-140
Hudson	63-66	Milano	141-142
Newport	67-68	Coleby	143-144
Finley	69-70		
Otto	71-72		
Aubyn	73-74		
Lumi	75-76		
Traditional			
	Greenwich	79-80	
	York	81-82	
	Westgate	83-84	
	Callcott	85-90	
	Fleur	91-92	
	Finsbury	93-94	
	Hampton	95-98	
	Trafalgar	99-100	
	Charlbury Coco	101-102	
	Jago	103-104	
	Ivo	105	
	Ilsa	106	



Transitional

Brokk Collection

Creating a play of contrasts between the bold, circular bar and captivating, shotblasted backplate, Brokk epitomises handle art. Blending global design influence with traditional craftsmanship breaks the conventional, forming a collection with unrivalled allure.




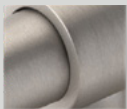

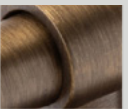
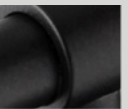
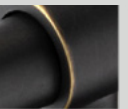



Brokk Collection

Creating a play of contrasts between the bold, circular bar and captivating, shotblasted backplate, Brokk epitomises handle art. Blending global design influence with traditional craftsmanship breaks the conventional, forming a collection with unrivalled allure.

Made from Brass. Includes fixings.

FINISHES

						
BURNISHED BRASS (BB)*	BRUSHED NICKEL (BN)	BRUSHED SATIN BRASS (BSB)	DARK BRUSHED BRASS (DBB)	MATT BLACK (MBL)	OIL RUBBED BRONZE (ORB)	POLISHED NICKEL (PN)

*Living Finish - **Waxed**



121MM T-BAR KNOB

CODE: **GBRK121**

FINISH CODE
BB(WAXED), BN, BSB, DBB, MBL, ORB, PN

HOLE CENTRES	PROJECTION	OVERALL LENGTH	BAR THICKNESS
-	42MM	121MM	13MM



96MM PULL HANDLE

CODE: **GBRP096**

FINISH CODE
BB(WAXED), BN, BSB, DBB, MBL, ORB, PN

HOLE CENTRES	PROJECTION	OVERALL LENGTH	BAR THICKNESS
96MM	42MM	260MM	13MM



128MM PULL HANDLE

CODE: **GBRP128**

FINISH CODE
BB(WAXED), BN, BSB, DBB, MBL, ORB, PN

HOLE CENTRES	PROJECTION	OVERALL LENGTH	BAR THICKNESS
128MM	47.5MM	400MM	14MM

Fitzrovia Collection

Influenced by Art Deco design, Fitzrovia is characterized by distinctive stepped detailing and the perfect art of symmetry. Each of the five pieces includes matching backplates, creating a striking silhouette when set in context. Luxury, sophistication, and functionality come together impeccably to form this statement collection that will elevate any space.



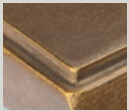


Fitzrovia Collection

Influenced by Art Deco design, Fitzrovia is characterized by distinct stepped detailing and the perfect art of symmetry. Each of the five pieces include matching backplates, creating a striking silhouette when set in context. Luxury, sophistication, and functionality come together impeccably to form this statement collection that will elevate any space.

Made from Brass. Includes fixings.

FINISHES



BURNISHED
BRASS (BB)*



BRUSHED
NICKEL (BN)



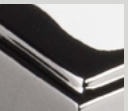
BRUSHED SATIN
BRASS (BSB)



DARK BRUSHED
BRASS (DBB)



MATT BLACK
(MBL)



POLISHED
NICKEL (PN)

*Lacquered



34MM KNOB WITH BACKPLATE

CODE: **GFITK034**

FINISH CODE
BB, BN, BSB, DBB, MBL, PN

PROJECTION	KNOB DIAMETER	BACKPLATE THICKNESS
34MM	34MM	5MM



82MM T-BAR KNOB WITH BACKPLATE

CODE: **GFITK082**

FINISH CODE
BB, BN, BSB, DBB, MBL, PN

PROJECTION	OVERALL LENGTH	WIDTH X HEIGHT	BACKPLATE THICKNESS
34MM	82MM	20MM X 10MM	5MM



160MM PULL HANDLE WITH BACKPLATES

CODE: **GFITP160**

FINISH CODE
BB, BN, BSB, DBB, MBL, PN

HOLE CENTRES	PROJECTION	OVERALL LENGTH	WIDTH X HEIGHT	BACKPLATE THICKNESS
160MM	34MM	240MM	20MM X 10MM	5MM



320MM PULL HANDLE WITH BACKPLATES

CODE: **GFITP320**

FINISH CODE
BB, BN, BSB, DBB, MBL, PN

HOLE CENTRES	PROJECTION	OVERALL LENGTH	WIDTH X HEIGHT	BACKPLATE THICKNESS
320MM	34MM	400MM	20MM X 10MM	5MM



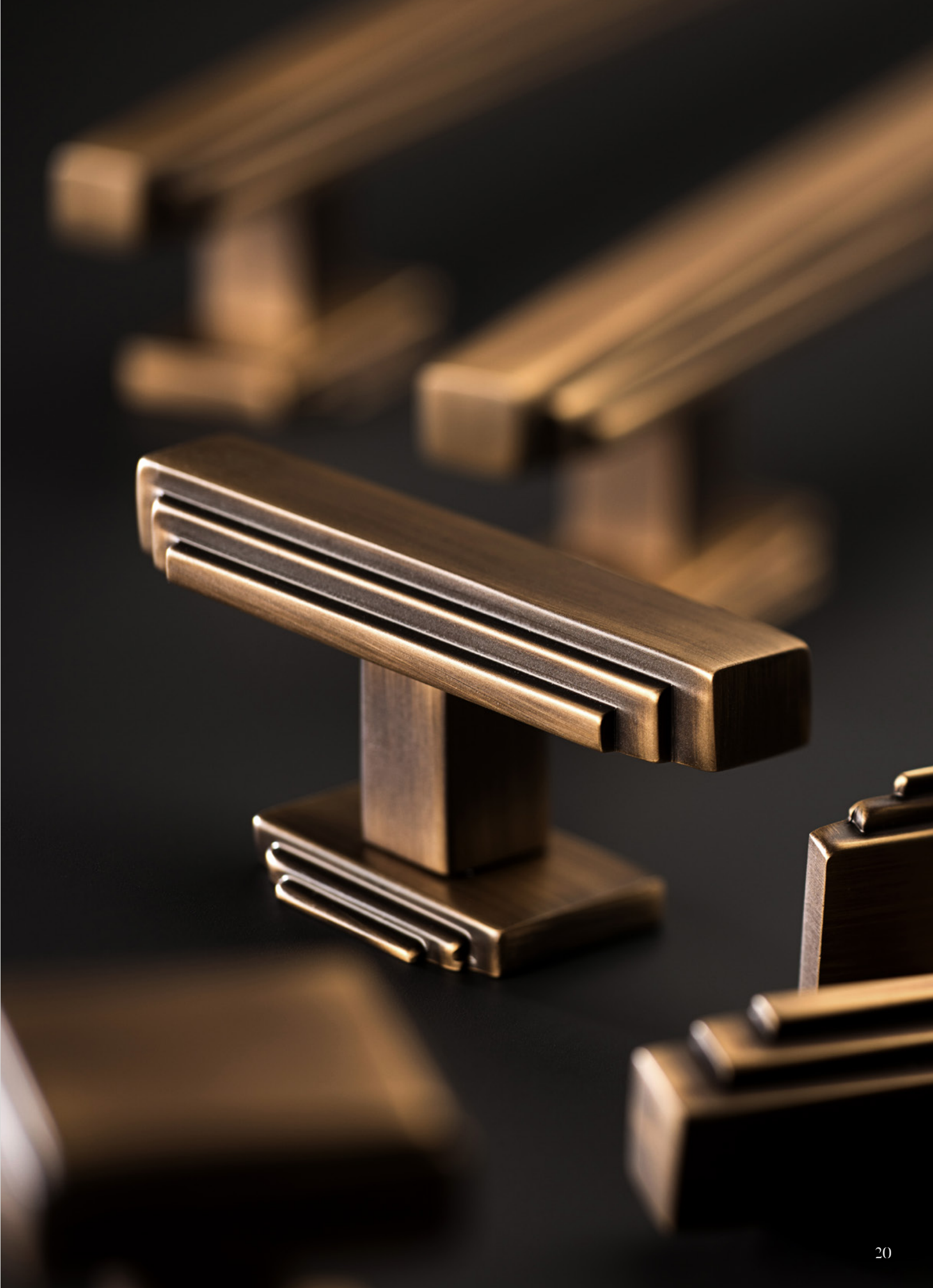
608MM PULL HANDLE WITH BACKPLATES

CODE: **GFITP608**

FINISH CODE
BB, BN, BSB, DBB, MBL, PN

HOLE CENTRES	PROJECTION	OVERALL LENGTH	WIDTH X HEIGHT	BACKPLATE THICKNESS
608MM	34MM	688MM	20MM X 10MM	5MM

Luxury, sophistication, and functionality come together perfectly to form this statement collection that will elevate any space.



Belgravia Collection

Each angle of Belgravia has been considered to form the perfect balance of texture. Crafted to exacting standards, the intricate knurling wraps around each of the four pieces to create a cohesive collection.






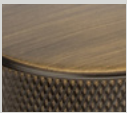
Belgravia Collection

Each angle of Belgravia has been considered to form the perfect balance of texture.
Crafted to exacting standards, the intricate knurling wraps around each
of the four pieces to create a cohesive collection.
Made from Brass. Includes fixings.


FINISHES




BRUSHED
NICKEL (BN)



DARK
BRUSHED
BRASS (DBB)



MATT BLACK
(MBL)



POLISHED
NICKEL (PN)



SATIN
BRASS
LACQUERED (SBL)



19MM KNOB

CODE: **GBELK019**

FINISH CODE
BN, DBB, MBL, PN, SBL

PROJECTION	KNOB DIAMETER
38MM	19MM



35MM KNOB

CODE: **GBELK035**

FINISH CODE
BN, DBB, MBL, PN, SBL

PROJECTION	KNOB DIAMETER
38MM	35MM



82MM T-BAR KNOB

CODE: **GBELK082**

FINISH CODE
BN, DBB, MBL, PN, SBL

PROJECTION	OVERALL LENGTH	BAR THICKNESS
38MM	82MM	14MM



160MM PULL HANDLE

CODE: **GBELP160**

FINISH CODE
BN, DBB, MBL, PN, SBL

HOLE CENTRES	PROJECTION	OVERALL LENGTH	BAR THICKNESS
160MM	38MM	242MM	14MM



320MM PULL HANDLE

CODE: **GBELP320**

FINISH CODE
BN, DBB, MBL, PN, SBL

HOLE CENTRES	PROJECTION	OVERALL LENGTH	BAR THICKNESS
320MM	38MM	402MM	14MM



800MM PULL HANDLE

CODE: **GBELP800**

FINISH CODE
BN, DBB, MBL, PN, SBL

HOLE CENTRES	PROJECTION	OVERALL LENGTH	BAR THICKNESS
800MM	48MM	882MM	16MM

Because little touches can
make a big impact.

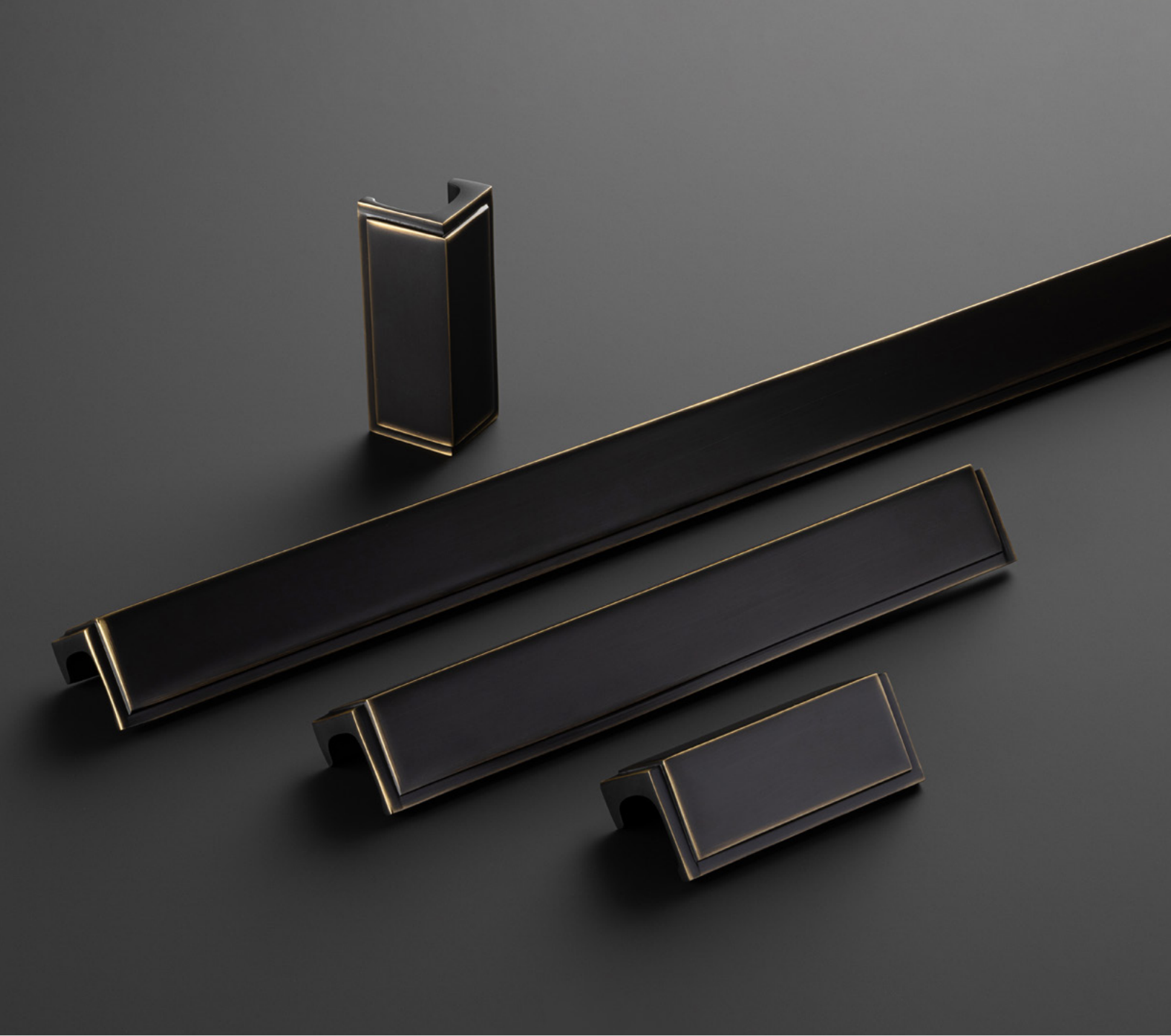


Felix Collection

Combining a captivating stepping detail with an ergonomic profile shape, Felix is a discreet hardware choice for any interior space.

Inspired by the upright, parallel aesthetic of a city skyline, the design proportions blend form with function to create a sophisticated and refined collection.





Felix Collection

Combining a captivating stepping detail with an ergonomic profile shape, Felix is a discreet hardware choice for any interior space. Inspired by the upright, parallel aesthetic of a city skyline, the design proportions blend form with function to create a sophisticated and refined collection.

Made from Brass. Includes fixings.

FINISHES



BURNISHED
BRASS (BB)*



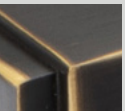
BRUSHED
SATIN
BRASS (BSB)



DARK BRUSHED
BRASS (DBB)



MATT BLACK
(MBL)



OIL RUBBED
BRONZE (ORB)



POLISHED
NICKEL (PN)



64MM PULL HANDLE

CODE: **GFEP064**

FINISH CODE
BB, BSB, DBB, MBL, ORB, PN

HOLE CENTRES	PROJECTION	OVERALL LENGTH	HEIGHT
64MM	28MM	74MM	30MM

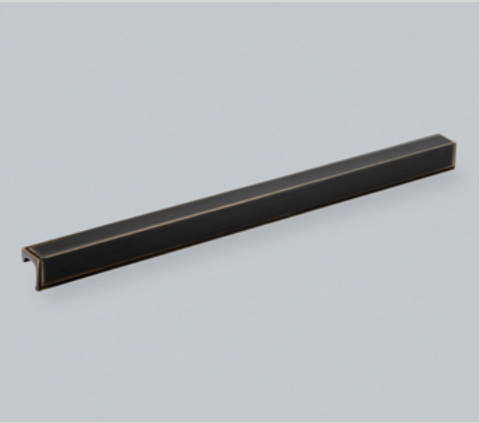


192MM PULL HANDLE

CODE: **GFEP192**

FINISH CODE
BB, BSB, DBB, MBL, ORB, PN

HOLE CENTRES	PROJECTION	OVERALL LENGTH	HEIGHT
192MM	28MM	202MM	30MM



448MM PULL HANDLE

CODE: **GFEP448**

FINISH CODE
BB, BSB, DBB, MBL, ORB, PN

HOLE CENTRES	PROJECTION	OVERALL LENGTH	HEIGHT
224MM X 2	34MM	458MM	36MM

Ark Collection

Capturing the clean, continuous form of bamboo, Ark brings nature to the interior with subtle ridges emulating the nodes of natural bamboo, and thoughtfully proportioned segments providing perfect tactility.







Ark Collection

Capturing the clean, continuous form of bamboo, Ark brings nature to the interior with subtle ridges emulating the nodes of natural bamboo, and thoughtfully proportioned segments providing perfect tactility.
Made from Brass. Includes fixings.


FINISHES




**BURNISHED
BRASS (BB)***



**BRUSHED
SATIN
BRASS (BSB)**



**OIL
RUBBED
BRONZE
(ORB)**



**POLISHED
NICKEL (PN)**

*Living Finish - **Waxed**



32MM PULL HANDLE

CODE: **GARP032**

FINISH CODE
BB, BSB, ORB, PN

HOLE CENTRES	PROJECTION	OVERALL LENGTH	BAR THICKNESS
32MM	30MM	114MM	18MM



160MM PULL HANDLE

CODE: **GARP160**

FINISH CODE
BB, BSB, ORB, PN

HOLE CENTRES	PROJECTION	OVERALL LENGTH	BAR THICKNESS
160MM	30MM	266MM	18MM



320MM PULL HANDLE

CODE: **GARP320**

FINISH CODE
BB, BSB, ORB, PN

HOLE CENTRES	PROJECTION	OVERALL LENGTH	BAR THICKNESS
320MM	33MM	418MM	20MM

Geddes Collection

Hand crafted and individually hammered, the organic texture of this collection creates stunning highlights and shadows to bring any piece of furniture to life. Designed to work seamlessly with both traditional and contemporary spaces, with each piece being unique, this collection promises to make a statement.



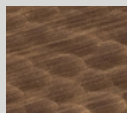


Geddes Collection

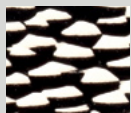
Hand crafted and individually hammered, the organic texture of this collection creates stunning highlights and shadows to bring any piece of furniture to life. Designed to work seamlessly with both traditional and contemporary spaces, with each piece being unique, this collection promises to make a statement.

Made from Brass. Includes fixings.

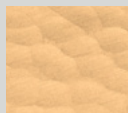
FINISHES



DARK BRUSHED
BRASS (DBB)



POLISHED
NICKEL (PN)



SATIN BRASS
LACQUERED
(SBL)



64MM PULL HANDLE

CODE: **GGEP064**

FINISH CODE
DBB, PN, SBL

HOLE CENTRES	PROJECTION	OVERALL LENGTH	HEIGHT
64MM	23MM	84MM	35MM



160MM PULL HANDLE

CODE: **GGEP160**

FINISH CODE
DBB, PN, SBL

HOLE CENTRES	PROJECTION	OVERALL LENGTH	HEIGHT
160MM	23MM	180MM	35MM



320MM PULL HANDLE

CODE: **GGEP320**

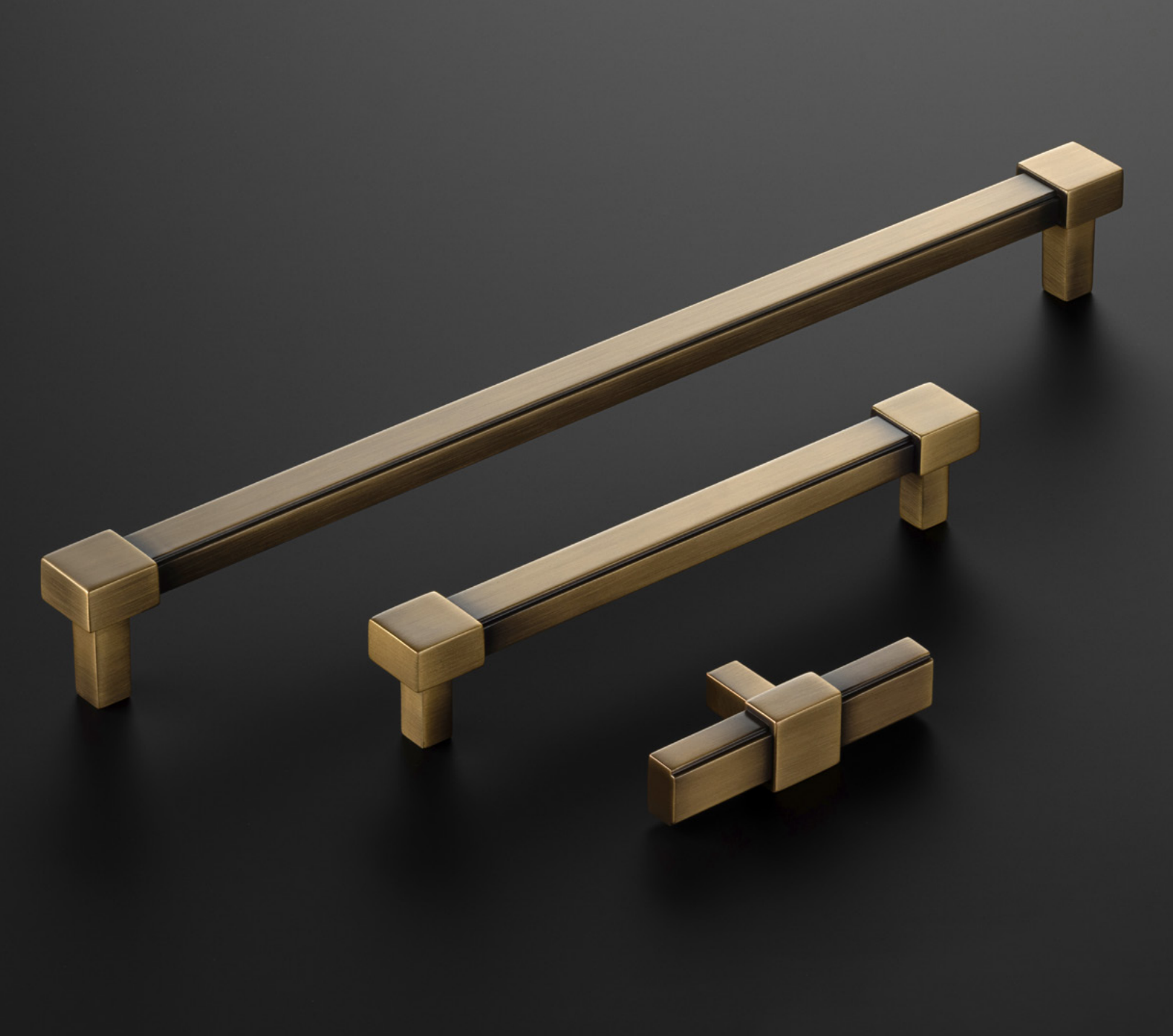
FINISH CODE
DBB, PN, SBL

HOLE CENTRES	PROJECTION	OVERALL LENGTH	HEIGHT
160MM X 2	23MM	340MM	35MM

Bailgate Collection

With the subtle stepped detail surrounding the tactile rectangular bar, the striking square clasps create an impactful detail across this collection.





Bailgate Collection

With the subtle stepped detail surrounding the tactile rectangular bar, the striking square clasps create an impactful detail across this collection. Made from Zamac. Includes fixings.

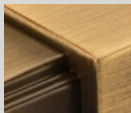
FINISHES



BRUSHED
NICKEL (BN)



BRUSHED
SATIN
BRASS (BSB)



DARK BRUSHED
BRASS (DBB)



MATT BLACK
(MBL)



POLISHED
NICKEL (PN)



82MM T-BAR KNOB

CODE: **GBAIK082**

FINISH CODE
BN, BSB, DBB, NBL, PN

PROJECTION	OVERALL LENGTH
33MM	82MM



160MM PULL HANDLE

CODE: **GBAIP160**

FINISH CODE
BN, BSB, DBB, NBL, PN

PROJECTION	OVERALL LENGTH
33MM	181MM



320MM PULL HANDLE

CODE: **GBAIP320**

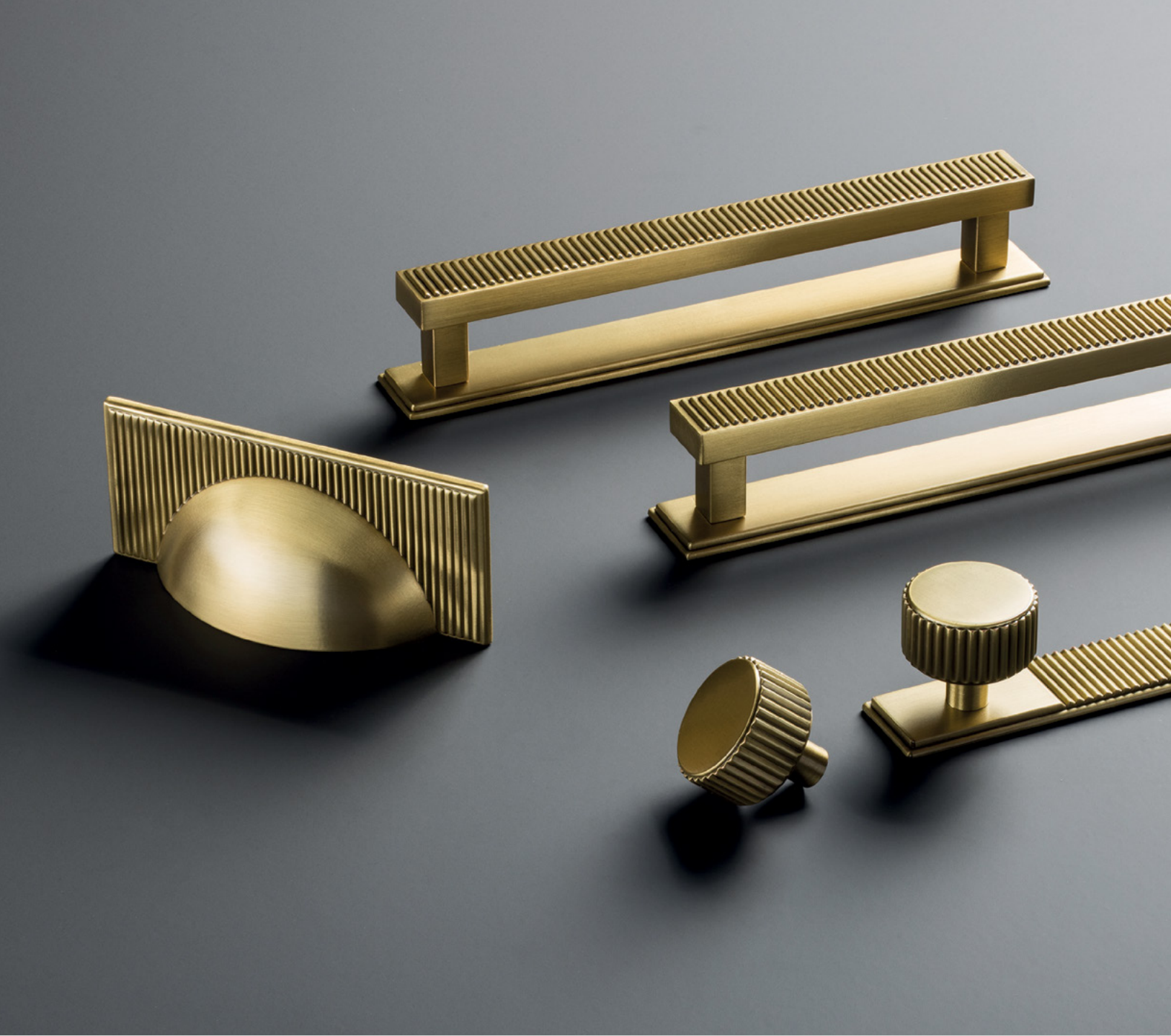
FINISH CODE
BN, BSB, DBB, NBL, PN

PROJECTION	OVERALL LENGTH
39MM	341MM

Barrington Collection

This signature collection features a striking ribbed texture, taking elements of inspiration from Art Deco design. With its bold industrial flair and fine details, the Barrington collection makes a statement.





Barrington Collection

This signature collection features a striking ribbed texture, taking elements of inspiration from Art Deco design. With its bold industrial flair and fine details, the Barrington collection makes a statement. Made from Zamac. Includes fixings.

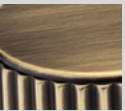
FINISHES



BRONZE
(BRO)



BRUSHED
SATIN
BRASS (BSB)



DARK
BRUSHED
BRASS (DBB)



DULL
NICKEL
(DN)



MATT BLACK
(MBL)



POLISHED
NICKEL (PN)

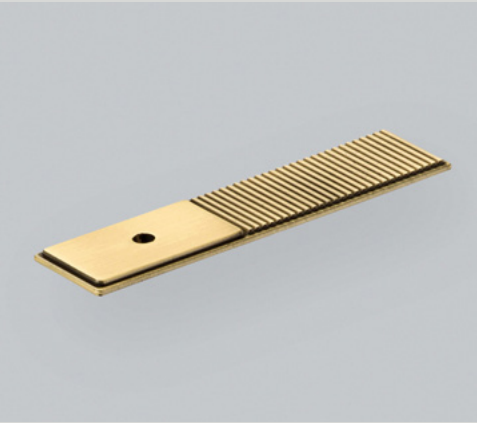


32MM KNOB

CODE: **GBAK032**

FINISH CODE
BRO, BSB, DBB, DN, MBL, PN

PROJECTION	KNOB DIAMETER
29MM	32MM



100MM BACKPLATE FOR KNOB

CODE: **GBABP100**

FINISH CODE
BRO, BSB, DBB, DN, MBL, PN

OVERALL LENGTH	HEIGHT	BACKPLATE THICKNESS
100MM	25MM	4MM



160MM PULL HANDLE

CODE: **GBAP160**

FINISH CODE
BRO, BSB, DBB, DN, MBL, PN

HOLE CENTRES	PROJECTION	OVERALL LENGTH	BAR THICKNESS
160MM	30MM	180MM	20 X 9MM



160MM BACKPLATE FOR PULL HANDLE

CODE: **GU01BP160**

FINISH CODE
BRO, BSB, DBB, DN, MBL, PN

HOLE CENTRES	OVERALL LENGTH	DEPTH	BACKPLATE THICKNESS
160MM	190MM	25MM	4MM



320MM PULL HANDLE

CODE: **GBAP320**

FINISH CODE
BRO, BSB, DBB, DN, MBL, PN

HOLE CENTRES	PROJECTION	OVERALL LENGTH	BAR THICKNESS
320MM	35MM	340MM	20 X 11MM



320MM BACKPLATE FOR PULL HANDLE

CODE: **GU02BP320**

FINISH CODE
BRO, BSB, DBB, DN, MBL, PN

HOLE CENTRES	OVERALL LENGTH	DEPTH	BACKPLATE THICKNESS
320MM	350MM	25MM	4MM



64MM CUP HANDLE

CODE: **GBAC064**

FINISH CODE
BRO, BSB, DBB, DN, MBL, PN

HOLE CENTRES	PROJECTION	OVERALL LENGTH	HEIGHT
64MM	24MM	105MM	45MM



Barrington Eclipse Collection

A statement pull designed as part of the Barrington collection. The Eclipse can be used as a stand-alone, half-moon shape or, when fitted side by side, a full moon. Mix and match the smooth and ribbed textures to create your own statement.





Barrington Eclipse Collection

A statement pull designed as part of the Barrington collection. The Eclipse can be used as a stand-alone, half-moon shape or, when fitted side by side, a full moon. Mix and match the smooth and ribbed textures to create your own statement. Made from Zamac. Includes fixings.

FINISHES



BRONZE
(BRO)



BRUSHED
SATIN
BRASS (BSB)



DARK
BRUSHED
BRASS (DBB)



DULL NICKEL
(DN)



MATT BLACK
(MBL)



POLISHED
NICKEL (PN)



64MM RIBBED PULL HANDLE

CODE: **GBETP064**

FINISH CODE
BRO, BSB, DBB, DN, MBL, PN

HOLE CENTRES	PROJECTION	OVERALL LENGTH	HEIGHT
64MM	26MM	80MM	40MM



64MM SMOOTH PULL HANDLE

CODE: **GBEPP064**

FINISH CODE
BRO, BSB, DBB, DN, MBL, PN

HOLE CENTRES	PROJECTION	OVERALL LENGTH	HEIGHT
64MM	26MM	80MM	40MM



96MM RIBBED PULL HANDLE

CODE: **GBETP096**

FINISH CODE
BRO, BSB, DBB, DN, MBL, PN

HOLE CENTRES	PROJECTION	OVERALL LENGTH	HEIGHT
96MM	26MM	112MM	56MM



96MM SMOOTH PULL HANDLE

CODE: **GBEPP096**

FINISH CODE
BRO, BSB, DBB, DN, MBL, PN

HOLE CENTRES	PROJECTION	OVERALL LENGTH	HEIGHT
96MM	26MM	112MM	56MM

Liberty Collection

Minimalist, clean form, silhouetted by stepped backplates. Each piece of the collection proves less is more.





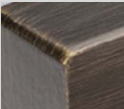
Liberty Collection

Minimalist, clean form, silhouetted by stepped backplates.
Each piece of the collection proves less is more.
Made from Zamac. Includes fixings.

FINISHES



BRUSHED
SATIN
BRASS (BSB)



DARK
BRUSHED
BRASS (DBB)



DULL NICKEL
(DN)



MATT BLACK
(MBL)



POLISHED
NICKEL (PN)



34MM KNOB WITH BACKPLATE

CODE: **GLIBK034**

FINISH CODE
BSB, DBB, DN, MBL, PN

PROJECTION	KNOB DIAMETER	BACKPLATE THICKNESS
32MM	34MM	4MM



72MM T-BAR KNOB WITH BACKPLATE

CODE: **GLIBK072**

FINISH CODE
BSB, DBB, DN, MBL, PN

PROJECTION	OVERALL LENGTH	WIDTH X HEIGHT	BACKPLATE THICKNESS
32MM	72MM	12MM X 12MM	4MM



160MM PULL HANDLE

CODE: **GLIBD160**

FINISH CODE
BSB, DBB, DN, MBL, PN

HOLE CENTRES	PROJECTION	OVERALL LENGTH	WIDTH X HEIGHT
160MM	29MM	172MM	12MM X 12MM



320MM PULL HANDLE

CODE: **GLIBD320**

FINISH CODE
BSB, DBB, DN, MBL, PN

HOLE CENTRES	PROJECTION	OVERALL LENGTH	WIDTH X HEIGHT
320MM	29MM	332MM	12MM X 12MM

25MM BACKPLATE PAIR FOR PULL HANDLE

CODE: GLIBBP025

FINISH CODE
BSB, DBB, DN, MBL, PN

OVERALL LENGTH	HEIGHT	BACKPLATE THICKNESS
25MM	25MM	4MM

160MM BACKPLATE FOR PULL HANDLE

CODE: GU01BP160

FINISH CODE
BSB, DBB, DN, MBL, PN

HOLE CENTRES	OVERALL LENGTH	HEIGHT	BACKPLATE THICKNESS
160MM	190MM	25MM	4MM

320MM BACKPLATE FOR PULL HANDLE

CODE: GU02BP320

FINISH CODE
BSB, DBB, DN, MBL, PN

HOLE CENTRES	OVERALL LENGTH	HEIGHT	BACKPLATE THICKNESS
320MM	350MM	25MM	4MM



Pembrey Collection

This timeless collection features concentric detailing and a flared foot design perfectly suited to both slab and shaker cabinetry.





Pembrey Collection

This timeless collection features concentric detailing and a flared foot design perfectly suited to both slab and shaker cabinetry.
Made from Zamac. Includes fixings.

FINISHES



BRONZE
(BRO)



BRUSHED
SATIN
BRASS (BSB)



DARK
BRUSHED
BRASS (DBB)



MATT BLACK
(MBL)



POLISHED
NICKEL (PN)



82MM T-BAR KNOB

CODE: **GPEK082**

FINISH CODE
BRO, BSB, DBB, MBL, PN

PROJECTION	OVERALL LENGTH	BAR THICKNESS
37MM	82MM	19MM



128MM BAR HANDLE

CODE: **GPEB128**

FINISH CODE
BRO, BSB, DBB, MBL, PN

HOLE CENTRES	PROJECTION	OVERALL LENGTH	BAR THICKNESS
128MM	37MM	210MM	12MM



320MM BAR HANDLE

CODE: **GPEB320**

FINISH CODE
BRO, BSB, DBB, MBL, PN

HOLE CENTRES	PROJECTION	OVERALL LENGTH	BAR THICKNESS
320MM	37MM	402MM	12MM

Hudson Collection

Featuring a intricate grooved section and smooth ends on each piece, an impressive juxtaposition is created through the contrasting textures and balanced proportions.





Hudson Collection

Featuring an intricate grooved section and smooth ends on each piece, an impressive juxtaposition is created through the contrasting textures and balanced proportions.
Made from Aluminium/Zamac. Includes fixings.

FINISHES



BRUSHED SATIN BRASS (BSB)



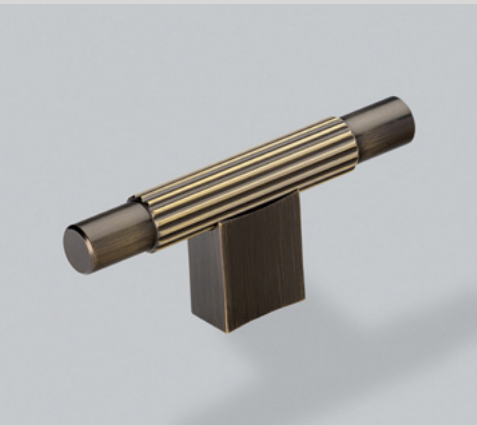
CHROME PLATED (CP)



DARK BRUSHED BRASS (DBB)



MATT BLACK (MBL)



80MM T-BAR KNOB

CODE: **GHUK080**

FINISH CODE
BSB, CP, DBB, MBL

PROJECTION	OVERALL LENGTH	BAR THICKNESS
33MM	80MM	12MM



160MM PULL HANDLE

CODE: **GHUP160**

FINISH CODE
BSB, CP, DBB, MBL

HOLE CENTRES	PROJECTION	OVERALL LENGTH	BAR THICKNESS
160MM	33MM	186MM	12MM



320MM PULL HANDLE

CODE: **GHUP320**

FINISH CODE
BSB, CP, DBB, MBL

HOLE CENTRES	PROJECTION	OVERALL LENGTH	BAR THICKNESS
320MM	33MM	346MM	12MM



Newport Collection

With its understated detailing and refined form, this collection embodies sophistication. Subtle contours add tactility and visual depth, making this the perfect hardware choice for bedroom spaces. Made from Zamac. Includes fixings.

FINISHES



BRUSHED SATIN BRASS (BSB)



CHROME PLATED (CP)



DULL NICKEL (DN)



MATT BLACK (MBL)



32MM KNOB

CODE: **GNEK032**

FINISH CODE
BSB, CP, DN, MBL

PROJECTION	KNOB DIAMETER
28MM	32MM



160MM PULL HANDLE

CODE: **GNEP160**

FINISH CODE
BSB, CP, DN, MBL

HOLE CENTRES	PROJECTION	OVERALL LENGTH	WIDTH X HEIGHT
160MM	29MM	172MM	9MM X 8MM



320MM PULL HANDLE

CODE: **GNEP320**

FINISH CODE
BSB, CP, DN, MBL

HOLE CENTRES	PROJECTION	OVERALL LENGTH	WIDTH X HEIGHT
320MM	29MM	332MM	9MM X 8MM



Finley Collection

Refined and unobtrusive, the precise form of Finley suits slab & shaker doors. Designed to be positioned horizontally, the collection embodies simplicity, functionality and elegance.
Made from Zamac. Includes fixings.

FINISHES



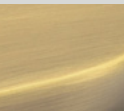
BRUSHED
NICKEL (BN)



BRUSHED
SATIN
BRASS (BSB)



CHROME
PLATED (CP)



DARK
BRUSHED
BRASS (DBB)



MATT BLACK
(MBL)



96MM PULL HANDLE

CODE: **GFINP096**

FINISH CODE
BN, BSB, CP, DBB, MBL

HOLE CENTRES	PROJECTION	OVERALL LENGTH	HEIGHT
96MM	24MM	128MM	21MM



160MM PULL HANDLE

CODE: **GFINP160**

FINISH CODE
BN, BSB, CP, DBB, MBL

HOLE CENTRES	PROJECTION	OVERALL LENGTH	HEIGHT
160MM	26MM	190MM	22MM



288MM PULL HANDLE

CODE: **GFINP288**

FINISH CODE
BN, BSB, CP, DBB, MBL

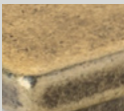
HOLE CENTRES	PROJECTION	OVERALL LENGTH	HEIGHT
288MM	29MM	334MM	27MM




Otto Collection

With its distinct blend of contemporary and traditional styling, this is the perfect transitional trio for any door. The perfect choice for those looking for versatile styling options.
A touch of urban influence gives this design a unique edge.
Made from Zamac. Includes fixings.


FINISHES



ANTIQUE
BRASS (AB)



BRUSHED SATIN
BRASS (BSB)



MATT BLACK
(MBL)



28MM KNOB

CODE: **GOTK028**

FINISH CODE
AB, BSB, MBL

PROJECTION	KNOB DIAMETER
28MM	28MM



96MM CUP HANDLE

CODE: **GOTC096**

FINISH CODE
AB, BSB, MBL

HOLE CENTRES	PROJECTION	OVERALL LENGTH	HEIGHT
96MM	22MM	133MM	25MM



160MM D HANDLE

CODE: **GOTD160**

FINISH CODE
AB, BSB, MBL

HOLE CENTRES	PROJECTION	OVERALL LENGTH	WIDTH X HEIGHT
160MM	29MM	175MM	9MM X 9MM

Aubyn Collection

This striking collection combines a beautifully faceted knob with clean concave lines on the bar handle to deliver the perfect finishing touch to your application. Finishes of Bronze, Brushed Satin Brass and Polished Nickel are available. Made from Zamac. Includes fixings.

FINISHES



BRONZE
(BRO)



**BRUSHED SATIN
BRASS (BSB)**



**POLISHED
NICKEL (PN)**



35MM KNOB

CODE: **GAUK035**

FINISH CODE
BRO, BSB, PN

PROJECTION	KNOB DIAMETER
25MM	35MM



160MM PULL HANDLE

CODE: **GAUP160**

FINISH CODE
BRO, BSB, PN

HOLE CENTRES	PROJECTION	OVERALL LENGTH	BAR THICKNESS
160MM	39MM	218MM	18MM X 18MM





Lumi Collection

A sleek duo with linear detailing, this collection personifies transitional. Clean lines, sleek profiles and a modern aesthetic, whilst still embracing traditional details that always impress.
Made from Zamac. Includes fixings.

FINISHES



ANTIQUE
BRASS (AB) ANTIQUE
PEWTER (AP) BRUSHED
SATIN
BRASS (BSB)



160MM D HANDLE

CODE: **GLUD160**

FINISH CODE
AB, AP, BSB

HOLE CENTRES	PROJECTION	OVERALL LENGTH	BAR THICKNESS
160MM	33MM	173MM	13MM



320MM D HANDLE

CODE: **GLUD320**

FINISH CODE
AB, AP, BSB

HOLE CENTRES	PROJECTION	OVERALL LENGTH	BAR THICKNESS
320MM	33MM	334MM	13MM

Clean lines, sleek profiles and a modern aesthetic, whilst still embracing traditional details that always impress.



Traditional

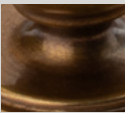
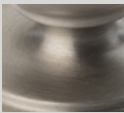


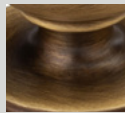
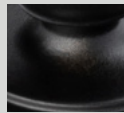
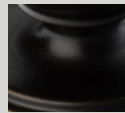




Greenwich Collection

The timeless and sophisticated design elements of British architecture inspired the creation of Greenwich. With its subtle curves and understated elegance, the collection captures the essence of classic British style that has stood the test of time.

Made from Brass. Includes fixings.

FINISHES

- 
BURNISHED
BRASS (BB)*
- 
BRUSHED
NICKEL (BN)
- 
BRUSHED
SATIN
BRASS (BSB)
- 
CHROME
PLATED (CP)
- 
DARK BRUSHED
BRASS (DBB)
- 
MATT BLACK
(MBL)
- 
OIL RUBBED
BRONZE
(ORB)
- 
POLISHED BRASS
LACQUERED
(PBL)
- 
POLISHED
NICKEL (PN)

*Living Finish - **Waxed**



29MM KNOB

CODE: **GGRK029**

FINISH CODE
BB, BN, BSB, CP, DBB, MBL, ORB, PBL, PN

PROJECTION	KNOB DIAMETER
39MM	29MM



64MM CUP HANDLE

CODE: **GGRC064**

FINISH CODE
BB, BN, BSB, CP, DBB, MBL, ORB, PBL, PN

HOLE CENTRES	PROJECTION	OVERALL LENGTH	HEIGHT
64MM	23MM	84MM	42MM



160MM PULL HANDLE

CODE: **GGRP160**

FINISH CODE
BB, BN, BSB, CP, DBB, MBL, ORB, PBL, PN

HOLE CENTRES	PROJECTION	OVERALL LENGTH
160MM	39MM	190MM



320MM PULL HANDLE

CODE: **GGRP320**

FINISH CODE
BB, BN, BSB, CP, DBB, MBL, ORB, PBL, PN

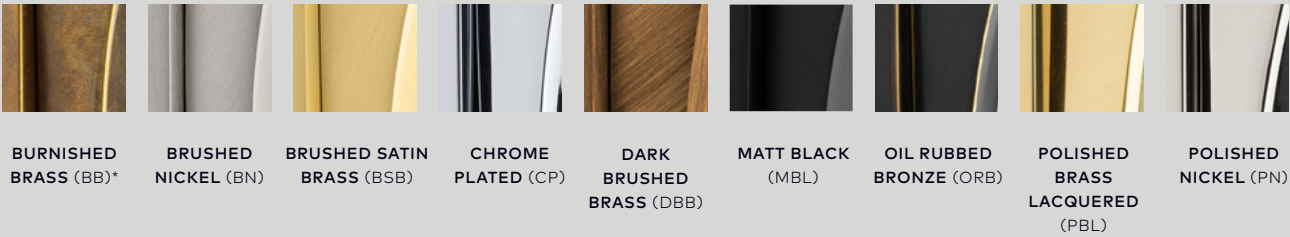
HOLE CENTRES	PROJECTION	OVERALL LENGTH
320MM	44MM	350MM



York Collection

With its intricate curve and clean lines, the design works with both solid surface and wood shelves using the included fixing pack. Finishes match Ark, Felix, Fleur & Greenwich.
Made from Brass. Includes matching fixings.
30kg load capacity per bracket.

FINISHES



*Living Finish - **Waxed**



SHELF BRACKET

CODE: **GYOSB282**

FINISH CODE
BB, BN, BSB, CP, DBB, MBL, ORB, PBL, PN

HOLE CENTRES	PROJECTION	SHELF SUPPORT	HEIGHT
255MM	205MM	195MM	282MM



FLUSH SHELF BRACKET

CODE: **GYOFSB222**

FINISH CODE
BB, BN, BSB, CP, DBB, MBL, ORB, PBL, PN






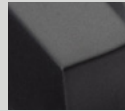
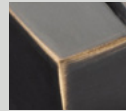


HOLE CENTRES	PROJECTION	SHELF SUPPORT	HEIGHT
167MM	205MM	205MM	222MM

Add enduring appeal and a functional decorative feature to your kitchen project with open shelving.

Westgate Collection

Designed to work seamlessly with Greenwich, the Westgate Catch Collection suits shaker cabinetry perfectly. Achieve a paired-back aesthetic whilst incorporating an effective mechanism to secure cabinet doors. Made from Brass. Includes matching fixings.

FINISHES

								
BURNISHED BRASS (BB)*	BRUSHED NICKEL (BN)	BRUSHED SATIN BRASS (BSB)	CHROME PLATED (CP)	DARK BRUSHED BRASS (DBB)	MATT BLACK (MBL)	OIL RUBBED BRONZE (ORB)	POLISHED BRASS LACQUERED (PBL)	POLISHED NICKEL (PN)

CUPBOARD LATCH

CODE: **GWECL**

FINISH CODE
BB, BN, BSB, CP, DBB, MBL, ORB, PBL, PN

PROJECTION	WIDTH X HEIGHT
38MM	18 X 53MM

CUPBOARD CATCH

CODE: **GWECC**

FINISH CODE
BB, BN, BSB, CP, DBB, MBL, ORB, PBL, PN

PROJECTION	WIDTH X HEIGHT
42MM	49 X 54MM



Callcott Collection

Quintessentially British, this heritage collection personifies Hendel & Hendel's philosophy of dedicated design and craftsmanship. Hand finished, the cup and knob combination incorporates defining stepped details on the back plate to add a unique touch. Choose from three considered cup sizes and three knob configurations, for ultimate design flexibility.





Callcott Collection

Quintessentially British, this heritage collection personifies Hendel & Hendel's philosophy of dedicated design and craftsmanship. Hand finished, the cup and knob combination incorporates defining stepped details on the back plate to add a unique touch. Choose from three considered cup sizes and three knob configurations, for ultimate design flexibility.

Made from Brass. Includes fixings.

FINISHES

					
BURNISHED BRASS (BB)*	BRUSHED NICKEL (BN)	BRUSHED SATIN BRASS (BSB)	DARK BRUSHED BRASS (DBB)	MATT BLACK (MBL)	POLISHED NICKEL (PN)

*Lacquered

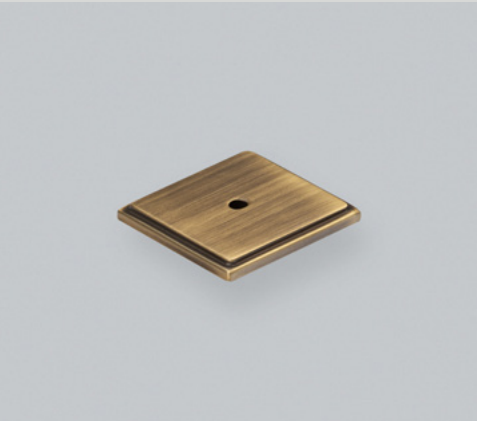


34MM KNOB

CODE: **GCALK034**

FINISH CODE
BB, BN, BSB, DBB, MBL, PN

PROJECTION	KNOB DIAMETER
33MM	34MM



38MM SQUARE BACKPLATE

CODE: **GCALBP038**

FINISH CODE
BB, BN, BSB, DBB, MBL, PN

OVERALL LENGTH	HEIGHT	BACKPLATE THICKNESS
38MM	38MM	4MM



76MM RECTANGLE BACKPLATE

CODE: **GCALBP076**

FINISH CODE
BB, BN, BSB, DBB, MBL, PN

OVERALL LENGTH	HEIGHT	BACKPLATE THICKNESS
76MM	38MM	4MM



64MM CUP HANDLE

CODE: **GCALC064**

FINISH CODE
BB, BN, BSB, DBB, MBL, PN

HOLE CENTRES	PROJECTION	OVERALL LENGTH	HEIGHT
64MM	21MM	92MM	40MM



128MM CUP HANDLE

CODE: **GCALC128**

FINISH CODE
BB, BN, BSB, DBB, MBL, PN

HOLE CENTRES	PROJECTION	OVERALL LENGTH	HEIGHT
128MM	21MM	156MM	40MM



192MM CUP HANDLE

CODE: **GCALC192**

FINISH CODE
BB, BN, BSB, DBB, MBL, PN

HOLE CENTRES	PROJECTION	OVERALL LENGTH	HEIGHT
192MM	21MM	220MM	40MM

Quintessentially British,
made from Brass.

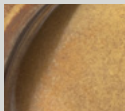




Fleur Collection

This beautiful two-piece collection features elegant soft lines and works perfectly on shaker cabinetry. Made from Brass. Includes fixings.

FINISHES



BURNISHED
BRASS (BB)*



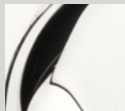
BRUSHED
NICKEL (BN)



BRUSHED SATIN
BRASS (BSB)



MATT BLACK
(MBL)



POLISHED
NICKEL (PN)



32MM KNOB

CODE: **GFLK032**

FINISH CODE
BB, BN, BSB, MBL, PN

PROJECTION	KNOB DIAMETER
34MM	32MM



96MM CUP HANDLE

CODE: **GFLC096**

FINISH CODE
BB, BN, BSB, MBL, PN

HOLE CENTRES	PROJECTION	OVERALL LENGTH	HEIGHT
96MM	19MM	139MM	31MM

A tasteful addition to any home.
The refined geometry of
the Fleur collection will lift
traditional cabinetry.



Finsbury Collection

Designed to captivate, this majestic collection features a detailed linear bar, finial ends and fluted posts. The combination of a gold hue and brown patina creates an opulent antique brass finish. Made from Brass. Includes fixings.

FINISHES



ANTIQUE
BRASS (AB)



78MM T-BAR KNOB

CODE: **GFIK078**

FINISH CODE
AB

PROJECTION	OVERALL LENGTH	BAR THICKNESS
40MM	78MM	14MM



160MM BAR HANDLE

CODE: **GFIB160**

FINISH CODE
AB

HOLE CENTRES	PROJECTION	OVERALL LENGTH	BAR THICKNESS
160MM	40MM	238MM	14MM



448MM BAR HANDLE

CODE: **GFIB448**

FINISH CODE
AB

HOLE CENTRES	PROJECTION	OVERALL LENGTH	BAR THICKNESS
224MM X 2	40MM	526MM	14MM

Hampton Collection

A heritage design classic, the collection works effortlessly with shaker cabinetry. Choose from one of five finishes including timeless Bronze.





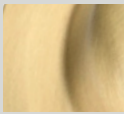
Hampton Collection

A heritage design classic, the collection works effortlessly with shaker cabinetry.
Choose from one of five finishes including timeless Bronze.
Made from Zamac. Includes fixings.

FINISHES



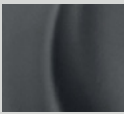
BRONZE
(BRO)



BRUSHED
SATIN
BRASS (BSB)



DULL NICKEL
(DN)



MATT BLACK
(MBL)



POLISHED
NICKEL (PN)



32MM KNOB

CODE: **GHAK032**

FINISH CODE
BRO, BSB, DN, MBL, PN

PROJECTION	KNOB DIAMETER
37MM	32MM



96MM CUP HANDLE

CODE: **GHAC096**

FINISH CODE
BRO, BSB, DN, MBL, PN

HOLE CENTRES	PROJECTION	OVERALL LENGTH	HEIGHT
96MM	23MM	122MM	39MM



160MM CUP HANDLE

CODE: **GHAC160**

FINISH CODE
BRO, BSB, DN, MBL, PN

HOLE CENTRES	PROJECTION	OVERALL LENGTH	HEIGHT
160MM	24MM	195MM	42MM



160MM D HANDLE

CODE: **GHAD160**

FINISH CODE
BRO, BSB, DN, MBL, PN

HOLE CENTRES	PROJECTION	OVERALL LENGTH	WIDTH X HEIGHT
160MM	27MM	167MM	17MM X 5MM



Trafalgar Collection

A timeless classic, reinvented. Featuring sophisticated curves and exquisite finishes. This is an essential collection with generous design proportions, manufactured with meticulous care and attention to fine detail. Made from Zamac. Includes fixings.

FINISHES

						
ANTIQUE PEWTER (AP)	BRONZE (BRO)	BRUSHED SATIN BRASS (BSB)	DARK BRUSHED BRASS (DBB)	DULL NICKEL (DN)	MATT BLACK (MBL)	POLISHED NICKEL (PN)

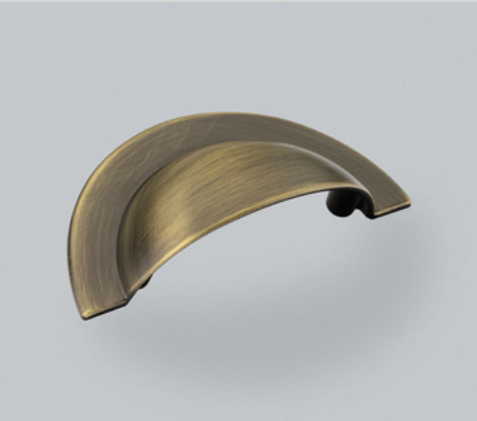


38MM KNOB

CODE: **GTRK038**

FINISH CODE
AP, BRO, BSB, DBB, DN, MBL, PN

PROJECTION	KNOB DIAMETER
37MM	38MM



64MM CUP HANDLE

CODE: **GTRC064**

FINISH CODE
AP, BRO, BSB, DBB, DN, MBL, PN

HOLE CENTRES	PROJECTION	OVERALL LENGTH	HEIGHT
64MM	29MM	102MM	47MM



96MM BOW HANDLE

CODE: **GTRB096**

FINISH CODE
AP, BRO, BSB, DBB, DN, MBL, PN

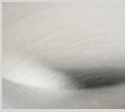
HOLE CENTRES	PROJECTION	OVERALL LENGTH	WIDTH X HEIGHT
96MM	27MM	142MM	18MM X 6MM



Charlbury Collection

An established all-time favourite. This cup will flush fit onto the cabinet for ease of fitting. Paired with a delicate cabinet knob for understated appeal. The perfect accompaniment for a wide range of furniture designs. Made from Zamac. Includes fixings.

FINISHES



BRUSHED
NICKEL (BN)



CHROME
PLATED (CP)



30MM KNOB

CODE: **GCHK030**

FINISH CODE
BN, CP

PROJECTION	KNOB DIAMETER
27MM	30MM



76MM CUP HANDLE

CODE: **GCHC076**

FINISH CODE
BN, CP

HOLE CENTRES	PROJECTION	OVERALL LENGTH	OVERALL HEIGHT
76MM	29MM	106MM	41MM



COCO 38MM KNOB

CODE: **GCOK038**

FINISH CODE
BN, CP

PROJECTION	KNOB DIAMETER
26MM	38MM

Jago Collection

Designed to elevate traditional spaces, with its soft undulating lines and considered form.
Made from Zamac. Includes fixings.

FINISHES



ANTIQUE
BRASS (AB)



ANTIQUE
PEWTER (AP)



BRUSHED
SATIN
BRASS (BSB)



CHROME
PLATED (CP)



160MM D HANDLE

CODE: **GJAD160**

FINISH CODE
AB, AP, BSB, CP

HOLE CENTRES	PROJECTION	OVERALL LENGTH	WIDTH X HEIGHT
160MM	33MM	175MM	11MM X 12MM





Ivo Collection

When all you need is that grand, statement piece – bold, but elegant.
Add the perfect finishing touch with Ivo.
Made from Aluminium. Includes fixings.

FINISHES



BRONZE
(BRO)



**BRUSHED
SATIN BRASS**
(BSB)



**POLISHED
NICKEL (PN)**



45MM KNOB

CODE: **GIVK045**

FINISH CODE
BRO, BSB, PN

PROJECTION
32MM

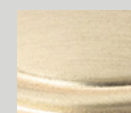
KNOB DIAMETER
45MM



Ilsa Collection

This Ilsa design features confident lines that will add that final flourish to your room.
Made from Zamac. Includes fixings.

FINISHES



**BRUSHED SATIN
BRASS (BSB)**



**POLISHED
NICKEL (PN)**



38MM KNOB

CODE: **GILK038**

FINISH CODE
BSB, PN

PROJECTION
45MM

KNOB DIAMETER
38MM



Contemporary

Conic Collection

With precise curves and contours, the minimalist aesthetic of Conic embodies contemporary design. The attention to detail is second to none, with the recessed face reflected in the curved back.





Conic Collection

With precise curves and contours, the minimalist aesthetic of Conic embodies contemporary design. The attention to detail is second to none, with the recessed face reflected in the curved back.
Made from Zamac. Includes fixings.

FINISHES



BRUSHED
NICKEL (BN)



BRUSHED SATIN
BRASS (BSB)



CHROME
PLATED (CP)



DARK BRUSHED
BRASS (DBB)



MATT BLACK
(MBL)



20MM KNOB

CODE: **GCONK020**

FINISH CODE
BN, BSB, CP, DBB, MBL

PROJECTION	KNOB DIAMETER
34MM	20MM



78MM T-BAR KNOB

CODE: **GCONK078**

FINISH CODE
BN, BSB, CP, DBB, MBL

PROJECTION	OVERALL LENGTH
34MM	78MM



160MM PULL HANDLE

CODE: **GCONP160**

FINISH CODE
BN, BSB, CP, DBB, MBL

HOLE CENTRES	PROJECTION	OVERALL LENGTH
160MM	34MM	181MM



320MM PULL HANDLE

CODE: **GCONP320**

FINISH CODE
BN, BSB, CP, DBB, MBL

HOLE CENTRES	PROJECTION	KNOB DIAMETER
320MM	35.5MM	341MM

Lindum Collection

Defined by the distinctive spliced foot design and soft oval bar, Lindum embodies contemporary design with its intriguing focal points.





Lindum Collection

Defined by the distinctive spliced foot design and soft oval bar, Lindum embodies contemporary design with its intriguing focal points.
Made from Zamac. Includes fixings.

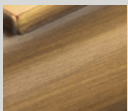
FINISHES



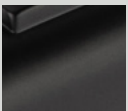
BRUSHED
NICKEL (BN)



BRUSHED SATIN
BRASS (BSB)



DARK BRUSHED
BRASS (DBB)



MATT BLACK
(MBL)



POLISHED
NICKEL (PN)



80MM T-BAR KNOB

CODE: **GLINK080**

FINISH CODE
BN, BSB, DBB, MBL, PN

PROJECTION	OVERALL LENGTH	BAR THICKNESS
37MM	80MM	11.5MM



160MM PULL HANDLE

CODE: **GLINP160**

FINISH CODE
BN, BSB, DBB, MBL, PN

HOLE CENTRES	PROJECTION	BAR THICKNESS
160MM	37MM	11.5MM

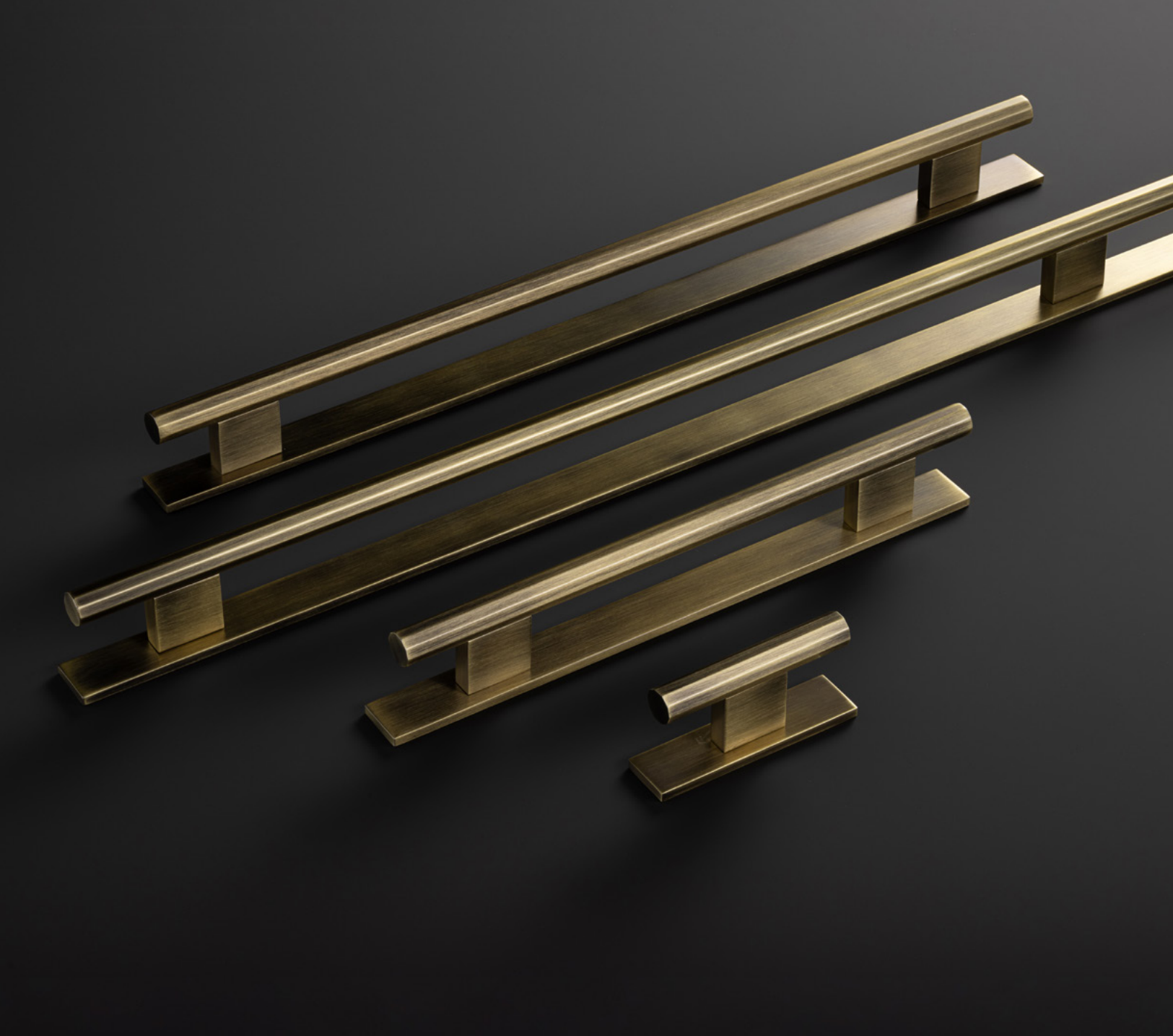


320MM PULL HANDLE

CODE: **GLINP320**

FINISH CODE
BN, BSB, DBB, MBL, PN

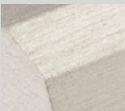
HOLE CENTRES	PROJECTION	BAR THICKNESS
320MM	43MM	11.5MM



Dixton Collection

Characterised by ten symmetrical geometric facets, Dixon suits contemporary, refined cabinet doors. Clean lines flow across each piece, providing a cohesive hardware choice for modern interiors.
Made from Aluminium. Includes fixings.

FINISHES



BRUSHED NICKEL (BN)



BRUSHED SATIN BRASS (BSB)



CHROME PLATED (CP)



DARK BRUSHED BRASS (DBB)



MATT BLACK (MBL)



72MM T-BAR KNOB

CODE: **GDIK016**

FINISH CODE
BN, BSB, CP, DBB, MBL

HOLE CENTRES	PROJECTION	OVERALL LENGTH	BAR THICKNESS
16MM	34MM	72MM	12MM



160MM BAR HANDLE

CODE: **GDIB160**

FINISH CODE
BN, BSB, CP, DBB, MBL

HOLE CENTRES	PROJECTION	OVERALL LENGTH	BAR THICKNESS
160MM	34MM	232MM	12MM



320MM BAR HANDLE

CODE: **GDIB320**

FINISH CODE
BN, BSB, CP, DBB, MBL

HOLE CENTRES	PROJECTION	OVERALL LENGTH	BAR THICKNESS
320MM	34MM	392MM	12MM



768MM BAR HANDLE

CODE: **GDIB768**

FINISH CODE
BN, BSB, CP, DBB, MBL

HOLE CENTRES	PROJECTION	OVERALL LENGTH	BAR THICKNESS
384MM X 2	34MM	840MM	12MM

78MM BACKPLATE FOR T-BAR KNOB

CODE: **GU04BP016**

FINISH CODE
BN, BSB, CP, DBB, MBL

HOLE CENTRES	OVERALL LENGTH	HEIGHT	BACKPLATE THICKNESS
16MM	78MM	19MM	4MM

160MM BACKPLATE FOR PULL HANDLE

CODE: **GU04BP160**

FINISH CODE
BN, BSB, CP, DBB, MBL

HOLE CENTRES	OVERALL LENGTH	HEIGHT	BACKPLATE THICKNESS
160MM	238MM	19MM	4MM

320MM BACKPLATE FOR PULL HANDLE

CODE: **GU04BP320**

FINISH CODE
BN, BSB, CP, DBB, MBL

HOLE CENTRES	OVERALL LENGTH	HEIGHT	BACKPLATE THICKNESS
320MM	398MM	19MM	4MM

768MM BACKPLATE FOR PULL HANDLE

CODE: **GU04BP768**

FINISH CODE
BN, BSB, CP, DBB, MBL

HOLE CENTRES	OVERALL LENGTH	HEIGHT	BACKPLATE THICKNESS
384MM X 2	855MM	19MM	4MM



Battersea Collection

Embodying the iconic design of Battersea Power Station, the collection is characterised by its distinctive linear grooves. The texture enhances the simple silhouette to give a tactile, striking finish. Where Art Deco styling meets contemporary, the epitome of form and function.





Battersea Collection

Embodying the iconic design of Battersea Power Station, the collection is characterised by its distinctive linear grooves. The texture enhances the simple silhouette to give a tactile, striking finish. Where Art Deco styling meets contemporary, the epitome of form and function.

Made from Zamac. Includes fixings.

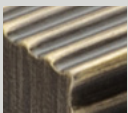
FINISHES



BRUSHED SATIN BRASS (BSB)



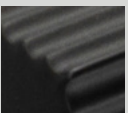
CHROME PLATED (CP)



DARK BRUSHED BRASS (DBB)



DULL NICKEL (DN)



MATT BLACK (MBL)

60MM T-BAR KNOB

CODE: **GBATK060**

FINISH CODE
BSB, CP, DBB, DN, MBL



PROJECTION	OVERALL LENGTH	BAR THICKNESS
30MM	60MM	10MM

160MM PULL HANDLE

CODE: **GBATP160**

FINISH CODE
BSB, CP, DBB, DN, MBL



HOLE CENTRES	PROJECTION	OVERALL LENGTH	BAR THICKNESS
160MM	30MM	169MM	10MM

320MM PULL HANDLE

CODE: **GBATP320**

FINISH CODE
BSB, CP, DBB, DN, MBL



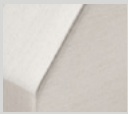
HOLE CENTRES	PROJECTION	OVERALL LENGTH	BAR THICKNESS
320MM	30MM	329MM	10MM



Quinn Collection

An attractive suite of three pull handles with design detail on the inside and outside of the handle ends. Angular and exciting.
Made from Zamac. Includes fixings.

FINISHES



BRUSHED
NICKEL (BN)



BRUSHED
SATIN
BRASS (BSB)



CHROME
PLATED (CP)



DARK
BRUSHED
BRASS (DBB)



MATT BLACK
(MBL)



160MM D HANDLE

CODE: **GQUIP160**

FINISH CODE
BN, BSB, CP, DBB, MBL

HOLE CENTRES	PROJECTION	OVERALL LENGTH	WIDTH X HEIGHT
160MM	29MM	174MM	8 X 8.5MM



192MM D HANDLE

CODE: **GQUIP192**

FINISH CODE
BN, BSB, CP, DBB, MBL

HOLE CENTRES	PROJECTION	OVERALL LENGTH	WIDTH X HEIGHT
192MM	29MM	206MM	8 X 8.5MM



320MM D HANDLE

CODE: **GQUIP320**

FINISH CODE
BN, BSB, CP, DBB, MBL

HOLE CENTRES	PROJECTION	OVERALL LENGTH	WIDTH X HEIGHT
320MM	29MM	334MM	8 X 8.5MM

Reba Collection

Inspired by the power of nature's elements, this textured piece is wonderfully tactile, available in three exquisite finishes. Perfectly suited for contemporary furniture applications. Made from Zamac. Includes fixings.

FINISHES



POLISHED
NICKEL (PN)



SATIN BRASS
(SB)



SATIN COPPER
(SC)



192MM BAR HANDLE

CODE: **GREB192**

FINISH CODE
PN, SB, SC

HOLE CENTRES	PROJECTION	OVERALL LENGTH	BAR THICKNESS
192MM	33MM	211MM	13MM

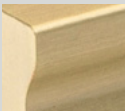




Jura Collection

A modest yet sophisticated collection. Understated with its ridged indent design feature to add that unique finishing touch and make this piece truly functional.
Made from Aluminium. Includes fixings.

FINISHES



BRUSHED SATIN
BRASS (BSB)



POLISHED
NICKEL (PN)



32MM HANDLE

CODE: **GJUP032**

FINISH CODE
BSB, PN

HOLE CENTRES	PROJECTION	OVERALL LENGTH	BAR THICKNESS
32MM	23MM	46MM	10MM



160MM HANDLE

CODE: **GJUP160**

FINISH CODE
BSB, PN

HOLE CENTRES	PROJECTION	OVERALL LENGTH	BAR THICKNESS
160MM	23MM	174MM	10MM



320MM HANDLE

CODE: **GJUP320**

FINISH CODE
BSB, PN

HOLE CENTRES	PROJECTION	OVERALL LENGTH	BAR THICKNESS
320MM	23MM	334MM	10MM

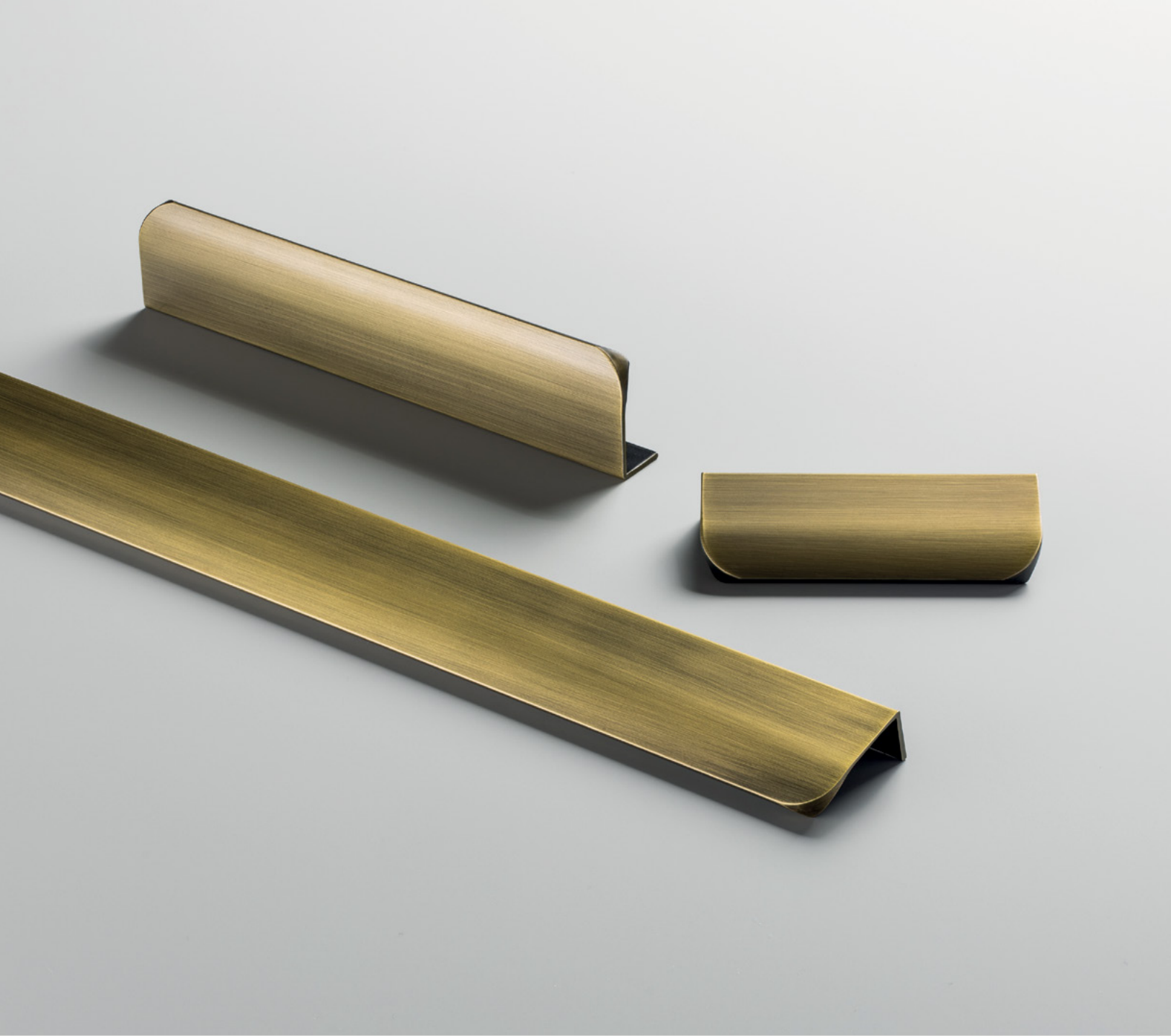


576MM HANDLE

CODE: **GJUP576**

FINISH CODE
BSB, PN

HOLE CENTRES	PROJECTION	OVERALL LENGTH	BAR THICKNESS
288MM X 2	23MM	622MM	10MM



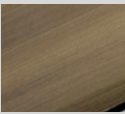
Edison Collection

Clean, elegant and distinctive. This pull collection promises to add a soft, sleek accent to your modern interior. With its elegantly tapered edges, this design is beautifully balanced and works seamlessly on both slab and shaker style doors. Made from Aluminium. Includes fixings.

FINISHES



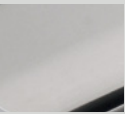
BRUSHED SATIN BRASS (BSB)



DARK BRUSHED BRASS (DBB)



MATT BLACK (MBL)



POLISHED NICKEL (PN)



64MM PROFILE HANDLE

CODE: **GEDP064**

FINISH CODE
BSB, DBB, MBL, PN

HOLE CENTRES	PROJECTION	OVERALL LENGTH	HEIGHT
64MM	41MM	100MM	18MM



128MM PROFILE HANDLE

CODE: **GEDP128**

FINISH CODE
BSB, DBB, MBL, PN

HOLE CENTRES	PROJECTION	OVERALL LENGTH	HEIGHT
128MM	41MM	200MM	18MM



256MM PROFILE HANDLE

CODE: **GEDP256**

FINISH CODE
BSB, DBB, MBL, PN

HOLE CENTRES	PROJECTION	OVERALL LENGTH	HEIGHT
256MM	41MM	351MM	18MM

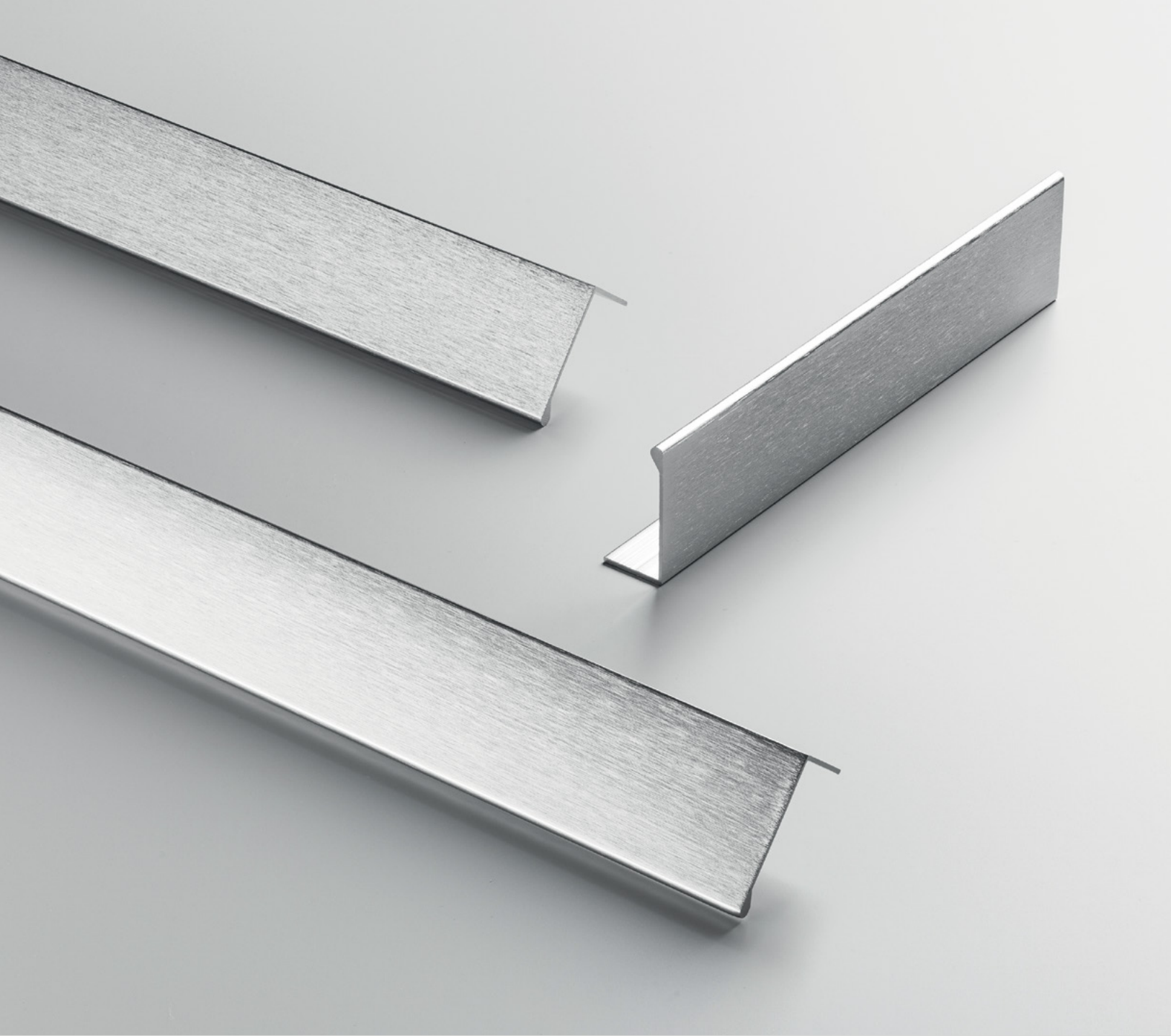


864MM PROFILE HANDLE

CODE: **GEDP864**

FINISH CODE
BSB, DBB, MBL, PN

HOLE CENTRES	PROJECTION	OVERALL LENGTH	HEIGHT
288MM X 3	41MM	900MM	18MM



Lincoln Collection

A minimalist, wrap around profile handle. Lincoln is designed for contemporary spaces.
Made from Aluminium. Includes fixings.

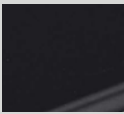
FINISHES



BRUSHED
NICKEL (BN)



BRUSHED
SATIN
BRASS (BSB)



MATT BLACK
(MBL)

128MM PROFILE HANDLE

CODE: **GLIP128**

FINISH CODE
BN, BSB, MBL

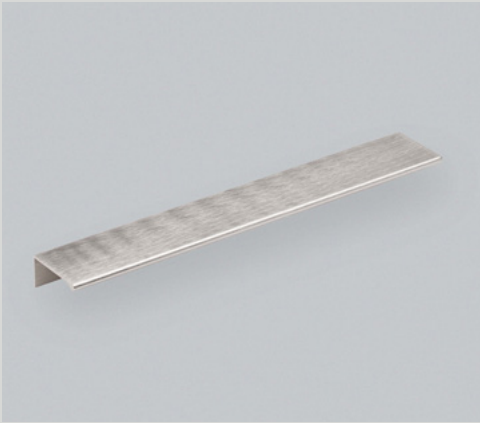


HOLE CENTRES	PROJECTION	OVERALL LENGTH	HEIGHT
128MM	43MM	200MM	20MM

192MM PROFILE HANDLE

CODE: **GLIP192**

FINISH CODE
BN, BSB, MBL



HOLE CENTRES	PROJECTION	OVERALL LENGTH	HEIGHT
192MM	43MM	250MM	20MM

768MM PROFILE HANDLE

CODE: **GLIP768**

FINISH CODE
BN, BSB, MBL



HOLE CENTRES	PROJECTION	OVERALL LENGTH	HEIGHT
384MM X 2	43MM	800MM	20MM

Evora Collection

Refined and discreet, the Evora collection will add a touch of sophistication to a contemporary home.
Made from Zamac. Includes fixings.

FINISHES



BRUSHED
NICKEL (BN)



CHROME
PLATED (CP)



SATIN BRASS
(SB)



MATT BLACK
(MBL)



24MM KNOB

CODE: **GEVK024**

FINISH CODE
BN, CP, SB, MBL

PROJECTION	KNOB DIAMETER
29MM	24MM

Kellas Collection

Achieving the perfect balance of design and functionality, Kellas suits a wide range of design applications. The knurled texture adds a refined tactile feel to the design.





Kellas Collection

Achieving the perfect balance of design and functionality, Kellas suits a wide range of design applications. The knurled texture adds a refined tactile feel to the design.
Made from Aluminium. Includes fixings.

FINISHES



BRUSHED
ANODISED (BA)



MATT BLACK
(MBL)



SATIN BRASS
(SB)



60MM T-BAR KNOB

CODE: **GKEK060**

FINISH CODE
BA, MBL, SB

PROJECTION	OVERALL LENGTH	BAR THICKNESS
33MM	60MM	10MM



160MM BAR HANDLE

CODE: **GKEB160**

FINISH CODE
BA, MBL, SB

HOLE CENTRES	PROJECTION	OVERALL LENGTH	BAR THICKNESS
160MM	33MM	168MM	10MM



256MM BAR HANDLE

CODE: **GKEB256**

FINISH CODE
BA, MBL, SB

HOLE CENTRES	PROJECTION	OVERALL LENGTH	BAR THICKNESS
256MM	33MM	265MM	10MM



768MM BAR HANDLE

CODE: **GKEB768**

FINISH CODE
BA, MBL, SB

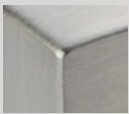
HOLE CENTRES	PROJECTION	OVERALL LENGTH	BAR THICKNESS
384MM X 2	33MM	776MM	10MM



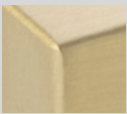
Milano Collection

Perfect simplicity, 90 degree angles in a range of modern finishes.
Made from Zamac. Includes fixings.

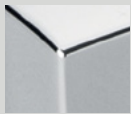
FINISHES



BRUSHED
NICKEL (BN)



BRUSHED SATIN
BRASS (BSB)



CHROME
PLATED (CP)



MATT
BRUSHED
COPPER (MBC)



MATT BLACK
(MBL)



160MM D HANDLE

CODE: **GMID160**

FINISH CODE
BN, BSB, CP, MBC, MBL

HOLE CENTRES	PROJECTION	OVERALL LENGTH	WIDTH X HEIGHT
160MM	28MM	169MM	9MM X 9MM



320MM D HANDLE

CODE: **GMID320**

FINISH CODE
BN, BSB, CP, MBL

HOLE CENTRES	PROJECTION	OVERALL LENGTH	WIDTH X HEIGHT
320MM	28MM	329MM	9MM X 9MM

A modernist classic, the Milano
is a simple and sophisticated way
to lift any room.



Coleby Collection

Bold circular design and clean lines are a trademark of this collection.
Three finish additions give a modern touch to the classic form.
Made from Steel. Includes fixings.

FINISHES



ANTIQUE
COPPER (AC)



BRUSHED
NICKEL (BN)



BRUSHED
SATIN
BRASS (BSB)



MATT BLACK
(MBL)

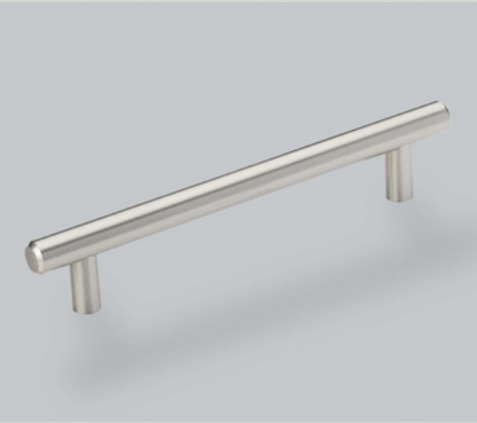


96MM BAR HANDLE

CODE: **GCOB096**

FINISH CODE
AC, BN, BSB, MBL

HOLE CENTRES	PROJECTION	OVERALL LENGTH	BAR THICKNESS
96MM	32MM	136MM	12MM



128MM BAR HANDLE

CODE: **GCOB128**

FINISH CODE
AC, BN, BSB, MBL

HOLE CENTRES	PROJECTION	OVERALL LENGTH	BAR THICKNESS
128MM	32MM	168MM	12MM



160MM BAR HANDLE

CODE: **GCOB160**

FINISH CODE
AC, BN, BSB, MBL

HOLE CENTRES	PROJECTION	OVERALL LENGTH	BAR THICKNESS
160MM	32MM	230MM	12MM



256MM BAR HANDLE

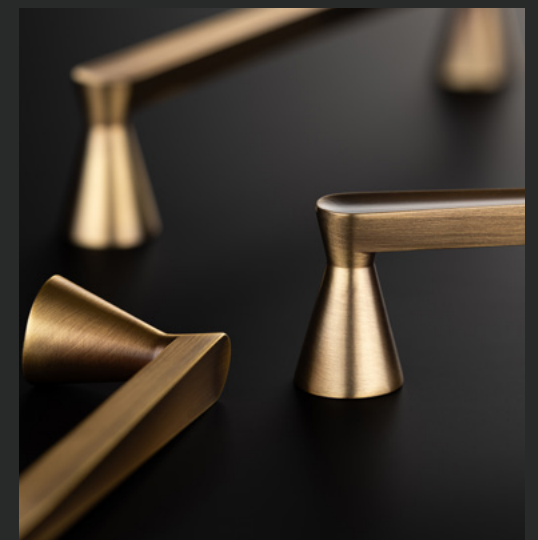
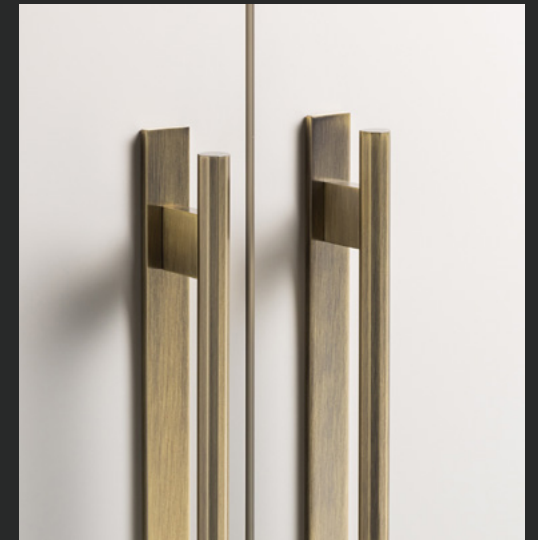
CODE: **GCOB256**

FINISH CODE
AC, BN, BSB, MBL

HOLE CENTRES	PROJECTION	OVERALL LENGTH	BAR THICKNESS
256MM	32MM	326MM	12MM

Discover handles worth
talking about at:

 @hendelandhendel



Contact Us

hello@hendelandhendel.co.uk | 0333 888 0488 | hendelandhendel.co.uk
2 Crofton Road, Allenby Road Industrial Estate, Lincoln, LN3 4NL



HENDEL & HENDEL