

2026

STUDIO VIVRE



KITCHENS

Beautifully Crafted Kitchens

MANUFACTURING
40YRS

With over 40 years of experience crafting kitchen doors, we know that quality isn't just important, it's essential.



Designed for Living. Built with Savoir-Faire.

More than just a place to cook, your kitchen is the heart of your home - a space where meals are shared, conversations flow and memories are made. At Studio Vivre, we believe your kitchen should be as welcoming as it is functional, reflecting your style while bringing warmth and inspiration to everyday living.

Explore our thoughtfully designed furniture collections to create a space that feels truly yours, whatever your lifestyle, whatever your vision.

STUDIO VIVRE is a Trade Mouldings Brand.



CONTENTS

— 04

Shaker Collection

Balmoral	04
Berkeley	08
Boston	10
Buckingham	12
Rivington	18

— 20

Modern Collection

Fenton	20
Odyssey	26
Cleveland	30
Larissa	32
Vogue	36

— 40

Painted Collection

Albany	40
Hadfield	44
Malham	48

— 52

Made To Measure Collection

Colour Options	54
Door Options	55

— 66

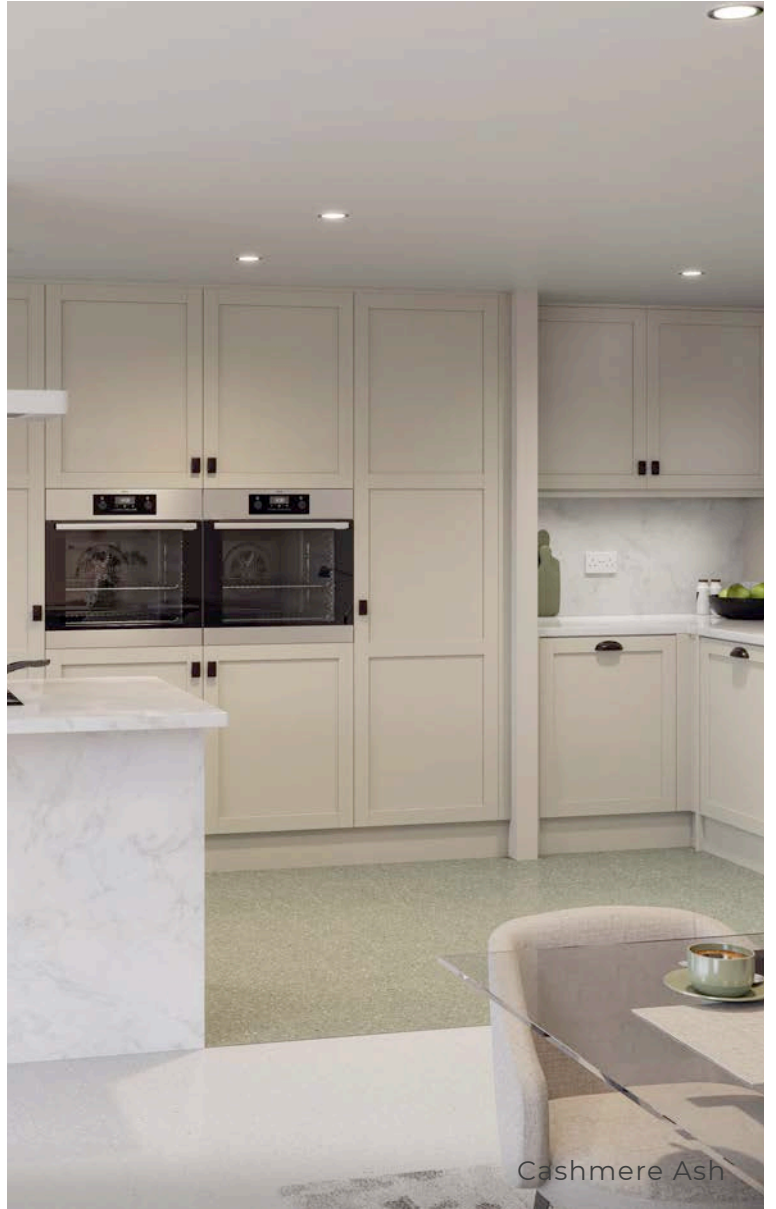
Handle Collection

66

SHAKER

Our shaker doors are timeless and versatile, they are a perfect choice for kitchens that balance elegance with everyday practicality.

Balmoral



Our Balmoral 5 piece shaker door design, features a 60mm narrow stile and 'V' grooved joints which is finished in distinctive ash effect colours. This kitchen is suited to either contemporary or traditional surroundings.

Ogee Plinth Available with this range







Available Finishes :



Berkeley

Our Berkeley smooth vinyl-wrapped narrow shaker door, with 65mm stiles and a super matt finish, offers a touch of modern elegance while ensuring long-lasting durability.



Porcelain Super Matt

Taupe Super Matt



Also available
Made to Measure

Available Finishes :

Porcelain
Super Matt

Taupe
Super Matt

Dove Grey
Super Matt

Reed Green
Super Matt



Graphite Super Matt - MTM

Boston

Our Boston door features a seamless, one piece super matt vinyl wrap, with 110mm stiles, creating a smooth flawless shaker design that brings timeless elegance and character to any kitchen.



Fjord & White Super Matt



Mussel & Dove Grey Super Matt

Also available
Made to Measure

Available Finishes :

White
Super Matt

Mussel
Super Matt

Cashmere
Super Matt

Dove Grey
Super Matt

Fjord
Super Matt

Reed Green
Super Matt



Dust Grey Super Matt - MTM



Dove Grey & Indigo Ash

Buckingham

Our Buckingham 5 piece wide shaker door design, features 113.5mm stiles and 'V' grooved joints which is finished in distinctive ash effect colours. It's wide frame and timeless shaker profile, suits both traditional and modern kitchen schemes.

Available Finishes :

White
Ash

Ivory
Ash

Mussel
Ash

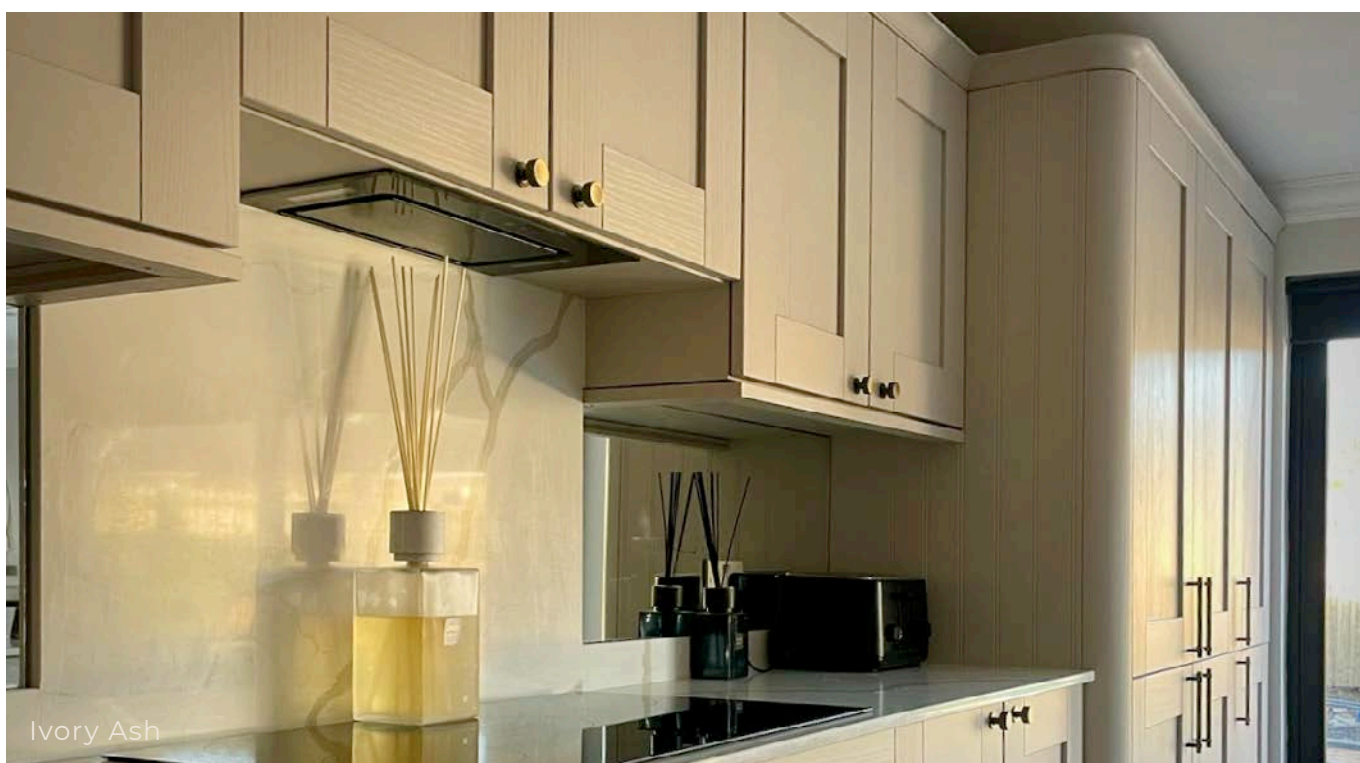
Cashmere
Ash

Dove Grey
Ash

Dakar
Ash



Dust Grey Ash



Ivory Ash





Cashmere Ash



Graphite Ash





Rivington

Rivington is a sleek and contemporary narrow 5-piece shaker door featuring a smooth finish and 75mm stiles. It provides a clean, minimalist look that suits a range of modern and traditional kitchen designs.



Dove Grey Super Matt



Cashmere Super Matt

Smooth
Finish

Available Finishes :

Dove Grey
Super Matt

Cashmere
Super Matt



Cashmere Super Matt

Clean lines, seamless finishes, and intelligent design - a sleek modern kitchen is all about effortless sophistication and designed to maximise space and function.

Fenton



Fenton features a unique paint application that provides exceptional resistance to fingerprints and a highly durable surface, making it ideal for modern kitchens. Available in seven stylish solid colours, it also offers a woodgrain option in Kala Ash along with a beautifully crafted Oak Veneer finish.

Fenton's front face has unique paint application which is then coated and activated by uv light giving it a highly durable surface. The doors are laser edged with a painted finish to match the front.





White
Matt
Painted

Porcelain
Matt
Painted

Cashmere
Matt
Painted

Dove Grey
Matt
Painted

Reed Green
Matt
Painted



Carbon Grey
Matt
Painted

Black
Matt
Painted

Kala Ash
Woodgrain

Oak
Veneer



White Matt Painted & Kala Ash



NEW

Oak Veneer

Odyssey

This acrylic faced slab door with a matching or two tone laser edge brings a premium, cutting edge look to your kitchen design.



Champagne & Anthracite Metallic

Cashmere Super Matt



Gloss Finishes

- White
- Cream
- Dove Grey

Metallic Finishes

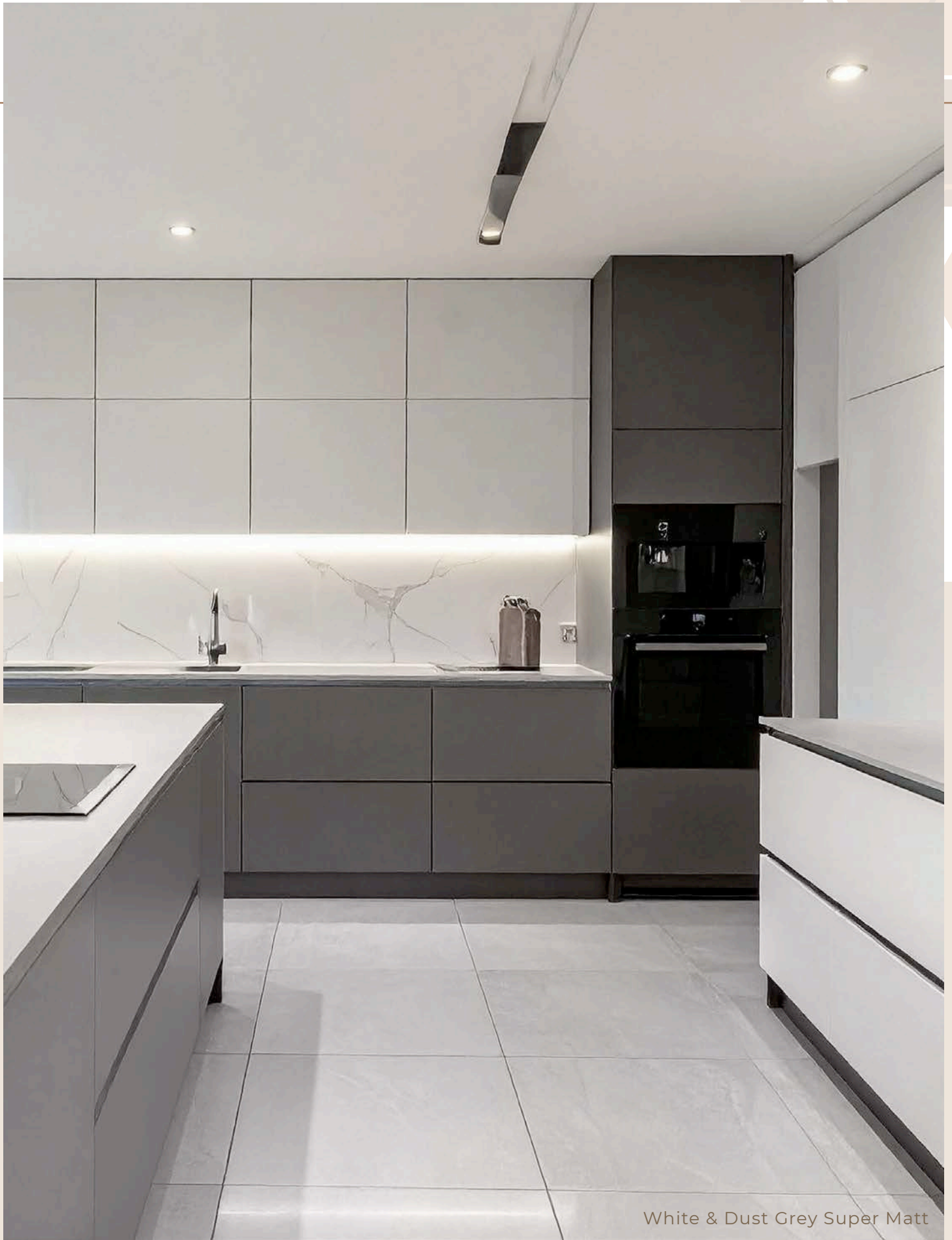
- Champagne
- Blue
- Anthracite

Super Matt Finishes

- White
- Cashmere
- Dove Grey
- Fjord
- Kombu Green
- Dust Grey
- Graphite
- Indigo



White & Dove Grey Super Matt





Cleveland

Our on trend Cleveland grooved door, adds visual detail, structure, or definition to the design.

With the choice of vertical or horizontal orientation it offers a distinctive look that adds depth and character to your space. It can be used as a striking kitchen door or as a decorative panel.



Halifax Oak & White Gloss



White Super Matt & Fenton Oak Veneer



Cashmere Gloss Painted

Larissa

Larissa captures modern sophistication through its 22mm painted slab design, featuring an integrated J-profile handle and available in a choice of gloss or matt finishes.

Available Finishes :

White
Gloss
Painted

Cashmere
Gloss
Painted

Dove Grey
Gloss
Painted

Dust Grey
Gloss
Painted



White
Matt
Painted

Dove Grey
Matt
Painted

Dust Grey
Matt
Painted

Indigo
Matt
Painted



Dust Grey Matt Painted



White Gloss Painted



Vogue

Vogue showcases a sleek, high-gloss painted lacquer finish with minimalist slab styling for a contemporary look that exudes effortless elegance.



White Gloss Painted



Dove Grey & White Gloss Painted

Flawless
Gloss Finish

Available Finishes:

White
Gloss
Painted

Cashmere
Gloss
Painted

Dove Grey
Gloss
Painted

Dust Grey
Gloss
Painted



White & Cashmere Gloss Painted



Dove Grey Gloss Painted

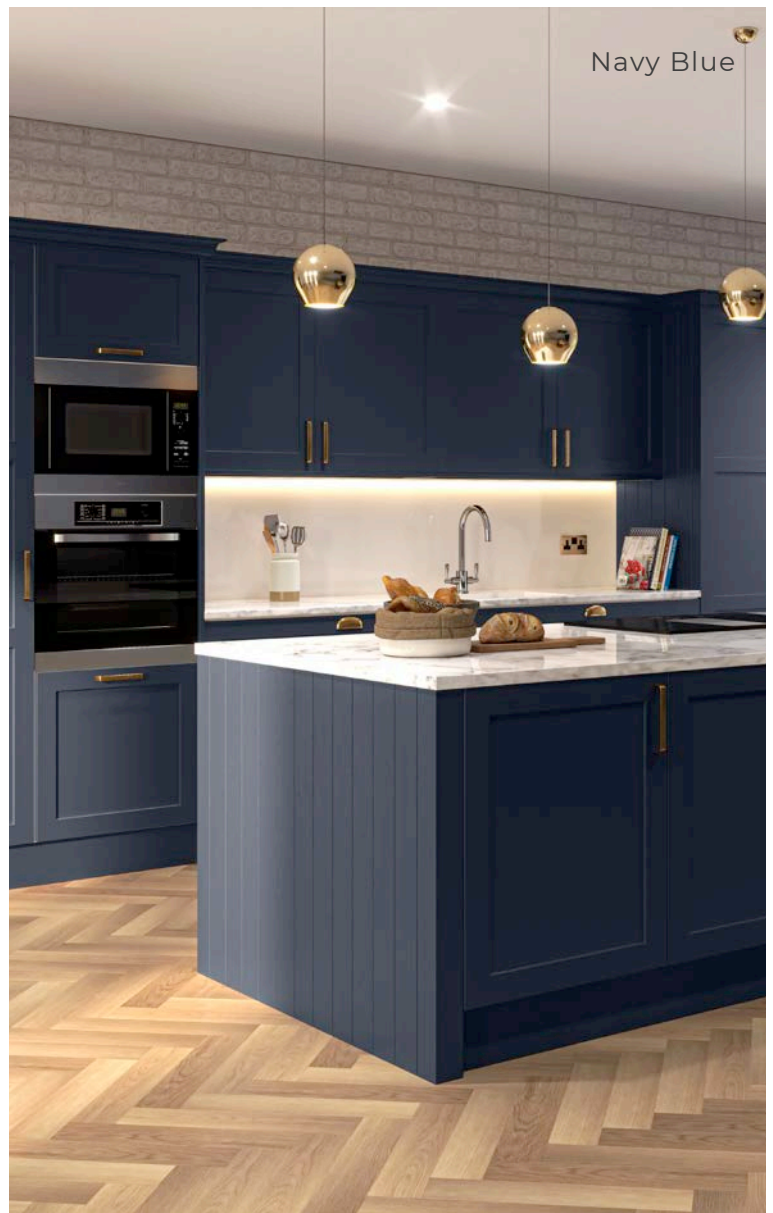


White Gloss Painted & Fenton Kala Ash



Crafted from high-quality timber, these doors combine natural beauty with lasting durability. The warmth and unique grain patterns of wood give every door its own character.

Albany



Albany

With its narrow solid ash frame and 68mm stiles, this shaker door radiates timeless style and genuine quality.

Porcelain





Dove & Dust Grey



Porcelain & Navy Blue



Hadfield

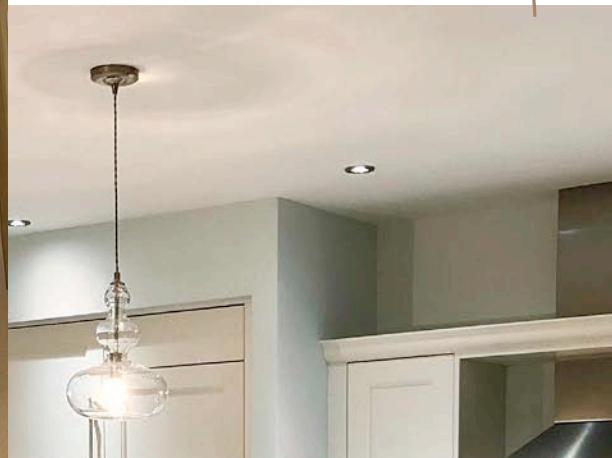
The Hadfield door showcases a classic beaded shaker style, crafted with 75mm stiles. It offers a traditional yet refined appearance.





Ivory

Beaded Shaker Design



White



Porcelain





Porcelain, Duck Egg Blue & Graphite

Malham

The Malham timber shaker door, with 'V' grooved detailing and 105mm stiles, brings timeless, traditional charm to your kitchen design.



Dove Grey & Navy Blue



Reed Green & Ivory

'V' Groove
Shaker



Porcelain & Navy Blue



Atlantic Green

PAINTED ACCESSORIES

A host of painted accessories to complete any look.



Bespoke Colours

All our timber ranges are available in any bespoke colour.



Decorative Plinths

Create a more bespoke fitted look using our ogee plinths.



Mantles

Create stunning mantles or canopies with our fully supplied kits.



Accessories

From T&G panels to curves, pilasters or multi-purpose rails, we have everything you need to create the desired look.



White

Porcelain

Ivory

Cashmere

Dove Grey

Mussel

Duck Egg Blue

Fjord

Reed Green

Sage

Atlantic Green

Dust Grey

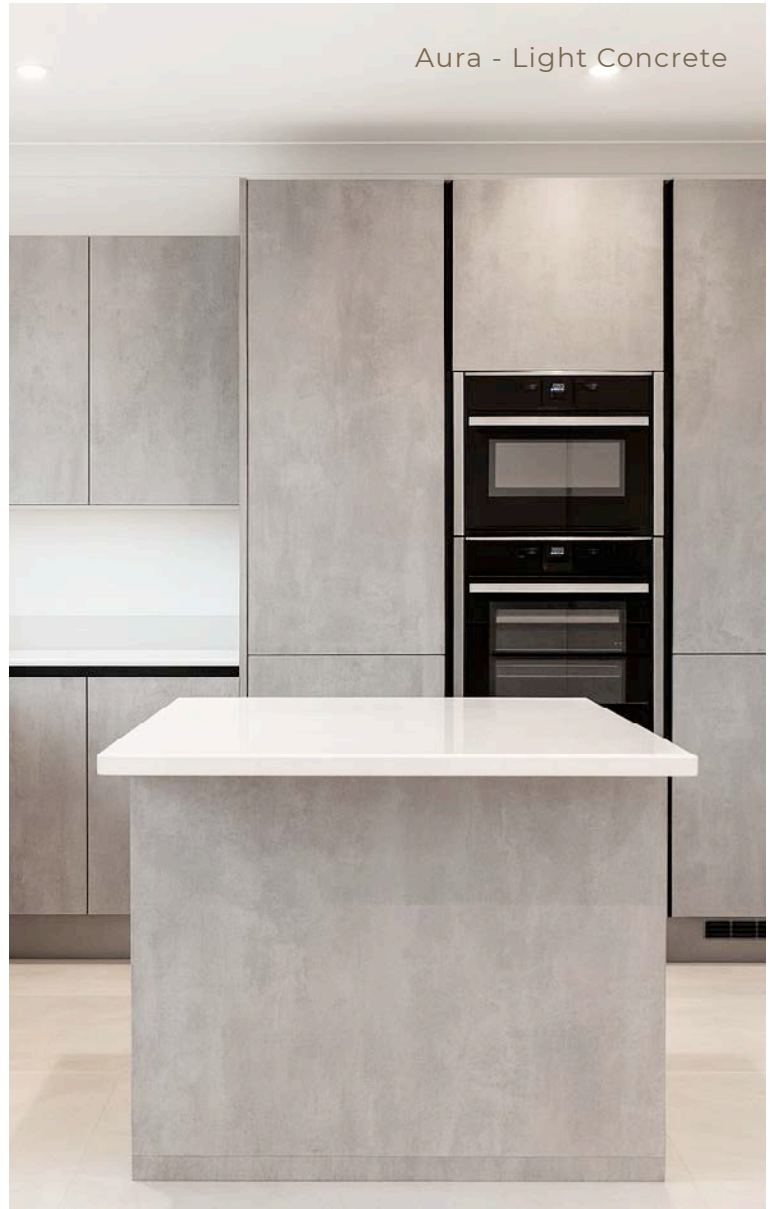
Navy Blue

Graphite

Noir Blue

Stock Colour Palette

Made to Measure



Aura - Light Concrete

Our vinyl doors give you the freedom to design a kitchen that perfectly reflects your style. Whether you're aiming for a sleek, contemporary look or a timeless, traditional feel, these doors provide a versatile solution for any home.

Durable and low-maintenance, vinyl doors resist scratches, stains, and everyday wear, making them ideal for busy kitchens while maintaining their elegant appearance for years to come.



Choose your style

A wide range of beautifully styled
made to measure wrapped doors
available in a wide variety of finishes.

SHAKER



Auckland



Berkeley



Boston



Brentwood



Burlington



Gresham



Heywood



Lunar



Mayfair



Milan



Salisbury

RAISED PANEL



Ascot



Avondale



Bowland



Bury



Cashel



Countryvale



Euroline



Gisburn



Kent



Oxford



Richmond



Sherwood



Westport

MODERN



Aries



Aura



Cleveland



Dover



Gemini



Hampshire



Hapton



Hebden



Lumi



Orion



Sofia

LASER EDGED



Fenton



Odyssey

Choose your colour

From timeless neutrals like ivory and grey to a balanced mix of warm and cool tones, our collection offers endless possibilities.

Matt



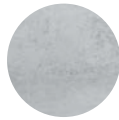
White
(Classic)



Porcelain



Ivory



Concrete
(Light)



Dakar



Concrete
(Dark)

Super Matt



White



Mussel



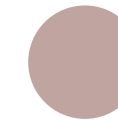
Cashmere



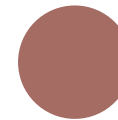
Dove Grey



Fjord



Dusty Pink



Rusty Red



Taupe



Reed Green



Stone Grey



Dust Grey



Kombu Green



Navy Blue



Graphite



Indigo



Black

Ash Embossed



White



Ivory



Mussel



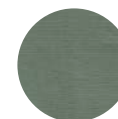
Cashmere



Dove Grey



Dakar



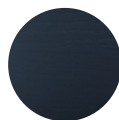
Reed Green



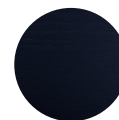
Stone Grey



Dust Grey



Navy Blue



Indigo

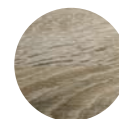
Woodgrain



Halifax Oak



Lissa Oak



Sonoma Oak

Gloss



White



Cashmere



Cream



Dove Grey



Dust Grey

Highlights from Our Vinyl Collection



Reed Green, Halifax Oak & Porcelain

Aura

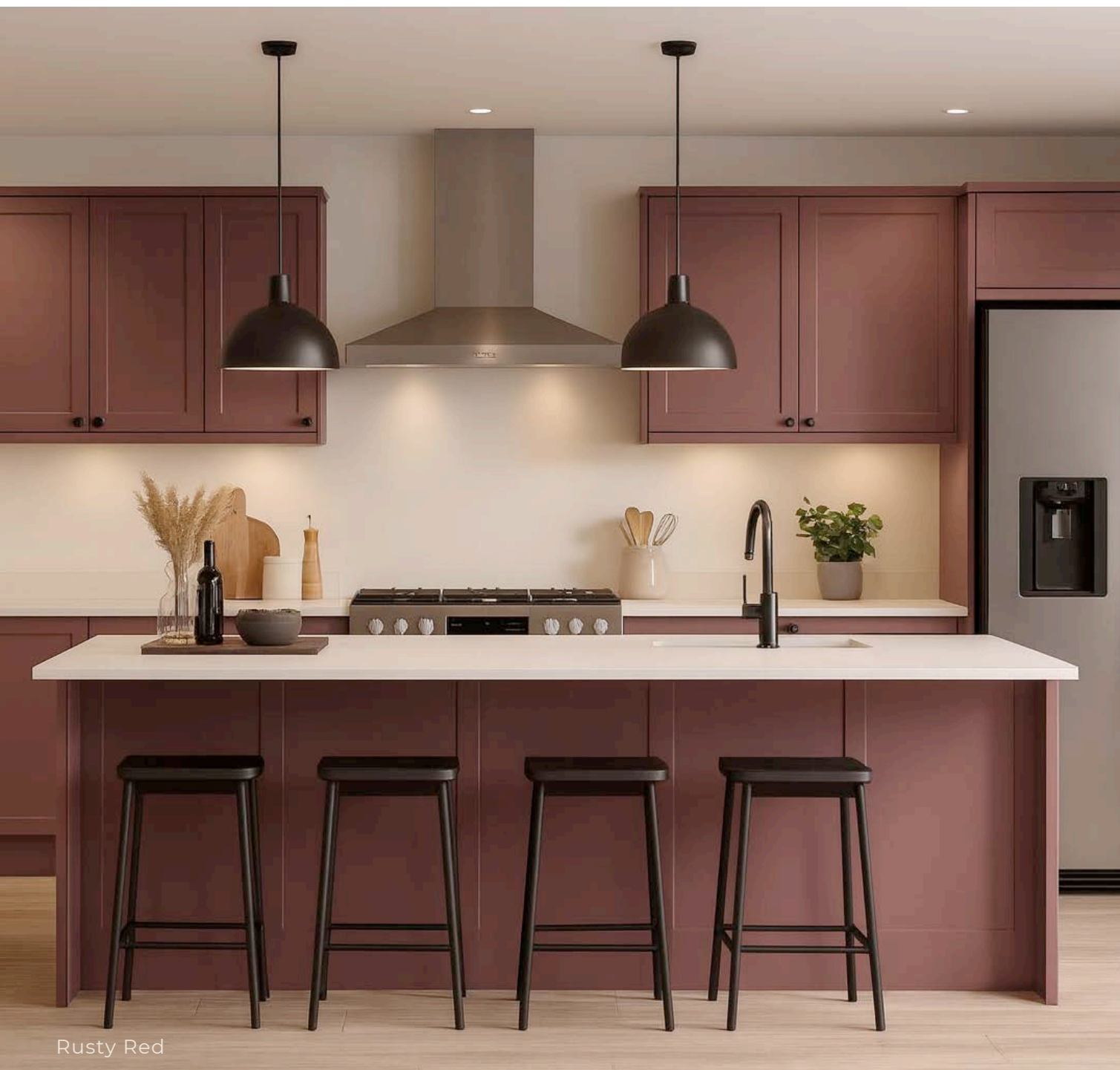
A sleek slab style door with a 2mm edge profile.



Ivory

Avondale

A tongue and groove effect to the raised centre panel adding subtle detail with 65mm stiles.



Rusty Red

Burlington

It's 50mm stiles create a beautifully balanced frame that feels lighter and more contemporary than traditional shaker proportions, giving Burlington a clean, streamlined appearance that works seamlessly across both classic and modern interiors.



Kombu Green

Gresham

A classic shaker with 100mm stiles and 'V' grooves, offering a timeless look that suits both traditional and contemporary interiors.



Reed Green

Heywood

Get the In-Frame look and create a more elegant appearance. This design adds depth and sophistication to the door giving it a classic and stylish look. Featuring a 32mm Border, with 100mm stiles.



White

Lumi

This slab style door with a 3mm bevelled edge makes it a popular choice for modern and contemporary interiors.



Mussel

Mayfair

Elevate your design with the In-Frame look. Our Mayfair door style adds depth, detail and timeless sophistication. With its 32mm border and 105mm stiles it is beautifully balanced for a classic aesthetic.



Taupe

Oxford

A deep recessed centre panel with crisp square detailing and 72mm stiles, offering a bold yet refined look.



White

Salisbury

With 100mm stiles and a chamfered centre panel, Salisbury delivers a deeper, more defined profile that brings a unique twist to traditional shaker styling.



Sofia

A 22mm contemporary slab door, defined by its understated outer edge bead, that introduces elegant profile detailing.

Handles

Matt Black

Camden



143 - Shell Handle, 96mm
142 - Rectangular Knob, 38mm
Antique Black



145 - 'D' Handle, 320mm
144 - 'D' Handle, 160mm
Antique Black



147 - 'D' Handle, 320mm
146 - 'D' Handle, 160mm

Crofton



183 - Trim Handle, 200mm
182 - Trim Handle, 60mm

Lany



191 - Knurled Handle, 160mm
Black & Chrome

Fender



201 - Textured Grip, 160mm
200 - Solid Knob, 30mm
Black Smoked

Lambeth



242 - 'D' Handle, 320mm
240 - 'D' Handle, 160mm
Antique Black

Deco



275 - Deco Handle, 320mm
270 - Deco Handle, 160mm

Windsor

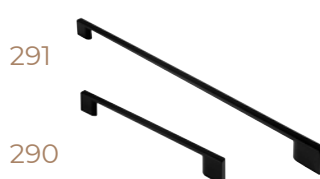


283 - Shell Handle, 96mm
281 - Round Knob, 38mm



282 - Shell Handle, 64mm
280 - Round Knob, 32mm

'D' Slim



291 - 'D' Slim Handle, 320mm
290 - 'D' Slim Handle, 160mm

Kensington



297 - Pull Handle, 200mm
296 - Pull Handle, 100mm
295 - Pull Handle, 50mm

Lisse



301 - Strap Handle, 320mm
300 - Strap Handle, 160mm

Ines



318 - 'D' Handle, 320mm
317 - 'D' Handle, 160mm
316 - Square Knob, 50mm

Renne



331 - 'D' Handle, 320mm
330 - 'D' Handle, 160mm

Anais



341 - 'D' Handle, 320mm
340 - 'D' Handle, 160mm

Linea



350 - Solid Post Knob, 30mm
351 - Solid Knob, 30mm



352a - Solid Handle, 264mm
352 - Solid Handle, 160mm

Block Bar



363 - Bar Handle, 320mm
362 - Bar Handle, 160mm

Chrome

Windsor



18 - Shell Handle, 96mm
11 - Knob & Plate, 30mm



17 - Shell Handle, 64mm
12 - Knob, 40mm



14 - Latch Handle, 96mm
15 - Latch Handle, 160mm



13 - Latch Handle, 128mm

Westminster



16 - Knob, 30mm

Archer



23 - Bow Handle, 128mm
Shiny Chrome

Roundel



24 - 'D' Handle, 128mm
Satin Chrome

Tapered



26 - Bow Handle, 128mm
Satin Chrome

Flat Curve



92 - Rod Handle, 196mm
91 - Rod Handle, 146mm
90 - Rod Handle, 96mm



94 - Rod Handle, 296mm
93 - Rod Handle, 246mm

Hampshire



99 - Letter Box Handle, 128mm
Satin Chrome

Crofton



187 - Trim Handle, 200mm
186 - Trim Handle, 60mm
Satin Chrome

Camden



136 - Shell Handle, 96mm
172 - Rectangle Knob, 59mm
230 - Oval Knob, 40mm



137 - 'D' Handle, 320mm
138 - 'D' Handle, 160mm

Soho



152 - Strap Handle, 320mm
153 - Strap Handle, 160mm

Brixton



212 - Pull Handle, 160mm

Beehive



161 - Knob, 35mm

Fender



203 - Textured Grip, 160mm
202 - Solid Knob, 30mm

Lany



192 - Knurled Pewter, 160mm
191 - Knurled Black, 160mm
190 - Knurled Copper, 160mm

Chrome

Crackle



220 - White Handle, 128mm
221 - White Knob, 35mm
222 - White 'T' Knob, 35mm

Brent



253 - Bow Handle, 320mm
250 - Bow Handle, 160mm

Bexley



263 - Pull Handle, 320mm
260 - Pull Handle, 160mm

Lisse



307 - Strap Handle, 320mm
306 - Strap Handle, 160mm

Ines



324 - 'D' Handle, 320mm
323 - 'D' Handle, 160mm
322 - Square Knob 50mm

Renne



335 - 'D' Handle, 320mm
334 - 'D' Handle, 160mm

Anais



345 - 'D' Handle, 320mm
344 - 'D' Handle, 160mm

Block Bar



367 - Bar Handle, 320mm
366 - Bar Handle, 160mm

Linea



354 - Solid Knob, 30mm
353 - Solid Post Knob, 30mm



355a - Solid Handle, 264mm
355 - Solid Handle, 160mm

Champagne Gold

Ines



327 - 'D' Handle, 320mm
326 - 'D' Handle, 160mm
325 - Square Knob 50mm

Renne



337 - 'D' Handle, 320mm
336 - 'D' Handle, 160mm

Anais



347 - 'D' Handle, 320mm
346 - 'D' Handle, 160mm

Lisse



367 - Strap Handle, 320mm
366 - Strap Handle, 160mm

Brushed Nickel

Oval 'D'



32 - Tube Handle, 512mm
31 - Tube Handle, 320mm
1 - Tube Handle, 160mm

'T' Bar



29 - Bar Handle, 320mm
3 - Bar Handle, 156mm

Parallel



28 - Bowed Handle, 320mm
27 - Bowed Handle, 192mm

Angled Boss



34 - Bar Handle, 392mm
33 - Bar Handle, 195mm

Shaker 'D'



4 - 'D' Handle, 96mm
Satin Nickel
9 - 'D' Handle, 96mm
Antique Nickel

Taper



38 - Strap Handle, 96mm
Satin Nickel

Keyhole



65 - Bar Handle, 456mm
64 - Bar Handle, 356mm



62 - Bar Handle, 256mm
61 - Bar Handle, 156mm

Aries

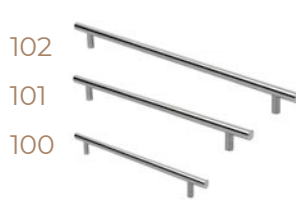


81 - Bar Handle, 214mm
80 - Bar Handle, 160mm

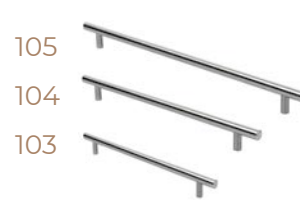


85 - Bar Handle, 502mm
82 - Bar Handle, 310mm

Hollow 'T'



102 - Bar Handle, 160mm
101 - Bar Handle, 128mm
100 - Bar Handle, 96mm



105 - Bar Handle, 357mm
104 - Bar Handle, 256mm
103 - Bar Handle, 177mm

Camden



133 - Shell Handle, 96mm
171 - Rectangle Knob, 59mm
231 - Oval Knob, 40mm



134 - 'D' Handle, 320mm
135 - 'D' Handle, 160mm

Knob



51 - Knob Handle, 32mm
Satin Nickel

Windsor



123 - Shell Handle, 96mm
120 - Knob & Plate, 30mm



122 - Shell Handle, 64mm
121 - Knob, 40mm



125 - Latch Handle, 96mm
124 - Latch Handle, 160mm



126 - Latch Handle, 128mm

Brushed Nickel

Soho



150 - Strap Handle, 320mm
151 - Strap Handle, 160mm

Beehive



160 - Knob, 35mm

Crofton



185 - Trim Handle, 200mm
184 - Trim Handle, 60mm

Brixton



211 - Pull Handle, 160mm

Brent



254 - Bow Handle, 320mm
251 - Bow Handle, 160mm

Bexley



264 - Pull Handle, 320mm
261 - Pull Handle, 160mm

Lisse



304 - Strap Handle, 320mm
303 - Strap Handle, 160mm

Ines



321 - 'D' Handle, 320mm
320 - 'D' Handle, 160mm
319 - Square Knob 50mm

Renne



333 - 'D' Handle, 320mm
332 - 'D' Handle, 160mm

Anais



343 - 'D' Handle, 320mm
342 - 'D' Handle, 160mm

Block Bar



365 - Bar Handle, 320mm
364 - Bar Handle, 160mm

Satin Brass

Fender



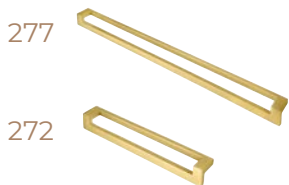
205 - Textured Grip, 160mm
204 - Solid Knob, 30mm

Brixton



214 - Pull Handle, 160mm

Deco



277 - Deco Handle, 320mm
272 - Deco Handle, 160mm

Block Bar



371 - Bar Handle, 320mm
370 - Bar Handle, 160mm

Linea



356 - Solid Post Knob, 30mm
357 - Solid Knob, 30mm



358a - Solid Handle, 264mm
358 - Solid Handle, 160mm

Pewter

Hammered



39 - 'D' Handle, 128mm
49 - Knob, 32mm

Titan



48 - Latch Handle & Plate, 64mm
47 - 'D' Handle & Plate, 64mm

Brixton



213 - Pull Handle, 160mm

Bexley



265 - Pull Handle, 320mm
262 - Pull Handle, 160mm

Windsor



132 - Shell Handle, 96mm
131 - Shell Handle, 64mm
130 - Knob, 40mm

Soho



154 - Strap Handle, 320mm
155 - Strap Handle, 160mm

Block Bar



369 - Bar Handle, 320mm
368 - Bar Handle, 160mm

Lambeth



243 - 'D' Handle, 320mm
241 - 'D' Handle, 160mm

Brent



255 - Bow Handle, 320mm
252 - Bow Handle, 160mm

Deco



276 - Deco Handle, 320mm
271 - Deco Handle, 160mm

Camden



139 - Shell Handle, 96mm
173 - Rectangle Knob, 59mm
232 - Oval Knob, 40mm



140 - 'D' Handle, 320mm
141 - 'D' Handle, 160mm

Copper

Camden



168 - Shell Handle, 96mm
170 - Rectangle Knob, 59mm
233 - Oval Knob, 40mm



167 - 'D' Handle, 320mm
166 - 'D' Handle, 160mm

Crofton



181 - Trim Handle, 200mm
180 - Trim Handle, 60mm

Block Bar



361 - Bar Handle, 320mm
360 - Bar Handle, 160mm

Windsor



165 - Knob, 40mm

Lany



190 - Knurled Copper, 160mm

Brixton



210 - Pull Handle, 160mm

Harmony Kitchen Accessories



150mm - 2 Shelf Pull Out



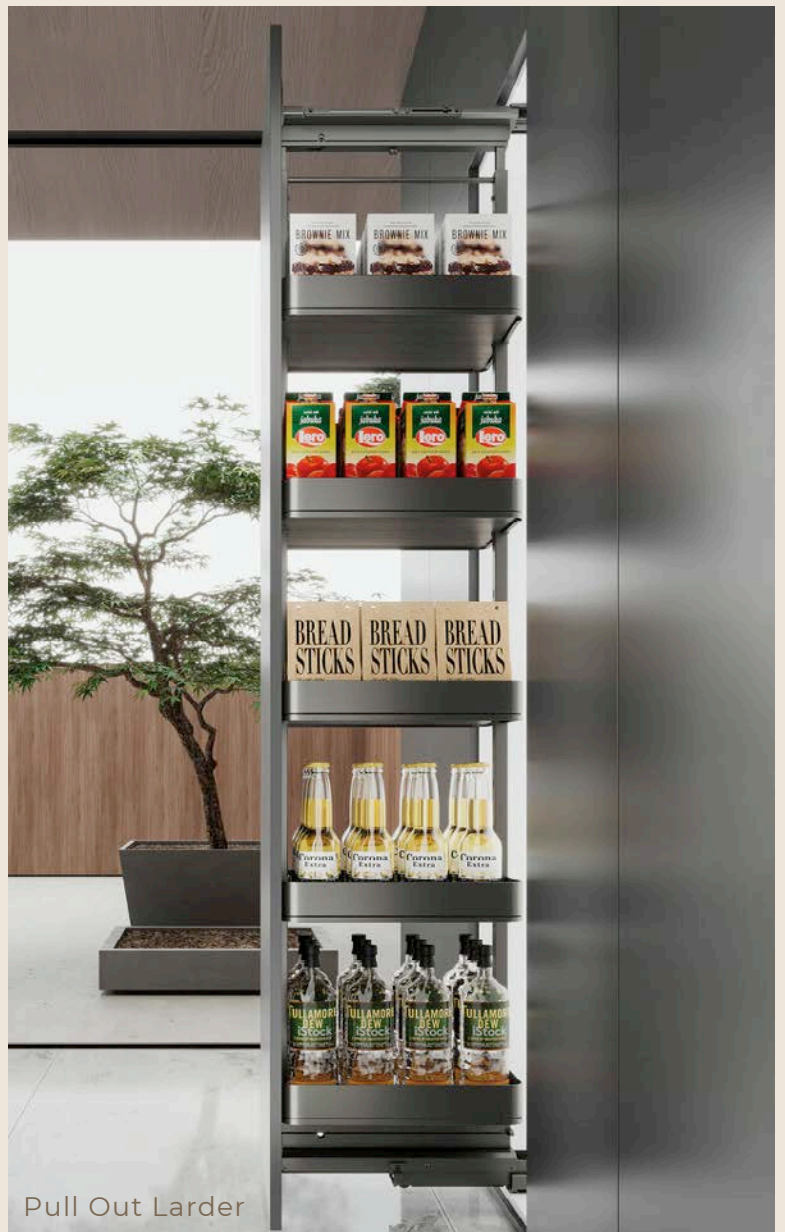
Corner Pull Out Module (Left Handed)



Blind Corner Pull Out



300mm - 2 Shelf Pull Out



Pull Out Larder





Multi-Basket Pull Out



Corner Pull Out Module (Right Handed)



150mm - 3 Shelf Pull Out



400mm - 3 Shelf Pull Out



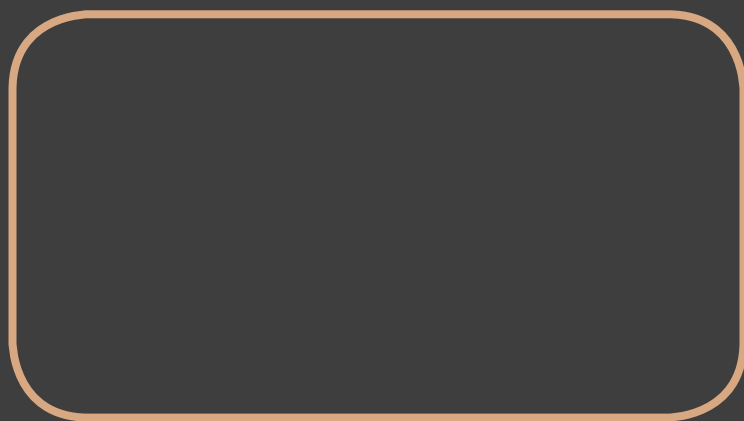
Hinged Larder Unit

Thinking about a NEW Bedroom?



B E D R O O M S by **STUDIO VIVRE**

studio**vivre**.com



KITCHENS

studio vivre is brand name of Trade Mouldings Ltd.