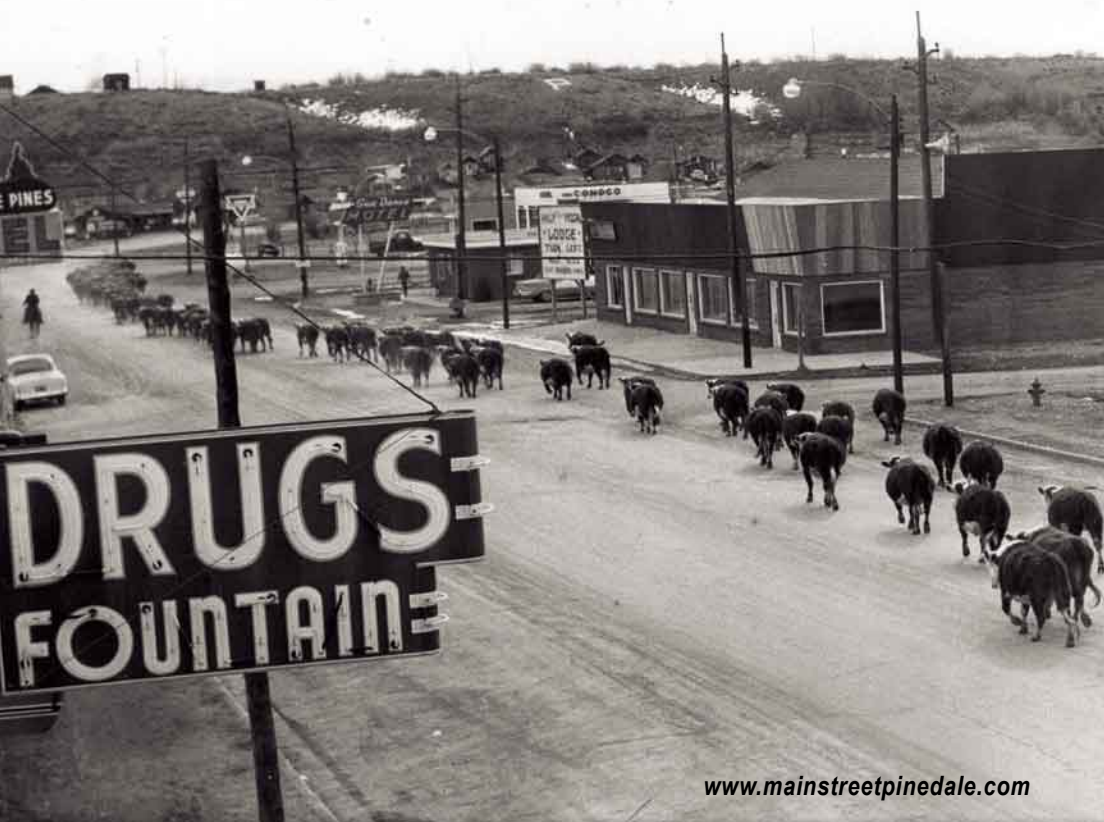


# PINEDALE WALKING TOUR

BY ANN CHAMBERS NOBLE



[www.mainstreetpinedale.com](http://www.mainstreetpinedale.com)

MAIN  STREET  
PINEDALE

*presented by*

MAIN STREET PINEDALE & SUBLETTE COUNTY HISTORIC PRESERVATION BOARD

## ★ THE FOUNDING AND INCORPORATION OF PINEDALE ★

Mr. John F. Patterson proposed establishing a town in the Green River Valley along Pine Creek in western Wyoming. He offered to build and stock a general store if local ranchers Charles A. Petersen and Mr. Robert O. Graham each donated five acres for the town site. The three gentlemen agreed to this plan, a surveyor was hired, and the town of Pinedale, named after the post office on Peterson's ranch, became a town on paper owned by these three men. The ranchers' property line would become Pine Street. Founders Day is September 26, 1904, when the first town plat was drawn on a piece of yellow cloth showing blocks, lots, and streets. Free town lots were offered to early settlers, one of whom was C. Watt Brandon, Mr. Patterson's nephew. Mr. Brandon built a newspaper office for his paper, The Pinedale Roundup, which also housed the new post office. Over 100 years later, the newspaper is still in print.

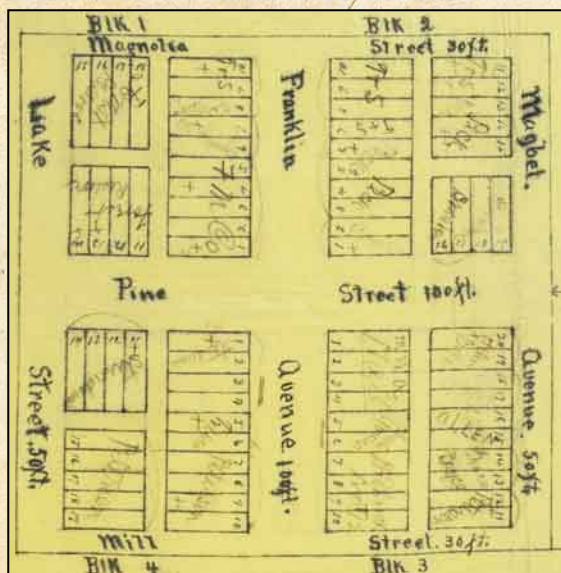
In 1912, Pinedale was incorporated, gaining the popular claim-to-fame as being the farthest incorporated town from a railroad in the United States. It is nearly 110 miles to Rock Springs, Wyoming, the closest railroad.

★ Streets running North and South are Avenues

★ Streets running East and West are Streets

### PINE STREET

Pine Street is now the town's main street, though originally it was the central cross street in town. Named for the beautiful pine trees along the shores of Pine Creek, this street was originally the fence line between two ranches, belonging to Robert O. Graham and Charles A. Petersen, who donated five acres each to start the town.



◀ Original town plat  
Dated September 26, 1904.

Sublette County Historical Society Photo





## 1. CHAMBER OF COMMERCE / VISITOR'S CENTER 19 East Pine Street

---

In the 1920s Walter Scott built the Pinedale Cash Store here. In the 1950s, it was Rosendahl's General Store. Shoppers could find nearly anything in here, from groceries, clothes and shoes, to fabrics and dishes. Dick Miller later had the building, named the Sports Center, a large store focusing mainly on sporting goods. It burned in January 1978 and the lot remained empty until the Sublette County Visitor's Center was built in 2007.

The outside west wall of Sunny Korfanta's Drug Store was badly marred with soot following the 1978 fire in the building next door. Shortly after the fire, artists Pip and Duane Brant moved to the Pinedale area. Pip asked Sunny if she could cover the scarred wall with a mural. With his approval, Pip painted cows walking along. The subject was inspired by the unique local practice of cattle being driven through town to change grazing pastures. The mural, painted in 1980, has become a Pinedale landmark. When the Sublette County Visitor Center and Chamber of Commerce building was constructed in 2007, community pressure insisted the new building not cover the mural. It was set back on the lot for this reason. >>**CROSS PINE STREET**

## 2. SUBLETTE COUNTY BUILDING 21 South Tyler

---

On June 1, 1931, Big Piney and Pinedale members of the Masonic Grand Lodge of Wyoming laid the cornerstone of the new Sublette County building. A metal container was placed in the cornerstone, holding items reflecting the area at the time, including maps of the state and county, a current issue of the Pinedale Roundup, and lists of local clubs, with their officers and members. The container is still there.



The Sublette County Building shortly after completion in 1931. The building faces Tyler Avenue. *Sublette County Historical Society Photo.*

The property was platted in 1923. By May 1930, the County Commissioners were prepared to develop plans for a county building. The citizens of Sublette County voted in favor of the bond issue to fund the building at the General Election November 4, 1930.

The modified colonial design, two-story building housed the county courtroom, judge's chamber, jury room, and county attorney and clerk of court offices. The sheriff, treasurer, and assessor's offices were also here, along with the jail. County government continues to be conducted in this building.



### 3. 23 WEST PINE STREET

---

This was Faler's Grocery Store in the 1950s and before that it was the Pinedale Roundup offices. After serving in World War II, Harold Faler returned to Wyoming and opened his grocery business in Boulder. A few years later he moved it to Pinedale, in this building. The back section was originally his butcher shop. Demands on his store made him leave this modest building for a bigger place he built on Pine Street between Sublette Avenue and Bridger Avenue. (It is now the Summit Building, home to small businesses and offices.) Faler would move again across Bridger Avenue to yet a bigger building in what is now Ridley's Family Market.

### 4. PATIO GRILL & PINE COFFEE SUPPLY 35 West Pine Street

---



The Phillips 66 Station in 1956, with Louie Caller and Phil Hawks, attendants. *Sublette County Historical Society Photo.*

The Phillips 66 Station and the Patio Grill Coffee Shop and Dining Room opened in 1956, and were built by Vernon Delgado. His mother, Babe Delgado, ran the restaurant for a while, but Charlie and Maggie Pape then bought it in 1959. Brother Billy Pape and his wife Annette took over the business and ran it for decades. The restaurant became famous amongst locals and business travelers for Billy's chili and his Greek breakfast, and for Annette's homemade pies.

Pine Coffee Supply is now housed in the original Phillips 66 Station.

### 5. CORRAL BAR 30 West Pine Street

---

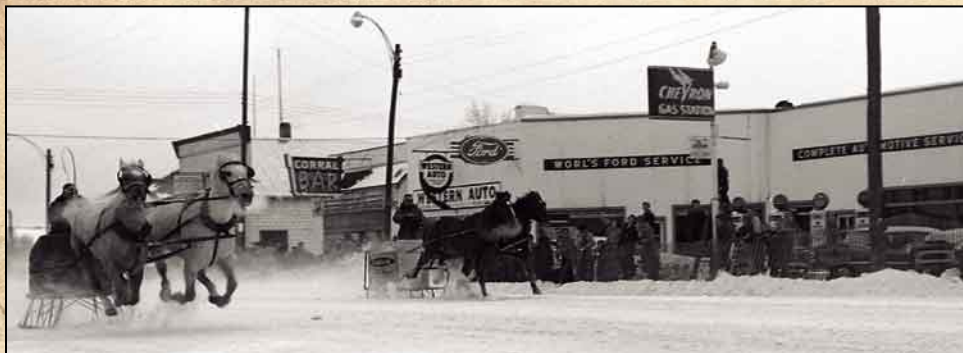
The Corral Bar has been one of the longest continuous businesses in Pinedale. Started by J. F. McCormick and Lester Faler in the 1930s, it was then known as the MF Corral, after the owners. It was rebuilt at least once, after a fire destroyed it in November 1936. The MF Corral found a new location in the early 1940s, but was still operated by Mr. McCormick and Mr. Faler. Brothers Frank Romish and Otto Garbardi took over the bar in the 1950s and ran it for decades. It continues to operate in this location and is often referred to as the World Famous Corral Bar.



A cattle drive in about 1960. *Paul Allen Collection.*



## 6. CHINA GOURMET 44 West Pine Street



A pair of two-horse cutters charges along Pine Street (near present day China Gourmet) in 1956. *Paul Allen Collection.*

Perhaps one of the most diversely used buildings in Pinedale is the one on the southeast corner of Pine Street and Maybell Avenue. In the 1930s it was Hockett Motor Company Garage. In November 1936, it was destroyed by fire, along with thirteen cars stored inside. At one point, it contained a bowling alley, with pins that were set by hand. In 1951 Carl M. and Ethelyne Worl purchased the building and Ford dealership and operated it under the name Worl's Ford Service. Mr. Worl died in 1969, and his wife became the Ford dealer and ran the garage until 1974. Ethelyne was also the town's librarian and for a time, the library was kept here. The business was sold to Mr. Goodman who kept it for a few years before selling it to Mr. Walton, who operated it as Walton's Ford, but he suddenly left town, leaving the business. The building was empty for some time in the 1980s until Kathy Lee opened a gift shop and later a restaurant. It remained a restaurant, but changed hands and style, when it became China Gourmet in 2006. This was Pinedale's first Asian restaurant.

## 7. STOCKMANS 117 West Pine Street



The Pines Hotel, often called the Fardy Hotel. *Courtesy of Irene Steel.*

A. G. "Gus" Fardy and Ida moved to Pinedale and built and operated the Pines Hotel in 1913 on the northwest corner of Maybell Avenue and Pine Street. This was the first building to face Pine Street, and its prominence led to other businesses wanting to be near it. This resulted in Pine Street becoming important commercially. The hotel was often called the Fardy Hotel. When Mr. Fardy was killed in

an automobile accident in 1931, Mrs. Fardy continued to operate their business, which by 1930 included the hotel, a restaurant, and bar. She also owned most of the outskirts along the hill from Fremont Lake which were called "Fardyville," after Mrs. Fardy. The building would remain a hotel with a bar and restaurant for decades. By the 1950s, it was the Stockman's building that housed the Club Bar, owned by John Howard before Gene Pfisterer took ownership.



## 8. COWBOY BAR 104 West Pine Street

The Cowboy Bar was originally built by Walt Punteney in 1931 and called the Rendezvous Pool Hall. It was then Prohibition, so he did not serve alcohol (legally). In his youth, Walt had run with Butch Cassidy's Wild Bunch.

During the early years of the bar, square panels of metal siding were placed on the building's exterior in an effort to make the building look like a stone building, and set it apart from the other log structures in town. Local brands were then painted on the square panels, but a later renovation placed wood half-logs over the brands. The brands would remain covered, and largely forgotten, until 2011 when the owner was replaāng the siding. While removing the old half-logs, the metal squares with the brands were again exposed then removed. They are now on display at the Green River Valley Museum in Big Piney.



Local brands once adorned the Cowboy Bar. *Courtesy of Carmen Hittle.*

## 9. THE COWBOY SHOP 137 West Pine Street (corner of Franklin)



The Pinedale Roundup and post office building on Tibbals Corner circa 1910. *Paul Allen Collection.*



◀ The Pinedale Historic District 1904 – 2004 sign (left) was given to the town by the Sublette County Historic Preservation Board in celebration of the town's 100<sup>th</sup> birthday of its founding. Located in the middle of the original town plat, it now stands outside the Cowboy Shop, opened in 1947 by E. J. and Caryn Bing and is still owned and operated by the Bing family. The first building on this corner, constructed in 1904, was called the Tibbals Building, and was the first Pinedale Roundup and post office building on what was then called Tibbals Corner. By 1913 it was converted to a pool hall. The building was lost to fire in July 1935.



## 10. HAIR EMPORIUM 136 West Pine Street (corner of Franklin)

---

Mr. Charles Petersen donated town lots to build the Woodman Hall on the southeast corner of Franklin Avenue and Pine Street. Woodman Hall was an important gathering place for Pinedale's pioneers. It was the town's original Old Masonic Lodge and would also be used for several community meetings and a summer school. The first gathering occurred shortly after completion when, on December 26, 1904, it was the site of the town's first Christmas party, with almost no heat.

Mr. D.C. Carson purchased the property in 1931 and tore it down. By June 1932 had replaced it with a new four-room structure for his drug store, post office, parcel post room, and soda fountain, using some of the original logs from Woodman Hall. The Hair Emporium and Company is currently in the building Mr. Carson constructed. >> **HEAD SOUTH ON FRANKLIN**

## 11. STATE FARM INSURANCE 41 South Franklin Avenue

---

The original schoolhouse was located here and opened November 7, 1904, with 32 students enrolled. There wasn't money enough for books, or to pay the teacher for a full year. Despite efforts to raise more money, including a local subscription and a fundraising dance at Woodman Hall on Thanksgiving night, the school year was only able to last four months. In 1912, the pupil numbers outgrew the building and a new school was built. The original school house was moved to Magnolia Street and is now part of The Chambers House Bed and Breakfast (see #25).



Pinedale's first Town Hall was built in 1913. Courtesy of David Allen.

The Pinedale Town Meeting Minutes of July 2, 1912 reported; "The Committee appointed to look up location for the Town Hall and Jail made their report stating that Archie Jones had four lots for sale on old School House site for \$450.00. Moved and seconded that the Town of Pinedale buy four lots from Archie Z. Jones. The Clerk was instructed to notify Jones that the board had considered his price, and that he was requested to execute deed for same."

Pinedale's first Town Hall, with a jail cell inside, was then constructed on this corner in the fall of 1913. In January 1915, the Town Council voted to pay Allen & Allen \$34 to construct an outhouse for the building. Town Hall moved from this property in 1939 to 38 South Maybell Avenue where it was located with the town fire department until moving to the former Forest Service Office on Franklin in 1979.

This location would be picked by the U.S. Forest Service where they built the Pinedale Ranger Station. The building was constructed by the CCCs (Civilian Conservation Corps) in 1933. It had the trademark pine tree cutouts on the shutters. It remained the Forest Service Office until 1974 when it moved up the street to the southwest corner of Pine Street and Franklin Avenue.



**12. TESA MANNING, CPA** 44 South Franklin Avenue

This was originally the location of the town’s first blacksmith shop. George E. Truax advertised that he worked on plows, wagons, machines, and “horseshoeing,” in this location. General blacksmiths were important and common in early Pinedale.

**13. EMPTY LOT** 210 West Pine Street

The Fremont Café was here in the 1940s. The café served the hot lunch program to high school students often with food donated from local ranchers and hunters.

The U.S. Forest Service moved their offices to this corner in 1974. When they outgrew this building in 1995, they moved to their current location on the east end of town. The Town Government occupied the building until it was town down in 2019.

TOWN HALL LOCATIONS:	FOREST SERVICE LOCATIONS:
38 South Maybell .....1939-1974	243 West Pine ..... 1904-1933
41 South Franklin ..... 1974-1995	41 South Franklin ..... 1933-1974
210 West Pine ..... 1995-2019	210 West Pine ..... 1979-1995
69 Pinedale South ..... 2019-Present	29 Fremont Lake Rd ..... 1995-Present

**14. FRANKLIN MERCANTILE BUILDING** 201 West Pine Street



The Jones, Son and Company store replaced the Franklin Mercantile. Sublette County Historical Society photo.

John F. Patterson built the Franklin Mercantile Company, and stocked with general merchandise to the value of \$5,000 as his contribution to the founding of Pinedale. It was probably the first building in the new town. Named for his oldest son, the building remained a general store for the community for decades. As one of the earliest buildings in town, a storeroom was also used as a meeting place including the first Congregationalists Sunday School meetings starting in July 1904.



## 15. TWO RIVERS FISHING COMPANY 232 West Pine Street

---

Paul Hagenstein, Sr., built the Pinedale Garage in 1935 and ran the business until 1944. The business was responding to the increasing need to service automobiles that were owned by locals as well as those brought to town by tourists. Andy Harrower took over Hagenstein's building starting in the 1950s with Harrower Tractor Company. The building remained largely vacant starting in the 1980s until it reopened in 2018.

## 16. FOREST SERVICE HOUSING 243 West Pine Street

---



In November of 1905, Pinedale's first white baby was born in this house to Mr. and Mrs. Zeph Jones. *SCHS photo.*

This was the first U.S. Forest Service Headquarters in Pinedale. Forest Service Supervisor Zeph Jones had been stationed at Kendall in 1902 to oversee the Wind River Division of the Yellowstone Forest Reserve. Mr. Jones wrote the Forester for the Forest Service in Washington, D.C. from Kendall on April 21, 1905, explaining why he had moved his headquarters to the new town of Pinedale on September 1, 1904. "The moving of my headquarters to Pinedale will give the business the advantage of a daily mail, Notary Public, some assoâation for my family, and a school for my children. To give you some idea of the isolation that we are subjected to at this place (Kendall), I will say that my wife has not had the opportunity to see or speak to another woman since the roads closed up last fall, nearly five months ago."

The town donated these two lots for a Forest Service building and home. In November, 1905, Pinedale's first white baby was born in this house to Mr. and Mrs. Jones. The building was later demolished and the Forest Service Headquarters were moved to 41 South Franklin.

## 17. CELL ONLY VERIZON 313 West Pine Street

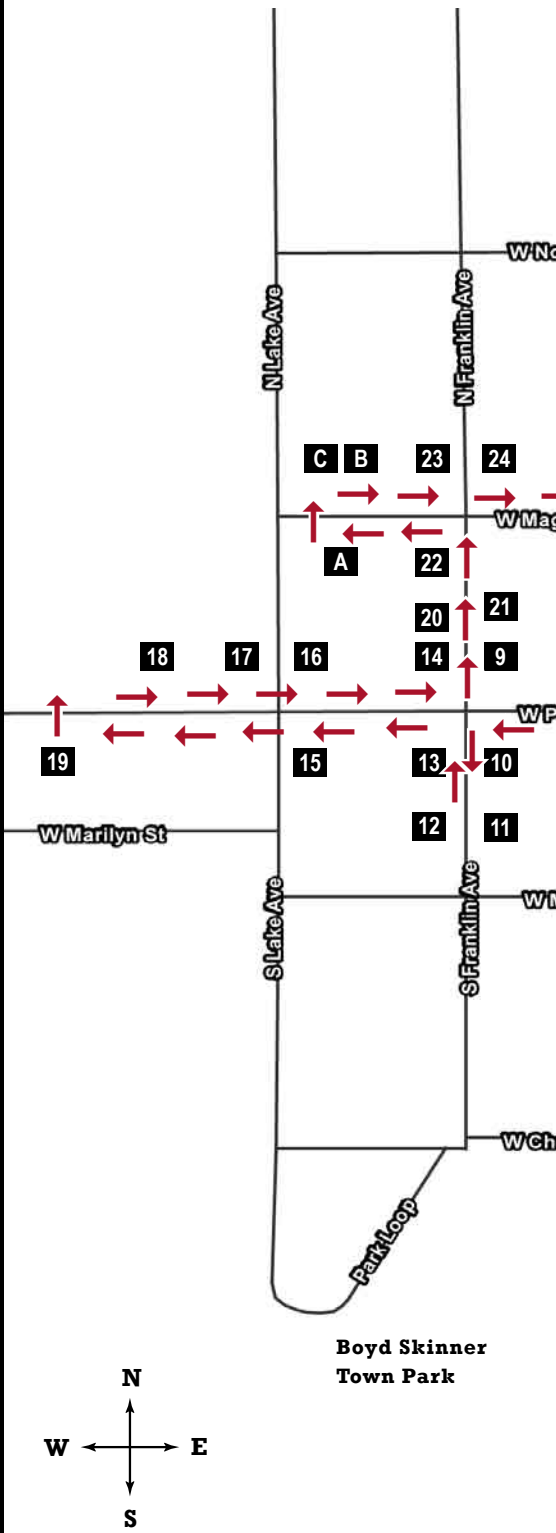
---

Larry Looney was a real estate agent and developer who built the laundrymat in 1968, and sold it to Ray Risser. One night Courtney Davis won the laundrymat in a card game, but gave it back a few hours later. In 1972, Bob Penton purchased the business and ran it for nearly three decades.

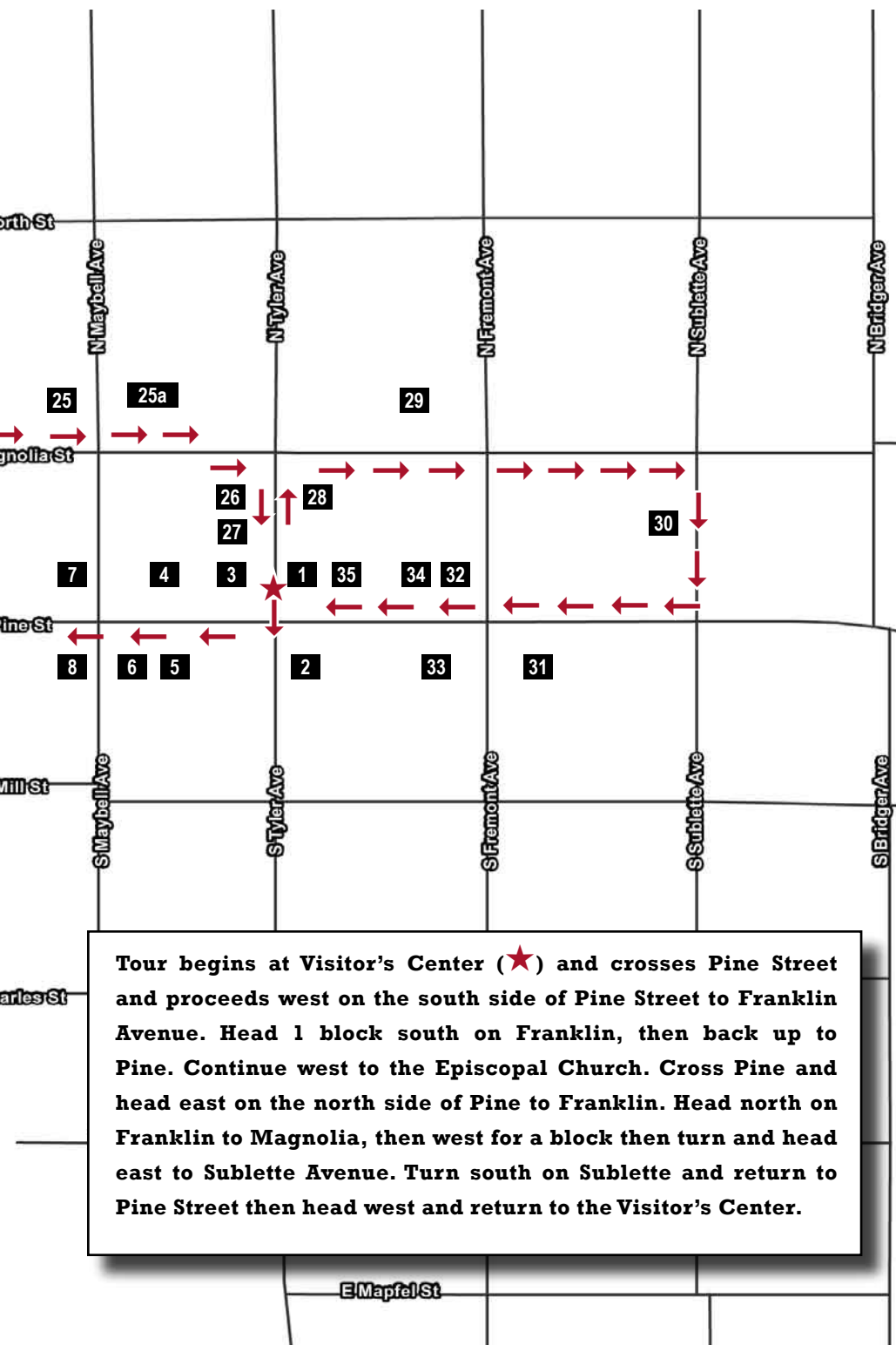


DOWNTOWN PINEDALE

- 1. CHAMBER OF COMMERCE / VISITOR'S CENTER
- 2. SUBLETTE COUNTY BUILDING
- 3. 23 WEST PINE
- 4. THE PATIO GRILL & PINE COFFEE SUPPLY
- 5. THE CORRAL BAR
- 6. CHINA GOURMET
- 7. STOCKMAN'S RESTAURANT & LOUNGE
- 8. THE COWBOY BAR
- 9. THE COWBOY SHOP
- 10. THE HAIR EMPORIUM
- 11. STATE FARM INSURANCE
- 12. TESA MANNING, CPA
- 13. 210 WEST PINE STREET
- 14. FRANKLIN MERCANTILE BUILDING
- 15. TWO RIVERS FISHING COMPANY
- 16. FOREST SERVICE HOUSING
- 17. CELL ONLY VERIZON
- 18. PINEDALE POST OFFICE
- 19. ST. ANDREW'S IN THE PINES EPISCOPAL CHURCH
- 20. SKYLINE THEATER
- 21. DEER CREEK CREATIONS
- 22. FREMONT SALOON BUILDING
- 23. PRIVATE RESIDENCES (A,B,C)
- 24. MAMIE TARTER'S HOME
- 25. CHAMBERS HOUSE BED & BREAKFAST
- 25a. WATER WISE GARDEN
- 26. CLEMENTSEN HOME
- 27. ALLEN AGENCY REAL ESTATE
- 28. MASONIC LODGE
- 29. LOG CABIN MOTEL & PRIVATE HOMES
- 30. GANNETT PEAK LODGE
- 31. VACANT LOT/WILSON HALL
- 32. WELLS FARGO BANK
- 33. COURTHOUSE LAWN
- 34. SUBLETTE CO. ATTORNEYS OFFICE
- 35. HERITAGE QUILTS & FABRIC SHOP









## 18. PINEDALE POST OFFICE 413 West Pine Street



The BLM office (far left) and the U.S. Post Office (far right) occupied the Molyneux Building. *SC Historical Society photo.*

The Molyneux Building was constructed in the 1970s. On the west end, the original occupants were the Bureau of Land Management. The east side of the structure has always been the Pinedale Post Office. Local artist David Klarén received permission from the building owner and the postal authorities to paint the mural on the ånderblocks on the east wall on his summer break from college in 1986. Klarén's idea to paint a mirror of the Wind River Mountain Range was inspired by misty mornings at Trapper's Point. When this mural wore out, he replaced it in 2014 with the current silhouette of a barbed-wire fence at sunset. In the summer of 2011, Palmer and Kirsten Klarén, nephew and niece of David's, were the young artists in town who designed and painted the mural on the west side of the building.

## 19. ST. ANDREW'S IN THE PINES EPISCOPAL CHURCH 524 West Pine Street

The cornerstone for the church was laid May 4, 1938, on the south side of Pine Street along the banks of Pine Creek. A short history of the area's Episcopal Church, with other documents, were placed in the cornerstone. The logs in the original church came from Hoback Basin. In 1953, when church activities needed more room, the building was raised and rebuilt on a basement, adding space for church work and soåalization. Referred to as the "undercroft," the bottom level has been a gathering place for Church School classes, potluck dinners, and other celebrations ever since. By the 1980s, the Episcopal Church had outgrown its small, log structure, which had become a Pine Street landmark. On January 7, 1989, the congregation dedicated a new log church that resembled the older church in style but was able to seat many more people.

**>> CROSS PINE AND HEAD EAST TO FRANKLIN**



## 20. SKYLINE THEATER 14 North Franklin Street

---

Town Founder John F. Patterson constructed his home north of the Franklin Mercantile. In addition to founding the town, Mr. and Mrs. Patterson and their son remained in Pinedale for nearly two decades, contributing to its formation. Mr. Patterson assisted with the creation of new buildings and businesses and Mrs. J.F. Patterson was instrumental in obtaining quality teachers for the new town.

The home was replaced with the Skyline Theatre, which had its grand opening in September 1940. The Pinedale Roundup reported on the theater opening, "The beautiful interior is indirectly lighted from each side of the upper portion of each wall. Silhouettes depicting mountain scenery, winter sports, hunting and fishing, and other recreational facilities adjacent to Pinedale, lend local color to the interior decorations. A raised floor and comfortable furniture makes theatre going a pleasure. Acoustics are excellent, as the building was designed for sound equipment." The new movie house was a great improvement from the wooden benches and folding chairs at the Wilson Hall, on east Pine Street, where movies had been shown throughout the 1930s. After two decades of being a favorite gathering place for the town's people, the theatre closed. It was replaced with Walt's Plumbing and Heating.

## 21. DEER CREEK CREATIONS 21 North Franklin Street

---



The Trails Hotel as it appeared in the 1930s. Sublette County Historical Society photo.

### >> HEAD NORTH ON FRANKLIN

The first hotel in town was the Pinedale Hotel, built in 1904 and sometimes called the Sprague Hotel after its builder. It was also known as the Peck, Bloom, Baehner and Trails Hotel. It ceased to be a hotel after 1950. It has housed numerous businesses from restaurants and bars, to flower and gift shops. It is the only original building remaining in the historic district.



## 22. FREMONT SALOON BUILDING 46 North Franklin Street



Jeff Kaul, with his father, Floyd in front of Kaul's Billiards looking towards Pine Street. Photo courtesy of Swede McAllister.

Mamie Tarter and Rudolph Swartz were among the first individuals who purchased lots in the original Pinedale town site. Mrs. Tarter built the Fremont Saloon on this property, on the southwest corner of Magnolia Street and Franklin Avenue. It was often referred to as the Tarter and Swartz Fremont Saloon when Tarter went into business with Swartz. Like many saloons around the West at this time, it was sometimes referred to as the "Bucket of Blood." This was the site for Pinedale's first murder. Dick Grant, the saloon's proprietor, was found brutally murdered July 13, 1915. The crime has gone down in history as Pinedale's infamous "Ice Pick Murder" because the victim was viciously stabbed in his forehead, eyes, and nose with an ice pick. The suspect in the murder, Charles Bellin, was later acquitted.

Allie Bayer purchased the building as a pool hall and continued to operate it as such until he sold it to Floyd Kaul, who owned and operated Kaul's Billiards. Floyd operated the pool hall for years with his son, Jeff, after he returned from the service during World War II. Jeff had been at Pearl Harbor on the fateful morning of December 7, 1941. By the 1960s, the pool hall was sold to the American Legion Post 47 and Auxiliary. Men met in the building on the left, while the women gathered in the building on the right (where the kitchen was located!)

### >> HEAD WEST ON MAGNOLIA

## 23. PRIVATE RESIDENCES 207 West Magnolia Street

**NORTH SIDE:** The green log home, 207 West Magnolia Street, on the northwest corner of Franklin Avenue and Magnolia Street, was built by D.C. "Kit" Carson, a relation of the famous mountain man and guide. The structure, in its early years, also served as the Pinedale Post Office at times. Mr. Carson was the Postmaster for decades.



**23A.** 220 WEST MAGNOLIA STREET for years was the Club House for the Camp Fire Girls. The group was formed in 1935 and active for decades under the direction of Madge Funk. Most town and ranch girls were members from 1935 until Madge's death in the 1990s.

**23B.** 225 WEST MAGNOLIA STREET was the Floyd Kaul residence. Mr. Kaul purchased this home at the same time he bought the pool hall from Allie Bayer on the southwest corner of Franklin Avenue and Magnolia Street.

**23C.** 231 WEST MAGNOLIA STREET was Sadie Hall's home. Like many women in the community, Sadie served the community in many volunteer positions. She is particularly remembered as an Auxiliary member to the Phillips-Edwards Post 47 for starting in 1936 Poppy Day sales to raise money to honor World War I dead and to raise funds to help disabled veterans.

**>> HEAD EAST ON MAGNOLIA**

#### **24. MRS. FRANCES TARTER HOME** 145 West Magnolia Street (Private Residence)

---

Mrs. Frances (Mamie) Tarter built her home in 1904, when this was not in the town limits. Mamie had a ranch south of Big Piney, but spent most of her time opening and operating businesses. She owned the Elk Hotel and the Emerson House in Kemmerer, Tarter and Swartz Roadhouse and Saloon in Daniel, and a bar in Kendell before opening the first saloon in Pinedale, located diagonally across the street. She also worked as a doctor, nurse, midwife, coroner, and mortician.

C. Walt Brandon wrote in an early Pinedale history that Mrs. Tarter was a "big and handsome and loud-spoken woman who started a gambling house, and could smoke a big cigar with the best of her patrons, and who could also outplay them in solo. She took in a lot of the hard-earned money that was in circulation in the new country, but was generous in paying it out where it was needed." She had several husbands, and therefore names, throughout the years.

This house was the Skinner's residence starting in 1939. The youngest of the six well-known Skinner brothers, Ole, was born in this house on April 4, 1941. The founders of the famous Skinners Brothers Wilderness School lived here when there was no running water or indoor plumbing. The yard had an antler arch, which was taken down years later, but remembered by many of the old-timers.

The Shannon Home was directly across from the Feltner home (see #25), and was the residence to six children. (The home was later removed to Cora, where it still stands.) The Feltners, Skinners, and Carsons (across Franklin and on Magnolia) also all had six children. So, in four houses on this street, there were twenty-four children! The ultimate show of patriotism came from these blocks. All of these families, plus the Korfantas to the east and the Kauls to the west, had young men serve in uniform during World War II.



## **25. CHAMBERS HOUSE BED & BREAKFAST** 111 West Magnolia Street

---

One of the first buildings constructed in the new town in 1904 was a schoolhouse (see #11). By 1912, the growing community had outgrown the schoolhouse, and it was abandoned for a bigger building in a different location. Mr. L. H. Hennick purchased the first school house and moved it to the northwest corner of Magnolia Street and Maybell Avenue.

This school house is now the kitchen and dining room in The Chambers House Bed and Breakfast. Mr. Hennick gave the building and lots to his daughter, Angeline, and her husband, Mr. C. C. Feltner. In 1933, Mr. Feltner added an extension south of the original school house that makes up most of the home today. Mr. Feltner took advantage of local building materials. From the local forest he pulled the logs which still encase the entire home.

Mr. and Mrs. Feltner's last two children were born in this house. During the Second World War, the Feltner home had a large Victory Garden in the west side yard of the house. Such gardens were considered patriotic. Across Maybell St. on the east side of The Chambers House is the Sage and Snow Garden Club water wise demonstration garden (25a).

## **26. PRIVATE RESIDENCES** 44 North Tyler Street

---

The Clementsen Home: The original part of this home was built by Thomas L. Clementsen in 1912 for himself and his wife, Agnes May Sutton Clementsen. Mr. Clementsen was elected Pinedale's first sheriff in 1912. As Sheriff, he went after an outlaw hiding out at a cabin in Newfork Canyon in 1916. While trying to apprehend him, he was shot in the shoulder, but survived the grueling trip back to town. Upon recovering, he remained the Sheriff for the community.

A few years later, though, he succumbed to the Spanish Influenza, brought to town by returning World War I veterans. Pinedale was quarantined, but as Sheriff, Mr. Clementsen ignored the order and assisted the ill with their chores. He contracted the virus, which took his life. Angles May Sutton Clementsen did not have formal medical training but had plenty of medical experience. She delivered many of the area babies, including some in this home and in the small house behind.

## **27. ALLEN AGENCY REAL ESTATE** 26 North Tyler Street

---

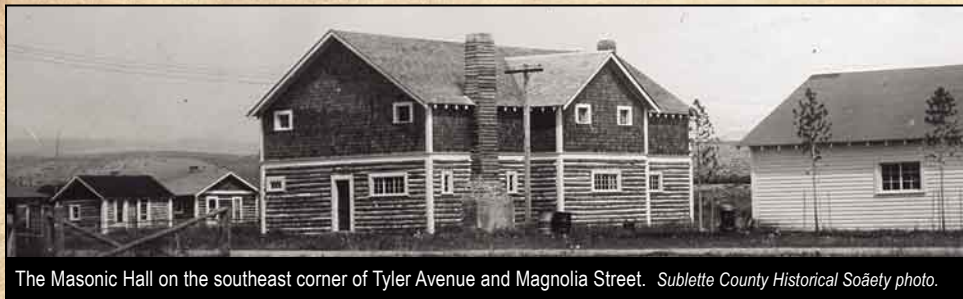
Mr. and Mrs. Glenn Wise purchased the Pinedale Power and Light Company in 1939 and operated the business from this building for decades. This building was originally two cabins put together after they were moved from Daniel in the 1930s. In the 1950s, Glenn's son Marlenn and his wife Jan, joined his parents in the ownership of the Power company. A fire destroyed the entire power plant in 1951, located on Pine Creek, which was rebuilt and expanded.

The Wise family sold the power company to the Lincoln Service Corporation in 1974. The Wise family is particularly remembered for its generosity with free electricity for Christmas lights, illuminating the ice-skating rink, and paying the initial costs to bring television to Pinedale in the 1950s. The building remains in the Wise family.



## **28. MASONIC LODGE** 23 North Tyler Street

---



The Masonic Hall on the southeast corner of Tyler Avenue and Magnolia Street. *Sublette County Historical Society photo.*

The second two-story building in Pinedale, built in 1928, is the Masonic Temple, home to the Franklin Lodge 31 A.F. & A.M. The group had been organized in 1911. The Pinedale Chapter of the Eastern Star was created in 1927, and a year later the Masons offered the use of their new hall for the Eastern Star meeting place. This building was constructed by brothers Dave and John Wilson of Pinedale. It has always been, and continues to be, used as the Masonic Lodge.

## **29. LOG CABIN MOTEL & PRIVATE HOMES** 49 East Magnolia Street

---

The Log Cabin Motel was built in 1929 by Walter Scott, who also owned the Pinedale Cash Store and the Scott Stage Company. He built the motel with the help of craftsmen and people who needed to pay their debts at his store. Mr. Scott built eight cabins in a 'U' shape, with a bathhouse in the center. The home of Mr. Harry E. "Casey" Klein, Pinedale's first Game Warden for the Wyoming Game and Fish Department starting in 1920, is now units 10 and 11 and was built in 1927.

With transportation very difficult in the wintertime, area ranch women would often move to town if their babies were due in the winter. They would stay in these cabins awaiting delivery of their children, where they could be assisted by a doctor or a mid-wife. Early guests cleaned their own rooms. Some, unable to pay their bills, would do minor repairs and painting in return for lodging. In the 1930s, the cabins were remodeled so that each cabin contained two rooms, and indoor plumbing was added.

The motel has had numerous owners, and actually changed hands in a poker game. A train robber (who is now in the Cowboy Hall of Fame) also spent the night here. The Log Cabin Motel is on the National Register of Historic Places.

## **30. GANNETT PEAK LODGE** 46 North Sublette Avenue

---

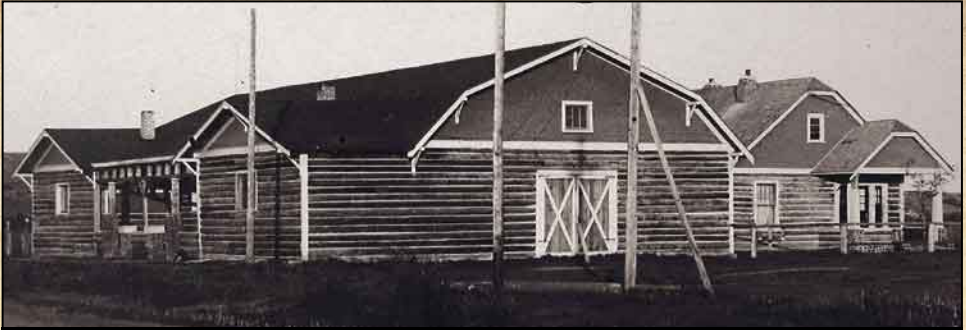
Formerly the Half Moon Motel which was built from abandoned barracks left when the Civilian Conservation Corps Camp in Farson closed in 1941. For a few dollars and the cost to remove the barracks, several people from Pinedale purchased and moved former CCC barracks for private homes and garages, or for businesses, such as this motel. Most of the barracks relocated to Pinedale, however, came from Camp Fremont on the south shores of Fremont Lake.

**>> HEAD SOUTH ON SUBLETTE, HEAD WEST ON PINE**



### 31. VACANT LOT/WILSON HALL 118 East Pine Street

---



Wilson Hall was built in 1923 by John and Dave Wilson. This was an important community gathering place for movies, plays, dances and fundraisers for decades. *Photo Courtesy David Takacs Collection.*

Wilson Hall was built in 1923 by John and Dave Wilson. When they announced they were constructing the building, it was to be a “modern rustic hall”. It was 46 by 100 feet and had a stage, “rest room for ladies and a smoking room for gentlemen, hard-wood maple floor and rustic interior.” This hall would serve as a community center for decades. By 1930, every weekend one could attend a movie followed by a dance. The Wilson home was directly behind the hall.

A large façade was constructed in the 1960s to give the structure a more modern look, which then became home to various businesses throughout the decades. The poor insulation and aging structure, though, resulted in its razing in the 1990s. The lot has remained empty ever since.

### 32. WELLS FARGO BANK 61 East Pine Street

---



The First National Bank of Pinedale as it appeared in the 1960s. *Photo Courtesy First National bank of Pinedale.*

A plaque on the corner of the Wells Fargo Bank reads, “Pinedale’s Hometown Bank, Established 1963.” The marker is referring to the First National Bank of Pinedale, located in this building for decades. It was the only bank in town from 1963 until 1999, when the First National Bank of Evanston opened a branch, the Bank of Pinedale. In the 1930s, prior to the bank, a log-structured Sinclair Service Station was located on this corner.



### 33. COURTHOUSE LAWN

---

A popular gathering place for the youth in town (of all ages) was on the ice rink created every winter by flooding the lawn with the fire hydrant. For most of the twentieth century, the rink was entertainment for ice skaters, ice dancers, and the ever-popular “broomball.” Most families in town couldn’t afford hockey equipment, but they did have a broom that was used on the ice while chasing a make-shift “puck.”

### 34. SUBLETTE COUNTY ATTORNEYS OFFICE 43 East Pine Street

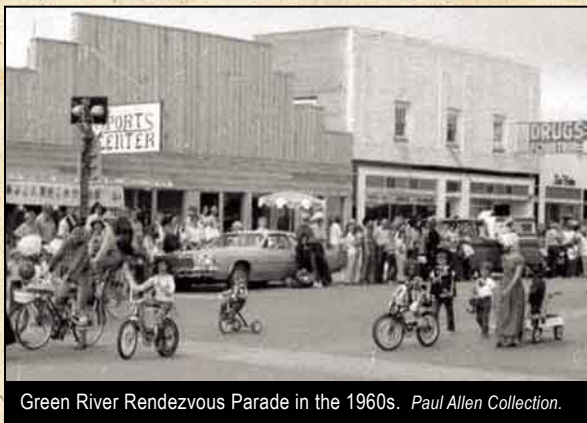
---

In the building directly west of the bank on Pine Street was Murphy Warehouse and Lumber Company. After supplying the town and area with building materials, the business was destroyed by fire on March 11, 1939. In the 1950s, Zieglers Electrical Appliances moved into the spot Murphy’s had been. It would also be a general lumber and supply business in addition to a hardware store. It would later transition into True Value Hardware until the 1990s, then a “dollar store” and restaurant.

### 35. HERITAGE QUILTS 21 East Pine Street

---

Brothers Albert “Sunny” and Frank Korfanta moved to Pinedale in the 1930s and opened the Drug Store on Pine Street (21 East Pine Street). Their first building was nearly destroyed by fire on March 11, 1939, but they immediately rebuilt. Initially they opened the drug store in the western half of the first floor while a restaurant, Elk Café, was in the other half. After a few years, the restaurant closed, and the Korfantas took over the whole first



Green River Rendezvous Parade in the 1960s. Paul Allen Collection.

floor for their business. The Korfanta Drug Store was a gathering place for community members well into the 1980s. Adults would gather for coffee in the mornings at sit at the long counter or in a booth, to be replaced at noon with school children who often had a milkshake for lunch.

### >> RETURN TO VISITOR’S CENTER

For more on Pinedale’s exâting mountain man and rendezvous history visit:  
The Museum of the Mountain Man - 700 East Hennick Street (307-367-4101)  
Online at [museumofthemountainman.com](http://museumofthemountainman.com) (Open seasonally May 1 - Oct. 31)

SPECIAL THANKS TO:



---

**TOUR ORGANIZED BY MAIN STREET PINEDALE [www.mainstreetpinedale.com](http://www.mainstreetpinedale.com)**

---

History by  
ANN NOBLE  
[chambershouse.com](http://chambershouse.com)

Funding for history provided by  
SUBLETTE COUNTY PRESERVATION BOARD  
[sublette.com/photohistory](http://sublette.com/photohistory)

Graphic Design by  
TIM RULAND/BOXCAR ARTS  
[boxcararts.com](http://boxcararts.com)



## ★ A HISTORY OF PINEDALE'S STREET & AVENUE NAMES ★

---

### **FREMONT AVENUE**

Fremont Avenue is named for John Charles Fremont, and early American military officer and explorer for whom Fremont Lake and Fremont Peak are also name-sakes. Fremont visited the area in 1845.

### **TYLER AVENUE**

Tyler Avenue is named for the Frank Tyler Family, who came to the area to ranch west of town at the intersection of Highways 191 and 352 to Cora, with property on the north and south sides of 191. Frank and his five brothers worked in the area often by hauling freight between Rock Springs and Pinedale.

Son Frank and his wife Lillian moved to town in the 1940s and built a house north of Pine Street near what would be Tyler Street. Frank and his brothers also constructed other homes in this section of town, hauling all their own logs. Tyler Street is named in recognition of the work the family did in building the section of town north of Pine Street and around Tyler Street.

### **FRANKLIN AVENUE**

Franklin Avenue was named by John F. Patterson in honor of his oldest son. Franklin was also John's middle name. It was the town's original main street.

### **MILL STREET**

Mill Street is the south boundary of the original town, and named for the location of the town mill. Charles Petersen set up a mill on his property next to the original town on the south side of Mill Street. Using water power from Pine Creek, the 35-horse power engine turned out shingles, sidings, moldings, and all finishing lumber from logs cut and rafted down Fremont Lake.

### **LAKE AVENUE**

Lake Avenue was named on the town's original plat, and defined the west boundary of the new town. It is likely named for the street leading to Fremont Lake.

### **MAGNOLIA STREET**

Magnolia Street defined the north boundary of the original town site, but its name origin has remained a mystery. The east end of Magnolia Street developed as the "motel" section of town, with many of the original motor courts and motels located here.

### **MAYBELL AVENUE**

Maybell Avenue was named by John F. Patterson in honor of his wife. On the original town plat, however, was the correct spelling, Maybel. This street defined the east boundary of the original town site.

### **SUBLETTE AVENUE**

Sublette Avenue is named for William Sublette, the namesake for the county. Sublette was a fur trapper, pioneer, mountain man, agent, and later, one of the owners of the Rocky Mountain Fur Company that participated in the nearby Rendezvous.

{2020}