



## Appendix B

### Vizion PMA Autopilot 177 Installation

**RESTRICTION ON USE, DUPLICATION, OR DISCLOSURE OF  
PROPRIETARY INFORMATION**

THIS DOCUMENT CONTAINS PROPRIETARY INFORMATION OF TRUTRAK FLIGHT SYSTEMS, INC. AND MAY NOT BE REPRODUCED, COPIED, DISCLOSED OR UTILIZED IN ANY WAY, IN WHOLE OR IN PART, WITHOUT THE PRIOR WRITTEN CONSENT OF TRUTRAK FLIGHT SYSTEMS, INC.

**Prepared by**

**TruTrak Flight Systems, Inc.**

|                    | <b>Function/Title</b> | <b>Name</b>     |
|--------------------|-----------------------|-----------------|
| <b>Prepared by</b> | President             | Andrew Barker   |
| <b>Prepared by</b> | Engineering           | Zach Williamson |
| <b>Checked by</b>  | GM                    | Moss Foster     |
| <b>Approved by</b> | President             | Andrew Barker   |



## Table of Contents

|   |           |
|---|-----------|
| <b>1) Document Revision History .....</b>                   | <b>3</b>  |
| <b>2) Cessna 177 Roll Servo Installation.....</b>           | <b>4</b>  |
| a) Roll Materials List .....                                | 4         |
| b) Roll Servo Mounting Instructions .....                   | 5         |
| <b>3) Cessna 177 Pitch Servo Bracket Installation .....</b> | <b>12</b> |
| a) Pitch Materials List.....                                | 12        |
| b) Pitch Servo Bracket Mounting Instructions .....          | 13        |
| <b>4) Cessna 177 Wiring Harness Installation.....</b>       | <b>27</b> |
| a) Wiring Harness Materials List .....                      | 27        |
| b) C177 Wiring Harness Diagram.....                         | 28        |
| c) Wiring Harness Mounting Instructions .....               | 29        |
| <b>5) Cessna 177 Autopilot Settings .....</b>               | <b>41</b> |
| a) Lateral Autopilot Settings.....                          | 41        |
| b) Vertical Autopilot Settings .....                        | 42        |

## 1) Document Revision History

| Rev   | Description      | Pages | Date    |
|-------|------------------|-------|---------|
| Init. | Document created | 43    | 11-1-17 |
|       |                  |       |         |
|       |                  |       |         |
|       |                  |       |         |
|       |                  |       |         |
|       |                  |       |         |
|       |                  |       |         |
|       |                  |       |         |

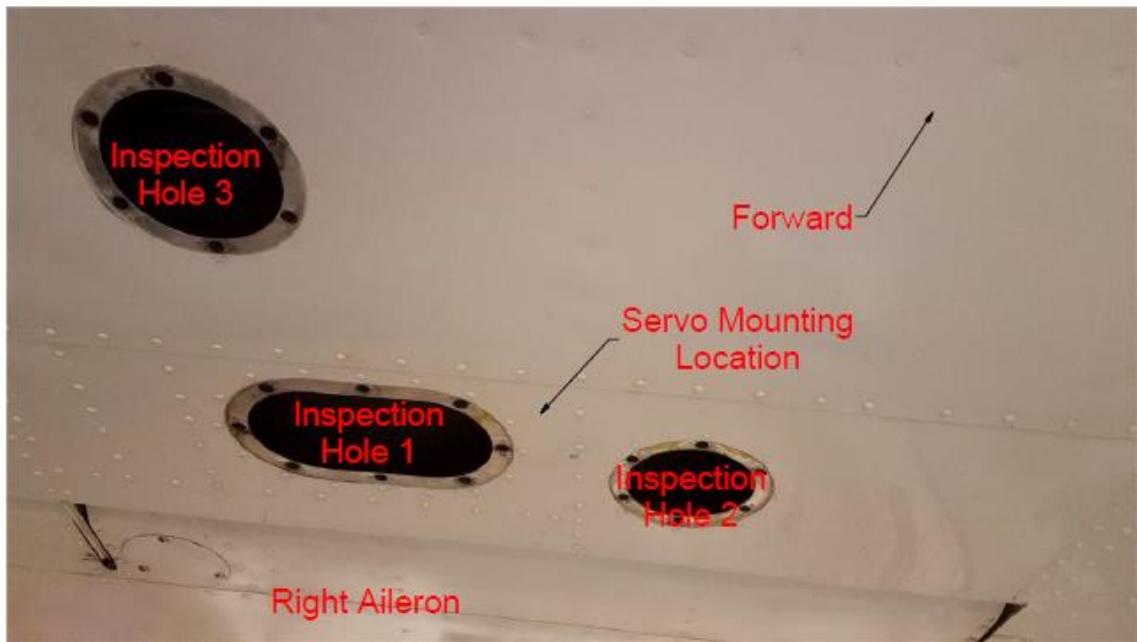
## 2) Cessna 177 Roll Servo Installation

### a) Roll Materials List

| Qty. | Description                              | Trutrak P/N |
|------|--|-------------|
| 1    | Cessna 177 Roll Drill Jig                | 1450-116    |
| 1    | MS20364-1032                             |             |
| 2    | AN970-3                                  |             |
| 1    | AN315-4                                  |             |
| 1    | AN345-10                                 |             |
| 1    | AN3-11A                                  |             |
| 8    | AN3-3A                                   |             |
| 10   | AN960-10                                 |             |
| 3    | MS35333-39                               |             |
| 2    | AN3-4A                                   |             |
| 1    | AN960-416                                |             |
| 1    | AN960-416L                               |             |
| 1    | AN3-13A                                  |             |
| 3    | 8-32 x 3/8 Flat Head Socket Cap Screw SS | 2500-216    |
| 1    | MM-3-300 Rod End Bearing                 | 2510-051    |
| 1    | CM-3B-14 Rod End Bearing                 | 2510-052    |
| 1    | Aluminum Spacer                          | 2510-073    |
| 1    | Steel Bushing                            | 2510-202    |
| 1    | Push Rod                                 | 2520-061    |
| 1    | Cessna 177 Roll Bracket Assembly         | 7200-093    |
| 1    | Servo Arm                                | 7200-096    |
| 1    | PMA Link Sensor                          | 8000-177    |
| 1    | 60 inch/lb PMA servo                     | 8100-064    |
|      | OR                                       | OR          |
|      | 60 inch/lb 24 Volt PMA servo             | 8100-065    |

**b) Roll Servo Mounting Instructions**

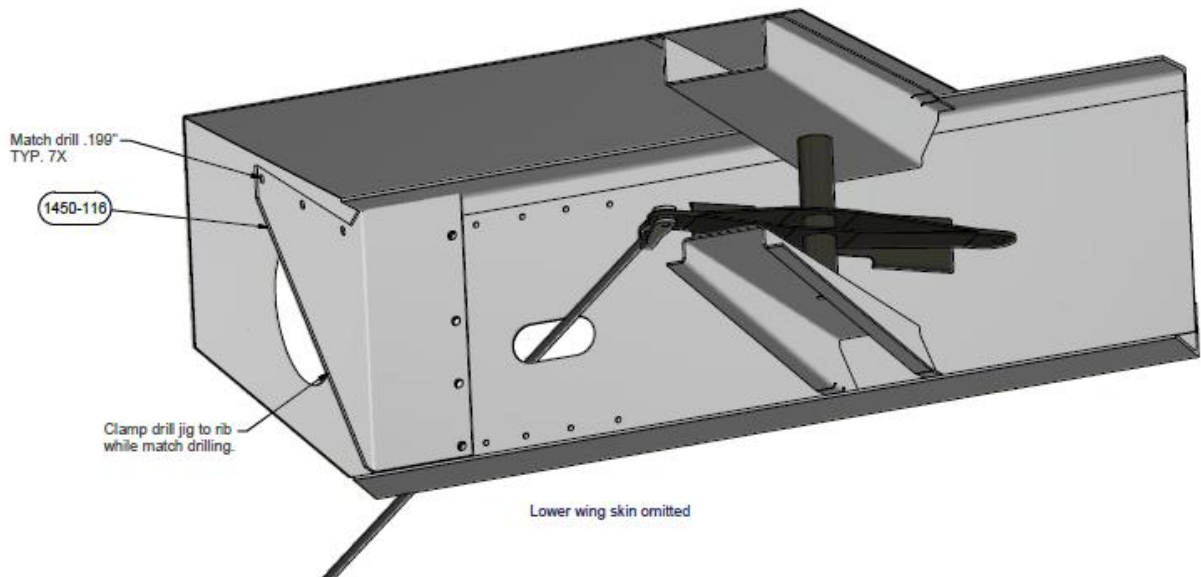
- i) The roll servo will be mounted in the right wing just forward of the inboard end of the aileron. Figure 2-1 shows the roll servo mounting location from below the right wing.
- ii) Begin by removing the inspection covers 1, 2 and 3 on the lower wing skin located forward of the inboard end of the aileron.



**Figure 2-1**

iii) Drill Cessna 177 Roll Bracket Mounting Holes

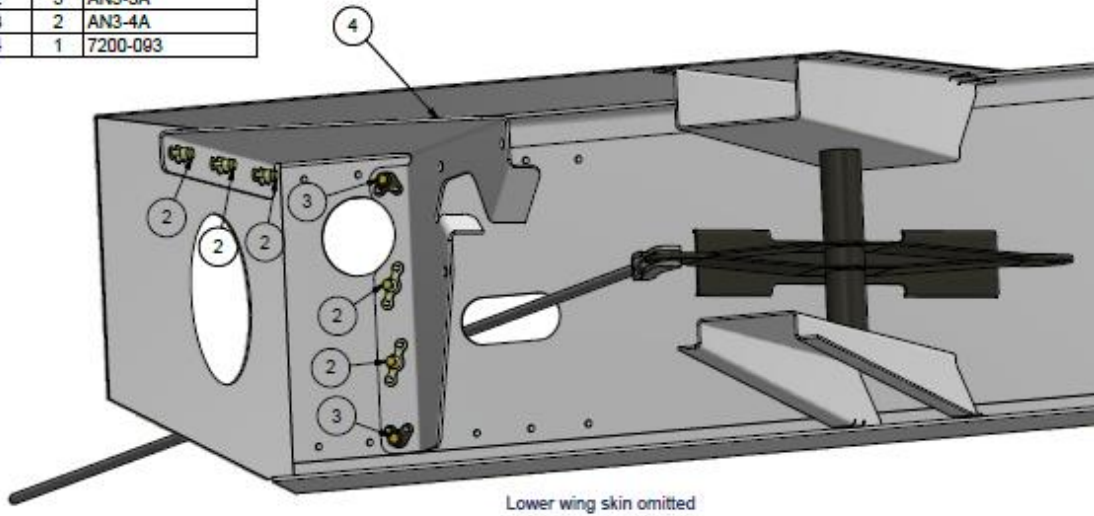
- (1) Working through inspection hole 1, locate Cessna 177 Roll Drill Jig (P/N 1450-166) as shown in Figure 2-2. Vertical spacing of the drill jig is accomplished by placing the top surface of the forward portion of the jig against the upper spar flange.
- (2) Clamp the drill jig to the rib through the lightening hole as shown. Ensure that the drill jig is firmly against the spar and rib.
- (3) Match drill the spar and rib in 7 places through the drill jig. After drilling each hole secure the drill jig to the aircraft using a cleco or 10-32 fastener to restrict movement of the drill jig.
- (4) After drilling is complete remove the drill jig from the aircraft.



**Figure 2-2**

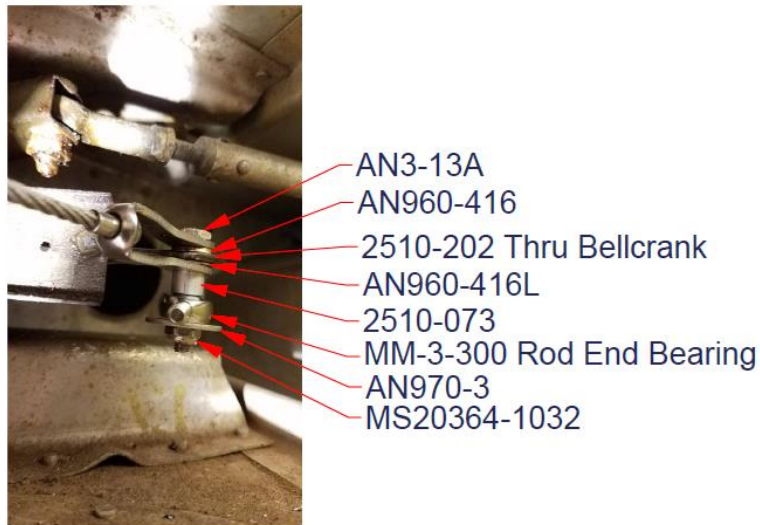
- iv) Install Cessna 177 Roll Bracket Assembly (P/N 7200-093)
- (1) Place the Cessna 177 Roll Bracket Assembly as shown in Figure 2-3.
  - (2) Install AN3 bolts in locations shown in figure 2-3 placing an AN960-10 washer under each bolt head. Torque bolts to 20-25 in-lb.

| Parts List |     |             |
|------------|-----|-------------|
| ITEM       | QTY | PART NUMBER |
| 1          | 7   | AN960-10    |
| 2          | 5   | AN3-3A      |
| 3          | 2   | AN3-4A      |
| 4          | 1   | 7200-093    |



**Figure 2-3**

- v) Install Rod End on Aileron Bellcrank
  - (1) Remove existing bolt connecting the aileron control cable to the aileron bellcrank
  - (2) Enlarge the hole in the bellcrank where the aileron control cable was attached using a .257" (F size) drill bit.
  - (3) Place the steel bushing (P/N 2510-202) in the .257" hole and reconnect the aileron control cable as shown in Figure 2-4. Torque AN3-13A bolt to 20-25 in-lb.

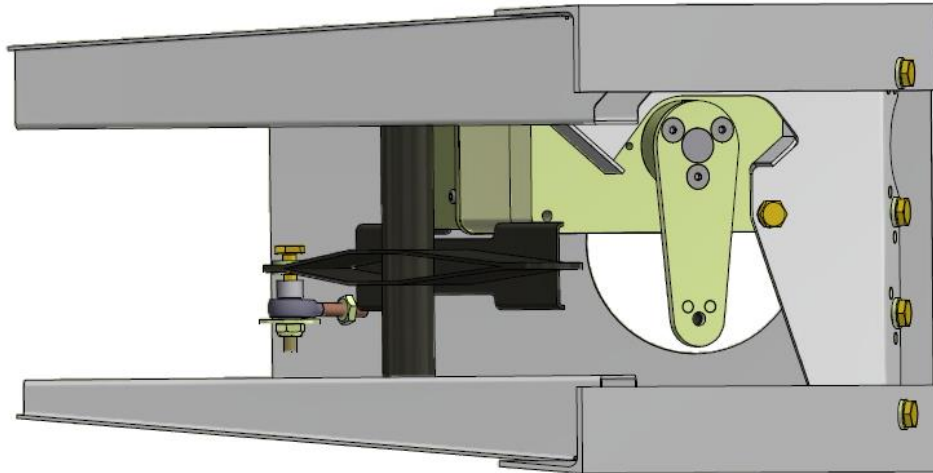


**Figure 2-4**

- (4) Verify that the feel of the controls in roll have not changed as this could indicate that a control cable has come off of the pulley. This bolt replacement should be able to be accomplished without re-tensioning the aileron control cables.
- vi) Assemble Servo Arm (P/N 7200-096) and 60 inch/lb PMA servo (P/N 8100-064 for 12 volt or P/N 8100-065 for 24 volt).
  - (1) Attach the Servo Arm (P/N 7200-096) to the 60 inch/lb PMA servo (P/N 8100-064 for 12 volt or P/N 8100-065 for 24 volt) using the provided 8-32 x 3/8" flat head screws.
  - (2) Use blue threadlocker (Loctite 242 or equivalent) and torque the screws to 18-20 in-lb.
- vii) Pause the servo installation and move to the Wiring Harness Mounting Instructions
- viii) Trim the roll wiring harness to length and terminate according to the C177 Wiring Harness diagram.

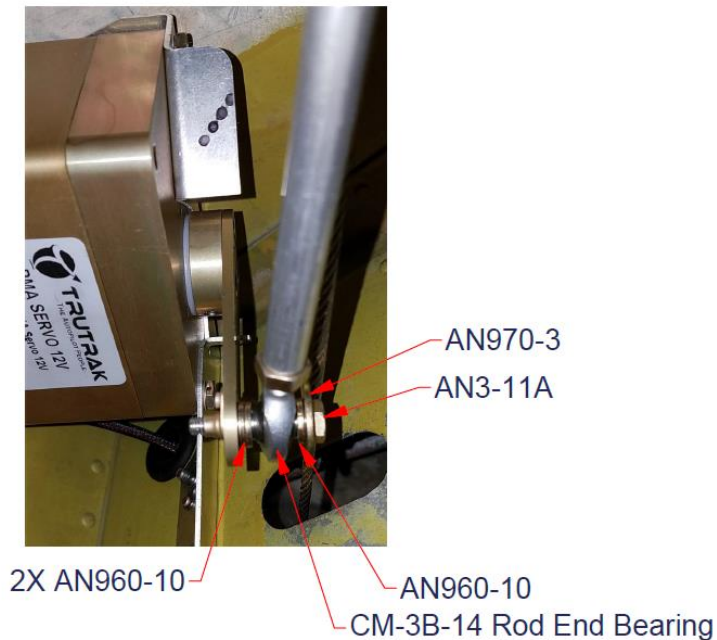


- ix) Install 60 inch/lb PMA servo (P/N 8100-064 for 12 volt or P/N 8100-065 for 24 volt).
- (1) Attach the electrical connector to the roll servo and secure it in place with the mounting screws. Torque to approximately 2-3 in-lb.
  - (2) Place the servo behind the mounting bracket with the arm oriented between the servo stops as shown in Figure 2-5.



**Figure 2-5**

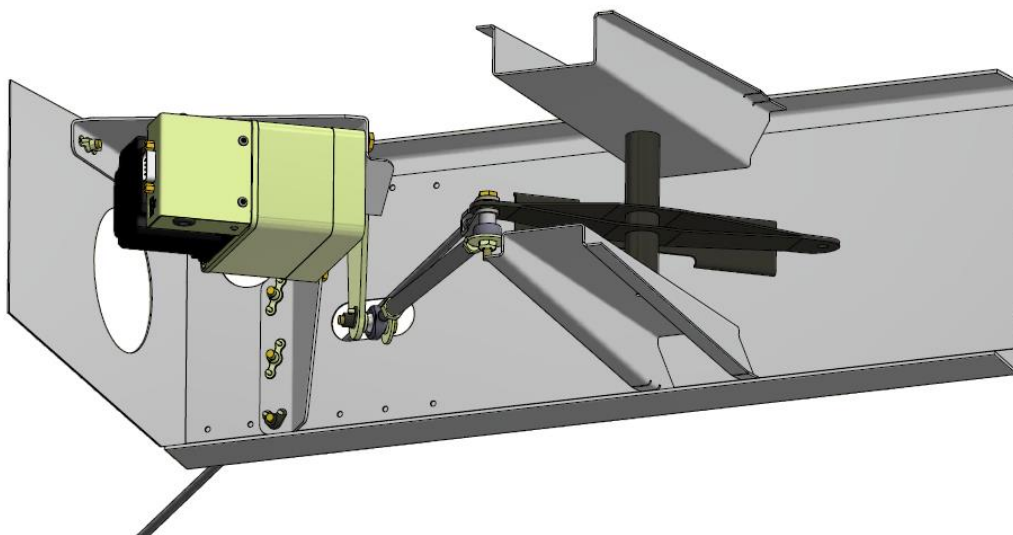
- (3) Attach the servo to the Cessna 177 Roll Bracket Assembly (P/N 7200-093) using 3 AN3-3A bolts with MS35333-39 lock washers and blue threadlocker (Loctite242 or equivalent) torqued to 20-25 in-lb.
- x) Install Push Rod
- (1) Fully thread an AN315-4 nut on the CM-3B-14 Rod End Bearing (P/N 2510-052) then thread the push rod (P/N 2520-061) approximately half way on the rod end bearing.
  - (2) Fully thread an AN345-10 nut on the MM-3-300 Rod End Bearing (P/N 2510—051) that is attached to the aileron bellcrank.
  - (3) Thread the push rod (P/N 2520-061) approximately half way on MM-3-300 Rod End Bearing (P/N 2510—051).
  - (4) Adjust just rod end bearings so that full aileron deflection will move the servo arm equally between the stops built in to the Cessna 177 Roll Bracket Assembly (P/N 7200-093).
  - (5) Attach the inboard end of the push rod assembly to the servo arm as shown in Figure 2-6. Torque AN3-11A bolt to 20-25 in-lb.



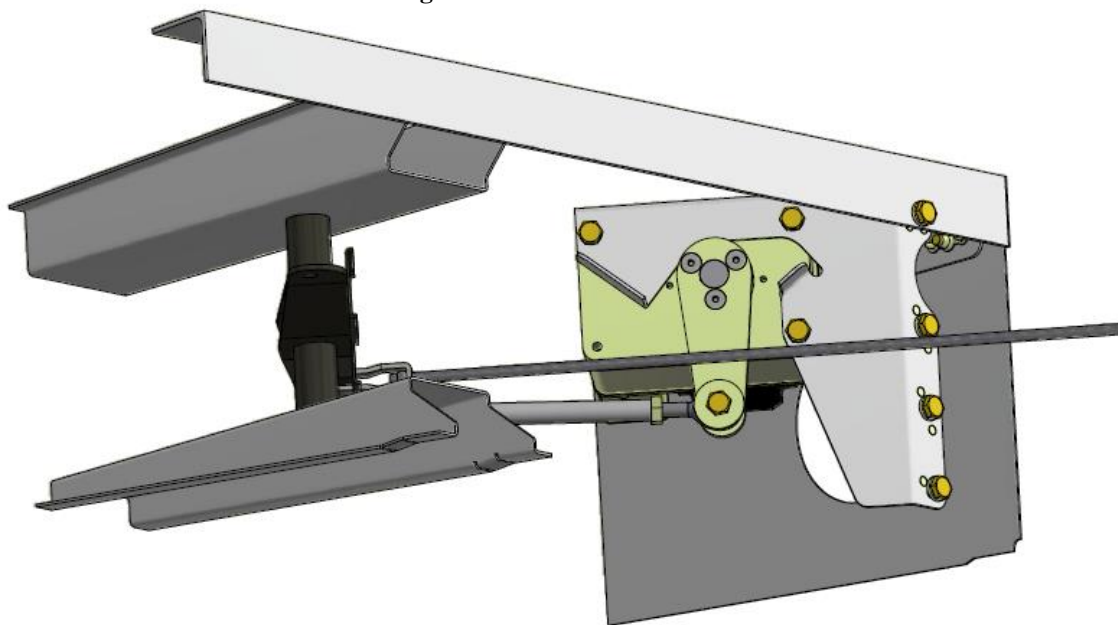
**Figure 2-6**

- (6) Adjust push rod so that both rod end bearings are threaded evenly.
- (7) Use blue threadlocker (Loctite 242 or equivalent) and torque the jam nuts to 20-25 in-lb. Verify that both rod ends can move freely throughout full aileron travel.

xi) Figure 2-7 and Figure 2-8 show full servo installation



**Figure 2-7**



**Figure 2-8**

xii) Reinstall Inspection Covers

- (1) Verify that the roll controls move freely and that there is not contact interference between the mounted roll servo assembly and the aileron controls.
- (2) Reinstall the inspection covers removed at the beginning of the roll servo installation.

### 3) Cessna 177 Pitch Servo Bracket Installation

#### a) Pitch Materials List

| Qty. | Description  | Trutrak P/N                |
|------|--|----------------------------|
| 1    | Cessna 177 Pitch Plate                                     | 1450-112                   |
| 1    | Cessna 177 Pitch Arm                                       | 1450-114                   |
| 7    | MS20364-1032   |                            |
| 2    | AN970-3  |                            |
| 2    | AN315-4  |                            |
| 1    | AN3-10A  |                            |
| 1    | AN3-7A   |                            |
| 14   | AN3-3A   |                            |
| 10   | AN960-10   |                            |
| 4    | MS35333-39   |                            |
| 3    | 8-32 x 3/8 Flat Head Socket Cap Screw SS                   | 2500-216                   |
| 2    | CM-3B-14 Rod End Bearing                                   | 2510-052                   |
| 5    | BSPQ-44 Rivet  |                            |
| 1    | Microfit 6 Position Cable 1M                               | 6000-063                   |
| 1    | MS-34589-20  |                            |
| 1    | Servo Arm  | 7200-091                   |
| 1    | Cessna 177 Pitch Bracket Assembly                          | 7200-092                   |
| 1    | Cessna 177 Pitch Push Rod Assembly                         | 7200-098                   |
| 1    | 60 inch/lb PMA servo<br>OR<br>60 inch/lb 24 Volt PMA servo | 8100-064<br>OR<br>8100-065 |

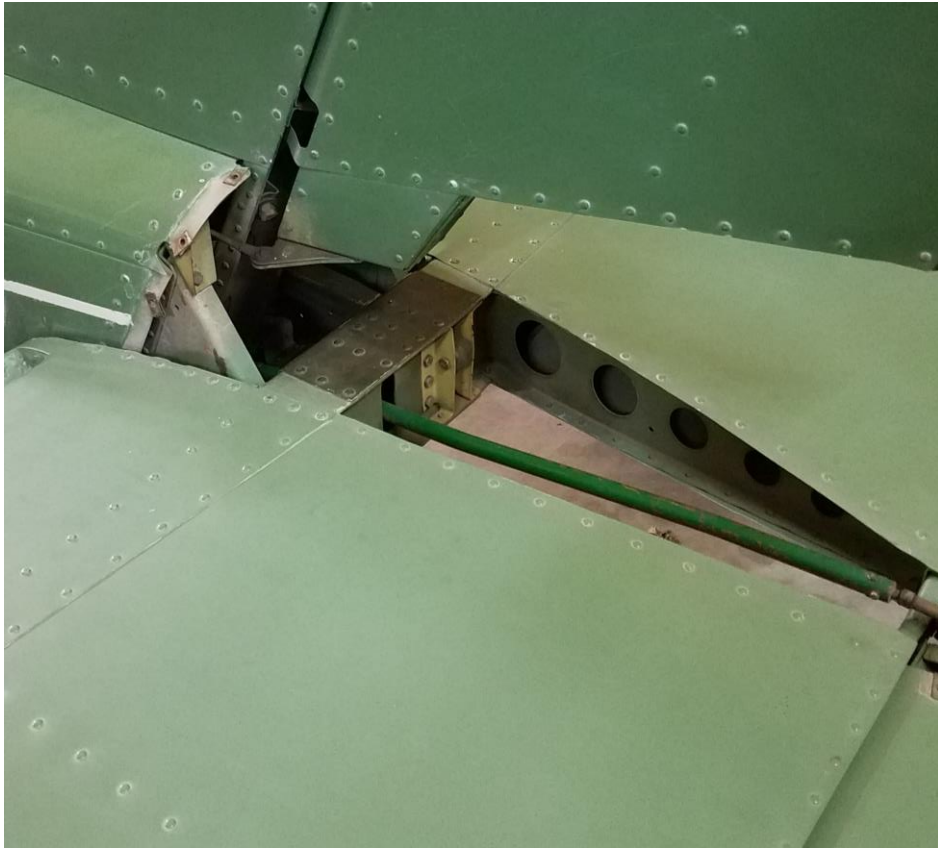
**b) Pitch Servo Bracket Mounting Instructions**

- i) The Cessna 177 pitch servo will be mounted in the rear fuselage at the former location (station 263.0) shown in figure 3-1.



**Figure 3-1**

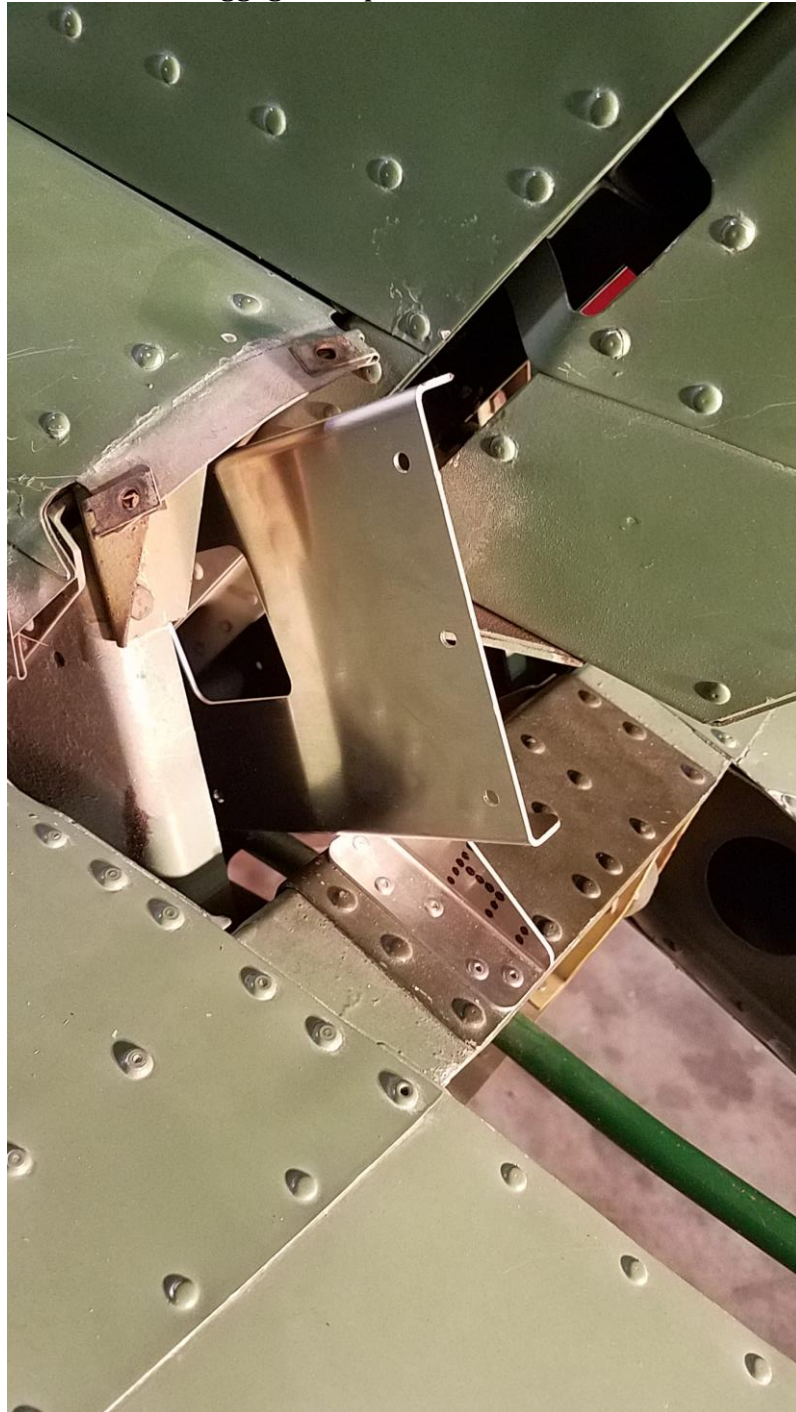
- ii) Remove bulkhead aft of the baggage compartment.
- iii) Remove the inspection covers located fore and aft of the servo mounting former (station 263.0) of both sides of the aircraft.
  - (1) Remove the tailcone exposing the upper side of the stabilator.



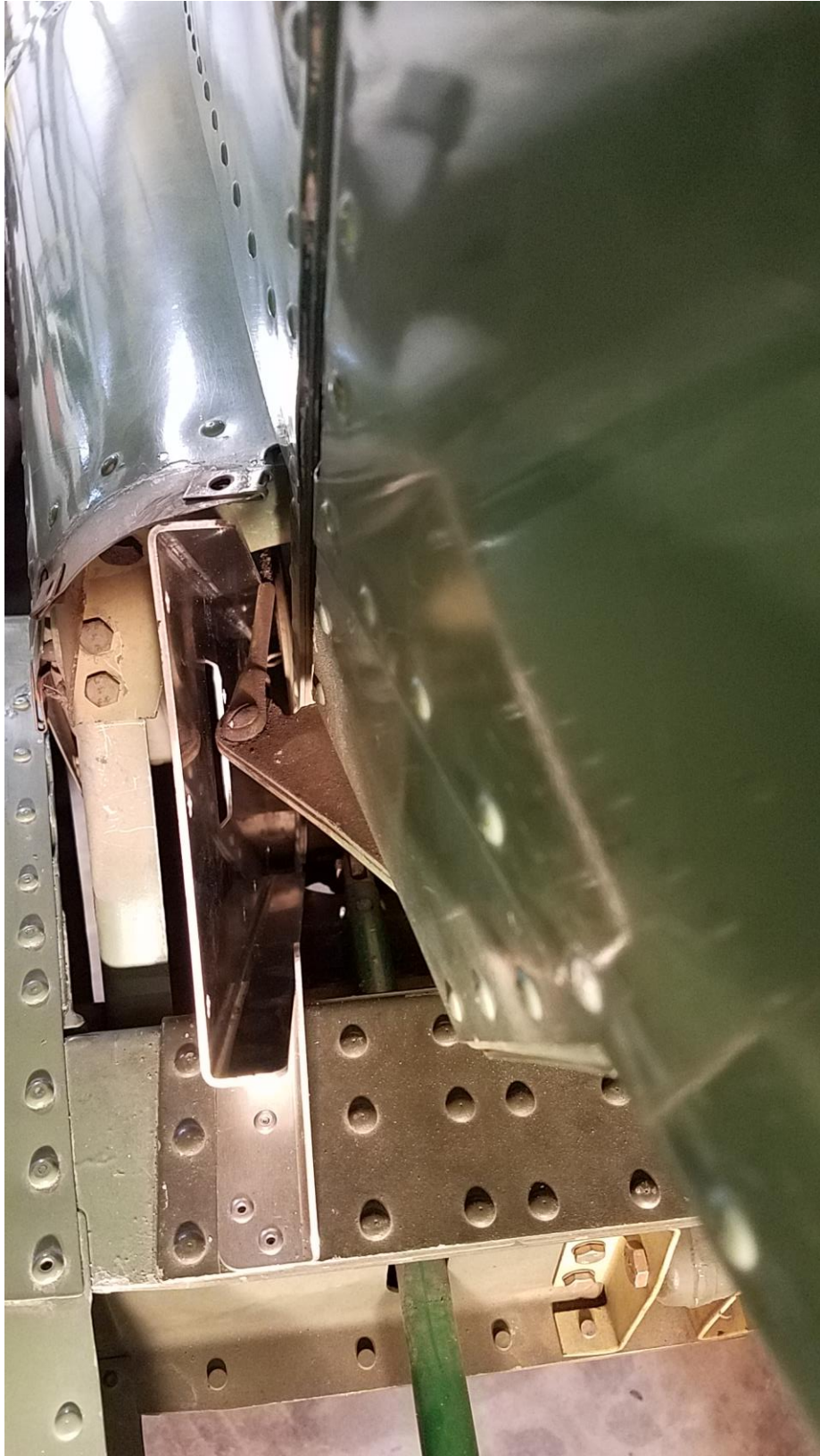
**Figure 3-2**



- iv) 177 RG only- Insert Cessna 177 Pitch Plate (P/N 1450-112) in rear portion of fuselage as shown. Non-RG's may insert the plate through the bulkhead aft of the baggage compartment.



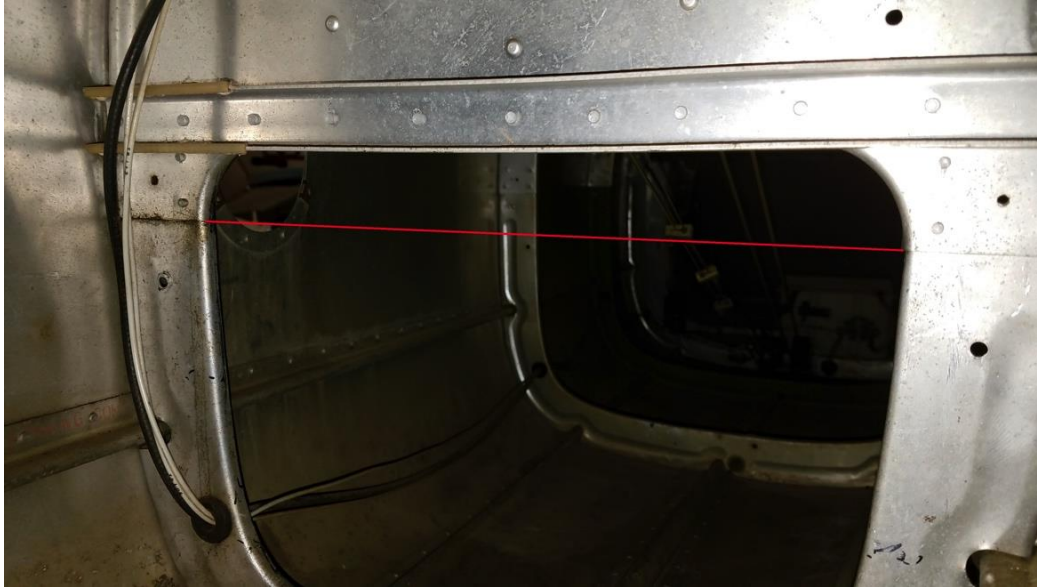
**Figure 3-3**



**Figure 3-4**

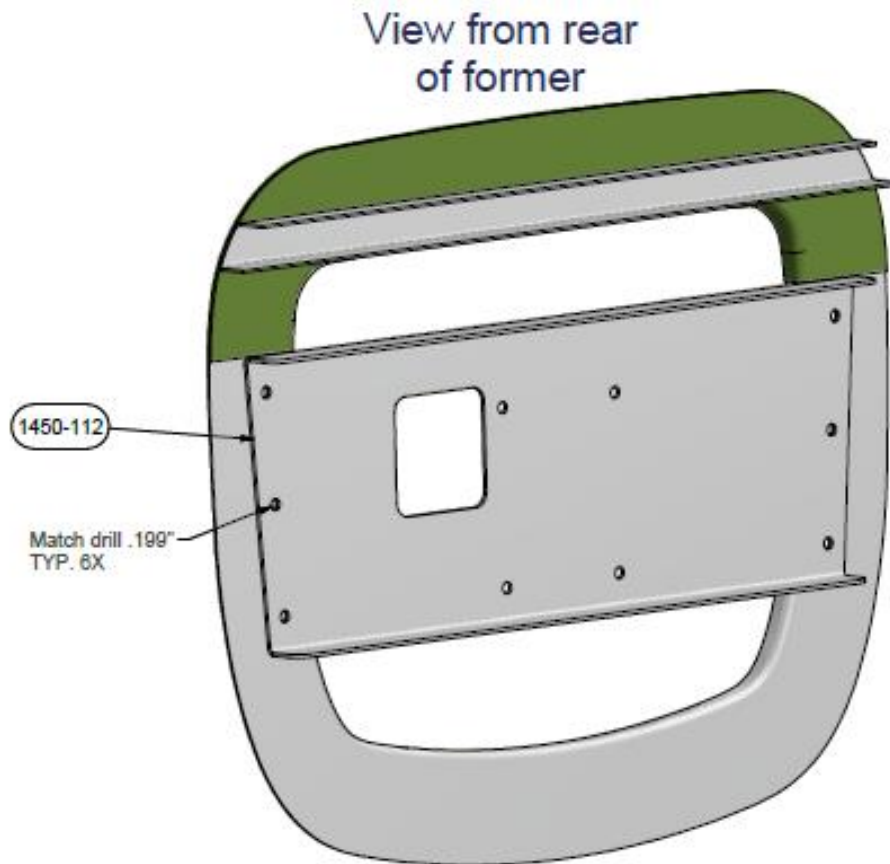


- v) Drill holes for mounting of Cessna 177 Pitch Plate, (P/N 1450-112)  
(1) Clamp the Cessna 177 pitch plate to the rear side of the former. The upper flange on the pitch plate must be level with seam in the former shown in Figure 3-5. Center the pitch plate left to right in the fuselage.



**Figure 3-5**

- vi) 177RG only - The 177RG has a cover riveted to the former. Once the plate is properly located against the aft side of the cover mark the location of the rivets on the plate and drill clearance holes so that the plate sets flat against the cover.
- vii) Match drill the former with the 6 holes in the Cessna 177 Pitch Plate, (P/N 1450-112) as shown in Figure 3-6. After drilling each hole secure the pitch plate to the aircraft using a cleco or 10-32 bolt.



**Figure 3-6**

- viii) 177RG only- Match drill the 4 pitch bracket mounting holes with the former cover. Mark the outline of the rectangular opening on the former cover and cut to match. The rectangular opening may be cut slightly larger than the opening on the pitch plate.
- ix) Attaching the Pitch Bracket Assembly (7200-092) to the Pitch Plate (P/N 1450-112)
- x) Attach the Pitch Bracket Assembly to the Pitch Plate as shown in Figure 3-7. Torque AN3-3A bolts to 20-25 in-lb. In the 177RG the former cover will be located between the Pitch Bracket Assembly (7200-092) the Pitch Plate (P/N 1450-112).

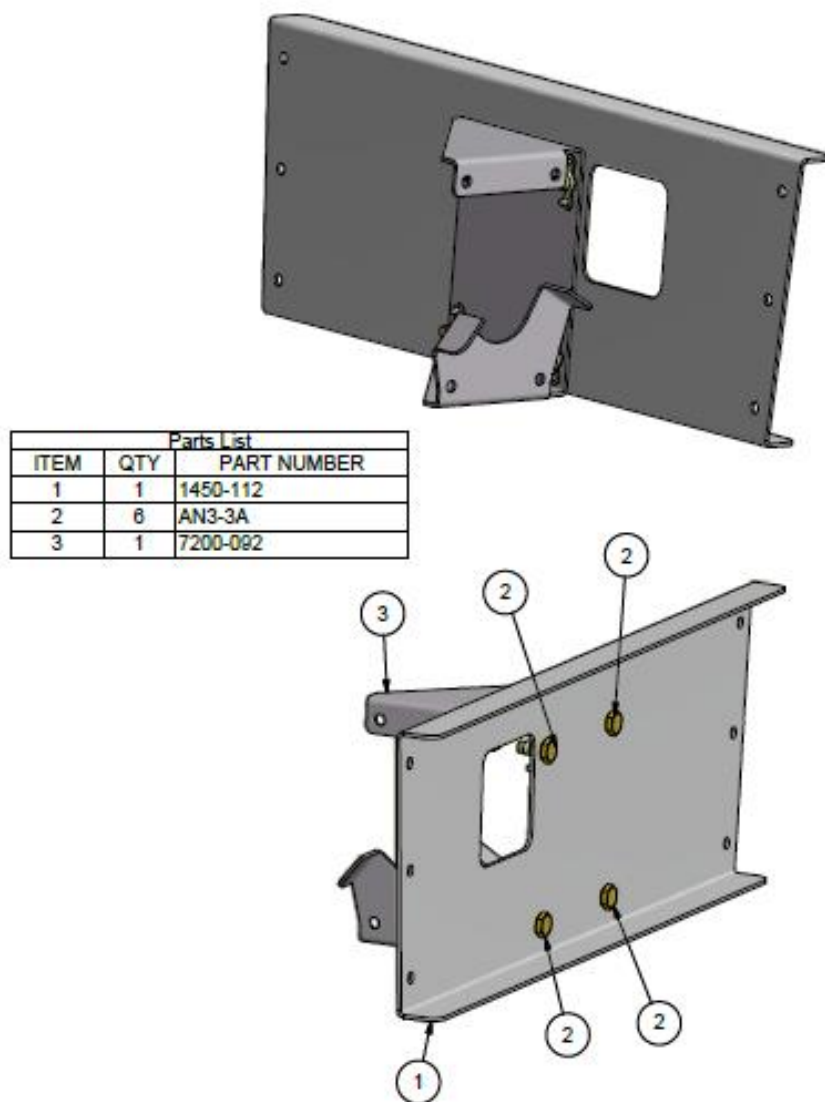


Figure 3-7

- xi) Attach the Cessna 177 Pitch Plate, (P/N 1450-112) and Pitch Bracket Assembly (7200-092) to the former.
  - (1) Attach the Torque Pitch Plate and Pitch Bracket Assembly to the former as shown in Figure 3-8. Torque bolts to 20-25 in-lb.

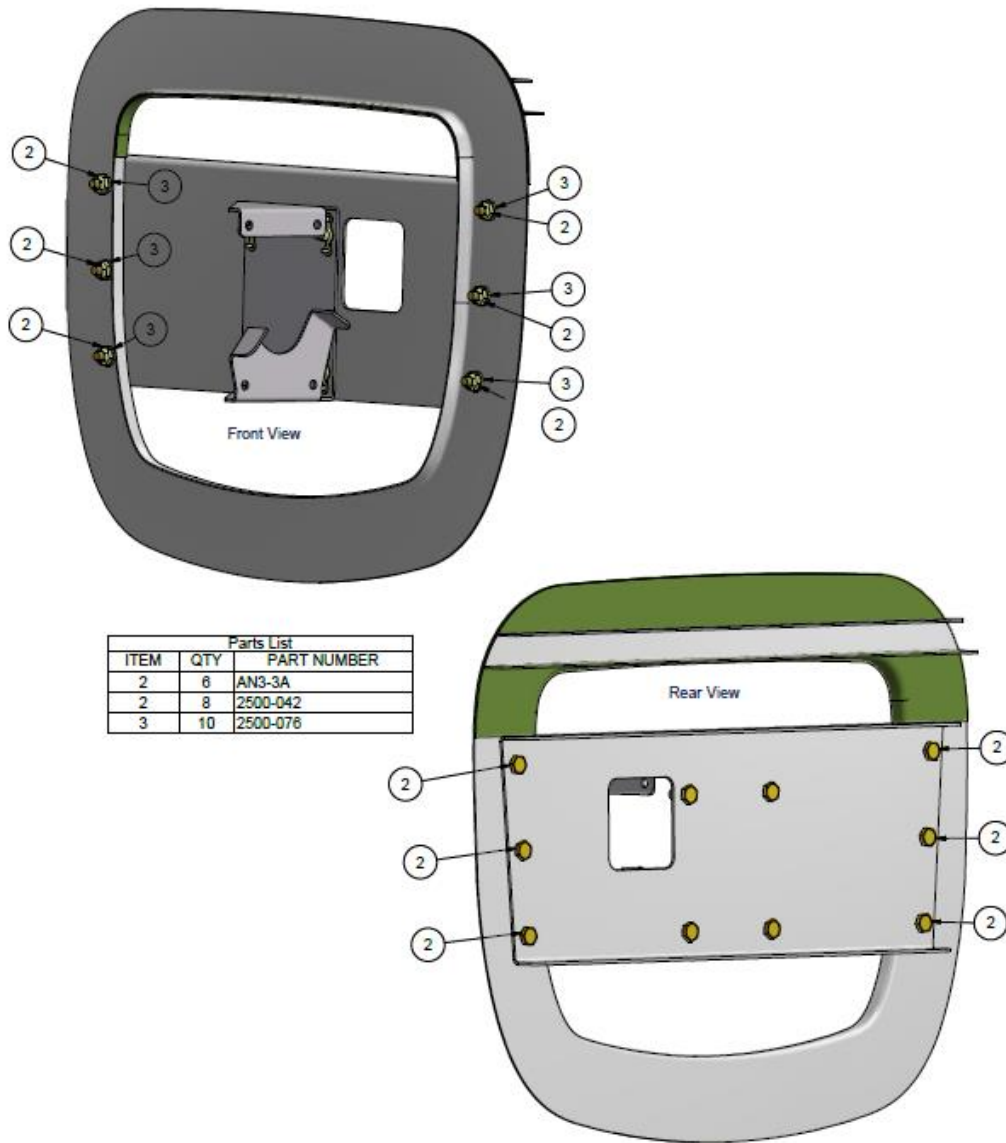
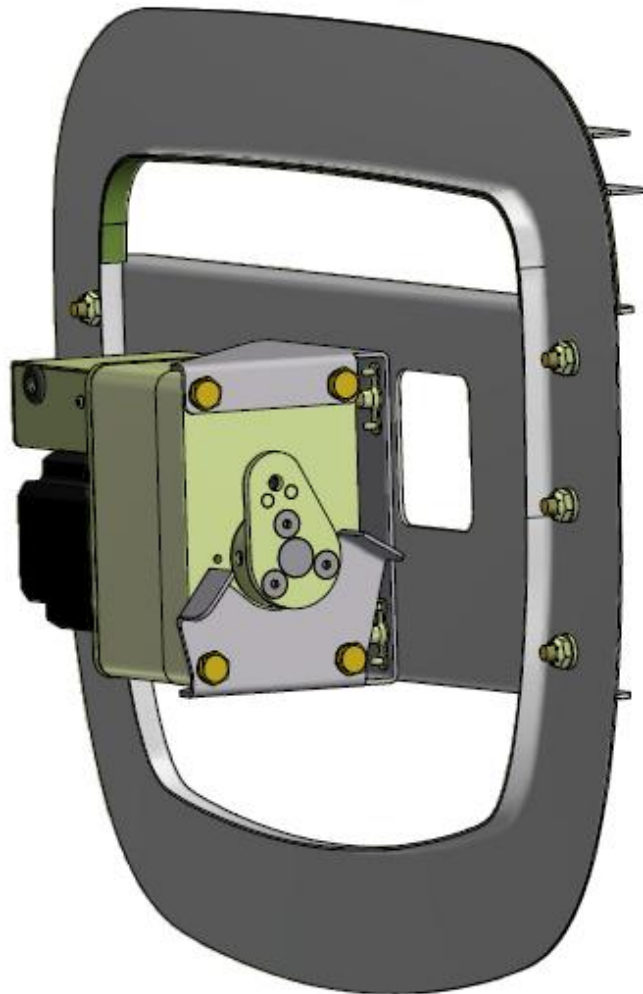


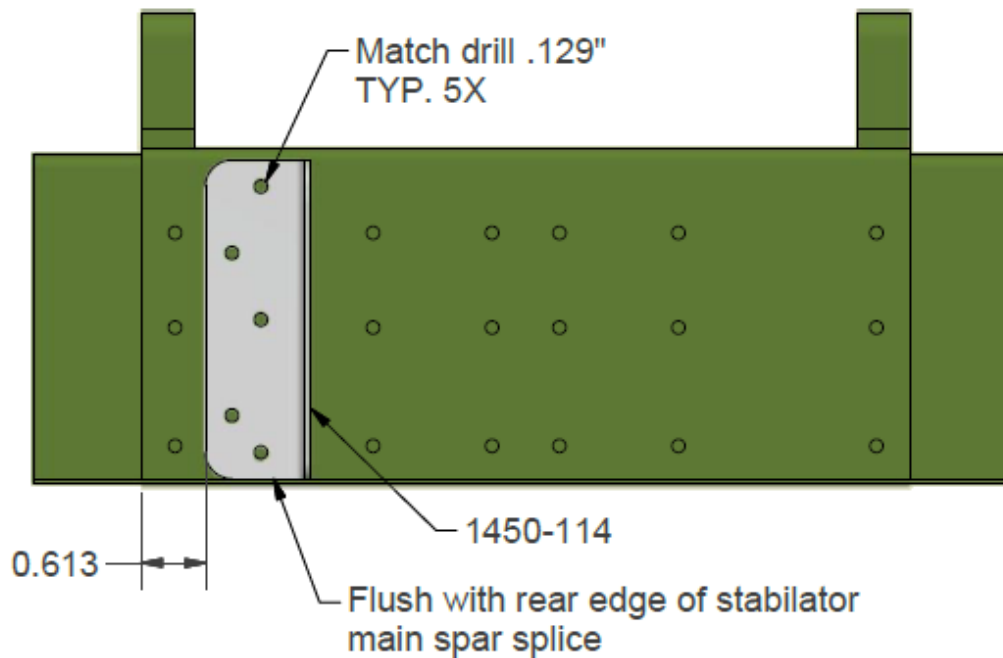
Figure 3-8

- xii) Assemble Servo Arm (P/N 7200-091) and 60 inch/lb PMA servo (P/N 8100-064 for 12 volt or P/N 8100-065 for 24 volt).
- (1) Attach the Servo Arm (P/N 7200-091) to the 60 inch/lb PMA servo (P/N 8100-064 for 12 volt or P/N 8100-065 for 24 volt) using the provided 8-32 x 3/8" flat head screws.
  - (2) Use blue threadlocker (Loctite 242 or equivalent) and torque the screws to 18-20 in-lb.
- xiii) Attach the 60 inch/lb PMA servo (P/N 8100-064 for 12 volt or P/N 8100-065 for 24 volt) to the Cessna 177 Pitch Bracket Assembly (P/N 7200-092)
- (1) Trim the pitch wiring harness to length and terminate according to the C177 Wiring Harness diagram.
  - (2) Attach the electrical connector to the roll servo and secure it in place with the mounting screws. Torque to approximately 2-3 in-lb.
  - (3) Place the servo behind the mounting bracket with the arm oriented between the servo stops as shown in Figure 3-9



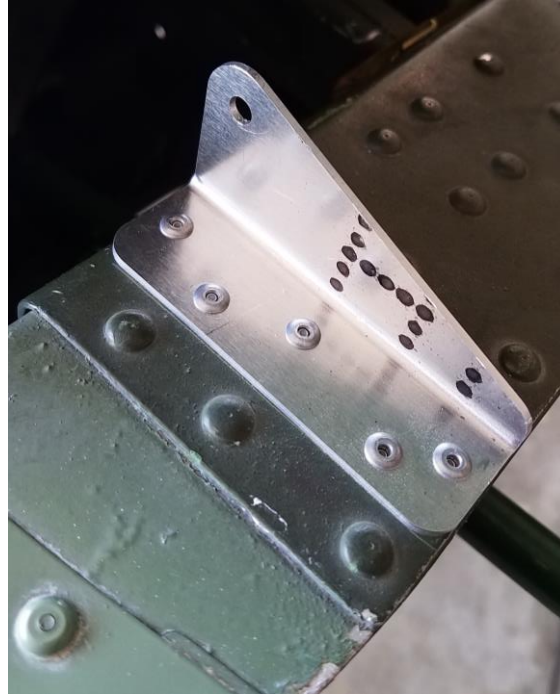
**Figure 3-9**

- (4) Attach the servo to the Cessna 177 Pitch Bracket Assembly (P/N 7200-092) using 4 AN3-3A bolts with MS35333-39 lock washers and blue threadlocker (Loctite242 or equivalent) torqued to 20-25 in-lb.
- xiv) Attach the Cessna 177 Pitch Arm (P/N 1450-114) to the stabilator
- (1) Position the Cessna 177 Pitch Arm (P/N 1450-114) on top of the stabilator as shown in Figure 3-10.



**Figure 3-10**

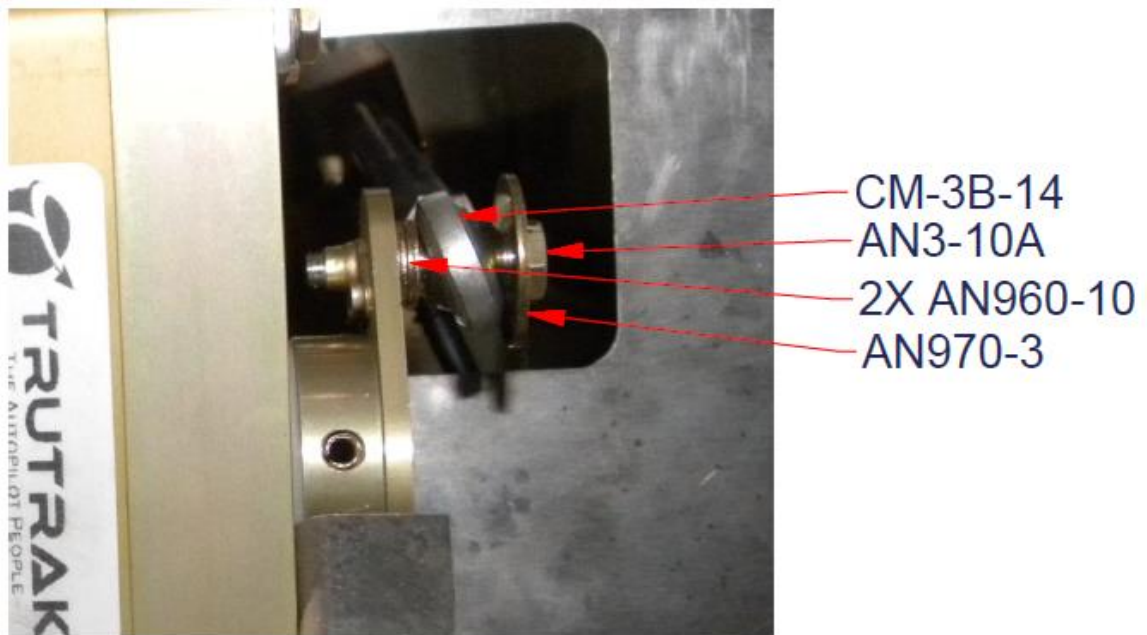
(2) Match drill and the stabilator and rivet the Cessna 177 Pitch Arm (P/N 1450-114) in place using 5 ea. BSPQ-44 rivets.



**Figure 3-11**



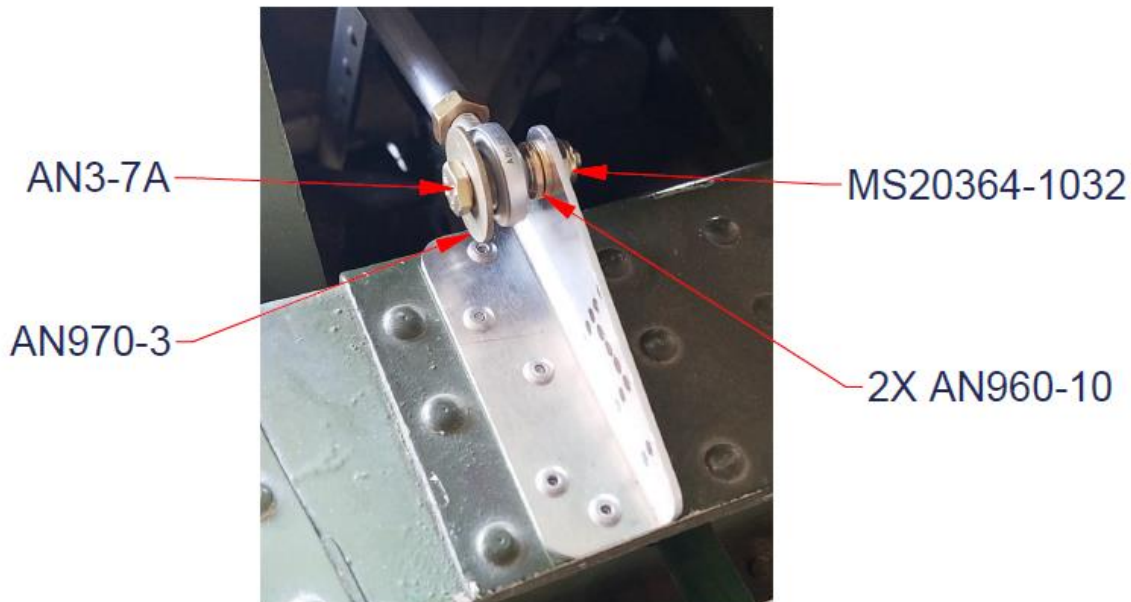
- xv) Attach the Cessna 177 Pitch Push Rod Assembly (P/N 7200-098)
- (1) The Cessna 177 Pitch Push Rod Assembly (P/N 7200-098) is a factory built assembly and should not be disassembled.
  - (2) Fully thread an AN315-4 nut on each of the CM-3B-14 Rod End Bearings (P/N 2510-052).
  - (3) Thread one of the CM-3B-14 Rod End Bearings (P/N 2510-052) half way into each end of the Cessna 177 Pitch Push Rod Assembly (P/N 7200-098).
  - (4) Attach the forward end of the Cessna 177 Pitch Push Rod Assembly (P/N 7200-098) to the pitch servo arm (P/N 7200-091) as shown in Figure 3-12. Torque AN3-10A bolt to 20-25 in-lb.



**Figure 3-12**

- (5) Place the stabilator in the full down position. Adjust the rod ends on the push rod assembly so that the rear rod end bearing aligns with the hole in the pitch arm on the stabilator and the servo arm has approximately 1/8" clearance from the rear servo stop.
- (6) Secure the rear rod end bearing to the Cessna 177 Pitch Arm (P/N 1450-114) as shown in Figure 3-13. Verify that the servo arm does not contact either stop when the stabilator is at full up or down deflection. If necessary adjust the rod ends to allow clearance. Torque AN3-7A bolt to 20-25 in-lb.





**Figure 3-13**

- (7) Rotate the Cessna 177 Pitch Push Rod Assembly (P/N 7200-098) so that the 6 pin connector is pointed downward and the assembly is centered on the rod end bearings.
  - (8) Use blue threadlocker (Loctite 242 or equivalent) and torque the jam nuts to 20-25 in-lb. Verify that both rod ends can move freely throughout full stabilator travel.
- xvi) Install Microfit 6 Position Cable 1M (P/N 6000-063)
- (1) Connect the Microfit 6 Position Cable 1M (P/N 6000-063) to the mating connector of on the pitch servo.
  - (2) 177RG only – Drill a 1-1/16” hole in the lower portion of the former cover and install a MS-34589-20 grommet. Position this hole to allow cable routing as shown in Figure 3-14. Route the Microfit 6 Position Cable 1M (P/N 6000-063) through this hole.



**Figure 3-14**



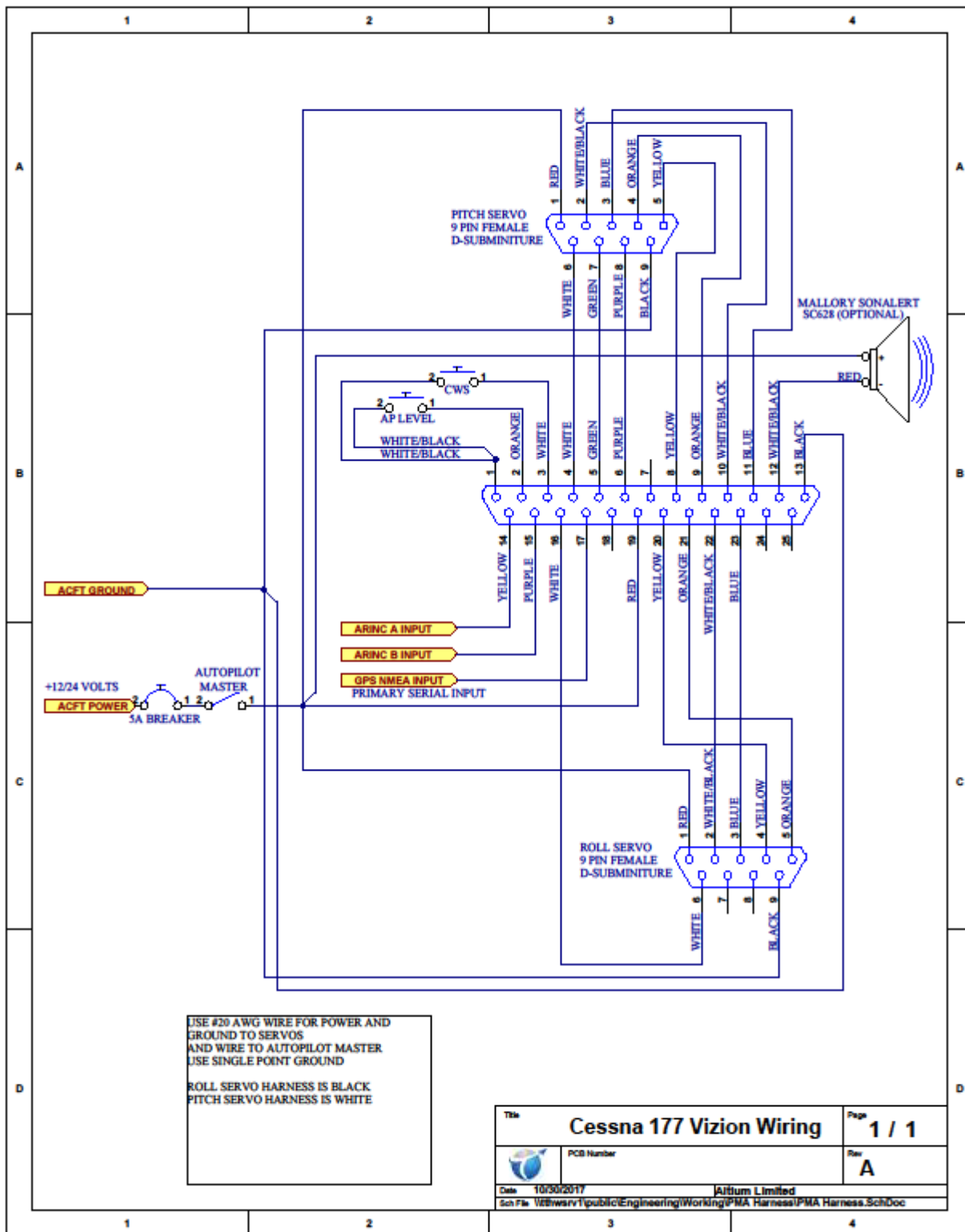
- (3) Connect Microfit 6 Position Cable 1M (P/N 6000-063) to the mating connector of on the pitch servo.
  - (4) Drill a hole in the area of the former shown in Figure 3-14 to secure the Microfit 6 Position Cable 1M (P/N 6000-063) with a MS3367-1-0 cable tie.
  - (5) Ensure that Microfit cable cannot interfere with movement of the Cessna 177 Pitch Push Rod Assembly (P/N 7200-098) or the stabilator counterbalance throughout full deflection of the pitch controls.
  - (6) Secure excess Microfit cable to servo wiring harness using a MS3367-1-0 cable tie.
- xvii) Reinstall Inspection Covers, Tailcone, and bulkhead aft of the baggage compartment.

## 4) Cessna 177 Wiring Harness Installation

### a) Wiring Harness Materials List

| Qty.      | Description  | Trutrak P/N                            |
|-----------|--|--|
| 2         | Connector Backshell 9 Pin  | 2100-010                               |
| 2         | Connector D-sub Female 9 Pin Crimp   | 2100-044                               |
| 16        | Female Socket Crimp Connector Pin  | 2100-045                               |
| As Needed | MS3367-1-0   |  |
| 6         | MS22529/2-2R Grommet Edging  |  |
| 1         | Vizion Emergency Level Button  | 8200-113                               |
| 1         | Vizion Wiring Harness 25'  | 8220-033                               |
| 1         | Vizion Limitations Placard   | 8300-092                               |
| 1         | 5A AP Circuit Breaker  | N/A                                    |
| 1         | Control Wheel Steering Switch (Must be Red)  | N/A                                    |
| 1         | AP Master Switch   | N/A                                    |
| 4         | 6-32 x 3/8" Instrument Mounting Screws   | N/A                                    |
| 1         | Vizion 2" Controller OR<br>Vizion 3" Controller OR<br>Vizion Flat Pack Controller                  | 8000-174 OR<br>8000-176 OR<br>8000-175 |
| N/A       | 1/8"-27 NPT male fittings and tees for connecting the A/P pitot and static to the aircraft systems | N/A                                    |
| N/A       | Various terminals and pins for connection of power and GPS   | N/A                                    |

### b) C177 Wiring Harness Diagram



**c) Wiring Harness Mounting Instructions**

- i) Select a mounting location for the A/P controller (The controller will not be installed, but mounting location should be considered for wiring harness placement). Consider the overall mounting depth of the controller with pitot, static, and electrical connections and allow clearance where necessary, especially surrounding the moving yoke assembly.
- ii) Remove the left panel overlay and the left instrument panel.
- iii) Remove the left front seat and the rear seat
- iv) Remove Interior Trim
  - (1) Remove interior trim from the right forward door pillar.



**Figure 4-1**

(2) Remove interior trim from above the right door.



**Figure 4-2**

(3) Remove interior trim from the left and right kick panels.



**Figure 4-3**





**Figure 4-4**

(4) Remove interior baggage compartment trim allowing full access to the rear of the fuselage.



**Figure 4-5**

- v) Open inspection covers for installation of wiring harness.  
(1) Open right wing inspection covers as shown in Figure 4-6.



**Figure 4-6**



(2) Open cabin floor inspection covers as shown in Figure 4-7.



**Figure 4-7**

- vi) Routing of Cessna 177 Vizion Wiring Harness (P/N 8220-032)
  - (1) Route the pitch and roll servo harnesses down the left side of the center stack leaving plenty of service loop for selected autopilot controller mounting location.
    - (a) Secure harness to existing wiring bundle using MS3367-1-0 Cable Ties.
  - (2) Continue running the pitch servo (white sheathing) portion of Cessna 177 Vizion Wiring Harness, (P/N 8220-032) across the lower left side of the instrument panel following existing wire routing.
    - (a) Secure harness using MS3367-1-0 Cable Ties.
  - (3) Continue running the pitch servo portion of Cessna 177 Vizion Wiring Harness, (P/N 8220-032) down the left side of the fuselage behind the kick panel.
    - (a) Secure harness using MS3367-1-0 Cable Ties.



**Figure 4-8**

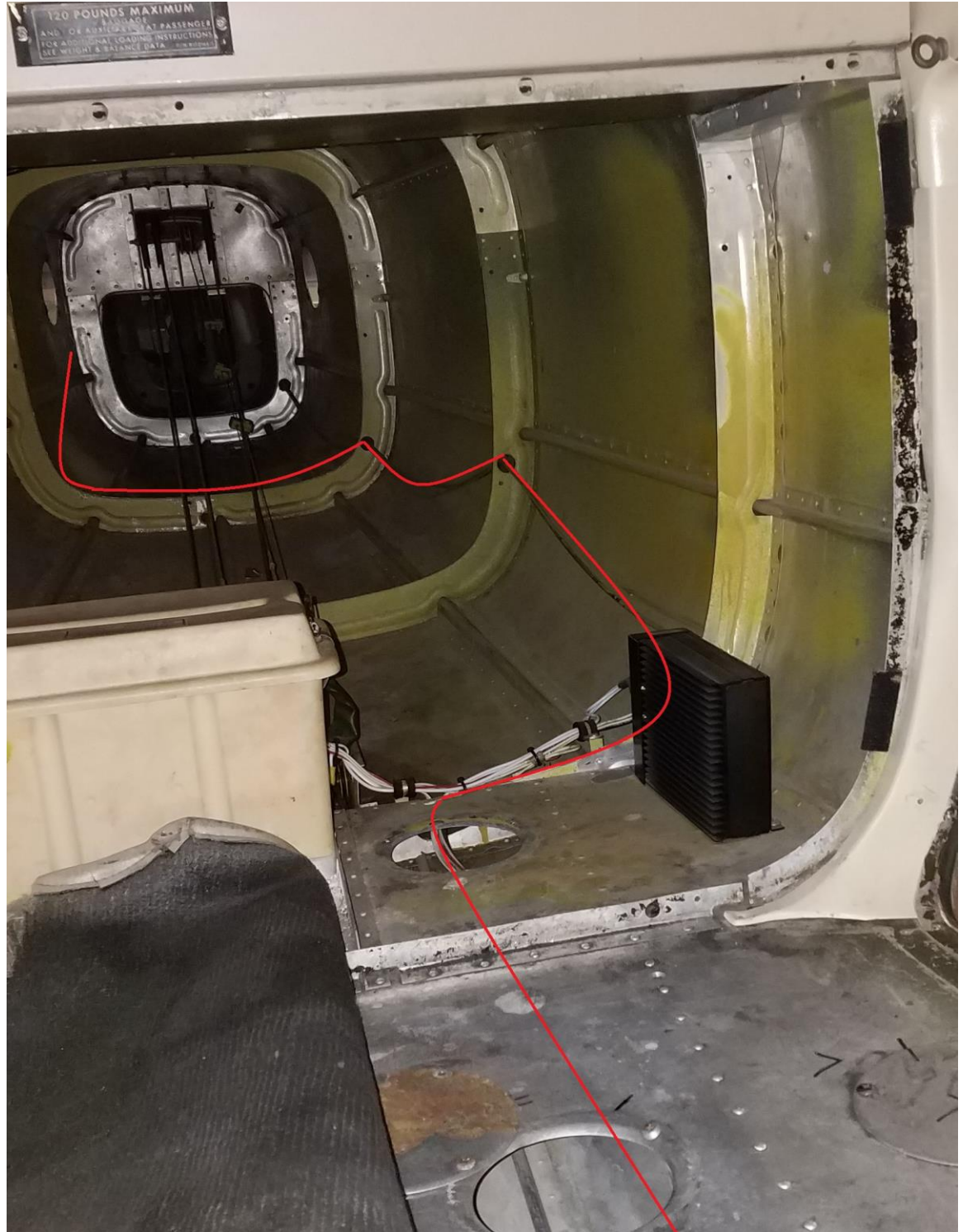
(4) Continue running the pitch servo portion of Cessna 177 Vizion Wiring Harness, (P/N 8220-032) under the cabin floor to the baggage compartment area.

(a) Secure harness using MS3367-1-0 Cable Ties.



**Figure 4-9**

(5) Continue running the pitch servo portion of Cessna 177 Vizion Wiring Harness, (P/N 8220-032) thru existing grommets in the left side of the rear fuselage.



**Figure 4-10**

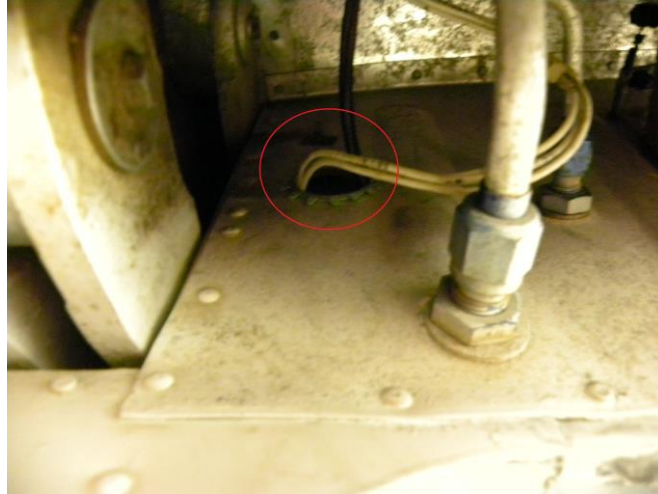


- (6) Route the harness to the right side of the rear fuselage. Secure the harness to the former at station 238.00 using a MS3367-1-0 cable tie as shown in Figure 4-11.



**Figure 4-11**

- (7) During the pitch servo installation the wires will be trimmed and terminated according to the C177 Wiring Harness Diagram.
- (8) Route the roll servo (black sheathing) portion of Cessna 177 Vizion Wiring Harness, (P/N 8220-032) under the center stack and follow the existing wire bundle to the right side of the panel. Secure harness to existing wiring bundle using MS3367-1-0 Cable Ties.
- (9) Locate the conduit that runs up the right forward door pillar and route the roll servo portion of Cessna 177 Vizion Wiring Harness, (P/N 8220-032) through this conduit to the area above the right door.
- (10) Install M22529/2-2R grommet edging to the hole shown in Figure 4-12. This is located above the right door just forward of the spar. Route the harness through this hole.



**Figure 4-12**

- (11) Continue running the roll servo portion of Cessna 177 Vizion Wiring Harness, (P/N 8220-032) into the right wing route through the grommet shown in Figure 4-13.



**Figure 4-13**

- (12) Route the roll servo portion of Cessna 177 Vizion Wiring Harness, (P/N 8220-032) through the right wing following the existing wiring bundle.
- (a) Secure harness using MS3367-1-0 Cable Ties.



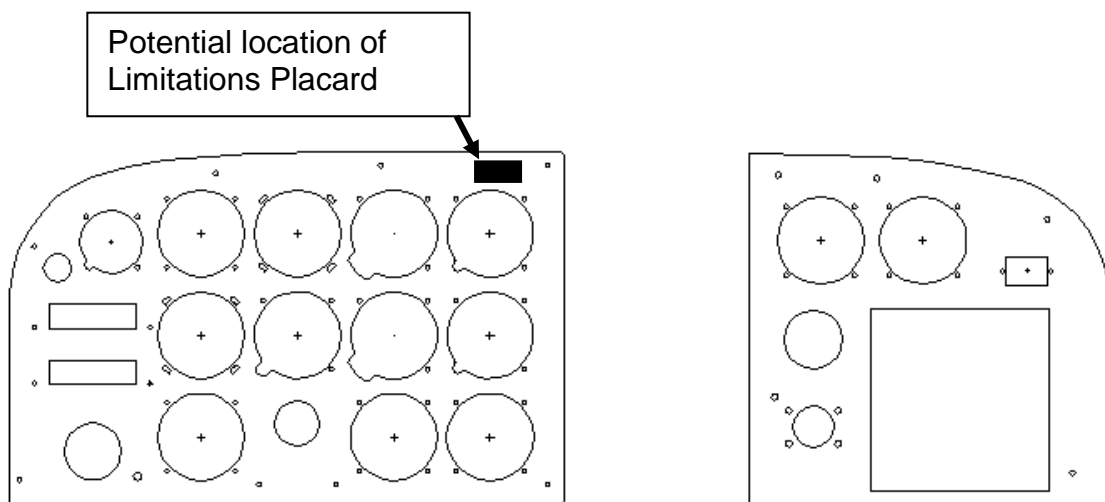
**Figure 4-14**

- (13) Route the roll servo portion of Cessna 177 Vizion Wiring Harness, (P/N 8220-032) through the grommet located at the inboard corner of the roll servo mounting location.



**Figure 4-15**

- (14) During the roll servo installation the wires will be trimmed and terminated according to the C177 Wiring Harness Diagram.
- vii) Complete the Wiring Harness Mounting Instructions once the pitch and roll servo installations are complete.
  - viii) Reinstall cover plates on inspection holes.
  - ix) Select appropriate mounting locations for the AP Master, AP Circuit Breaker, Emergency Level and control wheel steering switches. Connect these items per the C177 Wiring Harness Diagram.
  - x) **All items in step ix are required to be installed. The AP Master Switch, AP Circuit Breaker, and Control Wheel Steering switches must be labeled. The Control Wheel Steering Switch must be red.**
  - xi) Connect GPS inputs per the Vizion wiring diagram in C177 Wiring Harness Diagram.
  - xii) **Conduct pitot / static check of aircraft system before opening any pitot/ static connections!**
  - xiii) Mount autopilot controller in panel using 4 6-32 X 3/8" screws. Connect wiring harness and connect pitot and static per Vizion PMA Installation Guide (TruTrak Doc. 166).
  - xiv) Install Vizion Limitations Placard (Trutrak P/N 8300-092) near the Vizion autopilot. A sample panel with potential placard location is shown below:





- xv) Reinstall interior trim.
- xvi) Reinstall seats.
- xvii) Reinstall the instrument panel and panel overlay.
- xviii) Reconnect battery.
- xix) Once autopilot settings are confirmed, perform autopilot system test per the Vizion PMA Installation Guide (TruTrak Doc. 166).



## 5) Cessna 177 Autopilot Settings

Once all wiring is complete, verified, and the GPS setup has been completed (Vizion PMA Installation Guide (TruTrak Doc. 166)), follow the steps below to verify proper autopilot settings.

# THIS STEP MUST BE COMPLETED PRIOR TO GROUND CHECK AND FLIGHT CHECK!!!

### a) Lateral Autopilot Settings

- 1) PRESS and HOLD KNOB
- 2) Apply power to autopilot and GPS
- 3) Release KNOB.
- 4) PRESS KNOB to advance to min backlight
- 5) PRESS KNOB to advance to SETUP ENABLE.
- 6) ROTATE KNOB to select a value of **10**.
- 7) PRESS KNOB to exit.
- 8) PRESS and HOLD MODE button until LAT ACTIVITY is shown.
- 9) ROTATE KNOB to select a LAT ACTIVITY of **17**
- 10)PRESS ALT button to advance to next setup screen.
- 11)ROTATE KNOB to select a BAUD that matches the baud rate of the GPS (this will be either **4800** or **9600**).
- 12)PRESS ALT button to advance to next setup screen.
- 13)ROTATE KNOB to select a BANK ANGLE of **MED**.
- 14)PRESS ALT button to advance to next setup screen.
- 15)ROTATE KNOB to select a MICROACTIVITY of **15**.
- 16)PRESS ALT button to advance to next setup screen.
- 17)ROTATE KNOB to select a GPSS GAIN of **16**.
- 18)PRESS ALT button to advance to next setup screen.
- 19)ROTATE KNOB to set ROLL REV to **N**.
- 20)PRESS KNOB exit lateral setup and return to the home screen.
- 21)PRESS ALT AND HOLD alt button until VRT AVTIVITY is shown.
- 22)WHILE CONTINUING TO HOLD ALT, PRESS MODE.
- 23)RELEASE MODE AND ALT.
- 24)PRESS MODE until MAC is displayed.
- 25)ROTATE KNOB to set MAC to **1**.
- 26)PRESS KNOB to exit menu and return to home screen.
- 27)Do not remove power from autopilot.

### **b) Vertical Autopilot Settings**

- 1) PRESS and HOLD ALT button until VRT ACTIVITY is shown.
- 2) ROTATE KNOB to select a VRT ACTIVITY of **16**.
- 3) PRESS ALT button to advance to next setup screen.
- 4) ROTATE KNOB to select a MIN AIRSPD of (Refer to aircraft POH and set a value equal to 1.3  $V_s$  in knots).
- 5) PRESS ALT button to advance to next setup screen.
- 6) ROTATE KNOB to select a MAX AIRSPD of (Refer to aircraft POH and set a value equal to 0.9  $V_{NE}$  in knots).
- 7) PRESS ALT button to advance to next setup screen.
- 8) ROTATE KNOB to select a PITCH REV of **Y**.
- 9) PRESS ALT button to advance to next setup screen.
- 10) ROTATE KNOB to select a STATIC LAG of **0**.
- 11) PRESS ALT button to advance to next setup screen.
- 12) ROTATE KNOB to select a MICROACTIVITY of **10**.
- 13) PRESS ALT button to advance to next setup screen.
- 14) ROTATE KNOB to select a HALF STEP of **N**.
- 15) PRESS KNOB exit vertical setup and return to the home screen.
- 16) Cycle power on the autopilot.



TruTrak Flight Systems, Inc.