

# COVID-19 information

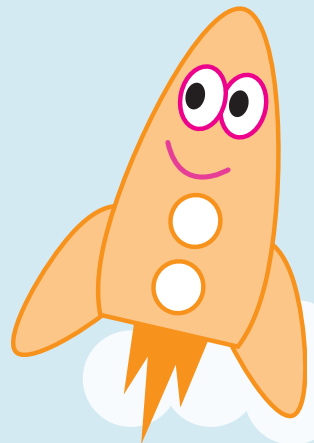
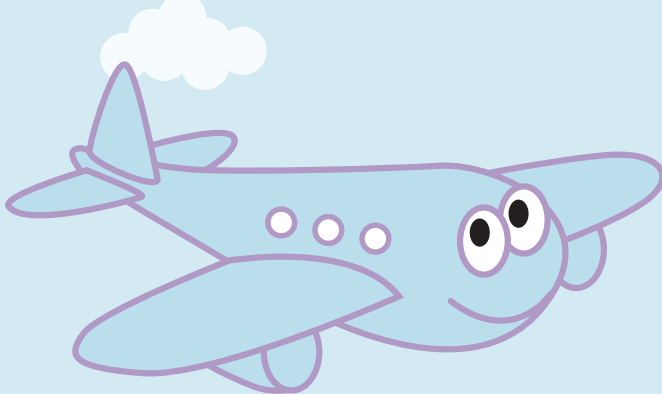
We understand that you might be anxious about sending your child to a childcare provider, so we have prepared this factsheet using Government guidance. You can read the full guidance here [www.gov.uk/government/publications/closure-of-educational-settings-information-for-parents-and-carers](https://www.gov.uk/government/publications/closure-of-educational-settings-information-for-parents-and-carers)

Childcare providers have been busy planning how to keep your child safe using these Government guidelines. For now, childcare will look very different and providers may need to adjust their routines as they go along to ensure continued safety. To meet the guidance, providers may offer childcare in smaller groups so that children and staff are not mixing with too many people.

Providers have been asked, when places are limited, to offer places to vulnerable children, children of key workers and funded 2, 3 and 4 year olds first.

Please contact your local childcare provider to understand about any changes that might impact on you individually.

If you have any questions you can email us at [fis@derby.gov.uk](mailto:fis@derby.gov.uk)



Derby City Council

## **How will childcare providers manage risks to children, staff and families?**

- by carrying out a risk assessment.
- making sure that children do not attend if they or a member of their household has symptoms of coronavirus.
- promoting regular hand washing and cleaning more frequently.
- minimising contact through smaller group sizes and altering the environment as much as possible.
- reducing mixing between groups through routine changes, such as staggered outside play or by introducing staggered drop-off and collection times.
- limiting the amount of contact between different groups of children such as smaller groups with children and staff spread out more.

## **If your childcare provider remains closed or is full, can you get childcare somewhere else?**

Yes - please contact the Families Information Service by emailing [fis@derby.gov.uk](mailto:fis@derby.gov.uk)

## **Can you transfer your Early Years Entitlement funding (for 2, 3 and 4 year olds) to another childcare provider?**

Sometimes - parents needing to move their child should email [fis@derby.gov.uk](mailto:fis@derby.gov.uk) as this is reviewed case by case depending on why a provider cannot offer a place.

## **Do children have to attend early year's provision?**

No - but Government strongly encourages early years children and priority groups to attend, as it help with children's learning and their school readiness. However some children might need to self-isolate or there are other reasons for absence (such as shielding due to health conditions). This is a family decision and has to be right for your family.

## **Funded places**

Don't forget to apply for your funded 2 year old place now by going online and completing your application: <https://remote.derby.gov.uk/Synergy/Parents/default.aspx>

You might also need to revalidate your 30 hours eligibility code, especially if you think your employment status might be about to change. If you do this now and your code is issued by HMRC you should still be able to use this in the next term even if your employment status changes.