

EXPERIENCED PROJECT PROFESSIONALS

DELIVERING COMPLEX SYSTEM INTEGRATION, BUSINESS CONSOLIDATION, AND APPLICATION DEVELOPMENT INITIATIVES SINCE 2003



A DIFFERENT KIND OF COMPANY

NICO SERV HAS PROVIDED DIRECT SERVICE SUPPORT TO A VARIETY OF CUSTOMERS INCLUDING **RBC WEALTH MANAGEMENT, 3M, AMERIPRISE, AND DORSEY AND WHITNEY**. WE ALSO WELCOME THE OPPORTUNITY TO COLLABORATE WITH OTHER SERVICE PROVIDERS TO DELIVER THE RIGHT MIX OF SKILLS FOR OUR COLLECTIVE END CUSTOMERS. WE HAVE ALSO JOINED FORCES WITH COMPANIES SUCH AS TEKSYSTEMS, POPULUS GROUP, TECHDIGITAL, AND GENESES I0 TO DELIVER LARGE SCALE PROJECTS TO END CUSTOMERS.

CUSTOMER SERVICE FOCUS OUR MODEL ENABLES US TO ENGAGE WITH OUR CLIENTS THROUGH THEIR PREFERRED SERVICE PROVIDERS OR DIRECTLY. WE FOCUS ON BEING FLEXIBLE AND EASY TO WORK WITH WHILE PROVIDING IMPECCABLE DELIVERY. WE HAVE BEEN PROVIDING CONTINUOUS SERVICE TO OUR FIRST CUSTOMER FROM INCEPTION OF THE COMPANY TO THE CURRENT DATE.

NICO SERV PARTNERS WITH CLIENTS AND OTHER SERVICE PROVIDERS TO

STAFF BUSINESS AND TECHNOLOGY INITIATIVES THAT DELIVER ON TIME, WITHIN BUDGET, AND AT THE ANTICIPATED BUSINESS VALUE.

NICO SERV IS AN EXPERIENCED CONSULTING PROVIDER THAT HAS BEEN DELIVERING THE HIGHEST LEVEL OF SERVICE SUPPORT TO TWIN CITIES BASED CLIENTS SINCE 2003. WE SPECIALIZE IN PROVIDING PROVEN EXPERTS IN PROJECT MANAGEMENT, BUSINESS ANALYSIS, PROCESS CONSULTING, AND TECHNICAL DELIVERY.

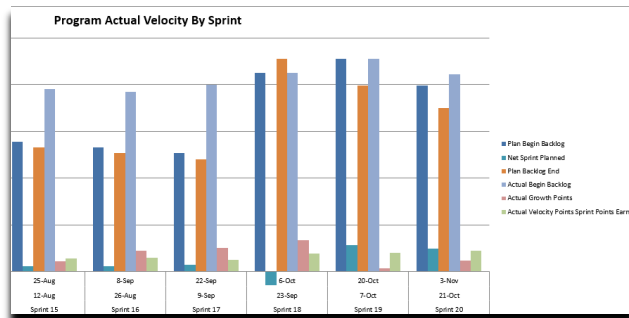
WE PROVIDE PROFESSIONALS WHO IMMEDIATELY BRING VALUE TO THEIR TEAMS. THESE PROFESSIONALS HAVE THE EDUCATION, EXPERIENCE AND CERTIFICATIONS NECESSARY TO DELIVER VALUE IMMEDIATELY.

OUR CONSULTANTS ARE SUPPORTED BY PROCESSES, PROCEDURES, AND TEMPLATES TO FACILITATE AND TRACK DELIVERY. WE ARE ABLE TO QUICKLY ASSIMILATE INTO ANY ENVIRONMENT AND FINE TUNE OUR PROCESS AND PROCEDURES TO MATCH OUR CUSTOMERS METHODOLOGIES AND PRACTICES, WHETHER WATERFALL, AGILE, OR INDUSTRY SPECIFIC PROPRIETARY MODELS.

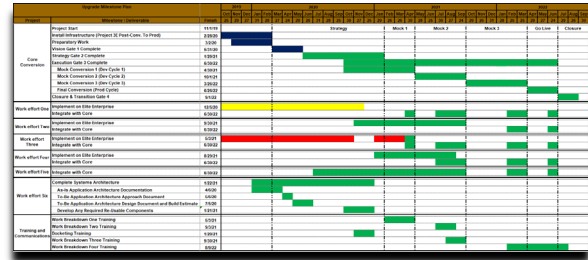
NICO SERV IS CURRENTLY EXPANDING OUR OPERATIONS IN THE TWIN CITIES TO SUPPORT OUR GROWING CLIENT BASE AND HAVE RECENTLY ADDED RECRUITERS AND ACCOUNT SUPPORT TO ENSURE OUR CONTINUED SUCCESS.

SCOPE, SCHEDULE, AND COST OF PROJECTS AND PROGRAMS. EXPERIENCE BUILDING PROJECT OFFICE SUPPORT AND MANAGING ALL ASPECTS OF PROJECT DELIVERY.

DETAILED TASK TRACKING UTILIZING INDUSTRY STANDARD TOOLS AND COMPANY TEMPLATES TO ENSURE COMPLEX TEAMS STAY ON TRACK.



HIGH LEVEL PLANNING EXPERTISE, USING WATERFALL AND AGILE METHODOLOGIES.

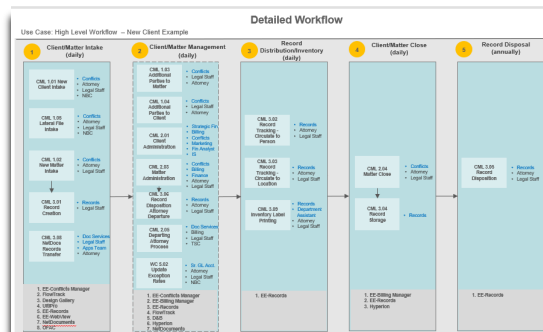


INTELLIGENT DASHBOARDS ENABLING
TRANSPARENCY FOR EXECUTIVES AND
STAKEHOLDERS.

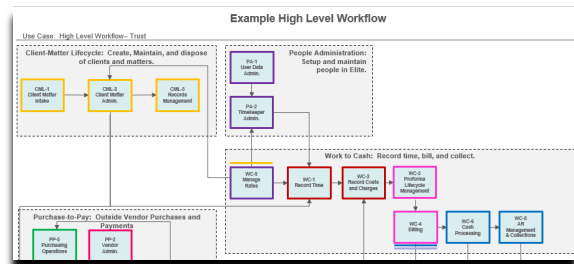
System ID	End State Product	Analysis Start	Analysis Complete	Infra-structure (VM/OS) Start	Infra-structure Complete	Configuration Start	Configuration Complete	Test Enterprise	Test Enterprise
1.1.1	SQL DB	9/14/2009	9/15/2009	9/14/2009	9/11/2009	9/14/2009	9/11/2009	9/14/2009	9/15/2009
1.1.2	Budgeting	9/14/2009	9/12/2009	9/12/2009	9/10/2009	9/10/2009	10/6/2009	10/6/2009	10/13/2009
1.2	Financial Reporting	9/14/2009	9/12/2009	9/12/2009	9/29/2009	9/10/2009	10/6/2009	10/6/2009	10/13/2009
1.2.3	Profitability Reporting	9/14/2009	9/12/2009	9/12/2009	9/29/2009	9/10/2009	10/6/2009	10/6/2009	10/13/2009
1.2.4	Analytics	9/14/2009	9/12/2009	9/12/2009	9/29/2009	9/10/2009	10/6/2009	10/6/2009	10/13/2009
1.2.5	Dashboard	9/14/2009	9/12/2009	9/12/2009	9/29/2009	9/10/2009	10/6/2009	10/6/2009	10/13/2009
1.10.4.2	NetCom	10/16/2009	11/2/2009	11/2/2009	11/10/2009	11/11/2009	11/11/2009	11/11/2009	11/18/2009
1.10.4.1	NetPlay	11/19/2009	11/19/2009	11/19/2009	11/17/2009	11/13/2009	11/14/2009	11/17/2009	11/18/2009
1.8	Dashboard	11/19/2009	11/19/2009	11/19/2009	11/17/2009	11/13/2009	11/14/2009	11/17/2009	11/18/2009
1.10.4.5	NetBoard	12/17/2009	12/18/2009	12/21/2009	12/28/2009	12/29/2009	12/30/2009	12/31/2009	1/4/2010
1.10.4.7	NetTime	12/21/2009	12/21/2009	12/23/2009	12/30/2009	12/31/2009	1/1/2010	1/4/2010	1/4/2010
1.10.5	SwiftCell	1/25/2010	1/26/2010	1/31/2010	1/27/2010	1/27/2010	1/27/2010	1/27/2010	1/27/2010
1.10.6	Interaction	1/30/2010	1/30/2010	1/30/2010	1/12/2010	1/12/2010	1/16/2010	1/13/2010	1/13/2010
1.10.4	Net	1/18/2010	1/18/2010	1/17/2010	1/14/2010	1/14/2010	1/16/2010	1/13/2010	1/15/2010
1.10.7	Response	1/11/2010	1/11/2010	1/13/2010	1/10/2010	1/13/2010	1/14/2010	1/12/2010	1/12/2010

BUSINESS ANALYSTS, PROCESS ENGINEERS AND SUBJECT MATTER EXPERTS DEFINE GOALS AND REQUIREMENTS TO ENSURE EXPECTED BUSINESS VALUE IS DELIVERED. EXPERIENCE WITH ALL ASPECTS OF PROCESS OPTIMIZATION AND REQUIREMENTS MANAGEMENT.

DEFINING OPTIMIZED PROCESS FLOWS FOR
VALUE DELIVERY EVALUATING OPTIMAL PROCESS
FLOWS IN CONJUNCTION WITH SUBJECT MATTER
EXPERTS AND BUSINESS PARTNERS



BREAKING COMPLEX REQUIREMENTS INTO SIMPLE COMPONENTS UTILIZING PROCESS FLOWS, DATA MAPS, USER STORIES AND REQUIREMENTS TO BREAK DOWN COMPLEX SYSTEMS.



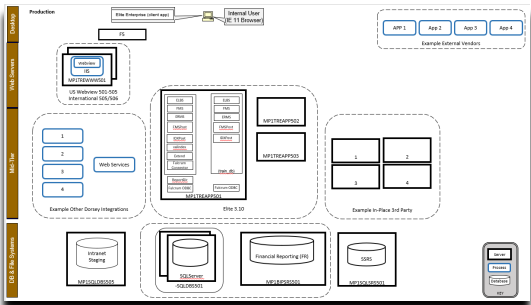
SUBJECT MATTER EXPERTS DELIVERING BUSINESS EXPERTS TO DEFINE PROCESSES AND TO BACKFILL KEY CLIENT BUSINESS NEEDS DURING SIGNIFICANT PROJECT EXECUTION.

TECHNICAL ARCHITECTS, TESTERS,
AND DEVELOPERS DELIVER DEVELOPMENT
AND TESTING EXPERTISE TO IMPLEMENT COMPLEX
SYSTEMS

TECHNOLOGY PLANNING AND DELIVERY
EXPERTISE USING WATERFALL AND AGILE
METHODOLOGIES TO DEFINE AND DELIVER
TECHNICAL COMPONENTS

Technical Components							
Scope	Project	Priority	Description	Requirements Complete	Design Complete	Development Complete	QA Complete
SA-1	Systems Architecture	High	AllWebServices	7/16/2020	8/14/2020	8/19/2020	10/13/2020
SA-1	Systems Architecture	High	Utils	7/16/2020	8/15/2020	8/14/2020	10/16/2020
SA-1	Systems Architecture	High	System Data	7/17/2020	8/18/2020	8/15/2020	10/15/2020
SA-1	Systems Architecture	High	System Action	7/18/2020	8/17/2020	8/16/2020	10/18/2020
SA-1	Systems Architecture	High	FinancialAnalysis	7/18/2020	8/18/2020	8/17/2020	10/17/2020
SA-1	Systems Architecture	High	CommData	7/20/2020	8/19/2020	8/18/2020	10/18/2020
SA-1	Systems Architecture	High	DocumentAction	7/21/2020	8/20/2020	8/19/2020	10/19/2020
SA-1	Systems Architecture	High	DocumentACL	7/22/2020	8/21/2020	8/20/2020	10/20/2020
SA-1	Systems Architecture	High	SharepointData	7/23/2020	8/22/2020	8/21/2020	10/21/2020
SA-1	Systems Architecture	High	WorkflowData	7/24/2020	8/23/2020	8/22/2020	10/22/2020
SA-1	Systems Architecture	High	WorkflowAction	8/24/2020	9/24/2020	9/23/2020	10/23/2020
SA-1	Systems Architecture	High	ClientBilling	7/26/2020	8/26/2020	8/25/2020	10/24/2020
SA-1	Systems Architecture	High	MarginComments	7/27/2020	8/26/2020	8/25/2020	10/25/2020

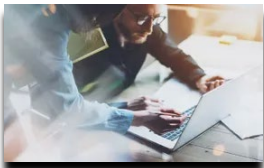
ARCHITECTURE ROADMAPS AND DELIVERABLES
DESIGNING TECHNICAL ARCHITECTURE TO MEET
BUSINESS REQUIREMENTS UTILIZING TECHNICAL
ARCHITECTS, TECHNICAL LEADS, AND DATABASE
SPECIALISTS



TEST ENGINEERS CREATE AND EXECUTE MANUAL
AND AUTOMATED TESTS ON INDUSTRY STANDARD
TOOLS FOR UI VALIDATION AND PROCESS TESTS.
DELIVER TEST PLANS, TEST CASES, TRACEABILITY
MATRICES, AND MANAGE PROCESS END TO END.

REPRESENTATIVE EFFORTS WE HAVE PARTNERED TO DELIVER INCLUDE:

LED THE TECHNICAL IMPLEMENTATION TO COMBINE THE EQUITY TRADING PLATFORMS OF TWO MAJOR
FUND MANAGEMENT COMPANIES ONTO A SINGLE PLATFORM. PROVIDED, PROJECT
MANAGERS, FINANCIAL CONTROL ANALYST, BUSINESS ANALYSTS AND TECHNICAL
RESOURCES TO PREPARE THE SYSTEMS AND BUSINESS PROCESSES FOR BUSINESS ON ONE
PLATFORM.



LED THE DESIGN AND DEVELOPMENT OF AN INTEGRATED FINANCIAL
PLATFORM TO SUPPORT TWO BROKER DEALER FIRMS THAT WERE COMBINING ON A SINGLE SITE. COMPLETED
BUSINESS ANALYSIS, TECHNICAL DESIGN, TESTING AND IMPLEMENTATION OR THE
COMBINED PLATFORM.

LED THE MAINTENANCE AND ENHANCEMENT OF SIX MAJOR RELEASES TO A
CLIENT FACING WEBSITES FOR A LARGE RETAIL BROKERAGE FIRM. PROVIDED
PROJECT MANAGEMENT, ANALYSIS AND TECHNICAL RESOURCES TO SUCCESSFULLY
ROLL OUT THE CONTRACTED RELEASES.



SUPPLIED TEAM OF PROJECT MANAGERS, BUSINESS ANALYSTS AND TECHNICAL RESOURCES TO UPGRADE THE
FINANCIAL SYSTEMS AND OVER 60 APPLICATIONS FOR A GLOBAL LEGAL
ORGANIZATION.

