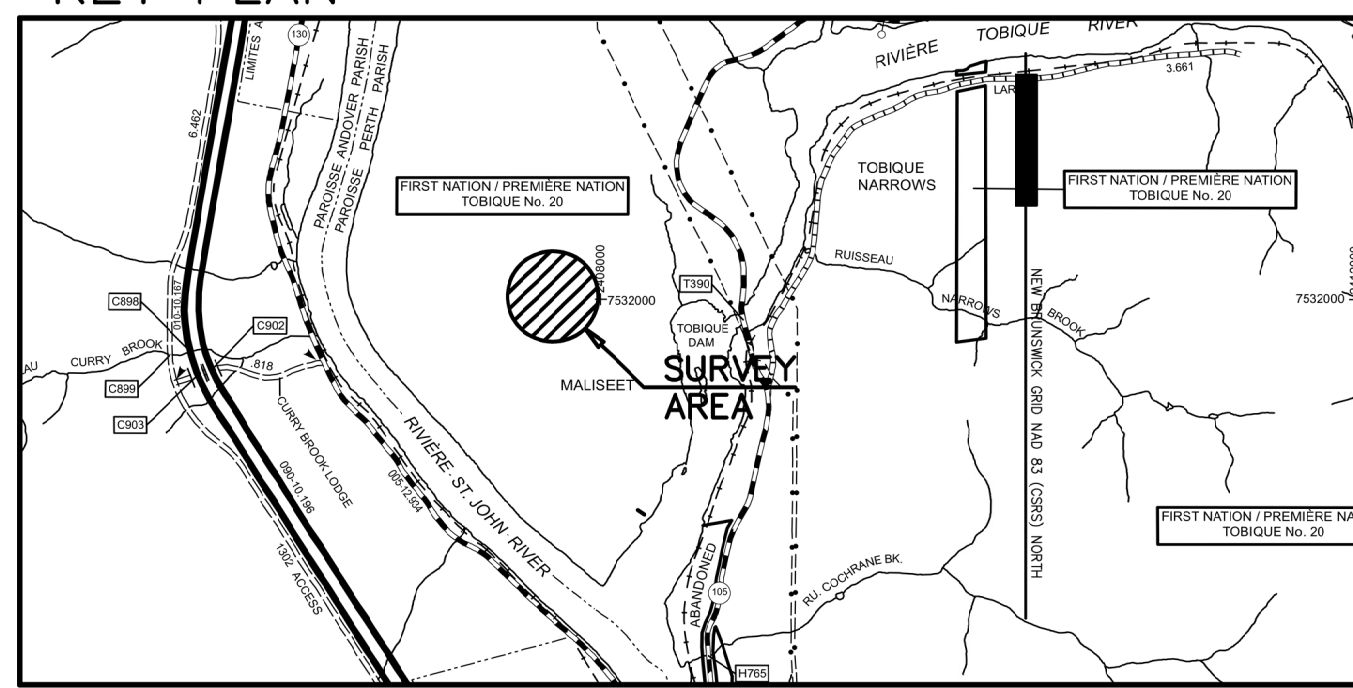
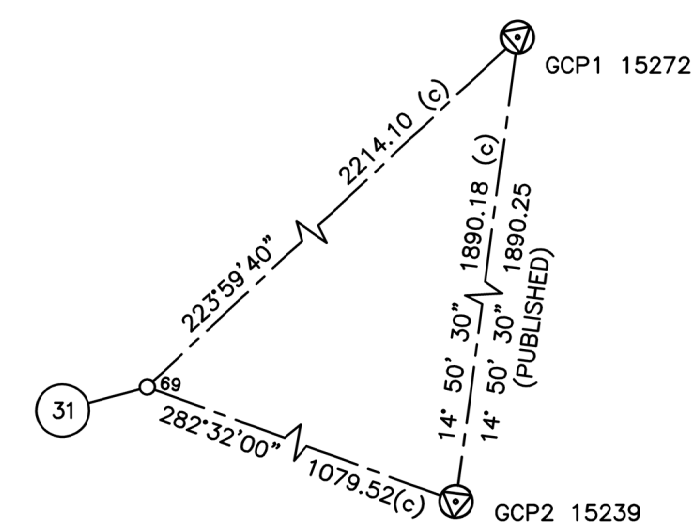


KEY PLAN



DESIGNATED HIGHWAYS -- MAP 223 SCALE: 1:40000

SKETCH SHOWING MONUMENTS USED FOR REAL-TIME GPS OBSERVATIONS



NOT TO SCALE

GEO-REFERENCED CONTROL POINTS (GCP) COORDINATE TABLE				
NEW BRUNSWICK GRID NAD83 (CSRS), EPOCH (1997.0)				
STATION	EASTING	NORTHING	COMBINED SCALE FACTOR	ESTIMATED ABSOLUTE ACCURACY
GCP2-15239 HELD FIXED	2408837.48	7531687.35	0.999 969	0.02
GCP1-15272 ADJUSTED VALUES	2409321.61	7533514.42	0.999 969	0.03

COORDINATES FOR STATIONS GCP1-15272 AND GCP2-15239 ARE NEW BRUNSWICK DOUBLE STEREOGRAPHIC PROJECTION VALUES ON THE NAD83 CSRS DATUM, EPOCH (1997.0) DERIVED FROM THE SERVICE NEW BRUNSWICK CONTROL SURVEY SYSTEM. GCP1-15272 WAS OBSERVED WITH A LEICA VIVA REAL-TIME GPS AND THE ADJUSTED VALUES WERE CALCULATED USING THE LEICA GEO-OFFICE SOFTWARE.

**PLAN OF SURVEY OF
LOTS 325, 326, 327 (ROAD) AND RIGHT-OF-WAY
(UTILITY EASEMENT) R4 OVER LOT 325
TOBIQUE INDIAN RESERVE No. 20**

PARISH OF PERTH
COUNTY OF VICTORIA
PROVINCE OF NEW BRUNSWICK

SCALE: 1:1000

THE PLOT SIZE THAT WILL PROVIDE TRUE SCALE AND OPTIMUM READABILITY FOR THIS PLAN IS 990MM BY 590MM.

THIS SURVEY WAS EXECUTED DURING THE PERIOD OF MARCH 06, 2020 TO APRIL 27, 2021 BY WAYNE E. HODGES, C.L.S., N.B.L.S.

COORDINATE TABLE

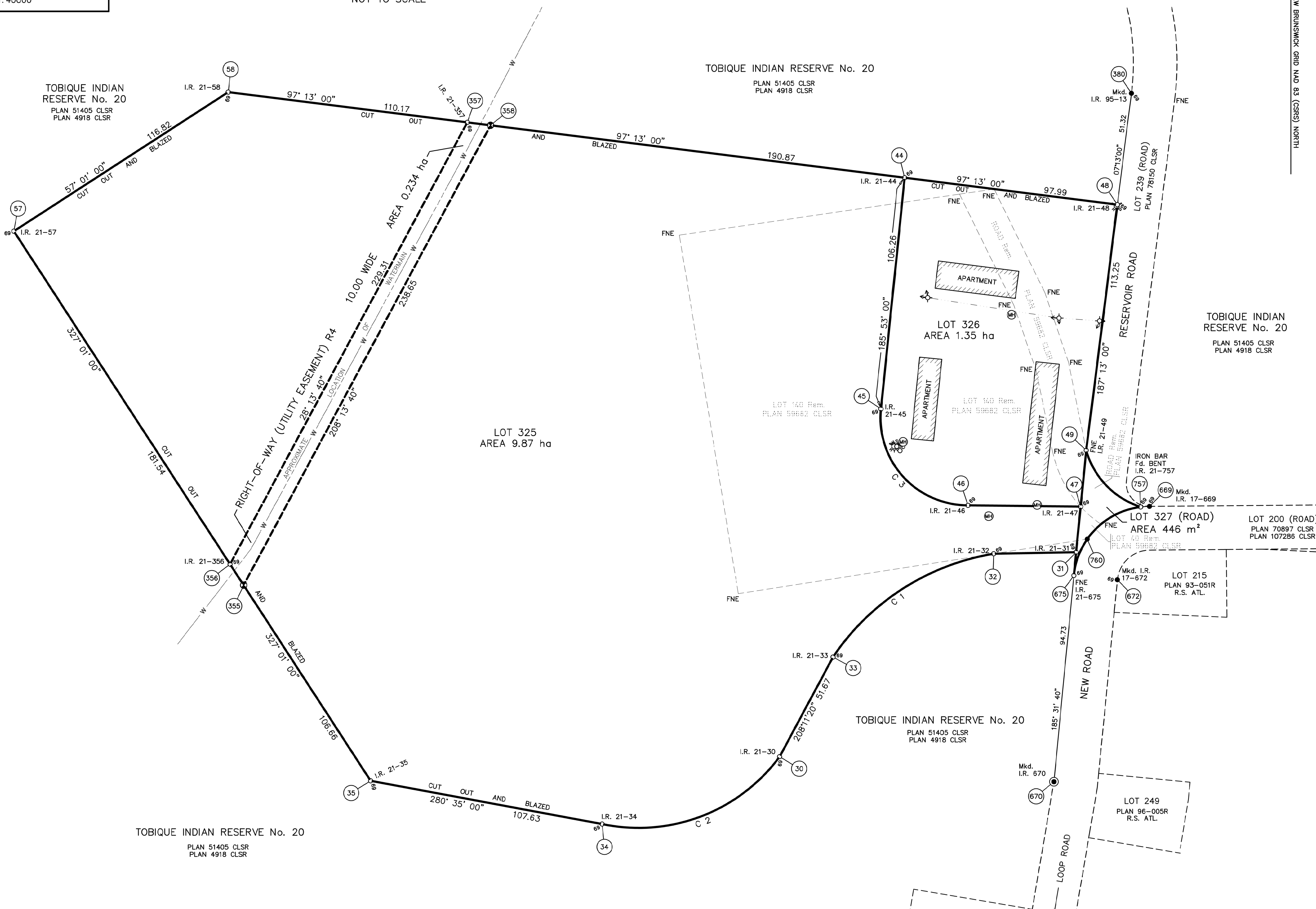
NEW BRUNSWICK GRID NAD83 (CSRS) , EPOCH (1997.0)		
POINTS	EASTING	NORTHING
30	2407848.15	7531828.12
31	2407783.71	7531921.59
32	2407745.97	7531920.89
33	2407872.55	7531873.66
34	2407566.96	7531797.30
35	2407461.16	7531817.07
44	2407705.32	7532092.82
45	2407894.43	7531987.12
46	2407734.28	7531943.02
47	2407785.77	7531942.45
48	2407802.53	7532080.51
49	2407788.30	7531968.16
57	2407298.06	7532068.38
58	2407396.05	7532131.97
355	2407403.10	7531906.53
356	2407396.89	7531916.10
357	2407505.34	7532118.14
358	2407515.97	7532116.79
380	2407808.97	7532131.42
669	2407817.21	7531942.55
670	2407773.53	7531816.64
672	2407802.56	7531909.00
675	2407782.66	7531910.92
757	2407813.21	7531942.29
760	2407788.80	7531927.59

LINE TABLE

LINE	AZIMUTH	DISTANCE
31 TO 32	268°55'50"	37.75
355 TO 356	327°01'00"	11.41
357 TO 358	97°13'00"	10.71
46 TO 47	90°38'00"	51.49
47 TO 31	185°38'00"	20.96
49 TO 47	185°38'00"	25.84
757 TO 760		C 4
760 TO 675		C 5
675 TO 31	05°38'00"	10.72
49 TO 757		C 6
757 TO 669		C 7
675 TO 672	95°31'40"	20.00

CURVE TABLE

CURVE	RADIUS	CHORD DISTANCE	CHORD AZIMUTH	ARC DISTANCE
C 1	110.00	87.30	237°14'50"	89.76
C 2	80.00	86.84	249°12'40"	91.79
C 3	40.00	59.44	137°53'50"	67.00
C 4	35.00	28.50	238°56'30"	29.35
C 5	35.00	17.76	200°13'20"	17.96
C 6	37.79	35.91	136°05'40"	37.42
C 7	35.00	4.01	86°15'00"	4.01



LEGEND:

DIRECTIONS ARE NEW BRUNSWICK GRID NAD83 (CSRS), EPOCH (1997.0) AZIMUTHS DERIVED FROM GPS OBSERVATIONS BETWEEN NEW BRUNSWICK GRID MONUMENT No. 15239 AND 15272.

COORDINATES ARE REFERENCED TO THE NEW BRUNSWICK STEREOGRAPHIC DOUBLE PROJECTION AND THE NAD83 (CSRS), EPOCH (1997.0) REFERENCE SYSTEM USING GPS OBSERVATIONS AND HOLDING CONTROL MONUMENT No. 15239 FIXED.

COORDINATES SHOWN ON THIS PLAN DERIVED FROM DIFFERENTIAL GPS OBSERVATION COLLECTED WITH LEICA VIVA, DUAL FREQUENCY RECEIVERS, USING REAL-TIME GPS TECHNIQUES.

AZIMUTHS ARE ROUNDED TO THE NEAREST 10 SECONDS.

DISTANCES ARE ROUNDED TO THE NEAREST 0.01 METRE.

DISTANCES ARE IN METRES AND DECIMALS THEREOF.

MONUMENTS PLACED ARE MARKED WITH CANADA LANDS SURVEYS, A UNIQUE IDENTIFICATION NUMBER AS SHOWN (e.g. I.R. 21-1), THE SURVEYORS' COMMISSION NUMBER (1370) AND THE YEAR OF THE SURVEY (2021).

ALL AZIMUTHS AND DISTANCES SHOWN ON THIS PLAN ARE DERIVED FROM GPS OBSERVATIONS UNLESS NOTED OTHERWISE.

DISTANCES SHOWN ARE GROUND HORIZONTAL, WITH NO ADJUSTMENTS MADE. GRID DISTANCES CAN BE COMPUTED BY MULTIPLYING THE GROUND DISTANCES BY AN AVERAGE COMBINED SCALE FACTOR OF 0.999 969.

ALL MONUMENTS PLACED WERE REFERENCED WITH A RED WOODEN STAKE PLACED NEXT TO THE MONUMENT.

LOT 325, LOT 326 AND LOT 327 (ROAD) DEALT WITH BY THIS PLAN REPLACES LOT 140 Rem. AND ROAD Rem. DEALT WITH BY PLAN 59682 CLSR.

LANDS DEALT WITH BY THIS PLAN BOUNDED THUS	
CLS 69 POST FOUND	
CLS 69 POST PLACED	
CALCULATED COORDINATE POINT	
COORDINATE REFERENCE NUMBER	
APARTMENT BUILDING	
HYDRANT	
WATER SHUTOFF	
SANITARY MANHOLE	
APPROXIMATE LOCATION OF WATERMAIN	
RIGHT-OF-WAY DEALT WITH BY THIS PLAN BOUNDED THUS	
GUY WIRE	
UTILITY POLE	
UTILITY LINE	
IRON BAR FOUND	
PROVINCIAL STANDARD SURVEY MARKER FOUND	

RE: SECTION 38, CANADA LANDS SURVEYORS REGULATIONS

CERTIFIED CORRECT

PROJECT: 202124001
FILE: SM8204-06025
CHECKLIST: 8492

REVIEWED: _____
PLAN NO. 4154-1
PLAN DATE: 2021/08/03

A SURVEY REPORT FOR THIS SURVEY HAS BEEN RECORDED UNDER FIELD BOOK NUMBER FB43540 CLSR.

W.E. HODGES SURVEYS LTD.

SURVEYING & CONSULTING ENGINEERING SERVICES

REGISTERED WITH ANBLS, ACLS, & APEGNB

71 DAVIS MILL ROAD PHONE 553-6612
DSL DRUMMOND, NB FAX 553-6448
E3Y TP3 EMAIL wehodges@nb.cibn.com

