

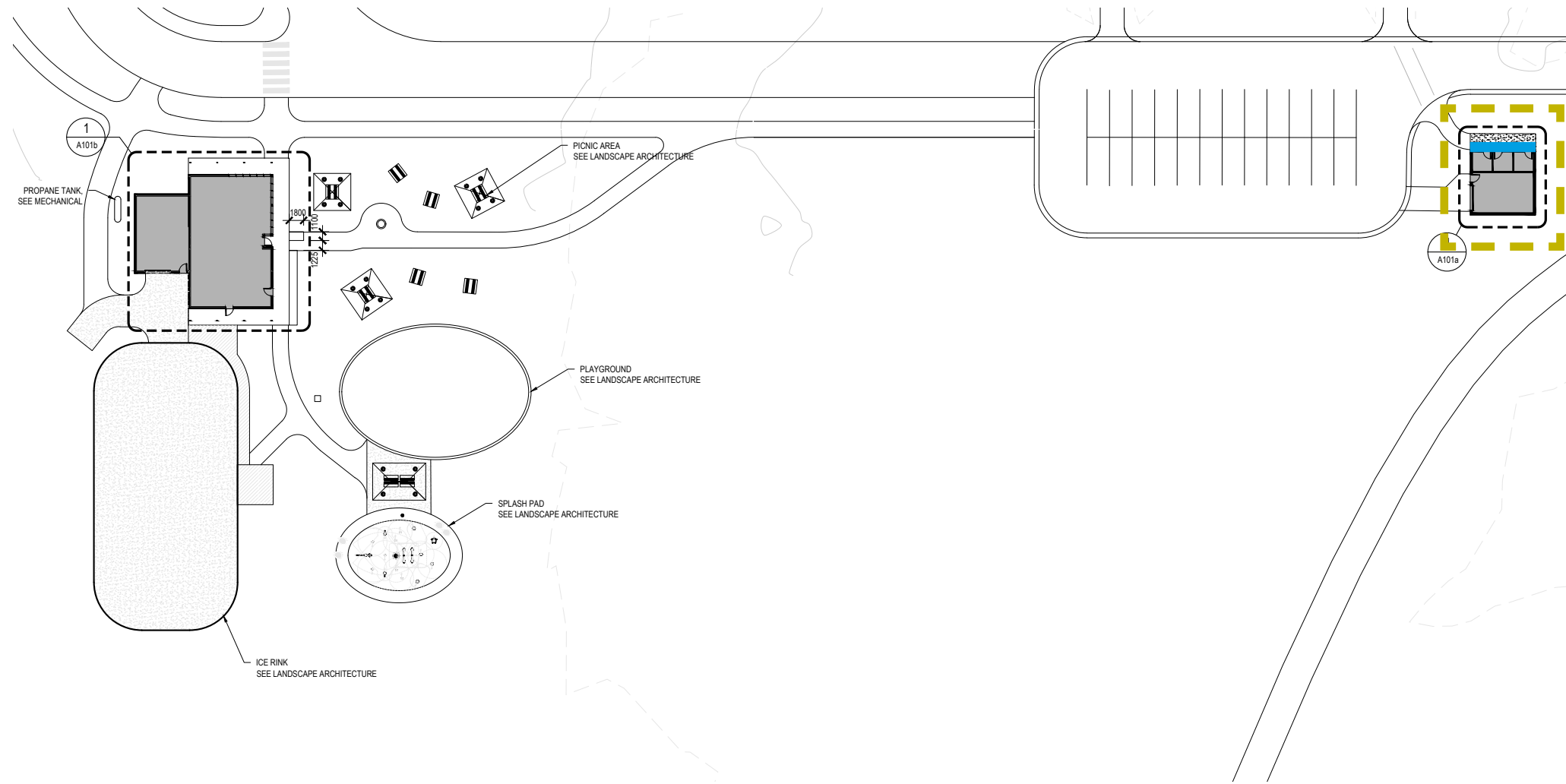
**BRIEF:**

As part of the new Neqotkuk Kciw Knicanenwek Sports and Recreation Park project in Tobique First Nation NB, **artists are invited to submit a proposal for a 2D artwork on the northern exterior facade of the future service building at the main entrance of the park.**

The artist must produce a mural or drawing inspired by local cultural elements or traditional motifs important to the community.



The artwork can be painted directly on the building or on another surface that will then be installed on the building's facade. The exterior cladding is vertical wood planks.

The architect will assist the chosen artist to digitize the drawings submitted and enlarge them to the size required so it fits on the area.



Site plan

**LEGEND:**

-  The artwork will be on the Service Building
-  The artwork will be on this facade of the Service Building

EVOQ ARCHITECTURE  
BDA LANDSCAPE ARCHITECTS  
ROY CONSULTANTS  
RED ISLAND CONTRACTORS

**CALL FOR**  
**ARTIST**  
**PROPOSALS**

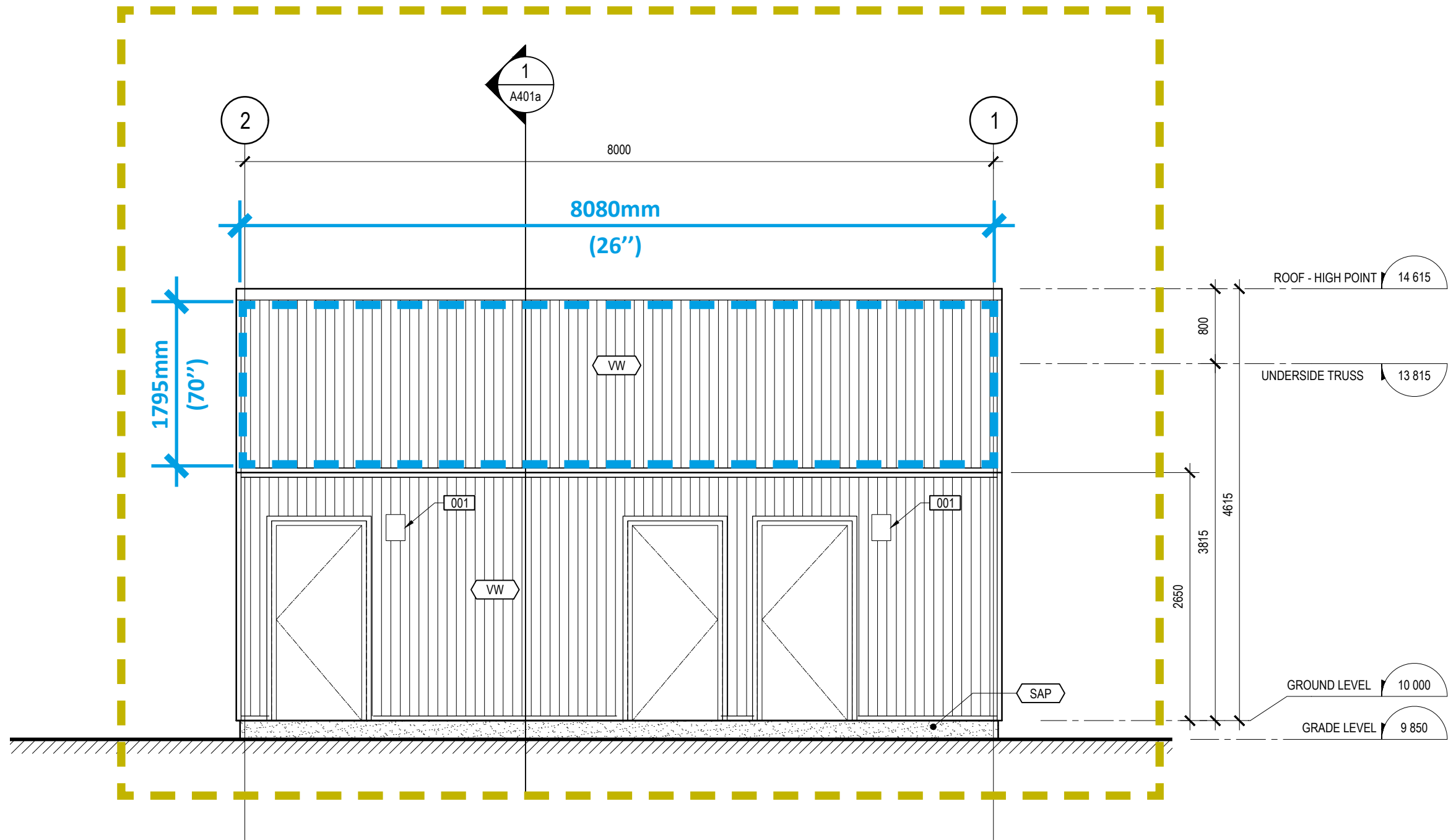
**NEQOTKUK KCIW**  
**KNICANEWEK**  
**SPORTS AND**  
**RECREATION PARK -**  
**PHASE 2**

PROJECT NO.: 9223-18-00

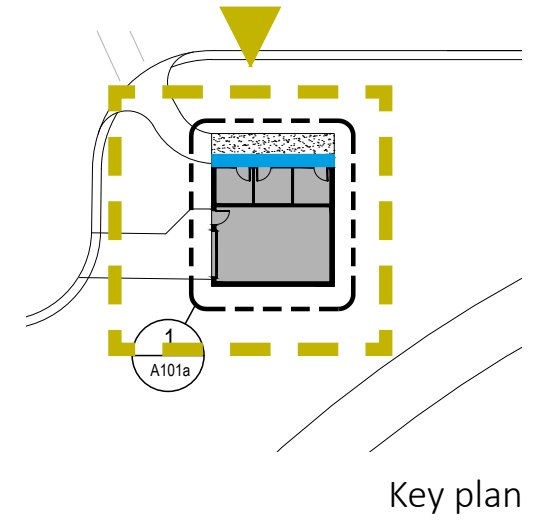
ISSUE DATE: JULY 14, 2021

# ELEVATION

## SERVICE BUILDING



### NORTH ELEVATION



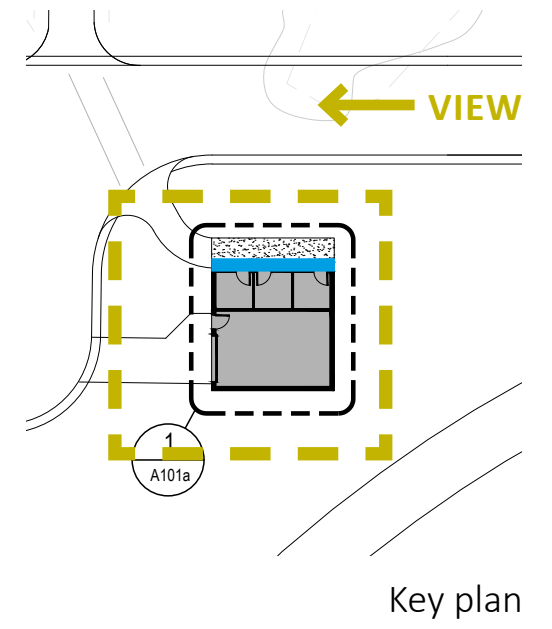
North elevation / Scale: 1:50

### LEGEND:

Artwork area

# ENTRANCE VIEW

SERVICE BUILDING



Key plan

Entrance view

## LEGEND:

■ ■ ■ Artwork area

# ARTWORK AREA TEMPLATE TO DRAW ON

