



MISSISSIPPI VALLEY QUILTERS GUILD

Established 1983

May 2025

P. O. Box 2636, Davenport, Iowa 52809-2636

President's Message By Dawn Thompson

Spring is here!!! The flowers are blooming and the trees are budding. The landscaping is getting its color back. No more gray and brown. We need color in our lives. It changes our attitudes. We are more energetic, happy and thankful with more spring in our step. Our Guild is a colorful and diverse community that gets a lot accomplished. I encourage everyone to not just come to the meetings but to get involved as much as you can. Take a class, make a doll quilt or two, make a charity quilt, join the board or another committee. We can't exist without the many volunteers that make the wheels turn in our organization. I promise you that you won't be disappointed!!! See if you can change your color and attitude by joining into the excitement.

Janette absolutely fell in love with quilting

at the age of 18 in 1984.

She fashions herself not an expert but as "fabric manipulated". She owned a quilt shop in Geneseo Illinois from 1999-2005.

Upon closing her shop, she

took the appraisal classes in Paducah, KY to be a quilt appraiser in 2008.

Collecting quilts is a passion of Janette's.

She continues to be dangerously passionate about all things quilting.



Janette Dwyer

❖ **Get Away Quilters**
April 2-3.. 845am - 730pm
Butterworth Education Ctr.
701 - 12th Ave, Moline

❖ **Guild Meeting**
May 6..... 1pm & 7pm
1st Congregational Church
2201 7th Ave, Moline

❖ **Quilts of Valor**
May 7.....9am - 2pm
Heritage Church
4801-44th St, Rock Island

❖ **Charity Quilters**
May 8.....9am - 3pm
Deere Wiman Carriage House
817 - 11th Ave, Moline

❖ **Quilt Queens Breakfast**
May 8..... 9am
Village Inn, 53rd & Elmore
** All are welcome. RSVP
Judy Nelson, 563-271-7140

❖ **Scott County Sit & Sew**
May 12.....9am - 3pm
Scott County Library
200 N. 6th, Eldridge

❖ **Board Meeting**
May 13.....6 - 830pm
Deere Wiman Carriage House
817 - 11th Ave, Moline

❖ **Fiber Arts**
May 13.....9am - 3pm
Eastern Ave Library
6000 Eastern, Davenport

❖ **Quilt Queens Sit & Sew**
May 15.....9am - 3pm
Eastern Ave Library
6000 Eastern, Davenport

❖ **Farm Fiber Fun**
May 15 - 20..... 9am - 8pm
23510 130th Ave. Eldridge

❖ **Quilts of Valor**
May 18..... 1230 & 230
2025 Award Ceremony
Davenport Masonic Center
511 Veterans Memorial
Pkwy, Davenport

❖ **Fairmount Sit & Sew**
May 16.....9am - 3pm
See you at Farm Fiber Fun
23510 130th Ave. Eldridge

❖ **Virtual Sit & Sew**
May 19..... 1 - 4pm
Karla Miley, 309-738-5227

❖ **Doll Quilts**
May 20.....830am - 2pm
Deere Wiman Carriage House
817 - 11th Ave, Moline

❖ **Quilt Queens Sit & Sew**
May 22.....9am - 3pm
Eastern Ave Library
6000 Eastern, Davenport



❖ **Pin Pals Sit & Sew**
May 27.....830am - 3pm
Deere Wiman Carriage House
817 - 11th Ave, Moline

❖ **Program Committee Mtg**
May 28..... 9 - 1130 am
Orchid Rm, Butterworth Home
1105 - 8th St, Moline

❖ **Quilt Queens Sit & Sew**
May 299am - 3pm
Eastern Ave Library
6000 Eastern, Davenport

❖ **Skill Builder Workshop**
Mary Newcomb
May 31.....9am - Noon
Butterworth Education Ctr.
701 - 12th Ave, Moline

COMMITTEE CHAIRS:

Charitable Projects	
Carol Downey	309-236-3886
Community Education	
Diana Engelbrecht	563-370-4239
Doll Quilts	
Margaret Paulos	563-323-5745
Deb Schladt	309-786-4387
Doohickey Drawing	
Afternoon:	
Mary Beth Hansen	563-381-2495
Evening:	
Linda Lindy	309-235-5355
FYI Board	
Afternoon:	
Maureen Conrad	563-940-5921
Evening:	
Julie Gray	309-781-1975
Garage Sale	
Claudia Duyvejonck	309-738-3745
Guild Challenge	
Jo Noon	563-271-0318
Hostess/Greeter	
Sandy Bender	309-781-8525
Habitat for Humanity	
Deb Schladt	309-786-4387
Historical Interest	
Catherine Litwinow	563-332-8588
Library	
Cindy Anderson	309-798-4473
Theresa Ralfs	563-370-3940
Paula Schumann	563-209-1451
National Quilt Day	
René Robinson	309-738-3266
Quilt Show Chair	
Peggy Fierst	507-513-3936
Retreat	
Mary Pement	309-797-6367
Pam King	309-737-9634
Skill Builder Workshops	
Julia Warner	563-321-7572
Show & Tell	
Lois Kundel	563-370-0086
Travel	
Cathy Bennett	563-340-4479
Guild Related Quilts of Valor	
Terry Austin	309-912-1063

NOTE - Committee Chairs: If you have a schedule change, inform VP - Deb Schladt prior to the next month newsletter.

Please do not contact facilities directly

BOARD MEMBERS:

President, Dawn Thompson	563.349.1853
Vice President, Deb Schladt	309.781.9749
Secretary, Kathee Secor	309.781.7886
Treasurer, Sharon Milne	563.210.0027
Program, Diana Engelbrecht	563.370.4239
Newsletter, Denise Greer	309.269.0940
Historian, Carol Burrus	941.441.6720
Membership/Directory, DeLaine Lanman	563.343.3224
Member at Large, Kathy Higgins	563.650.3828
Member at Large, Nancy Duvall	563.449.6015
Webmaster, Shelly Moore	563.343.8461

The Mississippi Valley Quilters Guild is a non-profit organization open to anyone interested in quilts or quilting. Monthly meetings are 1 p.m. and 7 p.m. on the first Tuesday of each month at the First Congregational Church 2201 7th Ave, Moline, IL. Guests are welcome. A \$5 fee is charged to guests at meetings with featured speakers.

\$35 yearly dues are renewable in September.

To change your address contact
DeLaine Lanman 563-343-3224.

Find us on line at: www.mvqg.org

www.facebook.com/mvqguild

MVQG Email: mvqg@mvqg.org

Newsletter submissions:

Contributions to the Newsletter are welcome. Articles and ads are due no later than the second Friday of each month and can be submitted to Denise Greer at...

newsletter@mvqg.org

All contributions must be accompanied by the name and phone number of the author.

Advertising rates

Prepay 5 issues and get the 6th issue free

* Business card \$5.00 * 1/4 page \$12.50

* 1/3 page \$15.00 * 1/2 page \$25.00

OUR MISSION:

Organized in 1983 to educate and encourage members in the quilting arts; to encourage high standards in color, design, and construction of the quilted medium, and to stimulate interest in quilting in the community.

April Meeting Statistics

Afternoon Meeting 90 - Members
1 - Guest 1 - New Members

Evening Meeting 40 - Members
0 - Guest 1 - New Members

NAME TAG WINNERS FOR APRIL

Afternoon meeting:

Marilyn Boen, Deanna Little, Margaret Paulos, Judy Nelson, Debbie Schladt, Dawn Thompson, Sheila Wildermuth.

Evening meeting:

Carol Downey, Diana Engelbrecht, Karen Evans, Donna Lanman.

DOOHICKEY DRAWING WINNER
for April was
Melody Sawvell

New officers, committee chairs and members are asked to check recurring information in the Newsletter such as the calendar and "Upcoming Member Opportunities" to assure that date, time, location, & other details are correct as listed.

Any changes for Butterworth Facilities should be submitted to...

Deb Schladt, Vice President,

stitching.turning@gmail.com • 309.781.9749

PROGRAMS

May 7

Janette Dwyer

1pm - Bargain Quilts

This program consists of about 30 quilts Janette has acquired at little to no cost. This includes 2 Century of Progress quilts from 1933 Chicago World's Fair.

7pm - The Grand Ladies of Quilting
...and One Gent

This program is about those innovative individuals that paved the way with quilting patterns as well as quilting styles we still enjoy today.

June 3 - 1 & 7pm

Linda Lambert

a certified Laura Heine instructor

Her programs will be

Collage Quilting and Your Health.

During this presentation you will learn about Laura Heine's process of collage quilting.

Quilting is **THERAPY!** Learning a new technique not only exercises your brain, but lowers blood pressure, helps fight depression.

June 4 - 9am-3:30pm

Pincushion Collage wall hanging. Learn Laura Heine's technique and process for collage quilting. Color, shading, values, and motifs will be demonstrated while you are creating. You should be able to have your design layout completed by the end of class. Suggestions on quilting and finishing your quilt will be shared in this class.

There is a maximum of 25. The kit will be \$30 + \$18 pattern due day of class. The \$35 class fee will be due when you sign up. This is a deal. The guild is covering an additional \$15 for each student.

July 1

Summer Celebration

1pm - Potluck all courses

7pm - Appetizers & Dessert Potluck

August 5 - 1 & 7pm Roxanne Lessa

August 6 - 9am - 3:30pm

Colorplay for Quilters

August 7 - 9am - 3:30pm

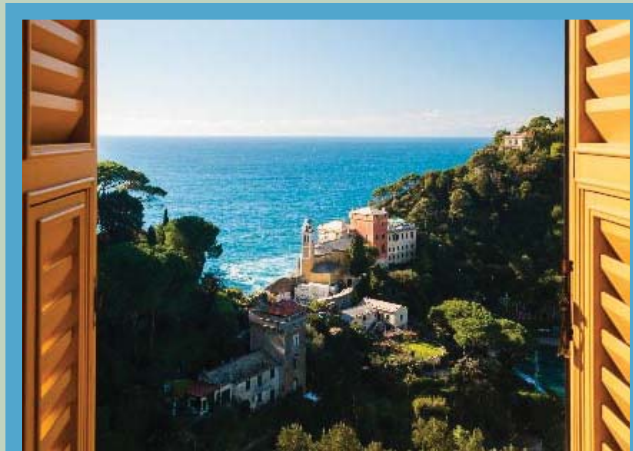
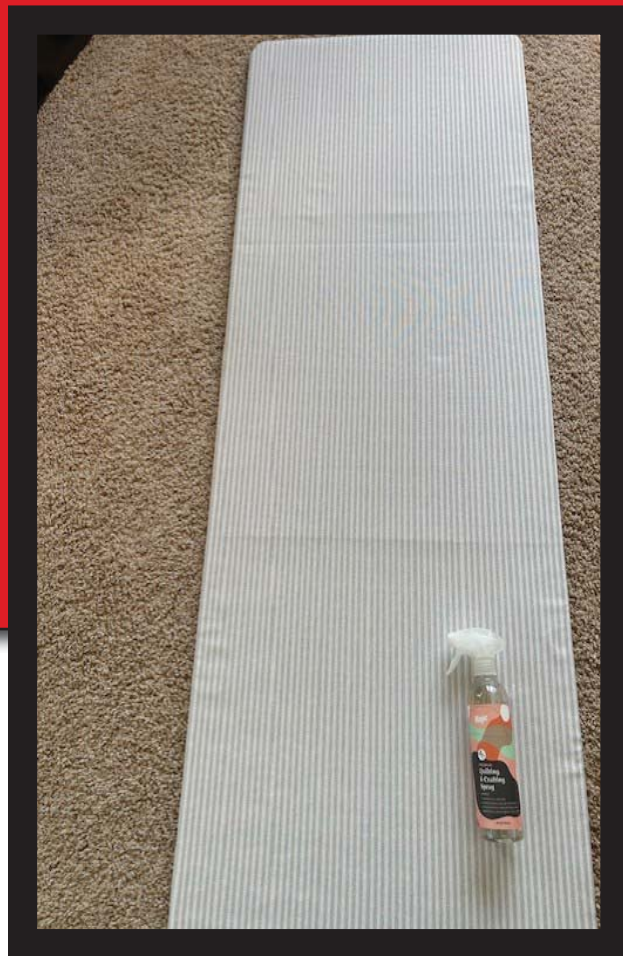
Fused Applique & Paint Workshop:

Morning Glory

MAY DOOHICKEY PRIZE

- Wooden ironing board cover
- Magic quilting and crafting spray.

The tickets are \$1.00 each.



2025 QUILT GUILD CHALLENGE

“THE VIEW FROM MY WINDOW”

- ◆ QUILTS MAY BE ANY SIZE UP TO 36 INCHES IN LENGTH AND WIDTH
 - ◆ ANY TECHNIQUE MAY BE USED
 - ◆ QUILTS WILL BE DISPLAYED AT THE SEPTEMBER 2025 GUILD MEETING.
 - ◆ COST IS \$1 PER QUILT
- PLEASE SIGN UP IN THE L OR CONTACT
JO NOON, CHALLENGE CHAIR.

Pound and Inch Fabric and Sewing Store

We buy fabric by the pound and sell it by the inch!

1316 4th Ave., Moline, IL 61265

www.poundandinch.com

309-428-8189

10% OFF for
GUILD MEMBERS

PFAFF

Perfection starts here.™ YOUR HOME FOR THE ORIGINAL IDT SYSTEM



Authorized PFAFF sales and service
Open Tues-Fri 11-2 and Sat 9-1 Closed Sun and Mon



L&P Collective Circle Login L&P Collective Webpage

about us

The **Longarmer & Piecer Collective** is a vibrant online community that provides access to quilt-industry related content and lessons and a space to connect with fellow quilt enthusiasts and professionals.

L&P Collective
Quilt  Stitching
— by Shelly —

qsbs-landp-collective.circle.so
shelly@landpcollective.com
shelly@quiltstitching.com

FIBER ARTS

The Fiber Arts group will meet Tuesday, May 13th at the Davenport Public Library Eastern Avenue Branch. Everyone is welcome. Inspire and create is scheduled from 9-3.

The May play day features Jane Darin teaching a machine appliqué technique from 930-1130. This is suitable for all levels. Further questions or to register for class, call or email me. Once registered a supply list will be given.

The formal meeting will begin at 1pm. Our program in May will be a presentation by one of our own "stars" who will share their creative processes with fiber as well as completed projects

Farm fiber fun is May 15th - 20th. Please check class list and examples to join in a great creative experience.

Colleen Curry cocu@csteldridge.com
563-285-1305 (land line)

CHARITY

Calling longarmers and quilt back preppers!! Please consider helping out the Charity committee with the work that needs to be done to complete the many beautiful quilt tops donated for charity from our Shop Our Stash event. It was fabulously successful, so now we need to pull together to finish them. If you're new to longarming, charity quilts are an opportunity to hone your skills. The baby and lap quilts can also be finished on domestic machines to practice free motion quilting. We have lots of fabric for backings, we just need people to prep them (measure/cut/sew). Please contact me or come to our monthly sew days (second Thursday of each month) if you would like to help out.

Carol Downey 309-236-3886

DOLL QUILTS

Especially for you who claim to love sewing small pieces. Plus so many kid friendly fabrics... I'll bring a bunch of boxes, dump them on the tables (so they can 'breathe' a bit), and inspire as you sort, for colors and themes!

So at April's workday, 4 people created at least a dozen kits, plus some still in the works. A new creator, Debbie Engel finished 4! VP, co chair Deb Schladt organized the kits (and had prepared a stack of backs...), Wendy Rios, regular steady quilt maker! We always welcome new ideas on assembling these colorful cozies for the Head Start kids...so come join the 'puzzle' work day....

As you say, you have your own...ok...then keep them coming from your own sewing time.... deadline, Nov, will have the count from the schools by Sept-Oct....

Need anything, call me...I may have stuff at home or we can get it from the shed.

Margaret Paulos, DQ Chair 563.323.5745 & Deb Schladt, DQ Co-Chair 309.786.4387

So. We don't have Joanns to browse, so come browse the selection at doll quilt workday... we have samples of practically everything!...

D'S STITCHING & TURNING
Longarm Quilting & Embroidery

309-786-4387 HOME
309-781-9749 CELL

DEBBIE SCHLADT
ROCK ISLAND, IL 61201



stitching.turning@gmail.com



Gigi's Quilting, LLC
Angie Tague

Long Arm Quilting ; 313 E Ives Street
gigisquilting.atague@gmail.com ; Long Grove, IA 52756
563-370-7748 ; Gigi's Quilting on Facebook

Upcoming Member Opportunities.

All are welcome!

Pin Pal Quilters

Faye Kunz 563-505-2579

Diana Engelbrecht 563-285-4348i

This group meets on the fourth Tuesday of each month from 830am to 3pm at the Butterworth Education Center, 701 12th Avenue, Moline. We work on our own projects so you must bring everything you will need. Any guild member is welcome. Bring your sewing machine or handwork. Beaders and others interested in embellishing with beads are welcome to come work on their projects during this time also. Large tables are available to baste and mark quilts.

Charity Quilts

Carol Downey 309-236-3886

Charity Quilts Day is held the second Thursday of the month, 9am to 3pm Deere-Wiman Carriage House, 817 11th Ave., Moline unless otherwise noted in the calendar.

Quilt Queens

Bev Hoy 563.391.8685

Judy Nelson 563-271-7140

This Sit-n-Sew group meets every third and fourth Thursday, 9am to 3pm, Eastern Avenue Library, 6000 Eastern Ave., Davenport.

Just bring your lunch and enjoy the day!

Join Quilt Queens for Breakfast on the second Thursday of each month. Meet at Village Inn, 53rd & Elmore, Davenport, IA. 9am. RSVP Contact Judy Nelson for your spot! Everyone is welcome.

Fairmount Library Sit-N-Sew

Diana Engelbrecht 563-370-4239

3000 N Fairmount Street, Davenport.

Please come and bring a friend.

On the third Friday of the month 9am to 3pm

Doll Quilts

Margaret Paulos 563-323-5745

Doll quilts are small quilts made by members and given to Head Start and selected preschool programs. Come to the workday, 3rd Tuesday most months at the Deere Wiman Carriage House, 817 11th Ave., Moline, 830am to 2pm, to plan, cut and sew with donated fabric, about 24" square. Bring whatever tools and machines you like to work with. Donations always welcome. Quilts are distributed by December guild meeting.

Quilt Get Away

Denise Greer 309-269-0940

If you have projects to finish - Quilt Getaway is the place for you and open to all guild members. We meet at Butterworth Education Ctr., 701 - 12th Ave, Moline unless otherwise noted, from 845 am to 7pm on the first Friday and Saturday of the month. Stay all day or leave your things and come and go as you like. Microwave and refrigerator are available. You may want to bring a light and an extension cord.

Please remember do not come before **845am**.

Quilts of Valor

Terry Austin 309-912-1063

Make quilts to honor our veterans. Quilts of Valor group meets on the Wednesday following the Guild meeting, 9am to 2pm, ***New Location Heritage Church, 4801-44th St. Rock Island.

Fiber Arts

Colleen Curry 563-285-1305

The Fiber Arts group meets on the second Tuesday, Eastern Ave. Library, 6000 Eastern Ave., Davenport Inspire and Create 9am to 3pm

Play Day 930am to 12pm

Fiber Arts Meeting 1pm to 3pm

The room will be open from 9am to 3pm for Inspire and Create time for anyone who would like to work on any non messy project of their choice. Play Days are various mini workshops to learn new techniques. Demos, information and show and tell from 1pm to 3pm. Any sewing machines will be asked to stop during the meeting. It will be an open creative time for all fiber mediums.

Virtual Sit-N-Sew

Jane Darin 309-523-3296

Karla Miley 309-738-5227

Held via Zoom every third Monday Contact Jane or Karla by 12 noon on the Sunday before.

Scott County Library Sit-N-Sew

Deb Daniels 563-349-7115

200 N 6th Ave., Eldridge.

Please come and bring a friend.

On the Second Friday of the month

9am to 3pm

**This date fluctuates due to the Libraries schedule.



Scott County Library Exhibit

If you are near Eldridge, stop in at the Scott County Library and check out our exhibit. It will hang until June 30.

The entrance exhibit table will be switched out with new things mid May.

The address is 200 N 6 St., Eldridge, IA.

Their hours are Mon.-Thu. 8am-8pm, Fri. 8am-4:30pm, Sat. 9am-4:30pm.

Thank You!

A big thank you to Gail Ethier, Mary Gehrls, Colleen & Stan Curry for the help setting up the Eldridge Exhibit. And to Mary's husband for coming to the rescue with the staple gun when mine quit working properly. What a gift of helping hands making the load lite!

Many thanks, Diana Engelbrecht

Skill Builder Workshops

Intro to Paper Piecing

Saturday, May 31 – 9 - noon – Cost \$10

Butterworth Education Center, 701 12th Ave, Moline

If you are new to paper piecing or need a refresher course, please join Mary Newcomb for a great class on the subject! More details, samples and sign up will be available at the May meeting.



New Ways to Bind and Edge your Quilt

Saturday, July 26 – 9 - 3:30 – Cost \$15 (plus \$5 kit fee)

Butterworth Education Center, 701 12th Ave, Moline

In this workshop, Colleen will show you how to bind and treat the edges of your quilt with various fabrics, yarns, net and tulle, zippers, laces, and many other fibers and fiber related items. Each person will receive a kit with items to be used in the class for \$5.00. After lunch, Colleen will have a small quilt show featuring some of her larger quilts that use techniques from the class.

Supply list, samples and sign up will be available at the May meeting.

Julia Warner, Skill Builder Workshop Chair 563-321-7572



Historical Interest

There was a comment at the afternoon meeting that needs a bit of tweaking. Kits were available years ago. Marie Webster, last month's quilter, had most of her quilts as kits. (Kits were available from 1914). Sometime just the tissue pattern but also printed on patterns. The top would have the appliqué pieces drawn on the top with numbers for what piece goes first. Fabric would have numbers to show what piece to stitch first. My favorite is the French Basket.



1930

One of the most prolific quilt designers is Ruby Short McKim

Ruby Short was born July 26, 1891 in Millersburg, IL. Her family encouraged her artistic talent from the beginning. Her first published art work appeared in her high school

year book. She taught all levels of school art in Independence, MO. While teaching she contributed to the "Kansas City Star" by designing many embroidered quilt patterns. After marrying Arthur McKim, high school sweetheart, she took a short break producing a son and daughter.

With art in her blood she went back to designing syndicating 10 series in popular newspapers and magazines. Two of those magazines being "Successful Farming" and "Better Homes and Garden."

Her patterns were published in the Sunday Newspapers. She did many series. She did both Red Work and Appliqué.



1932

Cathy Litwinow, Historical Interest

Great NEWS we will be having a 2025 GARAGE SALE!!

More details on location, time and date to come.

So if you have anything to donate, you can start bringing it to the guild meetings in preparation. Claudia Duyvejonck Garage Sale Chair 309-738-3745 Text / voice mail only. She will call you back.

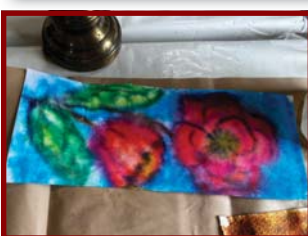
Come join us on the farm to do all things messy pertaining to fiber.

See pages 10 & 11 for schedule of workshops and information on how it works.

Guided Playtime activities that you can do all day every day.

The full document is on the membership page at mvqg.org.

As you can see, the barn is large enough to handle workshops and anyone who wants to dye, paint, spin, sew, or whatever your jam is, at the same time. We have soooo much fun. Come experience the joy. **Diana Engelbrecht 563-370-4239**



Farm Fiber Fun

May 15-20

Diana & Arlan Engelbrecht Farm

23510 130th Ave, Eldridge, IA 52748

Barn is open 9am-8pm

Schedule Of Workshops Offered

Do Your Own Thing All Day Every Day

Guided Playtimes All Day Every Day

Wednesday, 14th

Homeschool Workshops (see below)	9am-12pm	Various Teachers	page 7
----------------------------------	----------	------------------	--------

Thursday, 15th

Woven Christmas Ornament	1-4 pm	Tracy Welch	Page 3
--------------------------	--------	-------------	--------

Friday, 16th

Indigo Dying	9 am-12 pm	Sally Stewart	Page 3
--------------	------------	---------------	--------

Exploration of Fiber Paper Making	1-4 pm	Cyndy Simmons	Page 4
-----------------------------------	--------	---------------	--------

Marbling Fabric	4-7 pm	Diana Engelbrecht	Page 4
-----------------	--------	-------------------	--------

Saturday, 17th

Goodness Bowl	9 am-12 pm	Wendy Rios	Page 4
---------------	------------	------------	--------

Sunday, 18th

Coptic Bound Art Journal	9 am-12 pm	Rene Robinson	Page 5
--------------------------	------------	---------------	--------

Sashiko To Go	1-4 pm	Rene Robinson	Page 5
---------------	--------	---------------	--------

Juniors (all school age children) see below	12-4pm	Various Teachers	Page 7
---	--------	------------------	--------

Monday, 19th

Faux Felted Plant Friend	9 am-12 pm	Gail Ethier	Page 5
--------------------------	------------	-------------	--------

Lasagna Method of Fabric Painting	1-4 pm	Colleen Curry	Page 6
-----------------------------------	--------	---------------	--------

Tuesday, 20th

Garden Ornaments In Copper	9 am-12 pm	Gail Ethier	Page 6
----------------------------	------------	-------------	--------

Mystery Zipper Workshop	1-4	Diana Engelbrecht	Page 6
-------------------------	-----	-------------------	--------

Homeschooler: Thursday 9-12 and

Juniors: Sunday 12-4 Page 7

Sewn Coaster

T-shirt Bag

Embroidery

Paint a Banner

Dye your T-shirt or pillowcase

Sylvia Banes

Rene Robinson

Cyndy Simmons

Colleen Curry

Diana Engelbrecht

Cost for Workshops:

We have a suggested donation of at least \$10, more is always appreciated, to be dropped in the can provided for each workshop. All of the donation goes toward that teacher for her time to prepare for your workshop as well as her time that day and to help replenish any supplies, dyes, paints, or inks they may have shared with you outside of supply fees or kits. The suggested donation is above and beyond any kit/supply fees. There is also a can in the Guided Play areas for donation toward replenishing supplies for those stations. Please check out what the dyes, paints, and other items supplied to you cost. Leave enough money in the cans to help replenish the supplies for the amount you may have used. There is a donation can for the use of the building and toward electricity, also.

Kits or Supply Fees:

When a kit or supply fee is involved, there will still be a donation can for you to place your \$10 for the workshop in addition to the cost of the kit. Some workshops have a supply fee or kits available for purchase. The teacher must be notified by May 8 so the right number of kits or supplies can be available.

DEADLINE MAY 8: Please sign up for workshops with the teacher as some have a size limit, kit/supply fee, or bring from their stash to share and need time to prepare. Contact info for each teacher is in each workshop description.

Guided Playtime

Pages

<u>Shibori-esque and dyeing</u>	<u>Page 8</u>
<u>Ice Dyeing</u>	<u>Page 8</u>
<u>Gelli Plate Prints</u>	<u>Page 9</u>
<u>Alcohol Ink Donut Pendant, Tiles, Paper</u>	<u>Page 9</u>
<u>Tsukineko Inks</u>	<u>Page 9</u>
<u>Shivas Paint Sticks</u>	<u>Page 10</u>
<u>DynaFlo Paints</u>	<u>Page 10</u>
<u>Craft Paint Anything</u>	<u>Page 10</u>
<u>Paper</u>	<u>Page 10</u>
<u>Air Dry Clay</u>	<u>Page 10</u>

There is someone available at all times to guide you through these techniques.

You bring the fabric. The rest of the supplies are available to try the Guided Playtime activities.

Anything you want to try that you have at home and haven't had the courage to do. This is the place to do anything messy that you don't want to do in your home.

General Things to Bring For Guided Play or Play on your own

Clothing: dress in clothes you can get messy in and for the weather. We are in a barn.

Fabric, canvas or paper you want to use for dyeing or backgrounds in your experimentation. These are not provided.

Lunch and/or supper or can go to Eldridge or Northwest Blvd area or order pizza delivery.

Drink: pop, water, etc.

Snacks.... There will be a food/snacks table for sharing.

Drop Cords & multi plugins if using a sewing machine or other electrical appliance.

OPTIONAL:

Any paints, dyes, etc. you may have purchased and don't have the space or courage to play with them.

Chair if you have one you prefer. A folding chair is provided.

Lawn chair to enjoy the outdoors

Table light

Any questions please call Diana Engelbrecht at 563/370-4239 or email dipraisinhim@aol.com with FFF in subject line. Thank you.



QUILTS OF VALOR

Well I hope you all have survived this mild winter we had. Just a little snow and just a little cold but not bad.

QOVF's award ceremony is May 18th. At the Davenport Masonic Shriner Center.

Two award times 12:30 and 2:30 with a drive through option from 1:30 - 2:30.

We have 83 names on the list and all quilts are accounted for. You are all awesome. I even have a few extra that I like to have in case someone brings a relative that wants one. So a huge thank you to all!

This can't be done without all of your help.

If you have some of the 2025 QOV blocks that need to be turned in ...let me know and I'll make arrangements to get them from you.

Here are a few thank you's,

Terry, I just want to thank all of you who are involved with Quilts of Valor.

You are doing a very good job that is much appreciated by us veterans.

Thanks again, Dan W.

Terry, thanks so much for what you do. It was an honor to receive a quilt today. Please thank your family of workers also. Robert W.

Dear Terry, My husband and I would like to thank you and those on your team for recognizing our service with the beautiful quilts.

It is our honor to have the opportunity to serve and take care of our warriors (we are nurses) and we were deeply touched by the Quilt of Valor recognition.

Please continue this important mission wrapping our veterans in these beautiful quilts made with love.

I hope to one day be able to volunteer for a group like yours to carry on serving.

With gratitude and respect, Polly H. and Rob C.

This is why we do what we do!

Humbly grateful, Terry Austin 309-912-1063

PS Birdies for charities is here again. We have a new chair person that is heading it this year. She will be at Guild in May to bring forms and to talk about it.

Her name is Susan Moen, her phone number is 309-791-1079. Contributions to Birdies helps us meet our budget every year so think about helping us out.

Volunteer Spotlight

Diana, was born in Adel, IA. She has been married to her husband Arley for 50 years. She has three sons and thirteen grandchildren, ten boys and three girls, ages 8-25. She has lived on a dairy and hog farm for 40 years of her life. Her husband retired from livestock farming in 1995 when they sold their cows and turned to crop farming, field tiling and construction work with 2 of her sons and Arley's brother and nephew. Her various jobs on the farm included milking cows, taking care of the farrowing barn (mama and baby piglets), and mow and bale hay & straw. She worked periodically throughout her life as a florist, retiring from that in 2000.



Diana Engelbrecht

She also worked for six years as the secretary for the Methodist Church in Eldridge. Diana was youth leader at her church for 3 years. She has been a quilter for more than 40 years and was influenced by her aunt who appliquéd. She was advised by a good friend not to join any Guild. That friend got her interested in cross stitching, flower gardening and encouraged her interest in quilts. Some of Diana's other interests are tole painting, landscape paintings, and dying/painting/printing fabric. She loves being social with all her wide variety of friends. Her favorite quilting technique depends on the day and how quickly she can "get ur done."

She joined the Guild in 2010 and has been on and the Chair of the Program Committee 2 times. She has been the Workshop Chair, Vice-President, the President, Community Education Chair, Co-helper for Fiber Arts group and Coordinator for Farm Fiber Fun (for more than ten years), served as the Quilt Show judging chair and worked in the judging room since 2012. She has also chaired demos at the show and helped with one of the buildings for the retreat.

We so greatly appreciate all that she has done for the Guild. Thank you.

Denise Greer was born in Moline, IL and grew up in Hilo, Hawaii with her parents and sparkling sister, Lisa. Denise married her loving husband of 35 years, Jeff, and raised her only awesome son Garrett in East Moline. At the age of 29 being 6 months pregnant she conquered two emergency open heart surgeries and delivered a healthy baby boy. Jeff and Denise currently live in Rock Island.

Denise is retired after a fulfilling career in graphic design and photography.

She has worked in graphic design/printing and for the QC Times, The Dispatch, Midland Press, Bawden Printing/RR Donnelley.

Her photography started as a hobby and turned into a career with Photographic Arts and freelance projects with the Quad City International Airport, weddings and special events. Being an active member and secretary for the Quad City Photographic Club 8 years offered her opportunities to develop and explore her photography skills and techniques.

She became a member of the Guild in 2021 and has quilted for only 4 years. She became interested in quilting when she asked Beulah Spaulding to finish, hand quilting her mother's quilt. Beulah's enthusiasm was her inspiration.

Her favorite style of quilting is probably modern with a hint of custom. She loves working with batiks, they are usually nonconforming like her.

Her other interests are camping, kayaking, traveling & CREATIVE SEWING.

EVERYDAY SHE WAKES UP FEELING BLESSED!

The Guild is also blessed and grateful to have her as a member of our team. Thank you.



Denise Greer

RULERS FOR RENT:

Rulers and patterns will be available for use at Get Away, meetings, PinPals, and Quilt Queens. Please contact Faye Kunz at 563-505-2579 if you have any questions or wish to rent a particular ruler. Faye is usually at general meetings and PinPals but you will need to contact her to ensure that she is at Quilt Queens or Get Away and that the ruler that you wish to use is available. There is no charge to use the rulers at sit & sews. If you wish to use a ruler/pattern at home, you will need to pay a \$15 deposit. Your deposit will be returned to you when the ruler/pattern is returned to Faye.

Deb Tucker Studio 180

Square Squared

Includes Technique Sheet for Stacked Squares and Design Sheet for Large Square Squared 4" finished units Square 2 Trim Down Ruler

Wing Clipper I Trim Down Ruler for Flying Geese Units

Includes Technique Sheet for Pickets & Quickets and Design Sheet for Wing Clipper I 2x4" Finished Units Tucker Trimmer

Includes Technique Sheet for Shaded Four Patch and Design Sheet for Tucker Trimmer 4" Finished Units "V" Block Trimmer

Includes Technique Sheet for Sidekick & High/Low and Design Sheet for V Block 4" Finished Units Diamond Rects

Split Rects

Includes Design Sheet for Split Rects 2 x 4 finished units

Rapid Fire Lemoyne Star

Technique Sheet for Little Houses

Technique Sheet for Migrating Geese

Technique Sheet for Banded Lemoyne Stars

Technique Sheet for Blazing Lemoyne Stars

Technique Sheet for Fussy Cut Lemoynes

Technique Sheet for Lemoynes as Triangles

Technique Sheet for Liberty Lemoyne Stars

Technique Sheet for Strip Pieced Lemoyne Stars

Design Sheet Diamond Rects 2"x4" and 4"x8" Finished Units

Design Sheet for Rapid Fire Lemoyne Star Advanced I

Design Sheet for Rapid Fire Lemoyne Star Advanced II

Design Sheet Rapid Fire Lemoyne Star 4" Finished Units

Design Sheet for Square Squared 4" Finished Units

Marti Michell - Templates

2 1/2" Strippers (3 Pieces)

Drunkard's Path (2 Pieces)

Drunkard's Path (4 companion pieces for making 3", 3 1/2" and 4" units) #8960

Mini Dresden Plate (4 Pieces)

Multi-Size Kite Ruler

Not So Giant Dahlia (9 Pieces)

Stack N Whack Ruler 18 degree Fan (2 sets)

Storm at Sea Diamond Template Set (2 Pieces)

Tessellating Windmill

Winding Ways 6" Set 8052

Set A 3-inch square Basic Set

Set B

Set D 4-inch Square Basic Set (8 Pieces)

Set F Sunburst Block (5 Pieces) (2 sets)

Set H Large Hexagons Plus (3 Pieces) (2 sets)

Set K Schoolhouse

Set L 12" Seven-Patch Block Set

Set N Mini Geometrics (5 Pieces)

Set P Perfect Patchwork Templates (5 Pieces) (2 sets)

Marti Michell - Patterns

60 of One, Half a Dozen of Another

Apple Cores

Bali Breezes

Columbus Square

Fat Quarters Log Cabin

High Flyer Kites

Inner City Wallhanging

I Spy - One is Not Enough

Lazy Afternoon

Radiant Unfeathered Stars

Scrappy Bear's Path & More

Seven Sisters

Sunburst Quilts to Make

Twinkling Star

Winding Ways (2)

Zig Zag Geese

The Perfect Patchwork System Volume 1

The Perfect Patchwork System Volume 2

The Perfect Patchwork System Volume 6

90 Degree Double Strip Ruler (Creative Grids)

Easy Six Ruler

Easy Half Square Triangles Template (Sewing with Nancy)

Fantastic Fan

Flag Day Tumbler Template & Fruit Punch Quilt Pattern

Fun and Done Batting Buddy: Chit Chat, Easy Diamonds,

Fast Lane, & Woven Wonder patterns

Joseph's Coat Templates & Today's Quilter magazine

Log Cabin Hexagon Tool

Quilters Apothecary Mystical Designer

Quick Points Ruler 1 Inch

Quick Points Ruler 1 1/2 inch

QuickStar by Judy Martin

Quilters Strip Ticket Bias Tube Construction and Yardage Tables

Shortcut Binding Tool

Tri-Recs Tools set of 2 (Darlene Zimmerman)

Wheel of Mystery Pattern and templates

Zig Zag Ruler & Windy Day and Diamond Trip patterns

NOT FOR CHECK OUT - USE AT SIT AND SEWS ONLY

12 1/2" Square Sullivan's Edge

Omnigrid

2 1/2" Square

4" Square

6" Square (3)

6" x 24" (2)

1" x 12"

Half Square triangle

Omnigrip 3 1/2" Square

Artstick Expandable yardstick

6" Add an Eighth



MEMBERS MARKET

For Sale...

Treadle Singer Sewing Machine. In great shape.	\$150	Dawn Thompson	563-349-1853
Janomi sewing machine DC3018	\$300	Judy Nelson	563-271-7140
Arrow hydraulic sewing chair	\$130	Judy Nelson	563-271-7140

SEWING MACHINES CLEARANCE SALE NOW UNTIL JUNE 1, 2025.

Simplicity Embroidery System
Montgomery Ward
Montgomery Ward Vintage Model #30
Singer Fashion Mate 7256
Vintage New Home Dayton Model 2M033A
Bernina 1080
Vintage New Home
Esante Embroidery Sewing Machine
JC Penney 6940
Kenmore Life Proof
Morse Deluxe 300 BL
Singer Electronic Control
Vintage Viking 6170
Mercury Electric
Sears Kenmore Model 6816
Kenmore 10 385
Vintage Singer Model 348 (Lt Blue)



AS IS. NO REFUNDS OR RETURNS.
**\$5 is a steal and is a great opportunity to purchase
a previously loved sewing machine.**

Call before they are all gone !!!

Nancy Duvall 563-449-6015 or Dawn Thompson 563-349-1853