



# MISSISSIPPI VALLEY QUILTERS GUILD

Established 1983

July 2026

P. O. Box 2636, Davenport, Iowa 52809-2636

## JULY PROGRAM

## JULY CALENDAR



Get ready to celebrate at our July meeting by joining us for our annual potluck! This is a wonderful opportunity to connect, relax, enjoy time with our quilting friends, and make new acquaintances.

In addition to Show & Tell and our second UFO reveal, please remember to submit your photo for the Sewing Space Game by June 30.

For the potluck, please bring a dish to share:

**1:00 pm meeting: Dish to share or dessert**  
**7:00 pm meeting: Appetizer or dessert**

### President's Message By Diana Engelbrecht

The Semiquincentennial

Wow! What a word. Celebrating the 250th birthday of America.

There are many things to do to celebrate. Starting off with parades, festivals, races, a baseball game, dancing, and live music. And of course, fireworks! I love fireworks. We don't go each year anymore. I guess I'm getting old. I prefer a quiet evening with the hubby, sitting on the porch, watching them from a distance on the horizon. Then going to bed after watching for a few minutes before falling asleep on the porch. Hahaha!!! Younger me never thought that would be the case.

So gather family and friends. Celebrate this young nation's birthday with whatever activities fit your interests. So many choices. See you on the 7th for our potluck meeting.

### CHANGES ARE HIGHLIGHTED IN YELLOW

- **Guild Meeting**  
July 7 ..... **1:00pm & 7:00pm**  
1st Congregational Church 2201 7th Ave, Moline
- **Quilts of Valor**  
July 8 ..... **9:00am - 2:00pm**  
Heritage Church 4801-44th St, Rock Island
- **Charity Quilters**  
July 9..... **9:00am - 3:00pm**  
Deere Wiman Carriage House 909 - 11th Ave, Moline
- **Quilt Queens Breakfast**  
July 9..... **9:00am**  
Village Inn, 53rd & Elmore \*\* All are welcome.  
RSVP Judy Nelson, 563-271-7140
- **Quilters Get Away**  
July 10 ..... **9:00am - 4:30pm**  
July 11..... **9:00am - 7:30pm**  
Butterworth Education Center 701-12th Ave, Moline
- **Scott County Sit & Sew**  
July 10 ..... **9:00am-3:00pm**  
Scott County Library 200 N. 6th, Eldridge
- **Board Meeting**  
July 14 ..... **6:00pm - 8:30pm**  
Butterworth Home (Oak Room) 1105 8th St Moline
- **Fiber Arts**  
July 14..... **9:00am - 3:00pm**  
Eastern Ave Library 6000 Eastern, Davenport
- **Mod Squad Quilters**  
July 16 ..... **6:30pm**  
St John Lutheran Church 4501 7th Ave Rock Island
- **Fairmount Library Sit & Sew**  
July 17 ..... **9:00am - 3:00pm**  
3000 Fairmount, Davenport *Beginners Welcome!*
- **Skill Builder Workshop**  
**Paper Piecing -Beginner Part II & Intermediate**  
July 18..... **9:30am - 3:00pm**  
Deere Wiman Carriage House 909 - 11th Ave, Moline
- **Virtual Sit & Sew**  
July 20 ..... **1:00pm - 4:00pm**  
Karla Miley, 309-738-5227
- **Cuddle (Doll) Quilts**  
July 21..... **9:00am - 2:00pm**  
Butterworth Education Center 701-12th Ave, Moline
- **Program Committee Meeting**  
July 22 ..... **9:00am - 11:30am**  
Butterworth Home (Orchid Room) 1105 8th St Moline
- **Pin Pals Sit & Sew**  
July 28..... **9:00am - 3:00pm**  
Butterworth Education Center 701-12th Ave, Moline
- **No Quilt Show Meeting in July**

# PROGRAMS

## **JULY 7 Potluck, Sewing Space Game & Meeting**

**1:00 PM:** Please bring a main dish or dessert to share

**7:00 PM:** Please bring an appetizer or dessert to share

The Guild will provide disposable tableware, water, and drinks

**Sewing Space Game:** Can You Match the Name to the Sewing Space?



## **AUGUST 4 Jane Darin**

**1:00 PM: “Using Your Scraps & Stash”** Do you struggle to control your scraps? Do your Scrap quilts look like crap? We look at various size building blocks of quilts, so you can decide how to cut those scraps. Then we dive into the stash, pulling out those accent fabrics to give order to those scraps. Let’s get those “quilts” stuck in the stash into a finished project.

**7:00 PM: “Fast, Fun & Fabulous Quilts”** Great quilts don’t have to be hard. Learn techniques to get those quilts together faster. These quilts are great for charity, those not quite ‘quilt worthy’ people or the last minute need. Expect to find at least 1 “wow” project.

**SEPTEMBER 1 Installation of new officers and our guild challenge reveal.** If you haven’t already, there is still time to make something for our guild challenge. Participation is a fun way to build your skills.

**OCTOBER 6 Guild member trunk shows**

## June Meeting Statistics

### Afternoon Meeting

91 Members, 2 Guests  
0 New Members

### Evening Meeting

48 Members, 1 Guest  
0 New Members

**Total Members: 248**

### JUNE DOOHICKEY Drawing Winner:

Linda Klyman

### JUNE NAME TAG WINNERS

**Afternoon:** Cindy Anderson,  
Terry Austin, Bonnie Bandelow,  
Carol Downey, Glenda Flaherty,  
Julie Gray, Mary Newcomb,  
Jo Noon, Deb Schladt,

**Evening:** Barb Cato, Judy Hartz,  
Pam King, Karen Mach, Susan Nixon

## JULY DOOHICKEY

The tickets are \$1.00 each

### Christmas in July

- Elfin Around Tree skirt kit with backing & binding
- Snowbell 4th of July Snowman kit with embellishments
- Missouri Star Pins



Please send newsletter articles to: [newsletter@mvqg.org](mailto:newsletter@mvqg.org)

**August's Newsletter deadline is July 17th, 2026**

## EVENTS AND COMMITTEE REPORTS

### 2026-2027 BOARD OFFICERS VOTE

#### Proposed 2026–2027 MVQG Officers

The following slate of officers will be presented for membership approval at the August Guild Meeting:

**President:** Diana Engelbrecht  
**Vice President:** DeLaine Lanman  
**Secretary:** Lisa Arnold  
**Membership:** Peggy Fierst  
**Newsletter:** Denise Greer  
**Webmaster:** Sherry Hardy  
**Program:** Cindy Anderson

All other board positions will remain filled by members serving the second year of their current terms. Please plan to attend the August meeting and participate in the vote for the 2026–2027 Guild leadership team.

**Judy Nelson, Carol Burrus, Dawn Thompson, Nominating Committee**

# MISSISSIPPI VALLEY FAIR



We will be doing Make-N-Takes and Demonstrations at the Mississippi Valley Fair on August 5 from 10:00am–3:00pm. We are looking for four Make-N-Take ideas and four demonstrations for the morning (10:00am– 12:30pm) and afternoon (12:30pm–3:00pm) shifts. Demonstrations do not need to be the same for each shift. Participants will receive an Admission pass to the Fair at the August meeting.

If you have ideas or questions, please contact:

**Community Education Co-Chair Gail Ethier at [gaillethier@mac.com](mailto:gaillethier@mac.com)  
OR Chair Diana Engelbrecht at [communityed@mvqq.org](mailto:communityed@mvqq.org)**

## ESTATE SALE

### ***Bev Hoy Estate Sale***

Guild members are invited to attend an estate sale for longtime member Bev Hoy.

**Dates:** July 10, 11, and 12

**Location:** 4619 Washington Street, Davenport, Iowa 52806

Bev was an avid quilter and a devoted member of the Mississippi Valley Quilters Guild for more than 25 years. She treasured the many sit-and-sew sessions and the community she found among fellow quilters. As Bev's family navigates this transition, guild members are welcome to attend the estate sale.

## 2026 UFO CHALLENGE



**This quarter's project is #3 on your list.**

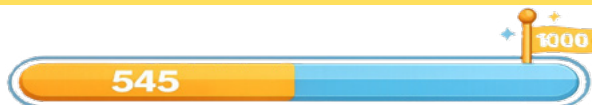
There is still time to join!  
Forms are on page 17 of the newsletter. Don't forget to make a copy for yourself before turning in your form.

**Remember:** Photo proof of completion must be emailed to:

Kathee Secor [kathee@frontiernet.net](mailto:kathee@frontiernet.net)  
**by Sunday, July 5, 2026 (before the July meeting).** Good luck!

**Kathee Secor and Mary Kay Hymes, UFO Challenge Coordinators**

## CUDDLE (DOLL) QUILTS



I hope your summer is going well! Save the gardening and weeding for cooler mornings, stay in the house on warm days to work on Cuddle Quilts! We will meet July 21st, 9:00am - 2:00pm, at Deere Wiman Carriage House. Come with some ideas for designs, or if you have some in the works, come and sew a while. I'll bring cutting mats, cutters, and iron.

We have completed 545 Cuddle quilts!

**Debbie Schladt, CQ Chair 309-786-4387; Margaret Paulos, Co-Chair 563-323-5745**

## FIBER ARTS

The Fiber Arts group will meet Tuesday, July 14, 2026 at the Davenport Public Library Eastern Avenue Branch. Everyone is welcome. Inspire and Create is scheduled from 9:00am-3:00pm, where you can work on anything of your own that you choose to do. The morning workshop, 9:30am-12:00pm, will be making quilted postcards with Diana Engelbrecht. This is suitable for all levels. The meeting will begin at 1:00pm. The group will be sharing their 'Snip and Dye' challenge. Everyone is reminded to wear their name tag in order to enter the name tag drawing prize. The meeting will highlight a show and tell of finished projects by members of the group. Further questions, contact Colleen Curry by phone or email.

Colleen Curry, [cocu@casteldridge.com](mailto:cocu@casteldridge.com) 563-285-1305 (land line)

## UP-COMING SKILL-BUILDER WORKSHOPS

Learn from one of our own! Skill-Builder Workshops are a great way to build new quilting skills while learning from talented MVQG members.

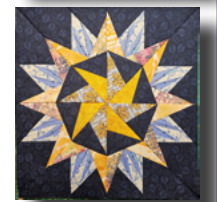
**SATURDAY, JULY 18: Paper Piecing Beginner Part II & Intermediate with Mary Newcomb.** Build your confidence and expand your paper-piecing skills with Mary.

Deere-Wiman Carriage House, 817-11th Ave, Moline; Class 9:30am - 3:00pm.

**SATURDAY, AUGUST 15: Pink Lemonade Quilt with Jane Darin.** Join Jane as she teaches the cheerful Pink Lemonade quilt. Cost: \$15 class + \$10 pattern.

Watch for time and location information at the upcoming meetings.

Denise Greer, Skillbuilder Committee Chair, [skillbuilder@mvqg.org](mailto:skillbuilder@mvqg.org)



## FALL RETREAT

Are you still working on projects for the quilt show or UFOs that are staring at you? Come to retreat in September! You'll have dedicated time to finish projects, learn new techniques, and have FUN! Come join us. Bring your friends. They don't even have to quilt. **The dates are September 23-27, 2026 at Grace Lutheran Camp in DeWitt, Iowa.** The retreat starts at 8:00am on Wednesday and ends at 3:00pm on Sunday. At the retreat you can do most anything you want: sleep in, stay up late, go on shopping trips with your friends, work on projects, read books, or walk the beautiful campgrounds. We do our own cooking, so everyone is assigned to a team to help with one meal. After the August 4th meeting registration will be open to non-members. Fill out the registration form (page 18) and send it in. We hope to see you there.

Mary Pement 309-797-6367; Pam King 309-737-9634

## 2026 QUILT GUILD CHALLENGE

The 2026 Quilt Guild Challenge Theme is **“SPIRIT”**.



The pattern and materials are sitting in my sewing area, reminding me every day that the September deadline is fast approaching. Today, the **“SPIRIT”** moved me to start my presentation for the 2026 Quilt Guild Challenge—a reminder that I need to have something ready to display at the September Guild meeting alongside the other creative entries.

There is still time to sign up and display your **“SPIRIT”**-themed quilt at the September Guild meeting. You can sign up at the July meeting or contact Jo Noon. Voting will be held for 1st, 2nd, and 3rd place, and prizes will be awarded.

You may also enter your quilt in the October 2026 Great River Quilt Show. Quilts may be any size up to 36 inches in length and/or width. Any technique may be used. The entry fee is \$1 per quilt.

**Jo Noon, Challenge Chair, (563) 271-0316**

## IA/IL STUDY GROUP



The Iowa/Illinois Quilt Study Group is hosting Mary Kerr. She is an award-winning quilter, teacher, speaker, author, and appraiser. Check out her fabulous website:

<https://www.marywkerr.com/>

Meeting at the Kalona Quilt and Textile Museum.

August 7 afternoon activity & August 8, 2026 all day lecture, \$35/ day.  
Send check to: Martha Ann Crawford, 4925 Cosgrove Rd, Kalona, IA 52247.  
(319) 683-3244

**Catherine Litwinow, Historical Interest**



## QUILTS OF VALOR

Well Happy 250th Birthday America!

The speech at Kalona Quilt Museum was fun. About 30 people attended, and had lots of questions. The displays that are there for WWII are awesome. They have many red-white-blue quilts, a jeep, a motorcycle, tents, period clothing, lots to see.

The quilts were beautiful. There was an embroidered 50 states one that was fun.

I have been working on one like it. It was nice to see one done.

I hope you have a great 4th of July. This year is already half done. Doesn't seem possible.

*“Dear Terry and QOV group,*

*It is a blessing and an honor to know people like you who are defending the things that matter.  
Thank you for all you do to make sure our veterans feel honored!*

*Shawn C and family”*

Always great to hear the veterans appreciate what we do. I couldn't do this without all of you.

Thank you, thank you, Humbly grateful,

**Terry Austin, QC QOVF 309-912-1063**

**Quilt Stitching**  
— by Shelly —

Professional  
Computerized  
Longarmer

quiltstitchingbyselly.com    q3sstudio.com  
shelly@quiltstitching.com    563-503-5553

## ELDRIDGE LIBRARY EXHIBIT

Come see the exhibit at the  
Scott County Library  
200 N. 6th Ave, Eldridge, IA  
It will be displayed from  
May 1, 2026 - August 30, 2026  
It may be small, but it is always  
mighty!



**Diana Engelbrecht, 563-370-4239**

## Historical Interest

Happy Birthday, USA!!

Wow, 250 years old! Of course, first things first... Betsy Ross might not have made the first flag.

From a 2021 *Newsweek* article discussing the Betsy Ross story: “We do not have archival evidence to support the claim that Betsy Ross made the flag. But in the end, I think the most important story here isn’t about who exactly sewed the flag, but rather, within what context—and that is a fascinating history about female artisans, their skilled craftsmanship, and the material world of the Revolution. Ross took tremendous pride in having known the ‘father of our country’ (she had also made a suite of bed curtains for him earlier, in the work of her shop); in her telling, it was not a claim about having made the ‘first flag,’ but rather having known Washington and having made one small contribution to the final appearance of the flag. That all rings true to me.”

Ok, now the good stuff! Reproduction fabrics—or the real thing.

Quilt historian Barbara Brackman wrote “Many of the stars in my antique fabric collection originated after the Civil War, which ended in 1865. A decade later the Centennial anniversary of the Declaration of Independence inspired a fair in Philadelphia and a plethora of patriotic prints. The theme in 1876 was a re-union of North and South under the Union flag and symbols such as the eagle and George Washington.”



Guess I’m going to get some Semiquincentennial fabric!

**Catherine Litwinow, Historical Interest**

## 2026 GREAT RIVER QUILT SHOW NEWS

### Quilt Show Guidelines/Rules and Categories

The Guidelines/Rules for entry into the 2026 Show, along with the show categories, are included on pages 14-16. Please review them carefully, as there have been several changes since the 2024 Guidelines and Rules. **Please read BOTH.** We will answer questions at the monthly meets or you can text or call Diana at (563) 370-4239.

## Quilt Show Registration

Registration will be open from **June 1, 2026 to August 23, 2026 at 11:59 PM.**

As in the past, you will receive an email confirmation of your registration. If you do not receive one or need to double-check that the item was submitted, you can contact me, Lynn Figg at figg636@gmail.com or by phone at 563-370-6910. Please leave a message or text me as I have been getting a large amount of spam calls and this is how I screen them. I will NOT be sending an email to each individual person with a list of their entries for this show like I did for the 2024 show. **There have been some changes made to submit items in the show.** You will be asked to acknowledge that you have read these guidelines and understand the expectations. **Also, please check the website for the list of categories, as there have been some changes to these as well.** There will be paper copies available of the registration form starting in June at the meetings for those who have internet and/or computer issues.

**Lynn Figg, Quilt Show Registration Chair, figg636@gmail.com, 563-370-6910**

## Quilt Show Appraisals

### Appraisal Appointments at the MVQG Great River Quilt Show

Appraisal appointments are now open to have your prized quilts and quilted items appraised by AQS certified quilted textile appraiser Chris Moline. Appraisals take place in the Fair Center Building at the Mississippi Valley Fair Grounds in Davenport on October 15, 16 and 17, 2026.

Appointment times are at half-hour intervals between 12:00pm and 5:30pm on Thursday October 15th. Because the show is still being hung, **Thursday is reserved for MVQG members only whose quilt is not being hung in the show.**

Half-hour appointments are available on Friday October 16th from 9:00am to 5:30pm and Saturday October 17th from 9:00am to 3:30pm. **Friday and Saturday appointments are open to MVQG members and the general public. Quilts hanging in the show are eligible to be appraised these days.**

**Appraisal Guidelines:** Quilted items and quilt tops of an estimated value of \$350 or more are suitable for appraisal unless part of a collection. All items of a collection, where the average value exceeds \$300, should be appraised. The appraiser may decline to do an appraisal for items of lesser value, or if outside her area of expertise. There is no charge if the appraisal is declined.

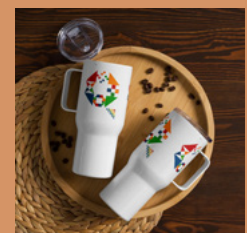
Cost of an appraisal is \$60, cash or check. Only one quilt can be appraised per half-hour appointment.

If you have any questions or to make an appointment please see Dorine at Guild meetings July - October or contact her:

**Dorine Donaubauer, Quilt Show Appraisals Chair,  
(309) 428-0840, molinedorine@gmail.com**



*Check out the MVQG Etsy shop!  
T-Shirts Zip Hoodies  
Water bottles Travel Mugs  
[www.etsy.com/shop/MVQuiltersGuild](http://www.etsy.com/shop/MVQuiltersGuild)*



## Quilt Show Raffle Baskets

At this time, my hunt for raffle basket contributors is winding down. Now I just wait for businesses to respond.

We will be holding a **Basket Assembly Day on September 16 from 9:00 am to 4:00 pm** at the Deere-Wiman Carriage House, 909 11th Ave., Moline, IL. If you can help, please text me at 563-343-0470 with your name and the hours you are available. *(Please note that I will be unavailable to respond to texts from July 7 through August 5.)*

During the quilt show in October, we will also need volunteers for setup, during the show, and tear down. Setup includes transporting baskets to the fairgrounds and arranging the baskets and bags on the tables. During the show, volunteers will sell raffle tickets and keep an eye on the baskets. After the show, volunteers will help distribute baskets to the winners and tear down the raffle basket area.

If you can help with any of these volunteer opportunities, please contact Dorine Donaubaer.

**Karen Mach, Quilt Show Raffle Basket Committee Chair 563-343-0470**

## Quilt Show Volunteers

### ***Hello Quilters!***

Very important dates for the Mississippi Valley Quilters Guild are **October 13, 14, 15, 16 and 17, 2026**. These are the dates of the biannual MVQG Great River Quilt Show where we showcase the talents of our members. It is also our major fund-raising event. Profits from our show help support the work of our guild committees and allows us to bring nationally known quilt teachers to the QCA.

Many volunteers before, during and after the show are needed to make our show a success. The Quilt Show Committee Chairs have already spent many hours planning for this 2026 show.

### ***WE NEED YOU!!***

So you can make an informed decision about where you want to volunteer, brief job descriptions are included in this and the next several newsletters. **See pages 11-13**. Shifts are approximately 2 hours long, except during judging, set-up and tear-down. Some jobs are sit down jobs. Please be generous with your time.



**Volunteer sign-ups will begin at the August Guild meetings.**

**Dorine Donaubaer, Quilt Show Volunteer Chair,  
(309) 428-0840, molinedorine@gmail.com**

## VOLUNTEER SPOTLIGHT



**Lois Kundel**

Meet **Lois Kundel**, our Ruler Librarian.

Lois Kundel has been sewing since seventh grade when she started making her own clothes and continued making her whole wardrobe through high school and beyond.

Lois was introduced to quilting by her friend Sandy, a coworker at Palmer College. They participated in making a quilt for Palmer's new Florida campus each making a block for it. The first quilt she made was a king size quilt for her bed. It is the only quilt she has kept for herself. Traditional quilts are her favorite style.

After retiring, Lois joined MVQG in 2017. She is currently the guild's Ruler Librarian and hands out the charm pins for Show and Tell at the afternoon meeting.

Lois was born in Davenport. During her first husband's military service, she lived in California a year and three years in Hawaii. She returned home to Davenport in 1977.

She attended Scott Community College and St. Ambrose University, earning a bachelor's degree in Communication and Computer Science in 2002, followed by a master's degree in Organizational Leadership. Her professional career included working in chiropractor's office for two years before joining Palmer College in 1983.

Lois and her husband, Harlan, enjoy spending time with their blended family, which includes one son and three stepdaughters.

Gardening, growing both flowers and vegetables, is one of Lois' favorite things to be doing, if not sewing. She also volunteers with the Elks, the Walcott Legion Auxiliary, her church, Eastside Mission, and the Mississippi Valley Quilters Guild.



**Michael Christian**

Meet **Michael Christian**

Michael got a job working as a broadcast engineer in 1976 at sixteen years old. They were looking for anyone who understood and could do the job. In 1978 he went to Sacramento State University for electronics engineering and computer science.

One of Michael's favorite jobs was as assistant administrator for a mainframe computer company. In that role, he supervised staff and oversaw critical operations, software updates, database management, system error monitoring, and repairs. He appreciates modern networking.

In 1982, he spent two years training students in broadcasting at a radio school. He owned and operated ACDC Consultant Engineering in Sacramento, California, for ten years, specializing in automation and computer equipment. As changes in his vision made broadcast engineering more difficult, he started doing programming work for other businesses. His final work in broadcast engineering was in 1992.

Michael became a member of MVQG in 2021 and currently serves on the organization's Information Technology (IT) Committee.

Born in Eureka, California, Michael has lived Sacramento, Fresno, West Concord, Minnesota, three locations in Germany, and now the Quad Cities area. Michael and his sister were adopted into a family that operated a dairy farm. The family business expanded to include a milk processing plant, home delivery service, ice cream parlor, and several restaurants. Michael was trained as an executive chef to support the family business, but his passion for computers took him somewhere else.

Michael enjoys amateur radio and building electronic devices. For two years, he and a friend helped train police dogs for the Oakland, California Police Department. At home, Michael and his wife Peggy share their lives with three dogs.

## Quilt Show Volunteer Job Descriptions

**Admissions:** You will greet show attendees and take their admission money. You will have a brief orientation before your shift begins. This position requires you to handle money and make change. This is a sit-down job.

**Announcer:** Using a microphone, you will make announcements as needed. Scripts will be provided. Should have a confident speaking voice.

**Appraisals:** Appraisals are by appointment only. You can make an appointment for walk-ins, if there are any openings. You will greet the customer at their appointed time and take their payment. You will locate the customer's quilt if it is hanging in the show. You will assist the appraiser as needed. You are requested not to speak to or ask questions of the appraiser while she is performing an appraisal.

**Bed Turning – Thursday:** On Thursday you will help set-up/organize the Bed Turning area.

**Bed Turning – Friday and Saturday:** During the Bed Turning Programs volunteers are needed to hold up the quilts as they are being talked about. After the programs the quilts need to be rearranged. Program is at 1:00PM on both days.

**Charity Boutique:** You will sell items handmade by MVQG members. You will handle money and make change. This is a sit-down job.

**Demonstrations:** Assist each teacher to set-up their demonstration. Also, need a volunteer who will slow walk around the show holding a sign to promote upcoming demonstrations.

Note: If you would like to demonstrate a quilting or sewing technique, please contact Chairperson Linda Klyman (309) 716-1796 as soon as possible as there are a few demo times still open.

**Lunch Helper:** On set-up days (Wednesday and Thursday) lunch will be catered in. Help is needed with moving the tables and chairs to the lunch area, serving the food and cleaning the tables after lunch. Then on Thursday the tables and chairs will need to be repositioned.

**Raffle Baskets – Pre-Show:** You will have the fun job of making the baskets that will be raffled off at the quilt show. You and a partner(s) will select the donated items to make a themed basket. This is completed before the show. After the baskets are made you will help Chairperson Karen Mach transport the baskets to their storage area. Date/time/place TBD.

**Raffle Baskets – Show Set-up:** You will help Karen load baskets from storage, transport them to the fairgrounds and then unload them. You will assist Karen to set-up the Raffle Baskets booth.

**Raffle Baskets Ticket Sales:** You will work the floor selling tickets for Raffle baskets attendees at the show. You will be handling money and making change.

**Judging:** Judging volunteer jobs take place in the Keppy Building on Tuesday, Wednesday and Thursday.

**Judging – Quilt Check-In:** Members deliver their registered quilts to the check-in area on Tuesday afternoon and Wednesday morning. Check-in times are 1PM-6PM on Tuesday, October 13<sup>th</sup> and 7AM-8AM on Wednesday, October 14<sup>th</sup>.

Volunteers make sure tags are pinned in the proper place and folded correctly then deliver them to the correct location/category in the judging area. There will be a training session about 1 hour before check-in starts.

**Judging/Scribes:** Scribes write the judge's comments for each quilt. Scribes MUST be able to write quickly and legibly, hear softly spoken words, focus on what is being spoken and focus on writing those comments. Scribes cannot speak to the judge unless they need something repeated.

**Judging/General:** General judging volunteers make sure quilts are stacked in the correct order, move quilts from categories to judging tables, lay them out on the judging table then hold them up for the judge to see, fold quilts when judging is complete then move them to the hold area or release table and help load them into transport. These jobs will be divided up among the general volunteers. Requires lifting and standing.

- Judging Room training will be before your shift begins at 8AM and during lunch hours on both Wednesday and Thursday.

Note: In the judging area it is preferred that you do not speak at all, but if you must, whisper to each other during judging. If it gets too loud you will be asked to not talk at all. NO conversation with, nor questions to, the judges is allowed. Also, maintain at least a 6-foot space between you and the judges unless you are asked to step closer to assist them.

**Merchant Mall Assistant:** The merchant Mall Assistant (MMA) is a representative of the Mississippi Valley Quilters Guild's Merchant Mall who interacts with the Great River Quilt Show vendors. MMAs assist the Merchant Mall Chairperson and/or Co-Chairperson with tasks such as, but not limited to:

- Provide relief to vendors for occurrences such as restroom break, lunch break, etc. during which time Merchant Mall Assistants will not be expected to perform retail transactions in the vendor's absence but rather inform retail customers the vendor personnel will return momentarily
- As directed and/or scheduled by the Merchant Mall Chair or Co-Chairperson, visit vendor booths to provide vendors, or their employees, items such as water/beverages or snacks.
- Respond professionally to questions regarding Merchant Mall processes. If unable to accurately answer a vendor's Merchant Mall-related question, inform the Merchant Mall Chair or Co-Chairperson promptly so they may communicate with vendor(s) or provide further assistance.
- Respond professionally to Great River Quilt Show attendees, which may include general quilt show questions or suggestions for future Merchant Mall vendors.

**Quilt Returns:** At the end of the show and as quilts are taken off the quilt stands, they are delivered to the returns area. There they need to be organized in numerical order on designated tables before they can be returned to the members. At the Returns front table, members receive a pick-up number. When their number is called, their quilt(s) are matched with the registration number on the quilt then dispersed to the member. This job requires standing, walking and lifting quilts.

**Raffle Quilt Marketing:** Before show volunteer help is needed. Raffle Quilt Marketing Chairperson Michelle Bailey needs help marketing our beautiful raffle quilt. You will assist her at various events/locations to sell quilt raffle tickets and talk about our wonderful quilt show. You will handle money and make change. If you are interested in helping, please contact Michelle at (563) 505-2519 or Dorine (309) 428-0840. If you know of an event where we could market the raffle quilt, please contact Michelle.

**Raffle Quilt Ticket Sales:** At the show, you will sell raffle tickets for our beautiful raffle quilt. Requires you to handle money and make change. This is a sit-down job.

**Set-Up:** Set-up is a HUGE job. This is where we need the help of your men folk, significant other, kids, friends, neighbors and extended family.

**Set-Up/Quilt Stands Pick-Up:** Before the show, the quilt stands need to be loaded into the trailer at the storage facility. Date/Time/ Location TBA

**Set-Up/Quilt Stands:** All the wooden stands need to be assembled and placed according to the set-up plan for hanging the quilts.

To assemble the quilt stands on Tuesday, both a drill with a 7/16ths socket and a wrench are needed. Use the drill on 1 side to turn the nut and the wrench on the other side to hold the bolt. Cordless work best. If you need electricity, please bring your own extension cord. Will also need these tools for teardown on Saturday. Be sure to label everything you bring with your name.

**Set-Up/Quilt Hanging:** All of the registered quilts need to be hung. This is a huge job where many hands are needed. (Last show we had 500 quilts to be hung.) Step stools/ladders are very helpful for set-up, quilt hanging and teardown. If you are not comfortable climbing on a ladder you can pair with someone who is. Be sure to label everything you bring with your name.

**Set-up/Quilt Organizer:** When the quilts come over from the Keppy Building after they are judged they will have a category list. The quilts need to be checked off the list so we know they are all there. You and a partner will check them off then deliver them to their hanging area.

**Teardown:** The show is over. Whereas it took 2+ days to set-up the show, with enough volunteers, it will only take 1 ½ - 2 hours to tear it down. (It is really amazing to see.) Quilts need to be taken off the quilt stands and transported to the Quilt Return area. The wooden quilt stands and the vendor booth stands need to be disassembled and loaded into the trailer. This again is where we can use the help of your men folk, significant other, kids, friends, neighbors and extended family.

**Volunteer Check-In:** All volunteers need to check-in and check-out. It is very important to keep an accurate track of volunteer hours because of the Guild's IRS 501(3)c non-profit designation. The volunteer hours are reported on our annual income taxes. Volunteers are needed on Tuesday, Wednesday and Thursday at 2 locations; one in the Keppy Building where quilt intake and judging take place and another in the Fair Center Building where set-up and quilt hanging take place. On the Friday and Saturday of the show the Volunteer Check-In/Check-Out table needs to be staffed in the Fair Center Building only. Volunteers will receive, and return, an apron and white gloves (if needed) at this table. Volunteers sometimes leave their coats, purchases and purses in this area. This is mostly a sit-down job.

**White Glovers:** You will patrol among the quilts in your assigned area to answer any questions the show attendees may have and to show the backs of quilts if asked. You will wear the provided white gloves to avoid staining the quilts with hand oils. This is a standing/walking job.

**Dorine Donaubaer, Volunteers Chairperson, (309) 428-0840, molinedorine@gmail.com**

## Guidelines for the 2026 Great River Quilt Show

1. You must be a member of the Mississippi Valley Quilters Guild for the year your entry is due (September 1, 2025-August 31, 2026) and the year the show is in (September 1, 2026-August 31, 2027). If you were a member of the guild the prior year (2024-2025), a full membership fee of \$35 will be due no matter in which month you are renewing your membership.
2. Item must be entered by August 25, 2026, 11:59 PM.
3. Category sizes may be adjusted by the entry/judging room committees as needed for bed, wall, and art categories to balance numbers for judging.
4. Entries must **not** have been shown in a previous MVQG quilt show.
5. In the bed quilt categories: Proportionate=square or longer than it is wide.
6. Collaborative categories include 2 or more makers. **You must always include the quilter in your thought processes when entering.**
7. To be judged, your entry must have 3 layers (top, batting, and back) quilted together. The exception to that rule is the miscellaneous category where quilts without batting such as crazy quilts, wool quilts, and cathedral windows may be entered.
8. To be judged, the back must be visible. DO NOT cover the back of your work. The judges need to see the BACK as well as the front of your work.
9. A 4-inch sleeve must be attached to the top of the back of the quilt. If your quilt is longer than 90 inches, measure 90 inches up from the bottom and attach the sleeve at that level. Instructions for the sleeve can be found on our website at [mvqg.org/great-river-quilt-show](http://mvqg.org/great-river-quilt-show)
10. Labels Required: Title of quilt and maker's name and anything else you want to include. Best placement is on **the back bottom left corner**.
11. Items should be clean and odor free.
12. For copyright purposes, please identify designer and pattern or recognize the source of inspiration where requested on the entry form.

### CATEGORIES/ITEMS NOT ELIGIBLE FOR BEST OF SHOW:

- 1700-Found and Finished
- 1900-Wearables: Garments, Bags, Purses, Accessories
- 2000-Miscellaneous
- 2100 Show Challenge
- 2300-Junior (Non-judged)

### **ALL OTHER CATEGORIES ARE ELIGIBLE FOR BEST OF SHOW.**

### DEFINITIONS:

- **All Hand Done:** Piecing and quilting must be done by hand. Backing may be machine pieced. Binding may be attached by machine but must be finished by hand.
- **Small Bed Quilt:** Crib to Full (up to 69" wide and proportionate in length)
- **Large Bed Quilt:** Queen to King (over 70" wide and proportionate in length)
- **Solo:** Constructed, stitched, and quilted by ONE MAKER ONLY
- **Collaborative:** Constructed, stitched, and quilted by 2 or more makers (piecers and/or quilters). 2 ribbons awarded per placing.
- **Pieced:** Pieced by hand or machine. No other techniques allowed (no embellishments, no appliqué, etc.).

- **Applied Techniques:** Any technique ‘applied to the fabric.’ Appliqué, painting, beading, crystals, etc., or any combination of these techniques is allowed in addition to piecing.
- **Computer Guided Piecing, Embroidery and/or Appliqué:** Any item a computerized embroidery type machine is used. This class is for all items such as bed quilts, wall quilts, tree skirts, bags, etc.
- **Art:** Original designs only—no patterns or kits allowed. Quilts will be required to include a **short** (50 word) artist’s statement listing all techniques/methods used. (This should not include where/why the fabric was purchased.) Statements may be read aloud for the consideration of the judge. The category will be divided into sizes to balance the numbers to be judged.
- **Modern:** May be pattern or kit. Must utilize ‘modern’ style in piecing and quilting design.
- **Wall Quilts:** Designed to hang on a wall.

### Categories for 2026 Great River Quilt Show

**1100- All Hand Made:** Must be made entirely by hand, with no machine sewing/quilting other than sewing the binding to the front of the quilt and piecing the back. All sizes, techniques, makers allowed.

**Small Bed Quilts:** Used on a bed or crib; up to (and including) 69” wide and proportional in length.

**1110- Small Solo, Pieced:** One person made top and quilted it. **Only** piecing is allowed, no appliqué or embellishments of any kind will be allowed.

**1120- Small Solo, Applied Techniques:** One person made top and quilted it. All appliqué, painting, embellishments, combination of techniques with piecing, as well as entirely appliquéd quilts and whole cloth quilts.

**1130- Small Collaborative, Pieced:** Two or more persons (piecers and/or quilters) worked on any part of making the quilt. **Only** piecing is allowed, no appliqué or embellishments of any kind will be allowed. 2 ribbons will be awarded per placing.

**1140- Small Collaborative, Applied Techniques:** Two or more persons (piecers and/or quilters) worked on any part of making the quilt. All appliqué, painting, embellishments, combination of techniques with piecing, as well as entirely appliquéd quilts and whole cloth quilts. 2 ribbons will be awarded per placing.

**Large Bed Quilts:** Used on a bed; wider than 70” and proportional in length.

**1210- Large Solo, Pieced:** One person made top and quilted it. **Only** piecing is allowed, no appliqué or embellishments of any kind will be allowed.

**1220- Large Solo, Applied Techniques:** One person made top and quilted it. All appliqué, painting, embellishments, combination of techniques with piecing, etc. as well as entirely appliquéd quilts and whole cloth quilts.

**1230- Large Collaborative, Pieced:** Two or more persons (piecers and/or quilters) worked on any part of making the quilt. **Only** piecing is allowed, no appliqué or embellishments of any kind will be allowed. 2 ribbons will be awarded per placing.

**1240- Large Collaborative, Applied Techniques:** Two or more persons (piecers and/or quilters) worked on any part of making the quilt. All appliqué, painting, embellishments, combination of techniques with piecing, as well as entirely appliquéd quilts and whole cloth quilts. 2 ribbons will be awarded per placing.

**1300- Computer Guided Piecing, Embroidery and/or Appliqué:** Any item a computerized embroidery type machine is used. The computer guided piecing, embroidery and/or appliqué is the predominant design element (50% or more). This class is for all items such as bed quilts, wall quilts, tree skirts, bags, etc.

**1400- Miniature:** Miniature quilts should look like a full-size quilt or wall hanging that is reduced in scale. The maximum size is 24" x 24". All techniques, all makers.

**1500- Modern:** Quilt should have a clean, modern design and a strong visual impact. Modern quilts often use asymmetry, improvisational piecing, minimalism, negative space, a reinterpretation of traditional blocks or the lack of a visible block structure. They are machine or hand quilted in a way that is complementary to the design.

**WALL Quilts** - Categories may be tweaked to balance numbers of entries.

**1610 - Wall Small, Pieced:** - Quilts will be under 35" wide. Patterns and kits allowed. **Only** piecing is allowed, no appliqué or embellishments of any kind will be allowed.

**1620 – Wall Small, Applied Techniques** - Quilts will be under 35" wide. Patterns and kits allowed. All appliqué, painting, embellishments, combination of techniques with piecing, etc. allowed, as well as entirely appliquéd quilts and whole cloth quilts.

**1630 - Wall Medium, Pieced:** - Quilts will be between 35" and 55" in width. Patterns and kits allowed. **Only** piecing is allowed, no appliqué or embellishments of any kind will be allowed.

**1640 – Wall Medium, Applied Techniques** - Quilts will be between 35" and 55" in width. Patterns and kits allowed. All appliqué, painting, embellishments, combination of techniques with piecing, etc. allowed, as well as entirely appliquéd quilts and whole cloth quilts.

**1650 - Wall Large, Pieced:** - Quilts will be over 55" in width. Patterns and kits allowed. **Only** piecing is allowed, no appliqué or embellishments of any kind will be allowed.

**1660 - Wall Large, Applied Techniques** - Quilts will be over 55" in width. Patterns and kits allowed. All appliqué, painting, embellishments, combination of techniques with piecing, etc. allowed, as well as entirely appliquéd quilts and whole cloth quilts.

**1700-Found and Finished:** Quilts will include all sizes, all techniques. Quilts must have been started by another quilter (known or unknown) and finished by entrant(s)

**1800-Art:** Any size. MUST be completely original design. **Absolutely no patterns or kits allowed.** Cannot be inspired by an existing pattern. Categories will be determined by the number of entries.

**1900 - Wearables: Garments, Bags, Purses, Accessories** Items do not need to be quilted. All techniques, all makers allowed. Pattern designer required on entry form.

**2000- Miscellaneous:** Any entry that does not fit into any other category and items such as 3-D or household items. Examples: table runners, place mats, and those quilts without batting (only 2 layers) such as crazy quilts and cathedral windows. All techniques, all makers allowed. Do not enter a quilt that fits into the bed or wall quilt categories.

**2100-MVQG Quilt Show 2026 Challenge, Emphasis on the Curves:** Maximum size is 30 x 30 inches. Traditional, modern, or art techniques can be employed. Show us your curves! Anything from Storm at Sea, Drunkards Path, improv, or something that looks curvy to you.

**2300- Junior:** Entrant must be under the age of 18 and be a child/grandchild of a member. Each entry will receive a participation ribbon. **(Non-judged category)**

**2400- For the Joy of Sharing (Non-judged):** For items which simply want to be seen and not judged!

## MVQG 2026 UFO Challenge

1. List 4 UFO's. We are keeping the option to add 2 additional projects (A & B). These can be substituted for your project. Fill in the form with a brief description of the current status of the UFO and what your goal is for the project, ie., whatever YOU want to achieve for each project. **Be sure to make a copy for yourself!!**
2. Mail\* your completed form and \$5 fee to Mary Kay Hymes or turn this in at any Guild meeting.  
\*See membership book for address.
3. The numbers will be drawn at the January, April, July and October Meetings.
4. Photo proof of completion must be **EMAILED to Kathee Secor**, (kathee@frontiernet.net) by or on **the Sunday Before** the April and July, 2026 Meetings. October 2026 and January 2027 should be sent to Mary Kay Hymes (mkhymes@gmail.com). Mark your calendar. **PLEASE USE THE FOLLOWING AS THE SUBJECT: UFO CHALLENGE # \_\_.** Also, notify us if you substituted either A or B for the drawn number. This enables us to quickly find your project if you have any questions. Please bring your UFO to the guild meeting for Show and Tell on the month it is due.

\*\*\*\*\*

1. \_\_\_\_\_

\_\_\_\_\_

2. \_\_\_\_\_

\_\_\_\_\_

3. \_\_\_\_\_

\_\_\_\_\_

4. \_\_\_\_\_

\_\_\_\_\_

A. \_\_\_\_\_

\_\_\_\_\_

B. \_\_\_\_\_

\_\_\_\_\_

Signature: \_\_\_\_\_ Date: \_\_\_\_\_

Email: \_\_\_\_\_ Phone: \_\_\_\_\_

Fall 2026 MVQG Retreat Registration

It's time for Retreat! The MVQG Fall Retreat is September 23-27, 2026 at Grace Lutheran Church Camp in DeWitt, Iowa. Retreat starts at 8AM on Wednesday and ends at 3PM on Sunday.

For those not familiar with the MVQG Retreat, retreats are held twice a year, in the spring and the fall.

At retreat you can do anything you want: sleep in, stay up all night, go on road trips with your friends, work on your own projects, read books, or walk the beautiful camp grounds. We do our own cooking so everyone is assigned to a team to help with one meal. Most of all, Retreat is FUN! To register, complete the registration form below; and mail it along with your nonrefundable deposit to Pam King for either building. If you have any questions please contact Pam or Mary.

Registration is limited to 20 people per building and to MVQG members only until August 4, 2026. If there are any openings after that non-members may register. This allows everyone to have plenty of workspace.

Price is \$25 per night for those retreaters staying at the camp overnight for a maximum of \$100 for the entire Wednesday thru Sunday retreat. The daytime only fee is \$17 per day for retreaters not staying overnight. You may register for all nights or all days only or any combination of nights and days. If you have a meal preference or a partner you like to work with please indicate that also. **We have now hired a cleaning team to help with the clean up. There is a cleaning fee of \$10 payable at retreat.**

Name: \_\_\_\_\_ Phone: \_\_\_\_\_  
Address: \_\_\_\_\_ City: \_\_\_\_\_ State: \_\_\_\_\_  
Zip: \_\_\_\_\_ E-mail: \_\_\_\_\_

**Would you be interested in a massage if one was available? \_\_\_\_\_ Yes \_\_\_\_\_ No**

I will attend the following nights (please mark): \_\_\_ Wed \_\_\_ Thurs \_\_\_ Fri \_\_\_ Sat  
Cost = number of nights marked \_\_\_\_\_ X \$25 = \_\_\_\_\_ Total

I will attend the following day(s) only, no nights (please mark): \_\_\_ Wed \_\_\_ Thurs \_\_\_ Fri \_\_\_ Sat  
Cost = number of days marked \_\_\_\_\_ X \$17 = \_\_\_\_\_ Total

Building Preference: Peter \_\_\_\_\_ Andrew \_\_\_\_\_ No Preference \_\_\_\_\_

Meal preference: \_\_\_\_\_ Partner: \_\_\_\_\_

A non-refundable deposit of 1/2 your total cost will hold your spot.

Please make checks payable to MVQG. Mail your registration form and deposit check to Pam along with your building preference. Your confirmation and retreat information will be e-mailed to you.

Pam King  
2002 - 46th Street  
Rock Island, IL 61201  
iquilt13@yahoo.com  
309-737-9634

Mary Pement  
[marpem49@gmail.com](mailto:marpem49@gmail.com)  
309-797-6367

---

Your Name: \_\_\_\_\_

Please provide us with a name and number of someone to reach in case of emergency.

Name \_\_\_\_\_ Phone # \_\_\_\_\_



## **Mississippi Valley Quilters Guild**

### **Great River Quilt Show October 16th & 17th, 2026**

The Mississippi Valley Quilters guild is preparing for the 2026 Great River Quilt Show. **As a 501(c)(3) non-profit organization**, the quilt show is our primary source of revenue for the guild activities and the many charitable organizations we support. Raffle baskets and sponsorship are a major part of these fund raising efforts.

We are asking your business to support the guild by donating goods or funds to build raffle baskets or to support the guild through a sponsorship of \$250.00, \$500.00, or \$750.00.

Raffle baskets typically have a theme reflecting a variety of interests. Some of these themes have included automotive, gardening, children, nature, holidays, get-aways, pets, and of course quilt related themes. They include quality goods, gift certificates, classes, services etc.

In 2024 the guild hung close to 500 quilting exhibits and welcomed over 1500 visitors to the Great River Quilt show held at the Mississippi Valley Fairgrounds in Davenport, IA.

Charitable organizations the MVQG has supported include: Head Start of Scott Co, IA and Rock Island Co, IL — Quilts of Valor — Habitat for Humanity — De La Cerda — Beacon of Hope — In Touch Adult Daycare — Birthright Pregnancy Resources — Empowering Abilities \_\_ and centers for both domestic and substance abuse.

MVQG is committed to the education and encouragement of its members and the community (both young and old) in the art of quilting and other fiber arts.

**All of this is accomplished by the countless volunteer hours of our members and the generous contributions from the Quad City community and beyond.**

All raffle basket donors will be acknowledged on the basket, on our website, and in our newsletter. **Details regarding sponsorship are included on the next page.**

We appreciate your consideration of our request for raffle basket contributions or sponsorship. We request that sponsorship forms and raffle basket donations be received or arrange pick up by July 15th, 2026

Please reach out to the contacts below with any questions or to arrange a pick up time for local donations.

Thank you,

Karen Mach  
MVQG Quilt Show Raffle basket co-chairperson  
[rafflebasketchair@mvqg.org](mailto:rafflebasketchair@mvqg.org)  
563—343-0470

Peggy Fierst  
MVQG Quilt Show Chairperson  
[quiltshowchair@mvqg.org](mailto:quiltshowchair@mvqg.org)  
507-513-3936



## SPONSORSHIP DETAILS AND RESPONSE FORM

There are 3 levels of sponsorship

### **O Blue Ribbon-Mariners Compass – \$750.00**

Your business name/logo will be displayed at the main entrance of the show and on the quilt show floor with the Blue Ribbon winners.

Sponsorship announcements during the show

12 months of advertising/acknowledgment on the MVQG website and in the Guild newsletter beginning August, 2026

4 Quilt Show entry tickets

### **O Red Ribbon-Double Wedding Ring – \$500.00**

Your business name/logo will be displayed at the main entrance of the show and on the quilt show floor with the Red Ribbon winners.

Sponsorship announcements during the show

9 months of advertising/acknowledgment on the MVQG website and in the Guild newsletter beginning August, 2026

2 Quilt Show entry tickets

### **O Gold Ribbon-Flying Geese – \$250.00**

Your business name/logo will be displayed at the main entrance of the show and on the quilt show floor with the Gold Ribbon winners.

Sponsorship announcements during the show

6 months of advertising/acknowledgment on the MVQG website and in the Guild newsletter beginning August, 2026

2 Quilt Show entry tickets

---

Please indicate your level of sponsorship, fill out the information below, and return this page along with a check made out to MVQG to the address below. Send a digital copy of your logo, and a digital copy of your business card (or a business card sized add) to be used as advertisement at the show and on our website to one of the email addresses below.

Business Name \_\_\_\_\_

Address \_\_\_\_\_

Contact Name \_\_\_\_\_

Contact Phone Number \_\_\_\_\_

Contact email \_\_\_\_\_

Mississippi Valley Quilters Guild  
PO Box 2636  
Davenport, IA

rafflebasketchair@mvqg.org

quiltshowchair@mvqg.org

## RULERS FOR RENT:

Rulers and patterns will be available for use at Get Away, meetings, Pin Pals, and Quilt Queens. Please contact Lois Kundel at 563-370-0086 if you have any questions or wish to rent a particular ruler. There is no charge to use the rulers at sit & sews. If you wish to use a ruler/pattern at home, you will need to pay a \$15 deposit. Your deposit will be returned to you when the ruler/pattern is returned to Lois.

### Deb Tucker Studio 180

Square Squared

Includes Technique Sheet for Stacked Squares and Design Sheet for Large Square Squared 4" finished units Square 2 Trim Down Ruler

Wing Clipper I Trim Down Ruler for Flying Geese Units Includes Technique Sheet for Pickets & Quickets and Design Sheet for Wing Clipper I 2x4" Finished Units Tucker Trimmer

Includes Technique Sheet for Shaded Four Patch and Design Sheet for Tucker Trimmer 4" Finished Units "V" Block Trimmer

Includes Technique Sheet for Sidekick & High/Low and Design Sheet for V Block 4" Finished Units

Diamond Rects

Split Rects

Includes Design Sheet for Split Rects 2 x 4 finished units

Rapid Fire Lemoyne Star

Technique Sheet for Little Houses

Technique Sheet for Migrating Geese

Technique Sheet for Banded Lemoyne Stars

Technique Sheet for Blazing Lemoyne Stars

Technique Sheet for Fussy Cut Lemoynes

Technique Sheet for Lemoynes as Triangles

Technique Sheet for Liberty Lemoyne Stars

Technique Sheet for Strip Pieced Lemoyne Stars

Design Sheet Diamond Rects 2"x4" and 4"x8" Finished Units

Design Sheet for Rapid Fire Lemoyne Star Advanced I

Design Sheet for Rapid Fire Lemoyne Star Advanced II

Design Sheet Rapid Fire Lemoyne Star 4" Finished Units

Design Sheet for Square Squared 4" Finished Units

### Marti Michell - Templates

2 1/2" Strippers (3 Pieces)

Drunkard's Path (2 Pieces)

Drunkard's Path (4 companion pieces for making 3", 3 1/2" and 4" units) #8960

Mini Dresden Plate (4 Pieces)

Multi-Size Kite Ruler

Not So Giant Dahlia (9 Pieces)

Stack N Whack Ruler 18 degree Fan (2 sets)

Storm at Sea Diamond Template Set (2 Pieces)

Tessellating Windmill

Winding Ways 6" Set 8052

Set A 3-inch square Basic Set

Set B

Set D 4-inch Square Basic Set (8 Pieces)

Set F Sunburst Block (5 Pieces) (2 sets)

Set H Large Hexagons Plus (3 Pieces) (2 sets)

Set K Schoolhouse

Set L 12" Seven-Patch Block Set

Set N Mini Geometrics (5 Pieces)

Set P Perfect Patchwork Templates (5 Pieces) (2 sets)

### Marti Michell - Patterns

60 of One, Half a Dozen of Another

Apple Cores

Bali Breezes

Columbus Square

Fat Quarters Log Cabin

High Flyer Kites

Inner City Wallhanging

I Spy - One is Not Enough

Lazy Afternoon

Radiant Unfeathered Stars

Scrappy Bear's Path & More

Seven Sisters

Sunburst Quilts to Make

Twinkling Star

Winding Ways (2)

Zig Zag Geese

The Perfect Patchwork System Volume 1

The Perfect Patchwork System Volume 2

The Perfect Patchwork System Volume 6

90 Degree Double Strip Ruler (Creative Grids)

Easy Six Ruler

Easy Half Square Triangles Template (Sewing with Nancy)

Fantastic Fan

Flag Day Tumbler Template & Fruit Punch Quilt Pattern

Fun and Done Batting Buddy: Chit Chat, Easy Diamonds,

Fast Lane, & Woven Wonder patterns

Joseph's Coat Templates & Today's Quilter magazine

Log Cabin Hexagon Tool

Quilters Apothecary Mystical Designer

Quick Points Ruler 1 Inch

Quick Points Ruler 1 1/2 inch

QuickStar by Judy Martin

Quilters Strip Ticket Bias Tube Construction and Yardage Tables

Shortcut Binding Tool

Tri-Recs Tools set of 2 (Darlene Zimmerman)

Wheel of Mystery Pattern and templates

Zig Zag Ruler & Windy Day and Diamond Trip patterns

### NOT FOR CHECK OUT - USE AT SIT AND SEWS ONLY

12 1/2" Square Sullivan's Edge

Omnigrd

2 1/2" Square

4" Square

6" Square (3)

6" x 24" (2)

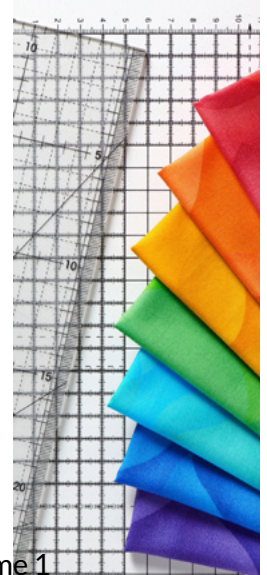
1" x 12"

Half Square triangle

Omnigrd 3 1/2" Square

Artstick Expandable yardstick

6" Add an Eighth



## COMMITTEE CHAIRS:

<b>Charitable Projects</b>	
Carol Downey	309-236-3886
<b>Community Education</b>	
Diana Engelbrecht	563-370-4239
Gail Ethier	858-776-1328
<b>Cuddle (Doll) Quilts</b>	
Deb Schladt	309-786-4387
Margaret Paulos	563-323-5745
<b>Doohickey Drawing</b>	
<b>Afternoon:</b>	
Mary Beth Hansen	563-381-2495
<b>Evening:</b>	
Linda Lindy	309-235-5355
<b>FYI Board</b>	
<b>Afternoon:</b>	
Julie Gray	309-781-1975
<b>Evening:</b>	
Maureen Conrad	563-940-5921
<b>Garage Sale</b>	
Kathee Secor	309-781-7886
<b>Guild Challenge</b>	
Jo Noon	563-271-0316
<b>Hostess/Greeter</b>	
<b>Afternoon:</b>	
Jo Noon	563-271-0316
<b>Evening:</b>	
Donna Lanman	563-343-3224
<b>Habitat for Humanity</b>	
René Robinson	309-738-3266
<b>Historical Interest</b>	
Catherine Litwinow	563-332-8588
<b>Library</b>	
Cindy Anderson	309-798-4473
Theresa Ralfs	563-370-3940
Paula Schumann	563-209-1451
<b>National Quilt Day</b>	
René Robinson	309-738-3266
<b>Quilt Show Chair</b>	
Peggy Fierst	507-513-3936
<b>Retreat</b>	
Pam King	309-737-9634
Mary Pement	309-797-6367
<b>Skill Builder Workshops</b>	
Denise Greer	309-269-0940
<b>Show &amp; Tell</b>	
Lois Kundel	563-370-0086
<b>Travel</b>	
Cathy Bennett	563-340-4479
<b>Guild Related Quilts of Valor</b>	
Terry Austin	309-912-1063

NOTE - Committee Chairs: If you have a schedule change, inform VP - Deb Schladt prior to the next month newsletter.\*Please do not contact facilities directly\*

## BOARD MEMBERS:

President, Diana Engelbrecht	563.370.4239
Vice President, Deb Schladt	309.781.9749
Secretary, Kathie Stockwell	309.737.9818
Treasurer, Cheryl Peck	319.269.6833
Program, Julia Warner	563.321.7572
Newsletter, Susan Nixon	816.830.4881
Historian, Sharon Milne	563.210.0027
Membership/Directory, DeLaine Lanman	563.343.3224
Member at Large, Dawn Thompson	563.349.1853
Member at Large, Kathee Secor	309.781.7886
Webmaster, Michelle Bailey	563.505.2519

The Mississippi Valley Quilters Guild is a non-profit organization open to anyone interested in quilts or quilting. Monthly meetings are 1 p.m. and 7 p.m. on the first Tuesday of each month at the First Congregational Church 2201 7th Ave, Moline, IL. Guests are welcome.

A \$5 fee is charged to guests at meetings with featured speakers.

\$35 yearly dues are renewable in September.

To change your address contact  
DeLaine Lanman 563-343-3224.

Find us online at: [www.mvqg.org](http://www.mvqg.org)

[www.facebook.com/mvqguild](http://www.facebook.com/mvqguild)

MVQG Email: [mvqg@mvqg.org](mailto:mvqg@mvqg.org)

Newsletter submissions:

Contributions to the Newsletter are welcome. Articles and ads are due no later than the second Friday of each month and can be submitted to Susan Nixon at:

[newsletter@mvqg.org](mailto:newsletter@mvqg.org)

All contributions must be accompanied by the name and phone number of the author.

Advertising rates

Prepay 5 issues and get the 6th issue free

\* Business card \$5.00      \* 1/4 page \$12.50

\* 1/3 page \$15.00      \* 1/2 page \$25.00

### OUR MISSION:

Organized in 1983 to educate and encourage members in the quilting arts; to encourage high standards in color, design, and construction of the quilted medium, and to stimulate interest in quilting in the community.

# Upcoming Member Opportunities.

## All are welcome!

### Pin Pal Quilters

June LeBow 309-519-3889

This group meets on the fourth Tuesday of each month from 9:00am to 3:00pm at the Butterworth Education Center, 701 12th Avenue, Moline. We work on our own projects so you must bring everything you will need. Any guild member is welcome. Bring your sewing machine or handwork. All fiber embellishment work welcome: beading, knitting, embroidery, and anything else fiber related. Large tables are available to baste and mark quilts.

### Charity Quilts

Carol Downey 309-236-3886

Charity Quilts Day is held the second Thursday of the month, 9:00am to 3:00pm Deere-Wiman Carriage House, 817 11th Ave., Moline unless otherwise noted in the calendar.

### Quilt Queens

Deb Daniel 563-349-7115

This Sit-n-Sew group meets every third and fourth Thursday, 9:00am to 3:00pm, Eastern Avenue Library, 6000 Eastern Ave., Davenport.

Just bring your lunch and enjoy the day!

Join Quilt Queens for Breakfast on the second Thursday of each month. Meet at Village Inn, 53rd & Elmore, Davenport, IA. 9am. RSVP Contact Judy Nelson for your spot! Everyone is welcome.

### Fairmount Library Sit-N-Sew

Diana Engelbrecht 563-370-4239

3000 N Fairmount Street, Davenport.

Please come and bring a friend.

On the third Friday of the month 9:00am to 3:00pm

### Cuddle (Doll) Quilts

Deb Schladt 309-786-4387

& Margaret Paulos 563-323-5745

Cuddle quilts are small quilts made by members and given to Head Start and selected preschool programs. Come to the workday, 3rd Tuesday most months at the Deere Wiman Carriage House, 817 11th Ave., Moline, 9:00am to 2:00pm, to plan, cut and sew with donated fabric, about 24" square. Donations always welcome. Quilts are distributed by December guild meeting.

### Quilt Get Away

Denise Greer 309-269-0940

If you have projects to finish - Quilt Getaway is the place for you and open to all guild members. We meet at Butterworth Education Ctr., 701 - 12th Ave, Moline unless otherwise noted, from 9:00am to 4:30 Friday, 9:00am to 7:00pm Saturday the first Friday and Saturday of the month. Stay all day or leave your things and come and go as you like. Microwave and refrigerator are available. You may want to bring a light and an extension cord. **Please remember - do not come before 900am.**

### Quilts of Valor

Terry Austin 309-912-1063

Make quilts to honor our veterans. Quilts of Valor group meets on the Wednesday following the Guild meeting, 9:00 to 2:00pm, Heritage Church, 4801-44th St. Rock Island.

### Fiber Arts

Colleen Curry 563-285-1305

The Fiber Arts group meets on the second Tuesday, Eastern Ave. Library, 6000 Eastern Ave., Davenport Inspire and Create 9:00am to 3:00pm

Mini Workshop 9:30am to 12:00pm

Fiber Arts Meeting 1:00pm to 3:00pm

The room will be open from 9:00am to 3:00pm for Inspire and Create time for anyone who would like to work on any non messy project of their choice. The Mini Workshops provide a time to learn a variety of new techniques. Demos, information and show and tell from 1pm to 3pm. Any sewing machines will be asked to stop during the meeting. It will be an open creative time for all fiber mediums.

### Virtual Sit-N-Sew

Jane Darin 309-523-3296

Karla Miley 309-738-5227

Held via Zoom every third Monday, 1:00-4:00pm

Contact Jane or Karla by 12 noon the Sunday before.

### Mod Squad Quilters

Vicky Morrow 309-948-3066

Susie Goodley 309-786-7229

Karla Miley 309-738-5227 T

Our new sit-and-sew for members interested in Modern Quilting. Mod Squad meets on the third Thursday 6:30 pm at the Parish Hall at St. John's Lutheran Church 4501 7th Ave, Rock Island

### Scott County Library Sit-N-Sew

Deb Daniel 563-349-7115

200 N 6th Ave., Eldridge. Please come and bring a friend. The Second Wednesday of the month 9am to 3pm

**\*\*Date fluctuates due to Library's schedule.**

