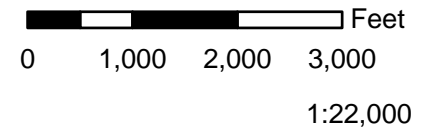
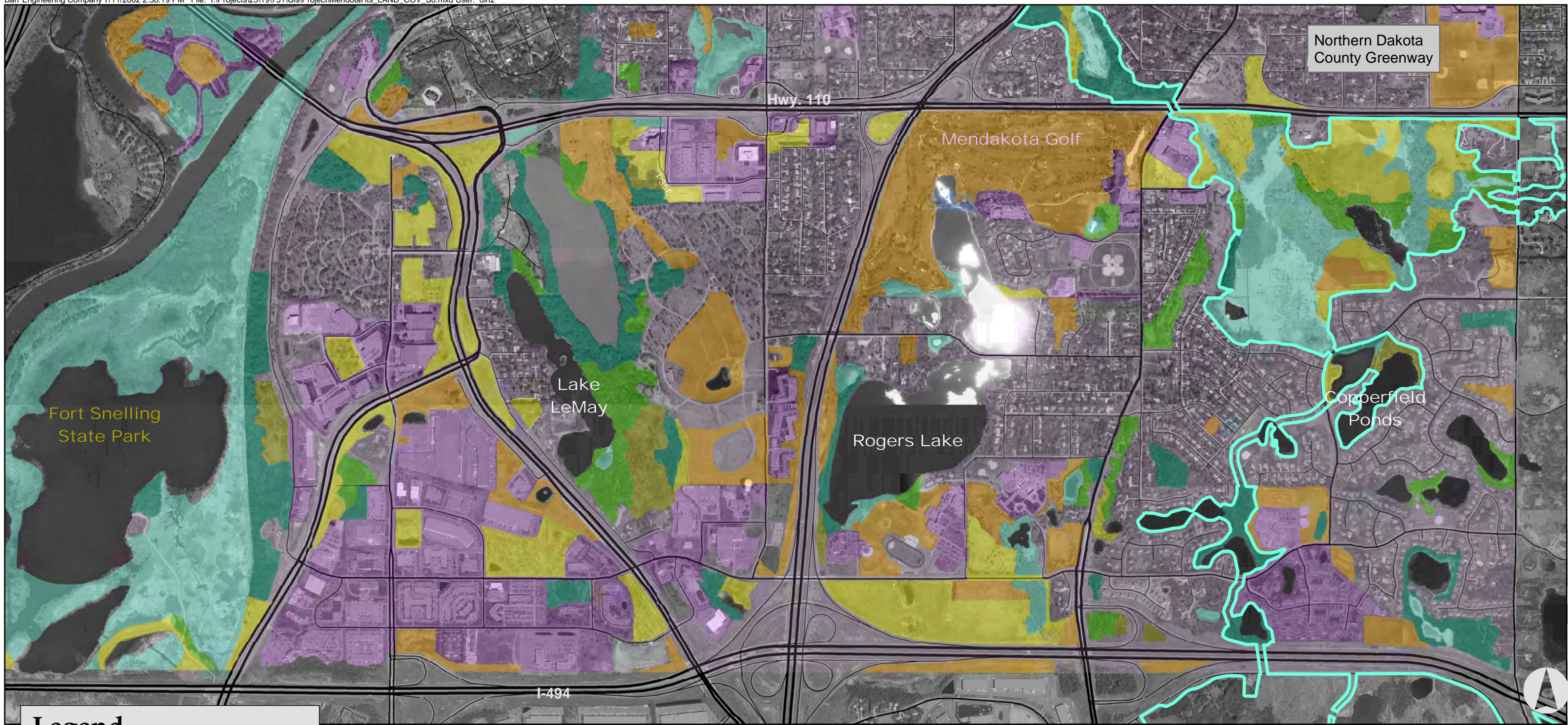


Legend

- Starting point
- Northern Dakota County Greenway
- City-owned parcels
- Natural or semi-natural area
- Planted area or other green space
- Less degraded, most restorable plant communities





Legend

- Northern Dakota County Greenway
- 4% to 50% impervious cover
- More than 50% impervious cover
- Cultivated or planted
- Forests
- Woodland
- Shrubland
- Herbaceous vegetation
- Wetland

500 0 500 1,000 Feet

1:16,000



Mendota Heights
Natural Resources

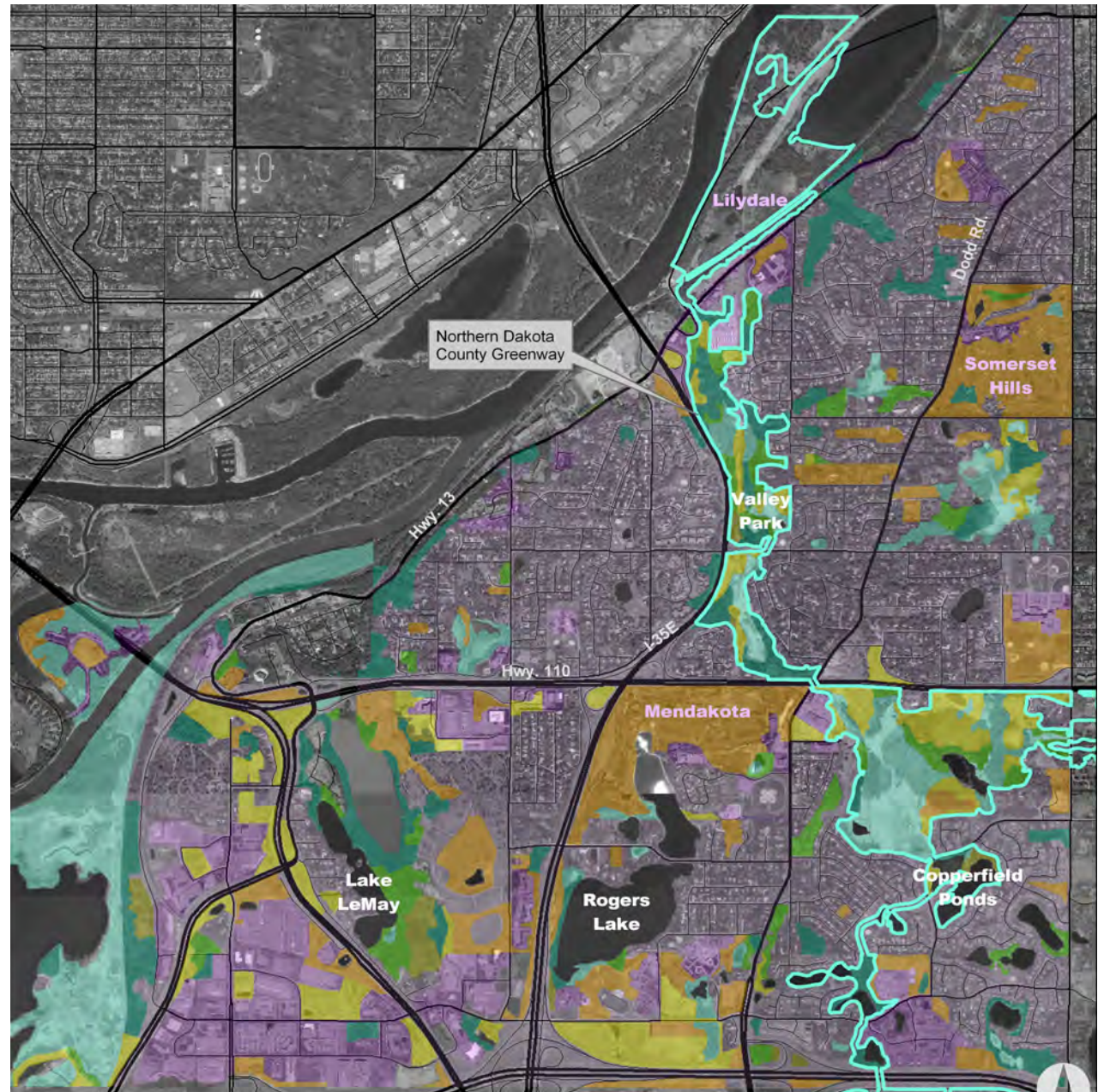
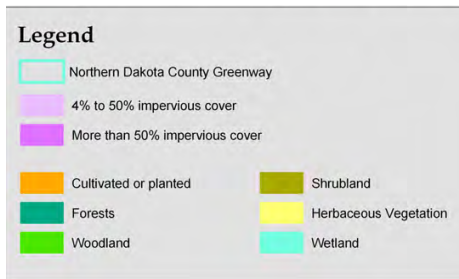
Quality of Life

Well-managed natural areas:

- Are beautiful to look at
- Help maintain water quality
- Provide habitat for wildlife
- Offer residents daily contact with nature
- Raise property values

Land Cover

- 70% Impervious
- 15% Wetland (incl. state park)
- 11% Cultivated vegetation
- 6% Upland Forest



Invasive Species

- Buckthorn
- Focus on highest-quality areas first
- Education and volunteer efforts
- Financial and other partnerships

