



Fellow Cattlemen,

Greetings from SE South Dakota. It sure has been a much different year than the past two. We are so thankful for our many blessings, a favorable weather pattern and the cattle that we are so passionate about. With that we welcome you to the kickoff of our sales year here at Section 16 Cattle Co., Mettler Angus and CB4 Cattle Co.

This year we decided to feature our sale animals a little earlier as we get out and talk to our customers about what we have to offer their herds this coming year. As in the past years we will be offering for sale a group of cattle at The I29 Bull Run which will be held March 13, 2021, at the EXPO Building in Sioux Falls, SD. We also will have a group of Private Treaty animals for sale season long until they are all gone.

This catalog will include all of the animals we will be selling this coming sale season, both at The Bull Run and Private Treaty.

The animals in this catalog represent the effort of three really strong operations and two solid partnerships.

Jerry and Di Mettler have developed a top notch herd of Angus cows over the past 12 years. A few years back they approached us at Section 16 with the once in a lifetime opportunity to partner with them on their Angus operation. We are now into our second year of this partnership, and we are very excited about the opportunities it not only offers each of our programs, but mostly what it offers our customers.

Craig, Amy, Maddox and Graham Broughton have been active in the Hereford breed over the past ten years. They have a long partnership with us at Section 16 Cattle Co. on a select group of Hereford females that is growing each year. I thank the Broughtons for being such a great family to work with and for putting together such a great group of cows.

Thanks so much to all our past customers for all their support. We always look forward to working with new customers along the way, but especially enjoy helping our return buyers find animals that fit their program and help them grow better beef.

We continue to offer Free Care until May 1st, Free Delivery within 200 miles, a first breeding season guarantee, and a volume purchase discount. So Buy With Confidence!

We are open seven days a week and enjoy nothing more than visitors. Stop by anytime to take a look at what we have to offer and enjoy some good cattle fellowship.

Thanks,

Erik



**Erik, Kade, & Delaney Scott**

47881 287th St. – Canton, SD 57013

605-214-1332

email: section16cattleco@live.com

www.section16cattleco.com



Craig Broughton  
2505 Big Bear Circle  
Sedalia, CO 80135  
605-951-7595



**Jerry Mettler**  
605-987-2114  
jmettler@valyousat.net  
Canton, SD

## ~ HEREFORD BULLS ~

**167H S16 CB4 8042 33Z 167H**

BD: 2/2/20

Reg. No. P44159641

TH 122 711 VICTOR 719T

**JDH VICTOR 719T 33Z ET**

JDH MS YANKEE

NJW 135U 10Y HOMETOWN 27A

**GENOA MISS 27A HOMETOWN 18042**

GENOA MISS VISIONARY 14013

BW	72
ADJ WW	680
ADJ YW	

EPDs	CED	BW	WW	YW	Milk
	7.1	0.9	60	99	29

A finely bred calving ease, Low BW bull with a bunch of performance behind him. 167H is very deep, travels well and has pigment in both eyes. Suitable for Heifers. Find 719T in the pedigree -- time honored patriarch.

**177H S16 GG 125F 784 177H**

BD: 2/25/20

Reg. No. P44159664

**ILR 4007 DUTY 784 ET (REF SIRE)**

ILR RED POWER 456B

**S16 KCS MISS 1206 456B 125F**

LHF SUZIE CUE 981

BW	83
ADJ WW	624
ADJ YW	

EPDs	CED	BW	WW	YW	Milk
	-2.8	3.2	59	91	29

A very deep sided heavy muscled bull out of a really nice Red Power daughter. These 784 calves really have some added depth. Will add muscle and growth to your calves.



**JDH MS RIBEYE 10Z ET**  
Grandam of 186H

**198H S16 5051 6119 198H**

BD: 4/2/20

Reg. No. 44159678

DM BR SOONER

**ILR 1L SOONER 6119 ET**

DJB 46B BETH 1L

NJW 765 P20 BEEF 36W ET

**EXR 3203 38W MAUDIE 5051**

WPF 43X 174 BONNIE 3203 ET

BW	81
ADJ WW	598
ADJ YW	

EPDs	CED	BW	WW	YW	Milk
	4.4	2	43	70	31

Something new for us with 6119 but man does he add MUSCLE!!!! You will for sure notice him walking through the pen. The youngest bull but one of the biggest.

**186H S16 131F 784 186H**

BD: 3/5/20

Reg. No. P44159669

**ILR 4007 DUTY 784 ET (REF SIRE)**

ILR RED POWER 456B

**S16 MISS 10Z 456B 131F**

JDH MISS RIBEYE 10Z ET

BW	89
ADJ WW	590
ADJ YW	

EPDs	CED	BW	WW	YW	Milk
	-4.8	4.5	64	98	36

Another one of these thick deep sided Duty's that will add mass, muscle and performance to a calf crop along with making great replacement heifers.



**ILR RED POWER 456B**



# ~ HEREFORD BULLS ~

**171H**

**S16 109F 84E 171H**

BD: 2/14/20

Reg. No. P44159641

**S16 782B HIGHLAND 84E** (REF SIRE)

ILR RED POWER 456B

**S16 DD MISS 71D 456B 109F**

S16 LHF 1251 MS REDEYE 71D

BW	72
ADJ	
WW	541
ADJ	
YW	

EPDs	CED	BW	WW	YW	Milk
	12	-5	52	82	25

A compact heavy muscled Highland son that is in top 5% in CE and BW. 171H has quite a story and I promise will work extra hard for his new owners. Suitable for Heifers.

**174H**

**S16 133F 84E 174H**

BD: 2/20/20

Reg. No. P44159657

**S16 782B HIGHLAND 84E** (REF SIRE)

ILR RED POWER 456B

**S16 MISS 99U 456B 133F**

FHF 51S RITA 91U

BW	76
ADJ	
WW	621
ADJ	
YW	

EPDs	CED	BW	WW	YW	Milk
	8.7	1.1	61	95	29

A soggy, heavy muscled, dark red, short marked, goggle eyed Highland son out of a female we are very excited about. Suitable for Heifers. Keeping 1/3 interest.



"HIGHLAND"



"Discussing Who's The Best?"

**173H**

**S16 118F 84E 173H**

BD: 2/19/20

Reg. No. P44159656

**S16 782B HIGHLAND 84E** (REF SIRE)

ILR RED POWER 456B

**S16 MISS 5369 456B 118F**

LMS FRECKLES 5369

BW	79
ADJ	
WW	586
ADJ	
YW	

EPDs	CED	BW	WW	YW	Milk
	8.3	0.3	52	81	25

A very dark red, short marked, goggle eyed Highland son out of a first calf heifer we are very excited about. Suitable for Heifers.



ILR RED POWER 456B

**07G**

**CB4 S16 GATSBY 07G**

BD: 10/5/19

Reg. No. P44088548

Fall Bull

**S16 782B HIGHLAND 84E** (REF SIRE)

CHURCHILL RED BULL 200Z

**S16 KCS MS RED BULL 52D**

AH VIOLA RUMBLE 139B

BW	72
ADJ	
WW	700
ADJ	
YW	993

EPDs	CED	BW	WW	YW	Milk
	7.7	0.7	49	89	25

An awesome fall aged Highland from our partners at CB4. He is about an exact clone of his Daddy. Suitable for Heifers.



CHURCHILL RED BULL 200Z

# ~ HEREFORD BULLS ~

## 188H S16 9A 394A 188H

BD: 3/9/20

Reg. No. P44159765

**ILR PEACE OF MIND 394A ET** (REF SIRE)

LHF REDEYE 1129

**S16 LHF DELANEY 9A**

THR MISS THOR 1251Y

BW	62
ADJ WW	566
ADJ YW	

EPDs	CED	BW	WW	YW	Milk
	15.7	-3.1	42	60	31

Dark red, heavy pigment, Calving Ease, can't miss Dam is the best way to explain the 188H bull. His dam has raised some good ones and did again this year.

## 195H S16 49C 394A 195H

BD: 3/26/20

Reg. No. P44159767

**ILR PEACE OF MIND 394A ET** (REF SIRE)

LHF REDEYE 1129

**S16 LHF 24Y MISS RED EYES 49C**

JDH MS 117R RIBEYE 24Y ET

BW	74
ADJ WW	479
ADJ YW	

EPDs	CED	BW	WW	YW	Milk
	9.3	0	52	78	33

Another heavy pigmented calving ease heifer bull with a bunch of great females in his pedigree. Suitable for Heifers.

## 197H S16 43C 510 197H

BD: 3/31/20

Reg. No. P44159677

**ESF 10Y HOMETOWN 510 ET** (SEE 179H)

LHF REDEYE 1129

**S16 53U MISS HIGHLAND 43C**

FHF 0343 RUTH 53U

BW	78
ADJ WW	587
ADJ YW	

EPDs	CED	BW	WW	YW	Milk
	7.1	1.5	51	76	30

197H has been a favorite all year out of one of our best cows and cow families. His dam 43C does it every year and didn't disappoint this year.

## 179H S16 R5214 510 179H

BD: 2/29/20

Reg. No. P44159666

NJW 73S W18 HOMETOWN 10Y ET

**ESF 10Y HOMETOWN 510 ET**

K LADY RIBEYE 3142

K 88X RIBEYE 383

**L383 MS RIBEYE R5214**

L=MS 813 DOMINO 2248Z

BW	71
ADJ WW	565
ADJ YW	

EPDs	CED	BW	WW	YW	Milk
	11.3	-0.1	46	70	32

Has been a standout all year in the pasture and still is in the development pen. Lots of muscle and mass with bonus calving ease and low BW. Suitable for Heifers.

## 185H S16 CB4 9120 394A 185H

BD: 3/5/20

Reg. No. P44159764

**ILR PEACE OF MIND 394A ET** (REF SIRE)

ALH 034 PLATO DOM 0424

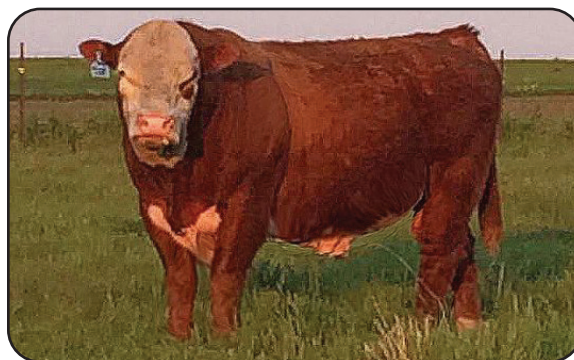
**GRANDVIEW CMR LADY DOM 9120**

GRANDVIEW CMR 0064

BW	67
ADJ WW	498
ADJ YW	

EPDs	CED	BW	WW	YW	Milk
	11.7	-2.5	43	62	32

Calving ease on calving ease with this Peace Of Mind son. If you need a sleep all night heifer bull with great maternal traits, this is your guy. Suitable for Heifers.



LHF REDEYE 1129



FHF 0343 RUTH 53U



"Find Comfort With Your Purchase"





**Erik, Kade, & Delaney Scott**

47881 287th St. – Canton, SD 57013

605-214-1332 | section16cattleco@live.com

www.section16cattleco.com

**VISITORS WELCOME**

★ **ALL SALE CATTLE ARE ON DISPLAY** ★  
**AT SECTION 16 CATTLE CO.**

**PRIVATE TREATY**  
**★ SALES ★**  
**AVAILABLE**



**ANGUS**



**HEREFORD**

★ *Committed to Excellence* ★

**~ REFERENCE SIRE ~**

**S16 7828 HIGHLAND 84E**

BD: 2/23/17

Reg. No. P43779333

TH 22R 16S LAMBEAU 17Y

NJW 98S R117 RIBEYE 88X ET

**TH 904 17Y LAMBEAU 148B**

**RANGELINE 511X MOLASSES 782BET**

TH BON 45P GEMINI 90U

TH 122 711 DOMINETTE 511X ET

CED	BW	WW	YW	SC	MILK	CW	MARB	RE	BMI\$	CHB\$
13.8	-.6	56	92	+1.4	50	74	.22	.64	389	130

*Sire of Lots: 171H, 173H, 174H, 07G. Highland's grandsire 17Y has long been a Genex standout for calving ease, udder quality and dark pigmentation!*



**ILR 4007 DUTY 784 ET**

BD: 11/1/17

Reg. No. P43889134

NJW 67U 28M BIG MAX 22Z

NJW 98S R117 RIBEYE 88X ET

**NJW 79Z 22Z HEAVY DUTY 72C ET**

**H MS 5139 ADVANCE 4007 ET**

BW 91H 100W RITA 79Z ET

HH MISS ADVANCE 5139R ET

CED	BW	WW	YW	SC	MILK	CW	MARB	RE	BMI\$	CHB\$
.8	3.2	62	93	+1.0	36	57	.05	.45	413	94

*Sire of: 177H, 186H.*



**ILR PEACE OF MIND 394A ET**

BD: 11/20/13

Reg. No. P43492874

UPS DOMINO 3027

EFBEEF SCHU-LAR PROFICIENT N093

**CHURCHILL SENSATION 028X**

**KCF MISS PROFICIENT U201**

CHURCHILL LADY 7202T ET

KCF MISS 774 L82

CED	BW	WW	YW	SC	MILK	CW	MARB	RE	BMI\$	CHB\$
12	-2.7	48	70	+1.7	37	54	.19	.39	532	108

*Sire of Lots: 185H, 188H, 195H.*



# ~ ANGUS BULLS ~ FALL BORN AGE-ADVANTAGED ~

**9330**

**516 MA QUARTERBACK 9330**

BD: 8/6/19

Reg. No. 19845608

**S A V QUARTERBACK 7933** (REF SIRE)

TR MR OBJECT 0109X

**TR MS BARBIE 2129Z**

TR MS BARBARA 8170U

BW	82
ADJ WW	844
ADJ YW	1252

EPDs	CED	BW	WW	YW	Milk
	-1	3.7	81	132	21

- Exceptional performance spread from birth to weaning. Outstanding EPD profile.
- A realistic option for performance driven herds.



\* Dam of "RANCH KING"  
\* Granddam of "QUARTERBACK"

**9310**

**S16 MA TARGET 9310**

BD: 7/27/19

Reg. No. 19841657

**TR MA TARGET 7128** (REF SIRE)

TR VALIDATE A3005

**METTLERS MS VALIDATE 5109**

METTLER IN REACH 3101

BW	73
ADJ WW	808
ADJ YW	1227

EPDs	CED	BW	WW	YW	Milk
	+6	2.3	68	124	29

Only Target son in the offering but being used heavily this fall as we want to perpetuate his calving ability, easy fleshing, and soundness.



**WAR BULLET PROOF C357**  
Sire of: TR MA TARGET 7128E

**9321**

**S16 MA COPPER MTN 9321**

BD: 8/2/19

Reg. No. 19841661

**SAV COPPER MOUNTAIN 1389** (REF SIRE)

GAR PREDESTINED

**METTLERS MS PREDESTINED 8004U**

H MAN BEXTOR 4015

BW	84
ADJ WW	812
ADJ YW	1124

EPDs	CED	BW	WW	YW	Milk
	+4	2.8	54	95	26

This is the very last "Copper" calf to be offered -- the semen is gone! Simply loads of potential available to you with the genetics 9321 offers!



"4112" Heifer sired by "COPPER"  
sold for \$10,600 -- out of 8004U Dam

**9311**

**S16 MA PRIME CUT 9311**

BD: 7/29/19

Reg. No. 19841658

**HA PRIME CUT 4493** (REF SIRE)

BALDRIDGE NEBRASKA 901

**MA MS NEBRASKA 6120**

METTLER MS DOC 4101

BW	76
ADJ WW	879
ADJ YW	1181

EPDs	CED	BW	WW	YW	Milk
	+9	2.1	61	102	23

Calving ease, performance, carcass -- that rather sums it up for 9311. His sire continues to produce high selling bulls in high profile sales.



**SAV BLACKCAP MAY 4136**  
Generated Multi-Millions in Revenue!!!  
Dam of "Copper" and Renown



# ~ FALL BORN AGE-ADVANTAGED ~ ANGUS BULLS ~

**9339**

**S16 MA CASHED IN 9339**

BD: 8/11/19

Reg. No. 19841656

**STYLES CASHED IN S8** (REF SIRE)

SAV INTERNATIONAL 2020

**STYLES POWERMAKER V601**

STYLES POWERMAKER K19

BW	84
ADJ WW	822
ADJ YW	1152

EPDs	CED	BW	WW	YW	Milk
	+7	2.5	65	118	23

Great spread from birth to weaning. 9339's sire sold for \$235,000 and I'm sure the semen supply is exhausted!! Here's a sure shot herd sire. Dam is destined for Donor pen!



**"V601" Dam of 9339 – She's Special!**

**9331**

**S16 MA LEXICON 9331**

BD: 8/6/19

Reg. No. 19841662

**TR MA LEXICON 7001E** (REF SIRE)

CONNEALY REVELATION 2353

**MA MS REVELATION 701**

METTLERS MS RANCH KING 5124

BW	69
ADJ WW	859
ADJ YW	1291

EPDs	CED	BW	WW	YW	Milk
	+10	1.0	62	113	28

Unquestionably Lexicon is phenotypically and structurally the BEST herd bull to walk our pasture. Calving ease with reliable predictable performance. Watch for several Lexicon sons in future sales! Daughters are sweet!!



**GDAR LEUPOLD -- Sire of LEXICON**

**9318**

**S16 MA TUNDRA 9318**

BD: 8/1/19

Reg. No. 19841660

**BUSHES TUNDRA 602** (REF SIRE)

SAV RANCH KING 2463

**METTLERS MS RANCH KING 5127**

TR MS BLACK ROSE 7204T

BW	87
ADJ WW	725
ADJ YW	1066

EPDs	CED	BW	WW	YW	Milk
	+7	3.4	52	104	26

Ranch King daughters have been the "3P" kind -- productive, performance; profitable! They bring home a good one every year.



**SAV RANCH KING -- Dam is 5530  
(See Lot 9330)**

**9338**

**S16 MA TUNDRA 9338**

BD: 8/11/19

Reg. No. 19841663

**BUSHES TUNDRA 602** (REF SIRE)

TR MR FINAL ANSWER 9046W

**METTLER MS FINAL ANSWER 3113**

METTLER MS BIG EYE 0346X

BW	81
ADJ WW	764
ADJ YW	1215

EPDs	CED	BW	WW	YW	Milk
	+10	1.4	65	109	26

If you are looking to breed some replacement heifers, this well bred bull could easily fill your needs without sacrificing performance.



**SAV FINAL ANSWER -- Grandsire of 9338**

# ~ FALL AND SPRING BORN ~ ANGUS BULLS ~ (and one lonely Balancer Bull)

## 9319 S16 MA TUNDRA 9319

BD: 8/2/19 HB/HP (75% AN, 25% GV) Balancer

BUSHES TUNDRA 602 (REF SIRE)

PLAINVIEW SUNDANCE G39

LLJ METTLERS MS SUNDANCE A302

LLJ METTLER COW S635

BW	86
ADJ WW	820
ADJ YW	1236

EPDs	CED	BW	WW	YW	Milk
	+2	2.6	70	113	24

Only Balancer in sale but more to come in the future. Larger framed Tundra son but packed with beef front to back! He's a herd changer. Crossbreeding made easy.

## 9317 S16 MA TUNDRA 9317

BD: 7/31/19 Reg. No. 19841659

BUSHES TUNDRA 602 (REF SIRE)

WX DOC 2379

METTLERS MS DOC 4101

METTLERS MS SUNDANCE 0311X

BW	79
ADJ WW	735
ADJ YW	1077

EPDs	CED	BW	WW	YW	Milk
	+7	2.6	52	105	24

Balanced composition, eye appealing well muscled, grandson of the distinguished Basin Excitement stud sire!

## 9342 S16 MA TUNDRA 9342

BD: 8/18/19 Reg. No. 19841664

BUSHES TUNDRA 602 (REF SIRE)

PVF INSIGHT 0129

MA MS INSIGHT 6129

TR MS LASSIE 7208T

BW	79
ADJ WW	802
ADJ YW	1101

EPDs	CED	BW	WW	YW	Milk
	+7	1.9	58	102	23

All of these fall bulls are cared and fed for longevity so that your investment has profit potential. Sell more pounds from every bull!

## 010 S16 MA RENOWN 010

BD: 3/1/20 Reg. No. 19866605

SAV RENOWN 3439

MA RENOWN 7312 (REF SIRE)

METTLER MS ERICA 9007W

PVF INSIGHT 0129

MA MS INSIGHT 707

METTLERS MS COPPER MTN 4106

BW	71
ADJ WW	757
ADJ YW	

EPDs	CED	BW	WW	YW	Milk
	-1	3.3	59	106	22

Renown, Insight, and "Copper" -- you talk about credentials, 010 is packin' 'em! Nice young sire with big time potential.

## BALANCER®

### WHAT IS A BALANCER®?

It is an **official trademark** issued to the AGA. Balancer® cattle contain 25% to 75% Gelbvieh and 25% to 75% Angus or Red Angus with a maximum of 1/8 unknown or other breed genetics. Both sire and dam must be recorded by an officially recognized breed association with a minimum of 75% of the pedigree documented.



BASIN EXCITEMENT -- Sire of "TUNDRA"



PVF INSIGHT 0129 -- Grandam of 9342 and 010!

## 014 S16 MA RENOWN 014

BD: 3/18/20 Reg. No. 19882186

MA RENOWN 7312 (SEE 010)

SAV RANCH KING 2463

METTLERS MS RANCH KING 6123

TR MS EDITH ERICA 7220T

BW	83
ADJ WW	6458
ADJ YW	

EPDs	CED	BW	WW	YW	Milk
	0	3.6	51	95	2.5

Once more, two of the most revered females in the Angus breed, 4136 and 5530, can be found in this "complete" bull package.



# ~ YEARLING ANGUS BULLS ~

**001**
**S16 MA TUNDRA 001**

BD: 1/27/20

Reg. No. 19866603

**BUSHS TUNDRA 602** (REF SIRE)

VAR GENERATION 2100

**MA MS GENERATION 719**

METTLERS MS BIG EYE 0334X

BW	81
ADJ WW	718
ADJ YW	

EPDs	CED	BW	WW	YW	Milk
	8	2.0	66	110	25

The "combination kind!" Combines balance, stoutness, phenotype and quality. Performance equals profitability. Nice WW's -- and NO CREEP!

**012**
**S16 MA RENOWN 012**

BD: 3/6/20

Reg. No. 1986660

**MA RENOWN 7312** (SEE 010)

SAV PRIORITY 7283

**METTLERS MS PRIORITY 4104**

METTLERS MS WHISP WIND 2101

BW	82
ADJ WW	750
ADJ YW	

EPDs	CED	BW	WW	YW	Milk
	-1	3.3	64	108	21

Yet another blend of some great Angus proven genetics -- the 4136 and 5530 cows!! GENETICS + MOMMA'S MILK = PERFORMANCE.

**006**
**S16 MA TUNDRA 006**

BD: 2/11/20

Reg. No. 19866604

**BUSHS TUNDRA 602** (REF SIRE)

SAV RANCH KING 2463

**MA MS RANCH KING 725**

METTLERS MS FINAL ANSWER 3113

BW	75
ADJ WW	694
ADJ YW	

EPDs	CED	BW	WW	YW	Milk
	7	2.4	65	111	27

Nice blend of calving ease and performance genetics. Easy moving, deep ribbed, and heavy muscled rear end.

**015**
**S16 MA RENOWN 015**

BD: 3/18/20

Reg. No. 19866606

**MA RENOWN 7312** (REF SEE 010)

SAV RENOWN 3439

**MA MS RENOWN 723**

METTLERS MS BIG EYE 0359X

BW	75
ADJ WW	730
ADJ YW	

EPDs	CED	BW	WW	YW	Milk
	-1	2.9	60	106	22

Double bred Renown influenced bull that puts it all together in a balanced, nicely patterned bull.

## ANGUS ~ YEARLING ~ HEIFERS

These heifers exemplify the epitome of structural and genetic excellence. Be confident that these young females offer predictable success in whatever your plans may be for them. Whether it be conformation, performance, muscle pattern or structural integrity, they simply have it all!

**H03**
**S16 MA MS HIGH POINT H03**

BD: 1/3/20

Reg. No. 19891780

**JK HIGH POINT 745** (REF SIRE)

SAV RENOWN 3439

**MA MS RENOWN 712**

METTLERS MS LASS 9010W

BW	74
ADJ WW	603
ADJ YW	

EPDs	CED	BW	WW	YW	Milk
	+7	.7	68	119	23

Her dam, 712, is a building block for furthering any program. Super complete and structurally balanced!

**H05**
**S16 MA MS HIGH POINT H05**

BD: 2/9/20

Reg. No. 19876576

**JK HIGH POINT 745** (REF SIRE)

STYLES CASHED IN S8

**MA MS CASHED IN 6109**

METTLERS MS ELBA 9006W

BW	77
ADJ WW	557
ADJ YW	

EPDs	CED	BW	WW	YW	Milk
	+10	1.1	67	120	23

Volume galore with this special mating! Functional super balanced, wide based, and feminine, SPECIAL!

# ~ ANGUS YEARLING HEIFERS ~

**H09**
**S16 MA MS RENOWN H09**

BD: 2/26/20

Reg. No. 19866609

**MA RENOWN 7312** (SEE 010)

SAV RANCH KING 2463

**METTLERS MS RANCH KING 5120**

METTLERS MS SUNDANCE 0311X

BW	84
ADJ WW	659
ADJ YW	

EPDs	CED	BW	WW	YW	Milk
	-2	3.5	56	101	23

Ranch King is blending the best of the two greatest cows at Schaff Angus -- 4136 and 5530! Halter quality!


**SAV RENOWN**

• Tremendous Influence in our Program!

**H13**
**S16 MA MS RENOWN H13**

BD: 3/7/20

Reg. No. 19866611

**MA RENOWN 7312** (SEE 010)

SAV RANCH KING 2463

**MA MS RANCH KING 732**

TR MS SNOW WHITE 6093S

BW	76
ADJ WW	807
ADJ YW	

EPDs	CED	BW	WW	YW	Milk
	-1	3.3	53	98	23

Another 4136/5530 blending of unique time honored genetic package. These are the kind to start a herd with.

**H02**
**S16 MA MS EASY DECISION H02**

BD: 1/27/20

Reg. No. 19876584

**BUSHES EASY DECISION 98** (REF SIRE)

STYLES CASHED IN S8

**MA MS CASHED IN 6114**

METTLERS KATINKA KAY 9022W

BW	67
ADJ WW	578
ADJ YW	

EPDs	CED	BW	WW	YW	Milk
	+7	2.4	63	119	23

Gather all the Cashed In influence daughters you can find 'cause they have future written all of them.

**H11**
**S16 MA MS RENOWN H11**

BD: 3/4/20

Reg. No. 19866610

**MA RENOWN 7312** (SEE 010)

SAV COPPER MOUNTAIN 1389

**METTLERS MS COPPER MTN 4114**

METTLERS MS BIG EYE 0327X

BW	81
ADJ WW	584
ADJ YW	

EPDs	CED	BW	WW	YW	Milk
	+3	2.1	52	93	22

A rare and unique commodity here -- a "Copper" influence female!! See photos of heifers by Copper on p. 6.


**"UPSTART 760"**

1st Dau's avg'd \$7,000 in Chestnut Sale

• Sire of H16's Dam -- Solid Females Here!

**H16**
**S16 MA MS RENOWN H16**

BD: 3/24/20

Reg. No. 19866612

**MA RENOWN 7312** (SEE 010)

CHESTNUT PF UPSTART 760

**METTLERS MS UPSTART 3128**

METTLERS SUNBEAM MS LUT 0328

BW	83
ADJ WW	648
ADJ YW	

EPDs	CED	BW	WW	YW	Milk
	+1	3.2	58	101	27

Her grandam, 0328, produced the Res. Champ Bull at BHSS & sold for \$10,000. Great granddam, C123 is Dam of the infamous "Lot" bull.


**METTLERS ANSWER MAN**

• BHSS Res. Champ Bull -- Dam was 0328



# ~ ANGUS REFERENCE SIREs ~

## S A V QUARTERBACK 7933

BD: 1/1/17

Reg. No. 18913003

S A V RESOURCE 1441

S A V FINAL ANSWER 0035

**S A V REGARD 4863**

**S A V BLACKCAP MAY 3525**

S A V BLACKCAP MAY 5530

S A V MAY 2397

CED	BW	WW	YW	SC	Milk	CW	Marb	RE	SW	SB
0	4.1	99	155	1.08	17	76	0.17	1.05	85	147

Expect high quality progeny with a fantastic look from this \$160,000 sire. **Sire of: 9330** – that exhibits breed leading growth and maternal function.



## TR MA TARGET 7128E

BD: 3/15/17

Reg. No. 18962757

KM BROKEN BOW 002

MOGCK BULLSEYE

**WAR BULLET PROOF C 357**

**TR MS MONTANA 4128B**

WAR FINAL ANSWER X020 U182

TR MS MONTANA POWER 0169X

CED	BW	WW	YW	SC	Milk	CW	Marb	RE	SW	SB
2	2.6	78	134	1.08	34	58	.79	.43	85	146

**Sire of: 9310** – Excellent numbers for growth, milk, and docility. Our herd bull that's thick butted, wide topped, soggy middled and still moves like a highly conditioned athlete. Heavy use here!



## HA PRIME CUT 4493

BD: 2/17/14

Reg. No. 17943466

TC FRANKLIN

HA PROGRAM 5652

**VERMILION SIRLOIN**

**HA MISS BLACKCAP 9127**

VERMILION LASS 8482

HA MISS BLACKCAP 1250

CED	BW	WW	YW	SC	Milk	CW	Marb	RE	SW	SB
10	1.8	74	123	1.2	24	46	.35	.88	73	138

**Sire of: 9311** – Prime Cut brings body capacity, substance of bone, and a beautiful profile. Sired many sale toppers this past year. Plan to use AI again for certain!



## BUSHS TUNDRA 602

BD: 1/25/14

Reg. No. 17952324

BASIN EXPEDITION R156

WMR TIMELESS 458

**BASIN EXCITEMENT**

**BUSHS LADY TIMELESS 2850**

BASIN LADY S532K

BUSHS LADY FREEDOM 9812

CED	BW	WW	YW	SC	Milk	CW	Marb	RE	SW	SB
10	2.4	75	123	1.42	26	46	.14	.17	77	98

**Sire of: 9317, 9318, 9319, 9338, 9339, 001, 006** – Fresh curve bending outcross genetics. Calving ease with a strong maternal punch. Medium frame size and huge bodied design.



## TR MA LEXICON 7001E

BD: 2/16/17

Reg. No. 18962454

AAR LEUPOLD 0578

VDAR REALLY WINDY 4097

**GDAR LEUPOLD 298**

**TR MS BLACKCAP 5118C**

GDAR MISS BLACKCAP 9232

TR MS BLACKCAP 2111Z

CED	BW	WW	YW	SC	Milk	CW	Marb	RE	SW	SB
13	.7	70	132	.55	27	68	.47	.89	70	162

**Sire of: 9331** – A featured sire in our program -- this bull is truly special! Definite calving ease that's the "combination kind." Combines balance, stoutness, phenotype, muscle pattern and quality.



# ~ ANGUS REFERENCE SIREs ~

## S A V COPPER MOUNTAIN 1389

BD: 1/7/11

Reg. No. 17016546

TC GRIDIRON 258

S A V 8180 TRAVELER 004

**S A V IRON MOUNTAIN 8066**

**S A V BLACKCAP MAY 4136**

S A V MADAME PRIDE 3249

S A V MAY 2397

CED	BW	WW	YW	SC	Milk	CW	Marb	RE	SW	SB
1	3.6	64	114	2.05	18	37	.20	.50	48	116

**Sire of: 9321** – A past herdsire of ours that's majestic with amazing style, shape, and quality. His dam, 4136, has literally produced millions of \$\$\$ in offspring.



## STYLES CASHED IN S8

BD: 2/1/14

Reg. No. 17869198

SITZ DASH

EXAR LUTTON 1831

**BARSTOW CASH**

**STYLES PRIDE P302**

BARSTOW QUEEN W16

PLAINVIEW PRIDE C123

CED	BW	WW	YW	SC	Milk	CW	Marb	RE	SW	SB
10	2.6	72	137	1.14	20	64	.79	.47	55	172

**Sire of: 9339** – When he sold for \$235,000 he possessed a rare blend of performance, power, soundness and style. Limited semen make his offspring a collector's item!



## BUSHS EASY DECISION 98

BD: 2/7/13

Reg. No. 17649083

S A V FINAL ANSWER 0035

BUSHS BIG TIME 452

**VIN-MAR O'REILLY FACTOR**

**BUSHS BIG BLACKBIRD 7885**

VIN-MAR EDELLA 2829

BUSHS DAKOTA BLACKBIRD 4763

CED	BW	WW	YW	SC	Milk	CW	Marb	RE	SW	SB
3	3.0	80	144	.70	21	63	.59	.79	65	162

**Sire of: H02 Heifer** – ED has elite EPDs and his cattle breed true with amazing high performance; early growth without excessive mature frame. Lead bull from 2014 NWSS Pen Bulls!



## JK HIGH POINT 745

BD: 1/9/17

Reg. No. 18793066

VIN-MAR JOHNNY CASH 3513

S A BROADSIRE 1411

**HIGH POINT RING OF FIRE 5071**

**JK BLACKBIRD 408**

HIGH POINT BLACKBIRD 3009

JK MS BLACKBIRD 018

CED	BW	WW	YW	SC	Milk	CW	Marb	RE	SW	SB
11	0	82	140	1.19	22	72	.26	.87	81	152

**Sire of: H03; H05 Heifers** – Calving ease with explosive growth from this true 7 framed bull that brings an excellent EPD profile. The daughters out of him should all be keepers for certain.



## USE OUR GENETICS FOR ALL THE RIGHT ECONOMIC REASONS

- Fertility
- Docility
- Feed Efficiency
- Milk Production
- Growth
- Retail Acceptance

**SATURDAY,  
MARCH 13, 2021**

**1-29  
BULL RUN  
SALE!**

**6 P.M.**

**1-29  
BULL RUN  
SALE!**

Expo Building  
W.H. Lyon Fairgrounds,  
Sioux Falls, SD