

A series of red circles of varying sizes arranged in a curved path from the top left towards the center.

15%
OFF

Winter Sale
Save on All Tunes!

SHOP NOW

Discount code WINTER15 automatically applied at checkout

A series of red circles of varying sizes arranged in a curved path from the top right towards the center.

FAQ

General Info

Q: What happened to Malone Tuning?

A: TuneZilla is a Tuning Network that was founded by Mark Malone (Malone Tuning) but encompasses more than just Mark Malone and the Malone Tuning tunes. We now have a network of Calibrators/Tuners that contribute to our tuning catalog, all specializing in their respective fields.

Q: Will your tunes void my Warranty?

A: All tunes are specified for "Off-road use only", TuneZilla does not take responsibility for any warranty complications.

Q: What is InstaTune?

A: InstaTune is our online tune platform which is available to customers 24/7, even if we are not. It is always available for you to upload your stock tune, and to access, configure, and download your tune file.

Q: Can I bring my car in? Can I come use the dyno?

A: As our HQ is strictly a research and development facility, we do not take in customer vehicles for tuning or dyno usage. We ask that you refer to our dealer listing to find a local TuneZilla dealer near you: <https://tunezilla.com/dealers>

Q: Do you sell the hardware kits?

*A: All of our available hard products are located here: <https://tunezilla.com/products>
Hardware for emissions kits are on www.rawtekinc.com*

Q: Does the tool come with the tune?

A: Tools do not come pre-loaded as the tuning process would require the stock ECU to be read off and the tune file is encoded and built to match that stock ECU read.

Q: How long do I have after my purchase to download my tune? Do tune credits expire?

A: There is no limit to the amount of time you have to download a tune, and tune credits do not



Q: Will your tunes set my readiness monitors for inspections?

A: Altering readiness monitors may be illegal in many jurisdictions and as such we do not set readiness monitors in our tunes. Please consult your local regulations for inspection requirements.

Q: What is the flashing tool shipping ETA?

A: Tools ship out within 1-2 business days then usually arrives in 3-5 business days.

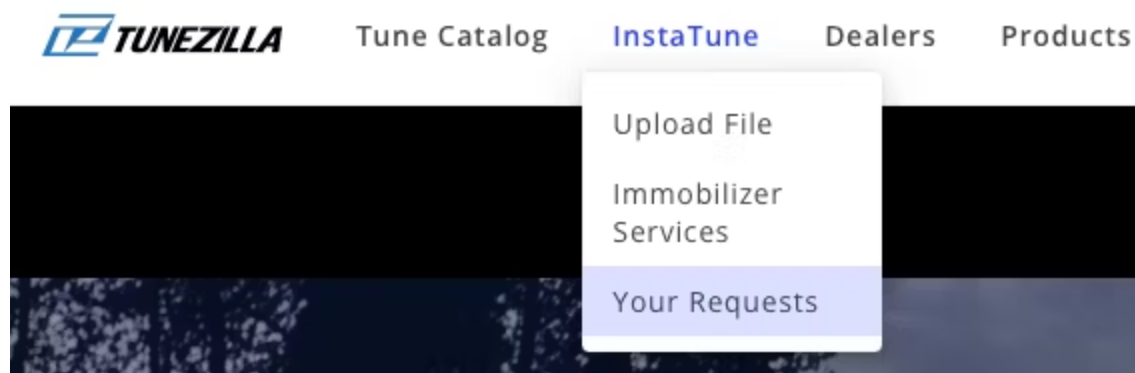
Q: Where can I see horsepower and or torque values.

A: In the catalog- select the vehicle and you may see the power figures for each tune.

Tuning, Re-Tuning

Q: How do I re-tune / update my tune file?

A: You can make tune updates by going to your tune request. Follow this menu:



Q: Can I run my stock exhaust with the delete tune?

A: No, if you have the DPF installed still you should not run the delete tune as this can cause the DPF to clog. The best option will be to download the base tune without the delete add-ons, and then update the file in InstaTune when the hardware has been changed.

Q: I already have a Stage tune and wish to upgrade to a higher tune, how do I do that?

A: Go to the app or your tune request and select the tune you wish flash, system will prompt for payment for difference in tune prices and encode a new file for you.

Q: Do I have to pay full price when upgrading to a higher Stage tune?

A: No need to pay full price when upgrading your tune. All you pay is the difference in cost between the tune you already purchased and the tune you want to upgrade to.



All other exhaust sensors should be removed/unplugged.

For Mercedes, any deletes should be accompanied by unplugging:

DPF delete = electronically unplug the DPF pressure sensor

EGR delete = electronically unplug the EGR

Intake Flap (SWV) delete = electrically unplug the intake flap motor

DO NOT--disconnect exhaust manifold backpressure pressure sensor

Q: Why is there no tool option for my car in the catalog checkout?

A: Your vehicle's ECU cannot be flashed over the OBD port and needs to be bench flashed via a dealer or shipping the ECU to us at HQ.

Q: I am having codes related to the emissions and my check engine light is on but I already bought the deletes tune. Why am I getting these codes?

A: Please ensure that you have selected the deletes add-on selected in the options menu as per the attached photo. Even though these were selected when you purchased the tune initially, you'll need to re-select them when in Instatune configuring your tune. (photo may not be exactly as shown in Instatune as it varies by vehicle)

DPF, EGR, Swirl Deletes

~~\$499.00~~ \$0.00

Off-road only.

Deletes the following: DPF, all EGT sensors in exhaust (the first EGT in exhaust manifold is retained), and secondary O2. EGR fault codes are also deleted, which is required as the missing DPF will trigger at least one EGR.

The DPF downpipe must be replaced with a race downpipe.

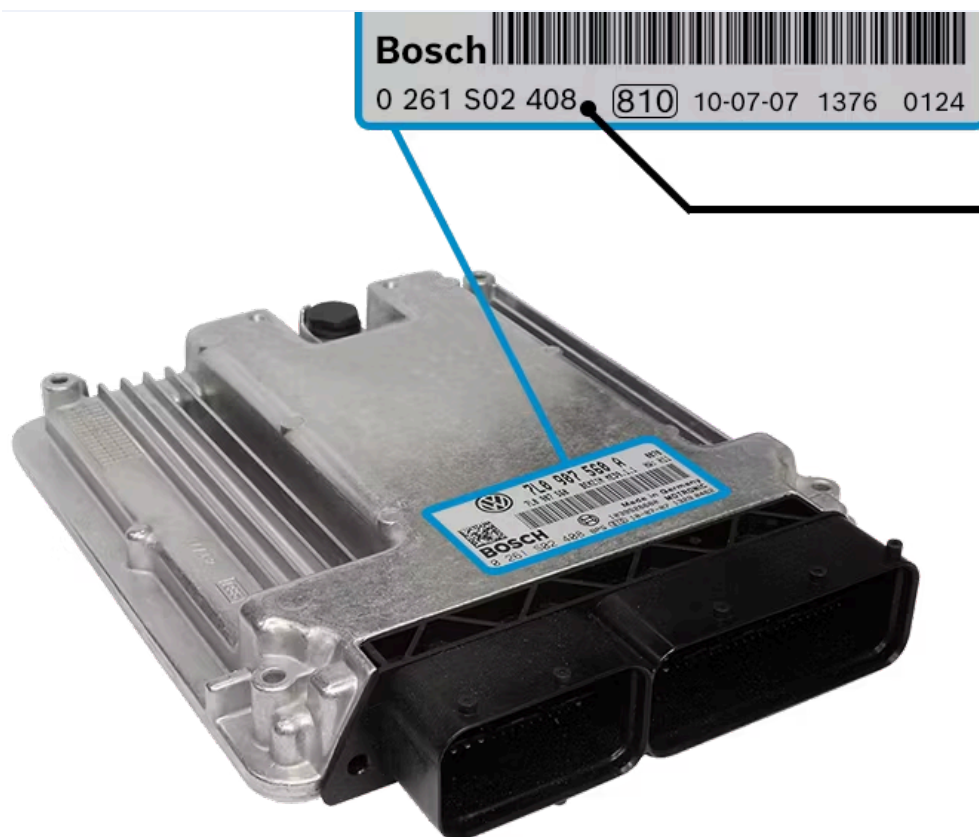
Unplugging anything in the exhaust is optional, not required.

Q: I have a P0544 fault code, can it be tuned out or deleted with your tune?

*A: The P0544 fault code is for exhaust gas temperature (EGT) sensor bank 1 sensor 1. This is the primary EGT sensor located in the exhaust manifold pre-turbo. This sensor **CANNOT** be deleted in the tune as it's vital for engine health and thermal management.*

Q: Why do you need my ECU type or ECU box code? Where do I find it?

A: In some cases, we may request that you send us or upload a photo of your ECU type or box code in order for us to determine exactly what tunes we have available for it. Your ECU type and code will be located on the front of your ECU. (please note photo shows a sample only and your ECU and label may look different)



**Bosch Number:
“0261S02408”**

Q: Do I need to pay for a new tune when upgrading?

A: No, when upgrading your tune there is no need to pay full price for a new tune. All you need to pay is the cost difference between the tune you have, and the tune you want to upgrade to. To upgrade your tune using Instatune, follow this menu to go to your tune request:



Tune Catalog

InstaTune

Dealers

Products

Upload File

Immobilizer
Services

Your Requests

Q: I have upgraded injectors, upgraded turbo, and down pipe, which tune do I need to select?

A: The appropriate tune for this hardware would depend on your vehicle and the hardware specifically. Please go to our tune catalog here: <https://tunezilla.com/catalog>

Enter your vehicle and our catalog tune listings will note when and where specific hardware is required.



check the add another tune box on the right-hand side of the screen.

Q: Looking for best mileage, improvements in fuel economy.

A: As our tunes are designed to be an ideal balance between performance and efficiency, we cannot make any guarantees or provide firm statistics on fuel mileage/economy increases. Some users have reported an approximate 10% increase in MPG, but there are too many factors that can contribute to an increase or decrease in economy for us to accurately quantify it. Anything from driving conditions, driving style, vehicle condition, altitude, and even tire condition/inflation can affect fuel economy.

FlashZilla FAQ

Q: Should I choose the FlashZilla Pro or the FlashZilla V3?

A: We recommend the FlashZilla Pro if it's compatible with your vehicle (check on [the FlashZilla Pro page](#)). The FlashZilla Pro is \$140 and can be used to flash multiple vehicles. The FlashZilla V3 is \$180 and VIN locked to one vehicle.

FlashZilla Pro FAQ

Q: I can't find my tunes with FZ Pro

A: You must be logged in to your TuneZilla account on the TuneZilla Portal App. If you do not see any tunes for your vehicle but your vehicle is compatible with FZ Pro, you will need to request a tune. Follow the prompts in the TuneZilla Portal App.

Q: Can I flash multiple vehicles?

A: Yes, FlashZilla Pro (FZP) is not VIN locked. It can be used to flash multiple vehicles under the same user account, or it can be used under a different user account.

Q: Can I flash a tune from one vehicle to another?

A: No, While FlashZilla Pro can be used to flash multiple vehicles, the tune files are encoded to the ECU of the vehicle. You will not be able to flash multiple vehicles with the same tune.

Q: How many tunes can I have on my FlashZilla Pro?

A: Since FlashZilla Pro is linked to your TuneZilla user account, you can store as many tune files for as many vehicles as you need via the TuneZilla Portal App. The tunes are not stored on the tool itself.



the latest five tunes for each platform (ECU, TCU, AWD) are automatically downloaded when you reach this page. Downloaded tunes are stored to the local computer, not on the tool itself.

Q: How do I flash tunes offline?

A: Open the TuneZilla Portal App while offline. When you see the prompt "Unable to reach the TuneZilla servers, please check your internet connection", press "Enter offline mode". Continue to use the application as normal. You will be able to flash tunes that have been downloaded by the application previously.

FlashZilla V3 FAQ

Q: Can I flash multiple vehicles?

A: The FlashZilla V3 is VIN locked to one vehicle. If you would like to use your FZ3 on a different vehicle please open a [Ticket](#) to explore your options.

Q: How many tunes can I put on the FZ3?

A: The FZ3 can store up to 5 tunes, including your stock file.

Q: Can I flash my TCU with FZ3?

A: Currently, none of our TCU tunes are compatible with FZ3. In most cases, if there is a TCU tune available for your vehicle, it will be compatible with FlashZilla Pro.

Sign up for our newsletter

Be the first to know about our latest news and deals.

SUBMIT



Support hours are weekdays 9:00am to 5:00pm PT

Tune Catalog



Dodge

Jaguar

Jeep

Land Rover

Mercedes

Mini

Porsche

Smart

VW

InstaTune

Upload File

Immobilizer Services

Your Requests

Dealers

Products

FlashZilla

Tickets

Your Tickets

Create Ticket

Logging

Upload

Search

Stats

Groups

Guides

News

Blog

Beta Releases

More

FAQ

Affiliates

[Privacy Policy](#)

[Terms of Service](#)

© Copyright 2024 TuneZilla
All rights reserved.