




## Introducing: **Employee *Return to Work* Kits**

Customized Employer Solutions to Prepare Employees for Transitioning Back to Work





## Your Team Is Invaluable. Our Kits Make Them Know It.

Our *Return to Work Kits* provide your employees with a physical reminder of how serious your company is about their health and safety as you transition back to the workplace.

Find the *Kit* that meets the needs of your workforce to help them prepare.





## Return to Work Kits that are as specialized as your team.

1

We offer 3 differentiated Employee *Return to Work Kits* that help communicate your organization's commitment to keeping employees informed and safe during the transition back to the workplace.

2

Each Turnkey Kit includes necessary information about your return to work strategy along with safety practices and provided safety items.

3

Each Kit also includes a FDA EUA authorized COVID-19 At-Home Collection Test that allows for each employee to self-collect a specimen and receive test results in 24-48 hours; α COVID-19 IgG Antibody Test.

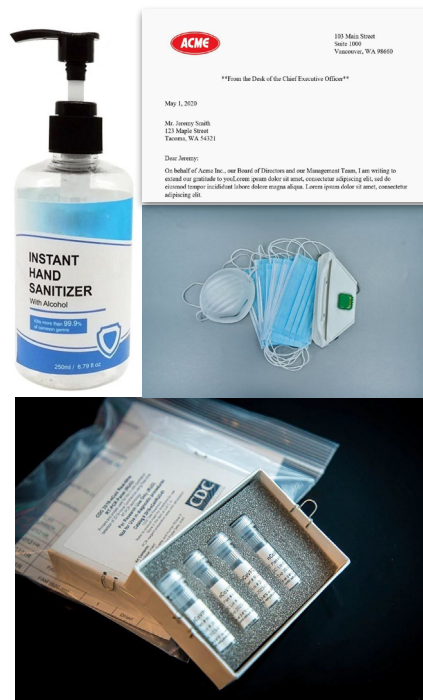
4

Each Test Kit Level allows the employer to determine the right approach to take with their workforce that combines communication, testing and ongoing workplace safety reinforcement.

# Core Return to Work Kit

The *Core* Return to Work Kit is an essential tool to help communicate your organization's commitment to keeping your employees informed and safe during the transition back to the office or workplace. It provides necessary guidance, essential at-home collection testing and best practices. The customizable turnkey Kit includes the following:

- 01 | Employer-Branded Communication Outlining  
Employee Workplace Return Procedures and Testing Protocol
- 02 | Recommended Safe Practices/CDC Prevention Guide
- 03 | At Home COVID-19 Test Collection (Saliva Test)/or  
COVID-19 IgG Antibody Detection Test

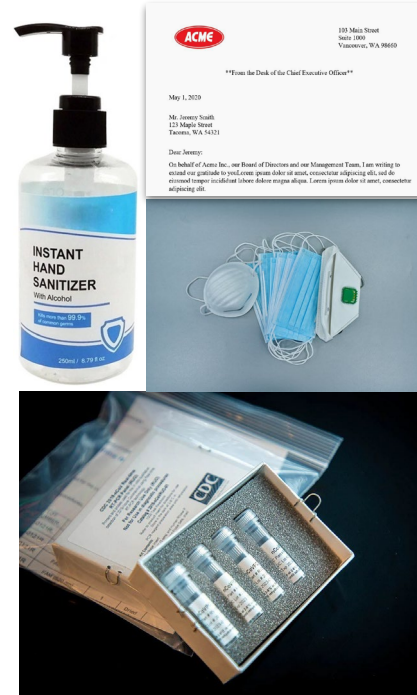




# Enhanced Return to Work Kit

The *Enhanced* Return to Work Kit features 2 kits in 1. First, each employee will receive the *Core* Return to Work Kit. In addition, the *Enhanced* Kit includes protective gear meant to be used in the office, including Non-Surgical Face Masks and Hand Sanitizer, to reinforce Safety practices upon their return.

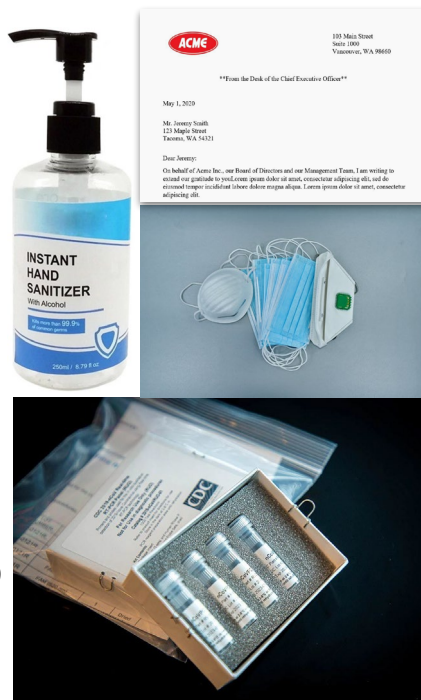
- 01 | All Items from "CORE" Return to Work Kit -- PLUS
- 02 | Personal 9oz. bottle Hand Sanitizer Suitable for Employee Workstations
- 03 | 5 Non-Surgical Masks Per Employee for Use in Office



# Premium Return to WorkKit

The *Premium* Return to Work Kit is designed to provide an additional layer of ongoing safety for your workplace once employees return. The *Premium* Kit combines all of the employee communication, testing and workplace safety reinforcement tools of the *Enhanced* Kit with a second At-Home Collection COVID19 test kit or COVID-19 Antibody Test for use and distribution by the employer. The *Premium* Kit ensures that quick and efficient testing is immediately available when needed to instill confidence in proactive workplace safety measures.

- 01 | All Items in "Core" and "Enhanced" Kits --- PLUS
- 02 | Second Prepaid COVID-19 At-Home Test and/or Prepaid COVID-19 COVID-19 IgG Antibody Detection Test for Quick and Efficient Additional Employee Testing Ability When Needed or Requested





## More About: COVID-19 At-Home Collection Testing



### User Friendly Kits. Easy to Ship.

Easy and safe specimen collection kit with proprietary media that can be transported at room temperature.

### Technology Based. FDA EUA Authorized.

FDA EUA authorized for testing of SARS-CoV2 (COVID-19). At-home specimen collection by patient, easy packaging, prepaid overnight return to Test Lab.



### Accurate Results. Efficient Timing.

FDA Authorized Lab through Rutgers University ensures fast and accurate results. 48 hours of turnaround time of testing results.



## HOW AT-HOME COLLECTION TESTING WORKS



EMPLOYEE

### Step 1



#### **Receive At-Home Collection Test Inside Return-To-Work Kit**

Once employee receives their Employee Back-To-Work Kit, they will be instructed to login to testing provider website to complete their patient intake process as part of the At-Home Test.

### Step 2



#### **Self-Collect Specimen Per Instructions and Prepare Package for Overnight Delivery**

Employee self-collects specimen with assistance of Zoom-call telenurse provided with kit instructions. Once completed, employee secures specimen in included packaging and sends to Testing Lab via prepaid overnight delivery.

### Step 3



#### **Receive COVID-19 Test Result Report Within 48 Hours**

Test Lab/Test Manufacturer will send employee a mobile alert and an email with COVID-19 test results within 48 hours. If Employee has opted-in, test results will also be sent to employee's physician and employer as noted during patient intake.



A horizontal bar with a teal segment on the left and an orange segment on the right, positioned above the text.

**For More Information or to Place an Order**



Todd J. Cohn  
Principal  
**Fidelio Business Advisors**  
p: 703-627-9056  
e: [todd.cohn@fidelioadvisors.com](mailto:todd.cohn@fidelioadvisors.com)  
w: <http://www.fidelioadvisors.com>