

Marco Krause
Dr. MAK's Apothecary
3435 Greystone Drive
Austin, TX 78731



Project # 132452
Control # 117149

Project

Sample 21MAK8C0111ZK

Matrix other

Date/Time Taken Jan 11, 2021

Date/Time Rec'd Jan 11, 2021 16:00

CERTIFICATE OF ANALYSIS

<u>Analyte</u>	<u>Result</u>	<u>Units</u>	<u>LOQ</u>	<u>Date</u>	<u>By</u>	<u>Method</u>	<u>Criteria</u>	<u>Status</u>
Terpenes								
Anisole	ND	mg/g	0.5	1/11/21	MCK	HS-GC-MS		
Azulene	ND	mg/g	0.5	1/11/21	MCK	HS-GC-MS		
α -Bisabolol	1.4	mg/g	0.5	1/11/21	MCK	HS-GC-MS		
Borneol	ND	mg/g	0.5	1/11/21	MCK	HS-GC-MS		
Camphene	ND	mg/g	0.5	1/11/21	MCK	HS-GC-MS		
Camphor	ND	mg/g	0.5	1/11/21	MCK	HS-GC-MS		
δ -3-Carene	ND	mg/g	0.5	1/11/21	MCK	HS-GC-MS		
Caryophyllene oxide	1.3	mg/g	0.5	1/11/21	MCK	HS-GC-MS		
β -Caryophyllene	24	mg/g	0.5	1/11/21	MCK	HS-GC-MS		
α -Cedrene	ND	mg/g	0.5	1/11/21	MCK	HS-GC-MS		
Cedrol	ND	mg/g	0.5	1/11/21	MCK	HS-GC-MS		
Citral	ND	mg/g	0.5	1/11/21	MCK	HS-GC-MS		
Eucalyptol	ND	mg/g	0.5	1/11/21	MCK	HS-GC-MS		
Eugenol	ND	mg/g	0.5	1/11/21	MCK	HS-GC-MS		
α -Farnesene	ND	mg/g	0.5	1/11/21	MCK	HS-GC-MS		

Copyright 2020, Krause Analytical LLC. All rights reserved.
Results meet internal quality control criteria unless otherwise flagged.
Sample data reported refers strictly to the sample indicated.
LOQ - limit of quantification. ND - not detected above the LOQ
Plant matter results reported on a dry weight basis
Measurement uncertainty from root sum of squares

Respectfully submitted,

Mark C. Krause

Marco Krause
Dr. MAK's Apothecary
3435 Greystone Drive
Austin, TX 78731



Project # 132452
Control # 117149

Project

Sample 21MAK8C0111ZK

Matrix other

Date/Time Taken Jan 11, 2021

Date/Time Rec'd Jan 11, 2021 16:00

CERTIFICATE OF ANALYSIS

<u>Analyte</u>	<u>Result</u>	<u>Units</u>	<u>LOQ</u>	<u>Date</u>	<u>By</u>	<u>Method</u>	<u>Criteria</u>	<u>Status</u>
β -Farnesene	ND	mg/g	0.5	1/11/21	MCK	HS-GC-MS		
cis- β -Farnesene	ND	mg/g	0.5	1/11/21	MCK	HS-GC-MS		
Fenchol	ND	mg/g	0.5	1/11/21	MCK	HS-GC-MS		
Fenchone	ND	mg/g	0.5	1/11/21	MCK	HS-GC-MS		
Geraniol	ND	mg/g	0.5	1/11/21	MCK	HS-GC-MS		
Humulene	7.6	mg/g	0.5	1/11/21	MCK	HS-GC-MS		
Limonene	6.6	mg/g	0.5	1/11/21	MCK	HS-GC-MS		
pseudo-Limonene	ND	mg/g	0.5	1/11/21	MCK	HS-GC-MS		
Linalool	6.3	mg/g	0.5	1/11/21	MCK	HS-GC-MS		
Myrcene	0.68	mg/g	0.5	1/11/21	MCK	HS-GC-MS		
Neral	ND	mg/g	0.5	1/11/21	MCK	HS-GC-MS		
cis-Neridol	ND	mg/g	0.5	1/11/21	MCK	HS-GC-MS		
trans-Nerilidol	ND	mg/g	0.5	1/11/21	MCK	HS-GC-MS		
Nerol	ND	mg/g	0.5	1/11/21	MCK	HS-GC-MS		
Ocimene 1	ND	mg/g	0.5	1/11/21	MCK	HS-GC-MS		
Ocimene 2	ND	mg/g	0.5	1/11/21	MCK	HS-GC-MS		
α -Phellandrene	ND	mg/g	0.5	1/11/21	MCK	HS-GC-MS		

Copyright 2020, Krause Analytical LLC. All rights reserved.

Results meet internal quality control criteria unless otherwise flagged.

Sample data reported refers strictly to the sample indicated.

LOQ - limit of quantification. ND - not detected above the LOQ

Plant matter results reported on a dry weight basis

Measurement uncertainty from root sum of squares

Marco Krause
Dr. MAK's Apothecary
3435 Greystone Drive
Austin, TX 78731



Project # 132452
Control # 117149

Project

Sample 21MAK8C0111ZK

Matrix other

Date/Time Taken Jan 11, 2021

Date/Time Rec'd Jan 11, 2021 16:00

CERTIFICATE OF ANALYSIS

<u>Analyte</u>	<u>Result</u>	<u>Units</u>	<u>LOQ</u>	<u>Date</u>	<u>By</u>	<u>Method</u>	<u>Criteria</u>	<u>Status</u>
cis-Phytol	ND	mg/g	0.5	1/11/21	MCK	HS-GC-MS		
trans-Phytol	ND	mg/g	0.5	1/11/21	MCK	HS-GC-MS		
α -Pinene	0.98	mg/g	0.5	1/11/21	MCK	HS-GC-MS		
β -Pinene	0.67	mg/g	0.5	1/11/21	MCK	HS-GC-MS		
iso-Pulegol	ND	mg/g	0.5	1/11/21	MCK	HS-GC-MS		
Pulegone	ND	mg/g	0.5	1/11/21	MCK	HS-GC-MS		
Sabinene	ND	mg/g	0.5	1/11/21	MCK	HS-GC-MS		
α -Terpinene	ND	mg/g	0.5	1/11/21	MCK	HS-GC-MS		
α -Terpineol	ND	mg/g	0.5	1/11/21	MCK	HS-GC-MS		
γ -Terpineol	ND	mg/g	0.5	1/11/21	MCK	HS-GC-MS		
Terpinolene	ND	mg/g	0.5	1/11/21	MCK	HS-GC-MS		
Valencene	ND	mg/g	0.5	1/11/21	MCK	HS-GC-MS		

Copyright 2020, Krause Analytical LLC. All rights reserved.

Results meet internal quality control criteria unless otherwise flagged.

Sample data reported refers strictly to the sample indicated.

LOQ - limit of quantification. ND - not detected above the LOQ

Plant matter results reported on a dry weight basis

Measurement uncertainty from root sum of squares



Underground Alchemy LLC
3435 Greystone Suite 102
Austin, TX 78731

Project # 132451
Control # 117147

Project

Sample 21UA8B0108

Matrix other

Date/Time Taken Jan 9, 2021

Date/Time Rec'd Jan 9, 2021 10:00

CERTIFICATE OF ANALYSIS

<u>Analyte</u>	<u>Result</u>	<u>Units</u>	<u>LOQ</u>	<u>Date</u>	<u>By</u>	<u>Method</u>	<u>Criteria</u>	<u>Status</u>
Potency								
Total cannabinoids	98.8	%	0.1	1/9/21	MCK	GC-MS		
Cannabichromene (CBC)	ND	%	0.1	1/9/21	MCK	GC-MS		
Cannabidiol (CBD)	0.21	%	0.1	1/9/21	MCK	GC-MS		
Cannabigerol (CBG)	ND	%	0.1	1/9/21	MCK	GC-MS		
Cannabinol (CBN)	1.2	%	0.1	1/9/21	MCK	GC-MS		
Δ 8-Tetrahydrocannabinol (THC)	94.5	%	0.1	1/9/21	MCK	GC-MS		
Δ 9-Tetrahydrocannabinol (THC)	0.73	%	0.1	1/9/21	MCK	GC-MS		
exo-Tetrahydrocannabinol (THC)	0.78	%	0.1	1/9/21	MCK	GC-MS		
Additional hydrocannabinols (HHCs)	1.4	%	0.1	1/9/21	MCK	GC-MS		
Total Δ 9-THC, post-decarboxylation	0.73	%	0.1	1/9/21	MCK	GC-MS	0.3 +/- 0.47	Pass
Residual Solvents								
Acetone	ND	mg/Kg	200	1/9/21	MCK	USP467M		
Acetonitrile	ND	mg/Kg	200	1/9/21	MCK	USP467M		
Benzene	ND	mg/Kg	200	1/9/21	MCK	USP467M		
Butanes, total	ND	mg/Kg	100	1/9/21	MCK	USP467M		

Copyright 2020, Krause Analytical LLC. All rights reserved.
Results meet internal quality control criteria unless otherwise flagged.
Sample data reported refers strictly to the sample indicated.
LOQ - limit of quantification. ND - not detected above the LOQ
Plant matter results reported on a dry weight basis
Measurement uncertainty from root sum of squares

Respectfully submitted,

Mark C. Krause

Underground Alchemy LLC
3435 Greystone Suite 102
Austin, TX 78731



Project # 132451

Control # 117147

Project

Sample 21UA8B0108

Matrix other

Date/Time Taken Jan 9, 2021

Date/Time Rec'd Jan 9, 2021 10:00

CERTIFICATE OF ANALYSIS

<u>Analyte</u>	<u>Result</u>	<u>Units</u>	<u>LOQ</u>	<u>Date</u>	<u>By</u>	<u>Method</u>	<u>Criteria</u>	<u>Status</u>
2-Butanol	ND	mg/Kg	200	1/9/21	MCK	USP467M		
Cumene	ND	mg/Kg	50	1/9/21	MCK	USP467M		
Cyclohexane	ND	mg/Kg	50	1/9/21	MCK	USP467M		
1,2-dichloroethane	ND	mg/Kg	50	1/9/21	MCK	USP467M		
1,4-Dioxane	ND	mg/Kg	200	1/9/21	MCK	USP467M		
Ethanol	ND	mg/Kg	200	1/9/21	MCK	USP467M		
2-Ethoxyethanol	ND	mg/Kg	50	1/9/21	MCK	USP467M		
Ethyl acetate	ND	mg/Kg	50	1/9/21	MCK	USP467M		
Ethyl ether	ND	mg/Kg	50	1/9/21	MCK	USP467M		
Ethylbenzene	ND	mg/Kg	50	1/9/21	MCK	USP467M		
Ethylene glycol	ND	mg/Kg	200	1/9/21	MCK	USP467M		
Ethylene oxide	ND	mg/Kg	100	1/9/21	MCK	USP467M		
Heptanes	ND	mg/Kg	50	1/9/21	MCK	USP467M		
Hexanes	ND	mg/Kg	50	1/9/21	MCK	USP467M		
Isopropanol	ND	mg/Kg	100	1/9/21	MCK	USP467M		
Isopropyl acetate	ND	mg/Kg	50	1/9/21	MCK	USP467M		
Methanol	ND	mg/Kg	500	1/9/21	MCK	USP467M		

Copyright 2020, Krause Analytical LLC. All rights reserved.

Results meet internal quality control criteria unless otherwise flagged.

Sample data reported refers strictly to the sample indicated.

LOQ - limit of quantification. ND - not detected above the LOQ

Plant matter results reported on a dry weight basis

Measurement uncertainty from root sum of squares



Underground Alchemy LLC
3435 Greystone Suite 102
Austin, TX 78731

Project # 132451
Control # 117147

Project

Sample 21UA8B0108

Matrix other

Date/Time Taken Jan 9, 2021

Date/Time Rec'd Jan 9, 2021 10:00

CERTIFICATE OF ANALYSIS

<u>Analyte</u>	<u>Result</u>	<u>Units</u>	<u>LOQ</u>	<u>Date</u>	<u>By</u>	<u>Method</u>	<u>Criteria</u>	<u>Status</u>
Methylene chloride	ND	mg/Kg	50	1/9/21	MCK	USP467M		
Pentanes, total	ND	mg/Kg	100	1/9/21	MCK	USP467M		
Propane	ND	mg/Kg	100	1/9/21	MCK	USP467M		
Tetrahydrofuran	ND	mg/Kg	50	1/9/21	MCK	USP467M		
Toluene	ND	mg/Kg	50	1/9/21	MCK	USP467M		
Trichloroethene	ND	mg/Kg	50	1/9/21	MCK	USP467M		
Xylenes, total	ND	mg/Kg	100	1/9/21	MCK	USP467M		

Copyright 2020, Krause Analytical LLC. All rights reserved.

Results meet internal quality control criteria unless otherwise flagged.

Sample data reported refers strictly to the sample indicated.

LOQ - limit of quantification. ND - not detected above the LOQ

Plant matter results reported on a dry weight basis

Measurement uncertainty from root sum of squares

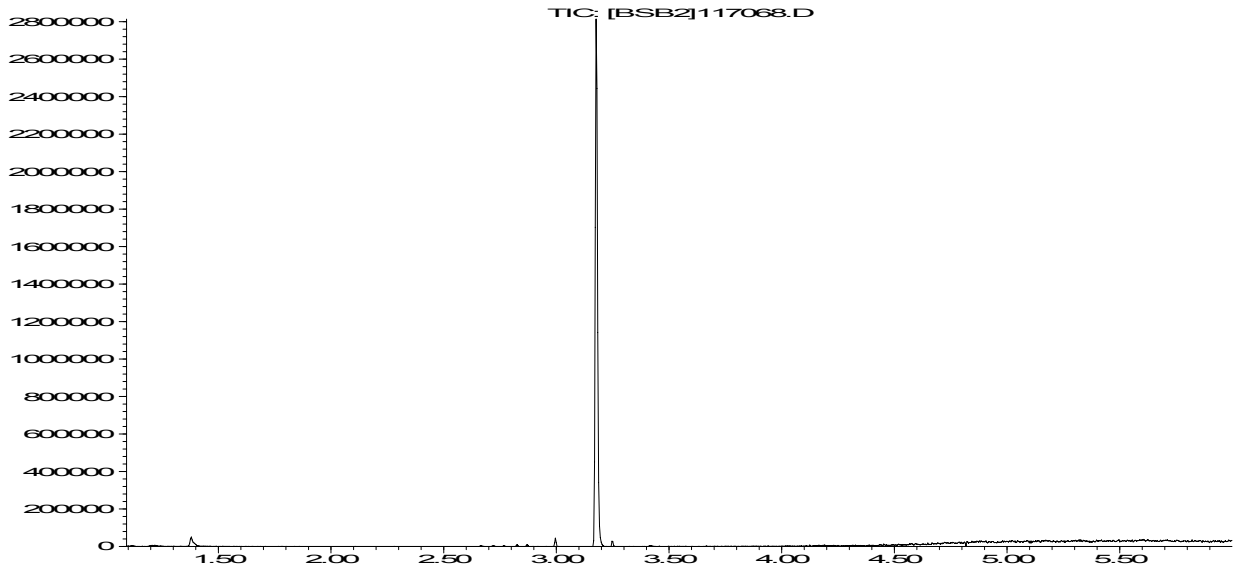


krause analytical

117147

20UA8B0108

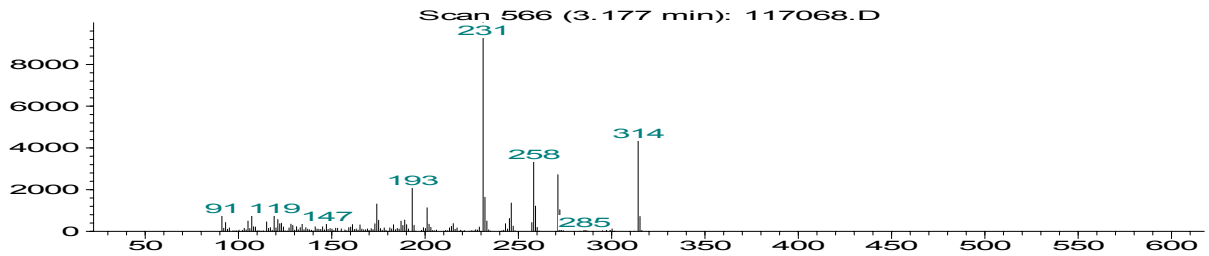
Abundance



Time-->

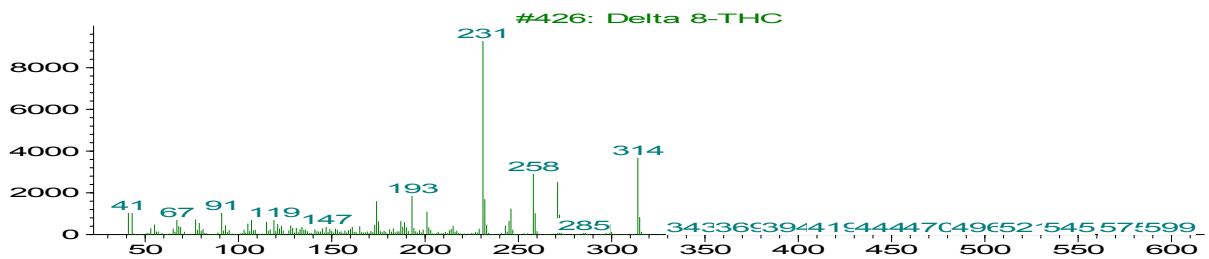
Spectral Match 98%

Abundance



m/z-->

Abundance



m/z-->

*Krause Analytical 8127 Mesa Drive Suite B-206 Austin, TX 78759 (512) 569-9586
mark.krause@krauseanalytical.com*