



Amedeo Modigliani  
*Fillette en Bleu* 1919  
Oil on canvas  
55 x 46 cm  
Signed top right

### Provenance

- Galerie Zak, Paris 1929 (mentioned in the Tooth Gallery inventories)
- Arthur Tooth & Sons, London (stock N°.279, as seen in the Tooth Gallery inventories kept at the Tate Gallery, London)
- Sir Victor Gollancz, London, purchased from the above 8 April 1938
- Lady Ruth Gollancz
- Sotheby's London, Lady Gollancz Estate Sale, 4 July 1973, Lot 69, color reproduction
- Raul Cano (purchased at the above sale)
- Saint Louis Art Museum, on longterm loan (1994-1997)
- Private collection, New York

### Exhibition History

- *Modigliani*, The Storrans Gallery, London April 1937, N°.7, illustrated
- *Amedeo Modigliani, "The Modern Botticelli,"* Arthur Tooth & Sons, London, 17 March - 9 April 1938, N°.31 (No. 2476 on the Tooth Gallery register)

### Expertise

- The latest scientific analysis by Art Discovery, New York, 6 March 2025, 40 page report.

## Published References

- Arthur Pfannstiel, *Modigliani, Paris: Editions Marcel Seheur*, 1929. Catalogue Presumé p.54. *Head of Girl in Blue, Red Ribbon/ Tête de Fillette en Bleu, Ruban Rouge*, 1919, oil on canvas, Zak Collection Paris, 55 x 46 cm.
- Arthur Pfannstiel, *Modigliani et son œuvre*, 1929. Étude critique et Catalogue Raisonné, Paris, La Bibliothèque des Arts, 1956, No.340 p.166.
- Joseph Lanthemann, *Catalogue Raisonné Modigliani* No.308, which both Jeanne Modigliani (daughter of the artist) and Lanthemann worked on using the artist's original archives. Barcelone, Graficas Condal, 1970, reproduced p.241 *La Fillette en Bleu*.

## Commentary

This portrait would most likely have been painted in the South of France while Modigliani was staying there and using young children, often servants, as models.

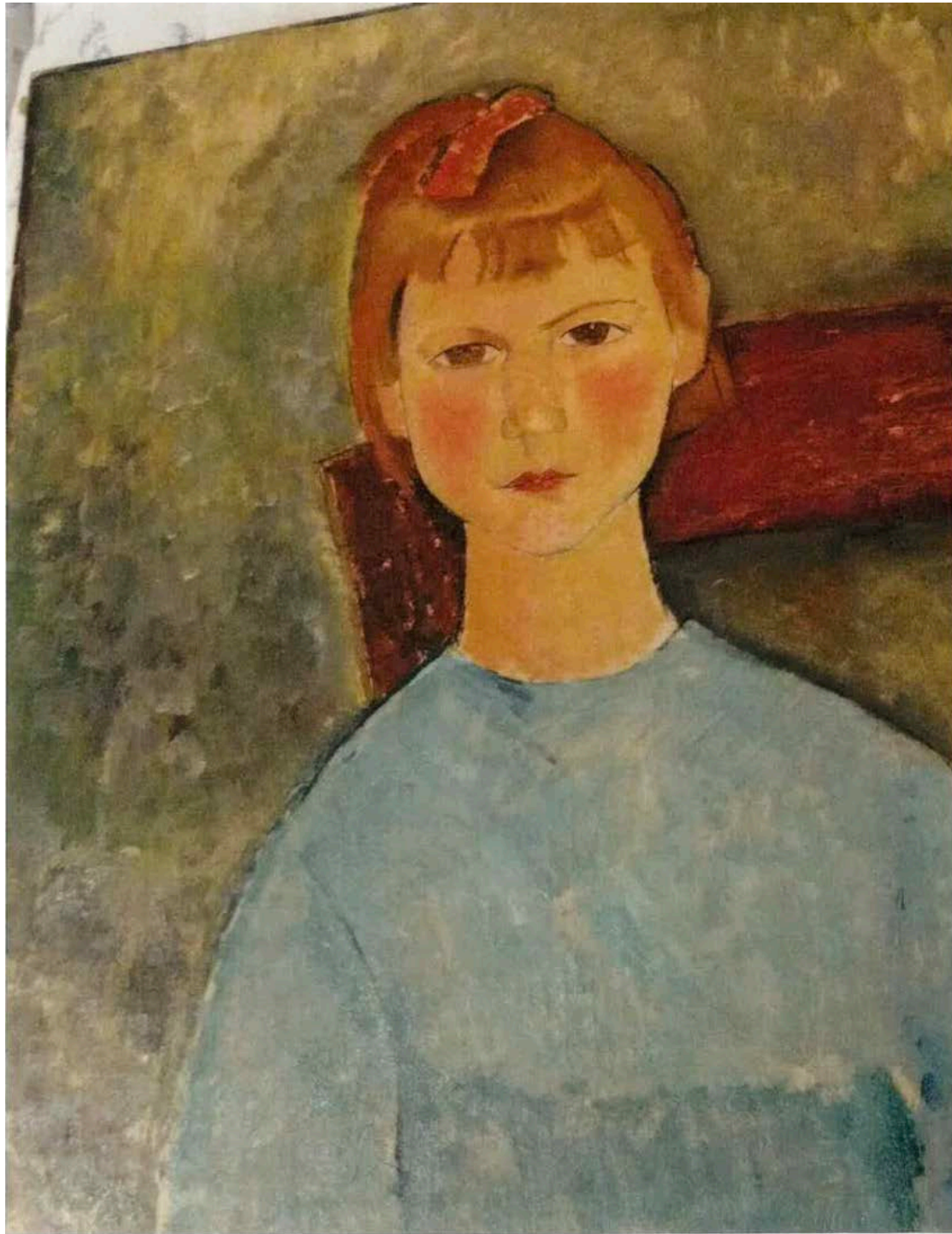
Sotheby's letter 2 August 2018 states that there had been several information requests on this painting from 2016-2018 but it was never subject to any claim or dispute. They confirm the sale made to Mr. Cano Faro in 1973. The work sale is duly recorded in their archives. Work was sold by the order of the executors representing the State of of late Lady Ruth Gollancz.

*"Signature authentication: Modigliani's signature was subject to small variation, depending on the speed with which he wrote, unlike most artists who sign the bottom left or right of their canvases, Modigliani often signed the upper edge of his portraits; close comparison with a number of examples leaves no doubt in our experts' minds that his salient characteristics were present and that no indication of forgery was in question. Work was accompanied by strong Provenance. Work was auctioned as Lot 69."* Sotheby's London.

*"La Fillette en Bleu (1993.573) was here at the Saint Louis Art Museum on long term loan January 10, 1994 - January 1, 1997. The painting was offered to the Museum for loan along with another painting, Claude Monet's Ice at Bennecourt (1993.572) by Citibank Art Advisory Service on behalf of a private collection. The Monet painting was on view in the galleries but there is no exhibition history for La Fillette en Bleu while it was here. I have attached an image and a reference from Amedeo Modigliani, Catalogo General."* Pat Boulware, Collections Documentation Assistant, Saint Louis Art Museum.

THE  
**MODIGLIANI**  
PROJECT

Photograph with label from the archive of loans to Saint Louis Museum of Art



1993.573