

Riverview Estates

Premier Residential Building Sites on Tippecanoe River

Located 3 miles South of Winamac, Indiana on State Road 119

- River front lots
- Wooded lots
- Lake lots

Access to common areas:

- Tippecanoe River
- Green belt areas
- Nature trails
- Lakes and ponds

For additional information contact:

A. L. Perry Family
Limited Partnership
812-867-7727
debbie@alperry.com

Riverview Estates is a planned residential community featuring access by each lot owner to the Tippecanoe River, nature trails, green belt, common areas and fresh water lakes.

Highlights of the 125 acre residential development include building lots on the Tippecanoe River, lake front lots, wooded lots, and open lots.

Paved streets and utilities, including underground electric and natural gas; currently in Phase I only.



Lake front lots with common lake area



Development of Phase I showing existing homes, wooded lots and cul-de-sac

Reserve your building lot now.
Financing available.



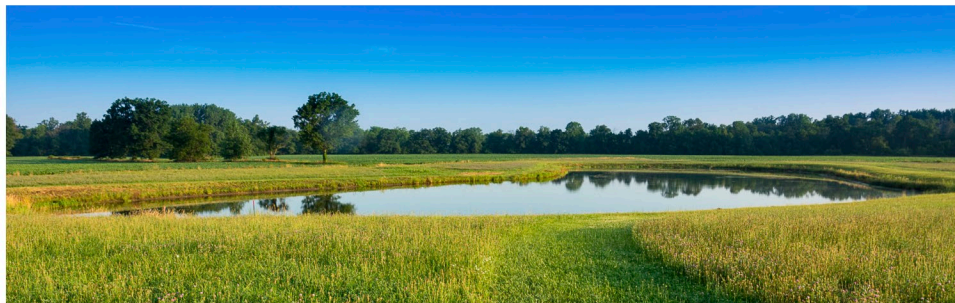
Wooded lots



Riverview Estates Phase I and II lots (Pulaski County GIS map)

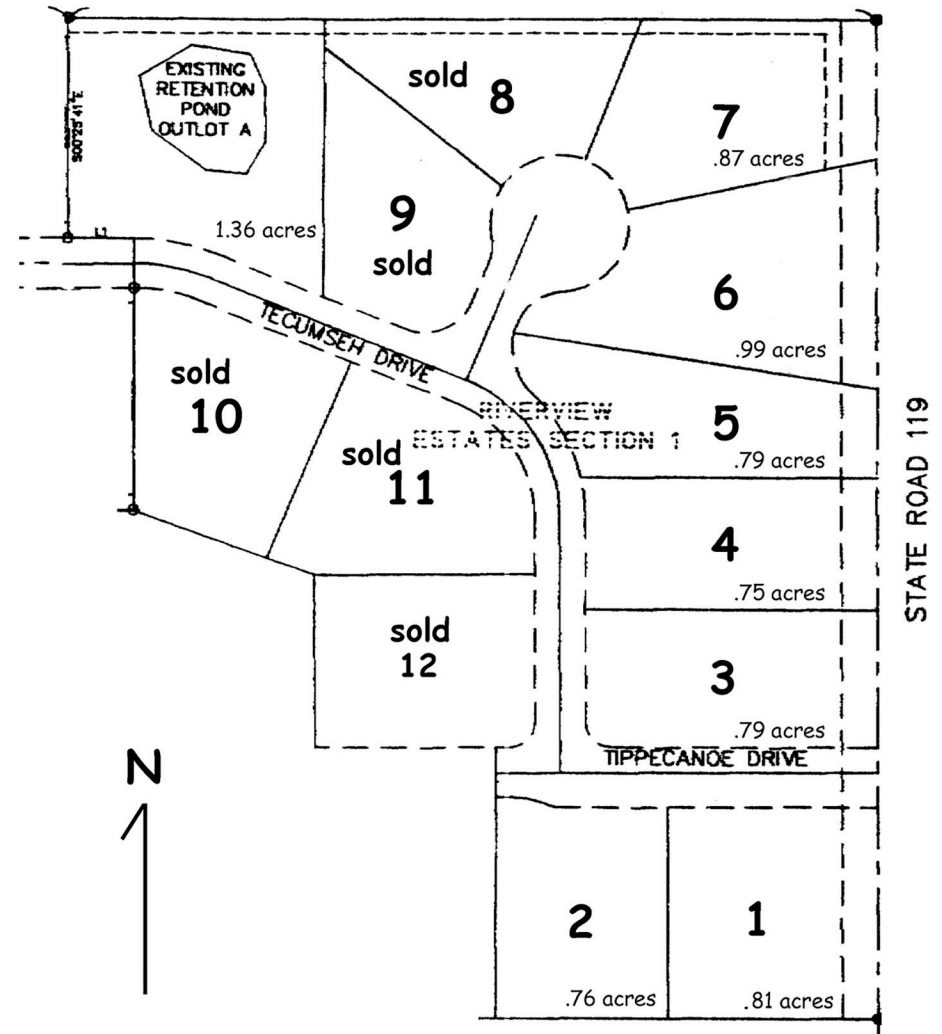


Aerial map of development along scenic Tippecanoe River

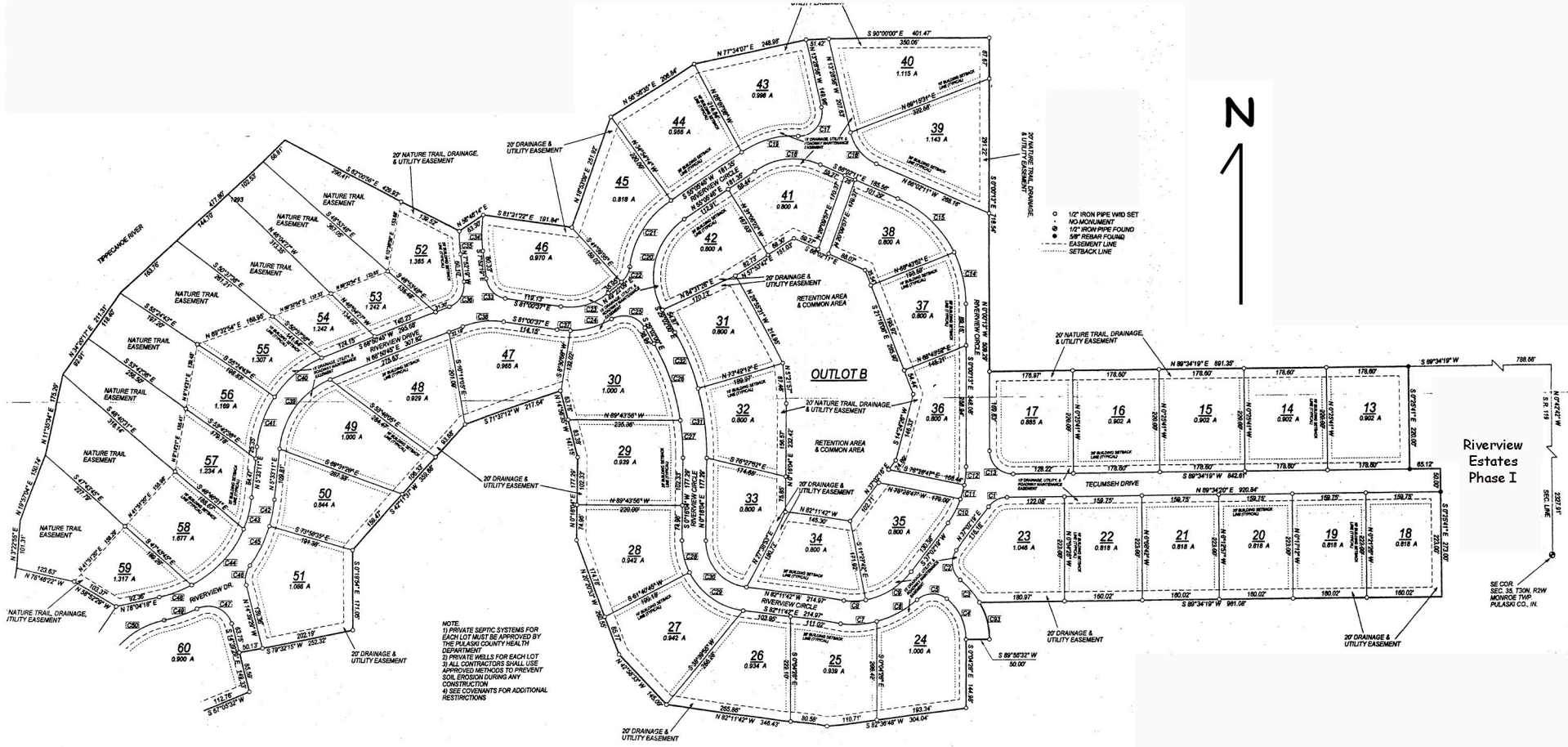


Path to common lake

Riverview Estates Phase I



Riverview Estates Phase II



Additional Riverview Estates Phase II

