

AB SOLUTIONS IT-SECURITY

At AB Solutions we safeguard each client's system to ensure that the below security objectives can be achieved:

Confidentiality - Protecting information from unauthorized access and disclosure.

Integrity - Assuring the reliability and accuracy of information and IT resources by guarding against unauthorized information modification or destruction.

Availability - Defending information systems and resources to ensure timely and reliable access and use of information.



ABS IT-SERVICES

The main objectives of ABS services group are:

- **IT- Industrial Cyber Security; protect the information and systems that support the client's operations and assets**
- **Physical Security, CCTV, SA and Access Control Systems**
- **Communications - PI / PA & Radio**
- **Server Headend management and PLC industrial system maintenance**
- **Implement three step security authentication firewalls for critical VPN access**
- **Analytic Data collection**

ABS – CERTIFICATIONS



ABS CLIENTS - PORTFOLIO



NEWMARK



CBRE



SL GREEN
REALTY CORP.



LEITER PROPERTY
MANAGEMENT



SIMONE
DEVELOPMENT & MANAGEMENT INC.



AKAM
EST. 1983



BDG



PARAMOUNT
GROUP



HIGHGATE

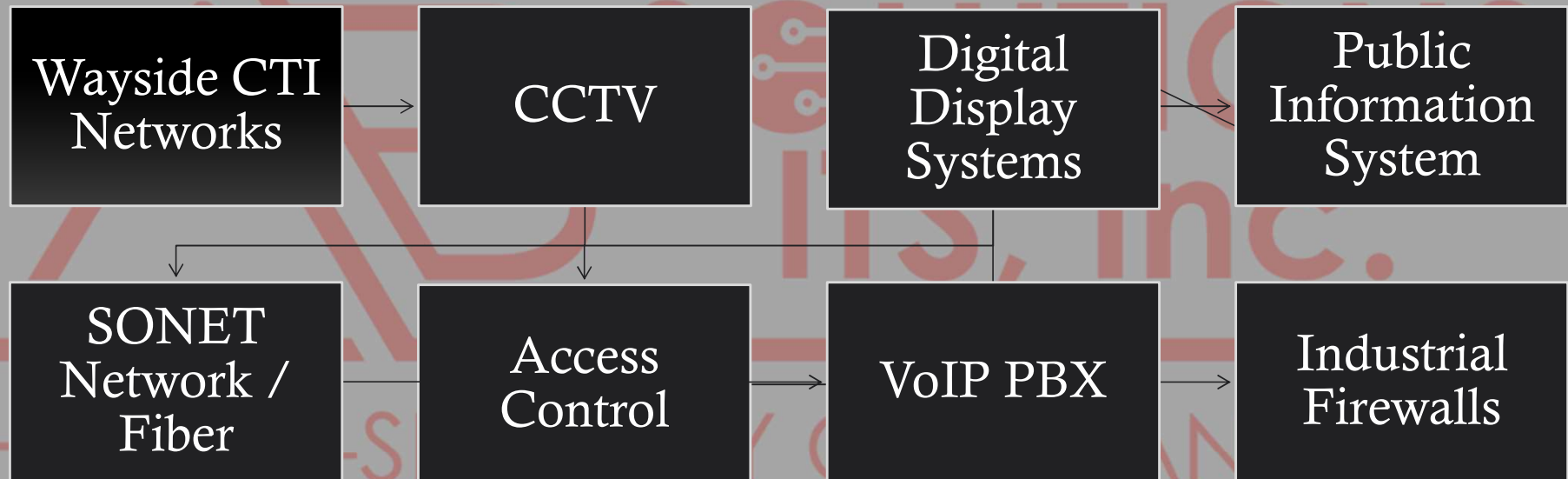
ABS CLIENTS - PORTOFOLIO



PHYSICAL ITSEC & SITUATIONAL AWARENES

- Multiple video management systems used with no connections to each other
- Capability to manage and support system with over 1000 cameras
- Provide solutions upgrading to enterprise VMS system with SA implementation in critical rooms throughout client facilities
- Support sound intelligence and loitering implementation via Axis/Bosch cameras for critical public areas.
- Methodology VMS approach - multisite implementation with SA (situational awareness) - Central, APM, asset storage location, safety critical rooms, facility perimeter, support wayside coverage.
- Onboard stand-alone CCTV system with event recording. Geographical DMZ download option to O&M facility.

ABS – SUPPORTED SYSTEMS



HEADEND HRDW & SFTW SUPPORT



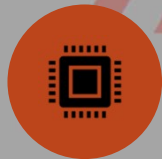
VSS - Upgrade process,
review project plan and
advise with best approach
for headend installation
and commissioning/
implementation.



**Implement recommended
IT Security as per OEM**



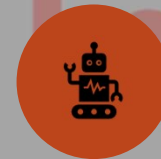
**Support T&C with
inhouse staff and
supervise proper security
implementation**



**Industrial Systems -
evaluate obsolesces
headend upgrade project
scope.**



**Implement recommended
IT Security standards as
per OEM**



**Upgrade needed to
headend equipment, SVRs
are obsolete.**



**PLC systems – provide
industrial system support,
evaluate system status.**



**Collaborate with OEM for
system assessment under
new ICS standards**

CTI- COMM T_x INFRASTRUCTURE

Support and maintain secure radio and VoIP phone system.

Add value to upgraded system, enhance support process.

Support secure network infrastructure that connect headend servers with field system.

Provide solutions to expend VoIP and intercoms to critical rooms.

CTI Infrastructure - review availability fiber infrastructure drawings. Evaluate fiber availability for future system overhaul.

ABS - @JFK INT'L AIRPORT

*Maintain, manage 7 Industrial Core Systems and 17 sub-systems. IT-Engineering Group maintains less than a 0.5% network downtime.

*Integrate Network Devices via WAP – Support Team Collaboration and Training

*CCTV services enhancement by adding onboard video capability via wireless technology.

*IS&T Network Overhaul - Upgrade Network Infrastructure for JFK site w/1GB PoE user interface

*Create business plan for 500MB Dedicated Business Ethernet Solution for asset management Access Public Information enhancement by adding train predictions on the platforms.

*Creation of new XML code supporting PI and PA systems protocols.

