



Symbiosphere

...reconnecting nature and people



About Symbiosphere

At Symbiosphere, we adopt a **multidisciplinary** and **collective approach** to draw inferences and make **informed policymaking**. We are proactive in providing **knowledge-driven, research-based** practical **interdisciplinary expertise** that meets the requirements of the project while meeting our professional objectives.

Our approach is **transparent, results-driven**, and based on **on-the-ground experiences**. We use our **international experience in the national context** to provide services and actions that are **resilient, synergistic**, and **sustainable**.

Why Us

- **Multidisciplinary** core team
- Network with **International experts** of repute and **Universities/Institutes** for evidence-based policy actions.
- **Scientific** and **technical skills** to enable informed decision-making.
- **Experienced data analysis** (both quantitative and qualitative) **and communication skills**.
- An **illustrious advisory board** for strategic direction.

Our focused areas and services

Water Resource Management

We work towards ensuring water security in urban and rural areas. We adopt a collective approach to identify the knowledge gaps, address them and propose policy actions to ensure the supply of safe and adequate water. Adopting a socio-hydrological approach, our experts focus on the intersection of water and society, more specifically in areas like the water-food nexus, water use efficiency, behavioural nudges to conserve water, water governance and climate-resilient water systems. We design frameworks and conduct related assessments and on-ground baseline surveys, village level water resource management and planning, community-level capacity building programs, and water quality monitoring and assessment.



Solid Waste Management

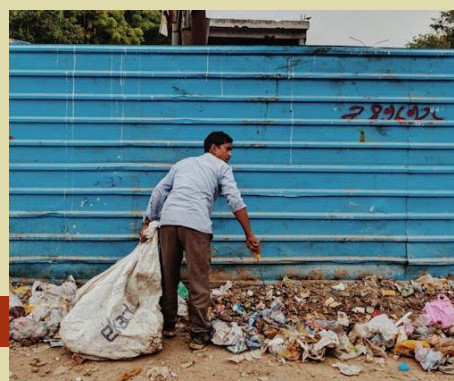


We provide solutions in the context of Integrated Solid Waste Management (ISWM) based on the 3R approach (Reuse, Reduce, Recycle). We adopt a strategic approach to sustainable management of solid wastes by developing a feasibility report of waste management, a detailed project report on every aspect of waste management, monitoring and evaluation

of ongoing projects, technical due diligence along with research, documentation and policy guidance.

Circular economy and resource efficiency

Our focus is to identify, evaluate and implement circular solutions. Our services include technical support to projects related to resource management, feasibility reports, monitoring and evaluation of the projects, risk assessment, technical analysis, etc.



Ecosystem services and well-being



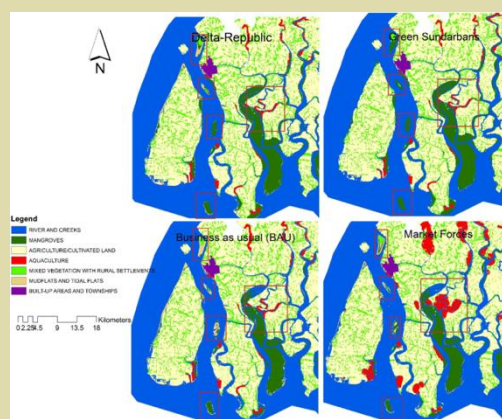
We conceptualize and implement projects on ecosystem services with a special focus on human well-being. Projects are designed based on theoretical frameworks, primary field-level evidence is produced and policy actions are devised. Apart from provisional services, we also focus on intangible values and services of ecosystems across different

geographical scales and different community groups. Under this title, we also work on Nature-based Solutions, nature-human interactions across different ecosystems, sustainable agriculture and pro-environmental behaviour. Our services include biodiversity conservation plans, ecological assessment, valuation of ecosystem services, surveys and workshops at multistakeholder levels, and capacity building programs.

Remote sensing and GIS solutions

We use Remote Sensing and Geographic Information Systems (GIS) for informed decision-building by detecting and forecasting changes. We do natural resource mapping, forestry and coastal mapping, LULC, site suitability analysis, agricultural mapping as well as scenario analysis.

Outputs are tailored to the viewer / requirement and are based on accurate 3D geolocational data such that they can be interpreted in the field in real-time, or used for setting out or further analysis.



Sustainable Tourism



Tourism that takes full responsibility for supporting economic, social and environmental safeguards of tourists and destinations.

We provide services of technical support to develop destination ecotourism, evaluation

studies for regulatory compliances and environmental audits to promote ecotourism. Under the broad term of sustainable tourism, we also work on community-based tourism, rural tourism, green tourism, and tourism value chains.

Sustainable Rural Development

The development of rural areas is our special area of interest where we look at the challenges faced by communities and, through effective community engagement, address the challenges to make the rural areas resilient and sustainable. We adopt a multisectoral approach to achieve this. We work on sustainable livelihoods, climate change adaptation, rural tourism, natural resource management, gender empowerment, rural-urban migration, and disaster management.



To know more about us:



Symbiosphere Consultants

C802 Winter Hills, Near Dwarka Morh,
New Delhi – 110056

Email: mriddhika.basu@symbiosphere.in
shabarni.roychowdhury@symbiosphere.in

www.symbiosphere.in