

FOR OPERABLE & ACCORDION PARTITIONS

Vinyl Selector



Kwik-Wall

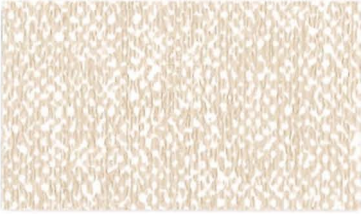
MOVEABLE WALL SYSTEMS

CHOOSE QUALITY. CHOOSE EXCELLENCE. **CHOOSE KWIK-WALL.**

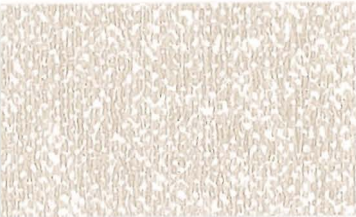
Linden



KWC-1 Ancestral



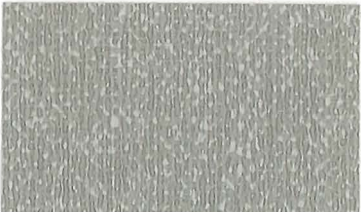
KWC-2 Porcelain



KWC-3 Rectory



KWC-4 Anglais



KWC-5 Dover Gray



KWC-6 Bartley Green

Lino



KWC-7 Snow



KWC-8 Winter White



KWC-9 Antique Vellum



KWC-10 Cirrus



KWC-11 Skylight



KWC-12 Jute

Tahiti



KWC-13 Sailboat



KWC-14 Soleil



KWC-15 Moorea



KWC-16 Stepping Stone



KWC-17 Surfside



KWC-18 Grassland

Kashi



KWC-19 Silver Fan



KWC-20 Rice Paddies



KWC-21 Wuhan



KWC-22 Gobi Desert



KWC-23 Incense Stick



KWC-24 Bamboo Grove

Sonesta



KWC-25 Chino



KWC-26 Dover



KWC-27 Pyramid



KWC-28 Peabody



KWC-29 Seaweeds



KWC-30 Clayton

Patana



KWC-31 Cotton



KWC-32 Ricegrass



KWC-33 Straw



KWC-34 Frost

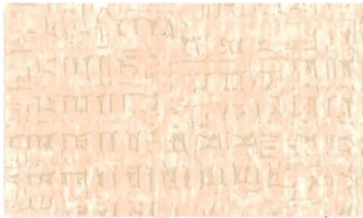


KWC-35 Rye



KWC-36 Marsh

Gridlock



KWC-37 Outback



KWC-38 Roadblock



KWC-39 Boulevard



KWC-40 Crossroads



KWC-41 Scenic Point



KWC-42 Turnpike

Chimayo



KWC-43 Tierra Blanca



KWC-44 Maize



KWC-45 Tierra Bayita



KWC-46 Sage Brush



KWC-47 Rancheros



KWC-48 Yucca

Gossamer



KWC-49 Opal



KWC-50 Shell



KWC-51 Blush



KWC-52 Monarch



KWC-53 Quartz



KWC-54 Moonstone



Kwik-Wall

MOVEABLE WALL SYSTEMS



curtition

A Division of KWIK-WALL.

Patterns and Colors shown on this card are provided
as standard selections to expedite
the production of walls

Patterns and Colors not shown on this card may be
submitted to KWIK-WALL for approval

All patterns in this collection are Type II only

For Operable walls and Accordion partitions

www.kwik-wall.com



Kwik-Wall

MOVEABLE WALL SYSTEMS

	U.S. UNITS	METRIC UNITS
Total Weight	21.0 OZ PLY	651 g PLM
Roll Width	53/54 in.	134/137 cm
Gauge	24 Mils	0.61 mm
Fabric	Osnaburg	
Tensile (Min.)	50 x 55 lbf	222 x 245 N
Tear (Min.)	25 x 25	
Federal Spec	CCC-W-408A. TYPE II	
CFAA Spec	CFFA-W-101-D, TYPE II	
Fire Testing	NFPA 101 [®] , Life Safety Code [®] NFPA 255 (UL 723, CAN S102M) Tunnel Test ¹ Class A Rating NFPA 286 Corner Burn Test ² Meets requirements for Flame Spread, Smoke Developed and Flashover U.L. Labeled and Listed	
Repeat	Vertical	N/A
	Horizontal	N/A
	Match information	Random Match, Reverse Hang

¹ When applied to GRC board with A-848-B adhesive

² When applied to 5/8" type-X-gypsum board with A-848-B adhesive

The flammability testing data, conclusions and recommendations in this report relate solely to measurement and description of the properties of materials, products, or systems in response to the heat and flame under controlled laboratory conditions and should not be considered or used for the description, appraisal, or regulations of the fire hazard of materials, products, or systems under actual fire conditions.

1010 East Edwards St., Springfield, IL 62703 • 800-280-5945 • www.kwik-wall.com