



Create the  
space you need

## Custom made Accordion Doors and Acoustic Partitions

Sourced and manufactured in the USA since 1957



|  |    |
|--|----|
| Introduction                                     | 2  |
| Series 220 Closet Door                           | 3  |
| Series 240 Room Divider                          | 4  |
| Series 440 Visifold Room Divider                 | 5  |
| Series 540 Visifold Security Door                | 6  |
| Series 640 Alumifold Room Divider                | 7  |
| Series 740 Alumifold Security Door               | 8  |
| Series 2100 Single Wall Sound Door STC 21        | 9  |
| Series 3300 Dual Wall Sound Door FSTC 33         | 10 |
| Series 4166 Acoustic Accordion Partition FSTC 41 | 11 |
| Series 4188 Acoustic Accordion Partition FSTC 41 | 12 |
| Series H3100 Acoustic Accordion Partition STC 31 | 13 |
| Series H4100 Acoustic Accordion Partition STC 41 | 14 |
| Finish Selections                                | 15 |
| The Woodfold Story                               | 16 |

# Creating space is our mission

## What makes a Woodfold Accordion Door such a great choice to close off a space, or divide a room small or large?

We offer a varied range of classic and contemporary materials to choose from including hardwood veneers, laminates, aluminum and acrylics. Woodfold doors and partitions can accent or coordinate with existing decor. Regardless of the application, Woodfold has an accordion solution to suit your design needs.

### A Woodfold door is as durable and functional as it is attractive

- Overhead suspension with no need for a floor threshold.
- Durable hardware for years of reliably smooth operation.
- ADA-compatibility options.
- Compact folded size to use minimal floor space.
- Optional perimeter seal to help keep in heat and noise.
- Optional perforated panels that allow airflow.
- Optional locks and latches.
- Curvable tracks
- Multiple meeting posts for unique installations.
- Custom sizing for a perfect fit.

### Typical applications

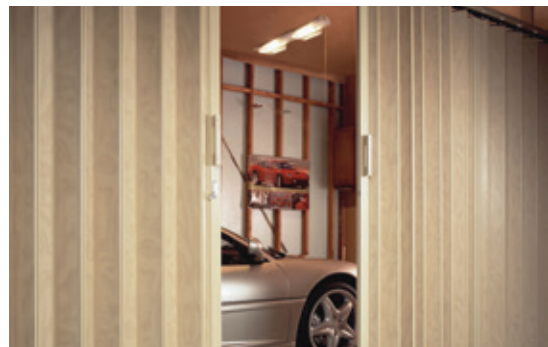
- Hotel and conference meeting areas.
- General hospitality and venue meeting spaces.
- Religious and funeral facilities.
- Senior living and multi-family buildings.
- Medical facilities and reception areas.
- Compact apartment space division.



#### Contact:

phone: [503.357.7181](tel:503.357.7181) fax: 503.357.7185

email: [woodfold@woodfold.com](mailto:woodfold@woodfold.com)





## Series 220 | Closet Door

Maximum Size 8'-0" wide x 8'-1" high • Residential applications

Woodfold's Series 220 closet door is the ideal choice when a simple and space saving solution is needed. Finished on both sides and using the same commercial grade hinged hardware system as our other series, the 220 is a perfect solution for this specific application. No floor threshold required.

### OVERVIEW

- Default stack is left unless specified.
- Not available as pairs—use Series 240 when needed
- Full length extruded swept-wing handle

### SPECIFICATIONS

**Panels:** 4-1/4" wide

**Laminate:** Wood grains, solid colors and textured Chalk laminated to MDF board (1/4" net)

**Factory finished hardwoods:** For visual warmth, hardwood veneers laminated to MDF board (1/4" net) with non-tinted finish

**Unfinished hardwood available:** No warranty

**Catch:** Magnets with strike plates  
 – Dual magnets in handle  
 – Not available with locks or latches

**Stacking space:** 1-1/4" per foot plus 7/8" for each sweptwing handle

### ADA compliant

**Widths:** Up to 8'

**Heights:** Up to 8'-1"

**Wheels:** Nylon wheels on Lexan axles

**Special Paint or Stain:** Available on MDF or veneers—sample required to match

**Track and hinge hardware:** Silver or Bronze

**Full architectural specifications are available via our website:** [www.woodfold.com/specs](http://www.woodfold.com/specs)



# Series 240 | Room Divider

Heights up to 10'-1" • Residential and commercial applications

No other accordion door on the market matches the flexibility of Woodfold's Series 240 doors, and no other is specified more often. This series delivers the high-use durability needed to successfully reconfigure space in homes, offices, schools and restaurants. Available in a wide range of contemporary finishes. Samples are available from our customer team or from your dealer.

## OVERVIEW

- Default stack is left unless specified
- Unfinished available (no warranty)

## SPECIFICATIONS

**Panels:** 4-1/4" wide

**Laminate:** Wood grains, solid colors and textured Chalk laminated to MDF board (1/4" net)

**Factory finished hardwoods:** Hardwood veneers laminated to MDF board (1/4" net) with non-tinted finish

**Unfinished hardwood available:** No warranty

**Lead post:** 3/4" x 2-3/4" aluminum with ball-bearing rollers

**Latch:** Deadlatch with thumb turn two sides

**Stacking space:** 1-1/4" per foot plus 2-3/4" for each lead post

**Widths:** No limitations

**Wheels:** Ball-bearing wheels on steel axles

**Special Paint or Stain:** Available on MDF or veneers—sample required to match

**Full architectural specifications are available via our website:** [www.woodfold.com/specs](http://www.woodfold.com/specs)



## Series 440 | Visifold Room Divider

Heights up to 10'-1" • Default acrylic (laminated and veneer available) • Residential and commercial applications

Designed to present an inviting entrance to retail and hospitality settings with moderate security needs, our Series 440 doors also serve as a unique decorative touch and can be crafted to incorporate acrylic panels with those made of hardwood or contemporary laminates.

### OVERVIEW

- Default stack is left unless specified

### SPECIFICATIONS

**Panels:** 4-1/4" wide

**Acrylic panels:**

- 1/8" thick transparent Clear and Bronze, up to 10'-1"
- Gray Smoke, up to 8' only

**Panel connectors:** Extruded flexible vinyl, matching channel frame color

**Aluminum panel frame channel colors:**

- Black, Sand and Gold up to 8'
- Bronze, Silver and White up to 10'

**Wheels:** Ball-bearing wheels on steel axles

**Latch:** Deadlatch with thumb turn two sides

**Widths:** No limitations

**Stacking space:** 1-1/4" per foot plus 2-3/4" for each lead post

**Full Architectural Specifications are available via our website:** [www.woodfold.com/specs](http://www.woodfold.com/specs)



For more information, or to find your local distributor, please call **503.357.7181**



## Series 540 | Visifold Security Door

Heights up to 10'-1" • Default acrylic (laminated and veneer available) • Residential and commercial applications

Maximizing security in retail or commercial venues doesn't mean minimizing eye appeal. Combining the smooth operation of the Woodfold hardware hinge system with enhanced security between panels thanks to a rigid PVC hinge over a steel rod, the Series 540 offers an unobstructed view of what's inside while assuring protection.

### OVERVIEW

- Security applications
- Default stack is left unless specified

### SPECIFICATIONS

**Panels:** 4-1/4" wide

**Acrylic panels:**

1/8" thick transparent Clear and Bronze up to 10'  
– Gray Smoke, up to 8' only

**Panel connectors:** Extruded rigid PVC with steel rod, matching channel frame color

**Aluminum panel frame channel colors:**

- Black up to 8'
- Bronze, Silver and White up to 10'
- Sand and Gold up to 8'

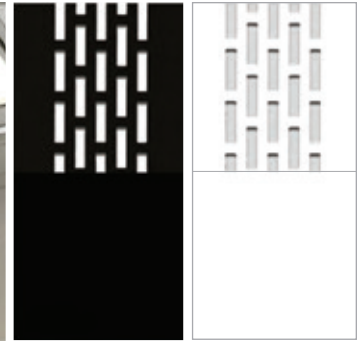
**Widths:** No limitations

**Wheels:** Ball-bearing wheels on steel axles

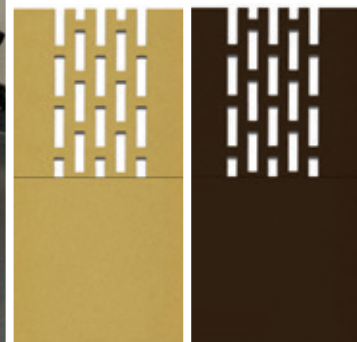
**Latch:** Weiser key lock 2 sides

**Stacking space:** 1-1/4" per foot plus 2-3/4" for each lead post

**Full Architectural Specifications are available via our website:** [www.woodfold.com/specs](http://www.woodfold.com/specs)



Series 640 and 740 aluminum panels are available in five solid and perforated finishes: Black, White, Gold, Bronze, and Silver (pictured, left).



## Series 640 | Alumifold Room Divider

Heights up to 10'-1" • Aluminum panels only • Residential and commercial applications

Woodfold's Alumifold Series 640 is the ideal choice for a variety of installations. Woodfold's exclusive steel hardware hinge system ensures simple operation as well as exceptional strength and durability. Design options like solid or perforated aluminum panels in five finishes deliver the privacy and security you're looking for with eye-catching style.

### OVERVIEW

- Security applications
- Default stack is left unless specified

### SPECIFICATIONS

**Panels:** 4-1/4" wide

- Panels available in solid or perforated style
- Frame channel is integral part of panel

**Panel connectors:** Extruded flexible vinyl, matching frame color

**Panel finishes:**

- 8' solid and perforated: Bronze, Gold, Black, White, Silver
- 10' solid: Silver, White
- 10' perforated: Silver

**Widths:** No limitations

**Wheels:** Ball-bearing wheels on steel axles

**Latch:** Deadlatch with thumb turn two sides

**Stacking space:** 1-1/4" per foot plus 2-3/4" for each lead post

**Full Architectural Specifications are available via our website:** [www.woodfold.com/specs](http://www.woodfold.com/specs)



For more information, or to find your local distributor, please call [503.357.7181](tel:503.357.7181)



# Series 740 | Alumifold Security Door

Heights up to 10'-1" • Aluminum panels only

With ease of operation and added security features, the 740 Series is designed to fit any installation with a variety of extra options including curvable track and a selection of locks and latches. This series utilizes single-piece, extruded aluminum body panels available either solid or perforated in a range of finishes.

## OVERVIEW

- Security applications
- Default stack is left unless specified

## SPECIFICATIONS

**Panels:** 4-1/4" wide aluminum

- Panels available in solid or perforated style
- Frame channel is integral part of panel

**Panel connectors:** Extruded rigid PVC with steel rod, matching channel frame color

**Panel finishes:**

- 8' solid and perforated: Bronze, Gold, Black, White, Silver
- 10' solid: Silver, White
- 10' perforated: Silver

**Widths:** No limitations

**Wheels:** Ball-bearing wheels on steel axles

**Latch:** Weiser key lock 2 sides

**Stacking space:** 1-1/4" per foot plus 2-3/4" for each lead post

**Full Architectural Specifications are available via our website:** [www.woodfold.com/specs](http://www.woodfold.com/specs)



For more information, or to find your local distributor, please call [503.357.7181](tel:503.357.7181)





STC 21 test performed by Bruck, Richards & Chaudiere, Inc. ASTM designation E336-77

## Series 2100 | Single Wall Sound Door STC 21

Heights up to 10'-1" • Residential and commercial applications • Laminates and veneers

When some degree of sound reduction is desired, the Series 2100 single-wall acoustic partitions are ideally suited to spaces that need to be divided or closed off. This durable accordion door serves to reconfigure a space at a moment's notice while minimizing distracting noise.

### OVERVIEW

- Default stack is left unless specified
- Top and bottom sweeps for sound control

### SPECIFICATIONS

**Panels:** 4-1/4" wide

**Laminate:** Wood grains, solid colors or textured Chalk laminated to MDF board (1/4" net)

**Factory finished hardwoods:** Hardwood veneers laminated to MDF board (1/4" net) with non-tinted finish

**Unfinished hardwood available:** No warranty

**Lead post:** 3/4" x 2-3/4" aluminum with ball-bearing rollers

**Sweepstrips:** White, Brown or Gray

**Latch:** Deadlatch with thumb turn two sides

**Widths:** No limitations

**Stacking space:** 1-1/4" per foot plus 2-3/4" for each lead post

**Wheels:** Ball-bearing wheels on steel axles

**Special Paint or Stain:** Available on MDF or veneers—sample required to match

**Full Architectural Specifications are available via our website:** [www.woodfold.com/specs](http://www.woodfold.com/specs)



FSTC 33 test performed by Bruck, Richards & Chaudiere, Inc. ASTM designation E336-77

## Series 3300 | Dual Wall Sound Door FSTC 33

Heights up to 10'-1" • Residential and commercial applications • Laminates and veneers

A practical solution for space, sound and heat control, Woodfold's Series 3300 sound door is a smart alternative to much more expensive options. Perimeter-sealed, acoustic-lined and incorporating Woodfold's exclusive heavy duty hardware system, this dual-walled partition functions beautifully in offices, churches, restaurants and hotel meeting spaces—anywhere needing moderate sound control.

### OVERVIEW

- Default stack is left unless specified
- Dual standard panels with acoustic sweeps
- Inner acoustic lining

### SPECIFICATIONS

**Panels:** 4-1/4" wide

**Laminate:** Wood grains, solid colors or textured Chalk laminated to MDF board (1/4" net)

**Factory finished hardwoods:** Hardwood veneers laminated to MDF board (1/4" net) with non-tinted finish

**Unfinished hardwood available:** No warranty

**Lead post:** 3/4" x 2-3/4" aluminum with ball-bearing rollers

**Track moldings:** White

**Latch:** Deadlatch with thumb turn two sides.

**Stacking space:** 2" per foot plus 4-1/2" for each lead post

**Widths:** Up to 15' single, add intermediate posts for sections greater than 15' wide

**Heights:** Up to 10'-1"

**Wheels:** Ball-bearing wheels on steel axles

**Special Paint or Stain:** Available on MDF or veneers—sample required to match

**Full Architectural Specifications are available via our website:** [www.woodfold.com/specs](http://www.woodfold.com/specs)



FSTC 41 test performed by Acoustic Engineer Eugene OR. ASTM designation E336-90

## Series 4166 | Acoustic Accordion Partition FSTC 41

Heights up to 10'-1" • 6" wide panels • Commercial applications • Five laminate finishes available

For higher sound control in meeting spaces, medical facilities, or religious institutions, this series takes sound attenuation to a higher level. High quality, with an FSTC of 41, it features a perimeter seal, acoustic lining, and heavy-duty hardware. It is constructed using dual 6" panels.

### OVERVIEW

- Perimeter seal
- Acoustic lining
- Heavy-duty hardware
- Dual 6" panel

### SPECIFICATIONS

**Laminate panel finishes:** White, Gray, Maple, Oak and textured Chalk (no hardwoods available)

**Section sizes:**

- 150 square feet movable sections
- 80 square feet for shipping

**Latch:** Cylinder latch two sides

**Wheels:** Ball-bearing wheels on steel axles

**Stacking space:** 2-1/4" per foot plus 9" for lead and anchor.

**Sweepstrips:** White, Sand, Gray, Brown

**Track:** Aluminum with wood molding

**Full Architectural Specifications are available via our website:** [www.woodfold.com/specs](http://www.woodfold.com/specs)



For more information, or to find your local distributor, please call [503.357.7181](tel:503.357.7181)



FSTC 41 test performed by Acoustic Engineer Eugene OR. ASTM designation E336-90

## Series 4188 | Acoustic Accordion Partition FSTC 41

Heights up to 10'-1" • 8" wide panels • Commercial applications • Five laminate finishes available

The 8" panel size gives an extra dimension to our acoustic accordion partitions with an FSTC of 41. The 4188 incorporates the same dual wall construction for sound reduction, but with a larger 8" panel.

### OVERVIEW

- Perimeter seal
- Acoustic lining
- Heavy-duty hardware
- Dual 8" panels

### SPECIFICATIONS

**Laminate panel finishes:** White, Gray, Maple, Oak and textured Chalk (no hardwoods available)

**Section sizes:**

- 150 square feet movable sections
- 80 square feet for shipping

**Heights:** Up to 10'-1"

**Latch:** Cylinder latch two sides

**Wheels:** Ball-bearing wheels on steel axles

**Stacking space:** 1-5/8" per foot plus 9" for lead and anchor

**Sweepstrips:** White, Sand, Gray, Brown

**Track:** Aluminum with wood molding.

**Full Architectural Specifications are available via our website:** [www.woodfold.com/specs](http://www.woodfold.com/specs)



STC 31 test performed by Riverbank Acoustical Laboratories, Geneva, IL. ASTM designation E90-86T

## Series H3100 | Acoustic Accordion Partition STC 31

Heights up to 12'-1" • Residential and commercial applications • Designer Collection vinyl (wide variety of finishes)

The H3100 accordion partitions consist of two continuous laminated vinyl covers assembled to steel pantographs supported by aluminum covered steel channel posts at each end. These acoustic partitions are easy to operate, durable and come in a wide variety of options and finishes.

### OVERVIEW

- Continuous vinyl accordion partition
- STC 31

### SPECIFICATIONS

**Vinyl Covering:** Designer Collection vinyl sample swatches are available upon request.

**Section sizes:** Up to 20'

**Heights:** Up to 12'-1"

**Widths:** No limitations

**Latch:** Privacy latch standard keylocks available

**Wheels:** Ball-bearing wheels on steel axles

**Stack width:** Extended 5-1/2"; stacked: 7-1/2"

**Stack depth:** Variable, contact Woodfold Customer Service

**Track:** Three different styles available to suit most construction.

**Full Architectural Specifications are available via our website:** [www.woodfold.com/specs](http://www.woodfold.com/specs)



For more information, or to find your local distributor, please call [503.357.7181](tel:503.357.7181)



STC 41 test performed by Riverbank Acoustical Laboratories, Geneva, IL ASTM designation E90-86T

## Series H4100 | Acoustic Accordion Partition STC 41

Heights up to 12'-1" • Residential and commercial applications • Designer Collection vinyl (wide variety of finishes) available

The H4100 accordion partitions consist of two continuous laminated vinyl covers assembled to steel pantographs supported by aluminum covered steel channel posts at each end. This series also incorporates steel strips laminated within each fold for enhanced acoustical performance. These accordion partitions are easy to operate, durable and come in a wide variety of options and finishes.

### OVERVIEW

- Continuous vinyl accordion partition
- STC 41

### SPECIFICATIONS

**Vinyl Covering:** Designer Collection vinyl sample swatches are available upon request

**Section sizes:** Up to 20'

**Heights:** Up to 12'-1"

**Widths:** No limitations

**Latch:** Privacy latch standard keylocks available

**Wheels:** Ball-bearing wheels on steel axles

**Stack width:** Extended 5-1/2"; stacked: 7-1/2"

**Stack depth:** Variable—contact Woodfold Customer Service

**Track:** Three different styles available to suit most construction.

**Full Architectural Specifications are available via our website:** [www.woodfold.com/specs](http://www.woodfold.com/specs)



For more information, or to find your local distributor, please call [503.357.7181](tel:503.357.7181)

## Finish selections

We offer a varied range of laminates in solid, woodgrain and textured vinyls to suit any installation. We can also custom match paint and stain colors on request.

From the natural beauty of stunning hardwood veneers to fun, bright, and durable laminates and vinyls, there's a Woodfold Accordion Door or Partition that fits perfectly.

Due to the nature of the Accordion Series, some finish selections are only available on some select series. Please contact your dealer or Woodfold ([woodfold@woodfold.com](mailto:woodfold@woodfold.com) or 503.357.7181).

Finishes shown are representative of availability at time of printing and may be subject to change. Please check our website for the most updated selection.



Maple



Oak



Driftwood



H Series Vinyl

**Full specifications are available via our website: [www.woodfold.com/finishes](http://www.woodfold.com/finishes)**

## Logos, murals and special order laminates

When you want to reinforce your brand or create a more customized look, we can apply a stock or custom image on your Woodfold Accordion Door. We can also provide doors with high pressure laminates which can be quoted upon request. These options are available on the 240 and 2100 series doors.



# The Woodfold Story

Our work reflects the way we live



## Who we are

Woodfold is a manufacturer of custom built products and sells through dealers. We are committed to providing a seamless experience from order entry to receipt of order through our friendly and dedicated customer service team.

Woodfold is customer centric and synonymous with quality products and exceptional customer service as well as being a trusted business partner.



## We work lean and clean

At Woodfold, we've embraced Lean Manufacturing, making better use of our space, precious raw materials, and each person's time. It's a constant process of improvement that ensures consistent quality.

Minimizing our impact on the environment has always been an important part of the Woodfold culture.



## We do the right thing

We operate with the fundamental belief in doing the right thing.

As an employee-owned company, we strive to make a positive impact on our people, community, suppliers and customers.



Woodfold Manufacturing • 1811 18th Avenue • Forest Grove, Oregon 97116  
phone: [503.357.7181](tel:503.357.7181) fax: 503.357.7185  
email: [woodfold@woodfold.com](mailto:woodfold@woodfold.com) | website: [www.woodfold.com](http://www.woodfold.com)