

Red Room



CAUTION

If you are looking at this catalog because you...

...read or watched Fifty Shades of Grey and are enthusiastic about starting your own BDSM collection,

please understand there is a LOT more to BDSM than what Ms James broached in the series. BDSM is an intimate form that relies on communication, safety, and trust. BDSM is more than tie-ups, butt plugs, and braided hair. We implore that before adventuring into this life style, you & your partner have explicit, open conversations to make sure expectations are clear. Because we offer items for those just starting out to those enhancing their dungeons, there may be things in here which may be unexpected.

...are looking to expand your BDSM collection,

this is where you'll find everything from fuzzy cuffs to things that will help you continue to build your dungeon, or even find something that will excite those with a higher pain tolerance. If there is something you're looking for you do not find here, please speak with your Pleasure Specialist, as we may be able to obtain it for you.

Please note: Simple Pleasures, its distributors, and/or Pleasure Specialists, cannot be held responsible nor legally liable for any negative repercussions based on your choices or the choices of your partner. We advise to always be safe, be educated, and make sure all materials are being used according to manufacturer's recommendations. Failure to do so may result in loss of trust, bodily harm, or death.

What's Inside

| | |
|--|-----------|
| <i>Contract & Jewelry</i> | <i>1</i> |
| <i>Collars, Leashes, & Gags</i> | <i>2</i> |
| <i>Nipples & Clit</i> | <i>9</i> |
| <i>Cuffs, Restraints, & Positional Bondage</i> | <i>15</i> |
| <i>Masks & Hoods</i> | <i>31</i> |
| <i>Sensations & E-Stim</i> | <i>35</i> |
| <i>Spankings</i> | <i>45</i> |
| <i>Creative Play</i> | <i>49</i> |
| <i>Animal & Pet Play</i> | <i>51</i> |
| <i>Ass Play</i> | <i>57</i> |
| <i>Cages, Weights, & Stretchers</i> | <i>60</i> |
| <i>Swings & Furniture</i> | <i>72</i> |
| <i>Machines & Bedding</i> | <i>82</i> |
| <i>Aftercare</i> | <i>87</i> |

*"Take your Pleasures
seriously"*

~ Charles & Ray Eames



2025

You're Mine

Contract



BDC399

When entering into a D/s or M/s relationship, it is important to discuss goals, needs, desires and boundaries. The negotiation process is a great way to open up communication. Written by an attorney, this contract is ideal to negotiate/formalize a BDSM relationship, help partners talk about all the important aspects of the relationship, prior to play, and can be personalized to suit every unique arrangement. Make it

as fun, hot, strict (even TPE) or as lenient as desired. This contract* goes over Duration of arrangement, Goals, Rights/Responsibilities, Safety, Areas of Control, Limits, Terms of Exclusivity, Switching, Punishment and Rewards, Termination, Amendment and Renewal. \$19.00

*Please note: No contracts for BDSM relationships/activities are legally enforceable, even if written especially for you by your attorney. Although this BDSM Contract is drafted by an attorney with the look and feel of a legal document, it is intended for entertainment purposes only and it is NOT legally binding.

Joined

Adorn yourself and your partner with a constant reminder of the surrender & commitment. The attractive and subtle design of this cuff and dog tag style key necklace set make them perfect as an everyday accessory that symbolizes your power dynamic. Bracelet can only be removed by their Master's or Mistress's key, sitting within the cut out of a tag hanging from a chain; a reminder of the pride and responsibility that comes with ownership. These beautiful sets allow you to put comfortably put your bond on display. Scratch resistant, nickel-free tungsten steel. \$64.00



JND017

Necklace chain: 19" long
Bracelet: 6.25" circumference,
.25" wide



JND018



Silver



Rose Gold

Cuffed



This subtly suggestive necklace is dainty and elegant so that you can display your sensuality in a classy way. This lovely piece of jewelry is appropriate for a Dom or a sub. The lobster claw clasp makes it simple to take off or put on, but will not come undone unintentionally. Made of zinc alloy, the cuffs and curb link chain are nickel free so as not to irritate sensitive skin. \$16.00



20.5" total length

JND019

COLLARS, LEASHES, & GAGS

Hearts Collar



HTC286

Turn up the heat with the Hearts Collar and add a touch of mystery and seduction to your everyday look!



Crafted from sumptuous faux leather, this choker style necklace is designed with connected hearts and can be locked in place for ultimate control and submission. Whether you're looking to spice things up in the bedroom or simply add a hint of naughtiness to your daily style, the Hearts Collar is sure to capture attention and leave them wanting more. So go ahead and indulge in a little flirtatious fun - you know you want to! Adjustable from 15" - 19" \$24.00

Elvira Collar



EVC272

The ultimate adornment for alluring bondage! Designed for neck sizes 11.5" - 17.5" and garnished with a ruby jewel and gold charm, Elvira features an adjustable buckle closure. Nickel free. \$39.00

Jezebel Collar



JZC271

Perfect for bottoms! Designed for neck sizes 11.5" - 16" and embellished with gold accents and pearls, Jezebel features an adjustable buckle closure and O-ring for a tether or leash. Leash sold separately. Nickel free. \$39.00





Word Band Collars

Make a statement without saying a word with these sassy leather collars! An intimate, visually erotic accessory, they are handmade by skilled craftsmen using quality oil tanned leather. Snap settings to fit 13, 14, 15, and 16" to ensure a snug fit. Perfect for a night at the club or a hot and heavy BDSM scene, these naughty collars will ensure all eyes are on you! \$29.00 each



Baby Girl
WORD249



Bad Kitty
WORD241



Bad Girl
WORD255



BBC Slut
WORD256



Bitch
WORD242



Cub
WORD257



Cuck
WORD258



Cum
Dump
WORD259



Daddy
WORD246



Daddy's Boy
WORD254



Daddy's Girl
WORD250



Eat Me
WORD251



Fuck Me
WORD243



Fuck Slut
WORD240



Good Girl
WORD260



Hers
WORD261



His
WORD262



Owned
WORD263



Punish Me
WORD264



Queen
WORD252



Sexy
WORD253



Sissy
WORD245



Slave
WORD247



Slut
WORD248



Whore
WORD244

ORC240



O-Ring Collar

Adorn your neck with this beautiful collar; O-ring is placed right at the center to accentuate the curve of your neck. Attach a leash or other adornment to the ring. Wear it at an event to show off your status. The soft, inner lining is gentle against the neck & sensitive skin. The PU leather collar is adjustable for the perfect fit. \$24.00



Dark Hearts

Who said you can not be sweet and innocent and a little bit naughty all at the same time? Look pretty in pink or seductive in black, be it out on the town or for a naughty night in! This trendy choker gives off unmistakable BDSM vibes. The metal heart at the center makes it a romantic gift for a submissive partner. The cruelty free vegan leather strap is attractively thin with snap closures that adjust to the perfect fit, and the soft inner lining is comfortable and luxurious! Adjusts 13.5" - 17.5" Nickel free \$21.00 each



DHT246



DHT247



Black



Pink

SHT246



Dark Hearts with Spikes

Flag your kinky side or use this as an edgy fashion accessory! This spiked collar makes any neck look great! Matches well with bracelets, wrist cuffs, body harnesses, and leather boots, and is easy to take on and off. Comfortable, and stylish, but also a reminder that your lover placed it on you and gave it to you as a gift. More than an accessory; it's a reminder that when the sun goes down and you go out to play, you are wanted, protected, and desired. Adjusts from 14" - 15.75" \$24.00 each



SHT247



Black



Pink



Super Spiked Collar



Beautiful leather collar with 8 - 1" metal spikes lined up in a row on the back of the collar. The leather is soft, flexible & fully adjustable buckle closure. Approximately 20" x 1" \$94.00

Locking Heart Collar



Lock them safely in to your heart by placing this collar around their neck and turning the key! This PU leather collar has a nickel-free, heart-shaped lock at the center that not only creates a pleasing aesthetic for the wearer, it functions as a lock, too! Simply take one of the two included keys and turn them into the hole at the center of the lock to lock up or release the wearer from their collar. The inner lining of the collar is soft to avoid chafing of the neck. Includes 2 keys. Adjusts from 13.5" - 16.5" \$26.00



Possession

Make your submissive status obvious to everyone with the Possession locking collar! Wear it for short scenes or for long term wear such as weeks or months at a time, as this subtle and elegant collar locks into place with the provided hex key and stays on until you've been released! Enjoy the weight and feel of the metal on your skin as a constant reminder of your Dom/Sub relationship and your partner's love. Made out of durable, strong, and nickel-free stainless steel, it's easy to clean and perfect for sensitive skin types. To clean, simply use water while it's still on during a shower. If it's taken off and requires a thorough cleaning, boil it in hot water. Small collar is 14" in circumference, Medium is 15.2", Large 17.6" \$109.00 each



Small
PSN274



Medium
PSN275



Large
PSN276

Tracker

Find your phone? How about finding your collared sub? With this chic, faux leather tracking collar you can discreetly track your sub wherever they may be.



TRK271

It's adjustable, lockable, and has a soft inner lining so they can be comfortable while wearing it. Now, most subs wouldn't dare run off on You, their Mistress or Master, but every now and then you get a bratty sub, or one that simply got lost. Wouldn't it be nice to know where they've gone, especially if they happen to have a gagged hood on? Your collared partner or client may be a wild, rambunctious and curious puppy!



Those do tend to scamper off when they find other pups to play with! Luckily this collar is perfect for keeping a watchful eye on them even when they're out of sight. The adjustable metal buckles are nickel-free and ensure not only a secure fit but a classy look for a very special pet, playmate or submissive. And even when not in a scene, they can wear this collar comfortably throughout the day and feel proudly owned and cared for. The collar is specifically designed to fit an Apple AirTag tracking device, sold separately.

Adjustable from 14" - 16.75" \$56.00

Black Leash & Collar

Feeling like leading or following? This soft collar attaches with velcro for adjustable play & features a D-ring to hook the 48" nylon leash securely for active play. Snap to a pair of handcuffs for added fun! \$21.00



LSH243

Sinful



SIN244

Add a spark of excitement to your playtime! Sinful is an adjustable collar & leash, and is made of stamped vinyl around a neoprene liner ensuring no unnecessary discomfort to your play partner. The high-quality construction and materials ensures worry free repeated use & extended wear time.

\$31.00 each



Black & Pink



Black



SIN243



Scarlet



SCL244



Take a walk on the naughty side tonight and slip this exhilaratingly sexy collar around your neck! You'll love the luxurious dual-sided collar with supple leatherette pressing gently against your skin. Or, if your dominant dishes out a firm punishment, you'll revel in the soft bite of leather against your neck. Detach the collar & wear it as a naughty necklace like a sensuous secret hidden in plain sight. It's the perfect combination of restraint and comfort! \$61.00

Diamond Studded Collar & Leash

Get ready to please or receive! Glamorously tough, the perfect combination of firm (faux) leather and glamorous diamond studs will turn you into the star attraction! This adjustable collar is gorgeous on it's own, and even better with the leash.



DCL281



The collar adjusts to 4 different sizes and has a sturdy, yet comfortable feel. The leash offers the right amount of movement for both comfort and restraint. The perfect addition to a very hot kind of trouble. Set your dark side free! \$49.00

Chained & Tamed



Strap them in - things are about to get hot! Enhance your next scene with Chained & Tamed - expertly designed to keep your partner at your mercy. Use all the pieces together or

interchangeably for optimum positioning. Begin your next session with the posture collar for added control, add the double wrist cuff to lock their hands together and the double ankle cuff to keep them in place. Connect the cuffs and collars how you see fit and exude your power over them. \$93.00



CTM219



Bedroom Bliss Kit



BLS215

Indulge in vegan leather that looks and feels amazing! This set includes wrist cuffs, ankle cuffs, a collar with braided leash, and

2 cuff connectors. Wear it yourself or surprise your partner and enjoy how kinky your evening and relationship can become! All cuffs and the collar are adjustable. Use the buckles for a custom, comfortable, and snug fit. All metal is nickel-free for sensitive skin and has a gorgeous, golden color that stands out against the black and red leather. The straps have D-rings so you can attach wrist and ankles together or connect other bondage gear to it! \$139.00



BLS216



Red Black

Ball Gag

Take control of your fantasies tonight!

Designed for comfort, the firm, non-toxic rubber ball has breathing holes for your willing submissive.

The adjustable leather strap

totals 10" in length. Adjust the buckle for the perfect fit. Ball Diameter: 1.6" (4 cm)

\$20.00



Bite Me

Sexy just got a little bit sexier! Nickel-free anodized hardware, aesthetically striking embossed vinyl & lined in soft & durable liquid-play friendly neoprene.

\$19.00



BME260



BME261

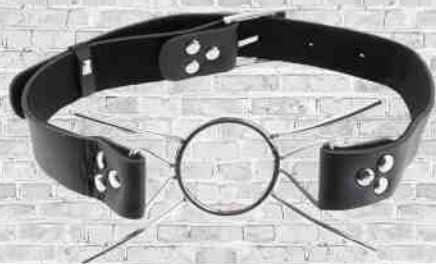
Black Pink

Open Mouth Gag

Open wide and say ahhh! with the Open Mouth Gag! This sexy o-ring gag has 1.75" inside diameter. With the sturdy ring gag held securely between their jaw, your subject will not be able to say a word, while their mouth is propped wide open and easily accessible! \$20.00



OMG217



Spider Gag

Take fetish to the next level! When wide open is not wide enough, Spider Gag will get the job done! This extreme gag consists of a steel ring with four curved metal legs attached to the ring. The gag and legs prevent the mouth from closing, leaving your subject's mouth wide open for whatever you wish to put in it. The diameter of the ring is 1.5" and the gag connects to a leather strap that buckles in the back, keeping the gag firmly in place. One size fits most. 90 days warranty. \$35.00

SPD213



06211



Ball Gag & Clamps

Tease & silence your subject with these naughty Ball Gag & Clamps duo! The gag consists of a 1.75" wide rubber ball, connected to a sturdy leather strap that adjusts to fit most. The two chained nipple clamps are made with durable metal clips and covered in soft rubber liners. The amount of pressure you apply to the nipple is adjustable by turning the tension screw. You are in control over when how often your subject can speak. \$46.00

O-Ring Gag & Clamps

ORQ241



Get your lover to open wide and say AHHHH! The gag consists of a small metal O-ring wrapped in faux leather, connected to two sturdy faux leather straps. Two chained nipple clamps keep the nipples perky, and the coated clamps easily adjust to fit your desired tension. The rubber tipped clamps are adjustable, as well as the straps. Pull the ring tight & keep the mouth open wide!

Nipple clamps are not removable & product does not come with the open bra shown. \$31.00



CNC262



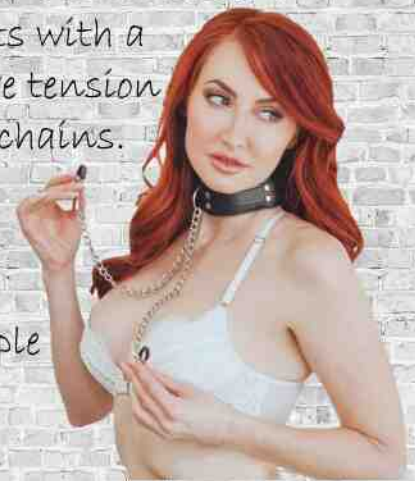
Collar with Nipple Clamps

Gorgeous, vegan leather collar with attached nipple clamps provides constant stimulation.

Soft, double-layered, hand-stitched, PVC collar adjusts with a roller buckle closure. The two coated nipple clamps have tension adjustments and are attached to the collar with 10.5" chains.

Metal D-ring allows attachments from other devices.

The metal chain connects the link chain to each individual clamp. Alligator style ends are tipped in removable black rubber to add comfort. Perfect for nipple stimulation and other sensitive areas. \$36.00



TES799

Tease Me

Tease me,
please me!
These
adjustable
clamps will
bring new

sensations into the bedroom and add eye candy with the colorful bells! Black rubber tips are removable for added sensation. Assorted colors. \$12.00



PIN799

Pinch Me

Pinch Me clamps are adjustable nipple clamps with a simple metal band to adjust the pinch. Ends are covered with removable phthalate-free black PVC. \$18.00

Playful Clamps

Playful Clamps are an adjustable, nickel free, non tarnishing clamp that adds beauty and seductiveness! Tease and be teased playfully! \$18.00



Black



Silver



PLY796

PLY795



Broad Tip Clamp

Broad Tip Clamps offer a range of evenly distributed pressures for a variety of sensations! The width of this clamp allows for a delicious distribution of sensation over the entire nipple. Relax and explore the breadth and depth of nipple sensation.

BRD791 Increase tension via pressure screw. Rubber tip allows for a better grip, and the fine, silky chain is visually appealing. \$24.00

Ring Clamp

Adjustable Ring Clamps can be moved to the perfect tightness and the O rings below can be attached to other bondage equipment to keep your lover right where you want them. If more intense play is desired, the rubber tips can be removed for a metal-on-skin sensation, or you can add weights! \$27.00



BLY796

POWER GRIPS



PGP790

4 - Points

Explore elevated sensation with 2 fully adjustable, screw-down 4 point press, & teasing weights with a power grip silicone cote. Clamp anywhere on the body & enjoy every rush of pain & pleasure with every tug or swing of the weights! \$46.00



Bells



PGB792

Tighten the screws to exactly the pressure you desire, and pull on the chain for a satisfying sensation with the balls ringing with pleasure! The bells and chain add sensuality and look sexy as hell! \$29.00



PGN793

Chains

Explore elevated sensation with 2 fully adjustable clamps, screw down 4-point press & teasing chain. Clamp anywhere & enjoy every rush of pain & pleasure! \$36.00

Crossbars

Push sensation to the next level! Elevated sensations come with the 2 fully adjustable clamps with unique crossbar design. Enjoy every rush of pain & pleasure while the crossbars hold tight! 1 year warranty. \$39.00



PGC791





Vise Press Clamp

VIS792

A good fit for practically any nipple, adjusting fluidly and effortlessly, allowing for precision intensity. Turn the thumb screw to tighten. The tighter, the more painful and the less slippage. \$30.00

Tiered Clamps

The exotic fetish body jewelry is designed for sensual seduction and exotic pleasure stimulation. The mini clamps are attached together via a sturdy, high quality dual chain that increases intimate sensitivity and sensual satisfaction. The teasing clamps are suitable for all and complement fetish play. Use the clamps with hardening arousal gel or a quality lube to increase stimulation and to extend nipple play. Tiered Clamps can also be creatively used on other sensitive areas of the body. \$26.00



TRD263

Triple Chain



TCN790

The stunning aesthetic of these unique, extreme, non-adjustable nipple clamps continuously pinches and grips for the perfect combination of pleasure and pain. Easy to use, these clamps can be utilized quickly and efficiently in the heat of the moment, or more ritualistically during your play scene. Attach weights to the chains for additional sensation play to send your masochist over the edge. This beautiful set of clamps is not only stunning to look at, but will provide the stimulation that your partner craves. Plus the ends are not covered with a covering on the tips. \$36.00

Rock Hard

Make your nipples Rock Hard with pleasure! Made with durable metal clips and covered in soft rubber liners, these clamps are perfect for everyone. The amount of pressure you apply to the nipple is adjustable by turning the screw, while the two chains give you subtle stimulation with each movement. \$29.00



RCK799





Jaws



A little pull, a playful pinch - is it pain or is it pleasure? Act out all your wildest fantasies with these stunning black jaws. The Daddy of all clamps, Jaws clamps are definitely not for the meek! \$34.00

JAW280



MC796

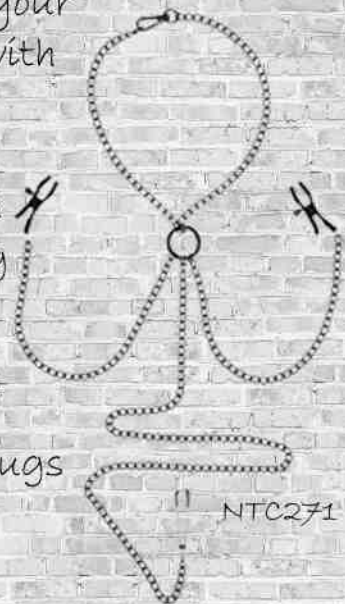
Magnetic Nipple Clip Clamps

These weighted magnetic clamps add a steady, pulling sensation to the nipple clamp experience. Adjustable alligator tipped nipple clamp with adjustable 6 oz magnetic weights. \$21.00



Ignite Clamp Set

Ignite your passions and take intimacy to sensational new heights with this Nipple to Clit set. Perfectly crafted for use both in and out of the bedroom, feel the illustrious black chains drape down your body from the connected chain collar. Tease yourself with attached nipple clamps to add pressure and arousal to your most sensitive areas while a third tweezer clamp stretches down to your clit for tantalizingly seductive tension. Perfect to create heightened experiences during sensation play or as a playful reminder of your submissive place as it's worn under your clothes. Secure and comfortable, the Nipple to Clit Set allows you to reign in your pleasure however you like as it tugs and teases with every move. \$44.00



NTC271





ENC269

Encompass

With this Chained Collar and Clamp Set, you can connect your play thing's sensitive areas while adorning them with a seductive chain collar. The clamps feature vinyl coated ends and will provide constant stimulation. Use your imagination: this devious set can be used on the male anatomy as well! \$68.00



Black Jewels

Make your nipples & clitoris perk with pleasure with this beginner-friendly nipple & clit jewelry! With each movement of the lightweight chain, the soft adjustable braids gently perk & massage your most sensitive spots. Enjoy explosive stimulation by spreading the metal clamp to place your clitoris through the teardrop. \$26.00



JWL794

Goddess

Goddess is used to add to a woman's sex appeal with it's non-piercing stunning beauty. Each clitoral clip measures 4.25" \$12.00



GDS785

GDS784



Crystal

Pearl

Teasing Heart

From the Bijoux luxury collection of clitoral adornment, Teasing Heart has been carefully chosen to sensually accentuate your clitoris and provide orgasmic sensations!



HT261

\$21.00





Ms Pussy

PSY223

Ms Pussy's fully adjustable vaginal clamp and the chain of the leash are made of iron & zinc alloy. The 2 small screws PVC tipped screws are easy to grab and rotate. The end of the chain has a PU leather handle and the chain can be attached to the top of the clamp to tug at your labia and stimulate your pussy! Run the clamp under warm or cool water first for sensational temperature play! Make sure there is some circulation already going through the labia and clitoris, then begin to gently tug and at their labia so you can grab them without discomfort. Attach the chain leash and play with tugging at their labia to tease and arouse them! Lead them around by the pussy for fun, and see what else can be stimulated as well! \$99.00



CUFFS, RESTRAINTS, & POSITIONAL BONDAGE

Naughty Knots



KNT392

Learn the ropes of erotic bondage with a discreet knotty guide. Follow step-by-step illustrations & discover how to restrain your partner simply and safely. You will also learn how to fashion a suggestive rope corset, a crop for spanking, and other bedroom tricks that will have you bound for adventure! 224 pages \$14.00

Scissors

The perfect tool to safely free your lover from bondage rope, tape, tape, poly wrap, zip ties, or other soft bondage materials. A rounded, protected tip & angled handle helps protect skin. Ideal if you need to quickly release your captive, for medical scenes, or cutting off clothing! A must have for every bondage enthusiast, even when you're just starting out! \$13.00



SCI200



SC1201

Heavy Duty Bondage Scissors

These are a dependable pair of shears every dungeon can count on! Perfect for cutting rope or bondage tape thanks to its durable, stainless steel blades and blunted tip. The carabiner handle makes it easy to keep close at hand and on your person. The sharp serrated blade easily cuts through rope and tape, making it easy to set your partner free in case of emergencies for a quick escape. The blunted safety tip protects skin during use and easily slips under restraints. The authentic usability of these scissors also lends itself well to medical role play. Put on your sexiest pair of scrubs and add to your tantalizing medical role play collection! \$19.00



SC205

Snap Hooks

These double-sided hooks have a sliding button on each side that lowers the loop closure bar for a secure hold. Not only do these double-sided snap hooks enable a BDSM enthusiast to connect almost anything, snap hooks can also be connected to one another to make an impromptu chain if one is needed. A great addition to your BDSM toy bag! 🌸 Single Hook \$6.00

🌸 2 pack \$12.00 🌸 4 pack \$21.00

Sash

Give your restraint play a silky new touch with these incredibly soft but secure restraints. The fusion of helplessness and luxury makes for an intensely erotic experience. Ultra versatile & easy to use, the only limit to their use is your imagination! Wrap them around ankles, wrists, or to use one as a blindfold & one to gag your captive concubine. \$21.00



SSH206



PLAY208

PLAY204

PLAY206

Playtime Tape

Bondage tape that sticks only to itself!

\$14.00 each

🌸 Black

🌸 Pink

🌸 Red

Japanese Silk Rope



Japanese Silk Ropes: the art of captivation. Silky ropes for Shibari bondage. Silky, soft confinement for your concubine. Highly versatile and easy to use, the silky, alluring texture is pleasing to the touch, and rope will not chafe or damage delicate skin.



Perfect for both bondage beginners and experienced players.

32 ft \$24.00 each



Black



Purple



Red

Hemp Rope



100% Natural Hemp Rope has been braided to eliminate the possibility of



opening up when contorted. Providing superior strength, braided rope helps benefit from reduced stretch characteristics, making this one of the most secure natural rope options available for Shibari and enthusiasts seeking the highest quality in secure Hemp rope. Available in 5 and 10 meters (approximately 16 and 33 feet)



5 meters \$21.00

HRP237



10 meters \$26.00

HRP238

Polyester Rope



PRP236

Suitable for Shibari and other rope play, this soft rope is made from 100% polyester. Tassels at each end for elegance and softness. Rope restraint play can be a fun and exciting way to add an element of BDSM to your intimate experiences. It allows for a level of control and vulnerability that can be both physically and emotionally fulfilling for both partners. Polyester ropes are strong, durable, and easy to work with, making them a popular choice among practitioners. They are also relatively affordable, which is a bonus for those just starting out with rope restraint play. 30 ft \$28.00



Jute Rope

This natural Jute Rope is perfect for purists or naturalists who love the look and feel of natural fibers! Jute is strong, long lasting and has its own unique texture and smell. Its earthy scent and slightly rough, stimulating fibers can be pleasing to the nose and skin, creating an unparalleled rope bondage experience. As you practice Shibari or Kinbaku Rope Ties, the Rope softens the more you use it and takes on the oil from your body and hands. Jute is similar to Hemp and is a highly personal type of Rope that some consider more intimate than synthetic fibers. This rope is twisted and coreless, and less likely to slip than nylon or silk ropes so your knots stay in place as you tie up your partner. Available in 25 and 50 feet



25 ft \$29.00

JTE233



50 ft \$41.00

JTE234

Ultra Fuzzy Cuffs

Let your lover take the lead and indulge in sensationally enhanced

pleasure with the ultra Fuzzy Cuffs! These versatile handcuffs are ideal for experienced restraint lovers, blushing beginners or couples looking to experience with dazzling bondage play. Secure your lover's hands behind their back or around bed posts for pure ecstasy with these enhanced, adjustable, durable faux fur covered metal handcuffs with lockable design. These commanding cuffs are complete with 2 release keys and a safety release latch in case of unexpected interruptions. \$22.00

FCS214



FCS213



Black



Pink



Purple



White



FCS211

Chrome Cuffs

Heavy-duty, nickel-free, non-tarnishing cuffs with safety release + 2 keys. Safe and pure for body and pleasure. \$39.00

Ø 2.5"

Chain length 19"

SCUF206





Wicked Cuffs



These bracelets shows you mean business! Wicked Spiked Handcuffs & Ankle cuffs each come with 2 rows of skulls or spikes and a sturdy, detachable metal connection. Made of high-quality black leather and dark gray metal, these Wicked cuffs look incredible with your wardrobe and can always come in handy! \$36.00 each



Rouge Leather Cuffs



These exquisite pairs of leather wrist and ankle cuffs are soft and comfortable enough to be restrained for a lengthy time - perfect for both novice players or those more advanced. The buckles are fully adjustable. The removable chain allows you to be chained up in various positions while being able to add attachments to the D-ring.



The soft leather lining of the padded cuffs offer comfort during playtime and includes a pad lockable buckle allowing your sub to be even more restricted.



Hand Cuffs \$68.00
Padded Hand Cuffs \$99.00
Ankle Cuffs \$58.00
Padded Ankle Cuffs \$104.00



Security Cuffs



These Security heavy-duty cuffs will keep your submissive partner securely restrained while you live out your fantasies! The heavy-duty stainless steel is strong and weighty against the wrists and ankles, creating an authentic feel to your prisoner pleasure session. These are the perfect restraints for your collection if you're into some serious bondage play.



Ankle Cuffs \$152.00
SEC214

Hand Cuffs \$141.00
SEC213





CRV219

Crave ID Cuffs



CRV222

Beige / 24k Gold

Adorn yourself in pleasure!
Silicone stacked bracelets designed
as a reminder of self-love and light

Pink / Rose Gold

intimate play. Wear your desire on your sleeves; jewelry is an expression of self. These part bracelet, part handcuffs for light intimate play are statements of self-love and personal power. You can wear them stacked together as gorgeous bracelets or as traditional



CRV221

Black / Silver

cuffs. Each Crave cuff is designed with silicone and the hardware is strong stainless steel. They are adjustable from 6.75" - 8.5",



CRV220

Black / Rose Gold

are completely waterproof, and come with a 1 year warranty. \$124.00 each



ASB209

Spreader Bar I

Open wide! This beginner's metal Spreader Bar will put you or your partner in the right position for pleasure every time. Attach the adjustable ankle cuffs and your subject won't be able to close their thighs. Try new positions and scenarios you never dared, and do it all with easy access. They'll squirm around and squeal, but they won't get out! The detachable cuffs have a comfortable soft-neoprene inner lining that's easy on the ankles. \$57.00

Spreader Bar II

This tubular steel leg spreader with black leather cuffs allows you to put your lover in a spread leg position that will help you achieve deeper penetration. You can also hold onto the bar to increase control in face-to-face positions with the added bonus of restricting your lover. Bar without extension is 24", and with extension up to 38". \$127.00



SBR210



Spreader Bar & Cuffs

Act out your naughtiest power play fantasies! Four faux leather, lightly padded, adjustable cuffs in signature red and black, buckle comfortably around wrists & ankles and clip to the spreader bar and each other any way you can dream up. The strong, solid spreader bar's rings are firmly welded in place, so there's no escape! Imagine your ankles cuffed to the farthest ends of the spreader bar, leaving your most luscious bits on display and accessible for your lover's wicked pleasure, or your arms spread and immobilized while they tease and torment every inch of you.

The four attachment points and swivel snap clips on each cuff even make hog tying or multiple partner play possible! \$104.00



Over the Door Restraints



Pin your lover against the door and take them standing up! These sturdy over the door restraints allow you to live out your spicy bondage fantasy while you screw your partner in an arousing new way. Slip the dowels over the top of the door to the other side, before



DOR291

shutting the door. Strap your play thing into the comfortably padded cuffs. They adjust from 5" - 9.5" to fit most sizes and the buckles are even lockable so that you know your lover is securely trapped until you are finished playing with them. \$49.00

Door Jam Cuffs



DJM299

Open the door to your fantasies! Just slip the straps the door and close the door. About 8.5" of the strap will attach to the cuffs, then slide the cuffs on top of the door for wrists or under the door

for ankles. Leaves no marks and great for hotels and no tell motels. Nickel free. Set includes 2 Wrist/Ankle cuffs attached to 2 door straps. \$39.00



Thigh Cuffs



TH1204

Your plaything will not be able to move their wrists when you bind them with this unique cuff set. Each restraint buckles around the thigh & connects to a wrist restraint. All four buckles are made with a unique locking system that allows you to keep them captive. Each wrist and thigh restraint is fully adjustable and padded for comfort. Put them into whatever position you desire and they will be trapped for your enjoyment! \$69.00



Thigh cuffs adjust between 20.5" - 26"
Wrist cuffs adjust between 7" - 12.5"

Doggy Style



Doggy style helps to bring greater ease, intensity, satisfaction to a tried-and-true classic. Changing penetration from 90° to 45°, the seemingly simple design targets several aspects of both your needs. Doggy Style compresses the vaginal canal for a tighter sensation, gives greater G-Spot access, and relieves stress on the lower back - relieves stress on the lower back - resulting in a mutually satisfying & deepened experience. Plus size's pad is 7" longer and 1.5" wider than the original.



Original \$31.00
DGY297



Plus Size \$36.00
PD297

Spread Eagle

Get the perfect angle every time with the Spread-Eagle Sling! Let your imagination take you beyond your physical limits with a little help from this simple position aid. Sturdy nylon straps comfortably hold your legs in place so they won't tire when the action heats up, allowing you to get closer and deeper than ever before. The neck strap is padded for extra comfort, and the the nylon straps easily adjust to fit most sizes. Enjoy new positions you never thought were possible! \$41.00



EAG201





Hog Tied

Take total control over your lover's every move with Hog Tied. This easy to use kit includes neoprene wrist and ankle cuffs, a heavy

duty metal hogtie, and satin love mask. Enjoy the thrill of being hogtied without having to worry about complicated techniques & tying elaborate knots. The cuffs attach to the hogtie with spring

loaded metal clips and easily adjust with velcro to fit most sizes. \$53.00



Thigh & Wrist Hog Tie

Spice things up with these captive restraints! Made out of vegan

leather, they are sexy and cruelty-free (except for whatever mean games you

play in the bedroom!) Enjoy the feeling

of being hogtied, cuffed to your ankles, and used from front or behind! The set includes 2 thigh cuffs, 2 wrist cuffs, 2 ankle cuffs, 2 cuff connectors, and 1 hog tie connector.

All metal is nickel-free. Use

the multiple D-rings to create a variety of restrained positions and make any night a little more steamy and fun! \$136.00



Thigh cuffs adjust from 18" - 25"

Wrist cuffs adjust from 5" - 9.75"

Ankle cuffs adjust from 6" - 12"

Cuff connectors are 7.4" long (including clips)

Hog tie is 12.8" x 12.8"





ABN203

Arm Binder

Trap your submissive arms behind their back, while you have your way with them. Made with locking buckles, your plaything will be thoroughly trapped while you put them in any position you desire! Each arm strap is adjustable to accommodate many different sizes, wrapping around the biceps and forearms to keep your sub fully restrained. This bondage accessory will elevate your play sessions with its unique and attractive design! \$84.00

Horizontal strap 9" across Vertical strap is 8"

Bicep straps adjust from 9.5" to 15.75" in circumference

Forearms strap 17.5" in maximum length, adjusting from 9.5" to 14.25" in circumference, with a width of 6.5"

Locks sold separately



Easy Access

Get your plaything into the perfect position for penetration! Spread those legs open & restrain those wrists! This highly adjustable bondage sling will create a darkly seductive atmosphere for you & your lover to enjoy. Adjust the back strap to bring their wrists up or down their back. Bring their knees up to their chest with the thigh strap to leave them completely vulnerable and exposed. The padded cuffs will keep them comfortable through the long hours of your pleasing, teasing, and tormenting! Each buckle locks, if you wish, to further incarcerate your submissive lover. Take control of the evening when you strap your lover into this durable and sexy sling! \$83.00



EA223



Back strap adjusts from 5" to 10" long; Wrist cuffs adjust 5" to 9.5". Thigh cuffs adjust from 13" to 23"; Chest strap adjusts up to 45" in circumference



NTW210

Neck to Wrist Restraint



Strap in your submissive! Doubling as a collar, the soft inner lining is gentle against their skin so you can cinch up the collar and wrist cuffs as tight as is comfortable. The large O-rings are made of strong, nickel free metal and metal and can have other bondage items attached to them. Use the buckle to adjust to the perfect fit. Hook your fingers around the O-rings and tug your lover towards you. Play with attaching the O-rings to different anchor points or place their hands far away from them. Their wrists will be cuffed and restrained, attached to the center strap attached to their collared neck. Keep the center strap short to keep their hands just out of reach of their genitals so they can not play with themselves, and enjoy teasing and toying with them. Limit their movement even more by bringing the strap around to the back and placing their restrained wrists behind their back. \$69.00



Collar strap 1.5" wide Collar adjusts 12.5" - 16.5"

Cuffs strap 2.5" wide Cuffs adjust 7.5" - 10"

Back strap adjusts 10.5" - 16.5" in length.

Levitate Suspension Bar



LSB204

Spread them wide and suspend your lover to your whims! The Levitate Suspension Bar is made to be hung from a solid ceiling anchor point so you can suspend your lover's arms or legs in the air, locking up their limbs and exposing their body to all kinds of fun. Tease them, please them, or punish them for their bad behavior! This suspension bar holds up to 350 pounds with confidence and spreads your partner a delicious 36"! Suspend their legs and support their body with a table or bench and enjoy their forbidden fruit. Built to stand up to the writhes and pulls of your sub! Or suspend their hands, blindfold their eyes and gag their mouth for a more traditional BDSM scene. Handles and wrist cuffs sold separately. Made from heavy duty steel. \$180.00



BED204

Under the Bed Restraint System

Unleash your deepest desires and dominate your lover! This quick-to-install bed bondage system transforms any bed into a dungeon of pleasure in minutes. Secure those limbs and take control, turning your partner's body into your personal playground. Perfect for home or on-the-go adventures, this versatile system fits any size mattress and can even be used around some doors. With six points of connection, you can attach cuffs, a collar, and more to create your ultimate fantasy scenario. The easy-on push clips promise unmatched strength and durability, ensuring your captive remains firmly in place no matter how wild your play becomes! \$84.00



Fantasy Web

Turn any bed into a playground with the Fantasy Web! Fits over any sized mattress, and includes neoprene wrist & ankle cuffs, which attach to the web with velcro strips. Web attaches to the bed with corner loops. \$87.00



WEB205

Bedroom Restraint System

Get ready for a wild ride! This erotic bed bondage system sets up easily turning your bedroom into the ultimate erotic playground, then tucks discreetly under the mattress or away in a drawer. Perfect for anyone, this comes complete with an adjustable bondage waist belt, adjustable under mattress restraint strap, ankle & wrist cuffs, 4 tethers, & satin love mask. The tethers, cuffs, and mattress strap interconnect using heavy duty metal-clips & high-strength O-rings.

The waist belt adjusts to fit up to 40", connecting with sturdy plastic clips, & the under-mattress restraint strap adjust to fit a king mattress. The belt, tethers, and straps are made from durable nylon and made to play hard! \$119.00



BED209



Everything You Need 20 pc Set ✕✕ |||||



The Everything You Need Bondage kit is the ultimate set for kinky play.



Along with the signature bondage bed spreader, this kit includes everything from traditional sex toys like anal beads, a butt plug and a vibrator to edgier items like nipple clips, a clitoris clip and a collar and leash. The set also includes items for restraint play and impact play with included bondage ropes, a paddle, feather tickler whip and a silicone flogger. Other types of sensation play is possible with nipple suckers, a feather



teaser and clothespins. The included nipple pasties are perfect for completing a kinky look, and when you're all done, simply toss it in the included storage bag! \$161.00

Euphoria



Unleash your desires with Euphoria Collar & Harness. This premium accessory combines style and comfort for an enchanting experience. The captivating multi-chain design and sturdy collar ensure a secure and comfortable fit. The harness features a convenient buckle closure for easy adjustment, allowing you to personalize the fit to your liking. Whether you're looking to spice up your passionate encounters, in the mood for adventurous play, or enjoying a night out, this functional and contemporary designed multi chain harness is the perfect choice to make a bold statement!

Regular size collar circumference expands to 15.25" and the underbust to 37.5".

Plus size collar circumference expands to 17.5" and the underbust to 50.75"



Regular \$79.00
EHA240



Plus \$84.00
EHA241



Hand Bracelet Harness

If the eyes are the mirror of the soul, our hands are the mirror of our personality! Put one finger in the strap and adjust the other end around your wrist and voilà, this hand harness is ideal for adding a bold touch to your outfits and highlights your fabulous manicure. PETA approved vegan. Wrist min 16 cm (6.3") - max 20 cm (7.87") \$59.00



HWR211

Female Full Body Harness

Look and feel sexy with this chest harness! It tightens around the neck as a collar and around the ribs and waist to accentuate your curves. The harness leaves the breasts bare to be seen and played with. You can also wear this over a shirt, lingerie or a dress if you want to style it with clothing. Made out of vegan-friendly, PU leather this faux leather looks and feels like the real thing and adds a classy yet kinky vibe to your outfit. It can be the perfect thing to flag your wild side or the only thing you wear in the bedroom! The harness has 3 metal o-rings that cuffs and any other bondage items can attach to. All metal is nickel-free.



L/XL: Chest adjusts 35.5" - 42.5" Waist 29.25" - 35.25" \$39.00 FBH236
2XL/3XL: Chest adjusts 41" - 46.5" Waist 33" - 40.75" \$42.00 FBH237

Male Full Body Harness

MBH231



Strap into this full body harness, designed to wrap seductively around your body and cock! Three adjustable straps ensure that this sexy bondage accessory fits most male bodies, with two cock rings that allow you to put your entire package through one, and just your cock through the other. Loom intimidatingly over your lover in this unique harness, or service your Master or Mistress. This device is perfect for those who fall into either Dom or Sub roles. \$51.00
Chest strap max 54" around Waist strap max 41"
Cock ring \varnothing 1.75" Cock and ball ring \varnothing 2"

Ellona



From the women's Leather collection, this style includes a full torso restraint Harness with adjustable buckled back straps and adjustable T-Back with metal rings and studs. \$49.00



MPA215

Halter Top Restraint

Halter harness top with D ring details. Removable cross restraint with clippable cuff and leg straps. Adjustable neck, underbust and leg straps. Metal details. OS. Wet Look/Elastic. *Pasties, G-string not included* \$65.00

Fits: Bust 34" - 40" Waist 26" - 32" Hip 36" - 42"
Cup B-E Dress 2-12



TOP233

Female Chest Harness



FCH237

Show off your gorgeous body and share your flair for kink with this chest harness! The top of the harness wraps around the neck to serve as a collar then comes down between the breasts to split off and wrap around to the back. The harness accentuates and complements the shape of each breast and has a halter top look from behind. Each long strap has many holes in it so you can adjust for a perfect size! With buckle closures, you

have a comfortable yet secure fit. The harness adjusts from the neck to the center of the body, around the neck, and along each side of the ribs. 2 large D-rings at the top and the bottom, 2 small D-rings on either side along the ribs can be used to attach leashes or other bondage accessories. Incredibly sexy with or without clothing and can be used to accessorize any kinky outfit! Surprise your partner with this sexy ensemble and pair it with some kinky games tonight! Or be daring and wear it over a dress or form fitting shirt and pants at an outing! \$76.00

Collar adjusts 12" - 15.5" Chest strap 10.5" - 14"
Under Bust strap 27.5" - 38.25"





MPA214

Aurelia

From the Women's Leather collection, this style includes an adjustable buckled single-strap torso harness with a snap collar, metal rings, and spikes. Soft nubuck leather with polyurethane coating, heavy metal rings, buckles, and studding. \$39.00

Harness w/ Bows



The use of your body is a gift; treat it like one with this bondage harness and wrap up your waist, thighs and wrists like a nice, little package - it even has bows included! Made out of pink, or black durable PU faux leather - vegan friendly and easy to spot clean or wipe clean after each use. The wrist cuffs close using nickel-free, silver colored metal buckles. Adjust the buckles on the thigh straps, waist strap and wrist cuffs for a custom and comfortable fit. Accentuate your curves and make your partner drool with lust and desire as you present yourself as the object of their admiration, a bound and submissive playmate ready to spice up the night!



M/L: Waist 26" - 42" Thighs 13" - 26" Wrist cuffs 5.75" - 10.25"

XL/2XL Waist 35" - 52" Thighs 21.5" - 37.5" Wrist cuffs 5.75" - 10.25"



Black M/L \$69.00
HBS223



Pink M/L \$69.00
HBS225



Black XL/2XL \$77.00
HBS224



Pink XL/2XL \$77.00
HBS226

Hoodie Harness

Leather harness with faux leather hood. Snap buttons for adjustable sizing via an o-ring. It's waterproof and easy to clean. \$129.00



HHN229



Masks & Hoods



CHL261

Chained Lace Mask

Add glamour and grit to your fantasy play with the Chained Lace Mask. Consider kicking your sensory play up a notch by warming up or cooling down the chains before use. The stylish

mask is flexible and comfortable to wear for extended periods and includes an easy tie satin closure. Pair with your favorite cuffs and lingerie to complete an enticing visual fantasy. Also excellent for role play and costume themed events. \$36.00

Masquerade Mask & Gag



Teach the meaning of submission in no time with this Masquerade Mask & Ball Gag. This ball gag has air holes for easier breathing, perfect for beginners! The elastic headband stretches to fit most sizes while the gag can be cleaned easily with toy cleaner and warm water. One size fits most. \$39.00



MAS259

Embrace the darkness Head Wrap



HWR211

This devious head harness uses a blindfold to effectively blind your lover while you play with them. They will not know what is coming as you

tickles, lick, spank, tease, & please! Wedge the ball gag in their mouth & every moan will be muffled through the gag, but they will not be able to beg for more as you take things at your own pace. Impress your lover with your abilities as they are left helpless. You will love how they look in this sexy & restrictive head harness! \$54.00





RAD251

Radiant

Explore glamorous and wickedly hot fantasies when you slip into the Radiance Full Hood Cover. The daring full face hood is made to thrill with the shimmering accents, breathable Mesh and daring Corset Lace Up Back. Surrender yourself to your lovers every whim once you slip on this sensory deprivation hood. The luxuriously soft Mask creates a sight restricting sensation that heightens sensitivity, elevates pleasure and intensifies arousal for everyone involved. Perfect for couples looking to experience sensory pleasure play and dive into thrilling, erotic adventures. One size fits most. \$26.00

Scandal

Wet your appetite for sensual deprivation - this soft & stretchy, comfortable veil of sensual lace is designed to relinquish your primary senses while heightening the less prevalent, allowing those to thrive. Cloaked in striking luxury, let your fantasies become erotic reality. Machine washable. One size fits most. \$31.00



SCN258

Seduction

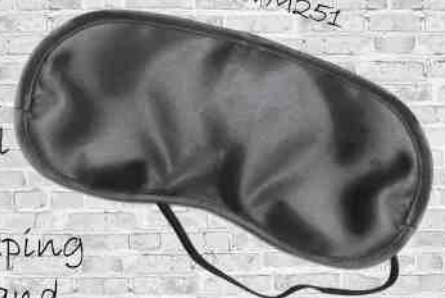
The sexy lace design is see through so you can wear it over your eyes and still be able to see around you. The gorgeous design accentuates your face and gives you a mysterious and seductive look! Keeps your mouth exposed for extra kinky fun. Machine washable. \$28.00



SCN258

Satin Love Mask

Create thrilling sexual excitement with this beautiful Satin Love Mask! Try it on your lover or use it as a nightshade for yourself. It softly covers the eyes, keeping you or your lover in a pleasurable state of darkness and anticipation that heightens sexual desire. The mask stays comfortably in place with an elastic fabric strap. Heightened sensory awareness can lead to extraordinary love sessions for both you and your partner! One size fits most. \$15.00



LVM251



SBS252

Submission

This comfortable Submission mask is designed to stretch completely over the head. The fabric allows just a hint of light in while impairing vision and awakening other senses. The shiny hood can be worn by him or her, and the thin lightweight fabric makes breathing and hearing a snap. Best of all, you still have access to your subject's mouth! \$29.00

Full Face Hood



Ensure total blackout with a soft sewn-in blindfold for true submission. A fun & kinky alternative to a traditional blindfold, the breathable fabric ensures comfort during long play sessions. Machine washable.

\$39.00

FFH254

3 Hole Hood

Keep your submissive incognito with this spandex 3 Hole Hood.

Though designed to stretch completely over the head, the thin lightweight fabric makes breathing and hearing easy. Best of all, your subject can still see and you still have access to their mouth! One size fits most.



HL251

\$37.00

Closed Hood

Enjoy the pleasures of deprivation with Fetish and Fantasy Closed Black Hood. Made so soft snug nylon this provocative hood covers the head completely. Keeping your partner guessing while heighten sensual play. One size fits most. \$21.00



CLH265



Dungeon Master

DMT269



Be the master in this executioner style hood that every slave wants to obey. Conceal your true identity and feel the touch of the soft leather on your skin. One size - Dungeon Master can be adjusted via corset like lace up enclosure on the back to desired size. \$69.00



Front Zipped Hood

ZIP252



Darken the senses with this Zip Front Bondage Hood! This hood denies the senses and blinds your sub with ease, making it simple to engage in kinky objectification play. Featuring two eye holes and a pair of breathing holes in the inner hood so your partner can see what's coming, only for you to zip up the front to take away their vision. Crafted to be breathable even with the outer hood zipped shut, while the lace-up back makes it easy to find the perfect fit for all head shapes and sizes. Deny your lover's sight without making them uncomfortable and transform them into an object for your pleasure! \$41.00



Pony Tail Hood

Fulfill your fetish fantasies with this soft leather hood. A 20" long blonde wig is attached to the top of the hood for an enchanting effect. Explore the desire to be bound & powerless or appear exceptionally powerful! Perfect for objectification play and matches other pieces of leather accessories so you can add this hood to your current dungeon attire. A lace up back allows this hood to fit most and feel secure. \$69.00



BTL257



Blinding Hood

Keep your subject silent and obedient with this Blinding Hood. This lightweight hood is made from high-quality polyester-spandex designed to fit most sizes and allows easy breathing. The eyes-and-mouth zippers gives you control over what your subject can see or taste. Zip the eyes and mouth shut, turn out the lights, and turn on the fun! One size fits most. \$47.00



Deprivation Hood



DEP252

Constrain your naughty pet and deprive your submissive of sight and sound with this pleather, locking, deprivation mask. The neck has a collar and D-ring for attaching a leash or other restraint. Three buckle straps constrain your slave, and each buckle prong has an eyelet hold for locking the hood onto your lover's head. A lace-up back ensures a secure fit. \$109.00



Sensations

Drip Candles

Light up your sex life tonight! Drip Candles are wonderful for setting the mood, but they are even better for pleasure and pain sex play. The warm drip teases & tantalizes in a way you have never quite felt before! \$16.00



Black
DC274



Red
DC2743



Multi-colored
DC271

Flame Drippers Set

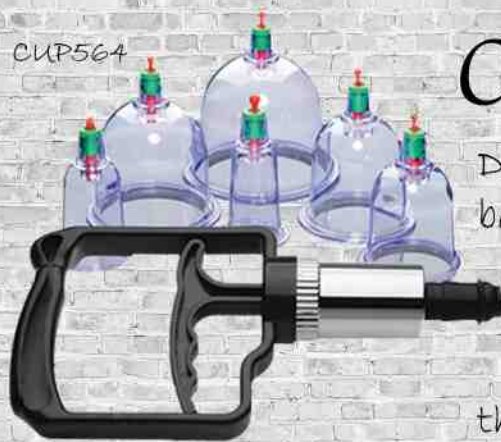
Make them writhe and wriggle as you experiment and explore with in high intensity candle sensation play and

drop hot beads of wax on their body! Made with a formula for easy melting and dripping, these are perfect for all skill levels. Drip and drizzle hot wax on your sub's body with ease: the paraffin wax formula has a low melting point of 122° F and is lightly scented to titillate the sense of smell as well as touch. Glass containers make it easy to judge the temperature of the wax before you pour. \$39.00



FDS275

CUP564



Cupping Set

Directly stimulate just about any spot on your body with an easy to use cupping set. With six cups in graduated sizes, you can experiment with powerful suction and increased sensitivity! Stemming from Chinese medicine, this unique method of relieving sore and aching muscles also makes for an erotic massage, intense BDSM play, or an exciting exploration of self pleasure. Acu-Points centered at the top of the cups provide additional stimulation against the skin, should you choose to pump that far. \$44.00

Orb Suppressor Weights

Up the ante when you add 8 ounces of heavy stainless steel to your nipple play, CBT, or whatever kinky activity has you captive. Get creative by clipping this beautiful weighted orb to a clamp, a set of chains, or other BDSM accessories to increase your discomfort and pleasure! The connection point at the bottom of the ball even allows you to attach more weight if you desire. Discover your limits while you experience excruciating ecstasy! 1.5" diameter \$49.00

****Only 1 orb comes with purchase. 2 shown for demonstrative purposes only.**



ORB795

Magnetic Orbs



Bring them to their knees in powerfully intense, pinched pleasure! Make a game of seeing how long they can keep these pinching set of extra strong magnets in place. As your plaything relaxes, the pressure will continue to give them what they've been craving! \$26.00

ORB794



Magnetic Power Pins



Surround your most sensitive parts with the magnetic pressure of the Power Pins! Apply to nipples, labia, scrotum, and more during solo or partner play to create an unforgettable aesthetic and a painful pinch of pleasure! The ultra powerful magnets will be drawn to each other on either side of your delicate flesh, acting as a pair of clamps



PIN794

that feel as good as they look. Nickel free \$49.00



Black Magic

These gloves are meticulously designed to offer an exceptional combination of strength and stretch, ensuring a snug and comfortable fit for your hands while providing protection. Crafted from high-quality latex, these gloves contour elegantly to your hands, creating a stylish and sleek appearance.

Whether you're heading to a club, a dungeon, or the bedroom, these gloves are the perfect accessory to complement your outfit and add an enticing touch to your ensemble. Black Magic gloves: where style seamlessly meets kink!



Both Large and XL gloves are 9 cm across the wrist, 10.5 cm at the widest part of the arm, and 34 cm long. Large gloves are 10 cm across the hand, and XL gloves are 11.5.



Large \$48.00
BMG260



XL \$51.00
BMG261



Pleasure Poker

This textured glove is so versatile that it may become a staple in all of your sexual experiences! So many ways to use finger, stroke, massage, or spank. Whether you are male or female, playing solo or with a partner, this glove will show you love! Each of the five fingers is uniquely shaped for a range of sensations during anal or vaginal insertion: smooth and tapered, bold ridges, penis shaped, raised nubs, or bulbed with subtle ribs. The palm has a zig zag tread that brings extra excitement to a hand job or masturbation. \$59.00



POK075

8.25" in length
1" at widest diameter, unstretched



VMP989

Vampire Gloves

Vampire Gloves are sporty black leather gloves made of soft, thin leather, with a snap closure at the wrist and one other special feature: the fingers have prickly little tacks sticking out of them (96 to be exact). The tacks are short, about 1/8" long, and will prick and scratch the skin like little thorns, but will not pierce the skin unless you squeeze or slap it very firmly. The gloves can also be used very lightly, and can stimulate the skin in dozens of distinct little points without actually hurting at all. Some people might find the sensation rather intense, perhaps in a ticklish way. \$64.00



Fingertips

Indulge in the world of sensory exploration with metal sensory Fingertips and explore a whole new side of tantalizing sensations! Whether you're a newbie or a seasoned player, these sleek and versatile finger tips are sure to elevate your sensory play to new heights! Place the five tips on one hand or split them between both hands to embark on a thrilling journey of teasing or torment with pressure play! \$21.00



TPS999



Double Pinwheel



Now you can always have sensation play at the tip of your finger! This unique Wartenberg Wheel allows you to wear two pinwheels on a 3-ring device. The smooth rolling motion upon your lover's skin will produce a prickly, painful pleasure that will give them goose bumps. Blindfold them to heighten the stimulation and surprise them with every touch! \$56.00



PIN254



Temperature Play Sensory Roller

Shock your senses with the Brand new Temperature Play Sensory Roller. This petite gunmetal roller is designed to awaken your most sensitive areas with the stimulating touch of temperature play. Simply immerse the quick-adapting roller in warm or cold water and glide it over your body, exploring the sensual contrast of hot and cold. Whether you're teasing yourself or a partner, this sleek roller adds an irresistible new dimension to exploring pleasure. It's time to turn up the heat—or cool things down -



in the most delightful way! Made with 100% Zinc Alloy \$28.00

E-STIM

E-Stim Gel

Use with all your e-stim toys, this gel enhances conductivity & sensation. Keeps your e-stim toys in tip-top condition! \$10.00



EST105

WARNING: Simple Pleasures LLC, its consultants, distributors, and/or manufacturers can not be held liable for any negative repercussions including injury and/or death due to the use of any product. Do not use if you are pregnant or have medical implants, heart problems or a pacemaker.

Goldfather Conductivity Enhancer

A high-quality conducting gel containing pure 23-carat gold, Goldfather is 100% safe to use with latex condoms, has an optimal pH balance, is water-soluble, and fat-free. Its skin-friendly properties have been dermatologically tested. Perfect for playing with electrosex toys, as its gold and electrolytes optimize the conductivity. \$36.00



GEL799

Shock Therapy Nipple Clamps

Give your sex life a charge! The spring loaded clamps plug into the power unit & provides thrilling eStim. Control the intensity & go from a sensuous tingle to a throbbing tap in seconds! \$84.00



SH0797





VLT293

Spark

Electrify the senses with the thrilling, shockingly good Spark - the flexible massager that can be bent in almost any position! 5 independent functions of eStim and 7 vibrating functions for electrifying pleasure! \$126.00

Flex Capacitor



FLX790

One of the most intense electrosex toys so far! Designed to create endless memorable sensations, this highly-conductive silicone rubber attachment radiates power all along its surface, but its real bite is reserved for the gap between its prongs, which will create a strong and sustained shock wherever contact is made with the body. Enjoy your own private "Great Scott!!" moments, even though it may feel like 1.21 gigawatts when it touches you! \$59.00

***Compatible with KinkLab Neon Wand. Although we have not tested this product with every other type of violet ray wand, we believe The Electro Whip will be compatible with most if not all of them, providing they have the same electrode socket size.

Hearts Desire eStim Vibe



HDE788

Time to reconsider the meaning of heart's desire, because our Heart's Desire will definitely deliver it every time! You can rely on that thanks to the design, which is shaped to fit your natural contours, but also the powerful and very quiet motor that will delight you with 8 vibration programs. And as if that weren't enough, you can also switch on any of the 5 electrostimulations plus 10 intensity levels and indulge yourself with soft tingling or intensely powerful pulsation. Additionally, Hearts Desire includes a program for promoting circulation. So go ahead, spoil yourself to your Hearts Desire! \$199.00





No 1

PMY768

Pubic Enemy

Each Pubic Enemy is a neat and transparent cock cage with eStim function: Keep his boisterous cock pent up under lock and key so that he can't get stiff until the mistress or master comes



No 2

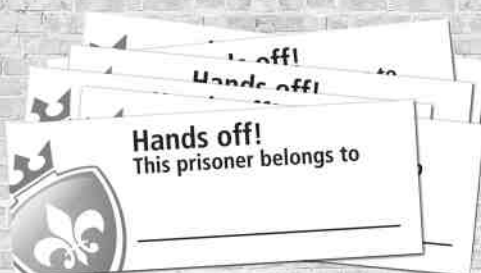
PMY769

with the key and lets him out. With the conducting surfaces, the prisoner can be treated with tingles, twitches or pulsations in precisely the intensity he deserves. Because his conductive surfaces can be taken out in no time at all, this chastity belt for wayward gentlemen is perfect even for those who haven't yet discovered eStim. And if a prisoner gets too cocky later, the conductivity can easily be restored.

- 🌸 Pubic Enemy No 1 has stimulating surfaces on the right and on the left.
- 🌸 Pubic Enemy No 2 also has a urethral sound and 3 conducting surfaces: left, right and under the penis shaft.

🌸 No 1: \$192.00

🌸 No 2: \$224.00



Electro Shank

This 12.5" prod style electro shock device is a devious way to keep your sub in line! This device delivers an intense shock that is sure to correct your lover's naughty behavior. Take hold of the comfortable 6.75" handle while you tease your sub with the sleek, sensual blade before delivering the shock! An easy to use button allows you to control the length and frequency of the shocks, while the handle and blade are safe to the touch. Requires 2 AA \$49.00



ESK789



Shock Therapy Kit



Give your sex life a charge with this incredible electro sex kit. Perfect for those new to eStim. The easy to read LCD screen on the digital power control unit clearly displays the function and intensity level, and with 3 preprogrammed pulsation patterns to choose from, this attractive control unit sends electrical impulses to whichever body part you place the pad on. Choose from a sensuous tingle to a throbbing tap, all with the push of a button, and pick one of the 5 body zones to stimulate. With over 100 stimulation combinations to choose from, the possibilities are endless! Great for muscle and/or neural stimulation, or an all over relaxing electro massage! \$79.00



STK782

Modulation frequency: 0.01 Hz - 1 Hz;
Pulse repetition frequency: < 70 Hz;
Output pulse amplitude: 70 - 120 Hz.

Power Wand Kit

The Wand Kit is a fun device that creates an electrical discharge across the surface of the skin. The electricity produces sensations over a broad range, from a pleasurable warm tingling, to a more intense, focused sensation that some find painful. The level of sensation created by the wand can be controlled both by a multi-level intensity dial on the wand itself, and also by which electrode you choose to use. The Neon Wand kit comes with 4 different glass attachments (Electrode Comb, Mushroom Tube, 90° Probe, and Tongue Tube) that is thrilling to experiment with. The kit color refers to the color of the light glowing in the glass electrodes, and you can choose from purple or red. Can be used for 25 - 30 minute sessions. \$164.00



PWD791



Power Tripper



The Power Tripper takes erotic electro stimulation to a whole new level, allowing you to generate sensually stimulating sparks whenever - and wherever - your skin comes in contact with another person's. When it's plugged into the Wand and placed against your bare skin, your partner feels a delicious electric tingle flowing from your tongue or fingertips every time you kiss; lick; or touch them - just imagine the tormenting but sensual possibilities...such as mind-blowing oral electro sex! Depending on your wand's power setting, sensations produced range from gently stimulating to a potent bite. This intimate method of using violet ray wands is called the Human Electrode or Indirect technique (electrical stimulation with these toys usually occurs directly), via the conductive, glowing glass attachments. \$68.00



Electro Whip













This conductive silicone Neon Wand accessory combines electrosex and a classic, 10-tail, 12" mini flogger to create an electrifying erotic experience for you and your partner! The Wand allows each black silicone tail to be conductive, delivering a surprising shock along with the sting of the whip. The solid-state technology allows it to be wielded in any position without unwanted changes in intensity as you deliver your electric strokes. In comparison with typical glass electrode accessories, the Electro Whip greatly increase the intensity of sensations created by the Neon Wand. At milder settings, however, its bite is reduced, making it an appealing toy for players of all experience levels. Be sure to exercise caution: At higher settings, this whip really packs a wallop! Each tail is 1/4" wide. Fits all models of the Neon Wand. \$59.00

Agent Noir Kit



If you've ever fantasized about being a secret agent, sneaking through Checkpoint Charlie by the skin of your teeth, you're going to love this elite Agent Noir device set! Electrifying intrigue and mysterious midnight rendezvous with the aid of the new all black Wand, plus a fun set of 8 accessories to be used with the included Power Tripper, all nestled securely in a padded, silver, combination lock attache case! Agent Noir contains:

-  **Neon Wand** - a solid-state device with no moving parts, it can move and change angles without distracting interruptions or unexpected variations in the output
-  **Power Tripper** - An incredible accessory allowing you to generate sensual sparks whenever and wherever your skin comes in contact with your partner's
-  **Rolling Drum** - make sparks fly by rolling this over the body and create an exciting and intense prickling sensation
-  **Electro Whip** - a probe turning the body into a lightning rod while the multi-chain flogger sends elaborate sensations through the tiny chain links
-  **Bulb** - attach the Wand to create an effect like a plasma globe. More visually striking than seriously shocking; great for intimacy or interrogation!
-  **Comb** - the teeth of the comb evenly disperses a soft flow of electricity to caress and tease while the tip can be used for a strong and concentrated spark
-  **Pinwheel** - this metal wheel of prickly little pins can be rolled over skin, generating a somewhat intense shock
-  **Tongue** - the bulb of this electrode tapers to a snub nosed end, giving it the appearance of a tongue, or a small, electrified snake's head
-  **Probe** - drag this glass rod gently across the skin and enjoy a sensation that ranges from soft to intense
-  **Mushroom** - a rounded flat-head emits a gentle, tickling, wide arc of beautiful blue light to guide your explorations across sensitive parts, making them squirm with delight

\$454.00

NOR781



MyStim Tension Lover

TDN789

With the Tension Lover power unit, you can discover endless stimulation, ranging from a soft prickle, a rhythmic pulsation or a sensuous pushing. With the MyStim Tension Lover you can have it all, from soft to hard! 2 individually adjustable channels provides 7 different programs for the satisfaction of individual wants, from affectionate to intensive. Timer can be set for 10, 20, 30, 40, 50 or 60 minutes. intensity, pulse width, and pulse rate are arbitrary for the user; the device can be preset and the switches locked. Tension Lover also has an extra large display for a perfect readability in every situation! \$209.00

SPANKINGS



Bamboo Cane



36" Bamboo Cane canes are made with real bamboo. Sheppard's curved handle with a metal tip. Made in the USA. \$12.00

BC282

HurraCane

HurraCane can be used as a cane or the handle makes a textured dildo. The impact of the standard rattan cane can be very intense; HurraCane takes it up a couple of notches! Ø3.75" and 15" in length, the HurraCane is flexible, yet very strong and, unlike rattan, there is not a breaking point with Tantus Silicone. Tantus Silicone transmits energy very effectively and takes very little in terms of strike force. You may also use the HurraCane in a whip-like fashion. \$64.00



HCN282

Rubber Paddle

Your lover will know who is in charge! This bendable rubber paddle is soft enough for beginners to enjoy but stiff enough to still provide a firm whack. It hurts so good! \$26.00



PAD284



Acrylic Spanker



ACR280

Acrylic Spanker features an impact surface with 13 die-cut holes that reduce air resistance for a faster swing and harder hits. The holes also make a unique impression on the skin, leaving behind a delicious polka dot pattern. This pleasure tool's smooth, vinyl handle is comfortable and easy to grip even through the wildest spanking sessions. It's speed-enhanced 4 mm acrylic end packs an exceptionally satisfying sting. \$39.00

Wicked Skulls Paddle

Take your spanking up a notch with this Skull enhanced Paddle. The skull designs on the paddle are not only attractive, but also give a harsher sting. The high-quality Bonded Leather paddle offers sublime blows with the lightly rough texture for a sumptuous combination of pleasure and pain. \$25.00



WCK290

Impression Sturdy Paddles



These tanned slappers make great sounds on your partner's backside, and these paddles will certainly help you leave your mark. These paddles are 12" long, are leather 2 flap slappers with your choice of LOVE, SLUT, or a heart design, cut out to leave an impression. For those interested in the lighter side of SGM play, this leather paddle is the perfect tool for adventuresome couples. In fact, this leather slapper is perfect for any level player! \$41.00 each



Hearts
ISP289



Love
ISP287



Slut
ISP288

Impressions Wood

Impressions Wooden Paddles are high quality Natural Pine, durable and lightweight, allowing you to use as long as you want! Airflow holes cut out on air resistance allowing maximum velocity.

Please note that wood grains vary, making each item truly unique: no two will be the same! \$23.00 each

2 Hearts paddle is 14.17" long

4 hearts paddle is 15"



IWP290

IWP292

46



Impression Wood Zelkova

Impressions Wood Zelkova 12" compact paddles offer a harder hit that leaves the bottom stinging, enhancing their pleasure.

Do not let the size fool! This paddle can be thuddy or stingy, depending on you! Lightweight enough to play with for as long as you want, these paddles are for beginners and experienced players! You can leave an impression on your partner, but whether or not it does is all up to you! Smooth wood feels good in your hand as you are giving spankings to your lover. Cutout allows air to flow through the paddle to create a smooth swing. \$31.00 each



Spank me
IWPZ292



Fuck Me
IWPZ290



Slut
IWPZ291



Rouge Riding Crops



Experience elegance and control with Leather Riding Crops. Made from premium leather, it offers a solid grip for great control. The hand-braided shaft adds durability and style. As luxury bondage accessories, these are crated for both functionality and beauty. Want something a little more.....devilish? Also available is the Black or Red Devil's Riding Crop, also made of real leather and with a long shaft that allows for a gentle sting or a satisfying slap. \$29.00 each

Regular crops are 25.8"-26" x 2"

The Devils are 61 cm. or about 24"



Purple
RRC275



Blue
RRC272



Red
RRC276



Black
RRC271



Burgundy
RRC273



Devil Black
RRC277



Devil Red
RRC278



Pink
RRC274



Wicked Whip

If you like a good flogging, this beautifully crafted whip with skull design is perfect for your sensory play and kinky bedroom fun! Made from high-quality, black bonded leather, Wicked is beautifully finished with small skulls on each tail. The mix of pleasure and pain will drive them to the edge of bliss! \$21.00



WCK292



Bull Whip

Explore your wild side with the high-quality, hand-stitched Bull Whip. This supremely naughty, precise, and incredibly fierce toy for seasoned SGM enthusiasts whip's unmistakable crack alone can make an ordinary night extraordinary! \$43.00

BULL282

Spiked Chain Whip

Flexible iron chains can be used for delicate tickles or hard spanks. Handle length 7.25" Whip length 16" \$59.00



SPK288

Flogger w/ Beaded Handle

Cruelty-free and vegan-friendly, this beautiful beaded flogger is for those interested in the lighter side of SGM play. This beaded flogger contains no animal products. \$16.00



BD284

Braided Flogger

Intensify your impact play with the Braided Flogger! Each of this cat-o'-nine-tails faux leather flogger's thick braided tails ends in a tip reminiscent of riding crops, landing nine perfectly stinging snaps anywhere on your willing partner's flesh. Heavier falls mean a fiercer bite than standard soft floggers, making the Braided Flogger the perfect pleasure tool to take punishment play to the next level! \$35.00



BRA288



ROG288



Black & Red



Black & Pink

Suede flogger with a leather handle.
Practical and stylish!

\$104.00 each



ROG286



Deerskin Flogger

Deerskin floggers are the softest floggers we offer, both in terms of intensity and the feel of the tails. They make excellent breast and genital whips and are wonderful for sensation play. 10" handle, Tails are 18" long, 6" braided leather round wrist loop, Lashes are 1/2" wide. \$396.00



DSF269

Creative Play

Spread Her



Turn up the intensity of your kinkiest scenes with these unique straps, designed to wrap around your thighs, clamp onto your labia and spread them open! Perfect for humiliation play,

gynecological role play, or whatever wicked fantasies you want to bring to life, this unique set keeps your partner's genitals ultra sensitive and helplessly exposed like never before. The straps are lined on the interior with a velvety softness and have buckles to adjust the fit around your thighs. The rubber tipped clamps have thumb screws that adjust their pressure. Get creative with your BDSM scenarios! \$36.00



SPD202

Speculum



Made from high quality stainless steel, this gynecological instrument can be used for either vaginal or anal spreading. Take a look deep inside as medical play will never be the same once you own a pair of these. This contains one speculum. Not retail packaging, usually a plain box, wrapped in a poly bag. \$69.00

Spread 'em Poker Clamp

Spread her lips wide with this Spread Em Poker Labia Clamp! The clamps are made of durable, nickel-free, stainless steel. Two compression screws twist to close the clamps against the labia and cause the vulva to be on display. Latex or nitrile gloves add to the scene as you gently rub her clitoris and stroke her labia. The spikes and screws help keep her from closing her legs so her vulva is on full display for you! After you've played a bit, remove the clamps by loosening the screws, then start to use the allen wrench for round two and turn the pinch screws so they poke into the space between the clamps; she will feel the poking, pinching, biting pressure from the pinch screws and the sensations will be enhanced tenfold! These add an extra bite of pressure adds to the sadistic fun! Spread those lips wide and let the Doctor examine you! This item is perfect for kinky, medical play! \$114.00



Reduce risk of tissue damage; do not twist and turn while the screws are already pinching the skin.

ANIMAL & PET PLAY

Mystic



MYT148

Fun, cute, & colorful, Mystic brings fantasy to life for hot to trot fillies & horny studs looking to get buck wild in the bedroom! Mystic features a tapered butt plug with an alluring, long and flowing ponytail, guaranteed to inspire role play, be it for kinky couples play with a partner or to ride alone into the sunset! \$43.00

BT141



Bunny Tail

This adorable white tail will turn you into a sensual and playful bunny! Weighted for comfort, the metal plug is smooth, tapered, & petite so that insertion is easy and enjoyable, even for beginners. Your partner will love how cute you look! More than that, they will love knowing your ass is plugged. Tease them until they are overcome with desire! \$36.00



Convertible



CVT141

Turn your sub into your pet with these interchangeable tails so you never get bored. Switch between a pink rabbit tail, a grey fox tail and a white fox tail. Match their other accessories and outfits to make into a costume. The premium silicone plug has a tapered tip that makes insertion easy and comfortable for all skill levels. Plus, it has a snap on end that any compatible snap on tail can attach to so swapping tails is easy and mess free! \$64.00

Tail & Ears sets

Is your sub a little too high energy? Let them release their inner animal energy before you trap and ravish them. Or put them on a leash and take them for a walk. Or you can put these irresistible tails and ears on, while restraining them from touching you until you're ready. \$75.00 each



Grey Wolf

TLE157



White Fox

TLE156





Rainbow Pony

Enjoy hot equine action in a fun, flirty color with this smooth, full pony tail! Braid it, brush it, swish it, show it off! The tail is a full 20" of Synthetic Fiber, topped with a phthalate free and silky smooth silicone plug. The classic spade shape inserts easily, with a flared base to keep it firmly in place. \$53.00



PNT143

Bad Kitty



Get ready to be a bad kitty for your Master or Mistress with this long, furry, flexible cat tail topped by a silicone plug. Two handy loops at the base at the base lets you add bullet vibrators.

The tail itself is bendable, and nearly 2 feet long! Covered entirely in super soft synthetic faux fur. Be a naughty kitty cat with this fun and flirty visual treat! 28" total length; tail itself is 24" & the plug is 4" \$63.00



BK149

For more animal tails, see our Regular catalog & our online exclusives!



Miss Kitka

Be the enticing pussy tonight with the Miss Kitka half hood and lace mask! The wet look will intrigue and the lace eyes and ears will seduce. \$41.00

CAT260

Naughty Kitten

The ancient Egyptians worshiped cats, but today we keep them as pets. Slip into this slinky, sexy leather mask & decide how you want to be treated! Perky ears create a playful atmosphere, while rhinestone accented rivets add a touch of elegance. Adjust the band around the back

KTY256



of your head from 20 - 25.5" for the perfect size for secure wear through feistiect of encounters! Genuine leather makes for a long-lasting accessory. Now the only question is: Are you a good kitty or a bad kitty? \$104.00



PP144

Pup Mask & Gag



Turn your partner into your kinky little pet when you make them wear this puppy muzzle! Complete with dog-like ears, this hood is perfect for puppy play enthusiasts. Leaving the eyes uncovered so that your pup sees everything you do, this mask also serves as a gag for your play thing. The breathable ball gag within the muzzle is perfect



shutting up your whining or barking dog but is also removable so that you can hear every pant and howl. Designed for a comfortable, yet restrictive fit, each of the three straps are adjustable, fitting all dogs. \$124.00

Over the head vertical strap adjusts from 15" - 22.5"

Horizontal strap adjusts from 18" - 23"

Behind the head strap adjusts from 15" - 23"

Ball gag is Ø1.75"



Spike (Puppy Hood)



PSP256



Transform into your K9 alter ego with the perfect puppy hood! Made of super soft and stretchy neoprene, this mask looks, feels, and barks premium! It conforms attractively around your head, head, leaving just your eyes, mouth, and nose exposed. Or send your puppy to obedience school; your little pet will learn to obey commands in no time! The muzzle snaps on and off easily for two different ways to wear, featuring the the same quilted pattern as the brow and inner ears. The bendable ears can be posed to simulate several different breeds. Remove the detachable muzzle for when you want to give your puppy a treat or watch them pant in anticipation. Whether you are a bad dog or a well-trained pet, this puppy play hood will help you accept your role at your owners feet. \$112.00



Muzzled



Lace your partner into this hood and they will have trouble hearing through the ear padding on the sides. Snap the blindfold accessory into place and stuff their mouth with the padded mouth gag. Turn your partner into your pet by snapping on the



MUZ251

dog ears and zipper-mouthed muzzle. You can even keep the gag in. An adjustable collar with a locking buckle allows you to keep them confined. The D-ring collar is perfect for leash play or attaching other BDSM accessories. \$134.00

One size fits most. Gag is 2.5" insertable; Ø2
Collar adjusts 14" - 19"
Lock not included.



Musk Muzzle



If your plaything can not get enough of the powerful smell of your sweaty groin, give them what they want by locking them into

this unique and humiliating muzzle! The comfortable silicone lined athletic cup unsnaps from the straps so that you can

wear it during the game, then force your sub to inhale your scent after. The straps adjust to fit most and have a locking buckle so that you can lock them up with your ripe odors trapped inside! Your nasty plaything better be careful what they wish for! \$107.00

Athletic cup is 6.5" long, 4.5" wide Straps adjust up to 26"

**Lock not included



CUP255





Bone Gag

Give your good little doggie a bone for some extra bite and to boost your erotic adventures! Made from smooth, phthalate-free, high-grade silicone, this beautifully crafted gag is fully adjustable with 9 holes and comes with two straps plus a sturdy clasp. \$26.00



BNG207

Piggy



Experience the untamed realm of your deepest desires with the Piggy Latex Hood! This extraordinary accessory is designed to ignite your imagination and satisfy your adventurous sexual drive, making it perfect for role-playing, sensory deprivation, and bondage play. Crafted from premium, stretchy latex, this hood effortlessly embraces your contours, ensuring a comfortable and snug fit. Its unique piggy design, complete with a snout, invites you to indulge in wild and captivating fantasies that will leave you craving for more.

Piggy is thoughtfully designed with strategic eye openings, allowing you to navigate securely without compromising the excitement. Additionally, its breathable construction ensures that your comfort remains intact throughout your playtime adventures. \$117.00



PGH261





FCH205



The Demon

Indulge your devious dungeon demon side with this horned bondage hood! The Demon accents and shows off your eyes and calls attention to your wicked grin.

Change up your appearance while still enjoy seeing, speaking, and

tasting whatever you desire! The

inner lining is soft and makes wearing this hood pleasant for long periods of time.

The Demon is adjustable via a corset style closure in the back. Combine with leathers,

bondage straps, harnesses, or other outfits to really bring it all

together and give your partner a little mystery and role play!

Whether as a costume for a special event or as part of your kinky persona, Demon Hood is perfect for giving off an aura

of mischief and power. And if you break a sweat, the Demon

can be easily washed - throw The Demon in the washer on a cool cycle and hang to dry! Made of Polyurethane (PU) faux leather.

One size fits most. \$52.00



Devil Hood

Dangerously sexy half hood with

horns. Be naughty anytime, and The

Devil faux leather hood is a fun way to

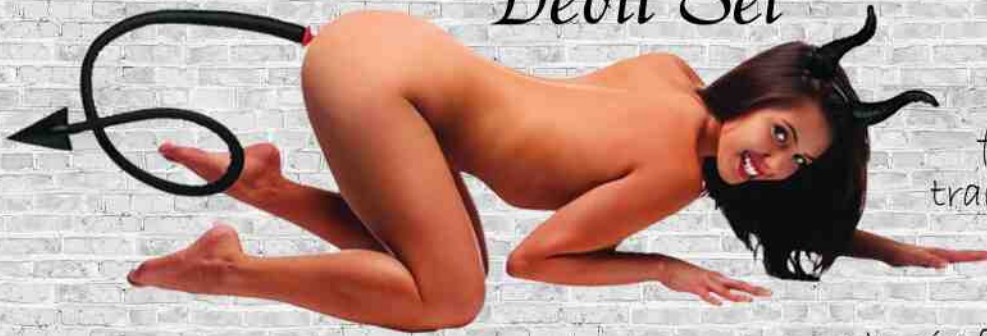
play! One size fits most. \$38.00

DVL251



DST251

Devil Set



Act out your devilish fantasies and transform into the hottest demon ever with this set of demonic toys!

The sinfully sexy long demon

tail plug and kinky devil horn head band are built for role play: combine with sexy lingerie, colored contacts and your choice of restraints for a hell of a good time. The bendy Devil Tail ends in a kinky arrowhead tip and features a deliciously supple red silicone plug!

Tapered with a narrow neck for comfortable insertion and easy on your hole during extended wear. Perfect for walking around the house and tempting your human subject into nefarious activities. The meaty tail itself is plush and flexible, with a decent amount of weight to pull down against your ass hole to stimulate you with every movement. Have your



human play thing pull on your tail when things get hot and heavy for even more backdoor stimulation!

The included Devil Horns slip on most head sizes, completing your demonic look and giving you an evil silhouette for your lover to enjoy. \$67.00



ASS PLAY

Clean Stream



\$23.00

ENM415

Colt Anal Douche



\$31.00



CAD416



BP155

Nice n' Easy Plug

Perfect for just starting out or needing that little extra tease in your play!
\$18.00

Pegging Kit



Show your man who the boss by dominating him, top to bottom! Rob him of his sight but leave that useful mouth accessible when you slip a stretchy black hood over his head. Meanwhile, suit up with a harness that adjusts securely around your booty. Use the inside pocket for a small bullet vibrator to ensure that Mistress is always pleased! \$69.00



PEG224

Harness adjusts up to 60"
O-Rings are 1.75 - 2" diameter
Dildo is 6" long, 5.25" insertable, 1.5" wide

Plug-ilicious

Enjoy sensual ecstasy with the Plug-ilicious! This waterproof anal vibe has a conical shape & flattened tip, which pleasantly fills your backside, stimulating you with intense vibrations which can be controlled via the control panel and/or the Satisfyer Connect App. Besides creating your own patterns, you can also exchange information with other users or enjoy video and audio calls with your partner via the app. \$91.00



PLG160

Spades



SD164

This extra large set of anal beads are spade shaped for added sensation. Flexible yet firm, the slick material inserts easily. The O-ring handle makes for easy and quick removal, as each flared bead passes out of you, you will feel an incredible jolt of sensation. Tapered for easy insertion, these super sized beads will maximize your anal experience. \$56.00

9" insertable length, $\phi 1.75"$



FT165

The Fist

The 14" Fist is a replica of a man's arm with a tapered clenched fist and full-length forearm. The flexible Fist is suitable for both anal and vaginal play. Assorted classics. Absolutely exhilarating is the only way to describe an experience of this magnitude. Firm and big but the material is pliable for a comfortable ride. 14" long with a width varying from 3 - 3.5" and 9" in circumference. \$111.00

*****PLEASE BE AWARE: ***** This product is very large, do not order unless you understand the size. *******

The Claw

If you are ravenous for a huge, ass-stretching insertion, the Claw will open you up like nothing else! Pinch all four wedges together for a more manageable penetration. Once past your sphincter, the Claw will expand, opening your insides up! A hole at the base of the plug allows your partner to peer into your anal depths, or even fill you up with a dildo, an enema, or whatever your filthy minds come up with! The phthalate-free material is firm, yet flexible and will press against all the right spots inside you. Enjoy a distinct sensation! \$69.00



CLW280

4.5" total length, 3.5" insertable Center hole measures $\phi 1.5"$
Closed, $\phi 2.25"$ at the widest point; opened is $\phi 4.25"$

Double Penetration



Enjoy feeling completely penetrated as you peg your partner! This harness has three detachable silicone dildos that can penetrate the wearer's ass and/or vagina while also having one at the front for pegging their partner. Swap out dildo sizes and rearrange the configuration to best you! The PU leather harness has a soft inner lining and adjusts at the right and left points of the hips as well as at the front near the crotch and the back between the buttocks. \$131.00



DPT111



Crotch strap adjusts from 20" - 23" in length
waist adjusts from 25" - 41"





Ass Holster

Lock your submissive, slave, or puppy up in Ass Holster -

it keeps their cock and balls exposed while



HOS112

their ass is plugged! This attractive, leather like harness adjusts around the waist and ass for a customized fit, tightening against their asshole to keep your favorite plug or dildo pushed in deep. Two rear pads accommodate a standard plug, with velcro straps that lock in the base, or a tail plug, with a hole that allows the accessory to flow out for exposure. The cock and ball opening keeps their package in reach for you to play with. Locking buckles keeps your slave helplessly trapped! \$123.00

Harness fits waists 36" - 42" Cock and ball \varnothing 2.25" Tail plug \varnothing 1.5"



Rogue Anal Hook

Better than your average anal hook,

the Rogue Hook has three stimulating

balls stacked on top of each other that will

massage the walls of your partner's ass! A ring at the top

of the hook allows you to add rope or chains to complete

your BDSM scene, and every motion will send sensation

into your playthings booty. The smooth, seamless

material is comfortable to insert and is also non-porous

for a thorough sanitize after use. \$126.00



RH198

See our regular catalog for more anal fun!

CAGES, WEIGHTS, & STRETCHERS

Screaming O

Make sure you're ready to be up all night with this non-irritating spray that temporarily prolongs the time until ejaculation using a concentrated 13% lidocaine formula - the highest allowed without a prescription. Numbing sensation works in minutes and lasts for hours! Improve stamina, increase endurance, and prolong pleasure without a prescription! \$20.00



SCR921



Cock Tease



Keep them securely and excitingly entrapped with the ultimate Cock Tease cage! This cylinder-shaped chastity device tantalizingly exposes just the tip of their shaft and



DTA005

adds a separate kinky testicle ring. Denying sensations to the ultimate degree can heighten arousal to an explosive level, so lock the device into place with the included padlock and reach new heights of pleasure! \$79.00

Gates of Hell



A wicked and attractively rendered classic Gates of Hell is made of five nickel nickel-plated steel rings of varying sizes, permanently connected with a soft yet firm oil tan leather strap.

The five gates of hell are slid one by one onto the male wearer, offering constriction and erection support as his penis becomes rigid and providing a pleasing visual effect. \$29.00

GH229

ManCage 4.5" Adjustable



MCA228

Feel the ultimate power as the key holder of your partner's most intimate parts, then experience the most liberating feelings when opening the lock! This ManCage is an absolute must for people who love kinky BDSM! Prevent an erection by caging your penis, which builds up to an extreme release when it is removed. The medical grade silicone makes it safe to wear all day long, and is supple under clothing. It can be adjusted at several points and is available in two sizes. There are five different rings and different spacers to measure it perfectly. It has functional openings for ventilation and toileting and is easy to clean. This Mancage comes with several plastic clasps, to be used if extra discretion is required, like security checks. A sturdy metal lock is also included. \$89.00



60 MM

55 MM

50 MM

45 MM





MCA227

ManCage 5.5" Adjustable



Take your BDSM play to the next level! Though the Mancage makes it impossible to get an erection after liberation your erection will be super intense, just like the freeing orgasm to follow! Mancages consists of three parts which fit perfectly together: two guidance pins connect the top parts and the oval taper pin connects the rings with the cage. A variety of restricting yet comfortable rings in different sizes and distance pieces will allow you to create the perfect size! The included tie wrap locks ensure that they will not trigger the alarm of metal detectors at parties, festivals or even airports! Cages made from high grade polycarbonate and have a variety of vents and a urination opening. \$89.00



Cage length approx 5.5" x 1.65" Inner cage ϕ 1.77"

Adjustable rings inside approx ϕ 1.37", ϕ 1.77", ϕ 1.96", ϕ 2.16" and ϕ 2.36"



Prisoner Cage



PCC228

Put his boner behind bars and punish his misbehaved member with the Prisoner steel cage! Made from highly-polished steel and secured with lock and key, this shiny chastity cage will keep your sub's cock behind bars until you decide to set it free. Dare your subject to get a hard-on and watch as they struggle inside the prison-like confines of the

cage. No matter how aroused he gets, the curved steel shape prevents your sub from getting erect, but the open design still allows them the freedom to piss when they need to. You hold the key to pleasure, so make sure they do as you say before you grant them their freedom. The designer alligator-style waist strap easily adjusts to fit most sizes. Attach a leash to the waist strap and explore all your master-and-slave role-playing fuck fantasies! \$84.00



His Chasity



HCH222

Lock up your subject's most misbehaved member with His Chasity belt. Made from high-quality metal and closed with a secure lock, this cage will keep your subject's cock behind bars until you decide when it is a good time to release him and set him free. The waist strap attached to the cage is adjustable to fit most sizes. Attach a leash onto the waist strap and explore all your master and slave bondage fantasies! \$106.00



Captus

This erection inhibiting device is made of durable stainless steel and features a shortened cage with a locking base piece. Simply place him in the cage and fasten the base ring using the simple pin mechanism. The hinged base ring has a rubber sleeve at the joint to prevent pinching. Then just place the pin through the top of the cage and secure him with the included lock and 2 release keys. You decide when he is free. \$149.00
Cage is 4" long inner ϕ 1.4" base ring (inner) ϕ 1.75"



CAP202

Solitary Confinement

Lock up his dick in solitary confinement! His cock will not be getting any attention while it is trapped in this intensely constricting chastity device. Yank his cock



CNF259

and balls through one of the two base rings, sized differently to fit your submissive the way you like it. Lock the shaft position of the cage in place, squeezing his flaccid cock for the ultimate incarceration. Now he is completely at your mercy, unable to find release unless you allow it. This sturdy stainless steel cage can be worn for as long as you desire, with a faucet feature that allows him to urinate. His cock belongs to you and you hold the key! \$199.00



2.5" long, 1.5" insertable. Base rings are 1.75" and 2" wide



Ring Master



Discover new levels of pleasure with this customizable ball stretching kit! Perfect for both beginners and those who want to push their limits, this set of 5 stretchy rings allows you to add tension one ring at a time. Find the perfect tugging sensation as your scrotum is pulled downward more and more with each ring you add. For even more excitement, use one as a cock ring to keep your member hard & pulsing with sensitivity while your balls are stretched. Compatible with both silicone based and water based lubricants. \$34.00
Each ring is Ø1" unstretched.



RMS929

Route 69 Stretcher

Not too heavy and not too light - if you're stretcher-curious, this is the perfect toy to start with! The super stretchy, 2" Route 69 fits scrotums of all shapes and sizes and is super easy to put on: just stretch it between your fingers with each hand and gently release it between the base of your cock and your balls. You won't believe how amazing this incredible accessory feels! Safe with all lubes. Not compatible with latex condoms. \$38.00



PFS929

Squeeze Me



SQZ256

Made from the signature, best selling super soft, blubbery FlexTPR, Squeeze Me is super stretchy

and soft, but still firm enough to cling to your junk like a second skin. Each end of Squeeze Me is lined with an inner ring to keep your sack in place, continuously pushing your heavy nuts down and away from your body for a sweet stretch that is sure to make you shoot like a porn star when you're finally allowed. The curved design of the inner chamber grips your meat tight without strangling the life out of the boys - that's your or your partner's job. Wear it as a reminder of things to come as you follow your partner's instructions while your own gratification is delayed. You'll have a constant reminder, feeling your sack dangling down and swinging between his thighs while you do your work or chores, or if you're simply kicking back on the couch. \$42.00





BBS296

Ball Sling & Cock Ring

The innovative Ball Sling and Cock Ring set is designed to help enhance an erection and optimize staying power. An ingenious triple o-ring that wraps around your length, balls, and base for maximum support and hardness; and a in-sling-ring-in that's a ball stretcher and o-ring all in one! Both are made with super-flex TPR, soft to the skin, and ultra-body-safe. \$19.00

Cock Strap & Ball Stretcher



CSB934

Do more than just maintain a rock hard erection - make it the best erection you have ever felt! The snap ring around your cock and balls restricts blood flow, making your dick bulge with sensitivity, resulting in a stronger, harder, veins erection that will last until you are ready to blow your load! The ball stretcher and separator will tug down on your balls while you do your thing, heightening your ecstasy when your balls try to retract during stimulation but are unable to! All straps adjust for a customized experience. Attach weights or other accessories via steel D-ring One size fits most. Leash/Chain sold separately. \$27.00



Ball stretcher adjusts $\varnothing 1.4'' - \varnothing 1.75''$ Cock strap $\varnothing 2.25''$



WBS939

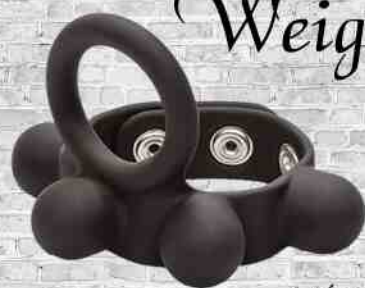
Weighted Ball Stretcher

Get the support you need for the ultimate thrilling orgasm! This ring is designed to get you and keep you there! Harness the full potential of your manhood while experiencing extreme pleasure and enjoying the ultimate in gratification. Designed with smooth and seamless silicone for comfortable constriction, you will be begging for more. Three snaps inlaid in ultra stretchy, powder soft silicone provide fully customized support. Four heavy duty weights embedded into the Silicone and wrapped around the ring, evenly distributing the 2 oz of total stretching power. As a solid one piece design, there are no bulky attachments to get in the way. Stretch your parts while feeling the perfect amount of swing.



The super stretchy erection ring holds you firmly in place and at commanding attention! \$19.00

Weighted Ball Stretcher & C-Ring



RBS937

Get the support you need for the ultimate thrilling orgasm! This ring is designed to get you hard and keep you there! Harness the full potential of your manhood while experiencing extreme pleasure and enjoying the ultimate in gratification. Designed with smooth and seamless silicone for comfortable constriction leaving you begging for more, and combined with the durable erection enhancer, this system offers full support for stamina and performance. Three snaps inlaid in ultra stretchy, powder soft silicone provide fully customized support. Four heavy duty weights embedded into the silicone and wrapped around the ring, evenly distributing the 2 oz of total stretching power. As a solid one piece design, there are no bulky attachments to get in the way. Stretch your parts and your play time while feeling the perfect amount of swing. The super stretchy erection ring holds you firmly in place and at commanding attention. Your stretching routine just elevated to a whole new level! \$19.00

Ring is 8.5" x 0.75"
Ø1.25" inner ring



STS921

Ball Stretcher

Snap the heavy-duty parachute cuff around his balls, then add up to 6 ounces of force that is evenly distributed by three metal chains. Beginners and enthusiasts alike can easily attain their desired pull with these easy clip-on metal weights. Weights sold separately. \$46.00

Apex Ball Chute



Dive deep into ball play! *Grunt* The Apex Ball Chute is our innovative take on a standard-issue stretcher. Encased in our Body-Safe Silicone, the no-fuss velcro instantly locks, keeping you secure. Three hefty chains are anchored with our INSTA Clip. Add weights, boots, or a leash (sold separately) for the ultimate in ball tugging! \$66.00

APX922

Total Length: 4" / 10.2 cm

Unstretched Diameter: $\phi 1.0"$ / 25 mm

Circumference: 4" / 10.2 cm

Ring Total Length: 1.75" / 4.4 cm

Ring: $\phi 1.5"$ / 3.8 cm

Unstretched Inner: $\phi 0.5"$ / 13 mm



Ball Trap



TRP922

Bring some heavy metal to your naughty activities and feel the satisfying stretch from this weighty ring! Designed to pull down on your sack with 11.6 oz of weight, this metal ball stretcher is crafted for BDSM enthusiasts with a penchant for testicular play. Punish your sub for his bad behavior with extra weights or chains connected with the two attachment points and force him on his knees! Allen Wrench included to undo and secure the screws holding the two halves of this ring together.

Weights not included, for example only \$83.00



Magnetic Ball Trap



Great for CBT enthusiasts or anyone who enjoys a strong tug on their scrotum, this heavy Stainless Steel Ball Trap stretcher has two halves that hold together magnetically. The durable design gives you nearly a pound of weight to pull down on your balls. The powerful magnet makes this device easy to put on and take off, just be careful to keep all your skin within the ring! Use it on your own or with a partner to test your limits. Stainless steel is compatible with all types of lubricant and sanitizes thoroughly with mild soap and warm water. \$92.00



MBS936



BMS922

Big Man Spreader

Get the support you need as four rings of pleasure wrap around you in pleasurable constriction to create sensations that you will not soon forget! The largest ring slides around the base of your man hood, while the next ring grasps your shaft while the testicle rings wrap individually around each, to slightly constrict and separate. \$14.00

Enhancer

The Enhance is an easy to use, comfort fit, strap-and-ring combo that fits over the erect penis for prolonged erotic performance and intensified sensual satisfaction! Slip the genuine leather strap around the balls, and adjust the steel push snaps to secure the perfect orgasmic, tingling tension for a super-sized experience every time. Ease the smooth, flexible rubber ring over your penis to help maintain performance and stamina. The rubber ring slides over the penis to maintain performance and stamina. Perfect for all levels of experience, solo or with a partner. \$14.00



LBS933

ManCage Ball Splitter & Cage



MCA226

Feel the ultimate power as the key holder of your partner's most intimate parts! This ManCage is an absolute must for people who love kinky BDSM! Prevent an erection by caging your penis, which builds up to an extreme release when it is removed. There are several adjustable rings added that secure your penis and balls with a strip. This ManCage offers the extra pleasure of a splitting ball strap, placed tightly between the balls and is connected to the ring. This ManCage comes with several plastic clasps, to be used if extra discretion is required, like security checks. A sturdy metal lock is also included.

\$89.00



55 MM

60 MM



45 MM

50 MM



68



BSK931

SuperSucker

The SuperSucker is the next generation in male pleasure! This innovative product gently and securely grips the balls, surrounding them in textured massage beads, leaving the hands free to engage in other endeavors.

Super Sucker is made of plush ultra Realistic 3.0 (ultraskyn) and features a removable 7 function vibrating

bullet for truly mind-blowing sensations.

3 LR44 batteries required, included \$41.00



HIM108

Strictly Him

Keep your partner stuffed and ready for action! This harness combines a hard, unrelenting metal cock ring with a rippled silicone butt plug. Pull the penis and scrotum through the ring to create a rock hard and ultra-sensitive sensitive erection. Push the tapered tip of the plug in and enjoy your partner's pleasure as the ridges pass in afterward. Tighten the straps so that they feel trapped and enjoy their desperation! The plug can also be removed to play with on its own, with a convenient suction cup base. Not compatible with silicone lubricant. \$84.00

Cock ring measures $\phi 2"$

Plug is 3.75" long, 3.25" insertable, and $\phi 1.5"$

Harness is adjustable 28" - 40" around the waist





AGM225

Cock Blocker Assgasm

Enjoy the thrill of locking up your lover or relinquish control and hand over the keys!

This unit will keep your partner in erotic anticipation by stimulating the prostate while denying the cock - until the moment he is let loose! Cock Blocker Assgasm provides explosive pleasure! The Cock

Blocker Assgasm features a petite sized plug with a thin, tapered shaft to ensure that the plug stays in place when the action heats up. The sturdy stainless steel adjustable ring wraps around your subject's entire package, leaving his shaft locked inside the breathable silicone sleeve.

Additionally, there is a urination hole so you can make him wear it all day long. With unparalleled comfort, this ventilated, flexible silicone chastity cage is the ultimate chastity device for first timers and serious fetish enthusiasts alike. \$76.00



Pull Me



PLM226

Take your pet for a walk with this humiliating ball stretcher and leash set!

The adjustable stretcher will wrap around his scrotum and tug down, creating a unique sensation that

will keep him on edge! Attach the leash to the D-ring on the front or on the straps at the bottom, to pull your plaything around by his balls! You can also

use the D-rings to connect weights so that your slave is further tormented. \$48.00

Leash is 35.5" long

The stretcher is 2" in width and adjusts up to 6"



Humbler

Remind your slave that his place is at your feet with a sick and twisted bondage contraption. The wooden Humbler will keep him on his knees with his ass exposed, locking onto his stretched out scrotum. Curved to fit below his ass, this device will tug on his balls and prevent him from standing, keeping him bent over and at your mercy! Knobs at either end make it easy for you to open and close the Humbler. Clasps allow you to attach or remove a pair of ankle restraints to keep him even further restrained! The comfortable interior of the cuffs ensures that his mind will be on the predicament his testicles are in while he is immobilized. Locking buckles give you the option of furthering his plight, giving him no hope for escape!



HUM212

Cocks sold separately. \$181.00

Humbler is 19.5" long, 1.5" wide
Scrotal opening is 2.5" in length, .75" in width
Cuffs adjust from 7.5" to 10.5"

Crusher Board



For the most intense ball crushing play, you need this cock and balls Crusher Board! This cock and ball board can apply pressure to both the cock and balls or just the balls, by simply inserting your cock and balls through the back hole and screw down the wingnuts to apply more and more pressure. If you desire you can have only your balls crushed - simply slip your cock through the handy cock hole on the other acrylic board. Both plates are made of durable clear acrylic. Each plate measures 5" wide and 7" long. The cock hole is $\phi 1.75"$ and the balls hole measures $\phi 2.25"$ \$83.00



SB206



SWINGS & FURNITURE

Door Swing



DS291

This deluxe Door Swing turns an ordinary door in your home into a love swing in just minutes! Enjoy creative positions with ease, thanks to the padded seat cradle, comfortable stirrups and perfectly placed leverage handles. Holds up to 300 lbs. Support straps cross-stitched and are fully adjustable, allowing you to position your partner any way it pleases you. Sets up in minutes and easily tucks away in the closet or under the bed when the fun is over. Take

it with you on vacation and turn your hotel into the ultimate bondage playground! Satin mask included. \$85.00



Sex Swing



The variety of positions that can be enjoyed with this swing will definitely help spice up your playtime. The swing has padded supports for your back, butt/thighs, and feet/calves. The also has a torque bar for added support for your wild sessions. Extra-wide nylon straps with self-tightening buckles for adjusting for the perfect comfort fit. The installation is quick and

simple and only requires a few common tools (not included). Instructions for installation are included as is the mounting hardware. Please consider the weight-bearing capability of your installation spot. Swing Stand Sold Separately. Packaging consists of a corrugated box or poly bag.

CAUTION: The spring is made to hold up to 200 pounds. If the partner supported by the spring is over 200 pounds or the combined weight placed on the swing exceeds 200 lbs use the chain only. Excessive weight on the spring may damage it. Using only the chain, the swing can up to 350 lbs. In most acts, only one partner's weight will be fully supported. \$229.00



SW4295



Ultimate Sex Swing Stand

Turns any room in your home into a bondage playground! No more holes in the ceiling ever again the free standing stand holds up to 400 pounds and works with any single support Fetish

Fantasy Swings. The heavy duty tubular steel frame provides plenty of stability and freedom of movement, allowing you to explore new positions you and swing your way into ecstasy! The wide standing frame assembles in less than 10 minutes with the provided assembly tool. No additional tools are required! The sturdy frame features built in steel bondage loops to connect all your favorite bondage restraints, cuffs, and ties to create exciting new scenarios. The frame also provides extra support for trying new positions in the swing. Both partners can use the heavy duty overhead bars and crossbars for added support, leverage, and to help maintain balance. Without a swing attached, the stand can serve as a bondage brace to hold your subject in captivity. After playtime, this breaks down in less than 10 minutes and can be stored or transported with ease! \$549.00*



STAND297

**Swing shown for demonstrative purposes only, not included.

Wedge & Ramp

This stylish Wedge & Ramp has slanted positioning pillows that allows for limitless positions and are designed to work together or apart for even more variety. It creates comfort and support to take weight off the knees, back, and neck while providing the perfect angle for many positions. High



LIB295

density foam supports the body and prevents sinking into a bed or couch while offering angles and access for maximum satisfaction and relaxation. Removable, machine-washable microfiber cover feels soft against skin and a

moisture-resistant liner protects foam.

\$398.00

Free direct drop shipping

Jazzy

JAZ296

JAZ294

JAZ292

JAZ291

JAZ297

Practice improvisation and create perfect harmony with your soul mate. With Jazzy, you'll hone your technique and never play the same song twice. This smooth bolster pillow is made from furniture grade foam, covered by a moisture proof interior liner, a soft micro suede zip cover, and at 14" x 18", is small enough to take with you for the best sex the road has to offer! Jazzy is super portable and a sex aid that helps you get into and maintain some of the positions that feel the best for both of you (or just you). Easily and comfortably supporting hips, arms, knees, head, lower back, and more with a tailored slant, some of the more adventurous shapes you may find yourselves in during playtime become much more accessible with Jazzy - and a whole lot more enjoyable. \$159.00 each

🌸 Black 🌸 Purple 🌸 Blue 🌸 Red
🌸 Ocean Blue 🌸 Natural



JAZ298



ESN293

Esse is an intimate dynamic sex chaise, great for and better sex positions, allowing better access during sex, as



ESN291

Esse

sex, as well as for positional sex positions. It's perfect for BDSM and includes wrist cuffs, ankle cuffs, thigh cuffs, tethers, connectors, and a blindfold for playful restraint. Its moisture proof liner is high-density foam for firm, supportive cushioning, lush microfiber cover and moisture-proof inner nylon liner. You'll be able to make the most of your sessions with the useful headrest for rising up knees or adding extra height for standing or bending over positions. Mini-Scoop eliminates center dip making it more flat. Also works independently providing lift during lovemaking.



ESN292

The perfect, versatile piece of furniture with everything you need included! \$1234.00*

🌸 Black 🌸 Red 🌸 Ink Blue

Free direct drop shipping

Bondage Board



BRD291

Turn any space into a sex dungeon! The Bondage Board is designed to bring your fantasies with you, wherever you go! Simply unfold the board and attach your restraints to create a versatile piece of BDSM furniture. With 14 different attachment points, it is easy to achieve a multitude of sexual positions and gain full access to your partner's vulnerable body. The thick padding makes it comfortable to play for as long as you want, and the material is easy to wipe clean. Carrying handles and a discreet exterior make it perfect for a night at your partner's home or taking on vacation, however, it is also convenient for ready use and secret storage in your own home. Confine your lover for bondage play anywhere and anyhow your heart desires! \$529.00



42.5" in total unfolded length 24" wide
21.25" long when folded.

Incredible Sex Stool



ISS294

Take the strain off your thighs and enjoy weightless sex, bounce up and down on your partner with ease, and try new moves and positions! The Incredible Sex Stool is designed to play hard - holding 300 lbs. it's constructed with a heavy duty tubular steel frame which you can take apart for easy storage. The seat is flexible, easy to clean, and made from high-strength TPU. The opening in the seat's center allows you to get closer and go deeper than ever before, for maximum penetration and maximum pleasure! Best of all, it's discreet enough to pass as a normal chair or stool in your bedroom. Be creative, explore new techniques, and do it all with greater ease! \$149.00

overall length 24" 15.5" across the top
17" wide 15" tall



Bangin' Bench



With Bangin' Bench, you can attach your favorite dildo and this sex stool will give you the ride of your life! The Bangin' Bench allows you to simulate sex from the top as you bounce up and down, aided by the stretchy straps of the seat. Remove the red raiser bar and use it to straddle your lovers face and make them pleasure you from below! Use the included strap-on harness to secure a dong or attach a suction cup dildo to the raiser bar. Steel frame. Dildo not included. \$249.00



BEN293



Surrender Sex Chair

Experience the ultimate pleasure with the Surrender Sex Chair. Designed to fulfill your deepest desires, this chair will unlock a world of exhilarating positions and sensations for solo play or with a partner. Use the adjustable lifting



CHR289

system to customize the chair to your preference, ensuring optimal comfort and support. Say goodbye to unwanted sliding or risk with 4 anti-skid pads. When your knees go weak with pleasure, use built in handles for enhanced stability and control. Fine tune penetration

and thrusting as you sit on the 2 strong elastic bands which supports up to 300 lbs. Compatible with all suction cup dildos and vibrators and includes an 8" vibrating dildo to get you started. Add your partner underneath for mind-blowing penetration and oral sex. The sturdy iron construction ensures a safe and secure experience, allowing you to fully immerse yourself in the moment without any worries. Unleash your desires, embrace the possibilities, and surrender to a world of unparalleled pleasure! \$187.00





Bondage Massage Bed

Take erotic restraint to the next level with this Extreme Bondage Table! With a comfortable face hole and fully exposed

crotch hole, this smooth and padded table is built to create opportunities for pleasure and play. The wrist and ankle cuffs that are included are perfect companion items to the table and attach easily to any of the 20 D-Rings so you can restrain your partner as you please them to the brink of ecstasy! Built durable and meant to last, feel free to play a little rougher on this table. The provocative design will excite your lover and give them wild ideas about what the night will bring. Fit the wrist and ankle cuffs on their legs and arms so they feel snug and comfortable, then attach them to the D-Rings to keep them in place. Enjoy them squirming and writhing in pleasure as you play with their fantasies and desires!

Foldable. Includes 4 cuffs.

\$899.00*



BMB292



Extreme Obedience

Act out dark fantasies or prepare for intense impact play scenes when you strap your lover into Extreme Obedience! This heavy duty piece of sex furniture is made of sturdy steel, with comfortable padding for the body, legs, arms, and head of your partner so that you can play vigorously for hours! Keep sub helpless and at your mercy! This ergonomically shaped bench will leave them exposed for spankings, penetration, or both. You will even be able

to go deeper than ever before! The U-shaped headrest will not muffle their moans and squeals as you play. Play without the straps, or keep them fully restrained. The quick-release buckles are easy to use. Adjust the height of the arms and legs, or remove the head support to fully customize the experience. Supports up to 400 pounds.



EX0293

27" high, 50" wide. Torso pad is 18.5" long, 8.5" wide. Arm and ankle pads are 12" long, 4" wide. \$924.00*

Free direct drop shipping

Pleasure Throne



Sit on a plush throne fit for a Queen or King while you get worshiped from below! Pleasure Throne is designed for everyone! Built out of sturdy iron, it can handle up to 265 lbs. Slide your partner's head below your seat and let them give you the attention you desire! Perfect for cunnilingus, analingus, tea bagging, or other kinky



activities, the derriere and private areas can be suspended just out of reach, or they can be lowered to sit right on their face. The backrest and seat are adjustable in height for the one sitting on the throne, and the headrest and head cushions are adjustable in height and width respectively for the one laying on their back so you and your partner enjoy the perfect, ergonomic position. Head cushions keep your partner's head squarely in place so they can't turn their head or look at anything except your derriere! 5 attachment points. Vegan leather cushions. 1 pair cuffs + 5 carabiners. \$909.00*

Your partner is lying on their back, blindfolded, with their wrists cuffed to the base of the throne. You're sitting on top, the seat lowered down so your bottom is right above their face. When you let your body sink into the chair you can feel your privates brush against their mouth. They groan and arch their body, straining to reach you...but you remain just out of reach. You love this part. You love to tease them, torment them. You perch on the edge of the seat, still out of reach, and place your feet on their chest, pushing them down. "You're so very eager... you must want it badly..." you purr, your voice seducing, provoking. They groan and then say, "Yes, please! May I please lick you?" You laugh, toying with the idea of making them wait longer; you love it when they suffer and crave you. You're feeling aroused so you lower all the way down. They arch their back again, their tongue making contact, and you moan in response to their eager kisses.



Overall: 18" L x 21.5" W x 27.5" H
 Seat: 18" L x 16.5" W Seat opening: 13" L x 8" W
 Backrest: 8" L x 11" W Base: 18" L x 21.5" W
 Cuffs adjust 6.5" - 10" circumference.



Free direct drop shipping

PLT298



Queening Chair

Time to take face sitting more seriously with an exquisite piece of BDSM furniture that makes oral more comfortable, therefore longer lasting! Queening stools, or Kinging stools for the gentlemen, allow you to take your rightful position on the throne of your plaything's face. This seat features an adjustable head hammock that perfectly positions them so that their mouth and nose are firmly stuffed into your undercarriage. Perfect for cunnilingus, analingus and tea bagging, this smother box is topped by a comfortable cushion so that you can sit back and relax while you are licked and sucked. Read a book, carry on a conversation, or enjoy a meal while your submissive enjoys one beneath you. If you are feeling extra wicked and attentive you can tease and torment the exposed body lying supine beneath you. Your role, and theirs, should be clear. This Queening chair reinforces your superiority while serving a useful purpose, making oral sex even more enjoyable for both of you. The better it feels, the more you will want it! Not that they have much say in the matter! \$599.00*



QEN299

Kenneled

Immobilize your sub in your favorite position! The Kennel is an adjustable cage with a padded board and optional positioning bars. Lock up your plaything within the coated metal enclosure and get creative! Leave in the comfortably padded leather-like board for extended role play sessions or remove it to punish a naughty pet. Positioning bars allow you to prop up their booty, feet, or chin, but you can also use them to keep their head, shoulders, and waist pushed down. Achieve the exact look that gets your blood pumping hardest! Attach their restraints, not included, to keep them in their place. This versatile cage makes an excellent addition to your dungeon or bedroom, creating a striking image as soon as your partner lays eyes on it. Assembly instructions are included. \$1419.00



REN275



79

44.25" long x 22.5" wide x 28.5" high

Free direct drop shipping



St Andrew's Cross

Optimize your kinky play with this wall mounted St. Andrew's Cross! This plush, padded cross lays flat against the wall so you have more floor space! It is perfect for smaller rooms and gives you more square footage to place other kinky pieces in the room along with the cross. It is also great for rooms that have dual use such as a bedroom where you can hide a cross behind a curtain or dresser. The cross comes in 5 separate pieces and is shipped in a flat package discreetly to your address! Assemble it with the help of a drill and stud finder and place the 5 pieces exactly at the height that you prefer for easy and ergonomic scenes. The ultra plush pads are covered in PVC faux leather, are extra comfortable and easy to clean with a toy cleaner or isopropyl alcohol spray. Along the sides of each leg and arm pad are attachment points where you can attach wrist and ankle cuffs, rope, or other kink accessories! Get your submissive to stand upright for impact play whenever you like with this easy to install, easy to hide and compact St. Andrew's Cross! After mounting the cross securely your wall, grab your favorite toys and kinky implements and place them nearby. After warming up your submissive, attach their wrists and ankles to the cross to keep them in place. You can have them facing forward or facing the wall. Once in place, feel free to use nipple clamps, floggers, whips, rope, gags and more! As you use the whips and floggers on them in your sexy space, you'll notice how much easier it is with a cross that does not take up much space! It allows you to have more room to use the impact tools and move around. \$769.00



Measurements once assembled: 72" long x 37.5" wide
arm/leg pads 29" Long x 6.5" wide
Torso pad 19" long x 15.5" wide

Screwdriver and 20 bolts are included;
Set up requires a drill, drill bits and a stud finder.

Lays flat against the wall so you can save on floorspace and it is easily hidden behind a dresser or curtains when not in use.



SAC279



Free direct drop shipping



Leg Spreader



Get ready to put yourself in a precarious position... of pleasure! This bondage chair is built for making your partner or submissive obedient while you bring them over the edge of ecstasy again and again! It also doubles as a comfortable way to self-serve some powerful poundings! Simply lean back, put your legs up, and enjoy

premium, kinky luxury with this adjustable bondage chair and compatible sex machine attachment! Now you can position yourself or your partner at the angle that works perfectly for you both. This chair has a heavy duty frame that can handle up to 330 lbs (149 kg). With an adjustable backboard, you can sit them upright with legs stretched out or lifted high and wide, or lay them back so their body relaxes and stretches out, their chest and belly exposed to an array of pleasure and pain. Their leg height can also be adjusted for their comfort; get the perfect angle to hit their A-, G-, or P-spot! The whole chair is adjustable both for your comfort and theirs!



LGS299

As they sink into the plush, foam cushions covered with vegan leather, they'll be able to handle longer scenes and their body will have some padding to push into as you play with them! Keep them in place with straps with plastic buckles that easily secure their legs and chest that has a quick release function.

The back of this board have D-Rings for any assortment of bondage. The chair also has a compatible, completely detachable sex

machine that allows you to put on a show for your partner or enjoy yourself! This powerful, thrusting, silicone dildo has an RPM of 195! Swap it out with any with any vac-u-Lock dildo for a custom pounding! Use the corded controller by holding it in your hand as you're strapped into the chair and adjust the speed manually. The variable speed dial lets you get precisely the speed and power you need. Plug into a wall outlet or extension cord to enjoy full power and never have to worry about recharging it or getting batteries! \$2199.00*



Free direct drop shipping

MACHINES

Jaxx Hammer



The Jaxx Hammer is an updated design for self-pleasure or adventures with your partner. With four vibration intensities and two new rhythmic settings, you can experiment with further levels of satisfaction with this rechargeable sex-machine. Three thrusting speeds allow you to get the pounding you are craving. Use the boost button to get even more power out of this cordless toy! Better yet, restrain your partner and make them watch you pleasure yourself - even in the dark! Turn on the optional lights and watch them disappear inside you. The phthalate-free dildo is realistically shaped, with veins for enhanced pleasure. Dildo is 6" insertable. \$269.00

Whip It



The Whip It thrusting, fully automatic sex machine provides an incredible amount of control with thrust of up to 200 thrusts per minute! Set it to the desired height with ease to enjoy targeted stimulation from the most precise angles and extend the reach by attaching the included 7.8" metal extension rod. A security handle and stability base with suction cups ensures safe play, no matter how hard you go. Take control of this powerful sex machine and its included 5" mini dildo, vibrating love egg, and 6" dildo attachment with the corded hand held remote. Also includes additional mount for toys.

1 year warranty. \$583.00

Super Milker Deluxe Stroking Machine



MLK291

Now more cylinders and textures for more ecstasy while the Super Milker does all the hard work for you! It's specifically designed for automatic stroking and sucking, and has a total of 4 cylinders for a variety of sensations.

Just plug the hose into the cylinder and use the dial to control how fast or slow you want it. The large, smooth cylinder is especially designed to suck your shaft, at nearly 9" long and lined with supple rubber for a tight seal. You'll love it so much we include 2! A third long cylinder will surround your entire shaft with soft, delicate nubs for a unique massage. Finally, the smaller cylinder is for more targeted pleasure, such as your cock head or even the clitoris or nipples. Use the Milker alone or with a partner for foreplay, solo play, or anything you can dream up. This updated machine is designed to bring you heightened pleasure with more options. Everything stores in the locked top that includes 2 keys for the ultimate in portable and pleasure and privacy. \$1424.00*



Fuck Machine (Formally Power Banger)

Fuck Machine delivers superior power and endless deep pleasure. The Fuck Machine's adjustable thruster arm can be angled to give you what you want in all your favorite positions, while four strong suction cups at the base keep it securely in place no matter how hard you play.

For players who like it hard and fast, this versatile sex machine offers variable speeds to pound your holes at up to 195 strokes per minute! \$839.00



POW297

Created exclusively for use with attachments from the vac-u-Lock line, and available through Simple Pleasures. 1 year warranty.



Free direct drop shipping

Subversion Stockade



SVN290

Lock up your partner in a sexy, horizontal stockade! This allows them to lay down on their belly instead of standing up or kneeling - perfect for those who want to combine modern dungeon-style restraint systems

and doggy-style penetration! The compatible sex machine that attaches to the stockade or can be used manually. The stockade is made out of durable steel and handles rough play and long sessions well. The hip and waist cushion is also angled so that there is a posterior tilt! This lifts up the booty and makes hitting that sweet spot so much easier! Strap them in with all 10 nylon straps - there are 2 straps per limb and one for the waist and back. The head hangs over the C-shaped neck rest. Plus, 4 cuff attachment points on each of the limb rests! This stockade is adjustable to accommodate different torso lengths. All of the cushions are plush and padded and covered in vegan friendly, PU leather that is comfortable and easy to clean. Your submissive will be bent over, similar to when they're on a spanking horse, so you can penetrate them in doggy style with your body, hands or the sex machine! The sex machine can be used manually and detached or you can attach it to the machine so it automatically thrusts up to 195 RPM! The dildo is made out of TPE. This sex machine plugs into the wall so it never runs out of power! \$1349.00*



Overall measurements at smallest adjustable size:

55" long x 27.5" wide x 22" high

Dildo: 6.75" total; 5.5" insertable, widest \varnothing 1.8" & 2.36" thrusting

Chin rest adjusts 11.5" - 15.5" high; Torso pad 13.5" - 16.5" high

Arm pads adjust 19.75" - 25.75" wide; Leg pads 27.5" - 36"

wide *** Leg pads that attach to the main arm are not adjustable***

Inner thigh pads adjust 12.75" - 15.75" wide;

7" - 12" high

Total Machine adjusts 6.25" - 22" high



Free direct drop shipping



CGRL291

Saddle Up

This is definitely not our first rodeo! Introducing the Saddle Deluxe, a high powered piece of vibrating machinery that will take you on the ride of your life, now



featuring two different attachments! One is a dildo with a smooth shaft and a bulbous head, perfect for when you are craving penetration. The textured base provides extra stimulation to your sensitive exterior. The second accessory is a non-penetrative clitoral bump that is particularly exciting for those who enjoy grinding or humping during masturbation and sex. Mount the comfortable padded seat, settling yourself on the firm, velvet soft attachment of choice until you are against the base. The controller allows you to hang on tight while you cycle through the 5 incredible vibration speeds and 5 pulsations, but it also detaches via a retractable coil so that you can increase or decrease the speed, even as you flail in ecstasy! Hand the remote over to your partner and see how long you can keep your seat when they are in control! Grind yourself into the Saddle or lose yourself in bliss while the motor thrums powerfully against you! How many orgasms can you handle? Wipe clean with mild soap and warm water. Compatible with Silicone and Water Based Lubricants. \$1939.00*

Dildo attachment has a 6" insertion length, Ø1.75"

Clitoral stimulator attachment has a raised bump that is 3" in length, Ø1.5", and 1.25" in height. Bases of attachments are 9.5" in length, 3.75" in width. Saddle measures 13.5" in length, 7.5" in height, 12.25" in width.





Scandalous

BEDDING

Give into your wild side and get wet! This erotic red sheet inspires naughty thoughts before it has even wrapped around your bed. The PVC sheet is ideal for realizing your kinkiest desires and igniting romance without messy clean ups. Get messy with food, lube or any other fantastic fluids while this sensational sheet protects your furniture through thick and thin. Or lay it down on the floor and go to town on making your passionate fantasies a reality. The sheet is perfect for realizing your kinkiest desires without the mess. Just roll up the sheet and all evidence of your naughty encounter disappears! \$61.00



SST291

Rubber Sheet

Dare to try something different with this slick and shiny rubber bed sheet! This dark and sexy sheet fits perfectly over your king size bed with its fitted corners. Just slip it on and climb on top! With its waterproof design, you can get as wet as you want. The grease, liquid, sweat, and lube proof material lets you make a mess while keeping your bed protected and clean. Fits mattresses 78" x 80" \$109.00



SHT295

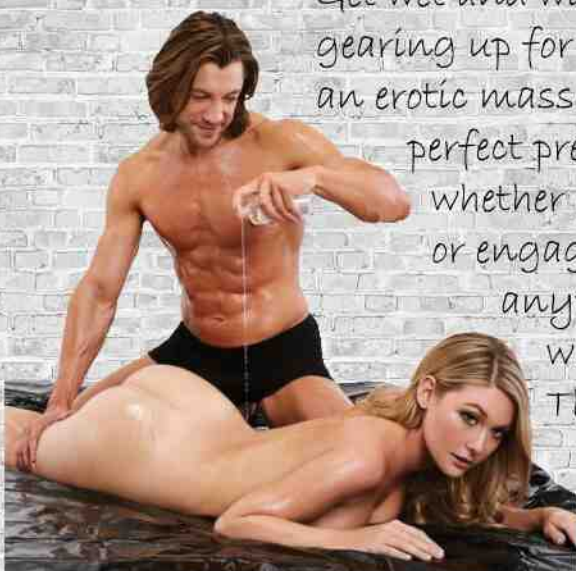
Vinyl Sheet

Get wet and wild with this vinyl bed sheet! Whether you are gearing up for squirting or looking to give an erotic massage, this bed sheet is the

perfect preparation. Use anywhere, whether you're using oils, silicone lubes, or engaging in watersports, transform

anything into a kinky slip & slide! This 100% waterproof oversized sheet is lube and oil safe.

This sheet will protect your home to allow you to let loose! Protect your sheets - this fits up to a California King, providing ample coverage and super easy to clean. \$36.00



SHT296



SHT297

Vinyl Inflatable Sheet

This spill proof sheet creates an inflated border that keeps your bed mess free! The border inflates up to 5.5 inches tall, so you can get slippery, wet, and wild. The soft and slick material is durable, easy to clean, and simple to maintain. Just blow it up and fill it up with a bottle of Nuru Gel, or any liquid you please! The vinyl material is lightweight but strong, and is a great way to get truly dirty. \$99.00

AFTERCARE

Apothecary Aftercare

Apothecary After Care Cream is just what you need to complete your scene, created by kinky people for kinky people. It's just what you need to set a soft, tender after play moment. Formulated with arnica, which can minimize inflammation, coloring, and striping, and soothing chamomile, helps support your skin after intense play. Its creamy yet non-sticky formula spreads evenly and easily. Zero dyes, fragrances, artificial coloring, parabens, glycerin or sugar, or phthalates, and the cream is cruelty free. \$24.00



AAC001

Dr Tush's Aftercare

Dr Tush's pharmacist created formulas contain only 4 all-natural, vegan, and water-based ingredients that create a silky-smooth clear gel that provides an ideal experience. Each type contains antimicrobial and antibacterial properties, and provides an immediate breathable, protective variable that is soothing for pain, irritation, and discomfort after any and all of your play. 1 oz each



87

Butt
DTA006
\$29.00

Vajay
DTA005
\$29.00

Nipples
DTA004
\$24.00

Spank
DTA003
\$38.00

Kink
DTA002
\$38.00



*Our Business is
Your Pleasure!*

815*677*5384

SimplePleasuresParties.com

HelpfulFolks@SimplePleasuresParties.com