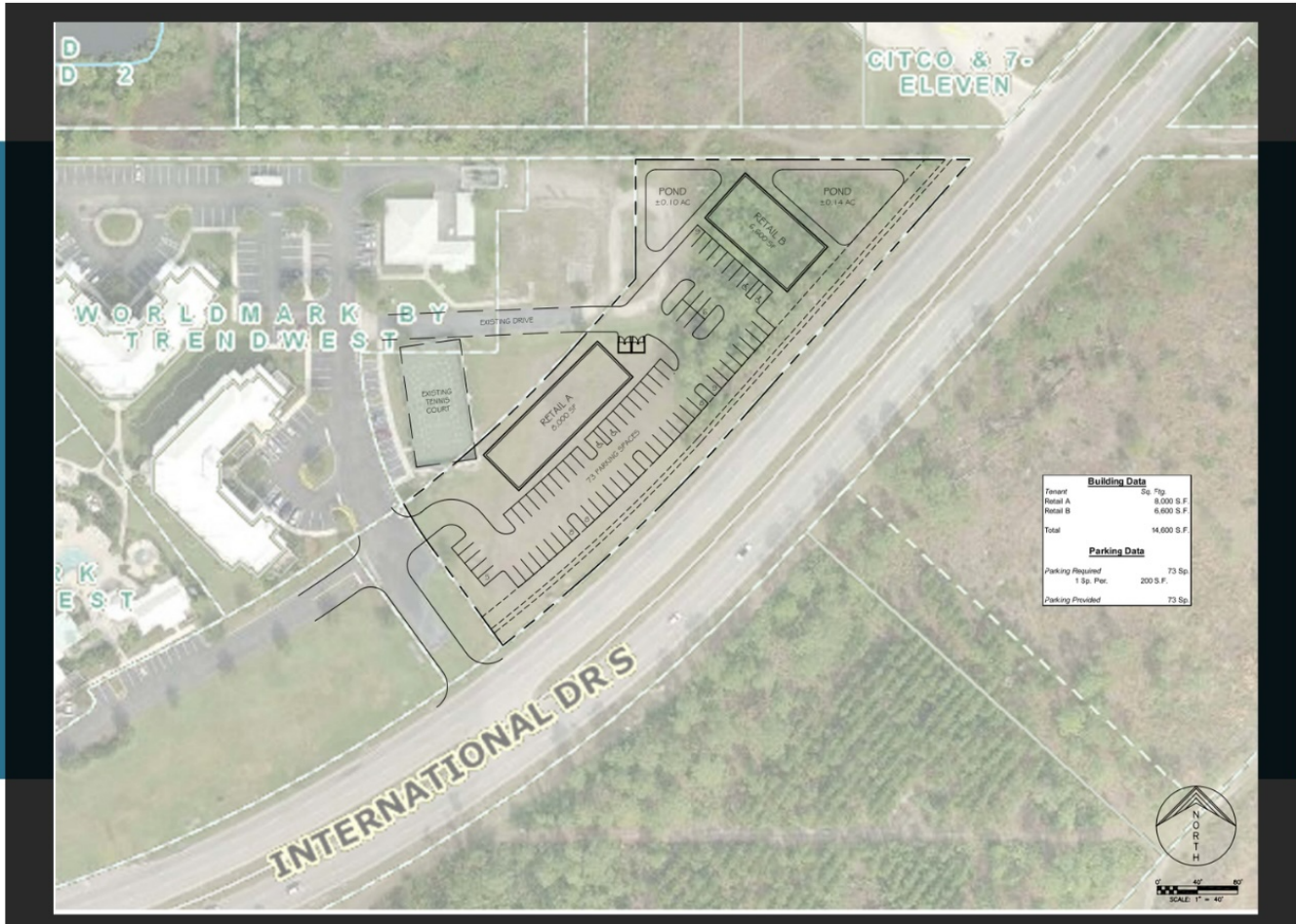




FOR LEASE: IDRIVE & WESTWOOD BLVD



PROPERTY OVERVIEW

The multi-tenant center, strategically situated at the bustling intersection of International Drive and Westwood Blvd in Orlando, Florida, offers premier real estate for businesses seeking high visibility in the heart of the tourist corridor. Among its diverse commercial spaces, a designated area is available for a build-to-suit (BTS) unit, complete with a drive-thru option. The center's prime location places it in the vibrant heart of Orlando's tourist and business district, attracting a diverse mix of locals and visitors.

SITE FEATURES

- 8,000sft center divisible
- Drive thru BTS available
- \$47psf + \$7.50 CAM

CONTACT US NOW

CHAD MAALI

407 963-3131
Chad@Dynamiccrd.com

BASSEL MAALI

407 341-6446
bassel@dynamiccrd.com