

# Greenhill Park Care Home

PRINCEDALE CARE GROUP





# Welcome to Greenhill Park

At Greenhill Park Residential Care Home, we strive to deliver an exceptional level of care in a beautiful environment, supported by our dedicated and long-serving staff who offer personalised assistance tailored to each resident's needs.





# Nurturing hearts, one family at a time.

We are registered with the Care Quality Commission (CQC) to provide residential and personal care services for individuals aged 65 and above. The CQC has evaluated and rated us as "Good" across all categories, reflecting our commitment to delivering exceptional care. We take great pride in our long-standing history of delivering exceptional care.

Our exceptional Manager, Sandra Marskell, became part of our team in 2024. With 30 years of experience in the Health and Social Care sector, Sandra brings a wealth of knowledge and expertise. She is an impactful leader, and is passionate about delivering the very best quality of life for all of our residents.



## Our philosophy

At Greenhill Park Residential Care Home, we believe that every individual deserves to receive high-quality, compassionate care. We are committed to treating our residents with respect, dignity, and kindness, and to helping them achieve their health and wellness goals.



## Our expertise

Our team of skilled and experienced healthcare professionals comprises NVQ-qualified care staff and a dedicated, fully trained team. We utilise evidence-based practices and the latest technology to provide the highest quality care to our residents.



## Unique activities

We offer a range of daily activities led by our amazing activities co-ordinator, Kirsty. You may see Alpacas in our garden, miniature ponies in our dining room, flower making, history discussions, live entertainment and much more!



## What our families think...

When looking for a care home for our parents we wanted somewhere safe, homely and clean...Greenhill has a warm atmosphere and staff to match. They are longstanding staff members, who care for their residents as individuals, try always to maintain standards and respond to problems positively.

We feel confident that this is the best possible place for those we love and are made welcome when we visit too. Our opinions and concerns are listened to and responded to by management and staff, and the care residents receive is thought through and well-delivered.

I would have no hesitation in recommending this home to anyone within the appropriate levels of care required.

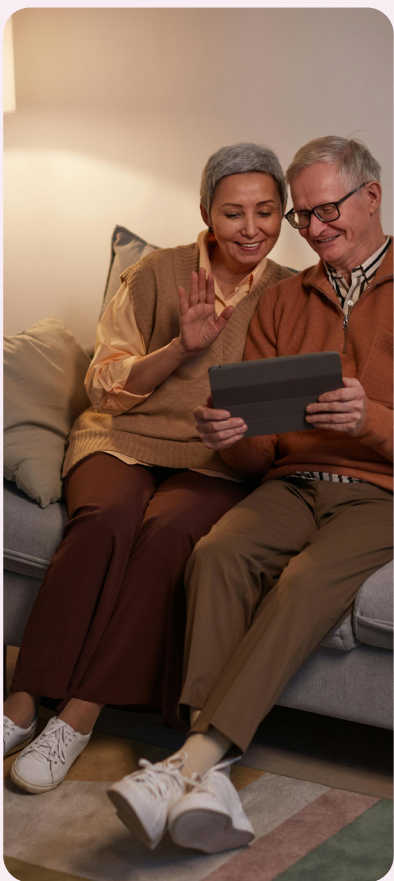
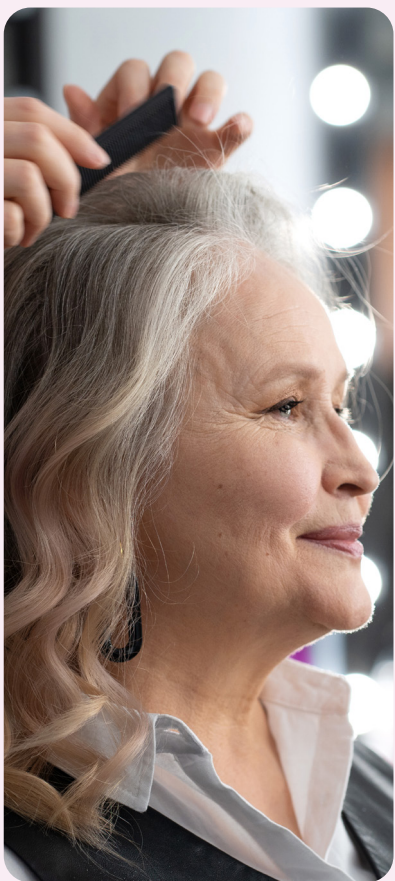
- **Caroline G** (Daughter of Resident)





# Life at Greenhill Park

Our amenities are designed to meet a variety of needs, offering everything from peaceful gardens to engaging activities and nutritious, home-cooked meals.



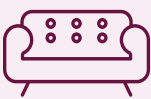
## Choice of Home Cooked Meals

Gather for delicious meals in our inviting dining room, where flavourful home cooked dishes are served in a warm and friendly atmosphere.



## En-Suite Bedrooms

Experience the exceptional amenities at our care home, thoughtfully designed to enhance your comfort and well-being. Each of our stylish en-suite bedrooms provides a personal sanctuary with breathtaking views of the picturesque Cotswolds Vale, allowing you to relax in serene surroundings.



## Variety of Communal Lounges

Our variety of communal lounges invites residents to unwind, engage in conversations, or participate in activities, fostering a sense of community and connection.



## Quiet Lounge & Terrace

For those seeking a peaceful retreat, our quiet lounge offers a serene escape, while our well-stocked library provides an abundance of reading material for your enjoyment. Enjoy the fresh air and stunning scenery on our outdoor terrace, the perfect spot for relaxation or socialising with friends.



## On-Site Hair Salon

Pamper yourself in our dedicated hairdressing salon, where our skilled staff are ready to help you look and feel your best.



## Wi-Fi Throughout

As part of our ongoing commitment to innovation and resident satisfaction, we have installed WiFi technology throughout. This initiative aims to enhance the overall resident experience by offering seamless connectivity, latest entertainment options, and access to a wide range of digital services.





# Greenhill Park Residential Care Home was founded with a passion for providing high-quality residential care to people over the age of 65.



Our Home is family run and part of a small independent care home group called Princedale Care. We are passionate about continually investing in our People, Technology and Environment to create the very best Home for all our Residents.

At Greenhill Park Residential Care Home, we are guided by a set of core values that include compassion, respect, integrity, and excellence. We believe that these values are essential to providing the best possible care to our clients, and we strive to uphold them in everything we do.

We offer a range of care provisions, including skilled residential care, dementia care, respite care and end of life care. Our personalised care is designed to help our residents maintain their independence and achieve their health and wellness goals.



## What our families think...

My mother has been at Greenhill Park Residential Home for nearly four years. During that time, she has been treated like one of the family, her care has been second to none and I have the peace of mind knowing that she is being looked after with love.

There are always highly trained, caring and compassionate staff on hand at all hours of the day and they make time to ensure that the residents are happy and engaged. The house is spotless, the food is delicious and freshly prepared and the entertainment is excellent.

They look after my mum better than I could and I am forever grateful to them for providing her with a safe and friendly environment. Thank you so much, everyone.

- **Theresa W.** (Daughter of Resident)

## Our people



**Sandra Marskell**

Sandra is as our Home Manager and joined Greenhill Park in 2024. With more than 30 years of experience in the Health and Social Care sector across various roles, she is dedicated to providing a high standard of care that meets the emotional, physical, medical, and spiritual needs of every individual. Sandra holds an NVQ Level 5 in Health and Social Care and is a dynamic, passionate leader with a remarkable vision for the future of Greenhill Park.



**Lianne Carling**

Lianne is as our Operations Manager and works closely with Sandra to ensure that the care we provide meets the highest standards. She holds an NVQ Level 5 in Health and Social Care and brings extensive experience in Home Management and Regional Management. As a hands-on leader, Lianne actively ensures the effectiveness of our governance systems and provides support to Sandra in all aspects within our Home.



**Ellie Hill**

Ellie is our Owner and Director, having taken up this position in 2022. Ellie works closely with Sandra and Lianne to ensure that Greenhill Park continues to deliver excellent quality care in the most stunning surroundings. Ellie has grown up working in her family's Care Homes, and enjoys nothing more than seeing our residents thriving and happy in our care. Before this, she worked as a Management Consultant for a global technology company.







**GET IN TOUCH:**

**GREENHILL PARK  
RESIDENTIAL CARE HOME**

24 Greenhill Park Road, Evesham,  
WR11 4NL, United Kingdom



[office@greenhillcare.co.uk](mailto:office@greenhillcare.co.uk)



01386 40836



[greenhillcare.co.uk](http://greenhillcare.co.uk)