

Why MediLUX for advanced skin results?

Due to the extended LED panel and high energy output, MediLUX is the latest in high performance light therapy technology.

Offering near-infrared targeted dermal repair, the versatile LED panel emits a greater amount of energy to maximise results, and treat areas of concern all over the body including:

- Face
- Neck and décolleté
- Stomach
- Upper and lower back

LED light therapy with the MediLUX utilises different coloured, high intensity light emitting diodes (LEDs). These allow your clinician to create tailored LED services to address your specific skin concerns.

Before



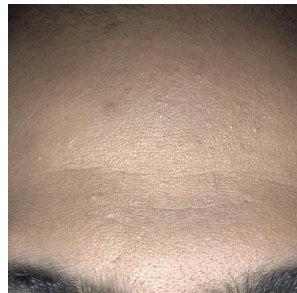
After 5 treatments



Before



After 5 treatments



Eliminate your skin concerns with MediLUX

Acne Management

LED acne management targets acne-prone areas to reduce and prevent acne-causing bacteria, active breakouts and inflammation for a clearer, brighter complexion.

Skin Tone Correction

LED skin tone correction is an anti-inflammatory action to reduce swelling and strengthen capillaries to improve overall skin tone, balance and radiance.

Redness Reduction

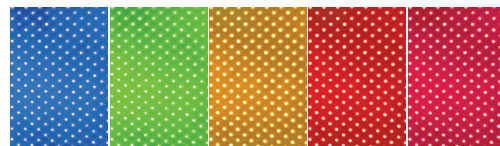
LED redness reduction strengthens vascular networks, soothing rosacea and detoxifying skin redness and irritation.

Age Management

LED age management stimulates collagen and elastin to reduce the appearance of superficial wrinkles, fine lines, and other signs of ageing.

Dermal Repair

LED dermal repair penetrates the subcutaneous layer of the skin stimulating blood flow and reduces skin and tissue inflammation by speeding up healing of lesions and wounds.



MediLUX

Medical Grade Light Therapy

acne clearing | age management | skin rebalancing

 **LUX Series**

Ultimate Versatility for Unprecedented Results

Blue Light (420nm)

Reduces sebaceous activity and acne vulgaris. Works to clear congestion and kills acne-causing bacteria.

Green Light (520nm)

Assists with skin tone correction and aids detoxification to reduce redness and irritation for a balanced, calm complexion.

Yellow Light (590nm)

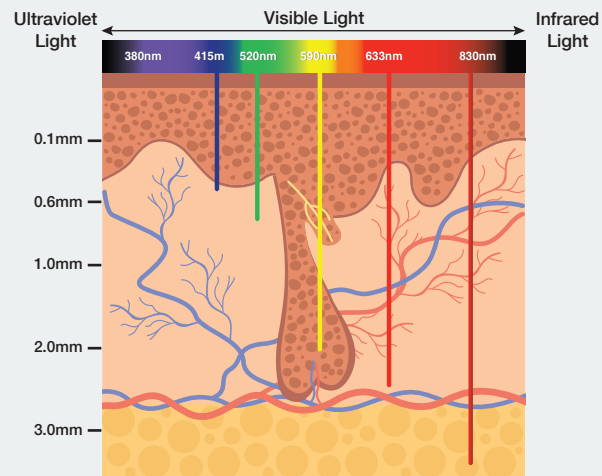
Stimulates collagen production and assists wound repair to naturally heal and regenerate skin from within. Beneficial for rosacea and post-laser treatments.

Red Light (633nm)

Increases blood circulation and lymphatic flow to encourage cellular renewal and promote a youthful complexion.

Near-Infrared Light (830nm)

Increases white blood cell production to regenerate, rejuvenate, tighten and repair inflamed and ageing skin. Works to boost ATP for deep cellular regeneration and wound healing.



Treatment Protocol



Pre-Treatment Cleanse



Skin Preparation



Light Therapy Treatment



Post-Treatment Care

Frequently Asked Questions

How do MediLUX treatments work?

LED treatments with MediLUX utilise 1,500 powerful light emitting diodes ranging from blue to green, yellow, red and near-infrared. Each light wavelength targets different specific skin concerns and treatment is commonly used to address acne congestion, facial redness, pigmentation, uneven tone, fine lines, wrinkles and signs of ageing.

Are MediLUX treatments suitable for me?

MediLUX treatments are safe, comfortable and suitable for all skin types. During consultation, your clinician will discuss a treatment plan tailored to your individual skin concerns.

What is the difference between Red Light LED and Near-Infrared LED?

Red light targets the dermal layers, providing excellent results in collagen and elastin synthesis. Near-infrared light is able to penetrate even deeper in the dermis — reaching the subcutaneous layer of the skin and muscle to enable deep tissue repair and cellular regeneration.

Can MediLUX LED treatments be combined with other aesthetic treatments?

MediLUX treatments are restorative by nature and will optimise results when paired with other skincare-based and technology-enhanced treatments.

