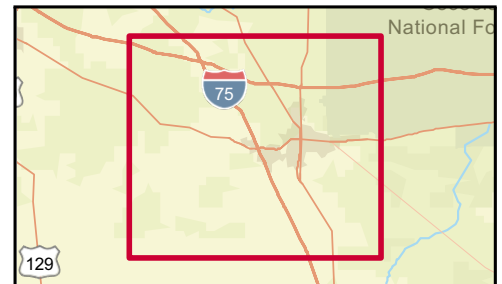
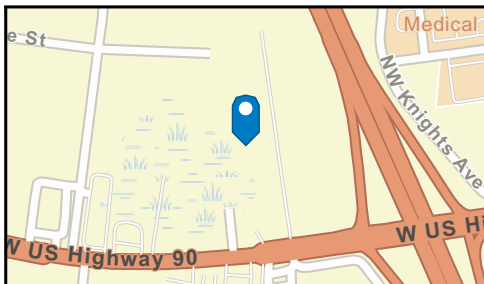
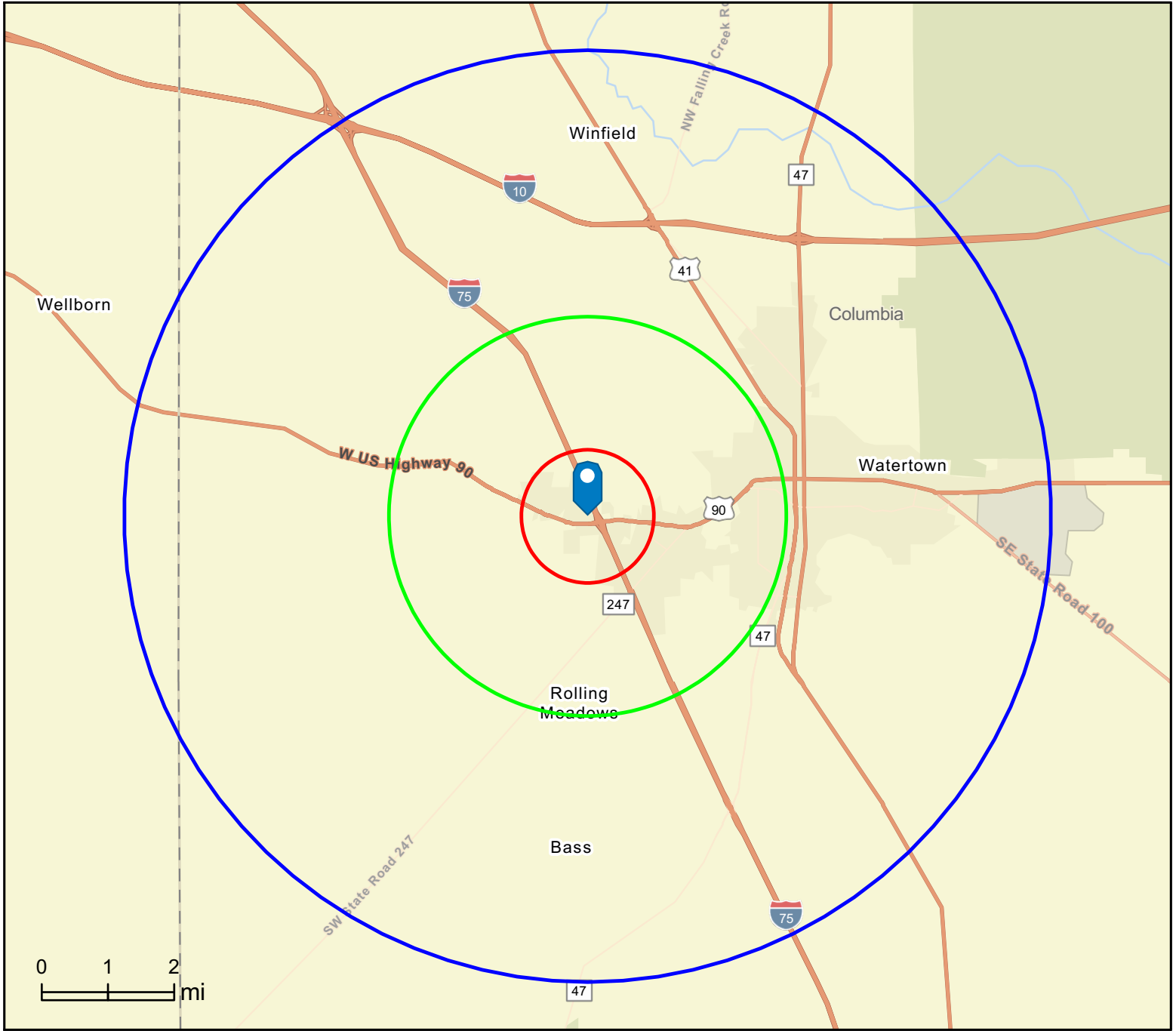


Site Map

228 NW Centurion Ct, Lake City, FL, 32055, USA
Ring: 1 mile radius

Latitude: 30.1812
Longitude: -82.6918





Market Profile

228 NW Centurion Ct, Lake City, FL, 32055, USA
 Rings: 1, 3, 7 mile radii

Latitude: 30.1812
 Longitude: -82.6918

	1 mile	3 mile	7 mile
Population Summary			
2010 Total Population	1,735	13,951	41,037
2020 Total Population	1,895	15,435	42,563
2020 Group Quarters	50	592	1,470
2024 Total Population	1,940	15,949	43,847
2024 Group Quarters	52	673	1,650
2029 Total Population	1,961	16,228	44,534
2024-2029 Annual Rate	0.22%	0.35%	0.31%
2024 Total Daytime Population	4,844	19,847	49,076
Workers	3,696	10,528	23,540
Residents	1,148	9,319	25,536
Household Summary			
2010 Households	662	5,607	16,025
2010 Average Household Size	2.56	2.43	2.47
2020 Total Households	734	6,189	16,750
2020 Average Household Size	2.51	2.40	2.45
2024 Households	765	6,452	17,429
2024 Average Household Size	2.47	2.37	2.42
2029 Households	789	6,695	18,053
2029 Average Household Size	2.42	2.32	2.38
2024-2029 Annual Rate	0.62%	0.74%	0.71%
2010 Families	461	3,736	10,763
2010 Average Family Size	3.00	2.91	2.97
2024 Families	503	4,110	11,213
2024 Average Family Size	3.09	2.98	3.02
2029 Families	516	4,257	11,586
2029 Average Family Size	3.03	2.92	2.96
2024-2029 Annual Rate	0.51%	0.71%	0.66%
Housing Unit Summary			
2000 Housing Units	578	4,595	15,221
Owner Occupied Housing Units	52.9%	63.6%	65.2%
Renter Occupied Housing Units	36.5%	28.3%	24.7%
Vacant Housing Units	10.6%	8.0%	10.1%
2010 Housing Units	755	6,221	18,224
Owner Occupied Housing Units	50.6%	57.2%	59.5%
Renter Occupied Housing Units	37.0%	32.9%	28.4%
Vacant Housing Units	12.3%	9.9%	12.1%
2020 Housing Units	801	6,628	18,533
Owner Occupied Housing Units	51.2%	57.2%	59.2%
Renter Occupied Housing Units	40.4%	36.2%	31.2%
Vacant Housing Units	8.4%	7.6%	9.7%
2024 Housing Units	823	6,873	19,171
Owner Occupied Housing Units	52.9%	58.8%	60.7%
Renter Occupied Housing Units	40.1%	35.1%	30.2%
Vacant Housing Units	7.0%	6.1%	9.1%
2029 Housing Units	840	7,076	19,725
Owner Occupied Housing Units	57.6%	63.3%	64.7%
Renter Occupied Housing Units	36.3%	31.3%	26.9%
Vacant Housing Units	6.1%	5.4%	8.5%

Data Note: Household population includes persons not residing in group quarters. Average Household Size is the household population divided by total households. Persons in families include the householder and persons related to the householder by birth, marriage, or adoption. Per Capita Income represents the income received by all persons aged 15 years and over divided by the total population.

Source: Esri forecasts for 2024 and 2029. U.S. Census Bureau 2000 and 2010 decennial Census data converted by Esri into 2020 geography.

	1 mile	3 mile	7 mile
2024 Households by Income			
Household Income Base	765	6,452	17,429
<\$15,000	14.6%	13.4%	15.1%
\$15,000 - \$24,999	6.5%	5.9%	5.9%
\$25,000 - \$34,999	7.7%	7.1%	7.5%
\$35,000 - \$49,999	9.5%	9.4%	9.0%
\$50,000 - \$74,999	22.0%	22.8%	22.3%
\$75,000 - \$99,999	12.3%	14.7%	13.3%
\$100,000 - \$149,999	14.2%	14.3%	14.9%
\$150,000 - \$199,999	6.7%	5.5%	6.6%
\$200,000+	6.3%	6.9%	5.5%
Average Household Income	\$84,520	\$86,849	\$82,984
2029 Households by Income			
Household Income Base	789	6,695	18,053
<\$15,000	12.8%	11.5%	13.5%
\$15,000 - \$24,999	4.8%	4.2%	4.4%
\$25,000 - \$34,999	6.1%	5.6%	6.0%
\$35,000 - \$49,999	7.7%	7.5%	7.0%
\$50,000 - \$74,999	22.6%	23.0%	22.3%
\$75,000 - \$99,999	13.1%	15.5%	13.9%
\$100,000 - \$149,999	17.1%	17.3%	18.0%
\$150,000 - \$199,999	8.4%	7.1%	8.4%
\$200,000+	7.4%	8.4%	6.6%
Average Household Income	\$97,198	\$101,027	\$95,909
2024 Owner Occupied Housing Units by Value			
Total	435	4,042	11,633
<\$50,000	3.2%	4.6%	7.9%
\$50,000 - \$99,999	1.8%	4.0%	8.1%
\$100,000 - \$149,999	3.0%	6.0%	8.2%
\$150,000 - \$199,999	1.8%	8.4%	8.5%
\$200,000 - \$249,999	21.6%	20.5%	15.6%
\$250,000 - \$299,999	23.9%	18.3%	18.1%
\$300,000 - \$399,999	30.1%	26.4%	22.0%
\$400,000 - \$499,999	4.1%	3.6%	3.8%
\$500,000 - \$749,999	2.8%	3.1%	4.6%
\$750,000 - \$999,999	1.1%	1.3%	0.7%
\$1,000,000 - \$1,499,999	6.4%	2.4%	1.3%
\$1,500,000 - \$1,999,999	0.0%	0.0%	0.0%
\$2,000,000 +	0.0%	1.5%	1.3%
Average Home Value	\$355,287	\$325,903	\$291,430
2029 Owner Occupied Housing Units by Value			
Total	484	4,478	12,755
<\$50,000	2.5%	4.0%	7.2%
\$50,000 - \$99,999	1.4%	3.4%	7.4%
\$100,000 - \$149,999	2.1%	5.1%	7.4%
\$150,000 - \$199,999	1.4%	7.5%	7.7%
\$200,000 - \$249,999	18.2%	17.5%	14.0%
\$250,000 - \$299,999	19.8%	15.6%	16.0%
\$300,000 - \$399,999	32.9%	29.1%	23.9%
\$400,000 - \$499,999	5.0%	4.2%	4.4%
\$500,000 - \$749,999	4.3%	4.5%	6.7%
\$750,000 - \$999,999	2.5%	3.2%	1.5%
\$1,000,000 - \$1,499,999	10.3%	3.7%	2.1%
\$1,500,000 - \$1,999,999	0.0%	0.0%	0.0%
\$2,000,000 +	0.0%	2.2%	1.7%
Average Home Value	\$415,792	\$377,937	\$327,895

Data Note: Income represents the preceding year, expressed in current dollars. Household income includes wage and salary earnings, interest dividends, net rents, pensions, SSI and welfare payments, child support, and alimony.

Source: Esri forecasts for 2024 and 2029. U.S. Census Bureau 2000 and 2010 decennial Census data converted by Esri into 2020 geography.

Market Profile

228 NW Centurion Ct, Lake City, FL, 32055, USA
Rings: 1, 3, 7 mile radii

Latitude: 30.1812
Longitude: -82.6918

	1 mile	3 mile	7 mile
Median Household Income			
2024	\$60,465	\$63,020	\$61,359
2029	\$68,828	\$72,350	\$70,106
Median Home Value			
2024	\$288,702	\$267,982	\$254,793
2029	\$314,465	\$289,993	\$269,694
Per Capita Income			
2024	\$33,640	\$34,770	\$32,836
2029	\$39,427	\$41,217	\$38,699
Median Age			
2010	37.1	38.8	39.8
2020	39.2	40.4	41.7
2024	39.1	40.6	41.9
2029	39.4	41.1	42.5
2020 Population by Age			
Total	1,895	15,435	42,563
0 - 4	6.1%	5.6%	5.5%
5 - 9	6.9%	6.6%	6.3%
10 - 14	6.9%	6.6%	6.8%
15 - 24	11.6%	11.6%	11.4%
25 - 34	13.1%	12.6%	11.9%
35 - 44	11.6%	12.2%	11.9%
45 - 54	11.5%	11.1%	11.6%
55 - 64	12.1%	12.8%	14.1%
65 - 74	11.6%	11.6%	12.1%
75 - 84	6.7%	7.1%	6.5%
85 +	2.0%	2.3%	2.1%
18 +	76.0%	77.3%	77.5%
2024 Population by Age			
Total	1,938	15,949	43,846
0 - 4	6.2%	5.7%	5.5%
5 - 9	6.4%	6.0%	5.9%
10 - 14	6.4%	6.4%	6.3%
15 - 24	13.0%	12.3%	11.9%
25 - 34	12.6%	12.5%	11.7%
35 - 44	12.6%	12.9%	12.5%
45 - 54	10.4%	11.0%	11.4%
55 - 64	11.9%	12.1%	12.9%
65 - 74	10.7%	11.1%	12.0%
75 - 84	7.5%	7.6%	7.4%
85 +	2.1%	2.5%	2.3%
18 +	77.1%	78.1%	78.3%
2029 Population by Age			
Total	1,960	16,228	44,533
0 - 4	6.3%	5.7%	5.5%
5 - 9	6.1%	5.6%	5.6%
10 - 14	5.9%	5.7%	5.9%
15 - 24	12.4%	11.9%	11.5%
25 - 34	13.4%	13.0%	12.2%
35 - 44	13.1%	13.0%	12.4%
45 - 54	10.2%	11.4%	11.8%
55 - 64	11.1%	11.3%	11.8%
65 - 74	10.7%	11.5%	12.5%
75 - 84	8.3%	8.0%	8.2%
85 +	2.7%	2.9%	2.7%
18 +	78.1%	79.3%	79.4%

Source: Esri forecasts for 2024 and 2029. U.S. Census Bureau 2000 and 2010 decennial Census data converted by Esri into 2020 geography.

Market Profile

228 NW Centurion Ct, Lake City, FL, 32055, USA
Rings: 1, 3, 7 mile radii

Latitude: 30.1812
Longitude: -82.6918

	1 mile	3 mile	7 mile
2020 Population by Sex			
Males	910	7,473	20,970
Females	985	7,962	21,593
2024 Population by Sex			
Males	941	7,851	21,897
Females	999	8,098	21,950
2029 Population by Sex			
Males	946	7,967	22,115
Females	1,016	8,261	22,419
2010 Population by Race/Ethnicity			
Total	1,735	13,951	41,037
White Alone	78.2%	77.8%	75.4%
Black Alone	14.2%	15.4%	19.9%
American Indian Alone	0.4%	0.3%	0.4%
Asian Alone	2.9%	2.5%	1.3%
Pacific Islander Alone	0.1%	0.1%	0.0%
Some Other Race Alone	1.8%	1.4%	1.0%
Two or More Races	2.4%	2.6%	2.0%
Hispanic Origin	6.9%	5.5%	4.4%
Diversity Index	44.8	43.5	44.3
2020 Population by Race/Ethnicity			
Total	1,895	15,435	42,563
White Alone	68.9%	69.6%	68.8%
Black Alone	17.8%	17.9%	20.2%
American Indian Alone	0.3%	0.3%	0.3%
Asian Alone	3.1%	2.9%	1.7%
Pacific Islander Alone	0.1%	0.1%	0.1%
Some Other Race Alone	3.0%	2.5%	2.0%
Two or More Races	6.9%	6.7%	6.8%
Hispanic Origin	9.6%	8.3%	7.1%
Diversity Index	57.6	55.7	54.9
2024 Population by Race/Ethnicity			
Total	1,940	15,949	43,847
White Alone	67.5%	68.5%	67.7%
Black Alone	18.5%	18.4%	20.7%
American Indian Alone	0.3%	0.3%	0.3%
Asian Alone	3.4%	3.2%	1.9%
Pacific Islander Alone	0.2%	0.1%	0.1%
Some Other Race Alone	3.1%	2.7%	2.2%
Two or More Races	7.1%	6.8%	7.0%
Hispanic Origin	10.2%	8.8%	7.6%
Diversity Index	59.4	57.2	56.3
2029 Population by Race/Ethnicity			
Total	1,961	16,229	44,534
White Alone	65.6%	66.8%	66.2%
Black Alone	19.3%	19.1%	21.5%
American Indian Alone	0.3%	0.3%	0.3%
Asian Alone	3.7%	3.5%	2.1%
Pacific Islander Alone	0.2%	0.1%	0.1%
Some Other Race Alone	3.3%	2.8%	2.3%
Two or More Races	7.7%	7.4%	7.6%
Hispanic Origin	11.1%	9.5%	8.2%
Diversity Index	61.8	59.4	58.3

Data Note: Persons of Hispanic Origin may be of any race. The Diversity Index measures the probability that two people from the same area will be from different race/ethnic groups.

Source: Esri forecasts for 2024 and 2029. U.S. Census Bureau 2000 and 2010 decennial Census data converted by Esri into 2020 geography.

	1 mile	3 mile	7 mile
2020 Population by Relationship and Household Type			
Total	1,895	15,435	42,563
In Households	97.4%	96.2%	96.5%
Householder	39.2%	39.3%	38.9%
Opposite-Sex Spouse	17.1%	16.9%	16.3%
Same-Sex Spouse	0.2%	0.2%	0.1%
Opposite-Sex Unmarried Partner	3.1%	2.7%	2.9%
Same-Sex Unmarried Partner	0.1%	0.1%	0.1%
Biological Child	26.4%	25.0%	24.6%
Adopted Child	0.5%	0.6%	0.8%
Stepchild	1.8%	1.7%	1.7%
Grandchild	2.7%	2.8%	3.7%
Brother or Sister	0.8%	0.9%	1.0%
Parent	1.0%	1.0%	1.1%
Parent-in-law	0.2%	0.2%	0.2%
Son-in-law or Daughter-in-law	0.4%	0.3%	0.4%
Other Relatives	1.1%	1.4%	1.6%
Foster Child	0.1%	0.0%	0.1%
Other Nonrelatives	2.8%	2.9%	2.9%
In Group Quarters	2.6%	3.8%	3.5%
Institutionalized	2.4%	3.3%	3.0%
Noninstitutionalized	0.2%	0.5%	0.5%
2024 Population 25+ by Educational Attainment			
Total	1,321	11,116	30,808
Less than 9th Grade	2.2%	2.9%	2.5%
9th - 12th Grade, No Diploma	4.2%	4.8%	8.1%
High School Graduate	27.9%	26.9%	27.9%
GED/Alternative Credential	4.8%	4.4%	7.6%
Some College, No Degree	21.3%	21.7%	20.9%
Associate Degree	11.7%	10.6%	10.5%
Bachelor's Degree	19.8%	20.2%	15.2%
Graduate/Professional Degree	8.1%	8.6%	7.5%
2024 Population 15+ by Marital Status			
Total	1,571	13,074	36,041
Never Married	33.5%	29.9%	29.0%
Married	46.3%	48.5%	49.2%
Widowed	7.1%	8.0%	7.6%
Divorced	13.1%	13.6%	14.2%
2024 Civilian Population 16+ in Labor Force			
Civilian Population 16+	840	6,920	19,167
Population 16+ Employed	96.1%	96.0%	95.0%
Population 16+ Unemployment rate	3.9%	4.0%	5.0%
Population 16-24 Employed	11.2%	9.6%	10.8%
Population 16-24 Unemployment rate	14.3%	14.6%	15.6%
Population 25-54 Employed	68.0%	68.8%	64.6%
Population 25-54 Unemployment rate	2.7%	2.8%	3.9%
Population 55-64 Employed	15.2%	16.2%	16.9%
Population 55-64 Unemployment rate	2.4%	1.8%	2.4%
Population 65+ Employed	5.6%	5.4%	7.7%
Population 65+ Unemployment rate	2.2%	4.3%	2.0%

	1 mile	3 mile	7 mile
2024 Employed Population 16+ by Industry			
Total	807	6,644	18,213
Agriculture/Mining	0.4%	0.6%	1.1%
Construction	7.4%	8.8%	8.2%
Manufacturing	6.9%	4.2%	5.2%
Wholesale Trade	0.7%	0.6%	1.6%
Retail Trade	14.3%	15.0%	13.7%
Transportation/Utilities	5.8%	5.5%	6.0%
Information	0.9%	1.2%	0.6%
Finance/Insurance/Real Estate	3.0%	2.6%	2.1%
Services	51.9%	51.3%	51.9%
Public Administration	8.6%	10.2%	9.7%
2024 Employed Population 16+ by Occupation			
Total	807	6,642	18,210
White Collar	58.6%	57.6%	55.8%
Management/Business/Financial	14.4%	13.4%	12.0%
Professional	21.3%	23.5%	22.6%
Sales	11.4%	10.8%	10.8%
Administrative Support	11.5%	10.0%	10.4%
Services	20.4%	20.9%	20.8%
Blue Collar	20.9%	21.4%	23.4%
Farming/Forestry/Fishing	0.1%	0.4%	0.5%
Construction/Extraction	3.0%	4.2%	4.5%
Installation/Maintenance/Repair	3.6%	6.8%	5.3%
Production	5.5%	3.2%	4.1%
Transportation/Material Moving	8.8%	6.8%	9.0%
2020 Households by Type			
Total	734	6,189	16,750
Married Couple Households	43.1%	43.2%	42.3%
With Own Children <18	13.2%	14.1%	13.4%
Without Own Children <18	29.8%	29.1%	29.0%
Cohabiting Couple Households	7.8%	7.2%	7.6%
With Own Children <18	3.4%	3.0%	3.1%
Without Own Children <18	4.4%	4.2%	4.5%
Male Householder, No Spouse/Partner	17.6%	18.0%	19.4%
Living Alone	11.6%	12.7%	13.1%
65 Years and over	4.5%	4.4%	4.8%
With Own Children <18	1.5%	1.5%	1.7%
Without Own Children <18, With Relatives	2.7%	2.5%	3.2%
No Relatives Present	1.8%	1.2%	1.5%
Female Householder, No Spouse/Partner	31.6%	31.7%	30.7%
Living Alone	15.0%	16.5%	15.1%
65 Years and over	7.8%	9.2%	8.3%
With Own Children <18	9.3%	7.5%	6.7%
Without Own Children <18, With Relatives	6.4%	6.6%	7.8%
No Relatives Present	1.0%	1.1%	1.1%
2020 Households by Size			
Total	734	6,189	16,750
1 Person Household	26.6%	29.2%	28.2%
2 Person Household	36.0%	34.1%	34.2%
3 Person Household	14.3%	15.7%	15.4%
4 Person Household	12.5%	11.0%	11.2%
5 Person Household	6.1%	5.3%	6.1%
6 Person Household	2.7%	2.7%	2.9%
7 + Person Household	1.9%	1.9%	2.0%



Market Profile

228 NW Centurion Ct, Lake City, FL, 32055, USA
 Rings: 1, 3, 7 mile radii

Latitude: 30.1812
 Longitude: -82.6918

	1 mile	3 mile	7 mile
2020 Households by Tenure and Mortgage Status			
Total	734	6,189	16,750
Owner Occupied	55.9%	61.3%	65.5%
Owned with a Mortgage/Loan	34.5%	37.4%	37.4%
Owned Free and Clear	21.3%	23.9%	28.1%
Renter Occupied	44.1%	38.7%	34.5%
2024 Affordability, Mortgage and Wealth			
Housing Affordability Index	83	94	96
Percent of Income for Mortgage	29.9%	26.6%	26.0%
Wealth Index	72	79	73
2020 Housing Units By Urban/ Rural Status			
Total	801	6,628	18,533
Urban Housing Units	81.9%	78.3%	58.5%
Rural Housing Units	18.1%	21.7%	41.5%
2020 Population By Urban/ Rural Status			
Total	1,895	15,435	42,563
Urban Population	82.4%	79.1%	58.3%
Rural Population	17.6%	20.9%	41.7%

Data Note: Households with children include any households with people under age 18, related or not. Multigenerational households are families with 3 or more parent-child relationships. Unmarried partner households are usually classified as nonfamily households unless there is another member of the household related to the householder. Multigenerational and unmarried partner households are reported only to the tract level. Esri estimated block group data, which is used to estimate polygons or non-standard geography.

Source: Esri forecasts for 2024 and 2029. U.S. Census Bureau 2000 and 2010 decennial Census data converted by Esri into 2020 geography.

Market Profile

228 NW Centurion Ct, Lake City, FL, 32055, USA
Rings: 1, 3, 7 mile radii

Latitude: 30.1812
Longitude: -82.6918

	1 mile	3 mile	7 mile
Top 3 Tapestry Segments			
1.	Small Town Sincerity (12C)	Midlife Constants (5E)	Midlife Constants (5E)
2.	Old and Newcomers (8F)	Small Town Sincerity (12C)	Southern Satellites (10A)
3.	Midlife Constants (5E)	Set to Impress (11D)	Small Town Sincerity (12C)
2024 Consumer Spending			
Apparel & Services: Total \$	\$1,384,753	\$11,884,652	\$30,079,473
Average Spent	\$1,810.13	\$1,842.01	\$1,725.83
Spending Potential Index	76	77	72
Education: Total \$	\$972,764	\$8,041,718	\$19,949,092
Average Spent	\$1,271.59	\$1,246.39	\$1,144.59
Spending Potential Index	74	72	66
Entertainment/Recreation: Total \$	\$2,358,173	\$20,545,566	\$53,382,034
Average Spent	\$3,082.58	\$3,184.37	\$3,062.83
Spending Potential Index	75	78	75
Food at Home: Total \$	\$4,273,964	\$37,487,452	\$97,646,211
Average Spent	\$5,586.88	\$5,810.21	\$5,602.51
Spending Potential Index	77	80	77
Food Away from Home: Total \$	\$2,274,702	\$19,725,099	\$50,611,588
Average Spent	\$2,973.47	\$3,057.21	\$2,903.87
Spending Potential Index	76	79	75
Health Care: Total \$	\$4,509,354	\$40,971,964	\$109,457,996
Average Spent	\$5,894.58	\$6,350.27	\$6,280.22
Spending Potential Index	77	83	82
HH Furnishings & Equipment: Total \$	\$1,840,801	\$16,100,423	\$42,003,101
Average Spent	\$2,406.28	\$2,495.42	\$2,409.95
Spending Potential Index	76	79	76
Personal Care Products & Services: Total \$	\$574,735	\$4,877,940	\$12,424,395
Average Spent	\$751.29	\$756.04	\$712.86
Spending Potential Index	75	76	72
Shelter: Total \$	\$15,233,080	\$128,232,921	\$323,820,641
Average Spent	\$19,912.52	\$19,874.91	\$18,579.42
Spending Potential Index	75	75	70
Support Payments/Cash Contributions/Gifts in Kind: Total \$	\$2,029,604	\$18,758,005	\$49,988,116
Average Spent	\$2,653.08	\$2,907.32	\$2,868.10
Spending Potential Index	76	83	82
Travel: Total \$	\$1,711,887	\$14,523,991	\$37,294,377
Average Spent	\$2,237.76	\$2,251.08	\$2,139.79
Spending Potential Index	74	74	71
Vehicle Maintenance & Repairs: Total \$	\$875,567	\$7,715,306	\$20,061,962
Average Spent	\$1,144.53	\$1,195.80	\$1,151.07
Spending Potential Index	77	81	78

Data Note: Consumer spending shows the amount spent on a variety of goods and services by households that reside in the area. Expenditures are shown by broad budget categories that are not mutually exclusive. Consumer spending does not equal business revenue. Total and Average Amount Spent Per Household represent annual figures. The Spending Potential Index represents the amount spent in the area relative to a national average of 100.

Source: Consumer Spending data are derived from the 2019 and 2020 Consumer Expenditure Surveys, Bureau of Labor Statistics. Esri.

Source: Esri forecasts for 2024 and 2029. U.S. Census Bureau 2000 and 2010 decennial Census data converted by Esri into 2020 geography.