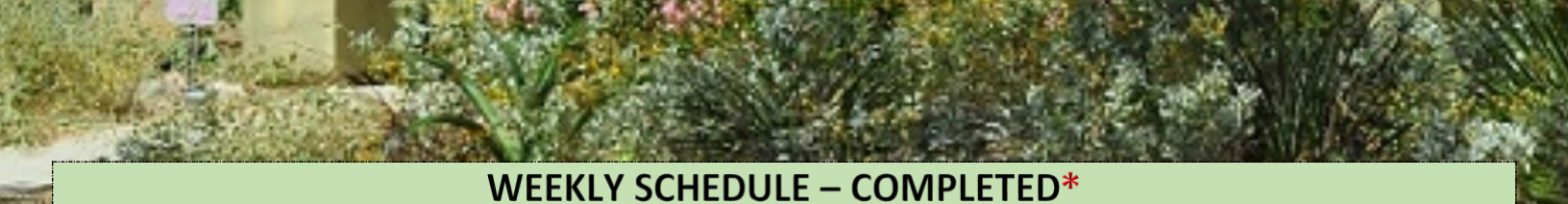




Oscar Rodriguez –Account Manager  
[o.rodriguez@aaalandscape.com](mailto:o.rodriguez@aaalandscape.com)  
 (520) 429-7959

After Hours Emergency  
 Please contact.  
 (520) 408-4322





## WEEKLY SCHEDULE – COMPLETED\*

*03/17/2025-03/21/2025*

### Monday 17-Week 1 (Red)

- **Crew 5 man**
- Work started on Civano Blvd from morning sky to cerulean
- Yucca plants were trimmed back
- Grasses were thinned out on medians and curb strips down civano blvd
- Weeds were pulled out with hula hoe
- Debris all picked up
- Piles from resident were picked up from quarterly area
- Entrance to property from Drexal and Civano detailed
- 5 man crew 2 trucks

### Tuesday 18-Week 1 cont (Red)

- **Crew 5 man**
- Continued week one on Civano blvd
- Started work on Drexal entrance headed north down Civano blvd
- Trimmed back remaining birds of paradise in area
- Continued thinning out of yuccas, grasses and desert spoons
- Blew off all DG of debris
- Detailed main property entrance by houghton

### Wednesday 19-weekly work (green)

- **1 man gator crew**
- Trash pick up
- Mailbox locations detailed
- **crew 2 man**
- Detailed around all turf areas

- **Mower 1 man**
- Cut all turf areas
- **Crew 5 man**
- Seven Generations and Houghton entrance detailed to main clubhouse

### Thursday 20-week 1 (Red)

- **crew 5 man**
- Thunder sky from civano headed to seven generations
- Blew off debris from curb strips to road
- George Tolman detailed all DG
- Morning sky way all shrubs were trimmed back and weeds pulled out

### Friday 21-week 1 (Red)

- **crew 5 man**
- Isidore Schifano In curb strips detailed blown off and raked
- Roystons curb strips detailed blown off and raked common area (triangle DG area) weeds pulled out lantanas cut down trees trimmed
- New valve electrical line ran at soccer field
- Week 1 completed







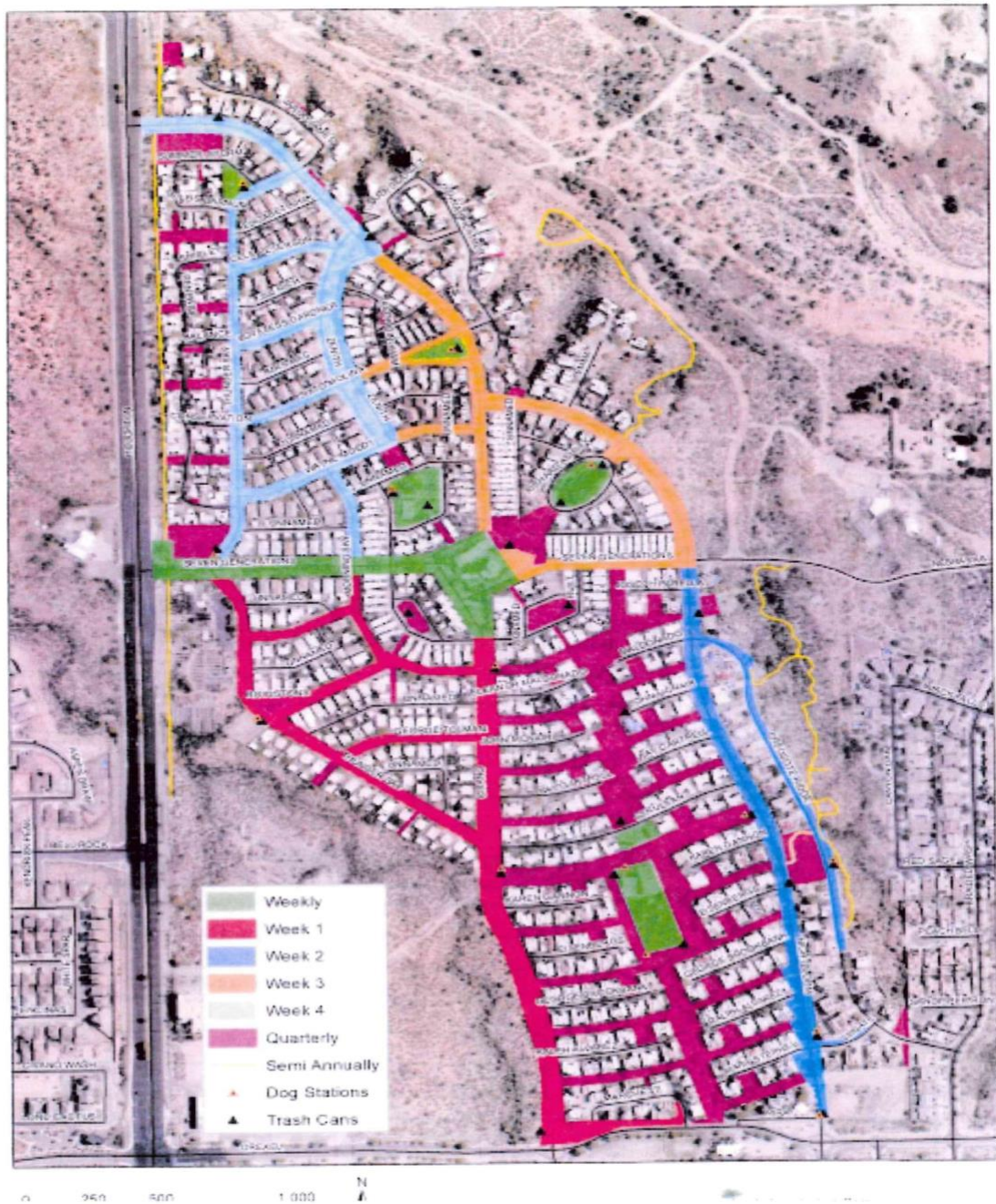
## Points of Interest

1. Monitor turf and plants for irrigation adjustments
2. Continue with cutbacks where needed
3. Replace valves and solenoids as needed
4. April 7<sup>th</sup> pest division will start pre emergent on property



## Initial Areas Map

CIVANO





# Pest Management

## Post-Emergent Areas

Herbicide	EPA #	MIX RATIO	GALLONS USED	ACTIVE INGREDIENT	DATE





## Weekly Photos





